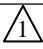



MODEL Default  
FILE Name: p:\wsp\p-e-pw\benley.com\wsp\p-e-pw\ill\Documents\Projects\US0039578\6832\_Ltr Gates\CAD\_Sheets\ID 62X93-shs-coo-1.dgn

CODE NO.	ITEM	UNIT	TOTAL QUANTITY	CONSTRUCTION CODE					
				STATE 100% MCDONOUGH ST	STATE 100% BRANDON ST				
				ROADWAY	ROADWAY				
				0005	0005				
				URBAN	URBAN				
50102400	CONCRETE REMOVAL	CU YD	0.1	0	0.1				
50300225	CONCRETE STRUCTURES	CU YD	0.2	0	0.2				
50800205	REINFORCEMENT BARS, EPOXY COATED	POUND	20	0	20				
52100510	ANCHOR BOLTS, 3/4"	EACH	24	16	8				
63000001	STEEL PLATE BEAM GUARDRAIL, TYPE A, 6 FOOT POSTS	FOOT	175	62.5	112.5				
63100045	TRAFFIC BARRIER TERMINAL, TYPE 2	EACH	3	1	2				
63100087	TRAFFIC BARRIER TERMINAL, TYPE 6A	EACH	4	0	4				
63100167	TRAFFIC BARRIER TERMINAL, TYPE 1 (SPECIAL) TANGENT	EACH	3	1	2				
63200310	GUARDRAIL REMOVAL	FOOT	437.5	50	387.5				
67100100	MOBILIZATION	L SUM	1	0.5	0.5				
70107025	CHANGEABLE MESSAGE SIGN	CAL DA	56	28	28				
78200005	GUARDRAIL REFLECTORS, TYPE A	EACH	20	4	16				
* X0326366	ELECTRICAL EQUIPMENT REMOVAL AND SALVAGE	EACH	6	4	2				
* X0327739	MISCELLANEOUS ELECTRICAL WORK	L SUM	1	0.5	0.5				

\* SPECIALTY ITEM 

 REVISED SHEET 4/10/2025



USER NAME = USAT719599	DESIGNED - AT	REVISED -
	DRAWN - AT	REVISED -
PLOT SCALE = 2.0000 ' / in.	CHECKED - KE	REVISED -
PLOT DATE = 1/24/2025	DATE - 01/24/2025	REVISED -

STATE OF ILLINOIS  
DEPARTMENT OF TRANSPORTATION

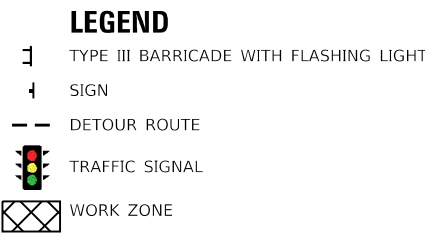
MCDONOUGH AND BRANDON STREET  
SUMMARY OF QUANTITIES

SCALE: SHEET OF SHEETS STA. TO STA.


F.A.U. RTE.	SECTION	COUNTY	TOTAL SHEETS	SHEET NO.
	(1981-082B-I) BR 24	WILL	30	3
CONTRACT NO. 62X93				
ILLINOIS FED. AID PROJECT				





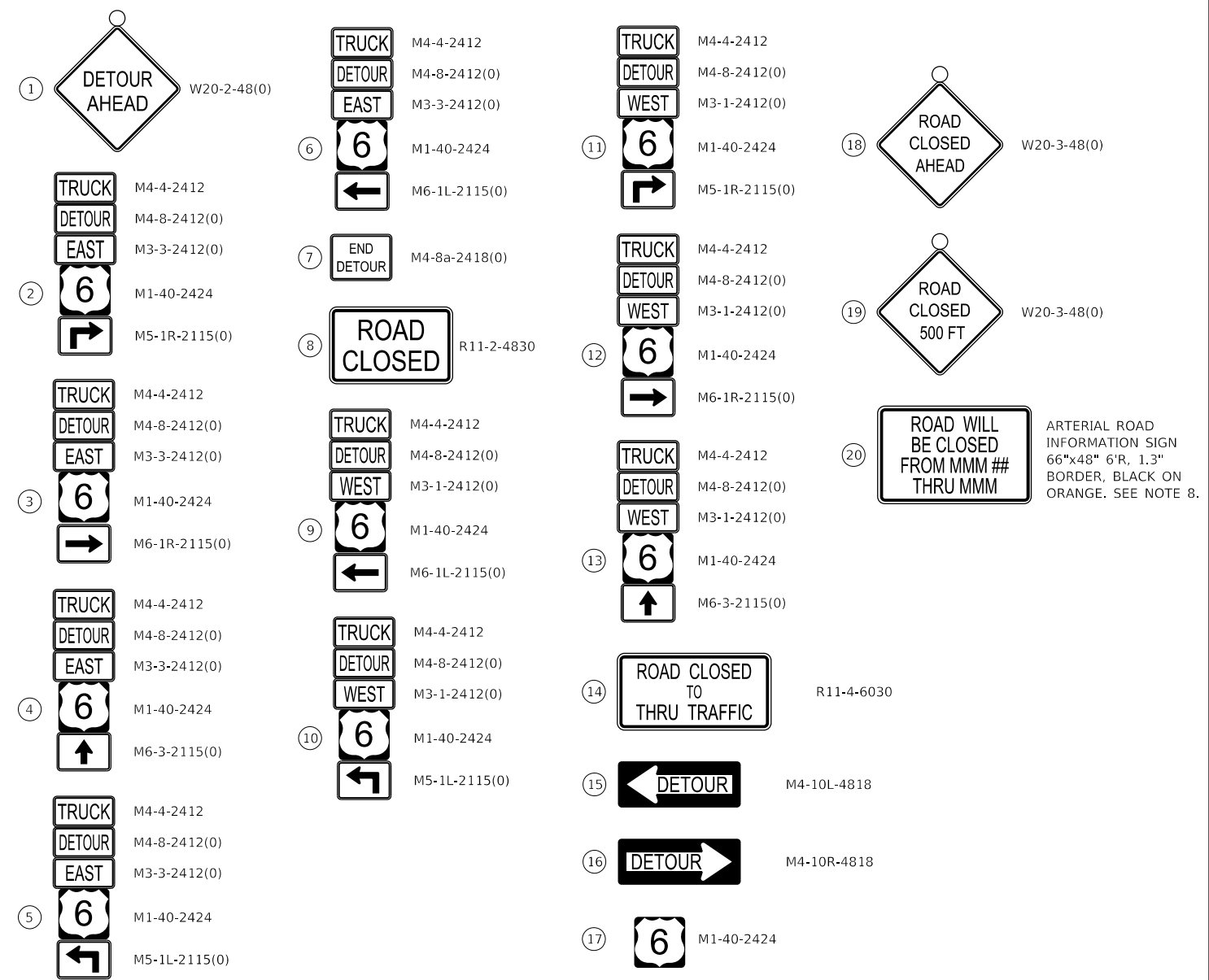


נש

REVISED	-	04/02/2025	
REVISED	-		
REVISED	-		
REVISED	-		

SCALE: NTS	SHEET 2 OF 2 SHEETS	STA. TO STA.
------------	---------------------	--------------

F.A.U. RTE.	SECTION	COUNTY	TOTAL SHEETS	SHEET NO.
313	(1981-082B-I) BR 24	WILL	30	8
		CONTRACT NO. 62X93		
ILLINOIS		FED. AID PROJECT		



1. THE CONTRACTOR SHALL CONTACT THE DISTRICT ONE TRAFFIC CONTROL SUPERVISOR A MINIMUM OF 72 HOURS PRIOR TO BEGINNING WORK.
2. THE LOCATIONS OF SIGNAGE AS SHOWN ON THE DETOUR PLAN ARE CONSIDERED APPROXIMATE. THE CONTRACTOR SHALL ADJUST SIGNAGE LOCATIONS AS NEEDED TO FIT FIELD CONDITIONS. FINAL LOCATIONS SHALL BE APPROVED BY THE ENGINEER.
3. EXISTING TRAFFIC SIGNS THAT CONFLICT WITH THE DETOUR SIGNAGE SHALL BE COVERED AS DIRECTED BY THE ENGINEER.
4. UTILIZE IDOT HIGHWAY STANDARD TC-21 FOR TYPICAL SIGN SPACING.
5. THE CONTRACTOR SHALL NOT OBSTRUCT ANY EXISTING SIGN WITH THE PLACEMENT OF DETOUR SIGNAGE.
6. A MINIMUM OF FOURTEEN (14) DAYS IN ADVANCE OF THE ROAD CLOSURE, THE CONTRACTOR SHALL PLACE ONE (1) ARTERIAL ROAD INFORMATION SIGN AT EACH END OF THE PROJECT AS DIRECTED AND AT A LOCATION DESIGNATED BY THE ENGINEER TO INFORM MOTORISTS OF THE UPCOMING CLOSURE. THE MESSAGE SHALL BE APPROVED BY THE ENGINEER. THIS WORK IS TO BE PAID FOR AT THE CONTRACT UNIT PRICE FOR CHANGEABLE MESSAGE SIGN.
7. DETOUR SIGNAGE SHALL BE CONSIDERED INCLUDED IN THE COST FOR TEMPORARY TRAFFIC CONTROL AND PROTECTION (SPECIAL) EXCEPT AS OTHERWISE NOTED.
8. ARTERIAL ROAD INFORMATION SIGN SHALL BE PAID AS TEMPORARY INFORMATION SIGNING.
9. TRAFFIC SIGNALS WITH TURNING MOVEMENTS ALONG DETOUR ROUTES SHALL BE RETIMED DUE TO DETOUR EXCEEDING THREE DAY DURATION AND SHALL BE PAID AS TEMPORARY TRAFFIC SIGNAL TIMING.
10. CONTRACT SHALL COORDINATE TRAFFIC CONTROL OPERATIONS WITH ADJACENT CONTRACTS PRIOR TO IMPLEMENTATION OF DETOUR.

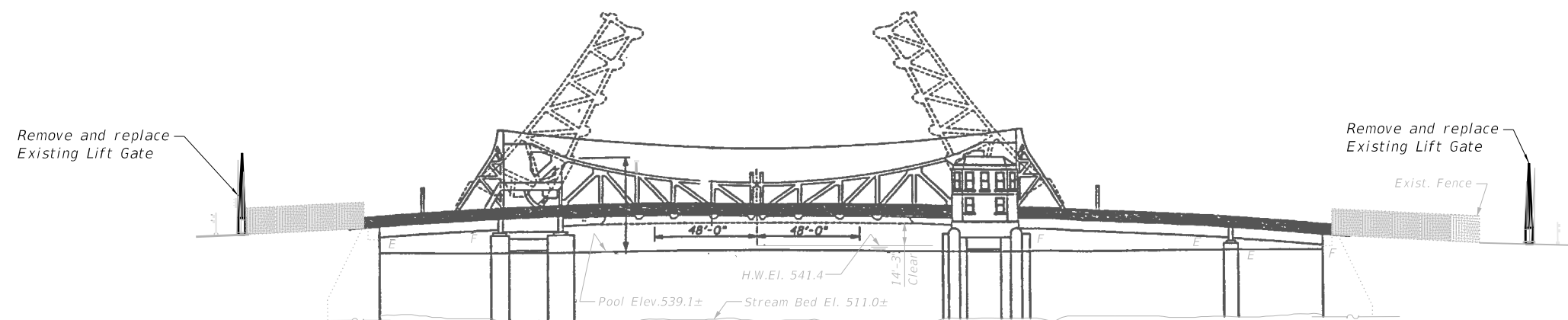
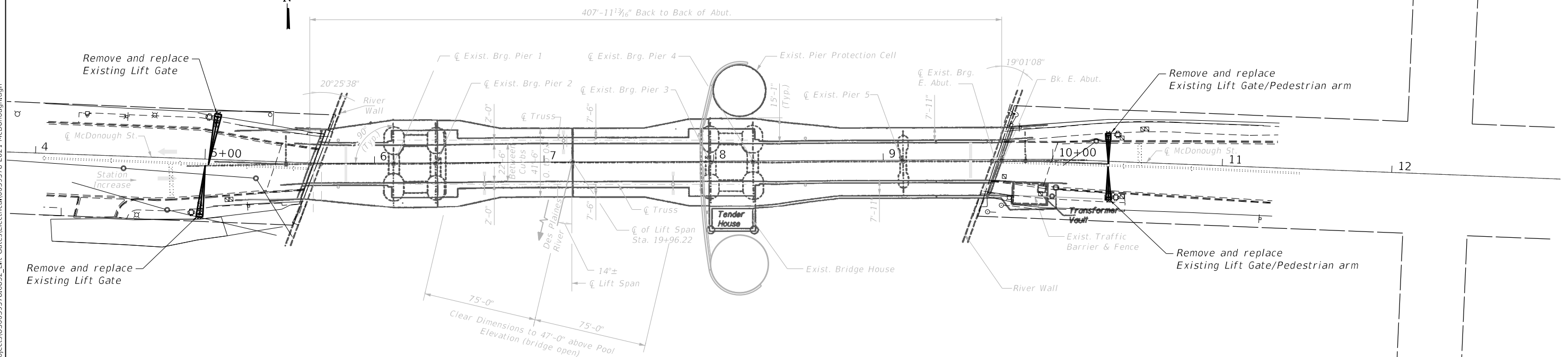


## SCOPE OF WORK

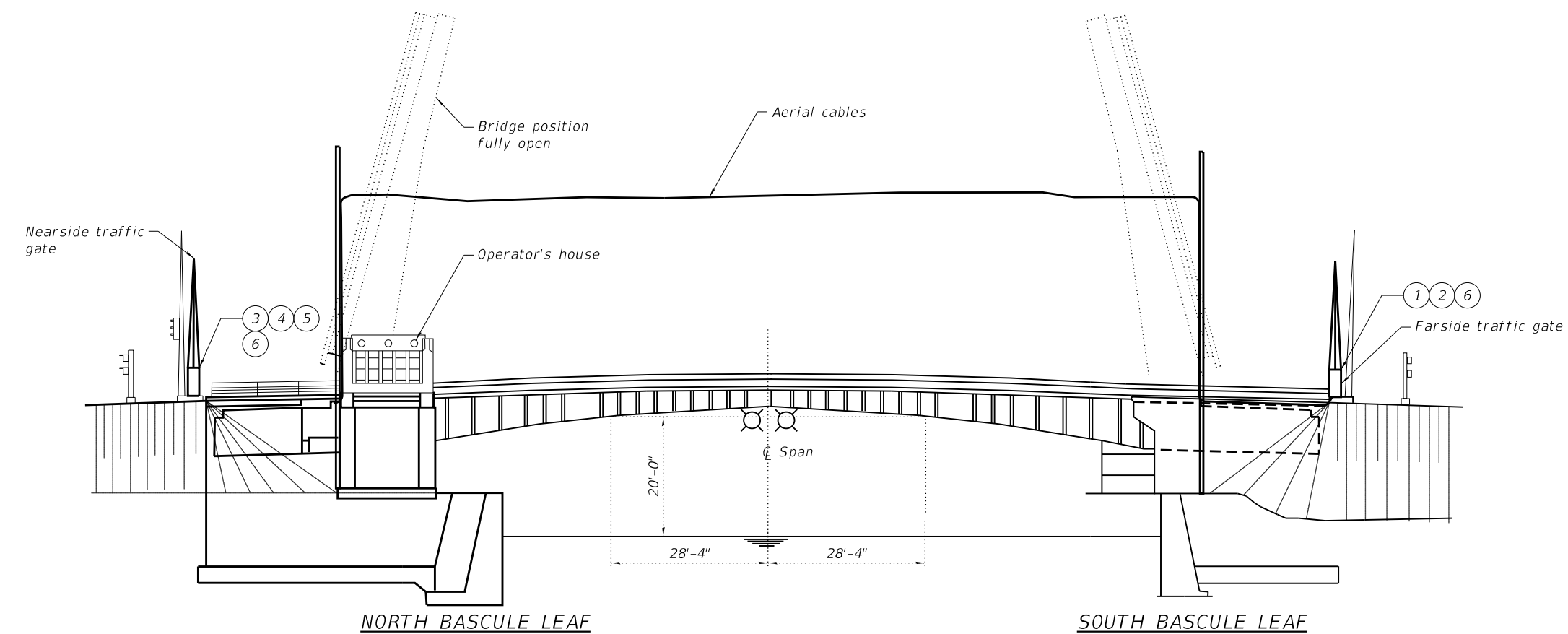
1. Terminate existing control conductors and pull back to nearest junction box.
2. Remove existing traffic gate.
3. Furnish and install new traffic gates. Near side northeast and southeast traffic gates shall have pedestrian gate arms.
4. Extend the existing control conductors to the new traffic gates. Furnish and install insulated compression splices and conductors as required to extend existing conductors to the new traffic gates.
5. Contractor shall field verify gate arm length prior to shop drawing submittal and the final installation shall comply with latest edition of MUTCD.
6. Contractor to provide a spare gate housing for each bridge in addition to the spare parts listed in the specifications.
7. Core out existing anchor bolts, then grout and install proposed anchor bolts. See structural details on sheet 27 of 29

GENERAL NOTES

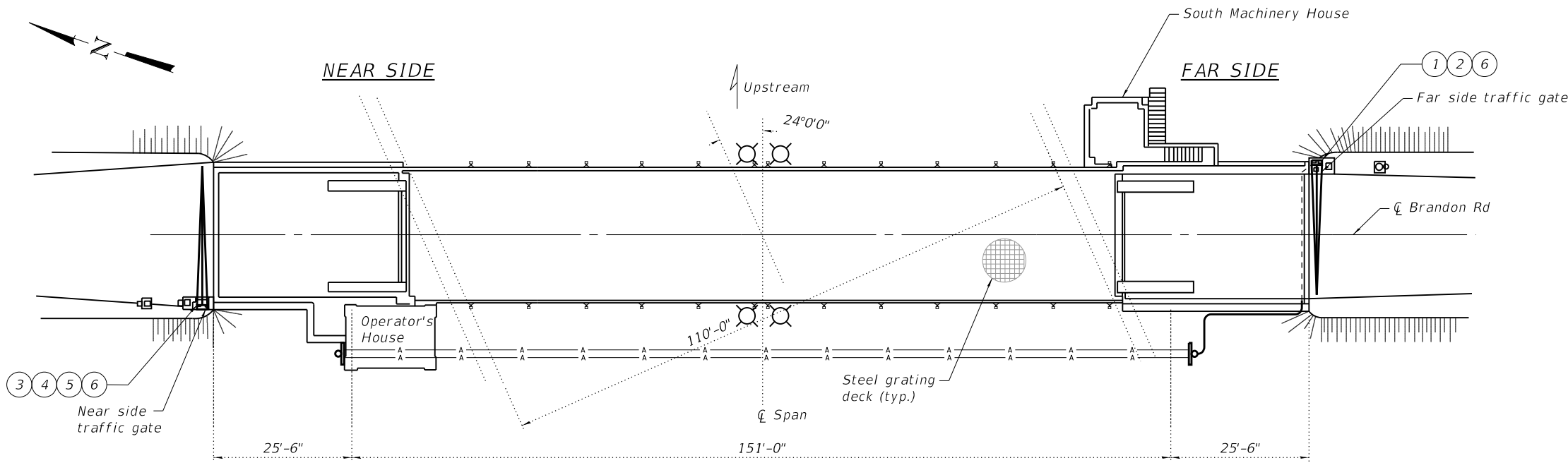
1. *All electrical work shall be performed in accordance with the requirements of the National Electric Code (NEC), American Association of State Highway and Transportation Officials (AASHTO), and Manual of Uniform Traffic Control Devices (MUTCD).*
2. *Location of electrical equipment and devices are approximate. Exact locations shall be determined upon approved shop drawings and accurate measured dimensions.*

ELEVATION

PLAN



ELEVATION



PLAN

SCOPE OF WORK

- 1 Remove existing far side traffic gate and conductors back to aerial cable connection.
- 2 Furnish and install new far side traffic gate and conductors. Reconnect conductors to aerial cable.
- 3 Remove existing near side traffic gate and conductors back to auxiliary panel connection.
- 4 Furnish and install new near side traffic gate and conductors. Reconnect conductors to auxiliary panel.
- 5 Contractor to provide a spare gate housing for each bridge in addition to the spare parts listed in the specifications.
- 6 Contractor shall field verify gate arm length prior to shop drawings submittal and the final installation shall comply with latest edition of MUTCD.
- 7 Repair gate foundation. See structural details on sheet 27 of 29.
- 8 Core out existing anchor bolts, then grout and install proposed anchor bolts. See structural details on sheet 27 of 29.

GENERAL NOTES

- 1 All electrical work shall be performed in accordance with the requirements of the National Electric Code (NEC), American Association of State Highway and Transportation Officials (AASHTO), and Manual of Uniform Traffic Control Devices (MUTCD).
- 2 Location of electrical equipment and devices are approximate. Exact locations shall be determined upon approved shop drawings and accurate measured dimensions.

MODEL: \$MODELNAME\$  
FILE NAME: \$FILEL\$

**wsp**

WSP USA Inc.  
30 N. LA SALLE STREET  
SUITE 4200  
CHICAGO, IL 60602  
TEL: (312) 782-8150  
FAX: (312) 782-1884

USER NAME =	DESIGNED - JC	REVISED - 4/10/2025 B.J.D.
	CHECKED - BLC	REVISED -
PLOT SCALE =	DRAWN - RP	REVISED -
PLOT DATE =	CHECKED - ME	REVISED -

STATE OF ILLINOIS  
DEPARTMENT OF TRANSPORTATION

ELECTRICAL PLAN AND ELEVATION  
STRUCTURE NO. 099-9903

SHEET NO. E-9 OF E-17 SHEETS

F.A.U. RTE.	SECTION	COUNTY	TOTAL SHEETS	SHEET NO.
0341	(1981-082B-I) BR 24	WILL	30	18
CONTRACT NO. 62X93				
ILLINOIS FED. AID PROJECT				