

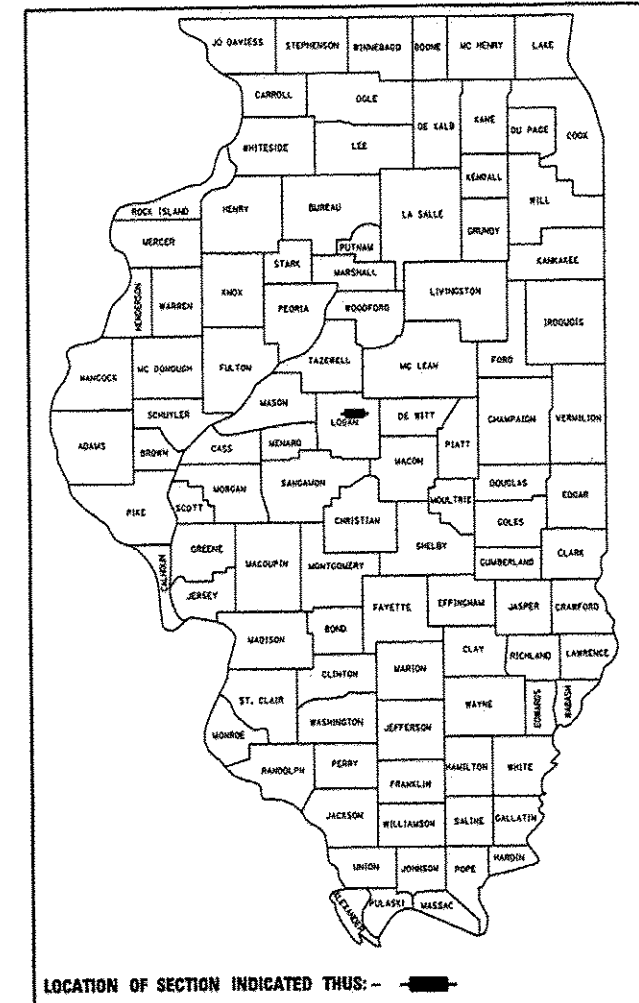
RTE.	SECTION	COUNTY	TOTAL SHEETS	SHEET NO.
CH 2	11-00311-02-RS	LOGAN	37	1
FED. ROAD DIST. NO.		ILLINOIS		

FOR INDEX OF SHEETS, SEE SHEET NO. 2
FOR LIST OF ILLINOIS DOT HIGHWAY STANDARDS, SEE SHEET NO. 2

STATE OF ILLINOIS
DEPARTMENT OF TRANSPORTATION
DIVISION OF HIGHWAYS

PLANS FOR PROPOSED FEDERAL-AID PROJECT

SURFACE TRANSPORTATION RURAL PROJECT
FAS ROUTE 559 (CH 2)
PAVEMENT MILLING & RESURFACING PROJECT (LAFO)
SECTION 11-00311-02-RS
LOGAN COUNTY
PROJECT NO. RS-0559 (103)
JOB NUMBER C-96-227-11



UTILITY CONTACTS:

UTILITY TYPE:

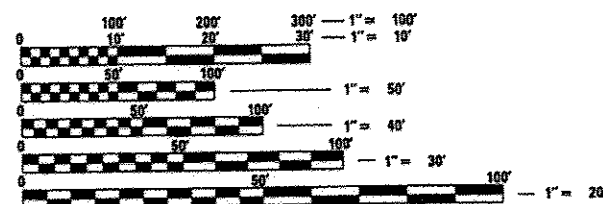
ELECTRIC
AMEREN CILCO (NORTH)
(309) 693-4839
ATTN: KENT KOWALSKA

UTILITY TYPE:

CABLE
COMCAST
(217) 383-8030
ATTN: ROB VALENTINE

UTILITY TYPE:

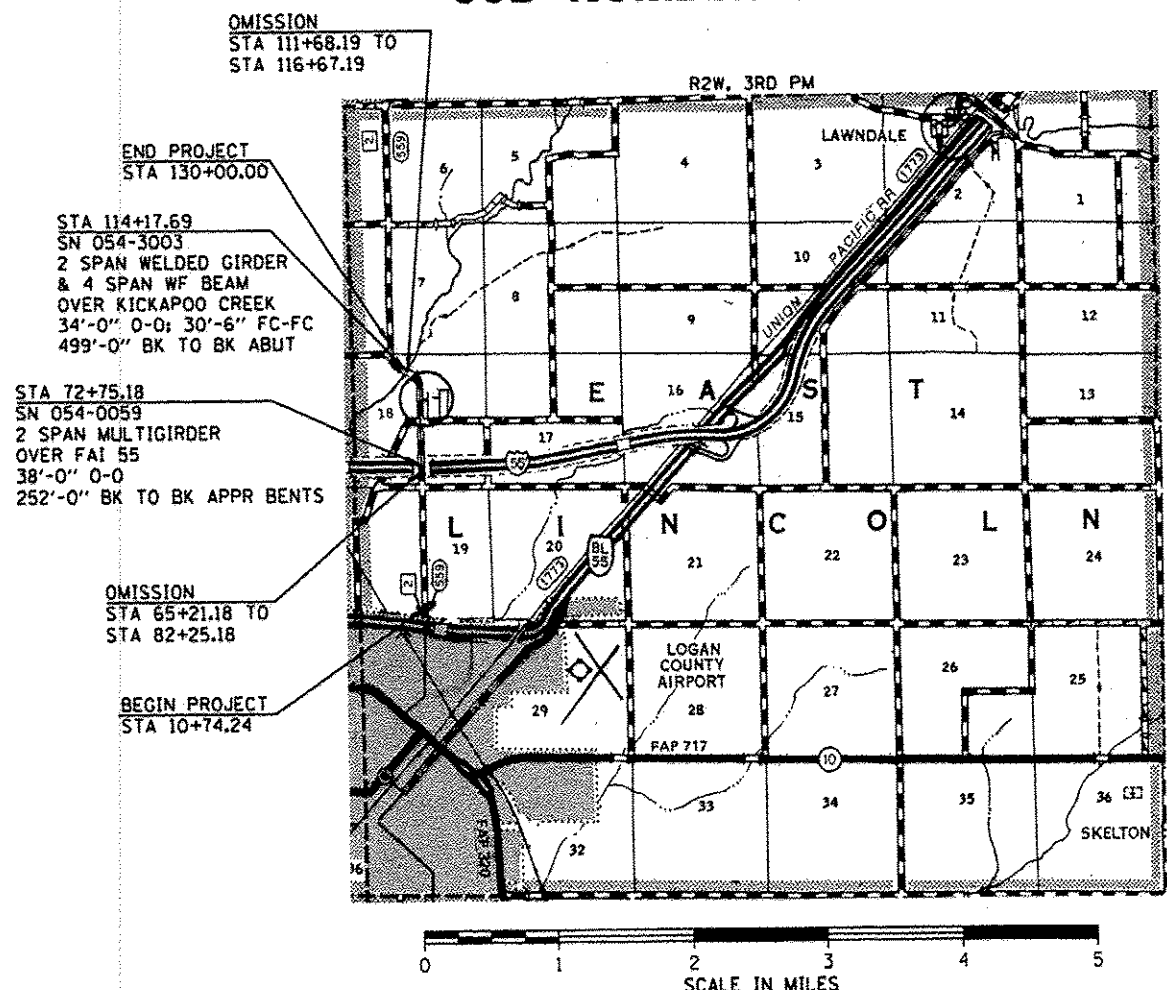
TELEPHONE
FRONTIER COMMUNICATIONS
(309) 827-1253
ATTN: DARRELL SENIOR



FULL SIZE PLANS HAVE BEEN PREPARED USING STANDARD ENGINEERING SCALES. REDUCED SIZED PLANS WILL NOT CONFORM TO STANDARD SCALES. IN MAKING MEASUREMENTS ON REDUCED PLANS, THE ABOVE SCALES MAY BE USED.

J.U.L.E.
JOINT UTILITY LOCATION INFORMATION FOR EXCAVATION
1-800-892-0123
OR 811

CONTRACT NO. 93614



GROSS LENGTH OF SECTION 11,925.76 FEET 2.259 MILES
NET LENGTH OF SECTION 9,722.76 FEET 1.841 MILES

DESIGN DESIGNATION
FUNCTIONAL CLASSIFICATION: MAJOR COLLECTOR - RURAL
CURRENT ADT: 1,500 (2011)
DESIGN SPEED: 50 MPH



Michael D. Cummins 1/23/14
ILLINOIS PROFESSIONAL NO. 43244
(Expires 11/30/15)

APPROVED	January 23, 2014
	<i>B. J. A. [Signature]</i> COUNTY ENGINEER
PASSED	February 13, 2014
	<i>Terence [Signature]</i> DISTRICT ENGINEER OF LOCAL ROADS AND STREETS
PASSED	February 13, 2014
	<i>Ron [Signature]</i> DISTRICT ENGINEER OF CONSTRUCTION
RELEASED FOR BID BASED ON LIMITED REVIEW	February 13, 2014
	<i>[Signature]</i> DEPUTY DIRECTOR OF HIGHWAYS, REGION FOUR ENGINEER

STATE OF ILLINOIS
DEPARTMENT OF TRANSPORTATION

**PRINTED BY THE AUTHORITY
OF THE STATE OF ILLINOIS**