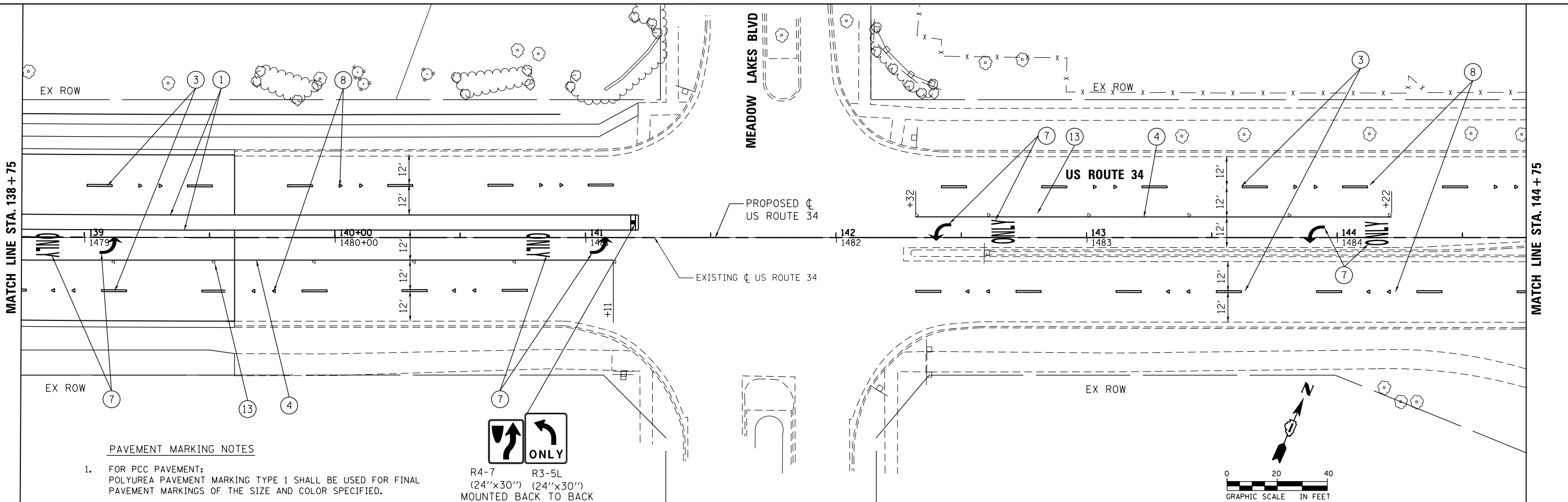


FILE NAME = Q:\100T\_25368367\_US\_34.ctb CN P:\2\Drawings\Roadway\PavementMarking\060R06-shr-fmk\_005.dgn

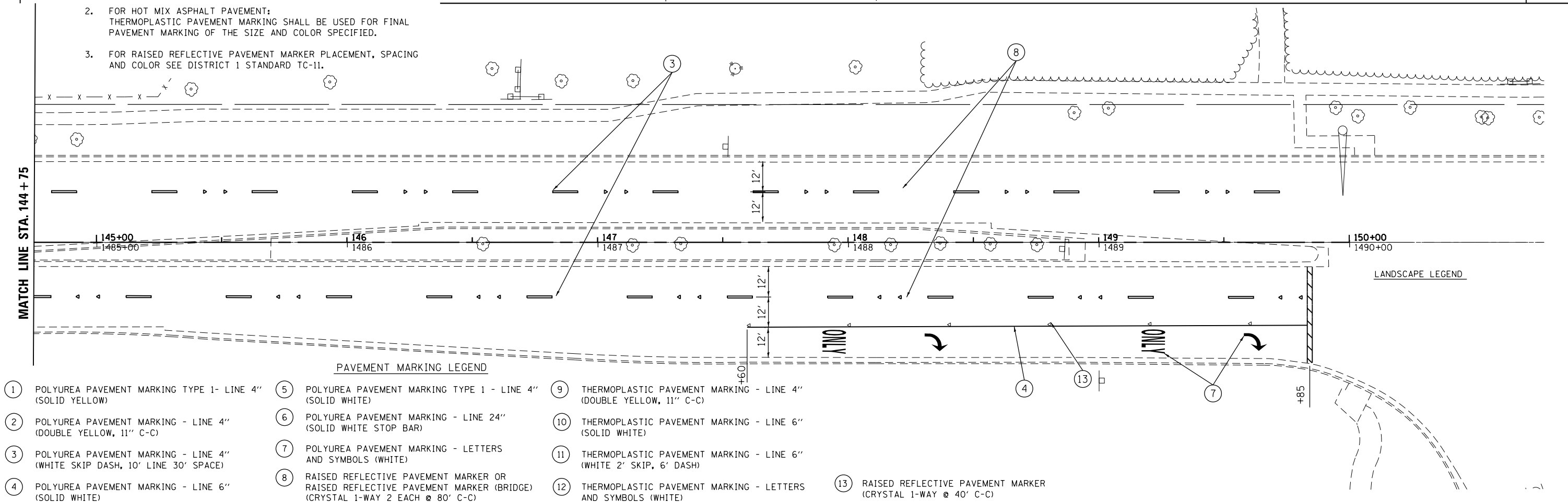
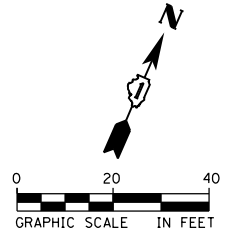


**PAVEMENT MARKING NOTES**

- FOR PCC PAVEMENT:  
POLYUREA PAVEMENT MARKING TYPE 1 SHALL BE USED FOR FINAL PAVEMENT MARKINGS OF THE SIZE AND COLOR SPECIFIED.
- FOR HOT MIX ASPHALT PAVEMENT:  
THERMOPLASTIC PAVEMENT MARKING SHALL BE USED FOR FINAL PAVEMENT MARKING OF THE SIZE AND COLOR SPECIFIED.
- FOR RAISED REFLECTIVE PAVEMENT MARKER PLACEMENT, SPACING AND COLOR SEE DISTRICT 1 STANDARD TC-11.



R4-7 R3-5L  
(24"x30") (24"x30")  
MOUNTED BACK TO BACK



**PAVEMENT MARKING LEGEND**

- |   |  |  |
|---|--|--|
| 1 POLYUREA PAVEMENT MARKING TYPE 1- LINE 4" (SOLID WHITE)                   | 5 POLYUREA PAVEMENT MARKING TYPE 1 - LINE 4" (SOLID WHITE)   | 9 THERMOPLASTIC PAVEMENT MARKING - LINE 4" (DOUBLE YELLOW, 11" C-C)  |
| 2 POLYUREA PAVEMENT MARKING - LINE 4" (DOUBLE YELLOW, 11" C-C)              | 6 POLYUREA PAVEMENT MARKING - LINE 24" (SOLID WHITE STOP BAR)  | 10 THERMOPLASTIC PAVEMENT MARKING - LINE 6" (SOLID WHITE)            |
| 3 POLYUREA PAVEMENT MARKING - LINE 4" (WHITE SKIP DASH, 10' LINE 30' SPACE) | 7 POLYUREA PAVEMENT MARKING - LETTERS AND SYMBOLS (WHITE)  | 11 THERMOPLASTIC PAVEMENT MARKING - LINE 6" (WHITE 2' SKIP, 6' DASH) |
| 4 POLYUREA PAVEMENT MARKING - LINE 6" (SOLID WHITE)                         | 8 RAISED REFLECTIVE PAVEMENT MARKER OR RAISED REFLECTIVE PAVEMENT MARKER (BRIDGE) (CRYSTAL 1-WAY 2 EACH @ 80' C-C) | 12 THERMOPLASTIC PAVEMENT MARKING - LETTERS AND SYMBOLS (WHITE)      |
|   |  | 13 RAISED REFLECTIVE PAVEMENT MARKER (CRYSTAL 1-WAY @ 40' C-C)       |



USER NAME = URS	DESIGNED - MB	REVISED -
PLOT SCALE = 40.0000' / in.	DRAWN - KJB	REVISED -
PLOT DATE = 02/28/2014	CHECKED - SPF	REVISED -
	DATE - 02/28/2014	REVISED -

**STATE OF ILLINOIS  
DEPARTMENT OF TRANSPORTATION**

**PAVEMENT MARKING PLAN  
US ROUTE 34**

SCALE: 20 SHEET NO. 6 OF 7 SHEETS STA. 138+75 TO STA. 150+00

F.A.P. RTE. 311	SECTION 652-A	COUNTY DUPAGE	TOTAL SHEETS 383	SHEET NO. 141
CONTRACT NO. 60R06				
FED. ROAD DIST. NO. 1 ILLINOIS FED. AID PROJECT				