

NOMENCLATURE

- 1 FLOWMETER TRANSMITTER/INDICATOR. MOUNT VIA STRUT-TYPE FRAMING TO 5'-0" ABOVE FINISHED GRADE.
- 2 FLOWMETER SIGNAL CABLE (SUPPLIED WITH FLOWMETER). CONTRACTOR SHALL CORE-DRILL MINIMUM 2" HOLE THROUGH TOP SLAB OR INSTALL 2" PVC SLEEVE PRIOR TO POUR OF TOP SLAB FOR ROUTING OF SIGNAL CABLE. THE TOP AND BOTTOM OF CORE DRILL OR SLEEVE SHALL BE CHAMFERED OR BELLED TO MINIMIZE ABRASION OF CABLE.
- 3 TO LIGHTING PANEL (SEE SCHEDULES FOR PANEL AND CIRCUIT NUMBERS).
- 4 MINIMUM 1" CONDUIT WITH 2/C #16 SHIELDED CABLE TO REMOTE INDICATOR.

NOTES:

- 1 THIS DRAWING IS INTENDED TO SHOW TYPICAL INSTALLATION. ADJUST FOR FIELD CONDITIONS DURING CONSTRUCTION.
- 2 FURNISH AND INSTALL ALL GROUNDING AND BONDING PER MANUFACTURER'S REQUIREMENTS.

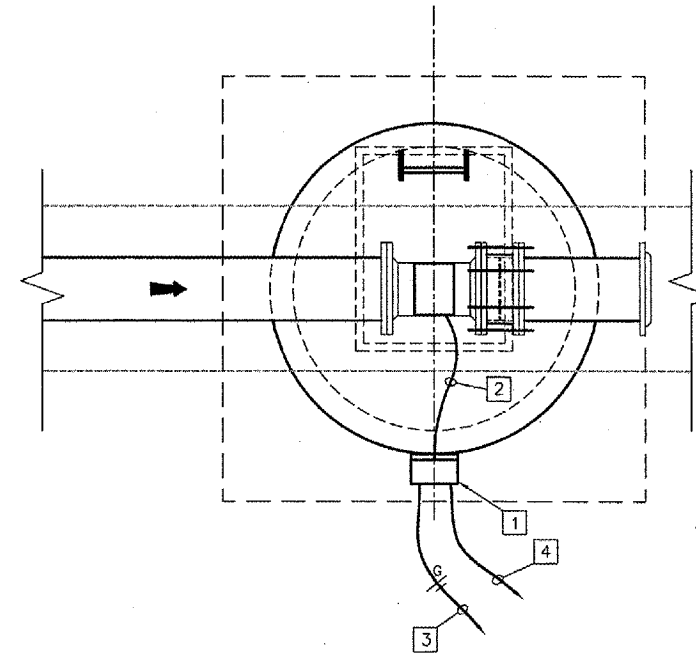
HAZARDOUS CLASSIFICATION NOTE:

THE INTERIOR OF THE METER VAULTS IS A CLASS I, DIVISION 2, GROUP D AREA. ALL ELECTRICAL EQUIPMENT AND ELECTRICAL WIRING METHODS SHALL COMPLY WITH APPLICABLE SECTIONS OF ARTICLES 500 & 501 OF THE NATIONAL ELECTRICAL CODE.

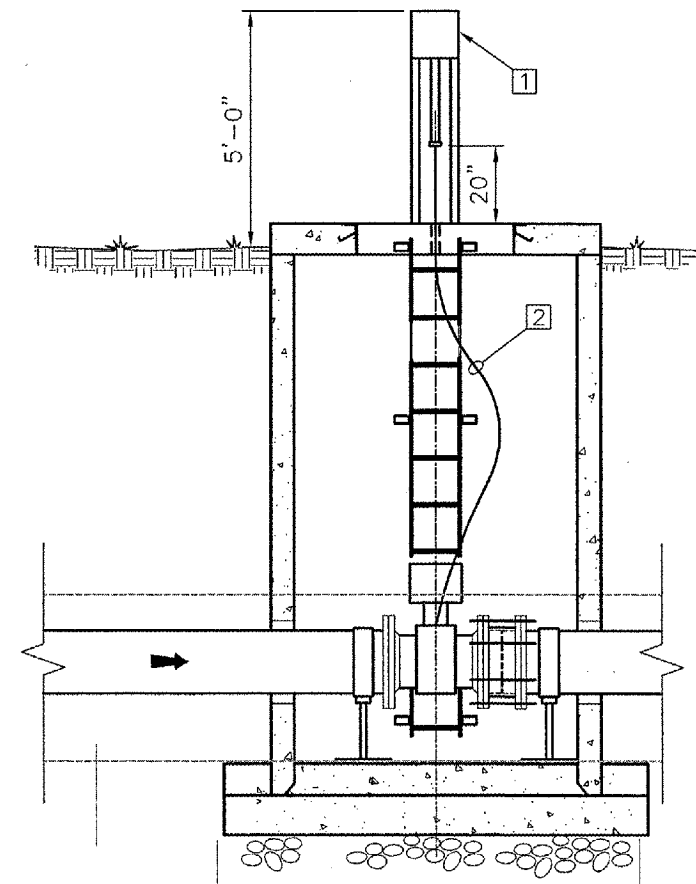
FLOWMETER SCHEDULE

LOCATION AND TAG #	APPLICATION	# UNITS REQUIRED	TYPE	THROAT SIZE
SANITARY MAGMETER	RAW SEWAGE	1	MAGMETER	6"

ALL ELECTRICAL WORK RELATED TO INSTALLATION OF MAGMETER, AND CABLING/CONDUITS BETWEEN MAGMETER AND CHEMICAL/ELECTRICAL BUILDING SHALL BE PAID UNDER LUMP SUM PAY ITEM OF CHEMICAL/ELECTRICAL BUILDING MODIFICATIONS, PAY ITEM AR800132



PLAN - ELECTRICAL
N.T.S.



ELEV - ELECTRICAL
N.T.S.

REVISIONS

NUMBER	BY	DATE

0 1 2
 THIS BAR IS EQUAL TO 2"
 AT FULL SCALE (34X22).

**CHICAGO ROCKFORD INTERNATIONAL AIRPORT
 ROCKFORD, ILLINOIS**

MAGMETER ELECTRICAL INSTALLATION

© Copyright CMT, Inc.
CMT
 CRAWFORD, MURPHY & TILLY, INC.
 CONSULTING ENGINEERS
 License No. 184-000613

Chicago Rockford International Airport

DESIGN BY:	AB
DRAWN BY:	JRO
CHECKED BY:	AB
APPROVED BY:	
DATE:	02/29/08
JOB No:	07258-06
ILLINOIS PROJECT: RFD-3787 A.I.P. PROJECT: 3-17-0088-XX	
FINAL SUBMITTAL	
SHEET	80 OF 83 SHEETS