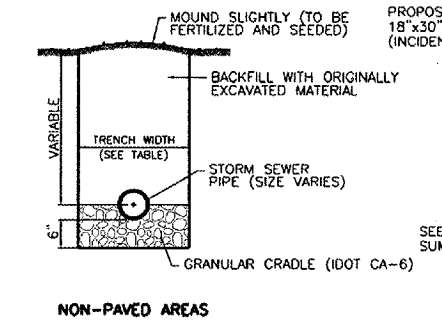
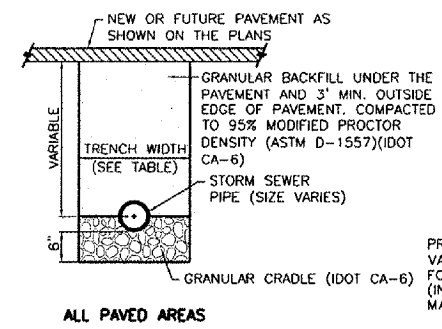
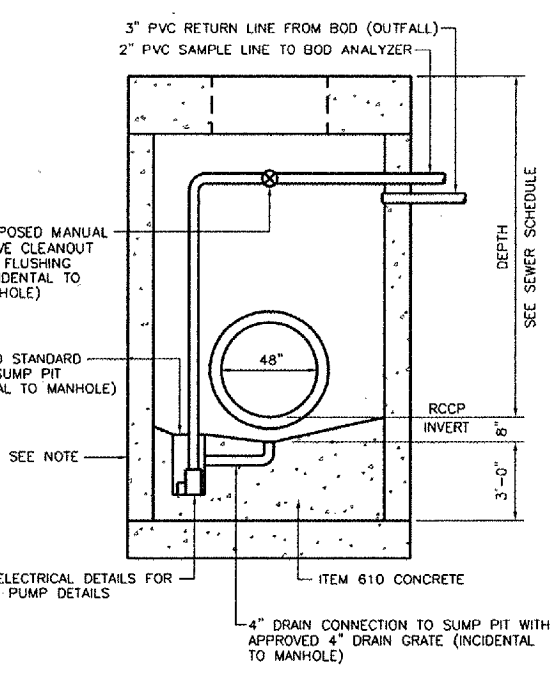


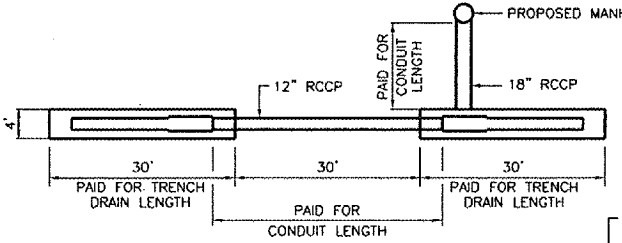
INSIDE DIAMETER OF STORM SEWER (INCHES)	MAXIMUM TRENCH WIDTH
6	3'-7"
8	3'-9"
12	4'-2"
15	4'-6"
18	4'-9"
21	5'-0"
24	5'-4"
27	5'-7"
30	5'-11"
36	6'-6"
42	7'-1"
48	7'-8"
54	8'-3"
60	8'-10"
66	9'-5"
72	10'-0"
78	10'-7"
84	11'-2"
90	11'-9"
96	12'-4"
102	12'-11"
108	13'-6"



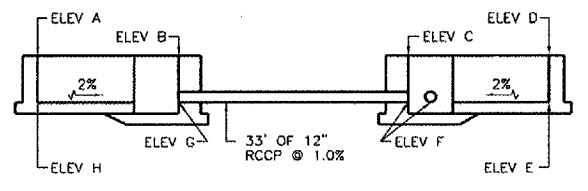
TRENCH DETAILS - STORM SEWER
N.T.S.



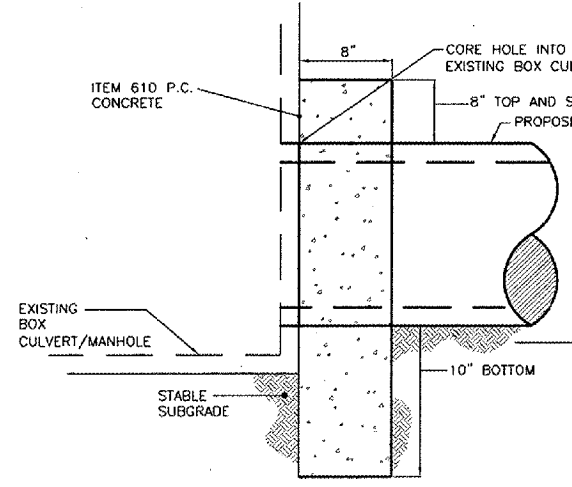
8\"/>



PLAN VIEW TRENCH DRAIN DETAIL FOR #1 - #10
NO SCALE

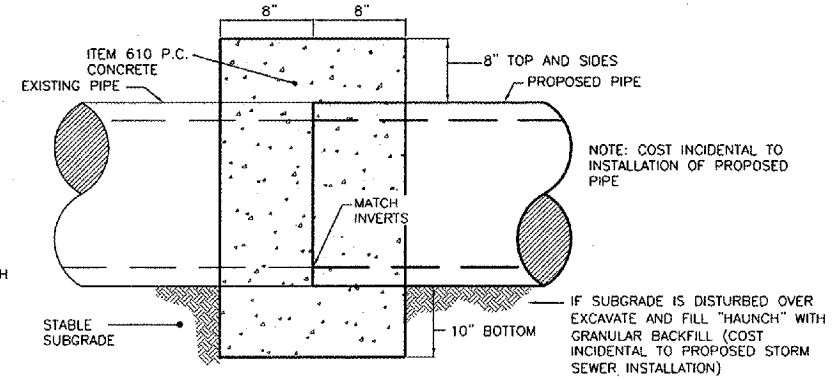


PROFILE TRENCH DRAINS #1 - #10
NO SCALE



CONCRETE COLLAR - STORM SEWER
NOT TO SCALE

NOTE: IF EXISTING STRUCTURE THAT IS BEING CORED INTO HAS A BENCH THE CONTRACTOR MUST CUT NEW FLOWLINE. (COST INCIDENTAL TO PROPOSED STORM SEWER INSTALLATION.)



CONCRETE COLLAR - STORM SEWER
NOT TO SCALE

DRAINAGE SEWER SCHEDULE

RO014

NO.	DESCRIPTION	STATION	OFFSET	RIM ELEV.	FLOW IN			FLOW OUT		
					INVERT	DIA. (INCHES)	INVERT ELEV.	INVERT	DIA. (INCHES)	INVERT ELEV.
A1	5' TYPE A MANHOLE W/ NEEHAH R-3492 (OR EQUAL) FRAME AND OPEN LID	14+20 CL TWY N	404' LT	714.47	E	18	710.50	N	24	708.90
A2	5' TYPE A MANHOLE W/ NEEHAH R-3492 (OR EQUAL) FRAME AND OPEN LID	15+40 CL TWY N	404' LT	714.47	S	24	708.61	N	30	708.51
A3	6' TYPE A MANHOLE W/ NEEHAH R-3492 (OR EQUAL) FRAME AND OPEN LID	16+60 CL TWY N	404' LT	714.47	S	30	708.23	N	36	708.13
A4	6' TYPE A MANHOLE W/ NEEHAH R-3492 (OR EQUAL) FRAME AND OPEN LID	17+80 CL TWY N	404' LT	714.47	S	36	707.84	N	36	707.74
A5	6' TYPE A MANHOLE W/ NEEHAH R-3492 (OR EQUAL) FRAME AND OPEN LID	19+00 CL TWY N	404' LT	714.47	S	36	707.46	N	42	707.36
A6	6' TYPE A MANHOLE W/ NEEHAH R-3492 (OR EQUAL) FRAME AND OPEN LID	20+20 CL TWY N	404' LT	713.57	S	42	707.07	N	42	706.97
A7	6' TYPE A MANHOLE W/ NEEHAH R-3492 (OR EQUAL) FRAME AND OPEN LID	21+40 CL TWY N	404' LT	712.87	S	42	706.69	N	42	706.59
A8	7' TYPE A MANHOLE W/ NEEHAH R-3492 (OR EQUAL) FRAME AND OPEN LID	22+60 CL TWY N	404' LT	714.69	S	42	706.30	N	48	706.20
A9	7' TYPE A MANHOLE W/ NEEHAH R-3492 (OR EQUAL) FRAME AND OPEN LID	23+80 CL TWY N	404' LT	714.55	S	48	705.92	N	48	705.82
A10	7' TYPE A MANHOLE W/ NEEHAH R-3492 (OR EQUAL) FRAME AND OPEN LID	25+00 CL TWY N	404' LT	714.57	S	48	705.54	N	48	705.44
A11	8' TYPE A MANHOLE W/ NEEHAH R-3492 (OR EQUAL) FRAME AND OPEN LID	25+75 CL TWY N	404' LT	714.71	S	48	705.20	E	48	697.15
A12	8' TYPE A MANHOLE W/ NEEHAH R-3492 (OR EQUAL) FRAME AND OPEN LID	25+75 CL TWY N	200' LT	710.10	W	48	696.45	E	48	696.35
A13	8' TYPE A MANHOLE W/ NEEHAH R-3492 (OR EQUAL) FRAME AND OPEN LID	25+75 CL TWY N	10' RT	710.42	W	48	696.86	N	48	695.66
A14	8' TYPE A FLAT SLAB TOP SAMPLING MANHOLE WITH SUMP (SEE SUMP MANHOLE DETAILS) W/ NEEHAH R-3492 (OR EQUAL) FRAME AND OPEN LID	27+87 CL TWY N	95' RT	701.20	S	48	694.78	NW	48	694.68
DS	12'x13' CAST IN PLACE DIVERSION STRUCTURE W/ GRATING (SEE DIVERSION STRUCTURE DETAILS)	28+69 CL TWY N	37' RT	TOC 704.20	S	48	694.35	NW	48	693.85
A15	REMOVE EXISTING 8' MANHOLE AND REPLACE WITH 8' TYPE A MANHOLE W/ TYPE 1 FRAME AND OPEN LID (NEENAH R-2504 OR EQUAL)	29+05 CL TWY N	12' RT	699.50	SE	48	693.50	EXIST NW	30	684.50
B1A	TYPE B INLET W/ TYPE 1 FRAME AND OPEN LID (NEENAH R-2504 OR EQUAL)	12+25 CL TWY N	372.4' RT	713.00	N	12	708.90	W	18	708.80
B1B	TYPE B INLET W/ TYPE 1 FRAME AND OPEN LID (NEENAH R-2504 OR EQUAL)	12+88 CL TWY N	372.4' RT	713.37				S	12	709.50
B1	2 - 45 DEGREE 72\"/>									
B2A	TYPE B INLET W/ TYPE 1 FRAME AND OPEN LID (NEENAH R-2504 OR EQUAL)	12+95 CL TWY N	390' LT	712.10				S	12	705.32
B2	7'x12' CAST-IN-PLACE BOX MANHOLE W/ TYPE I FRAME AND OPEN LID (NEENAH R-2504 OR EQUAL) (SEE MANHOLE DETAILS - SHEET 1)	12+25 CL TWY N	390' LT	712.00	E	72	699.59	W	72	697.88
B3	12'x12' CAST-IN-PLACE BOX MANHOLE W/ TYPE I FRAME AND OPEN LID (NEENAH R-2504 OR EQUAL) (SEE MANHOLE DETAILS - SHEET 2)	12+25 CL TWY N	635' LT	712.00	E	72	697.53	W	72	697.43
B4	7'x12' CAST-IN-PLACE BOX MANHOLE W/ TYPE I FRAME AND OPEN LID (NEENAH R-2504 OR EQUAL) (SEE MANHOLE DETAILS - SHEET 3)	14+20 CL TWY N	700' LT	709.10	SE	72	697.14	N	72	697.04
B5	7'x12' CAST-IN-PLACE BOX MANHOLE W/ TYPE I FRAME AND OPEN LID (NEENAH R-2504 OR EQUAL) (SEE MANHOLE DETAILS - SHEET 4)	15+87 CL TWY N	700' LT	709.10	S	72	696.80	N	72	696.70
B6	7'x15.5' CAST-IN-PLACE BOX MANHOLE W/ TYPE I FRAME AND OPEN LID (NEENAH R-2504 OR EQUAL) (SEE MANHOLE DETAILS - SHEET 5)	17+47 CL TWY N	700' LT	709.10	S	72	696.48	NW	72	696.38
B7	72\"/>									

NOTE: STATION AND OFFSET IS TO CENTER OF STRUCTURE (AT REFERENCE POINT #1 FOR BOX MANHOLES - SEE MANHOLE DETAIL SHEETS)

TRENCH DRAIN SCHEDULE

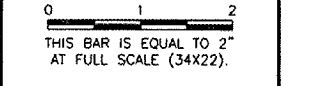
TRENCH DRAIN NO.	STATION	OFFSET	ELEV. A	ELEV. B	ELEV. C	ELEV. D	ELEV. E	ELEV. F	ELEV. G	ELEV. H
TD1	13+90 CL TWY N	388' LT.	714.34	714.34	714.34	714.34	-	-	710.94	711.41
TD2	14+50 CL TWY N	388' LT.	714.34	714.34	714.34	714.34	711.08	710.61	-	-
TD3	15+10 CL TWY N	388' LT.	714.34	714.34	714.34	714.34	-	-	710.94	711.41
TD4	15+70 CL TWY N	388' LT.	714.34	714.34	714.34	714.34	711.08	710.61	-	-
TD5	16+30 CL TWY N	388' LT.	714.34	714.34	714.34	714.34	-	-	710.94	711.41
TD6	16+90 CL TWY N	388' LT.	714.34	714.34	714.34	714.34	711.08	710.61	-	-
TD7	17+50 CL TWY N	388' LT.	714.34	714.34	714.34	714.34	-	-	710.94	711.41
TD8	18+10 CL TWY N	388' LT.	714.34	714.34	714.34	714.34	711.08	710.61	-	-
TD9	18+70 CL TWY N	388' LT.	714.34	714.34	714.34	714.34	-	-	710.94	711.41
TD10	19+30 CL TWY N	388' LT.	714.34	714.34	714.34	714.34	711.08	710.61	-	-
TD11	19+90 CL TWY N	388' LT.	714.34	714.34	714.34	714.34	-	-	710.94	711.41
TD12	20+50 CL TWY N	388' LT.	714.34	714.34	714.34	714.34	711.08	710.61	-	-
TD13	21+10 CL TWY N	388' LT.	714.34	714.34	714.34	714.34	-	-	710.94	711.41
TD14	21+70 CL TWY N	388' LT.	714.34	714.34	714.34	714.34	711.08	710.61	-	-
TD15	22+30 CL TWY N	388' LT.	714.34	714.34	714.34	714.34	-	-	710.94	711.41
TD16	22+90 CL TWY N	388' LT.	714.34	714.34	714.34	714.34	711.08	710.61	-	-
TD17	23+50 CL TWY N	388' LT.	714.34	714.34	714.34	714.34	-	-	710.94	711.41
TD18	24+10 CL TWY N	388' LT.	714.34	714.34	714.34	714.34	711.08	710.61	-	-
TD19	24+70 CL TWY N	388' LT.	714.34	714.34	714.34	714.34	-	-	710.94	711.41
TD20	25+30 CL TWY N	388' LT.	714.34	714.34	714.34	714.34	711.08	710.61	-	-

NOTE: STATION AND OFFSET IS TO NORTH EDGE OF TRENCH DRAIN ON TRENCH DRAIN CENTERLINE

K:\Rockford\0725806 NW Air Cargo Dev\Draw\Sheet
FILE: Nw-drainsched.dwg
LAYOUT: Layout1
UPDATE BY: Jeremy Linke
SURVEY BOOK #
DATE: Thursday, April 03, 2008 11:28:13 AM
XREF DWG: tbcint.dwg

REVISIONS

NUMBER	BY	DATE



CHICAGO ROCKFORD INTERNATIONAL AIRPORT
ROCKFORD, ILLINOIS
DRAINAGE SCHEDULE AND DETAILS

© Copyright CMT, Inc.

CMT
CHICAGO, MURPHY & TULLY, INC.
CONSULTING ENGINEERS
License No. BR-00695

Chicago Rockford International Airport

DESIGN BY: JRL
DRAWN BY: JRO
CHECKED BY: CAL
APPROVED BY:
DATE: 02/29/08
JOB No: 07258-06
ILLINOIS PROJECT: RFD-3787
A.I.P. PROJECT: 3-17-0088-XX
FINAL SUBMITTAL
SHEET 26 OF 83 SHEETS