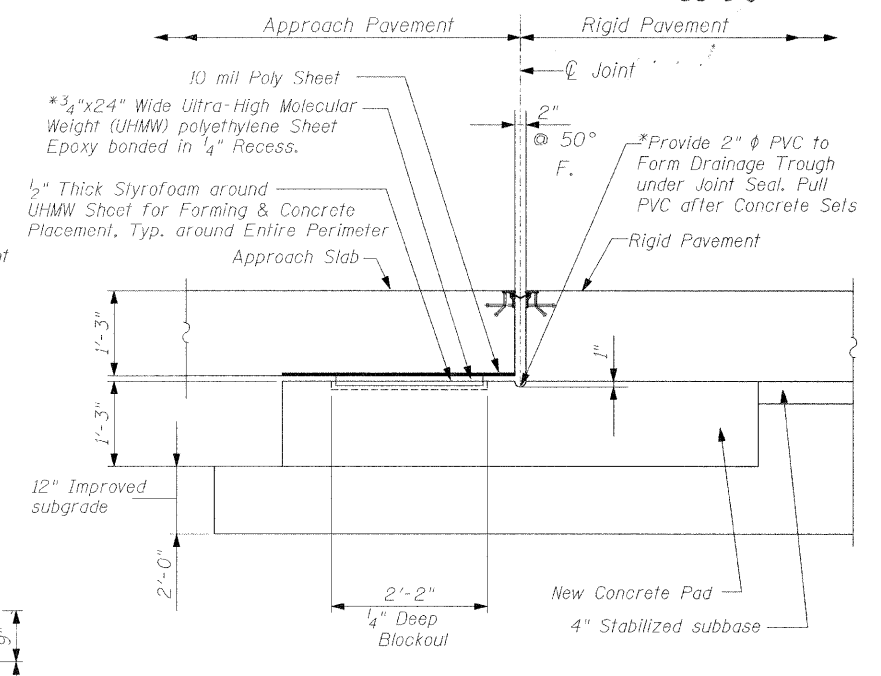
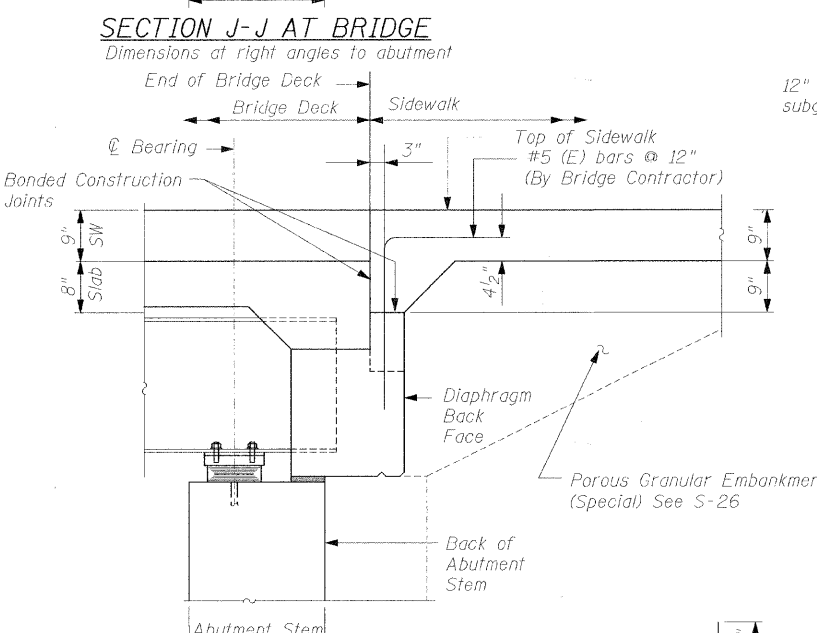
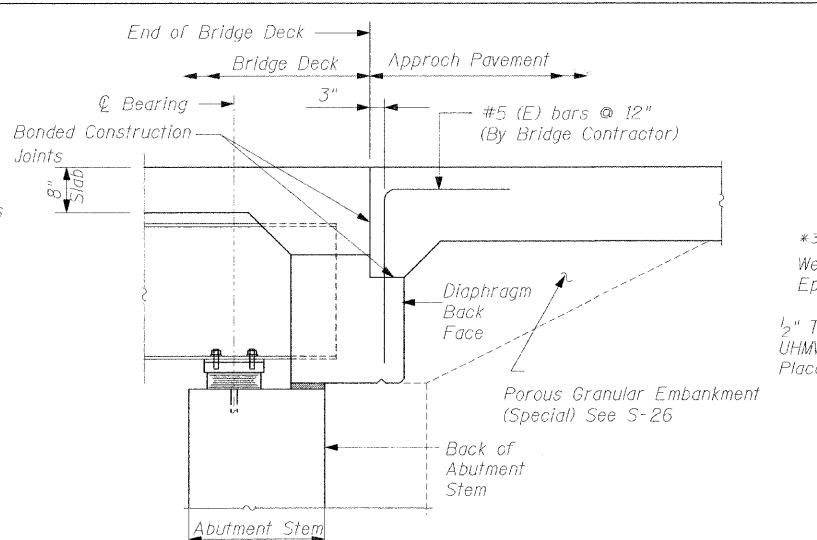
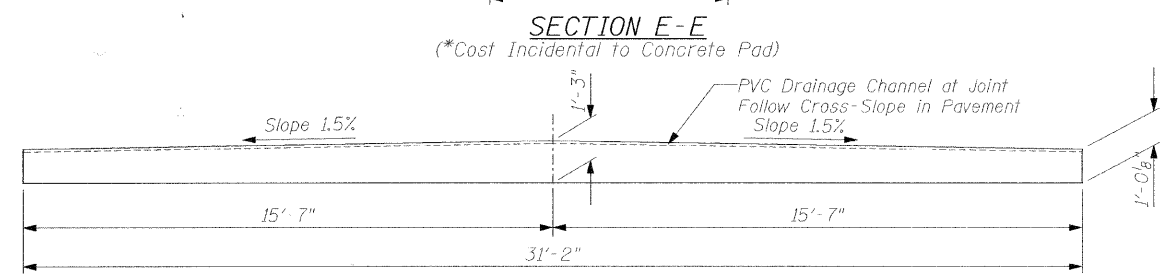
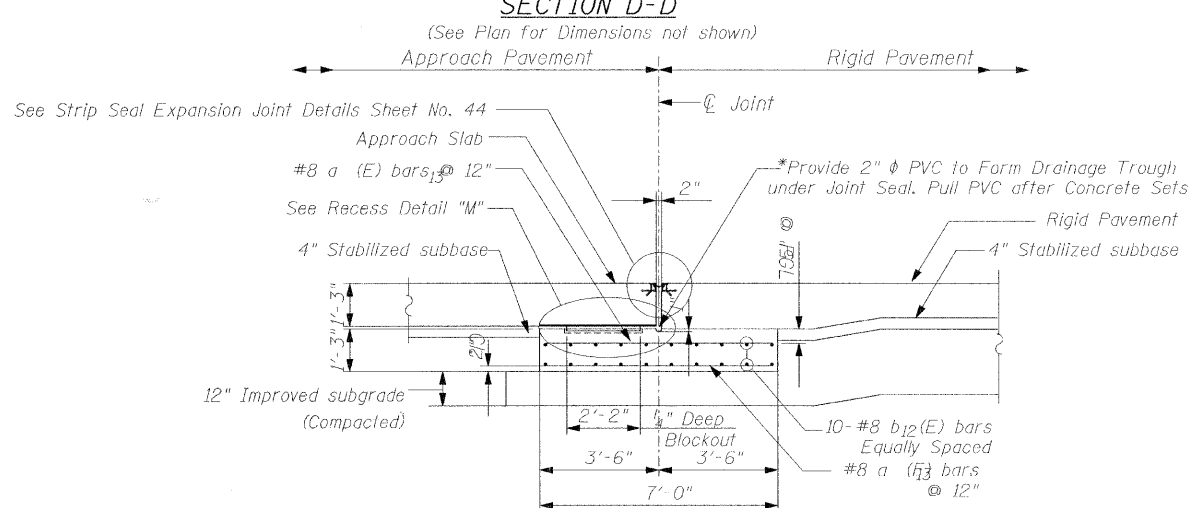
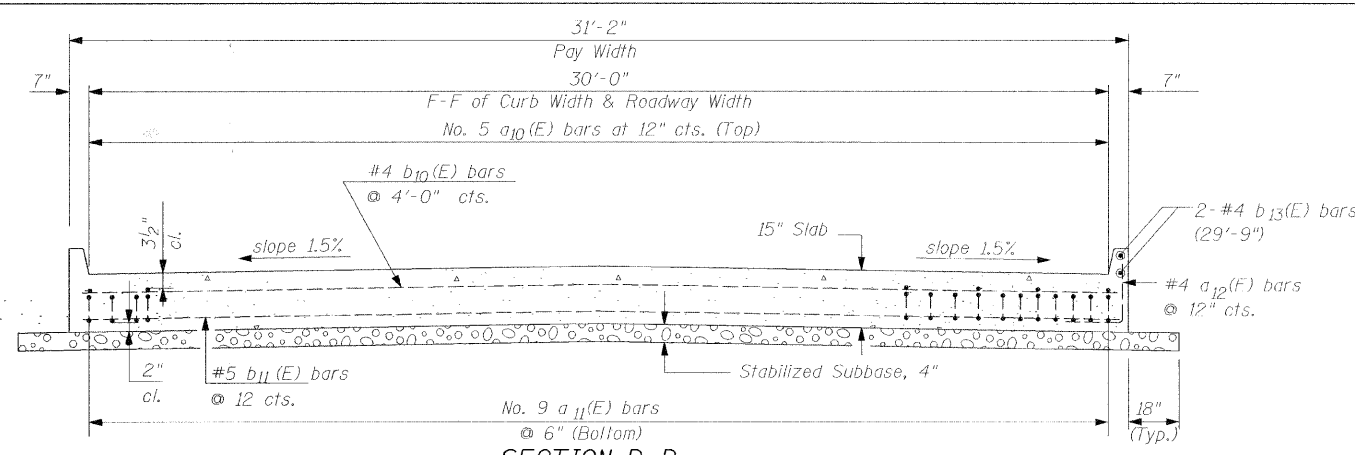


F.A.U. R.T.E.	SECTION	COUNTY	TOTAL SHEETS	SHEET NO.
1248	99-00080-00-BR	LAKE	46	43
STA. 185+96		TO STA. 189+70		
FED. ROAD DIST. NO.		ILLINOIS FED. AID PROJECT		

63020

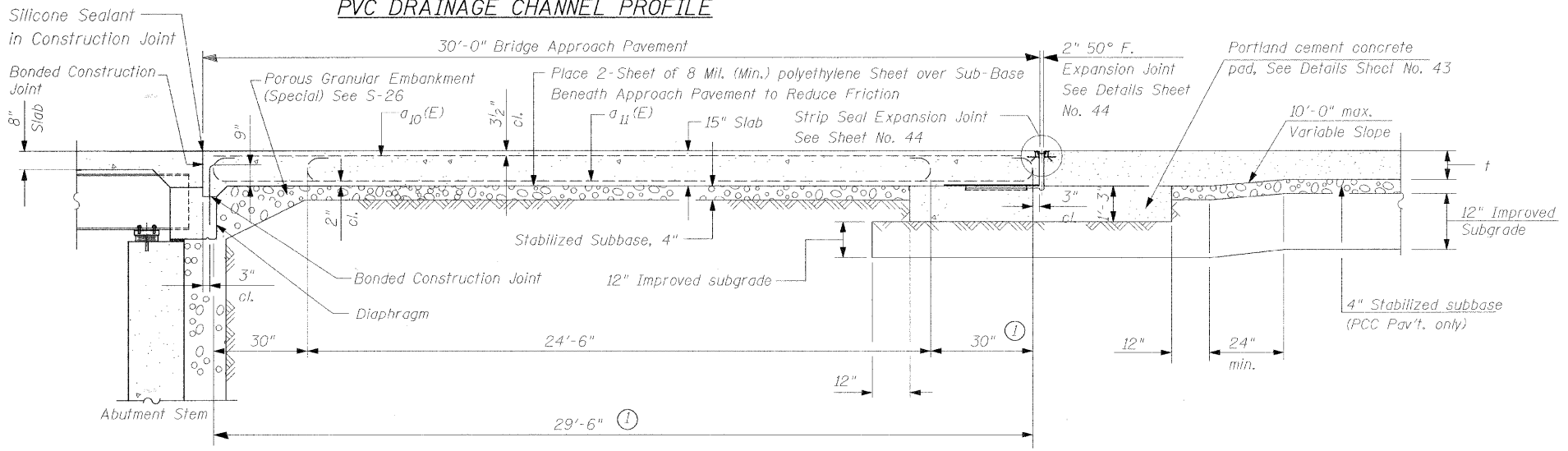


BILL OF MATERIAL

Item	Unit	Total
Bridge Approach Pavement (Special)	Sq. Yd.	245
Portland Cement Pad (Special)	Sq. Yd.	55

DESIGN STRESSES
 $f_y = 60,000 \text{ p.s.i.}$
 $f'_c = 4,000 \text{ p.s.i.}$
 $n = 8.1$

DATE: 2/6/2008 FILENAME: P:\2006\2301-2400\2006.2324-NAnderson-Old Elm Design\MICROSTATION-FINAL\C-43.dgn



① Stagger No. 9 bars as shown on plan - full width

*Porous Granular Embankment (Special) Placement behind Diaphragm is Important to the Proper Performance of the Semi-Integral Abutment. Review with Engineer Prior to Placement.

WJE **Wiss, Janney, Elstner Associates, Inc.**
 Engineers, Architects, Material Scientists
 330 Pfingsten Road, Northbrook, IL 60062
 (847) 272-7400, Fax: (847) 291-4813
 WJE No. 2006.2324

THE CITY OF LAKE FOREST
 CHARTERED 1861

ILLINOIS DEPARTMENT OF TRANSPORTATION
 BUREAU OF LOCAL ROADS AND STREETS

PROJECT: **OLD ELM ROAD OVER EAST SKOKIE DITCH**

TITLE: **BRIDGE APPROACH PAVEMENT (SPECIAL) SECTIONS & DETAILS**

SCALE: N.T.S. DRAWN BY: IMG

DATE: JANUARY 2008 CHECKED BY: NSA

REV. NO.	DATE	REVISION RECORD	MADE BY	CHECKED BY