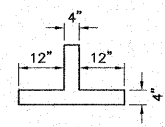
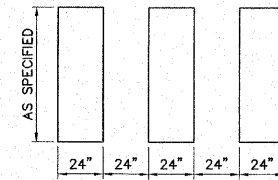


TYPICAL YIELD LINE DETAIL
SCALE: 1" = 2'



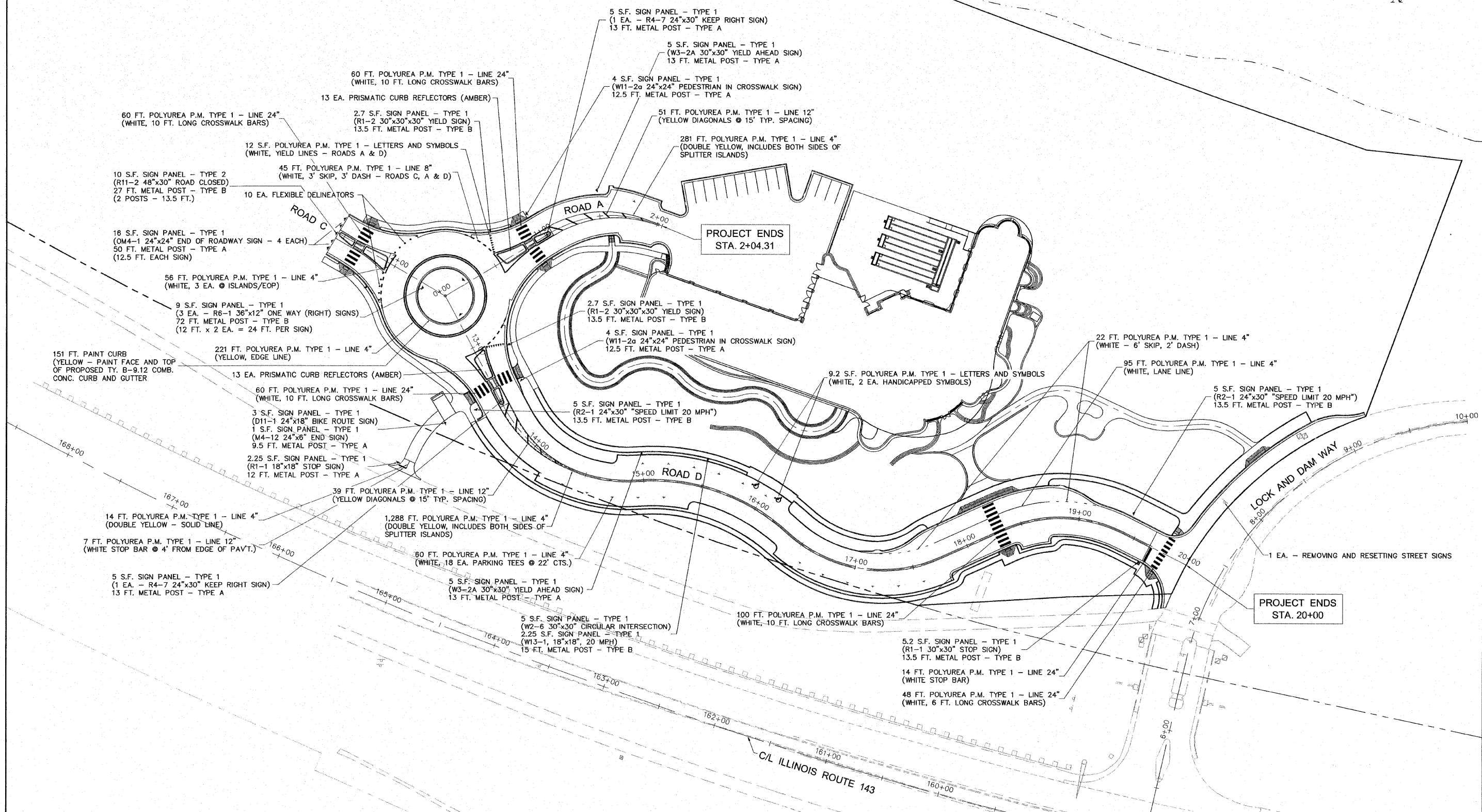
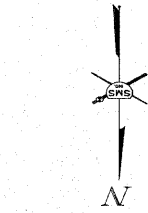
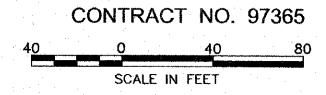
TYPICAL PARKING TEE DETAIL
SCALE: 1" = 2'



TYPICAL CROSSWALK BARS DETAIL
SCALE: 1" = 4'

NOTES

1. POLYUREA PAVEMENT MARKING TYPE 1 IS ABBREVIATED AS POLYUREA P.M. TYPE 1



NO.	REVISIONS

SMS ENGINEERS
Sheppard, Morgan & Schwaab, Inc.
 CONSULTING ENGINEERS AND LAND SURVEYORS
 215 Marine Street, P.O. Box E, Alton, IL 62002, 618462-9795 E-mail: mail@smsengineers.com
 10 Central Industrial Drive, Granite City, IL 62040, 618677-9700 E-mail: mail@smsengineers.com
 DESIGN FIRM # 184-000992

LEWIS & CLARK COMMUNITY COLLEGE
 SECTION 05-00001-00-PK
 ACCESS ROADS FOR THE
 NATIONAL GREAT RIVERS RESEARCH AND EDUCATION CENTER
 PAVEMENT MARKING & SIGNING PLAN

DWG. NO.	LP\A\AIC\405829
PHASE I PWMT MARK.DWG	
REF. BK.	PG. -
JOB NO.	457111.1
DSN. BY:	DEC
DWNL. BY:	CAO
CHK. BY:	DEC
DATE:	SEPT. 8, 2008
SCALE:	AS SHOWN
SHEET	22 OF 36

S:\Land Projects\A\AIC\405829\Drawings\Phase I\Print\Marking\Phase I PWMT Marking.dwg, 2/22/08 8:21:27 AM, jman, 1:40