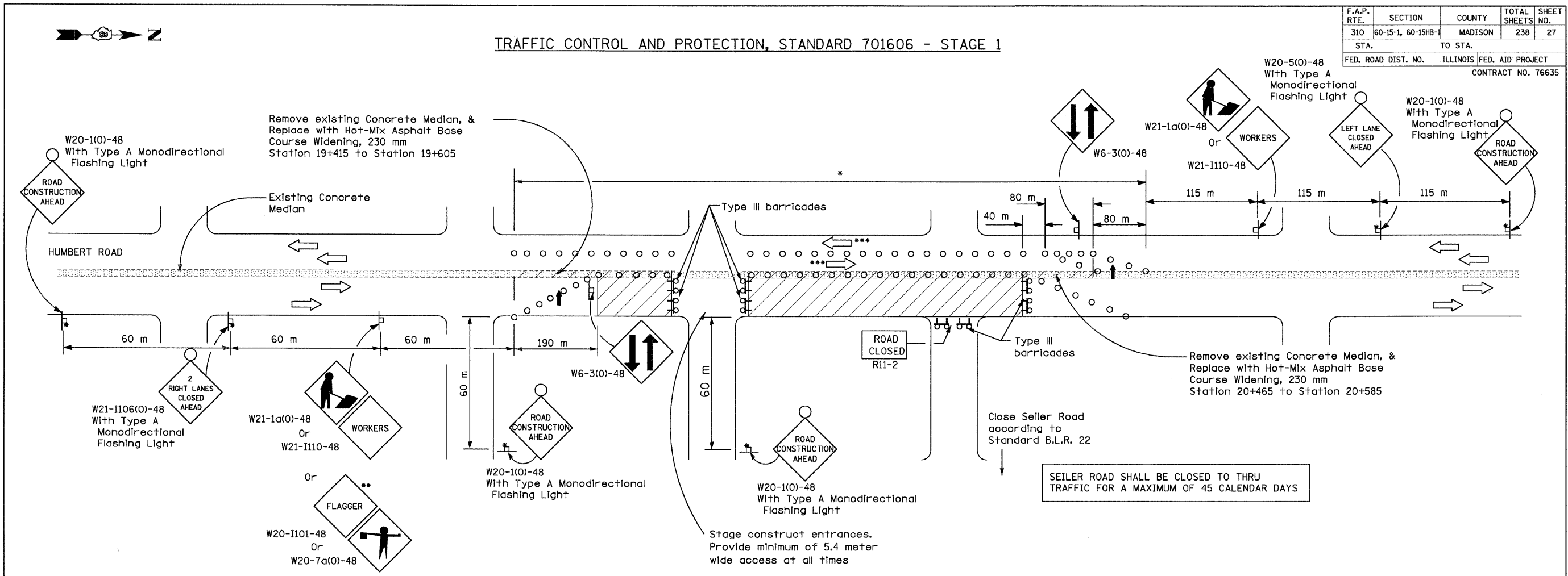


F.A.P. RTE.	SECTION	COUNTY	TOTAL SHEETS	SHEET NO.
310	60-15-1, 60-15HB-1	MADISON	238	27
STA.	TO STA.			
FED. ROAD DIST. NO.	ILLINOIS FED. AID PROJECT		CONTRACT NO. 76635	

TRAFFIC CONTROL AND PROTECTION, STANDARD 701606 - STAGE 1



**STAGE CONSTRUCTION SEQUENCE**

THE FOLLOWING STAGE CONSTRUCTION SEQUENCE IS FOR INFORMATION ONLY. THE CONTRACTOR IS RESPONSIBLE FOR PLANNING AND EXECUTING THIS PROJECT WHICH SHALL BE SUBJECT TO THE APPROVAL OF THE ENGINEER.

**STAGE CONSTRUCTION OF HUMBERT ROAD (CH 4)**

**STAGE 1**

REMOVE CONCRETE MEDIAN AND REPLACE WITH HOT-MIX ASPHALT BASE COURSE WIDENING FROM STATION 19+415 TO 19+605 AND STATION 20+465 TO 20+585. UTILIZE TRAFFIC CONTROL AND PROTECTION STANDARD 701602.

SET UP TRAFFIC CONTROL AND PROTECTION ACCORDING TO TRAFFIC CONTROL AND PROTECTION 701606.

CONSTRUCT PCC PAVEMENT, DRAINAGE STRUCTURES, CONCRETE CURB AND GUTTER, HOT-MIX ASPHALT SHOULDERS, CONCRETE MEDIAN AND OTHER MISCELLANEOUS ITEMS ON EAST SIDE OF HUMBERT ROAD.

CLOSE SEILER ROAD TO THRU TRAFFIC ACCORDING TO B.L.R. STANDARD 22. CONSTRUCT SEILER ROAD WHILE PROVIDING LOCAL ACCESS.

**STAGE 2**

OPEN NORTHBOUND LANES TO NORTHBOUND TRAFFIC.

SET UP TRAFFIC CONTROL AND PROTECTION ACCORDING TO STANDARD 701606, CLOSING THE WEST SOUTH BOUND TRAFFIC LANE.

CONSTRUCT PCC PAVEMENT, DRAINAGE STRUCTURES, CONCRETE CURB AND GUTTER, HOT-MIX ASPHALT SHOULDERS AND OTHER MISCELLANEOUS ITEMS ON WEST SIDE OF HUMBERT ROAD.

REMOVE HOT-MIX ASPHALT BASE COURSE WIDENING AND REPLACE WITH CORRUGATED PC CONCRETE MEDIAN FROM STATION 19+415 TO 19+605 AND STATION 20+465 TO 20+585. UTILIZE TRAFFIC CONTROL AND PROTECTION STANDARD 701602.

CONSTRUCTION OF BRIDGE STRUCTURES AND EMBANKMENT CONES SHALL CORRESPOND WITH THE STAGE CONSTRUCTION OF HUMBERT ROAD AS CLOSELY AS POSSIBLE. THE CONTRACTOR SHALL COORDINATE CONSTRUCTION OF THE STRUCTURES AND ROADWAY TO MINIMIZE CONSTRUCTION DELAY AND IMPACT ON TRAFFIC.

**SYMBOLS**

- Work area
- Drum or barricade
- Sign on portable or permanent support
- Sign with type A monodirectional flashing light
- Arrow board
- Barricade or drum with flashing light
- Type III barricade with flashing lights
- Flagger with traffic control sign.

**GENERAL NOTES**

- \* Drums at 8 m (25') centers for first and last 75 m (250'). Intermediate cones may be placed at 15 m (50') centers. When drums or Type I or Type II barricades are used, the interval between devices may be doubled.
- \*\* Use flagger sign only when flagger is present. Flaggers shall be required according to Article 701.04.
- Warning signs shall be fluorescent orange.
- \*\*\* Traffic lane widths shall be a minimum of 3.2 m.

DRAWING NOT TO SCALE

REVISIONS	
NAME	DATE

ILLINOIS DEPARTMENT OF TRANSPORTATION  
 TRAFFIC CONTROL & PROTECTION  
 FAP 310 (IL 255)  
 SECTIONS 60-15-1, 60-15HB-1  
 MADISON COUNTY  
 DRAWN BY  
 CHECKED BY  
 DATE

p:\02f\iles\00024\dhumber-t\detail\smisc\traff.c015b1.dgn