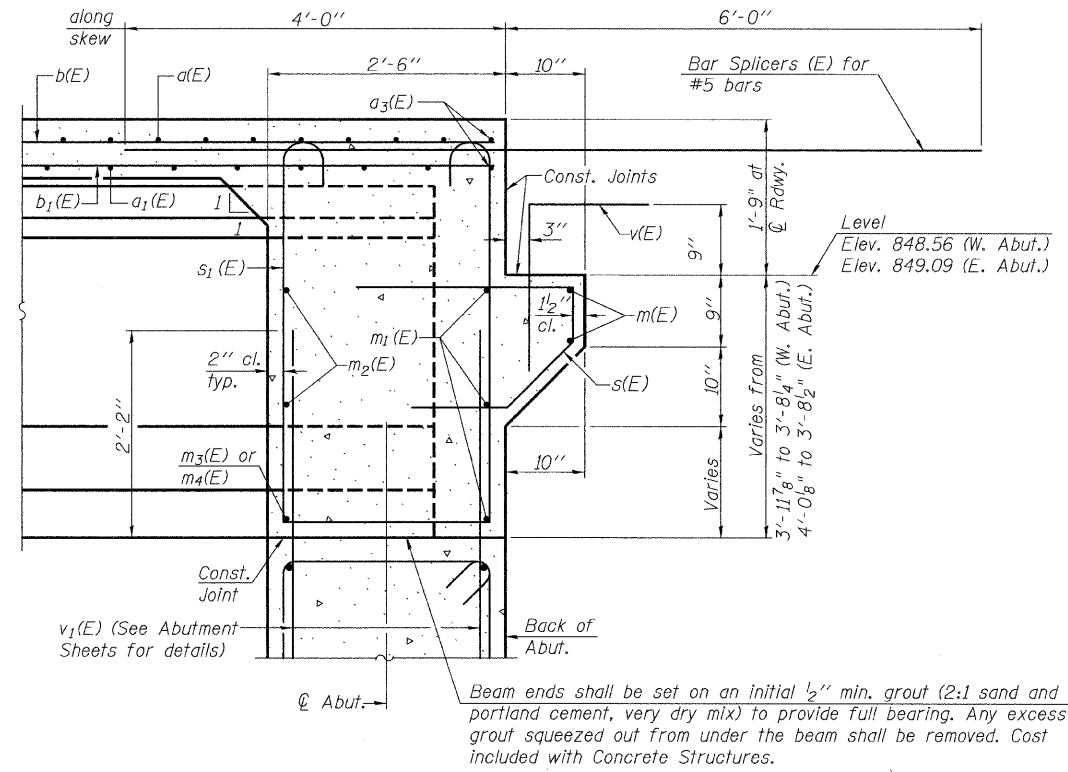


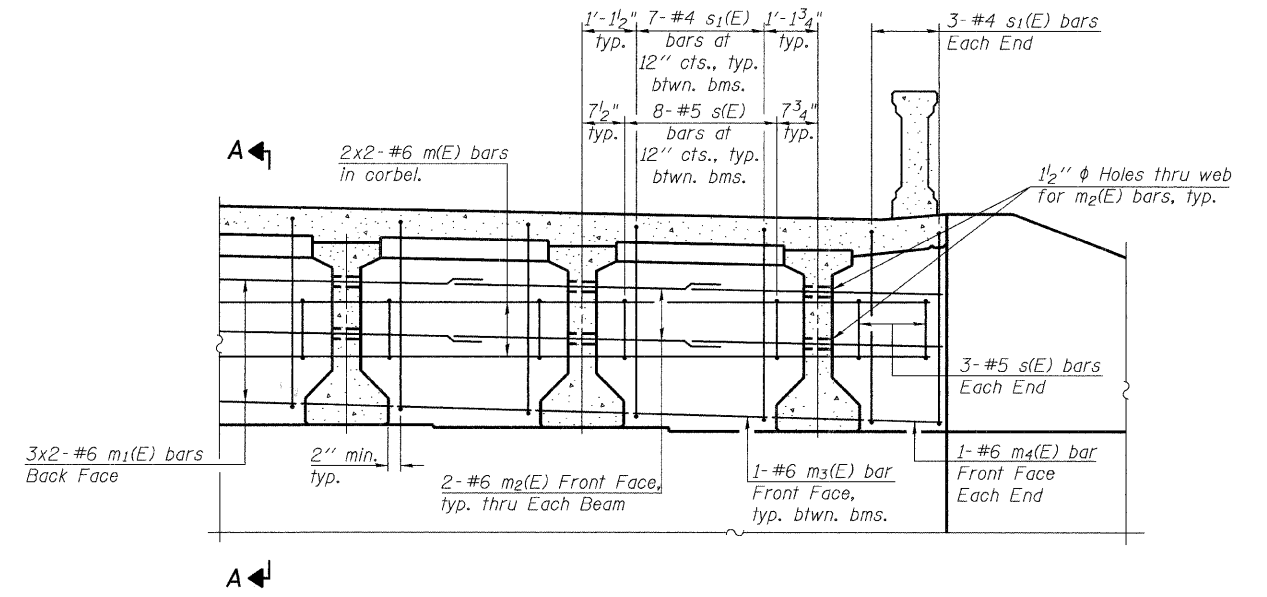
McHENRY COUNTY  
DIVISION OF TRANSPORTATION



**SECTION A-A**

Dimensions at right angles to abutment, except as shown.

- Notes:
- Reinforcement bars in diaphragm are billed with superstructure on Sheet S-10.
  - Concrete in diaphragm is included with Concrete Superstructure on Sheet S-10.
  - For details of bars s(E), s<sub>1</sub>(E) and s<sub>2</sub>(E) see Sheet S-10.
  - The s(E), s<sub>1</sub>(E) and s<sub>2</sub>(E) bars shall be placed parallel to the beams.
  - Spacing for these bars shall be at right angles to the beams.



**DIAPHRAGM ELEVATION AT ABUTMENT**

**MINIMUM BAR LAP**  
#6 Bars = 3'-7"

**INTEGRAL ABUTMENT  
DIAPHRAGM DETAILS  
STRUCTURE NO. 056-3173**

SHEET NO. S-8 OF S-20 SHEETS	F.A. RTE.	SECTION	COUNTY	TOTAL SHEETS	SHEET NO.
		05-00310-00-BR	McHENRY	44	24
FED. ROAD DIST. NO.			ILLINOIS FED. AID PROJECT		
			CONTRACT NO. 63114		

DESIGNED	AMK
CHECKED	EKM
DRAWN	RD
CHECKED	EKM



**Ciorba Group, Inc.**  
CONSULTING ENGINEERS  
5507 North Cumberland Avenue, Suite 402 Chicago, Illinois 60656  
Tel. 773.775.4009 Fax 773.775.4014 Email chicago@ciorba.com

1.0000000 // IN.

rdanley

2/6/2009

N:\PROJ\3335\Design\Structural\CAD\3335 08 Integral Abutment diaphragm Details.dgn