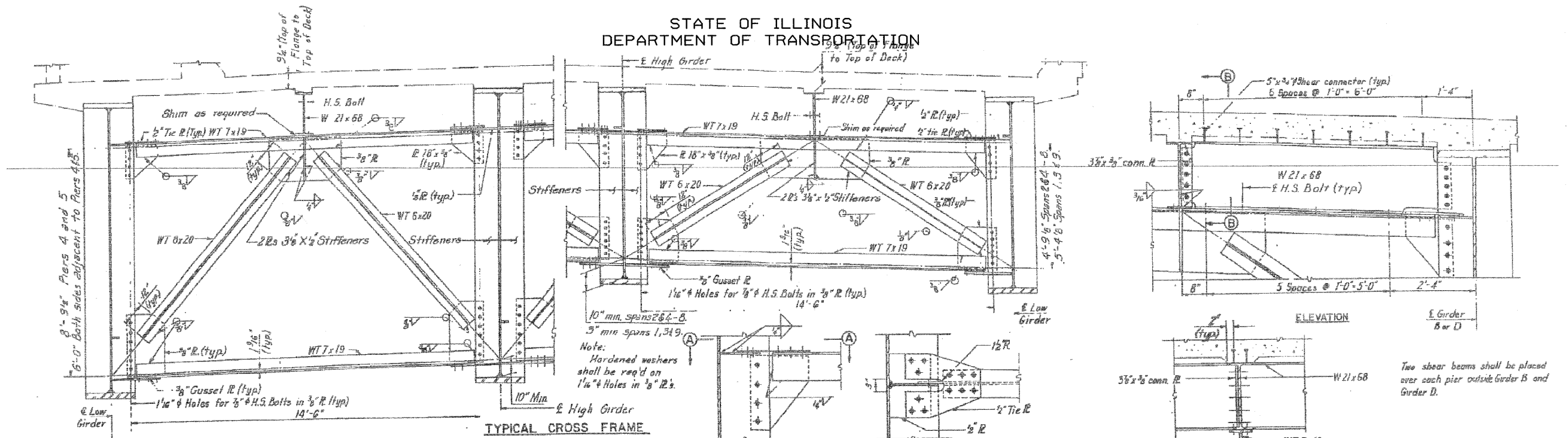
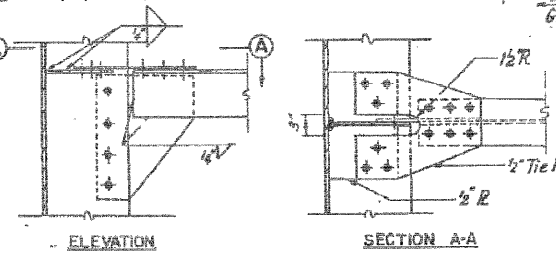


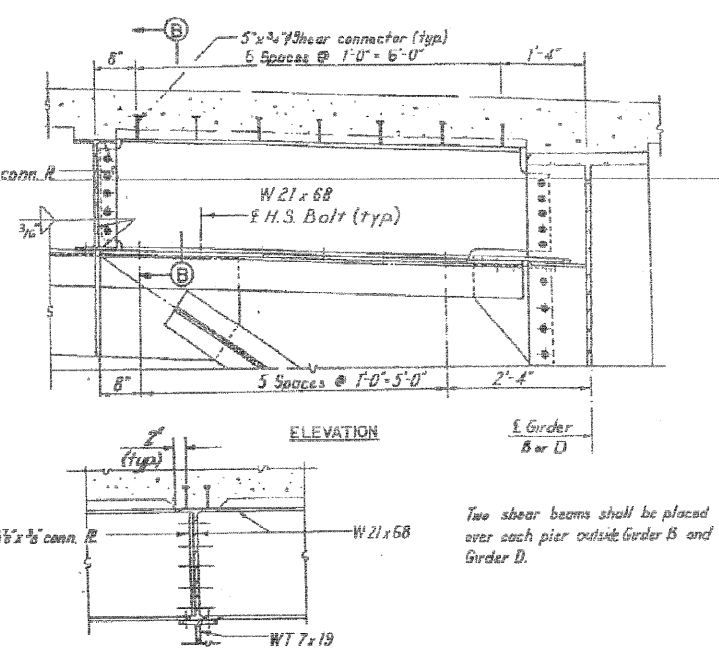
STATE OF ILLINOIS
DEPARTMENT OF TRANSPORTATION



TYPICAL CROSS FRAME

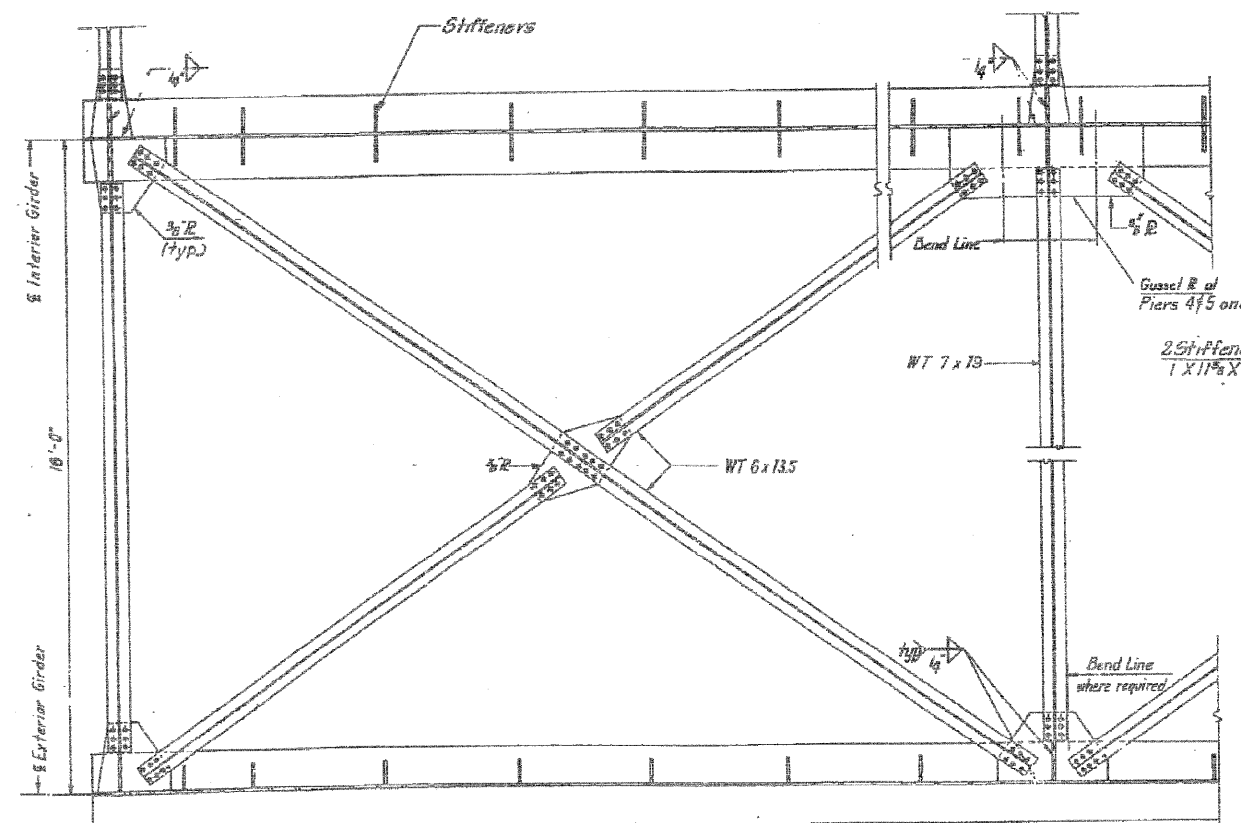


CROSS FRAME CONNECTION

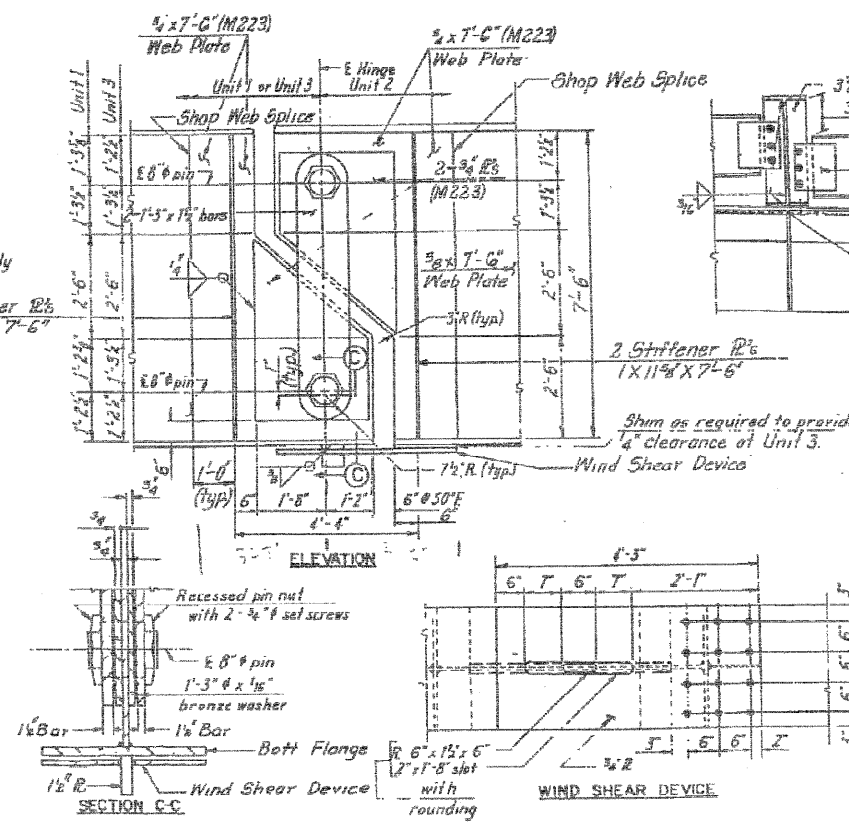


SHEAR BEAM

END DIAPHRAGM



LATERAL BRACING



HINGE DETAILS

Notes:
8" pin shall be Alloy Steel Forging ASTM A-237, Class C, normalized and tempered Web plates and hanger bars shall be AASHTO M223 structural steel. Pin nuts shall be AASHTO M193 steel. The bronze washers shall be ASTM B22-61 alloy E.
The diameter of the pin hole shall not exceed that of the pin by more than 1/32" and the finish of the pin and pin hole contact surfaces shall conform to A.S.A. 125. The pin nuts shall be adjusted to allow free movement of the links before the set screws are placed.

FOR INFORMATION ONLY

EXISTING STRUCTURAL STEEL DETAILS
S.N. 016-0540

DESIGNED	B. Sauter
CHECKED	E. Mroczek
DRAWN	R. Danley
CHECKED	B. Sauter

Ciorba Group, Inc.
CONSULTING ENGINEERS
5507 North Cumberland Avenue, Suite 402 Chicago, Illinois 60656
Tel. 773.775.4009 Fax 773.775.4014 Email chicago@ciorba.com

SHEET NO. S-27	F.A.U. RTE.	SECTION	COUNTY	TOTAL SHEETS	SHEET NO.
	2697	142 B-1-I	COOK	48	41
S-27 SHEETS			CONTRACT NO. 60D89		
FED. ROAD DIST. NO.		ILLINOIS FED. AID PROJECT			

r:\proj\3329\3329_30\design\structural\wood\concrete_repair\3329_30_27 Existing Structural Steel Details.sht 2/4/2009 rdnley