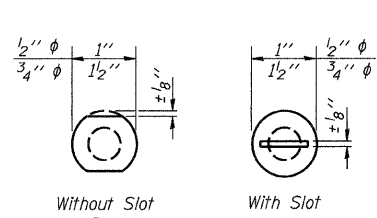
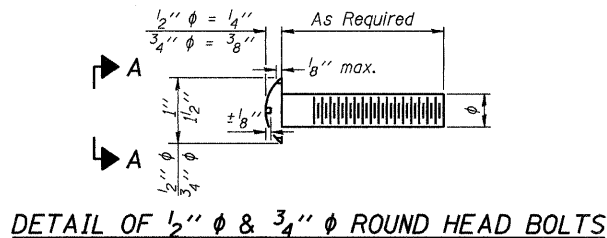


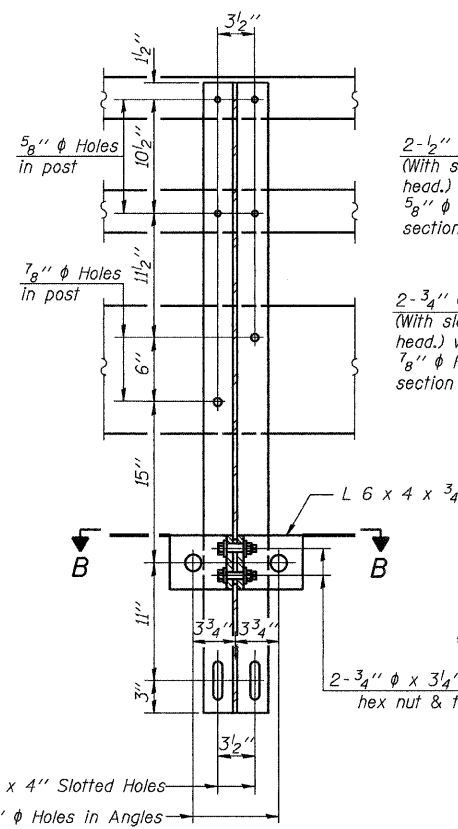
STATE OF ILLINOIS
DEPARTMENT OF TRANSPORTATION



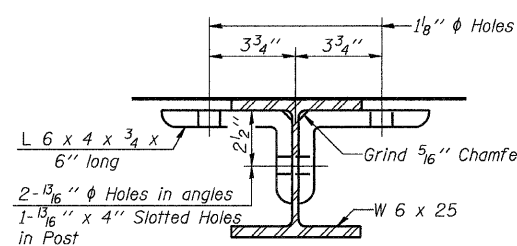
VIEW A-A



DETAIL OF 1/2" ϕ & 3/4" ϕ ROUND HEAD BOLTS

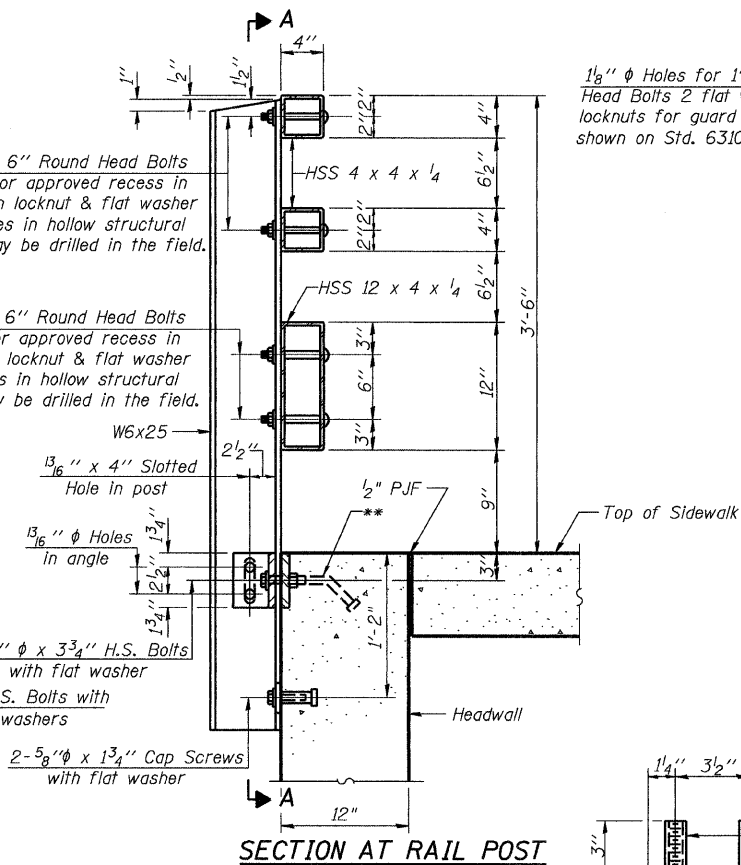


SECTION A-A

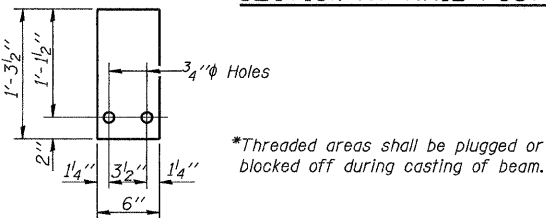


SECTION B-B

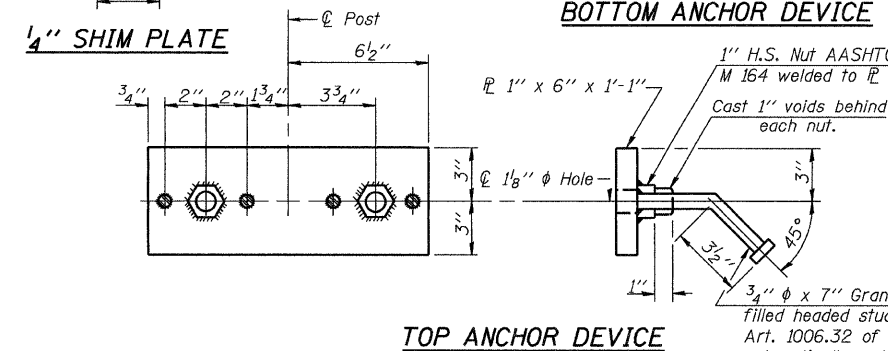
(10'-6" Maximum Post Spacing)



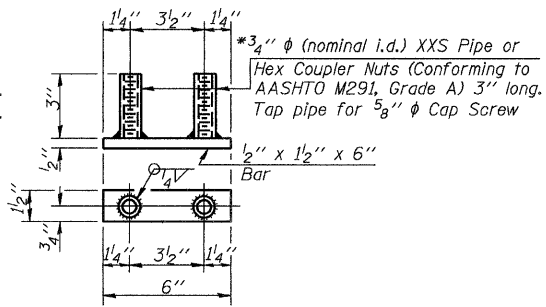
SECTION AT RAIL POST



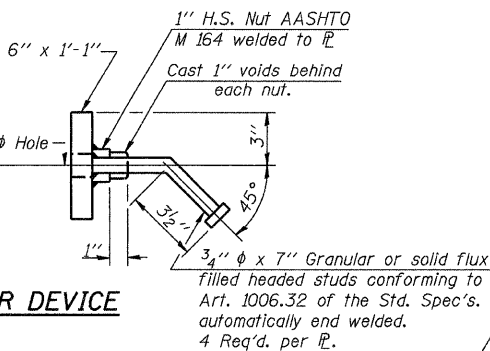
1/4" SHIM PLATE



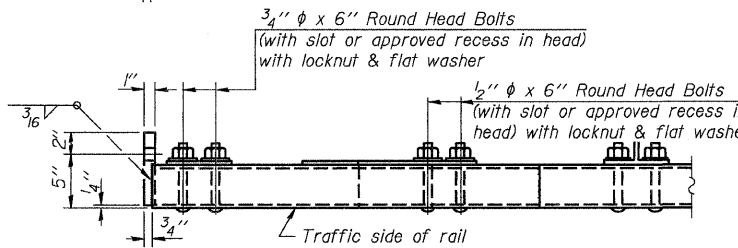
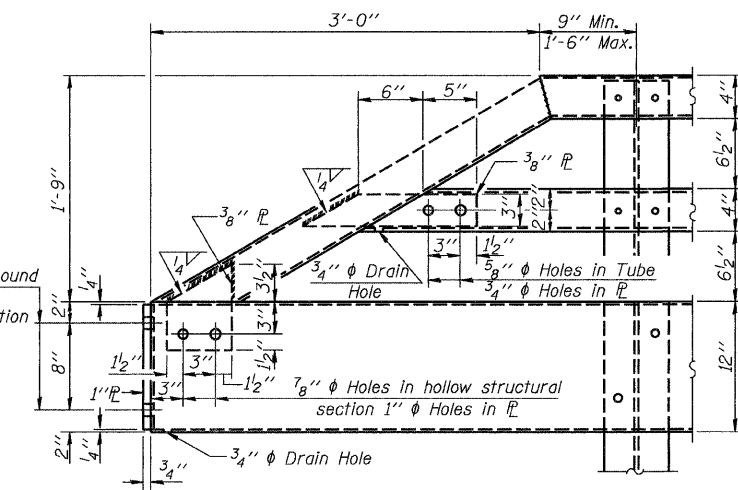
TOP ANCHOR DEVICE



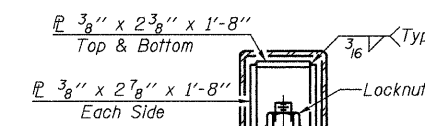
BOTTOM ANCHOR DEVICE



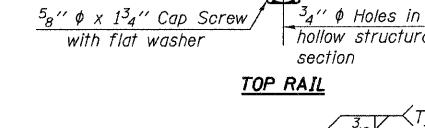
TOP ANCHOR DEVICE



END OF RAIL DETAILS



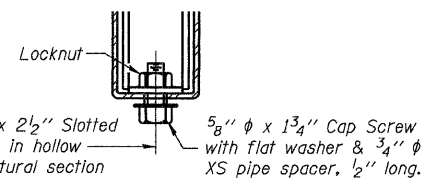
TOP RAIL



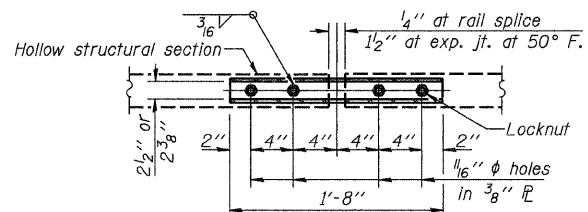
BOTTOM RAIL

SECTIONS AT RAIL SPLICE

All field drilled holes shall be coated with an approved zinc rich paint before erection.
For multi-span bridges, sufficient 1/4" x 6" x 1'-3/2" galvanized steel shims shall be provided to align rail between adjacent spans. Cost included with Steel Railing, Type TP-1.
All steel rail elements shall be galvanized according to Article 509.05 of the Standard Specifications.
**The studs of the anchor devices shall be placed below the top reinforcement bars and the outermost longitudinal reinforcement bar shall be placed directly above the studs of the rail post anchor device.



RAIL SPLICE CONNECTION AT EXPANSION JT.



PLAN-BOTTOM, SPLICE R TYPICAL

BILL OF MATERIAL

Item	Unit	Quantity
Steel Railing, Type TP-1	Foot	(72.7)

STEEL RAILING, TYPE TP-1

COLLINS ENGINEERS	SHEET NO. S10 OF S11 SHEETS	F.A.U. RTE.	SECTION	COUNTY	TOTAL SHEETS	SHEET NO.
		2774	0306T	COOK	55	35
DESIGNED: LDB	CHECKED: JMH	SN: 016-2848		CONTRACT NO. 60C07		
DATE: 3/27/09	DRAWN: DR	FED. ROAD DIST. NO. - ILLINOIS FED. AID PROJECT				