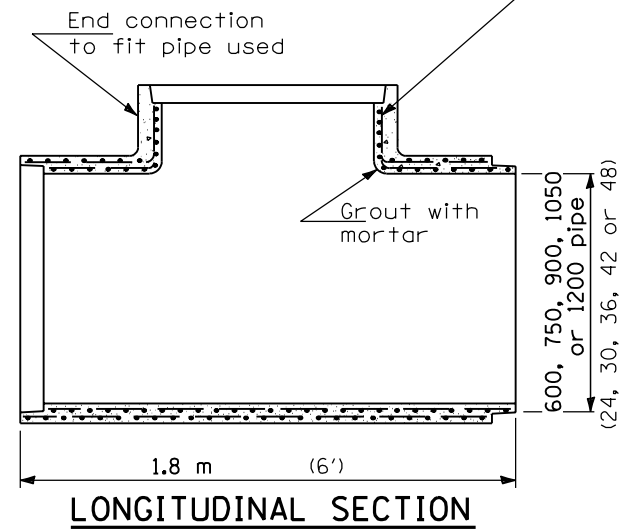
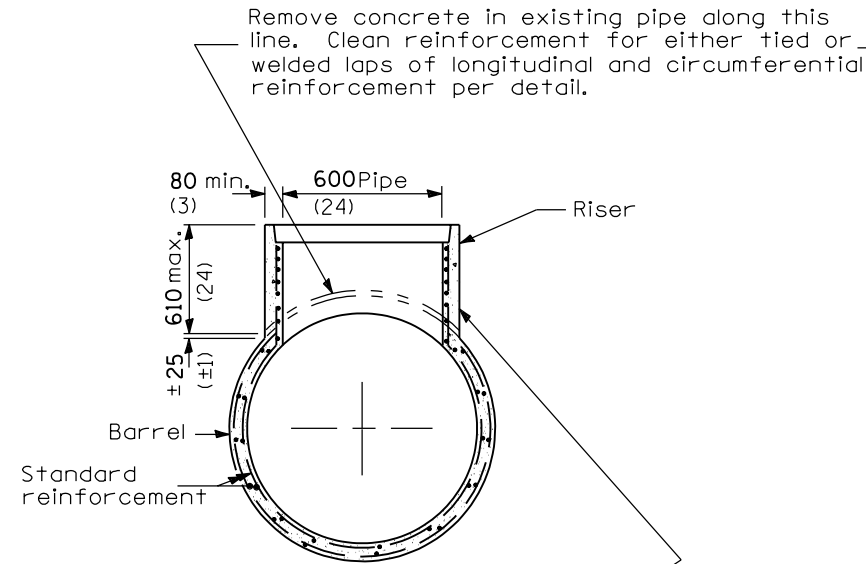


Inner Cage circumferential reinforcement = $212 \text{ mm}^2/\text{m}$ (0.10 sq. in./ft.) (min.), longitudinal reinforcement is same as for 900 (36) riser.

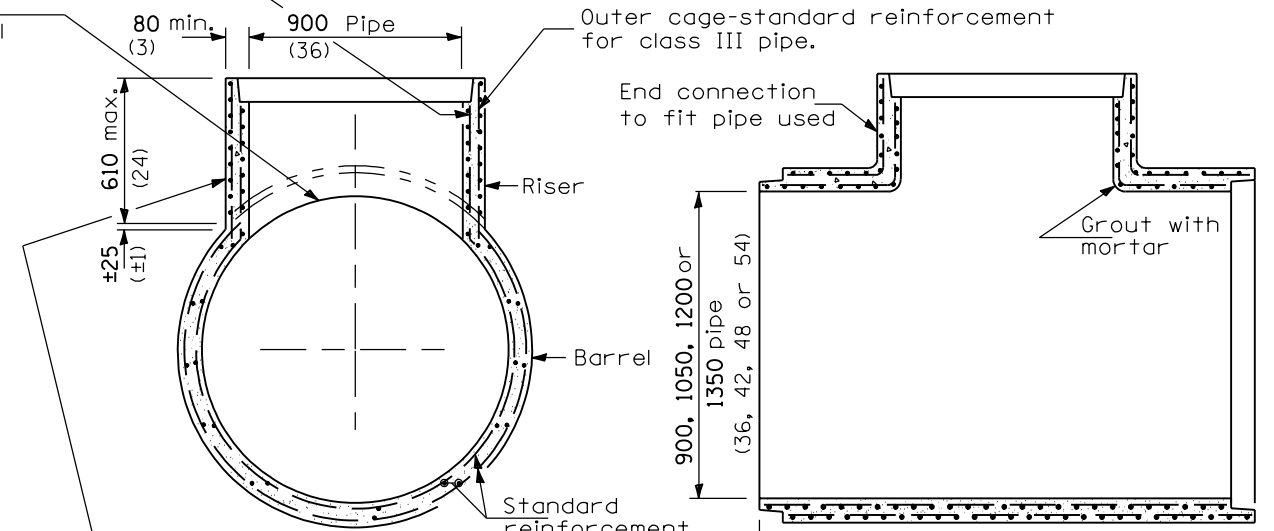


LONGITUDINAL SECTION

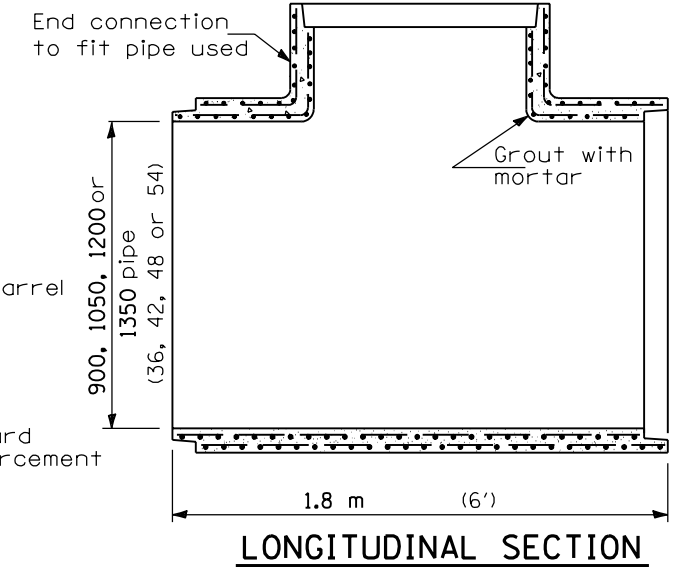


TRANSVERSE SECTION

Inner cage-circumferential reinforcement = $360 \text{ mm}^2/\text{m}$ (0.17 sq. in./ft.) (min.) longitudinal reinforcement = $104 \text{ mm}^2/\text{m}$ (0.049 sq. in./ft.) (min.) spaced at 150 (6) cts. max. or equivalent to 4.496 mm (7 ga.) spaced at 150 (6) cts.

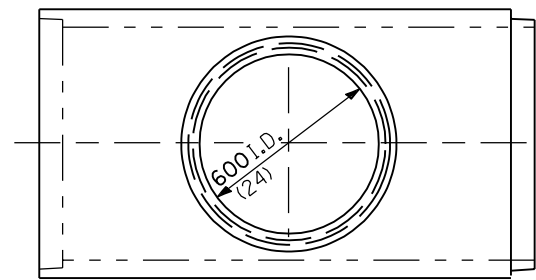


TRANSVERSE SECTION

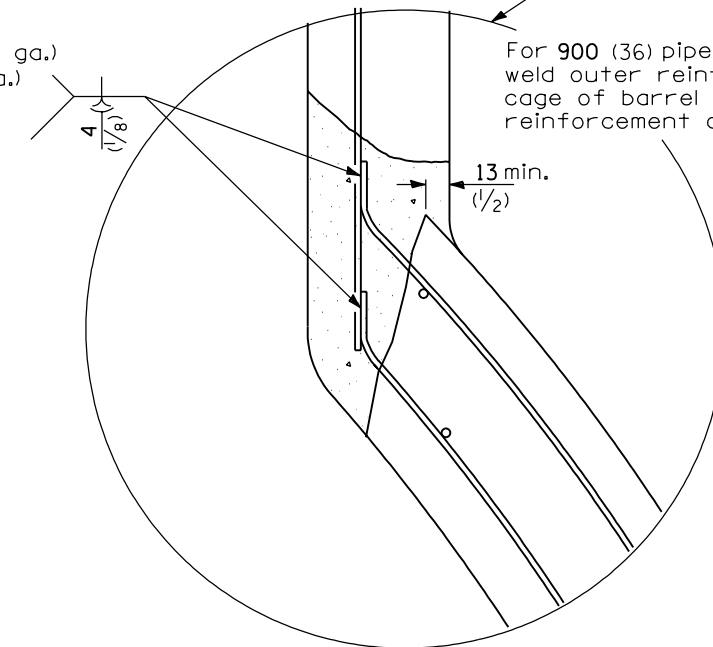


LONGITUDINAL SECTION

Weld $20 \frac{3}{4}$ min. for wire 10.008 thru 7.188 (0000 thru 1 ga.)
Weld $10 \frac{3}{8}$ min. for wire 7.188 thru 4.496 (2 thru 7 ga.)
(other wires shall be tied per detail.)

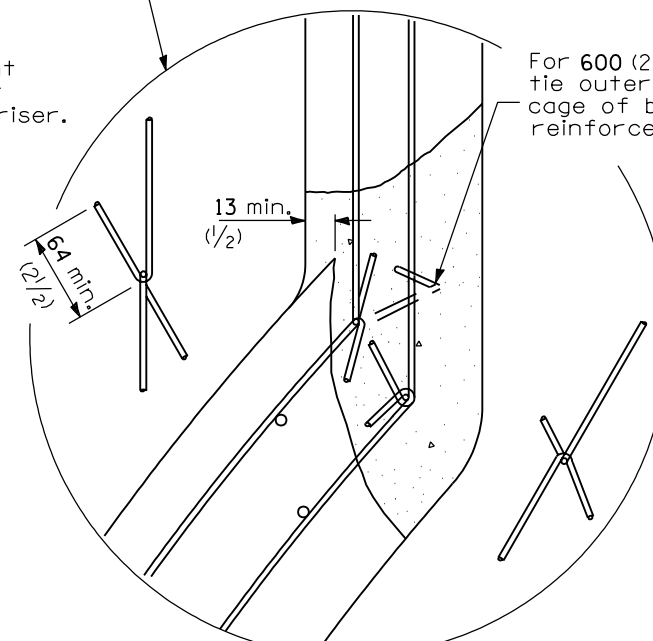


PLAN
Tee with 600 (24) Riser



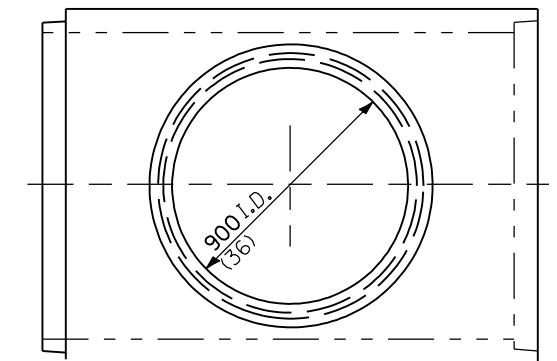
Welded Lap

For 900 (36) pipe riser, weld outer reinforcement cage of barrel to outer reinforcement cage of riser.



Tied Lap

For 600 (24) pipe riser, tie outer reinforcement cage of barrel to inner reinforcement cage of riser.



PLAN
Tee with 900 (36) Riser

All dimensions are in millimeters (inches) unless otherwise shown.

Illinois Department of Transportation

APPROVED January 1, 1997
Ralph E. Anderson
ENGINEER OF BRIDGES AND STRUCTURES

APPROVED January 1, 1997
Ray Stoddard
ENGINEER OF DESIGN AND ENVIRONMENT

ISSUED 1-1-97

| DATE | REVISIONS |
|---------|---------------------------------------|
| 1-1-97 | Renum. Standard 2263-4. |
| 6-15-94 | Moved G.N. to Specs. Added Metric. |

**REINFORCED CONCRETE
PIPE TEE**

STANDARD 542606