

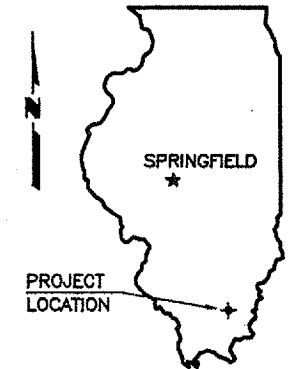
CONTRACT NO. 99197

ROUTE	SECTION	COUNTY	TOTAL SHEETS	SHEET NO.
FAS 896	03-00134-00-RS	SALINE	4	1
PROJECT NO. RS-165 (21)				

STATE OF ILLINOIS
DEPARTMENT OF TRANSPORTATION
PLANS FOR PROPOSED

SURFACE TRANSPORTATION PROGRAM

FAS ROUTE 896
SECTION 03-00134-00-RS
PROJECT NO. RS-165 (21)
JOB NO. C-99-522-03



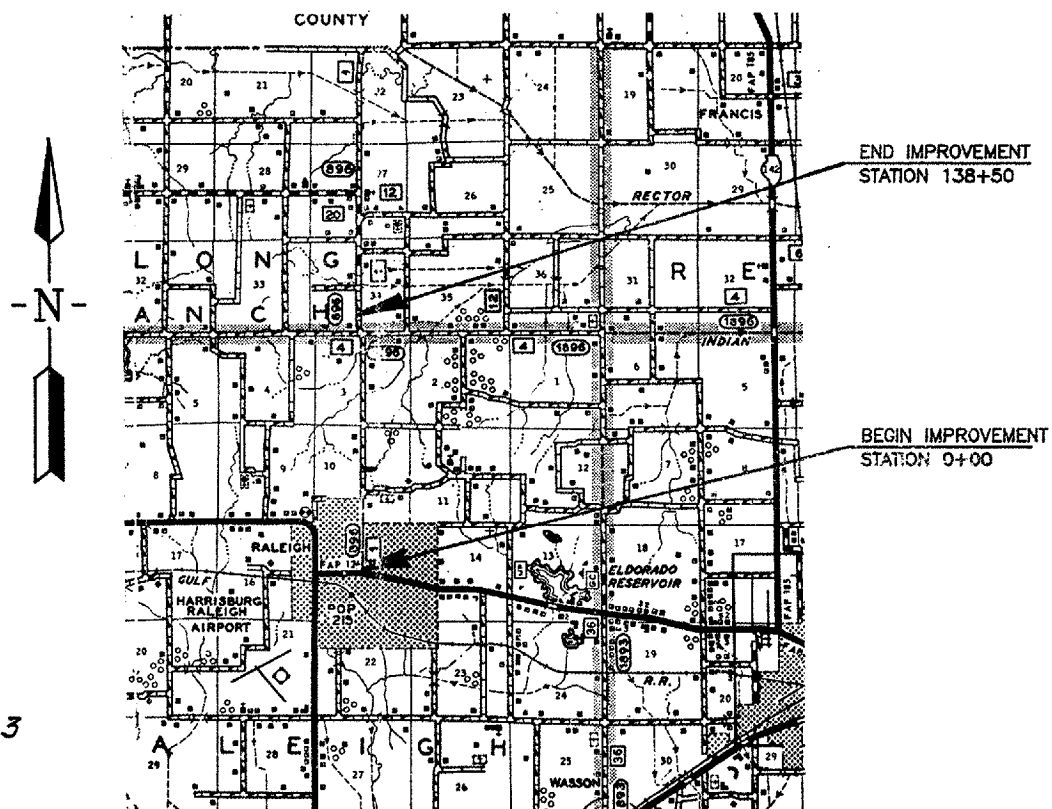
SUMMARY OF QUANTITIES

CODE NO.	PAY ITEM	UNIT	TOTAL
X4066416	BITUMINOUS CONCRETE SURFACE COURSE, SUPERPAVE, MIX "C", N70	TON	4,535
X4066770	LEVELING BINDER (MACHINE METHOD), SUPERPAVE N70	TON	4,430
XX206400	MAILBOX POST	EACH	8
40200800	AGGREGATE SURFACE COURSE, TYPE B	TON	70
40600100	BITUMINOUS MATERIALS (PRIME COAT)	GALLON	790
40600300	AGGREGATE (PRIME COAT)	TON	12
48101200	AGGREGATE SHOULDERS, TYPE B	TON	5,800
72000100	SIGN PANEL - TYPE 1	SQ FT	89.5
72800100	TELESCOPING STEEL SIGN SUPPORT	FOOT	256.5
78001110	PAINT PAVEMENT MARKING - LINE 4"	FOOT	40,580

INDEX OF SHEETS

1. COVER SHEET
 2. TYPICAL SECTIONS
 3. TYPICAL ENTRANCE & SIDE ROAD DETAILS
 4. MISCELLANEOUS DETAILS
- STANDARDS
- | | |
|-----------|-----------------------------|
| 701001 | TRAFFIC CONTROL |
| 701006-01 | TRAFFIC CONTROL |
| 701011 | TRAFFIC CONTROL |
| 701301-01 | TRAFFIC CONTROL |
| 701306 | TRAFFIC CONTROL |
| 701311-02 | TRAFFIC CONTROL |
| 702001-04 | TRAFFIC CONTROL DEVICES |
| 720001 | SIGN PANEL MOUNTING DETAILS |
| 720006 | SIGN PANEL ERECTION DETAILS |
| 780001-01 | TYPICAL PAVEMENT MARKINGS |
| BLR 24-1 | MAILBOX TURNOUTS |

SALINE COUNTY



LOCATION MAP

SCALE: 1" = 2 MILES

NET LENGTH OF IMPROVEMENT = 13,850.00 FT. = 2.6231 MILES

CLASSIFICATION : COLLECTOR
ADT : 1,060
DESIGN SPEED : 50 MPH

CONTRACT NO. 99197



12-23-03

E. MILLER ENGINEERING, INC.
CONSULTING ENGINEERS
HARRISBURG, ILLINOIS

Edward W. Miller
PROFESSIONAL ENGINEER
#062-025277
EXPIRES NOV. 30, 2005

STATE OF ILLINOIS
DEPARTMENT OF TRANSPORTATION

APPROVED 01-30-2004

LOCAL AGENCY REPRESENTATIVE

PASSED FORWARD 2004

DISTRICT ENGINEER OF LOCAL ROADS & STREETS

APPROVED February 17 2004

DISTRICT ENGINEER