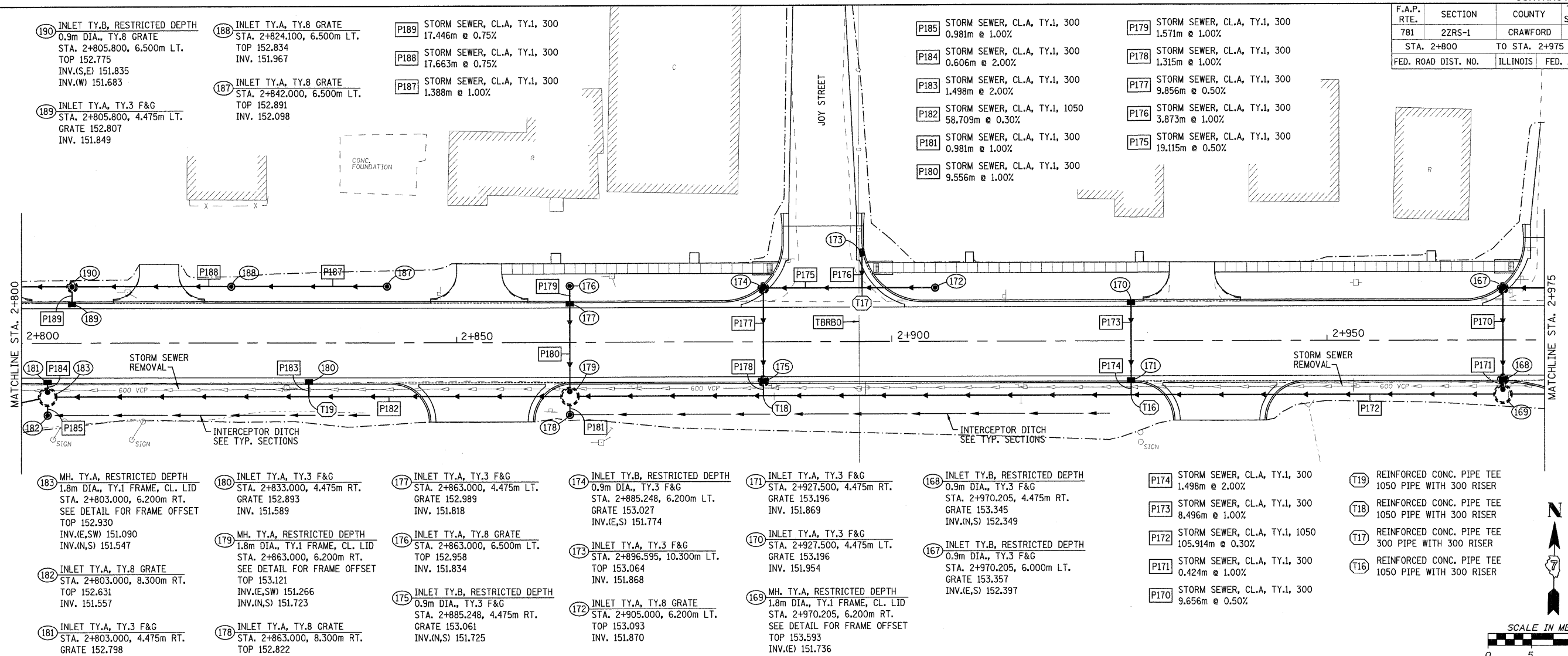
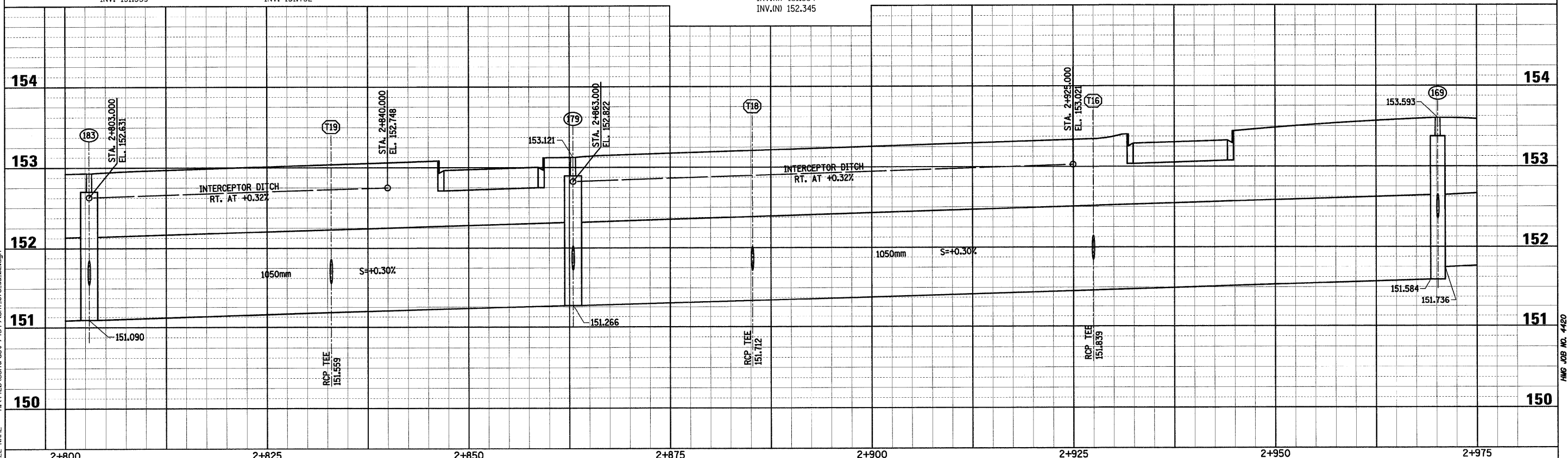
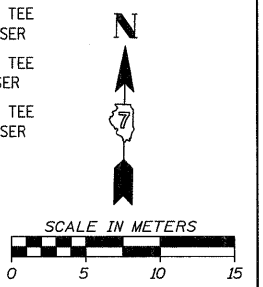


F.A.P. RTE.	SECTION	COUNTY	TOTAL SHEETS	SHEET NO.
781	22RS-1	CRAWFORD	191	76
STA. 2+800		TO STA. 2+975		
FED. ROAD DIST. NO.		ILLINOIS	FED. AID PROJECT	



- 190 INLET TY.B, RESTRICTED DEPTH 0.9m DIA., TY.8 GRATE STA. 2+805.800, 6.500m LT. TOP 152.775 INV.(S,E) 151.835 INV.(W) 151.683
- 189 INLET TY.A, TY.3 F&G STA. 2+805.800, 4.475m LT. GRATE 152.807 INV. 151.849
- 188 INLET TY.A, TY.8 GRATE STA. 2+824.100, 6.500m LT. TOP 152.834 INV. 151.967
- 187 INLET TY.A, TY.8 GRATE STA. 2+842.000, 6.500m LT. TOP 152.891 INV. 152.098
- P189 STORM SEWER, CL.A, TY.1, 300 17.446m @ 0.75%
- P188 STORM SEWER, CL.A, TY.1, 300 17.663m @ 0.75%
- P187 STORM SEWER, CL.A, TY.1, 300 1.388m @ 1.00%
- P185 STORM SEWER, CL.A, TY.1, 300 0.981m @ 1.00%
- P184 STORM SEWER, CL.A, TY.1, 300 0.606m @ 2.00%
- P183 STORM SEWER, CL.A, TY.1, 300 1.498m @ 2.00%
- P182 STORM SEWER, CL.A, TY.1, 1050 58.709m @ 0.30%
- P181 STORM SEWER, CL.A, TY.1, 300 0.981m @ 1.00%
- P180 STORM SEWER, CL.A, TY.1, 300 9.556m @ 1.00%
- P179 STORM SEWER, CL.A, TY.1, 300 1.571m @ 1.00%
- P178 STORM SEWER, CL.A, TY.1, 300 1.315m @ 1.00%
- P177 STORM SEWER, CL.A, TY.1, 300 9.856m @ 0.50%
- P176 STORM SEWER, CL.A, TY.1, 300 3.873m @ 1.00%
- P175 STORM SEWER, CL.A, TY.1, 300 19.115m @ 0.50%
- 183 MH, TY.A, RESTRICTED DEPTH 1.8m DIA., TY.1 FRAME, CL. LID STA. 2+803.000, 6.200m RT. SEE DETAIL FOR FRAME OFFSET TOP 152.930 INV.(E,S,W) 151.090 INV.(N,S) 151.547
- 182 INLET TY.A, TY.8 GRATE STA. 2+803.000, 8.300m RT. TOP 152.631 INV. 151.557
- 181 INLET TY.A, TY.3 F&G STA. 2+803.000, 4.475m RT. GRATE 152.798 INV. 151.559
- 180 INLET TY.A, TY.3 F&G STA. 2+833.000, 4.475m RT. GRATE 152.893 INV. 151.589
- 179 MH, TY.A, RESTRICTED DEPTH 1.8m DIA., TY.1 FRAME, CL. LID STA. 2+863.000, 6.200m RT. SEE DETAIL FOR FRAME OFFSET TOP 153.121 INV.(E,S,W) 151.266 INV.(N,S) 151.723
- 178 INLET TY.A, TY.8 GRATE STA. 2+863.000, 8.300m RT. TOP 152.822 INV. 151.732
- 177 INLET TY.A, TY.3 F&G STA. 2+863.000, 4.475m LT. GRATE 152.989 INV. 151.818
- 176 INLET TY.A, TY.8 GRATE STA. 2+863.000, 6.500m LT. TOP 152.958 INV. 151.834
- 175 INLET TY.B, RESTRICTED DEPTH 0.9m DIA., TY.3 F&G STA. 2+885.248, 4.475m RT. GRATE 153.061 INV.(N,S) 151.725
- 174 INLET TY.B, RESTRICTED DEPTH 0.9m DIA., TY.3 F&G STA. 2+885.248, 6.200m LT. GRATE 153.027 INV.(E,S) 151.774
- 173 INLET TY.A, TY.3 F&G STA. 2+896.595, 10.300m LT. TOP 153.064 INV. 151.868
- 172 INLET TY.A, TY.8 GRATE STA. 2+905.000, 6.200m LT. TOP 153.093 INV. 151.870
- 171 INLET TY.A, TY.3 F&G STA. 2+927.500, 4.475m RT. GRATE 153.196 INV. 151.869
- 170 INLET TY.A, TY.3 F&G STA. 2+927.500, 4.475m LT. GRATE 153.196 INV. 151.954
- 169 MH, TY.A, RESTRICTED DEPTH 1.8m DIA., TY.1 FRAME, CL. LID STA. 2+970.205, 6.200m RT. SEE DETAIL FOR FRAME OFFSET TOP 153.593 INV.(E) 151.736 INV.(W) 151.584 INV.(N) 152.345
- 168 INLET TY.B, RESTRICTED DEPTH 0.9m DIA., TY.3 F&G STA. 2+970.205, 4.475m RT. GRATE 153.345 INV.(N,S) 152.349
- 167 INLET TY.B, RESTRICTED DEPTH 0.9m DIA., TY.3 F&G STA. 2+970.205, 6.000m LT. GRATE 153.357 INV.(E,S) 152.397
- P174 STORM SEWER, CL.A, TY.1, 300 1.498m @ 2.00%
- P173 STORM SEWER, CL.A, TY.1, 300 8.496m @ 1.00%
- P172 STORM SEWER, CL.A, TY.1, 1050 105.914m @ 0.30%
- P171 STORM SEWER, CL.A, TY.1, 300 0.424m @ 1.00%
- P170 STORM SEWER, CL.A, TY.1, 300 9.656m @ 0.50%
- T19 REINFORCED CONC. PIPE TEE 1050 PIPE WITH 300 RISER
- T18 REINFORCED CONC. PIPE TEE 1050 PIPE WITH 300 RISER
- T17 REINFORCED CONC. PIPE TEE 300 PIPE WITH 300 RISER
- T16 REINFORCED CONC. PIPE TEE 1050 PIPE WITH 300 RISER



PLOT DATE = 2/5/2009  
 FILE NAME = H:\4420\Contract 74349\SHI\_076.asa.02.dgn