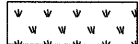





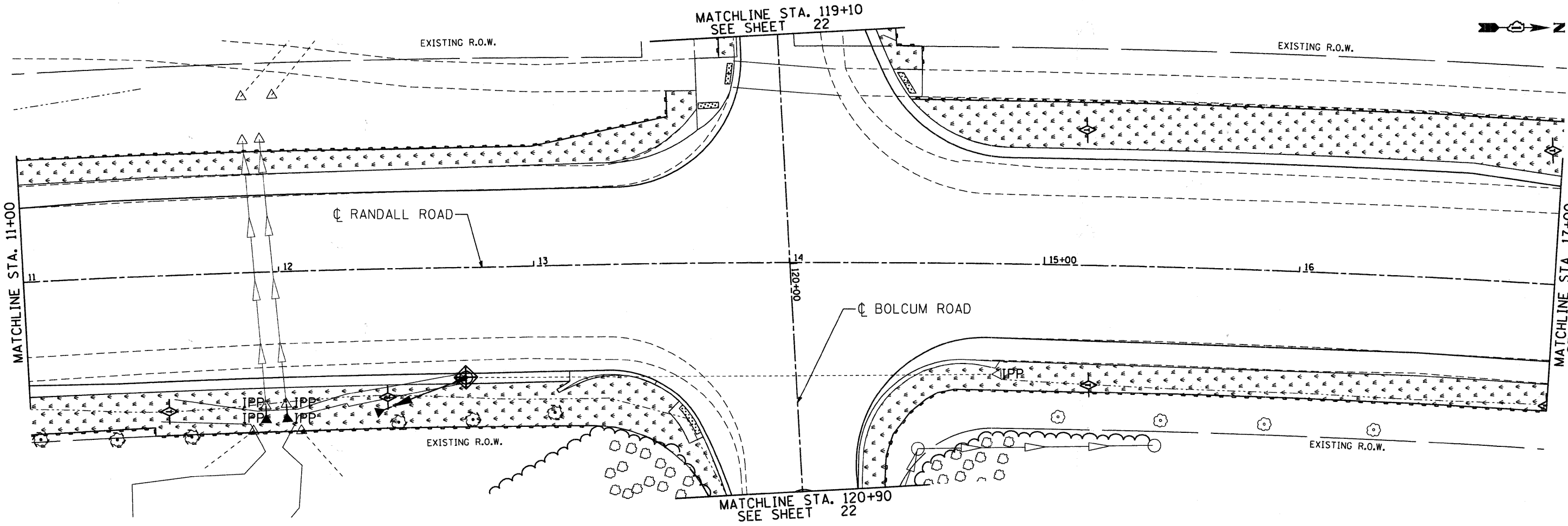


**LEGEND**

-  TOPSOIL FURNISH AND PLACE, 4", SEEDING CLASS 2A, AND EROSION CONTROL BLANKET
-  TREE TRUNK PROTECTION
-  INLET AND PIPE PROTECTION
-  INLET FILTER
-  TEMPORARY DITCH CHECK
-  PERIMETER EROSION BARRIER

NOTE: ALL AREAS OF BARE GROUND SHALL BE TEMPORARILY SEEDED EVERY 7 DAYS UNTIL PERMANENT EROSION CONTROL IS IN PLACE



FILE NAME = m:\p\3383\drain\eros.Landscape\3383-eros.dwg



**Ciorba Group, Inc.**  
 CONSULTING ENGINEERS  
 5507 North Cumberland Avenue, Suite 402  
 Chicago, Illinois 60656  
 Tel. 773.775.4009 Fax 773.775.4014

USER NAME = espino	DESIGNED - CLG	REVISED -
PLOT SCALE = 20.0000' / IN.	DRAWN - EPS	REVISED -
PLOT DATE = 12/28/2010	CHECKED - MJL	REVISED -
	DATE - 12-20-2010	REVISED -

**KANE COUNTY DIVISION OF TRANSPORTATION**

**LANDSCAPING AND EROSION CONTROL PLAN**  
 SCALE: 1" = 20'  
 SHEET NO. OF SHEETS STA. TO STA.

F.A.S. RTE. 336	SECTION 04-00325-00-TL	COUNTY KANE	TOTAL SHEETS 54	SHEET NO. 20
CONTRACT NO. 63547				
FED. ROAD DIST. NO. 1 (ILLINOIS) FED. AID PROJECT				