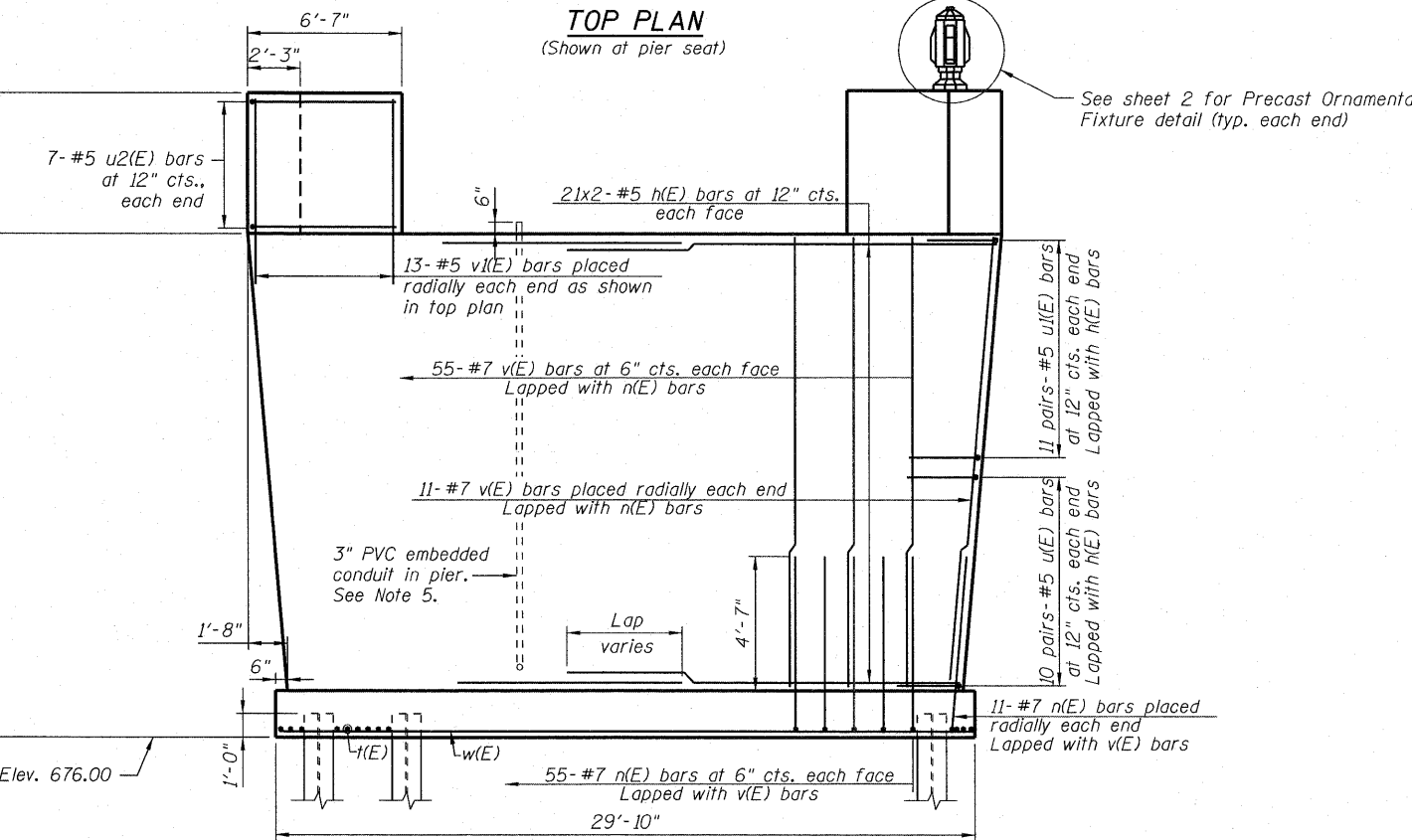
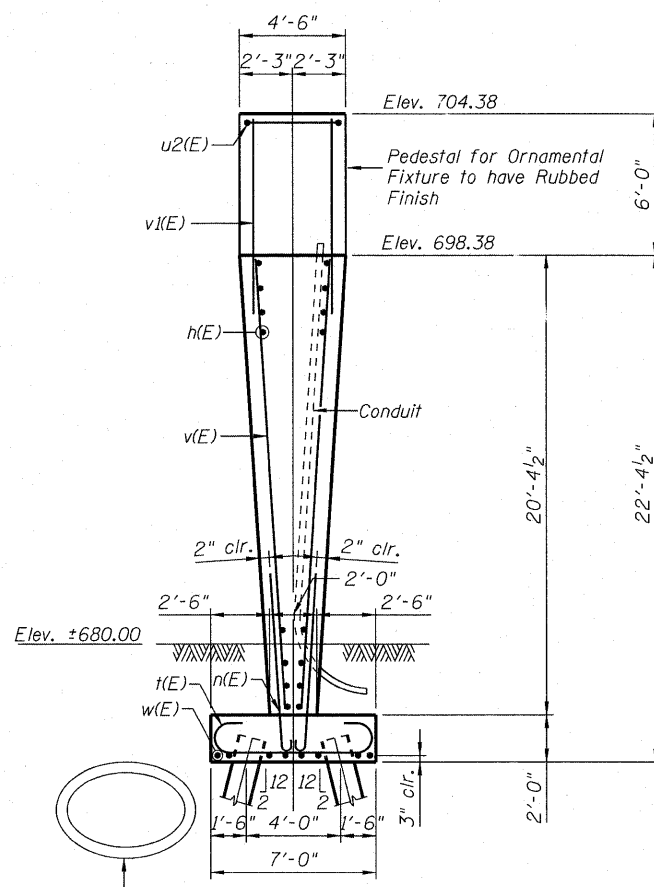
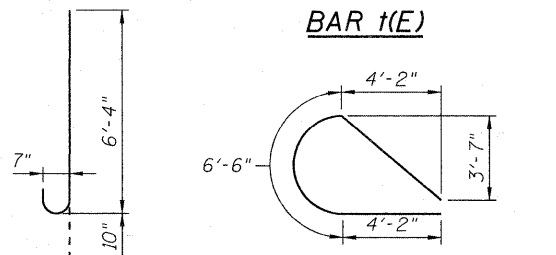
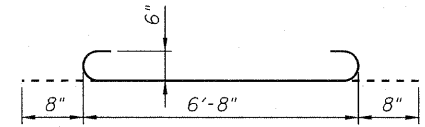
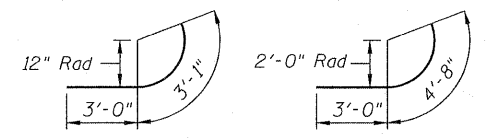
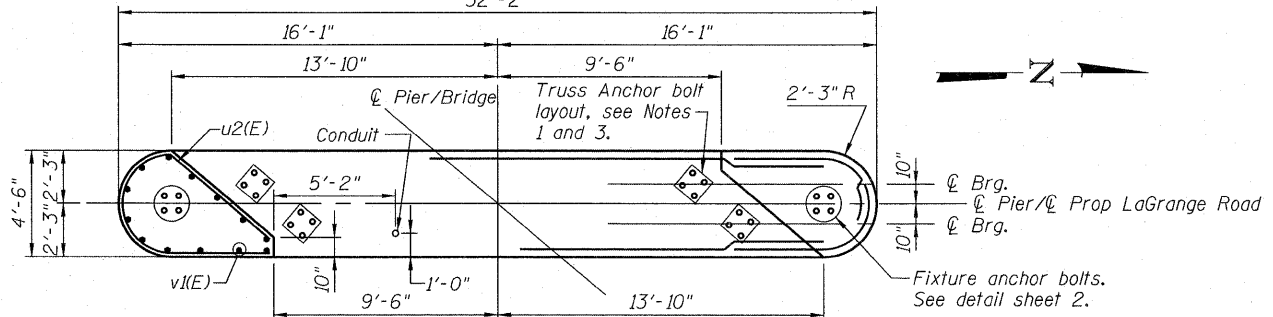


STATE OF ILLINOIS
DEPARTMENT OF TRANSPORTATION

32'-2"



BILL OF MATERIAL

Bar	No.	Size	Length	Shape
h(E)	84	#5	17'-4"	—
n(E)	132	#7	7'-2"	—
t(E)	36	#6	8'-0"	—
u(E)	40	#5	6'-1"	—
u1(E)	44	#5	7'-8"	—
u2(E)	14	#5	16'-2"	—
w(E)	8	#5	29'-6"	—
v(E)	132	#7	19'-10"	—
v1(E)	26	#5	8'-0"	—
Structure Excavation		Cu. Yd.	43	
Concrete Structures		Cu. Yd.	97.3	
Reinforcement Bars, Epoxy Coated		Pound	10,550	
Furnishing Steel Piles HP12x53		Foot	870	
Driving Piles		Foot	870	
Test Pile Steel HP12x53		Each	1	
Pile Shoes		Each	14	
Concrete Sealer		Sq. Ft.	1,545	

Bars indicated thus 1 x 3-#5 etc. indicates 1 line of bars with 3 lengths per line.

Notes:

1. Space reinforcement in cap to miss anchor bolts.
2. For details of piles, see sheet 9.
3. Final truss, Q brg. bearings and anchor bolt sizes, embedment, and layout to be determined by truss manufacturer. Pre-engineered truss shop drawings shall be approved prior to construction of the pier. Contractor shall verify all dimensions and elevations with final approved shop drawings. See special provisions. E.F. denotes each face.
4. Test pile shall be driven to 110 percent of the Nominal Required Bearing indicated in the pile data information.
5. 3" PVC conduit to extend out from Pier and be capped for future connection.

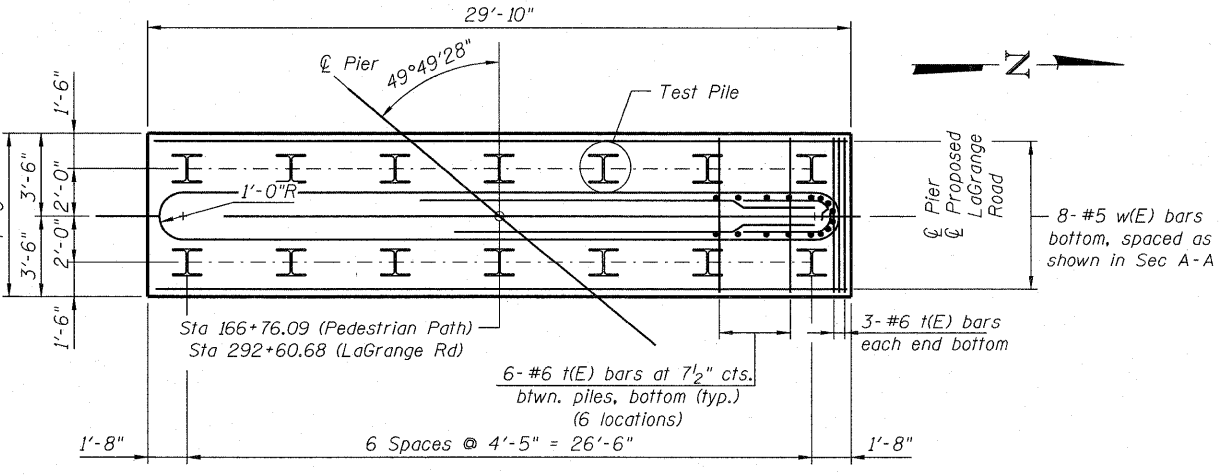
Existing 38"x60" pipe to be located prior to driving piles. Pipe to be protected and maintained during construction.

MIN. LAP
#5 Top = 2'-11"
#7 Others = 4'-2"

PILE DATA

Type: Steel HP12x53 w/ Pile Shoes
Nominal Required Bearing: 200 kips
Factored Resistance Available: 110 kips
Est. Length: 65 feet
No. Production Piles: 13
No. Test Piles: 1

DESIGNED	PMH
CHECKED	MGB
DRAWN	PMH
CHECKED	MGB



McDonough Associates Inc.
Engineers / Architects
130 East Randolph Street Chicago, Illinois 60601

SHEET NO. 8 12 SHEETS	F.A.P RTE.	SECTION	COUNTY	TOTAL SHEETS	SHEET NO.
	330	73 R-B	COOK	136	85
CONTRACT NO. 60K64					
DATE: 12/17/10		ILLINOIS FED. AID PROJECT			