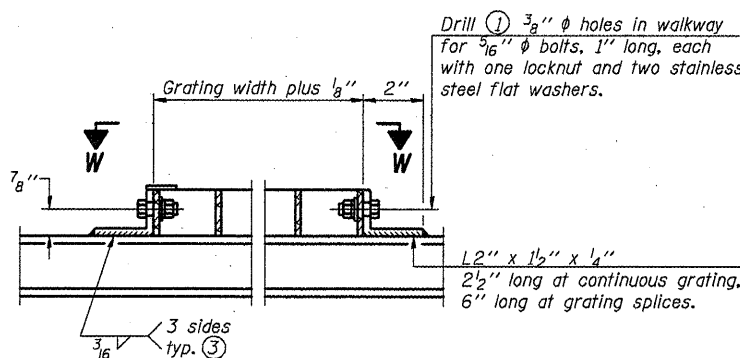


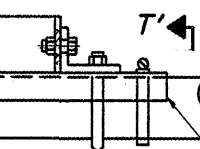
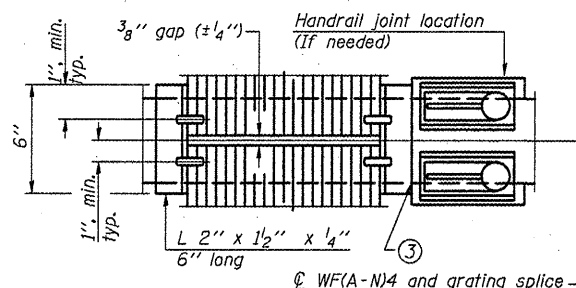
(CONTINUOUS WALKWAY GRATING)

SECTION W-W



DETAIL W
(Walkway grating)

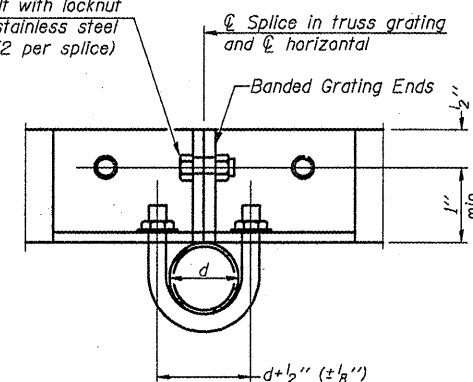
(AT WALKWAY GRATING SPLICE)



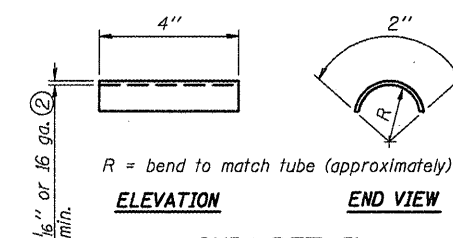
DETAIL T'

(Truss grating splice)
Details not shown same as Detail T.
Alternate materials may be used subject to the Engineer's review and approval.

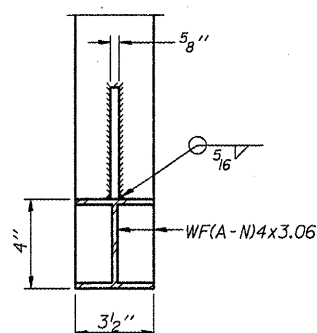
5/16" φ bolt with locknut and two stainless steel washers (2 per splice)



SECTION T'-T'

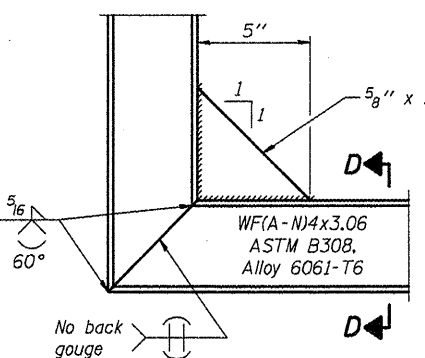


SHIM DETAIL



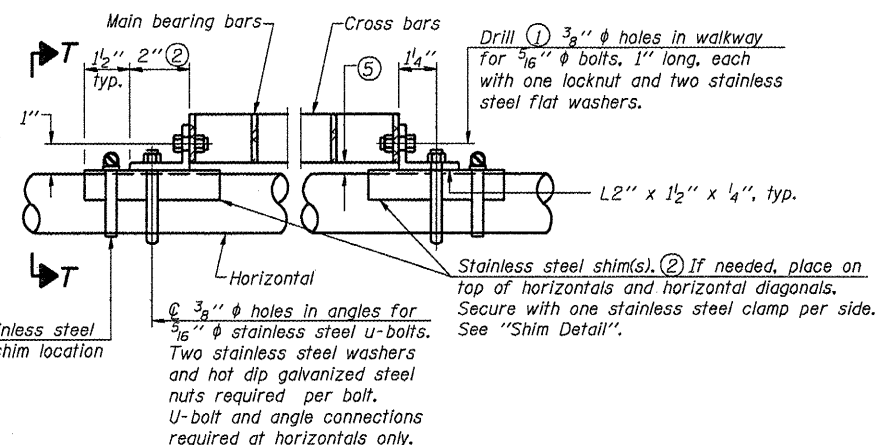
SECTION D-D

Screw type stainless steel tube clamp at shim location

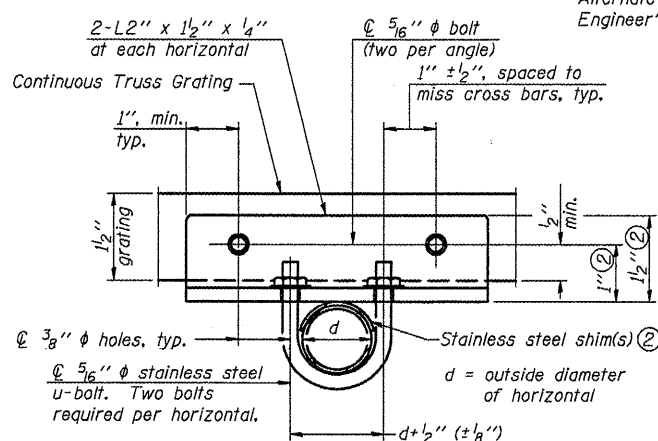


DETAIL D

SECTION B-B



DETAIL T
(Continuous Truss grating)



SECTION T-T

Structure Number	Station	A	⑥ B	C	⑥ D *
5 C 092 1074 R214.21	1922+15	II-C-A	2'-9"	5'-6"	8'-9" & VAR.
5 C 092 1074 L214.50	1937+05	II-C-A	2'-9"	5'-6"	8'-9" & VAR.
5 C 092 1074 R215.65	1996+55	II-C-A	2'-9"	5'-6"	8'-9" & VAR.
* SEE ALSO "SIGN TRUSS MOUNTING DETAILS" - SHEET #7 FOR INFORMATION NEEDED TO DETERMINE THE VARIABLE WALKWAY SUPPORT & SIGN SUPPORT LENGTHS.					

SPECIFICATIONS FOR STANDARD ALUMINUM GRATING
Main Bearing Bars (MBB) shall be 3/16" x 1/2" on 1 3/16" centers and conform to ASTM B211 Alloy 6061-T6.
Cross bars (CB) shall be 3/16" x 1/2" on 4" centers and conform to ASTM B221 Alloy 6063-T5 or 6061-T6.

OR

Aluminum Grating with modified "T" sections for main bearing bars shall meet the following requirements:
Main bars shall conform to ASTM B221 Alloy 6061-T6 and have a minimum section modulus equal to 0.0705 in.³ per bar, a depth of 1 1/2", spaced on 1 3/16" centers.
Cross bars shall conform to ASTM B221 Alloy 6063-T5 or T-42 and spaced on 4" centers.

- Drilling holes in grating may be done in shop or field, based on Contractor's preference and subject to accurate alignment.
- Stainless steel shims shall be placed as shown in Detail T if needed to compensate for alignment variations between horizontal and diagonal pipes beyond adjustment provided by angles. Thicker shims may be used subject to shims performing properly.
- If Handrail Joint present, weld angle to WF(A-N)4 and 1/4" extension bars. (See Base Sheet OSC-A-8.)
- 1/8" x 1/2" x 2" welded to handrail posts to protect locations that contact grating.
- Tube to grating gap may vary from 0 to 1/2", max. to align walkway, allow for camber, etc.
- Based on actual sign height, Ds, given on OSC-A-1.

OSC-A-7

7-1-10

*D-5 OVD SIN STR REPL 2011-17

FILE NAME =	USER NAME = bucklesj	DESIGNED - JAL	REVISED -
ct:\pwork\pwork\bucklesj\d241273\056140-shd-details.dgn		DRAWN - BBP	REVISED -
PLOT SCALE = 48.0000' / IN.		CHECKED -	REVISED -
PLOT DATE = 10/29/2010		DATE - 09/23/10	REVISED -

STATE OF ILLINOIS
DEPARTMENT OF TRANSPORTATION

CANTILEVER SIGN STRUCTURES - WALKWAY DETAILS
ALUMINUM TRUSS & STEEL POST

SCALE: SHEET NO. OF SHEETS STA. TO STA.

F.A.I. RFG.	SECTION	COUNTY	TOTAL SHEETS	SHEET NO.
74	*	VERMILION	39	24
CONTRACT NO. 46140				
ILLINOIS FED. AID PROJECT				