

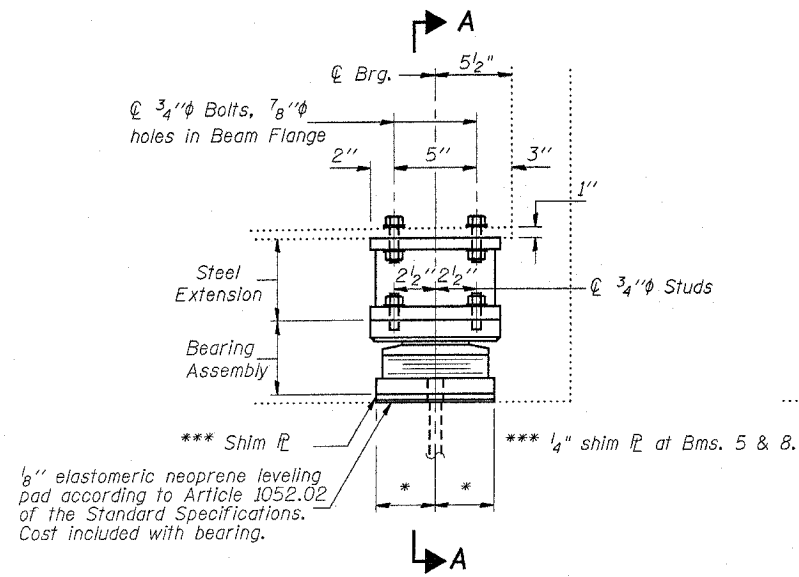
STATE OF ILLINOIS  
DEPARTMENT OF TRANSPORTATION

GIRDER REACTIONS

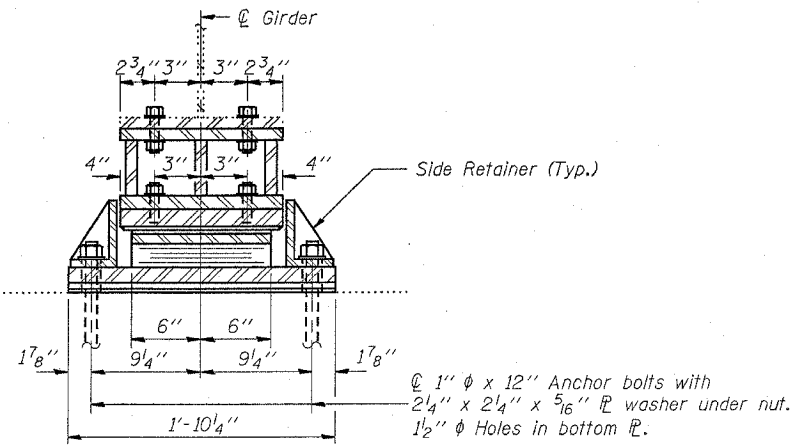
R.D.	(K)	26.1
A	(K)	37
Imp.	(K)	10.5
R (Total)	(K)	72.6

ROUTE NO.	SECTION	COUNTY	TOTAL SHEETS	SHEET NO.
FAP 320		MACON	51	43
FED. ROAD DIST. NO. 7	ILLINOIS	FED. AID PROJECT		

(126X)RS-1&135(R)RS&(BR-1)BR]  
CONTRACT NO. 90926  
SHEET 6 OF 10

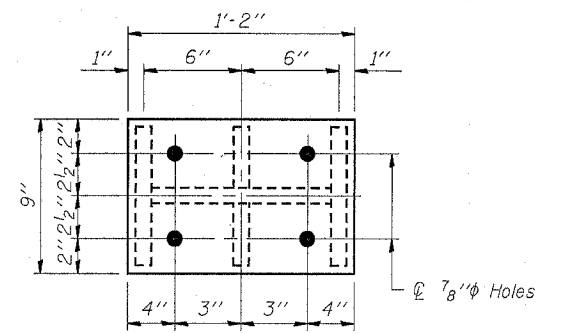


ELEVATION AT WEST ABUTMENT



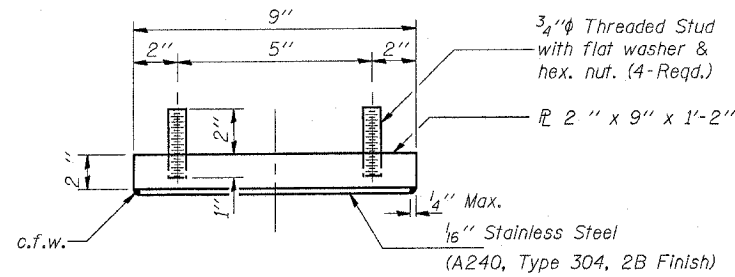
SECTION A-A

Notes: Diaphragm removal and reinstallation may be required to facilitate drilling holes. Cost shall be included in the cost of Furnishing and Erecting Structural Steel.  
New steel extensions, side retainers, shim plates, connection bolts and anchor bolts are included in Furnishing and Erecting Structural Steel.  
See Sheet 9 of 10 for Anchor Bolt Installation.  
Prior to ordering any material, the Contractor shall verify in the field all bearing height and shim thickness dimensions.  
Min. jack capacity = 40 Tons.

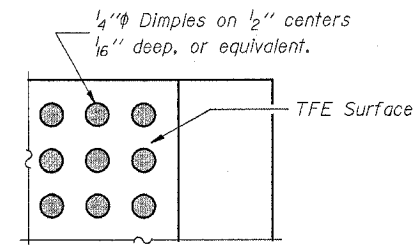


PLAN TOP AND BOTTOM PLATE

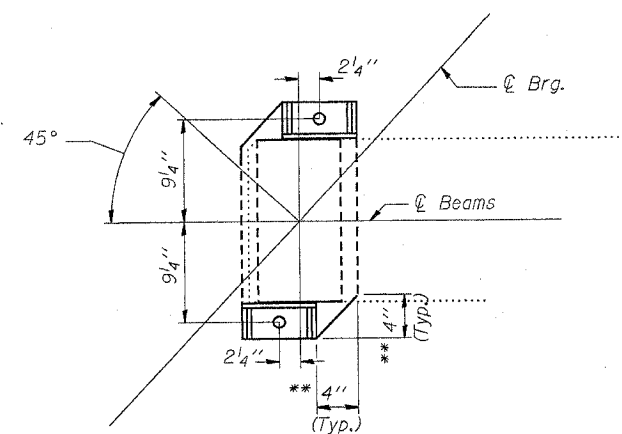
TYPE II TFE ELASTOMERIC EXP. BRG.



TOP BEARING ASSEMBLY



PLAN-TFE SURFACE

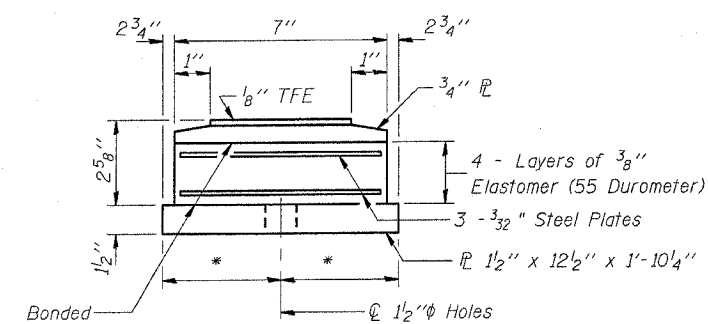


OFFSET SKETCH

\*\* Clip bottom plate as shown.

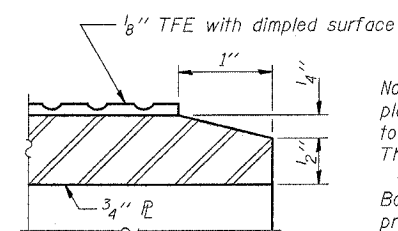
Note: The 1/8 inch TFE sheet shall be bonded directly to the top steel plate with a two-component, medium viscosity epoxy resin, conforming to the requirements of the Federal Specification MMM-A-134, Type I. The bond agent shall be applied on the full area of the contact surfaces.

Bonding of 1/8 inch TFE sheet during vulcanizing process will be permitted provided the process and method of adjusting assembly height is approved by the Engineer.

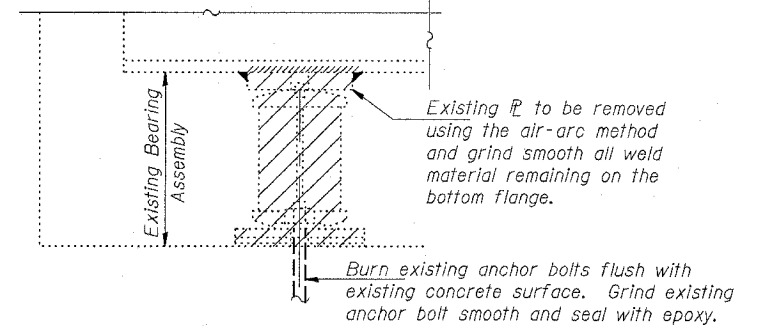


BOTTOM BEARING ASSEMBLY

\* See offset sketch for anchor bolt locations.



SECTION THRU TFE



EXISTING BEARING REMOVAL DETAIL

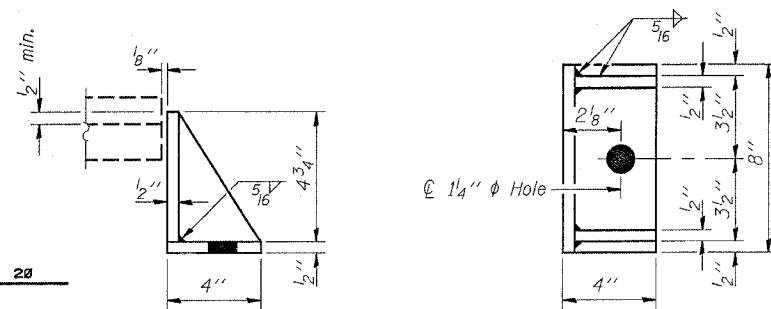
Cost shall be included with Jack and Remove Existing Bearings.

BILL OF MATERIAL

Item	Unit	Total
Elastomeric Bearing Assembly Type II	Each	12
Jack and Remove Existing Bearing	Each	12
Furnishing and Erecting Structural Steel	Pounds	2050

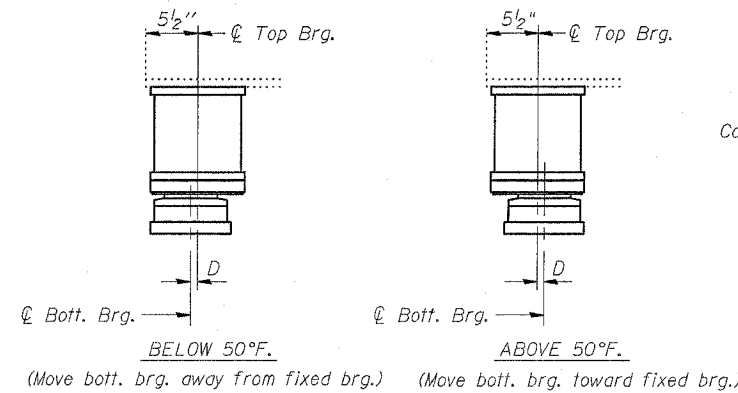
DESIGNED	Victor H. Veliz
CHECKED	
DRAWN	VHV
CHECKED	

EXAMINED	
PASSED	ENGINEER OF STRUCTURAL SERVICES
	ENGINEER OF BRIDGES AND STRUCTURES



SIDE RETAINER

Equivalent rolled angle with stiffeners will be allowed in lieu of welded plates.



SETTING ANCHOR BOLTS AT EXP. BRG.

D = 1/8 inch per each 100' of expansion for every 15° temp. change from the normal temp. of 50°F.

WEST ABUTMENT

SN. 058-0050