

STATE OF ILLINOIS
DEPARTMENT OF TRANSPORTATION

F.A.P. RTE	SECTION	COUNTY	TOTAL SHEETS	SHEET NO.
774	D7 WEED SPRAYING 2023-2	EFFINGHAM	4	1
		ILLINOIS	CONTRACT NO. 74B71	

FOR INDEX OF SHEETS, SEE SHEET NO. 2

AADT = 11,400 (2021)

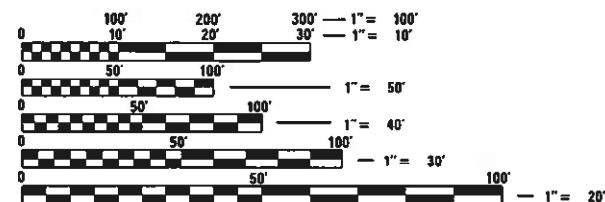
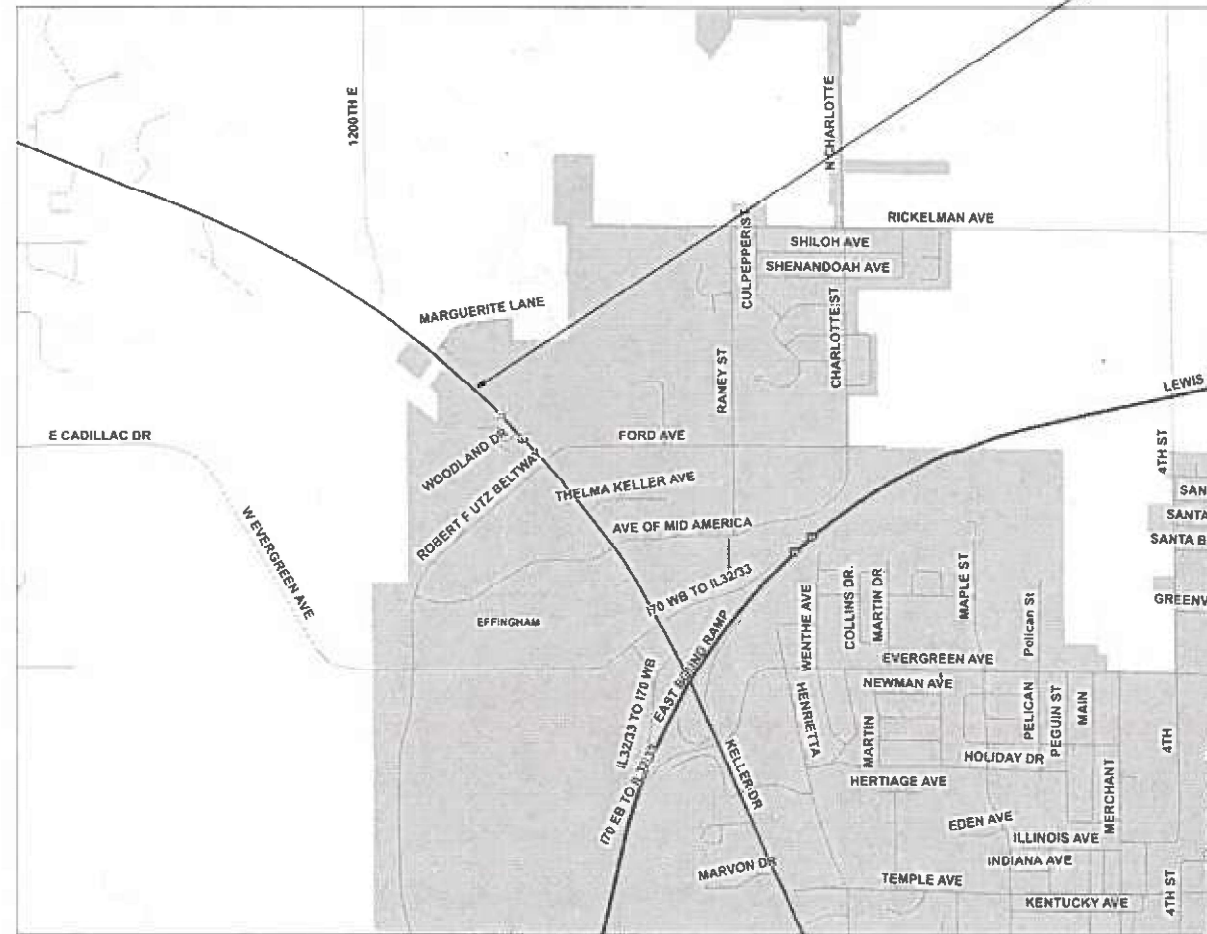
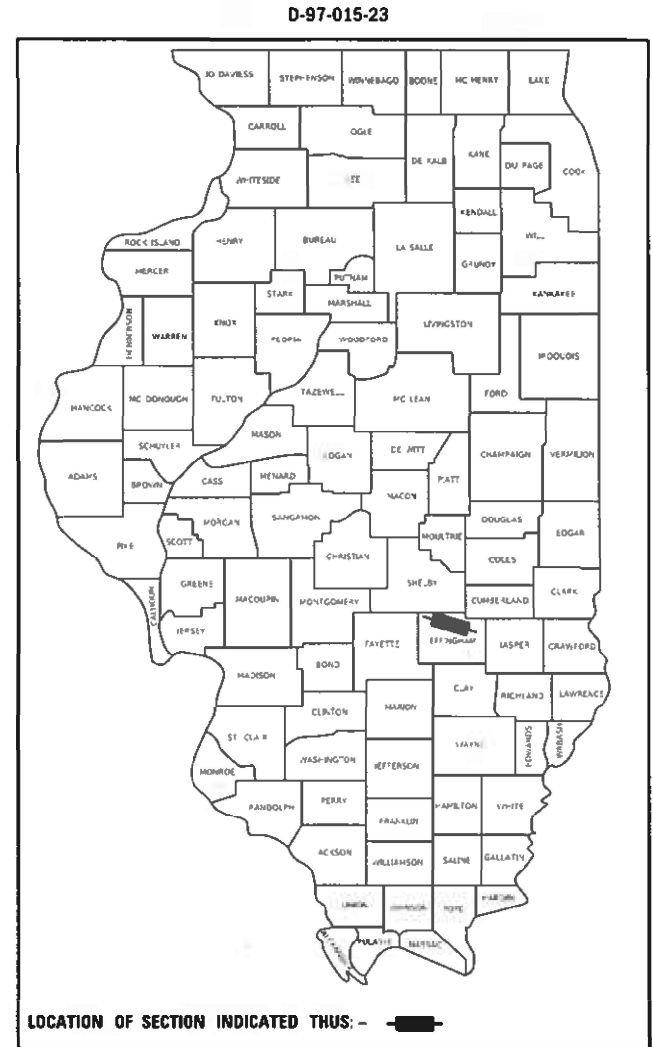
PROPOSED HIGHWAY PLANS

FAP ROUTE 774 (IL 32/33)
D7 WEED SPRAYING 2023-2

WEED CONTROL, LANDSCAPING
EFFINGHAM COUNTY

C-97-015-23

PROJECT LOCATION



FULL SIZE PLANS HAVE BEEN PREPARED USING STANDARD ENGINEERING SCALES. REDUCED SIZED PLANS WILL NOT CONFORM TO STANDARD SCALES. IN MAKING MEASUREMENTS ON REDUCED PLANS, THE ABOVE SCALES MAY BE USED.

J.U.L.I.E.
JOINT UTILITY LOCATION INFORMATION FOR EXCAVATORS
1-800-892-0123
OR 811

PROJECT ENGINEER: DEBRA G. BARRETT
PROJECT MANAGER: DEBRA G. BARRETT

CONTRACT NO. 74B71

GROSS LENGTH = 1,056.00 FT. = 0.2 MILE
NET LENGTH = 1,056.00 FT. = 0.2 MILE

STATE OF ILLINOIS
DEPARTMENT OF TRANSPORTATION

SUBMITTED December 30 2022
Jeffrey P. Myers
REGIONAL ENGINEER

February 3, 2023
Scott A. Etk
ENGINEER OF DESIGN AND ENVIRONMENT

February 3, 2023
Stephen M. Smith
DIRECTOR OF HIGHWAYS PROJECT IMPLEMENTATION

PRINTED BY THE AUTHORITY
OF THE STATE OF ILLINOIS

INDEX OF SHEETS

<u>SHEET NO.</u>	<u>ITEM</u>
1	COVER SHEET
2	INDEX OF SHEETS, LIST OF STANDARDS & SPRAY LIMITS
3	SUMMARY OF QUANTITIES
4	LANDSCAPING PLAN

THE FOLLOWING STANDARDS ARE A PART OF THESE PLANS AND ARE INCLUDED FOLLOWING THE LAST NUMBERED SHEET OF THE PLANS.

<u>STD. NO.</u>	<u>DESCRIPTION</u>
000001-08	STANDARD SYMBOLS, ABBREVIATIONS, AND PATTERNS
001006	DECIMAL OF AN INCH AND OF A FOOT
701101-05	OFF-ROAD OPERATIONS, MULTILANE, 15' TO 24" FROM PAVEMENT EDGE
701106-02	OFF-ROAD OPERATIONS, MULTILANE, MORE THAN 15' AWAY
701701-10	URBAN LANE CLOSURE, MULTILANE INTERSECTION
701901-08	TRAFFIC CONTROL DEVICES

MODEL: D:\draft
 FILE NAME: p:\illinois\k\kender\com\p\midot\documents\dot_offices\dirct_7\Projects\74B71\CADD\DATA\CAD\Drawings\DOT\74B71-SHT-genote.dgn

USER NAME = Mona.Steffen	DESIGNED -	REVISED -	STATE OF ILLINOIS DEPARTMENT OF TRANSPORTATION	INDEX OF SHEETS, HIGHWAY STANDARDS & SPRAY LIMITS	F.A.P. RTE.	SECTION	COUNTY	TOTAL SHEETS	SHEET NO.
PLOT SCALE = 100.0000' / in.	DRAWN -	REVISED -			774	D7 WEED SPRAYING 2023-2	EFFINGHAM	4	2
PLOT DATE = 12/30/2022	CHECKED -	REVISED +			CONTRACT NO. 74B71				
	DATE -	REVISED +			SCALE:	SHEET 1	OF 1	SHEETS	STA.

100% STATE

SUMMARY OF QUANTITIES			TOTAL QUANTITIES	CONSTRUCTION TYPE CODE		
CODE NO	ITEM	UNIT		0031 URBAN		
67100100	MOBILIZATION	L SUM	1	1		
70102635	TRAFFIC CONTROL AND PROTECTION, STANDARD	L SUM	1	1		
	701701					
C2007218	SHRUB, ROSA KNOCKOUT (KNOCKOUT ROSE), 18"	EACH	125	125		
	HEIGHT, CONTAINER					
K0012990	PERENNIAL PLANTS, ORNAMENTAL TYPE, GALLON POT	UNIT	1.19	1.19		
K0013020	PERENNIAL PLANTS, PRAIRIE TYPE, GALLON POT	UNIT	5.15	5.15		
K0029634	WEED CONTROL, PRE-EMERGENT GRANULAR HERBICIDE	POUND	32.6	32.6		
X0100003	CLEARING AND GRUBBING	SQ YD	2623	2623		
X0321501	WEED BARRIER FABRIC	SQ YD	1704	1704		
X0323117	LANDSCAPING GRAVEL	SQ YD	1704	1704		

MODEL: Default
 FILE NAME: p:\ultra-cw-bee-fwy.com\PIV\DOT\Documents\DOT Office\Dir\dir_7\Project\74B71\CADD\DATA\CAD\Sheet\74B71-LP-LS-500.dgn

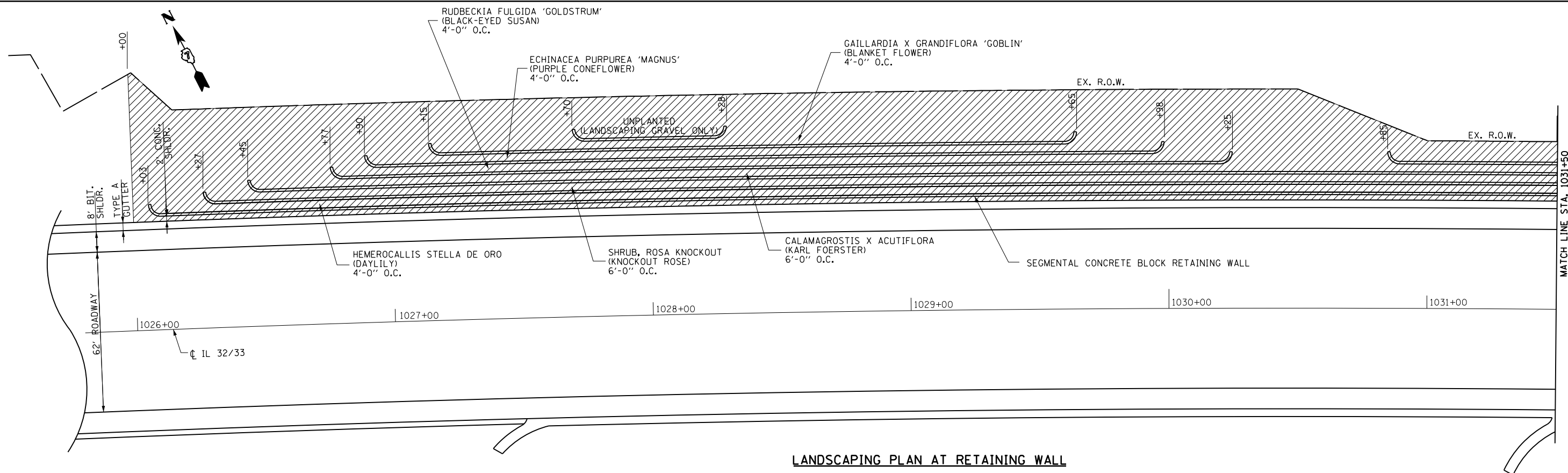
USER NAME = Mona.Steffen	DESIGNED -	REVISED -
	DRAWN -	REVISED -
PLOT SCALE = 100,0000 ' / in.	CHECKED -	REVISED -
PLOT DATE = 12/30/2022	DATE -	REVISED -

**STATE OF ILLINOIS
 DEPARTMENT OF TRANSPORTATION**

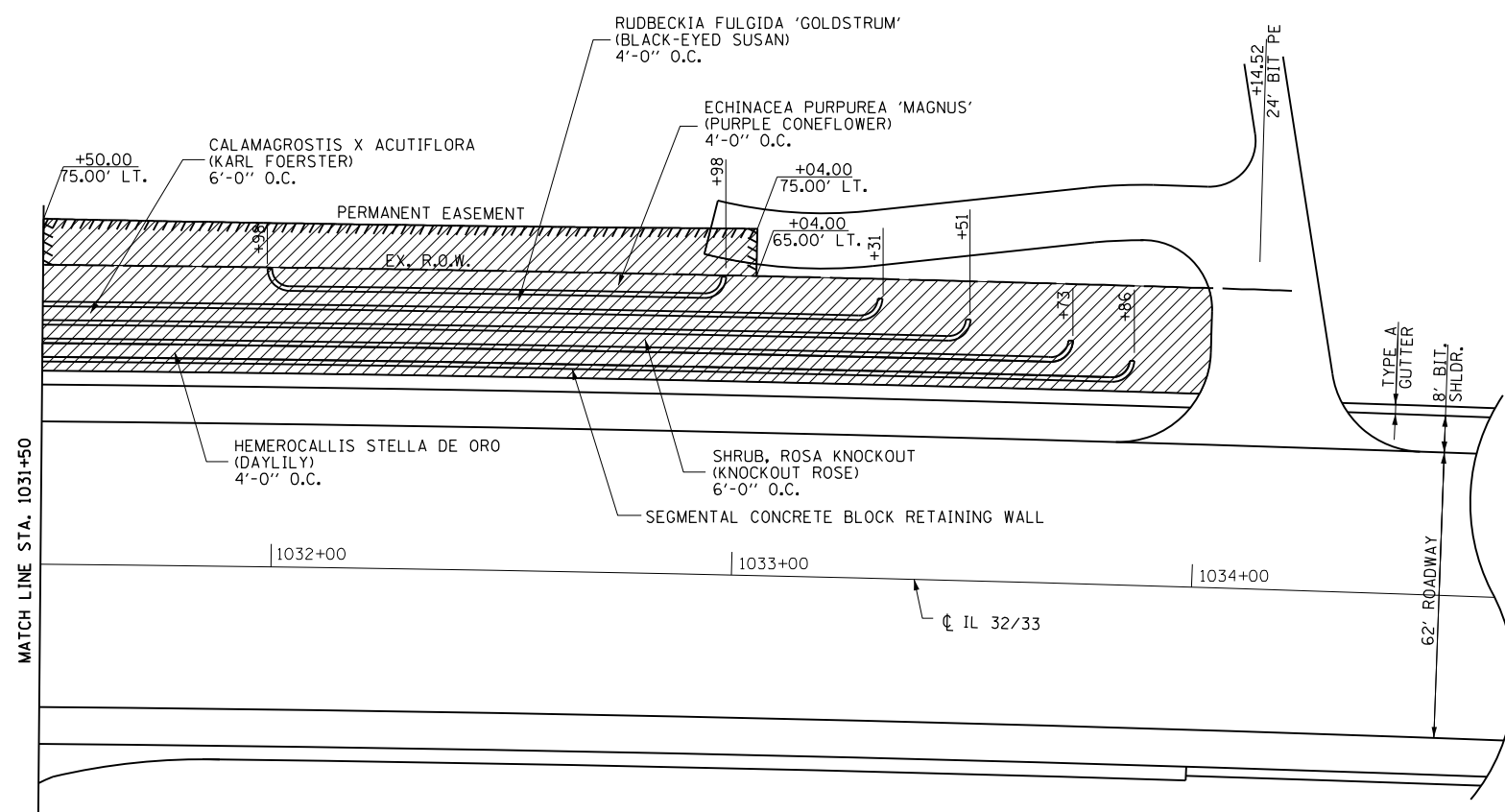
SUMMARY OF QUANTITIES

SCALE: SHEET 1 OF 1 SHEETS STA. TO STA.

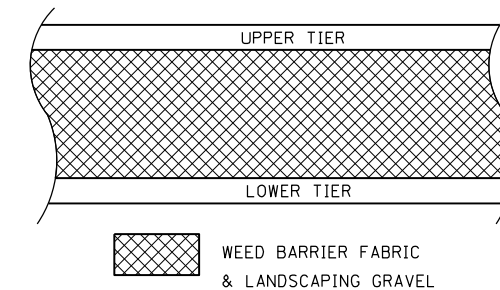
F.A.P. RTE.	SECTION	COUNTY	TOTAL SHEETS	SHEET NO.
774	D7 WEED SPRAYING 2023-2	EFFINGHAM	4	3
ILLINOIS FED. AID PROJECT			CONTRACT NO. 74B71	



LANDSCAPING PLAN AT RETAINING WALL

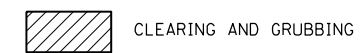


LANDSCAPING PLAN AT RETAINING WALL



LANDSCAPING SCHEDULE AT RETAINING WALL

NAME	UNIT	QUANTITY
SHRUB, ROSA KNOCKOUT (KNOCKOUT ROSE), 18" HEIGHT, CONTAINER	EACH	125
PERENNIAL PLANTS, ORNAMENTAL TYPE, GALLON POT - KARL FOERSTER	UNIT	1.19
PERENNIAL PLANTS, PRAIRIE TYPE, GALLON POT - DAYLILY - BLACK-EYED SUSAN - PURPLE CONEFLOWER - BLANKET FLOWER	UNIT	5.15



MODEL: Default
 FILE NAME: p:\uldrct-aw-beadefy.com\FW\DOT\Documents\DOT\Office\Director_T\Projects\74871\CADD\DATA\CAD\Sheet\74871-1-1-1.dwg
 PLOT DATE = 12/30/2022

USER NAME = Mona.Steffen	DESIGNED -	REVISED -
	DRAWN -	REVISED -
PLOT SCALE = 100,0000' / in.	CHECKED -	REVISED -
	DATE -	REVISED -

STATE OF ILLINOIS
DEPARTMENT OF TRANSPORTATION

LANDSCAPING PLAN

SCALE: SHEET 1 OF 1 SHEETS STA. TO STA.

F.A.P. RTE.	SECTION	COUNTY	TOTAL SHEETS	SHEET NO.
774	D7 WEED SPRAYING 2023-2	EFFINGHAM	4	4
CONTRACT NO. 74871				
ILLINOIS FED. AID PROJECT				