

DESIGN		
INT.	DATE	REASON

PLAN		
SURVEYED	PLOTTED	CHECKED
NOTE BOOK	BY	DATE

CHECKS		
INT.	DATE	REASON

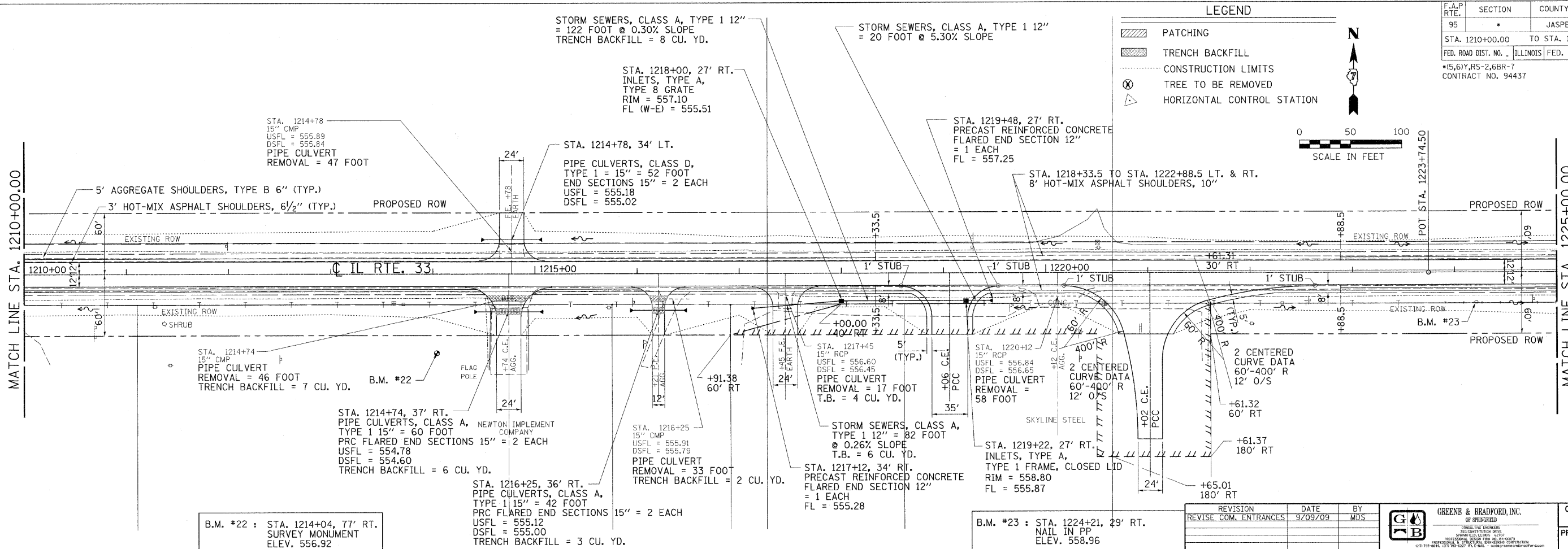
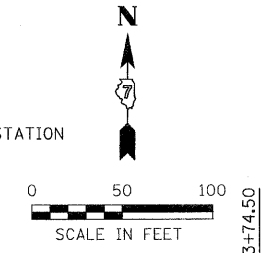
PROFILE		
SURVEYED	PLOTTED	CHECKED
NOTE BOOK	BY	DATE

CHECKS		
INT.	DATE	REASON

F.A.P. RTE.	SECTION	COUNTY	TOTAL SHEETS	SHEET NO.
95	*	JASPER	546	70
STA. 1210+00.00 TO STA. 1225+00.00				
FED. ROAD DIST. NO. ILLINOIS FED. AID PROJECT				
*15,6Y,RS-2,6BR-7				
CONTRACT NO. 94437				

LEGEND

- PATCHING
- TRENCH BACKFILL
- CONSTRUCTION LIMITS
- TREE TO BE REMOVED
- HORIZONTAL CONTROL STATION



B.M. #22 : STA. 1214+04, 77' RT. SURVEY MONUMENT ELEV. 556.92

B.M. #23 : STA. 1224+21, 29' RT. NAIL IN PP ELEV. 558.96

REVISION	DATE	BY
REVISE COM. ENTRANCES	9/09/09	MDS

	GREENE & BRADFORD, INC. OF SPRINGFIELD <small>CONSULTING ENGINEERS PROFESSIONAL SERVICE OFFICE PROFESSIONAL SERVICE OFFICE 1075-4848, 1075-7027 FAX, E-MAIL: g&b@greenebradford.com</small>	COMPUTER FILE NO. PLAN16-2.DGN PROJECT: 01256 2/26/10-FAV
--	---	--

