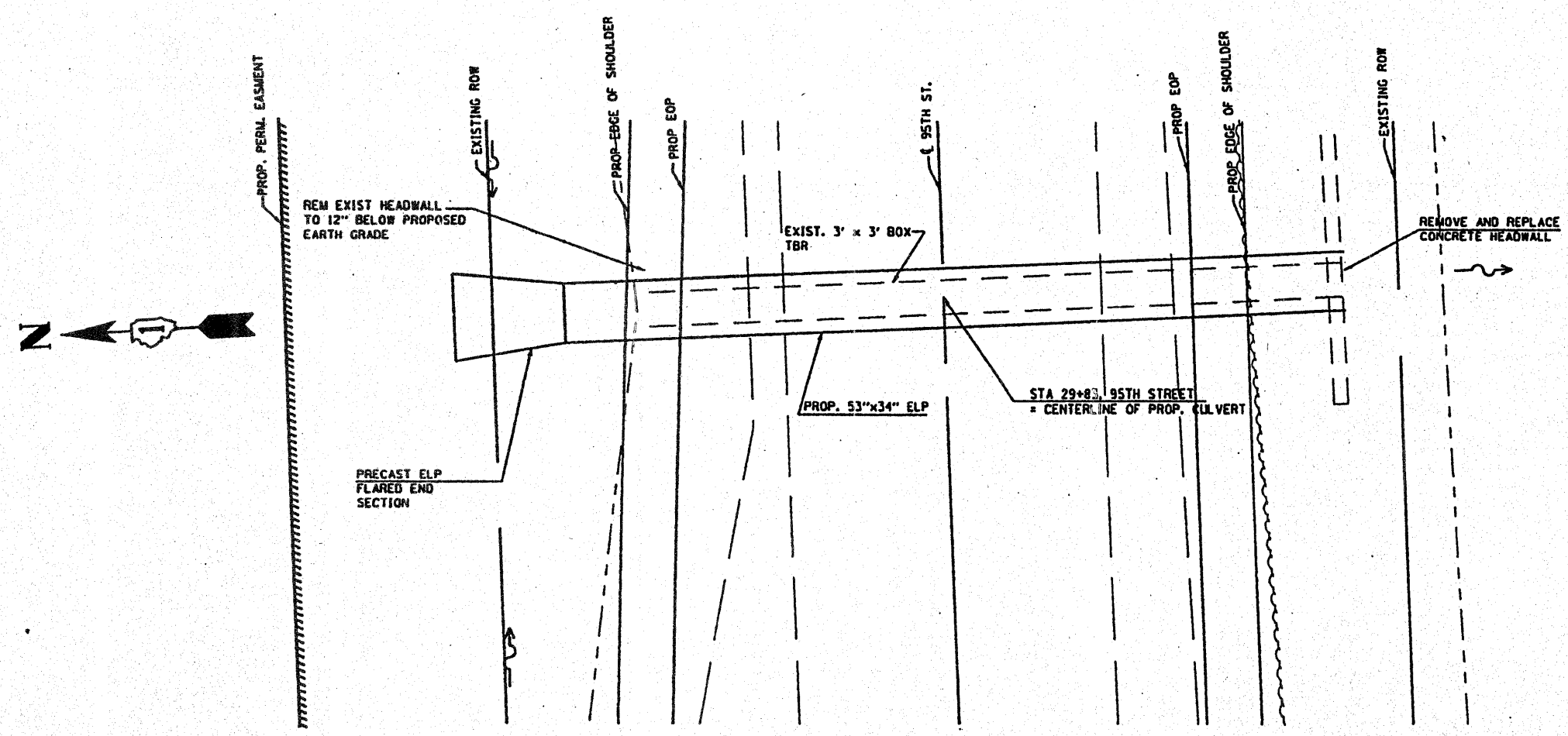


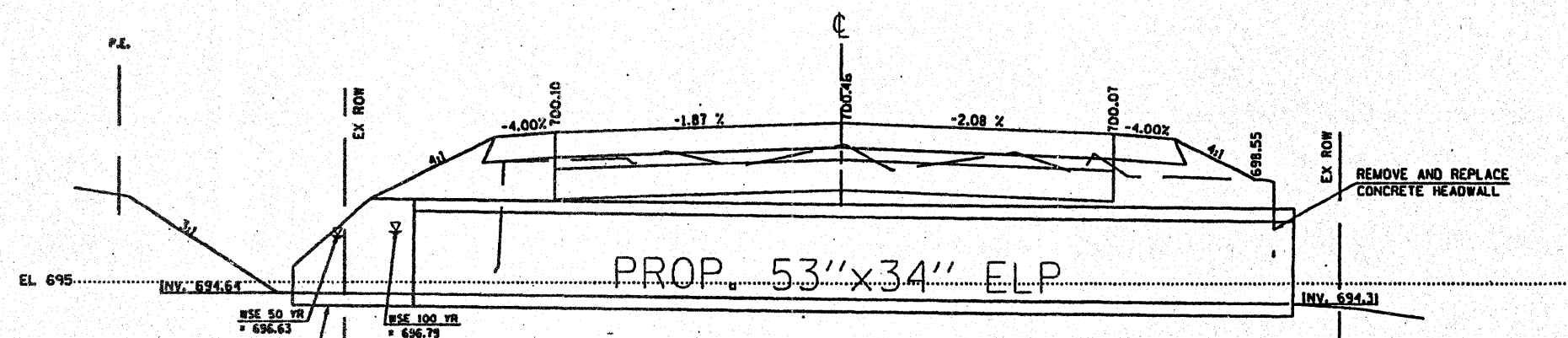
F.A.W. RTE.	SECTION	COUNTY	TOTAL SHEETS	SHEET NO.
1566	29 R-N-1	COOK	120	60
STA.		TO STA.		
FED. ROAD DIST. NO.		ILLINOIS FED. AID PROJECT		

CONTRACT NO.: 62377



PLAN VIEW

95TH ST.



ELEVATION VIEW
LOOKING EAST

EXHIBIT 2-00C

REVISIONS	
NAME	DATE

ILLINOIS DEPARTMENT OF TRANSPORTATION
 MAJOR CULVERT CROSSING
 STATION 29+83
 PROP. 53" x 34" ELLIPTICAL
 CONC. PIPE
 EXHIBIT 2-00c

SCALE: VERT. _____
 HORIZ. _____
 DATE 11/19/2003

DRAWN BY RLH
 CHECKED BY MED