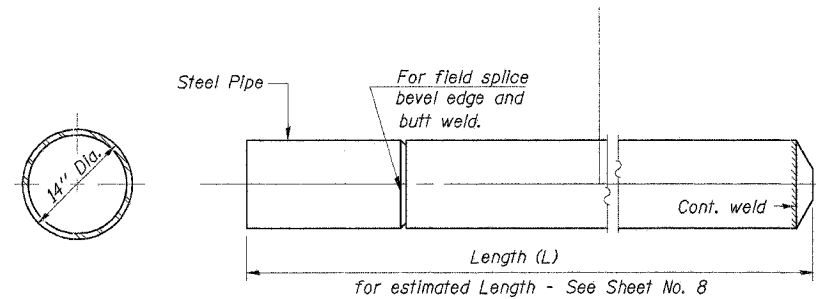


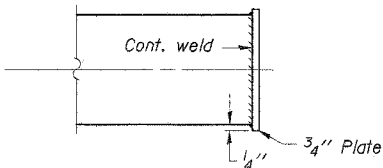
| ROUTE NO. | SECTION | COUNTY | TOTAL SHEETS | SHEET NO. |
|------------|----------------|----------|--------------|-----------|
| T.R. 189 | 01-11127-00-BR | IROQUOIS | 20 | 9 |
| ROAD DIST. | ILLINOIS | DOUGLAS | | |

CONTRACT NO. 87287

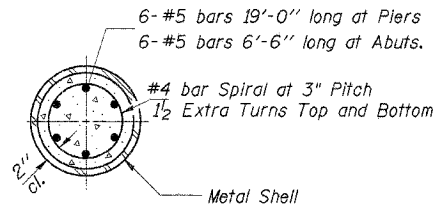
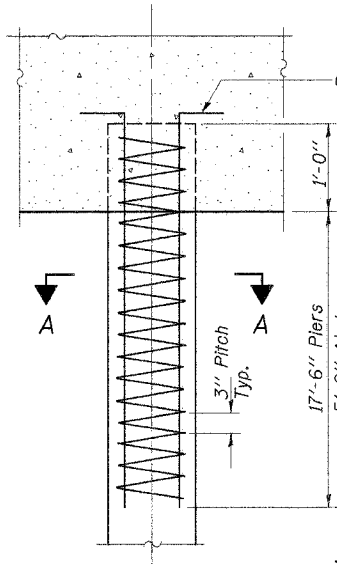
Notes: Driving and bearing ends of pipe shall be cut square.
The thickness of the shell shall be 0.250 inches with a tolerance of 5%. The shell shall be in accordance with ASTM A 252 Grade 3.



DETAIL OF CYLINDRICAL STEEL SHELL
FOR CAST IN PLACE CONCRETE PILES



OPTIONAL FLAT END



SECTION A-A

The cost of Reinforcement & Concrete
is incidental to the cost of
driving piles.

DETAIL OF REINFORCEMENT FOR
METAL SHELLS

DETAIL OF METAL SHELL FOR CAST IN PLACE CONCRETE PILES

| | |
|----------|-----|
| DESIGNED | SFM |
| CHECKED | FJS |
| DRAWN | SAP |
| CHECKED | SFM |

PILE DETAILS
SECTION 01-11127-00-BR
DOUGLAS ROAD DISTRICT
IROQUOIS COUNTY
STA. 15+07

4440 ASH GROVE
SPRINGFIELD, IL 62711
(217) 793-8600
www.fehr-graham.com

FEHR-GRAHAM & ASSOCIATES, LLC
ENGINEERING AND SCIENCE CONSULTANTS
FREEPORT, IL ROCKFORD, IL ROCKFORD, IL SPRINGFIELD, IL

JOB NO.: 46816
FILE: PILE.DGN
DATE: 12/08/06