

STATE OF ILLINOIS DEPARTMENT OF TRANSPORTATION DIVISION OF HIGHWAYS PLANS FOR PROPOSED HIGHWAY BRIDGE PROGRAM

F.A.S. RTE.	SECTION	COUNTY	TOTAL SHEETS	SHEET NO.
342	02-00208-01-BR	LIVINGSTON	24	1
STA. 171+70		TO STA. 174+70		
FED. ROAD DIST. NO. 7		ILLINOIS	FED. AID PROJECT* CONTRACT NO. 87283	

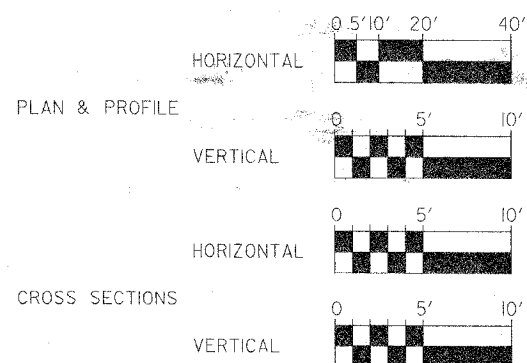
INDEX OF SHEETS

- 1 COVER SHEET
- 2 SUMMARY OF QUANTITIES & SCHEDULE OF QUANTITIES
- 3 TYPICAL SECTIONS
- 4 DETOUR MAPS
- 5 PLAN & PROFILE
- 6-21 BRIDGE STRUCTURE NO. 053-3454
- 22-24 CROSS SECTIONS

STATE STANDARD DETAILS

- 000001-04 702001-06
- 515001-02 780001-01
- 630301-04 B.L.R. 21-6
- 631026-03 B.L.R. 22-4
- 635006-02

SCALES



UTILITIES

POWER - EASTERN ILLINELECTRIC COOPERATIVE
 TELEPHONE - VERIZON
 GAS - PEOPLE'S GAS LIGHT & COKE COMPANY
 CRUDE OIL PIPELINE - EXXONMOBIL PIPELINE COMPANY

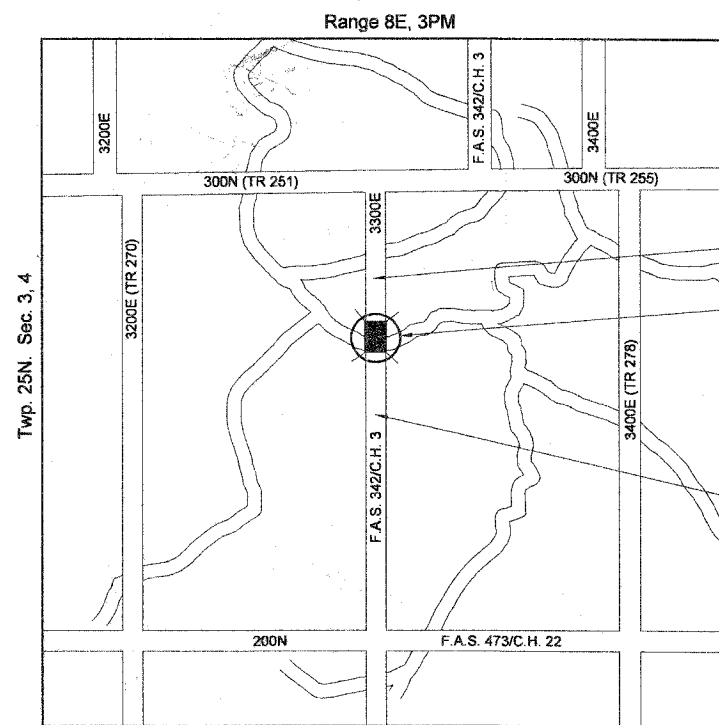
J.U.L.I.E. SYSTEM - THE TOLL FREE TELEPHONE
 NUMBER FOR JOINT UTILITY LOCATING INFORMATION
 FOR EXCAVATOR IS 1-800-892-0123.

BENCHMARKS:

- 1.) EXISTING "□", ON THE N.E. CORNER OF EAST BRIDGE RAIL ELEVATION = 81.12
- 2.) IRON ROD, CP #14 ±1200' S. OF BRIDGE ON E. SIDE OF ROAD
 N 8807.79, E 10018.98 ELEVATION = 77.55
- 3.) IRON ROD, CP #17 S.E. QUADRANT TOB STA. 173+23/46' RT
 N 9992.61, E 10046.26 ELEVATION = 73.76

JOB NO. C-93-101-04
 CONTRACT NO.: 87283
 CONSTRUCTION TYPE CODE: ROADWAY 1000
 BRIDGE X020

LIVINGSTON COUNTY SECTION 02-00208-01-BR F.A.S. ROUTE 342/C.H. 3 FEDERAL PROJECT BRS-342(106)



IMPROVEMENT ENDS
STA. 174+70

PROPOSED STRUCTURE NO: 053-3454
 THE PROPOSED BRIDGE SUPERSTRUCTURE
 IS A THREE-SPAN CAST-IN-PLACE CONCRETE
 DECK. THE SUBSTRUCTURE CONSIST OF
 SPILL-THRU ABUTMENTS ON PILES AND PIERS
 BUILT FROM DRIVING PILES. THE BRIDGE IS
 SKEWED 20 DEGREES RIGHT FORWARD. THE
 STRUCTURE IS 30'-0" OUT TO OUT AND 100'-0"
 BACK TO BACK OF ABUTMENTS.

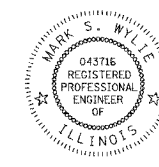
IMPROVEMENT BEGINS
STA. 171+70

FUNCTIONAL CLASSIFICATION: MAJOR COLLECTOR (NON-URBAN)
 DESIGN SPEED: 55 M.P.H.
 DESIGN TRAFFIC: 374 (2023)
 % TRUCKS: 5.0%

LOCATION MAP

F.A.S. 342/C.H. 3 GROSS LENGTH OF PROJECT = 300.00 FT = 0.057 MILE; NET LENGTH OF PROJECT = 300.00 FT = 0.057 MILE
 TOTAL GROSS LENGTH OF PROJECT = 300.00 FT = 0.057 MILE; NET LENGTH OF PROJECT = 300.00 FT = 0.057 MILE

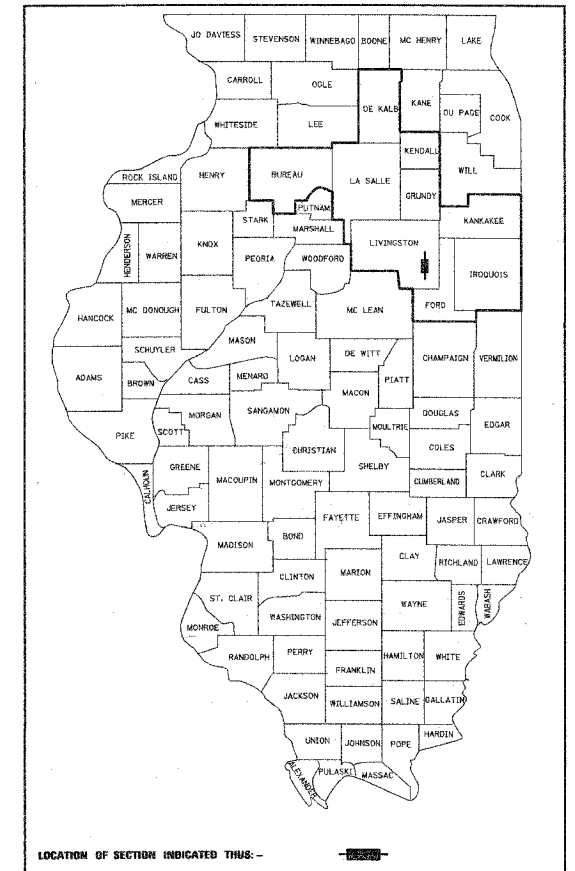
Farnsworth GROUP
 2709 McGraw Drive
 Bloomington, Illinois 61704
 309/663-8435, 309/663-1571 fax



Mark S. Wylie Date 12/11/06
 MARK S. WYLIE
 ILLINOIS PROFESSIONAL ENGINEER
 NO. 062-043716
 EXPIRATION 11/30/07

DATE: 12/01/06

C - 93-101-04



APPROVED	<i>12/11/06</i>	20 06
	<i>Walt Wilk</i>	COUNTY ENGINEER
PASSED	DEC. 21	20 06
	<i>Ken Jung</i>	DISTRICT ENGINEER OF LOCAL ROADS & STREETS
APPROVED	DEC 21	20 06
	<i>Dave DeLuca</i>	DEPUTY DIRECTOR OF HIGHWAYS, REGION ENGINEER

**STATE OF ILLINOIS
DEPARTMENT OF TRANSPORTATION**