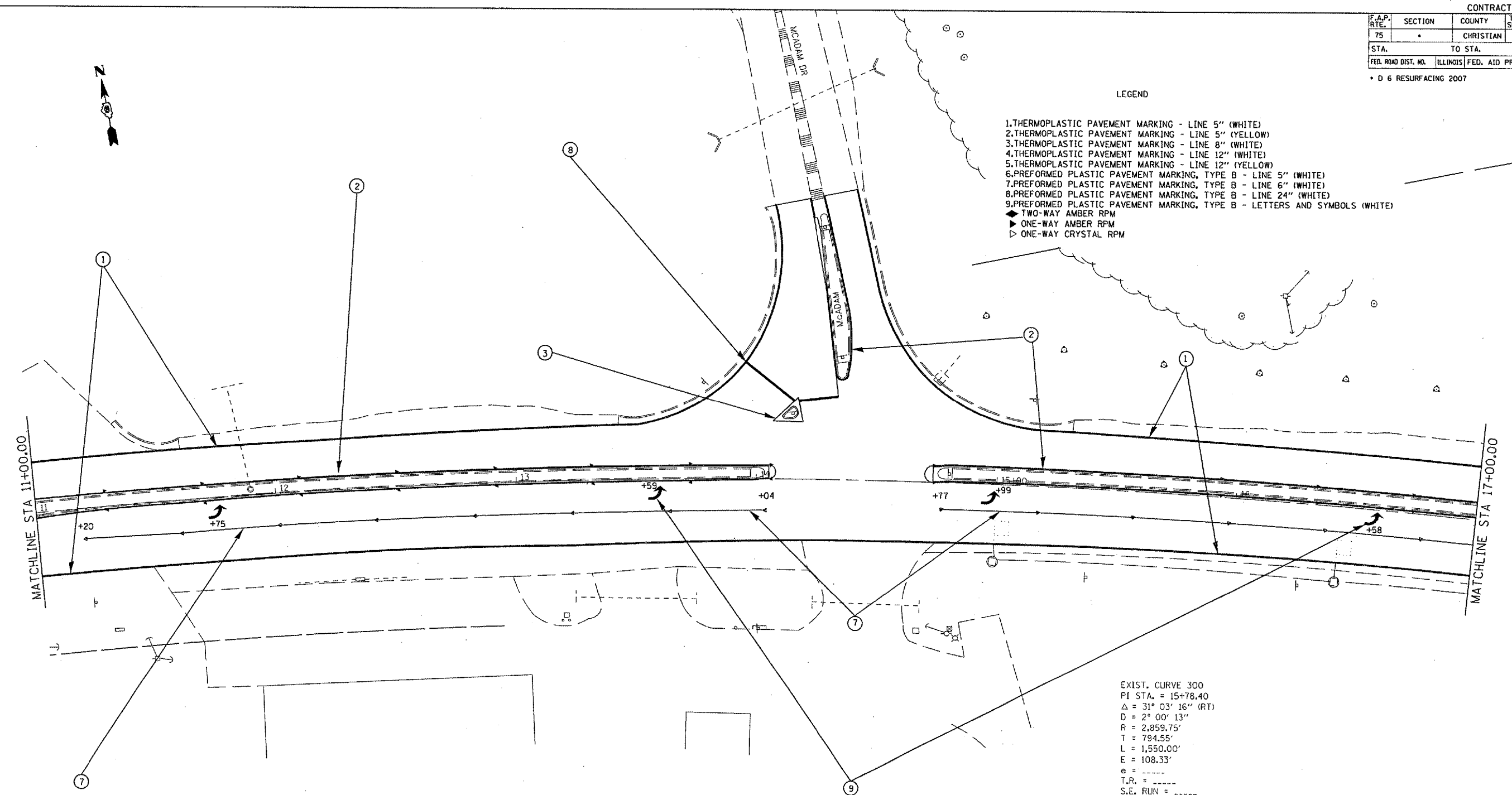


CONTRACT NO. 72826				
F.A.P. RTE.	SECTION	COUNTY	TOTAL SHEETS	SHEET NO.
75		CHRISTIAN	97	60
STA.		TO STA.		
FED. ROAD DIST. NO.		ILLINOIS FED. AID PROJECT		

• D 6 RESURFACING 2007

LEGEND

- 1.THERMOPLASTIC PAVEMENT MARKING - LINE 5" (WHITE)
- 2.THERMOPLASTIC PAVEMENT MARKING - LINE 5" (YELLOW)
- 3.THERMOPLASTIC PAVEMENT MARKING - LINE 8" (WHITE)
- 4.THERMOPLASTIC PAVEMENT MARKING - LINE 12" (WHITE)
- 5.THERMOPLASTIC PAVEMENT MARKING - LINE 12" (YELLOW)
- 6.PREFORMED PLASTIC PAVEMENT MARKING, TYPE B - LINE 5" (WHITE)
- 7.PREFORMED PLASTIC PAVEMENT MARKING, TYPE B - LINE 6" (WHITE)
- 8.PREFORMED PLASTIC PAVEMENT MARKING, TYPE B - LINE 24" (WHITE)
- 9.PREFORMED PLASTIC PAVEMENT MARKING, TYPE B - LETTERS AND SYMBOLS (WHITE)
- ▶ TWO-WAY AMBER RPM
- ▶ ONE-WAY AMBER RPM
- ▷ ONE-WAY CRYSTAL RPM



EXIST. CURVE 300  
 PI STA. = 15+78.40  
 $\Delta = 31^\circ 03' 16''$  (RT)  
 $D = 2^\circ 00' 13''$   
 $R = 2,859.75'$   
 $L = 794.55'$   
 $E = 1,550.00'$   
 $e =$   
 $T.R. =$   
 $S.E. RUN =$   
 $P.C. STA. = 7+83.85$   
 $P.T. STA. = 23+33.85$

DATE: 2/21/2007  
 FILE NAME: \\sfs\6803\28\p1.mxd  
 PLOT SCALE: 42.5291 / IN.  
 USER NAME: laughlin-1

Rev. Sheet 2-22-07

REVISIONS	
NAME	DATE

ILLINOIS DEPARTMENT OF TRANSPORTATION  
 PAVEMENT MARKING PLAN  
 FAP 75 (IL 29)  
 SECTION D 6 RESURFACING 2007  
 CHRISTIAN COUNTY

SCALE: VERT. \_\_\_\_\_  
 HORIZ. \_\_\_\_\_  
 DATE \_\_\_\_\_  
 DRAWN BY \_\_\_\_\_  
 CHECKED BY \_\_\_\_\_