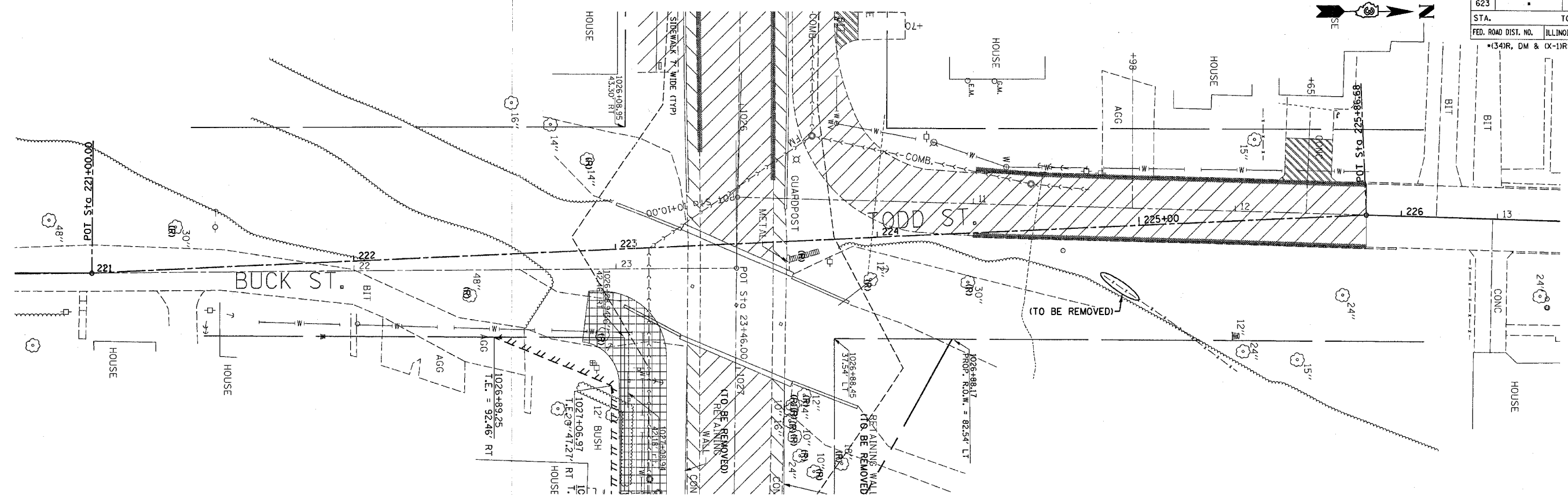
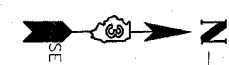



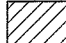

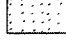
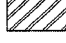

F.A.P. RTE.	SECTION	COUNTY	TOTAL SHEETS	SHEET NO.
623		LASALLE	126	47

STA.	TO STA.

FED. ROAD DIST. NO. ILLINOIS FED. AID PROJECT
 * (34)R, DM & (X-1)RS, & BR



LEGEND

-  PAVEMENT REMOVAL
-  SIDEWALK REMOVAL
-  CURB/C&G REMOVAL
-  SURFACE REMOVAL (SEE NOTE)
-  DRIVEWAY PAVEMENT REMOVAL
-  SERVICE DRIVE REMOVAL

NOTES:
 STA. 1019+50 TO STA. 1022+00 - HMA SURF REM 2 1/2"
 STA. 1022+00 TO STA. 1022+95 & STA. 1029+89.5 TO STA. 1034+84.72 -
 HMA SURF REM (VAR. DEPTH)
 HMA SURF REM (VD) NEEDED AT LOCATIONS TO OBTAIN A
 MINIMUM OF 2 1/2" HMA OVERLAY IN LOCATIONS AS
 DIRECTED BY THE ENGINEER. SEE SPECIAL PROVISIONS.
 STA. 1038+36.72 TO STA. 1038+97 - PCC SURF REM - BUTT JOINT

12/18/2006 9:49:14 AM
 c:\projects\ep01701\sheet3.dgn