

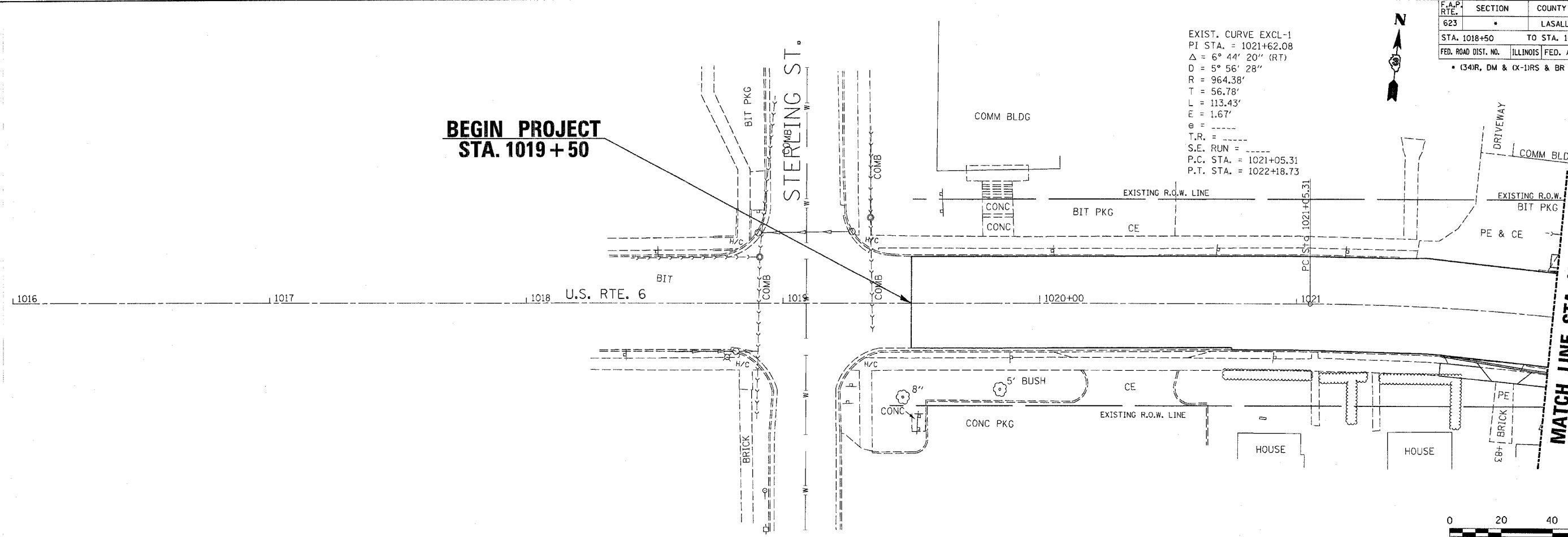
F.A.P. RTE.	SECTION	COUNTY	TOTAL SHEETS	SHEET NO.
623	*	LASALLE	126	19
STA. 1018+50		TO STA. 1022+00		
FED. ROAD DIST. NO.		ILLINOIS FED. AID PROJECT		
* (34)R, DM & (X-1)RS & BR				

EXIST. CURVE EXCL-1  
 PI STA. = 1021+62.08  
 $\Delta = 6^{\circ} 44' 20''$  (RT)  
 $D = 5^{\circ} 56' 28''$   
 $R = 964.38'$   
 $T = 56.78'$   
 $L = 113.43'$   
 $E = 1.67'$   
 $e =$   
 $T.R. =$   
 $S.E. RUN =$   
 $P.C. STA. = 1021+05.31$   
 $P.T. STA. = 1022+18.73$

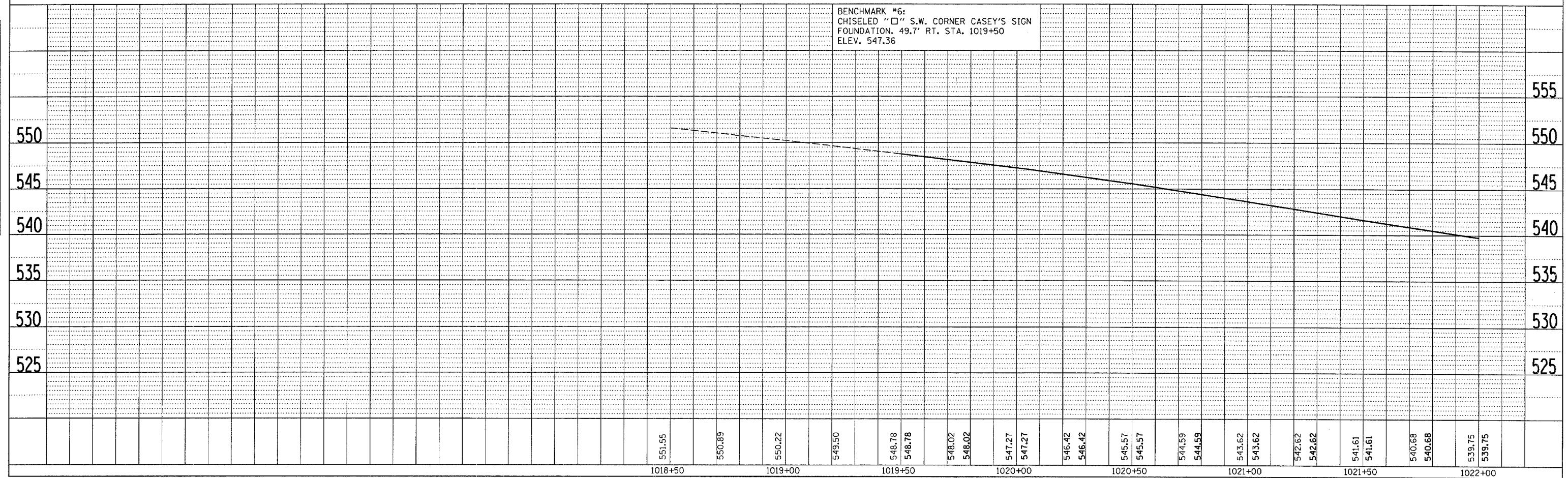


**BEGIN PROJECT  
 STA. 1019 + 50**

**MATCH LINE STA. 1022 + 00**



BENCHMARK #6:  
 CHISELED "□" S.W. CORNER CASEY'S SIGN  
 FOUNDATION. 49.7' RT. STA. 1019+50  
 ELEV. 547.36



551.55	550.89	550.22	549.50	548.78	548.78	548.02	548.02	547.27	547.27	546.42	546.42	545.57	545.57	544.59	544.59	543.62	543.62	542.62	542.62	541.61	541.61	540.68	540.68	539.75	539.75
1018+50		1019+00		1019+50		1020+00		1020+50		1021+00		1021+50		1022+00											

**STA. 1016 + 00 TO STA. 1022 + 00  
 PLAN & PROFILE**

PLAN

DATE	BY

SURVEYED  
 ALIGNED  
 CHECKED  
 RT. OF WAY CHECKED  
 FILE NAME

PROFILE

DATE	BY

SURVEYED  
 GRADES CHECKED  
 CHECKED  
 STAKE SET  
 NOTATIONS OK'D

June 20, 2006  
 \ep01701\consu\17\p&psht.s.dgn