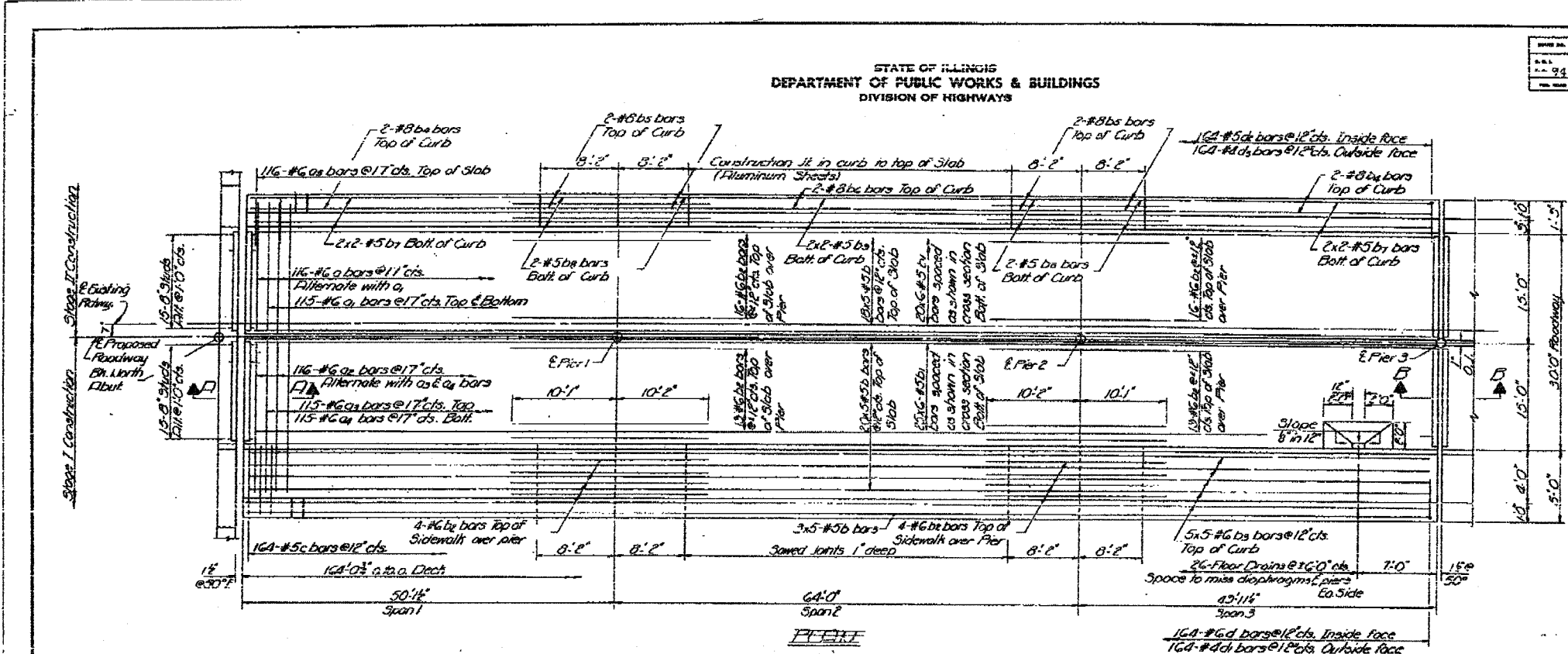


F.A.P. RTE.	SECTION	COUNTY	TOTAL SHEETS	SHEET NO.
698	1VBR	BUREAU	72	52
STA.	TO STA.			
FED. ROAD DIST. NO.	ILLINOIS	FED. AID PROJECT		

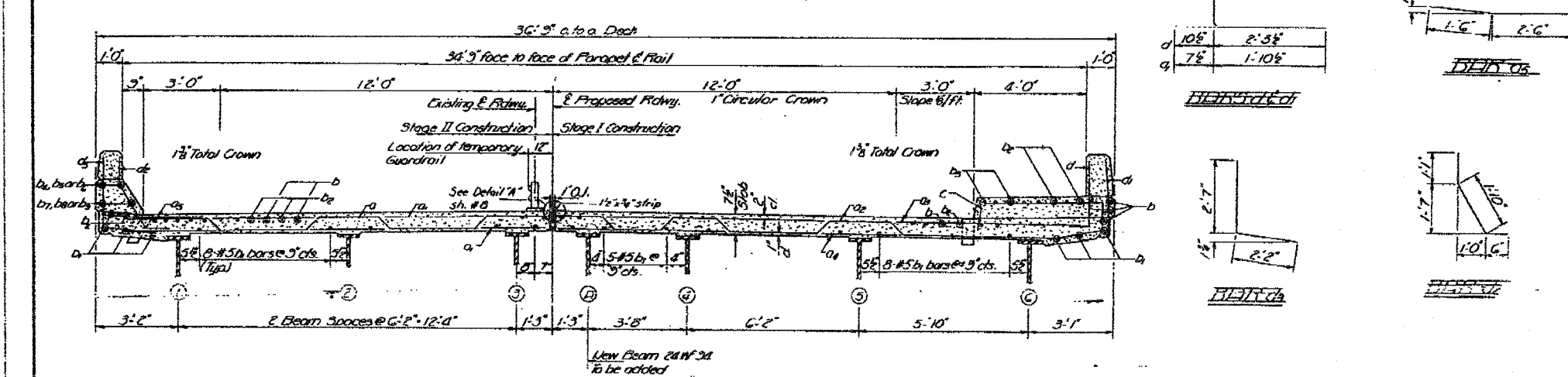
STATE OF ILLINOIS
DEPARTMENT OF PUBLIC WORKS & BUILDINGS
DIVISION OF HIGHWAYS

DESIGNED	BY	DATE	BY	DATE
1-10-94	1-VBR	BUREAU	35	30

SHEET NO. 5
13 SHEETS



Note: For bars & thru chs See Sheets 05E For Sec. AA & BB See Sheet 0.

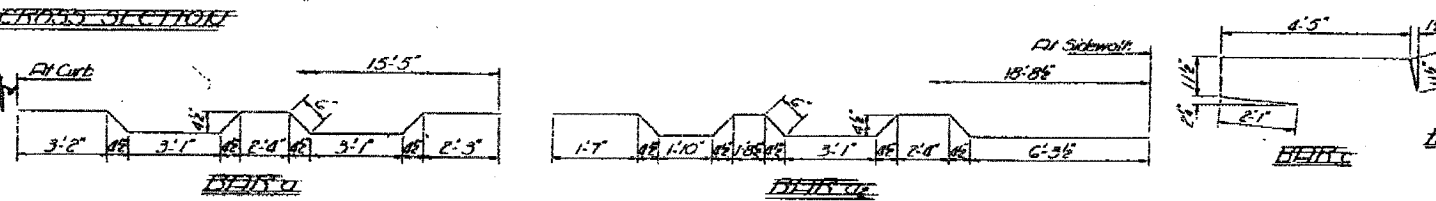


BILL OF MATERIALS

Bar	No.	Size	Length	Shape
a	116	#6	13'-11"	~
a1	290	#6	15'-6"	~
a2	116	#6	13'-4"	~
a3	115	#6	13'-3"	~
a4	115	#6	13'-5"	~
a5	116	#6	8'-0"	~
b	205	#5	34'-0"	~
b1	270	#5	28'-9"	~
b2	78	#6	20'-3"	~
b3	85	#6	30'-3"	~
b4	4	#8	41'-9"	~
b5	8	#8	7'-11"	~
b6	2	#8	47'-9"	~
b7	8	#5	21'-6"	~
b8	8	#5	7'-11"	~
b9	4	#5	24'-4"	~
c	164	#5	8'-5"	~
d	164	#6	3'-4"	~
d1	164	#4	2'-6"	~
d2	164	#5	3'-5"	~
d3	164	#8	4'-5"	~
Reinforcement Bars		Lbs.	42,640	
Structural Steel		Lbs.	28,450	
Class X Concrete		Cu Yds.	176.1	
Stud Shear Connectors		Each	2121	

DESIGNED: A. J. Whittington
 CHECKED: P. A. L.
 DRAWN: J. J. Downing
 CHECKED: N. M.

EXAMINED: [Signature]
 PASSED: [Signature]
 APPROVED: [Signature]



3-SPECIALTY
 SUPERSTRUCTURE
 1515 N. W. 10th St.
 BURLINGTON, ILLINOIS
 612-341-1111

1/15/2006
 c:\p\pro\bars\94066802\1\forshits.dgn