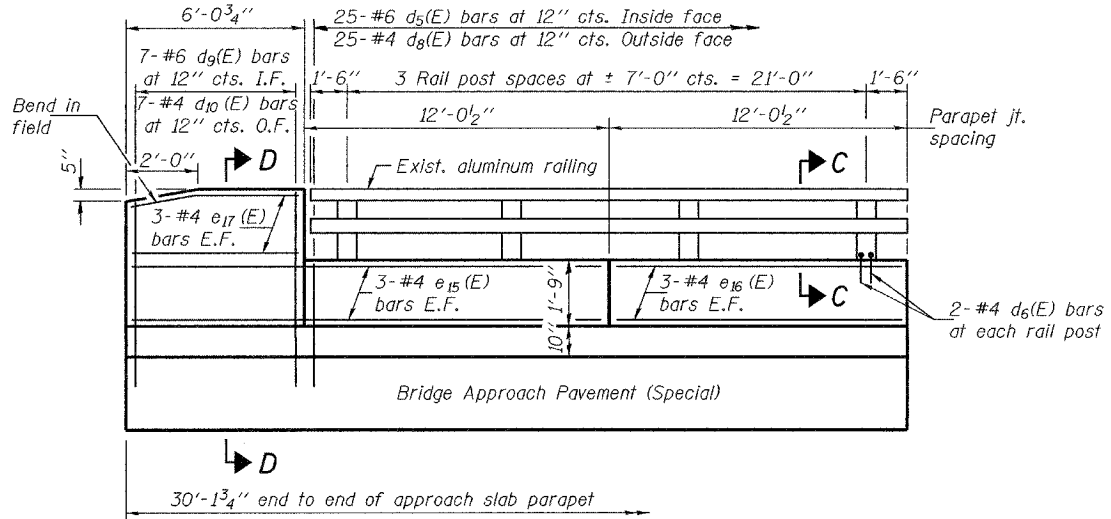


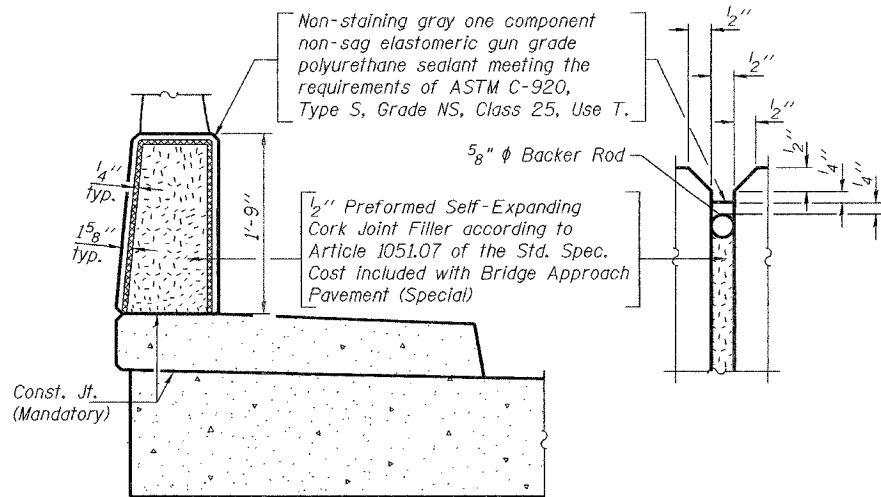
STATE OF ILLINOIS
DEPARTMENT OF TRANSPORTATION

ROUTE NO.	SECTION	COUNTY	SHEET NO.	SHEET	SHEET NO. 12
F.A.P. 698	IVBR	BUREAU	72	39	24 SHEETS
FED. ROAD DIST. NO. 7	ILL. DIST. NO.	FED. AID PROJECT			

Contract No. 66361



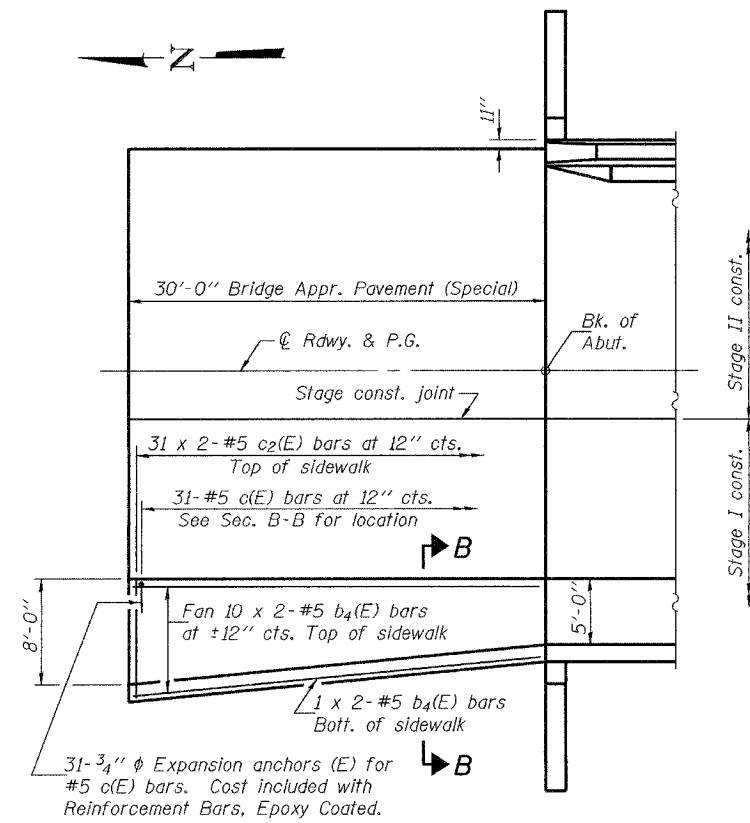
NORTHWEST APPROACH PARAPET ELEVATION
(Looking West - Southwest parapet similar)



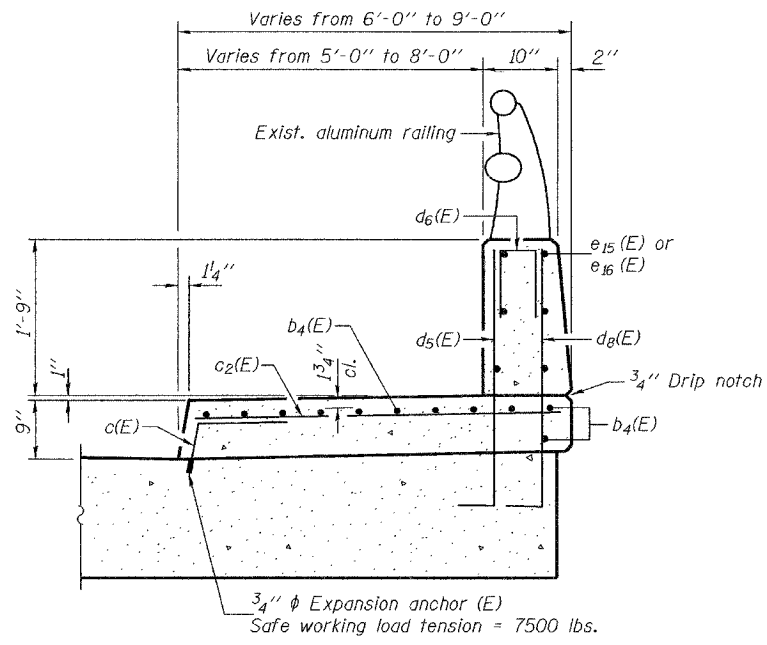
PARAPET JOINT DETAILS

MIN. BAR LAP
#5 bar = 2'-2"

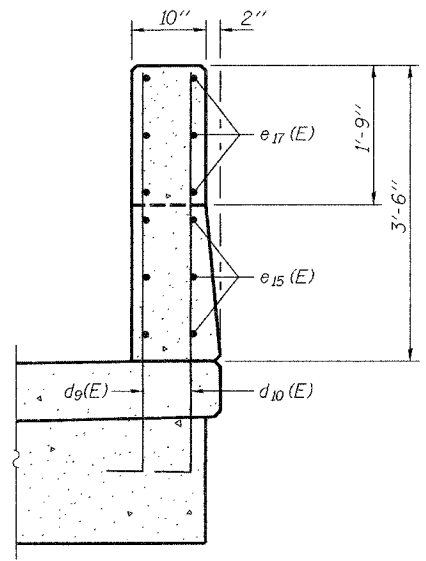
Notes: *Concrete Superstructure on this sheet includes parapet and sidewalk only.
**Cost of Concrete Superstructure and reinforcement bars on this sheet included with Bridge Approach Pavement (Special). Quantities are shown for information only.
For quantity of Bridge Approach Pavement (Special), see roadway plans.
For additional approach pavement details, see roadway plans. See sheet 22 of 24 for bar splicer details.
Bars indicated thus 10 x 2-#5 etc. indicates 10 lines with 2 lengths per line.
The aluminum railing for the proposed structure is to be reused from the existing structure. See sheet 11 of 24 for railing details and notes.
See sheet 11 of 24 for Section C-C and additional notes. Space reinforcement to miss anchor rods.



PLAN - NORTH APPROACH
(South Appr. similar)



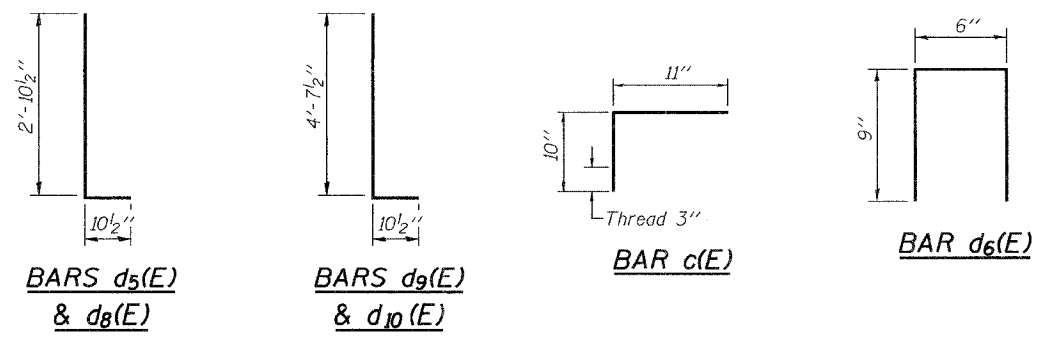
SECTION B-B



SECTION D-D

****PARAPETS & SIDEWALK OF TWO APPROACH PAVEMENTS
BILL OF MATERIAL**

Bar	No.	Size	Length	Shape
b4(E)	44	#5	16'-0"	—
c(E)	62	#5	1'-9"	┐
c2(E)	124	#5	5'-5"	—
d5(E)	50	#6	3'-9"	┐
d6(E)	16	#4	2'-0"	┐
d8(E)	50	#4	3'-9"	┐
d9(E)	14	#6	5'-6"	┐
d10(E)	14	#4	5'-6"	┐
e15(E)	12	#4	17'-10"	—
e16(E)	12	#4	11'-9"	—
e17(E)	12	#4	5'-9"	—
Concrete Superstructure			Cu. Yd.	16.0
Reinforcement Bars, Epoxy Coated			Pound	2430



**BRIDGE APPROACH
PAVEMENT (SPECIAL) PARAPET DETAILS**
F.A.P. RTE. 698 - SECTION IVBR
BUREAU COUNTY
STATION 32+32.00
STRUCTURE NO. 006-0164

DESIGNED	RLT	Jan 9, 2007
CHECKED	PEC	Thomas J. Domagala ENGINEER OF BRIDGE DESIGN
DRAWN	h.t. duong	Ralph E. Anderson ENGINEER OF BRIDGES AND STRUCTURES
CHECKED	RLT/PEC	