

STATE OF ILLINOIS
DEPARTMENT OF TRANSPORTATION

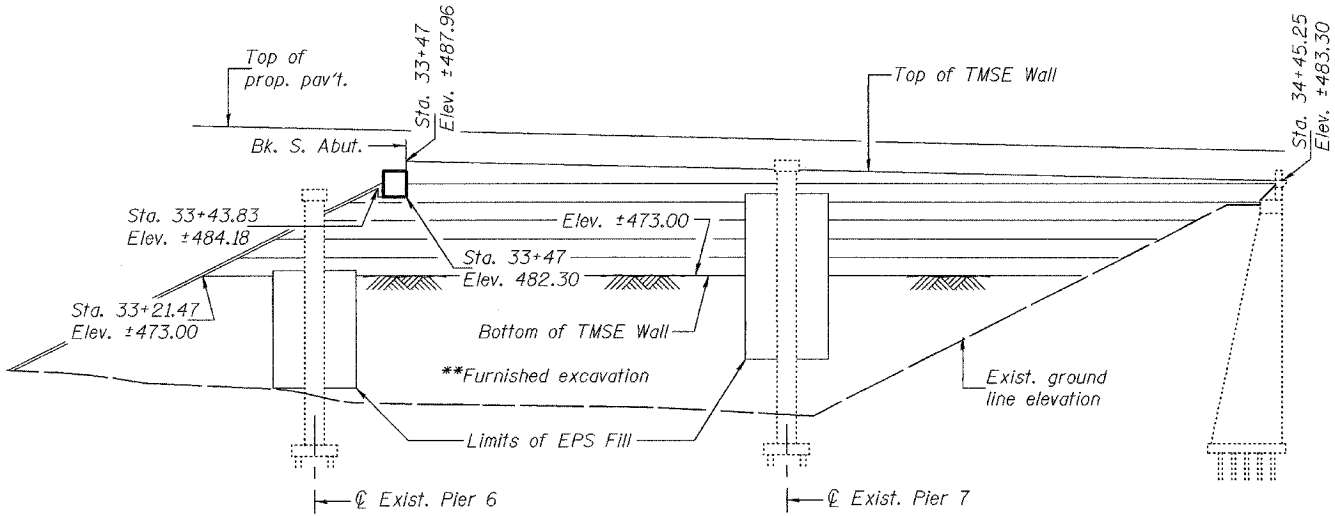
ROUTE NO.	SECTION	COUNTY	TOTAL SHEETS	SHEET NO.
F.A.P. 698	IVBR	BUREAU	72	31
ILLINOIS FED. AID PROJECT-				

Contract No. 66361

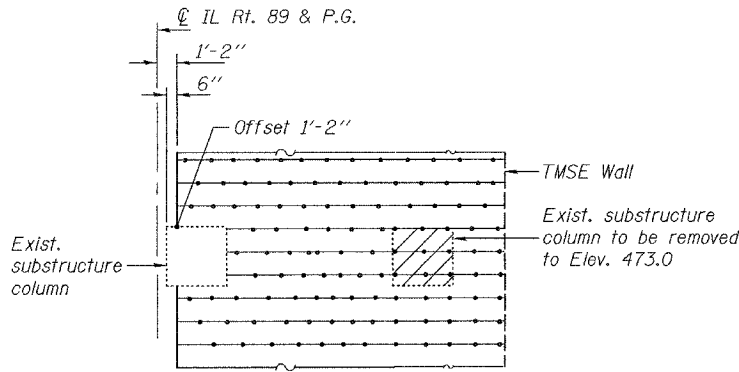
SHEET NO. 4
24 SHEETS

**CONSTRUCTION SEQUENCE FOR SOUTH TMSE
AND EPS FILL AT EXISTING PIER 6**

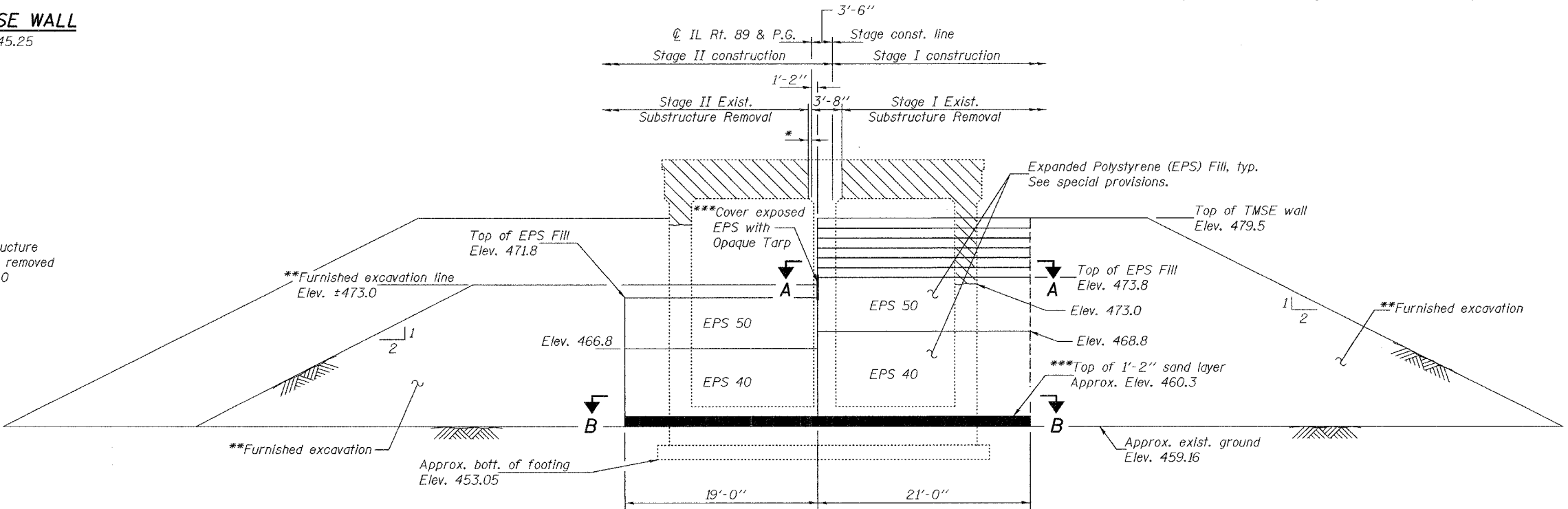
1. Remove Stage I portion of existing Pier 6 cap and column to Elev. 473.0
2. Place 1'-2" of sand to Elev. 460.3 for the Stage I and Stage II EPS fill to the limits shown in the existing Pier 6 Section B-B.
3. Install EPS fill for Stage I and Stage II to Elev. 462.8.
4. Place Furnished Excavation on Stage I and II after each EPS fill installation in such a way that the EPS fill is effectively surrounded by the Furnished Excavation.
5. Continue simultaneous installation of EPS fill and placement of Furnished Excavation for Stage I to Elev. 473.8 and on Stage II to Elev. 471.8
6. Simultaneously build TMSE wall and placement of the Furnished Excavation on Stage I to Elev. 479.5 and complete Stage I construction.
7. For Stage II construction, the Furnished Excavation shall be placed to the required elevation on the Stage II Foundation and proceed with the Stage II construction as required.



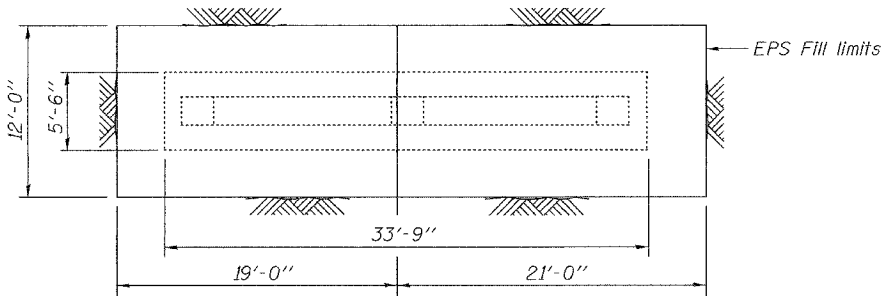
ELEVATION - SOUTH MSE WALL
Sta. 33+21.47 to Sta. 34+45.25



SECTION A-A



SECTION AT EXISTING PIER 6
(Looking south)



SECTION B-B

Notes: Hatched areas indicate removal of existing structures.
*Stage II Removal Line for Existing Substructure to be determined by contractor so as not to disturb wall or pavement integrity.
**For Furnished Excavation details and quantities, see roadway plans.
***Cost included with Expanded Polystyrene Fill. See special provisions.

DESIGNED	RLT
CHECKED	PEC
DRAWN	h.t. duong
CHECKED	RLT/PEC

Jan 9, 2007
EXAMINED *Thomas J. Damagala*
PASSED *Ralph E. Anderson*
ENGINEER OF BRIDGES AND STRUCTURES

SOUTH TMSE WALL DETAILS
F.A.P. RTE. 698 - SECTION IVBR
BUREAU COUNTY
STATION 32+32.00
STRUCTURE NO. 006-0164