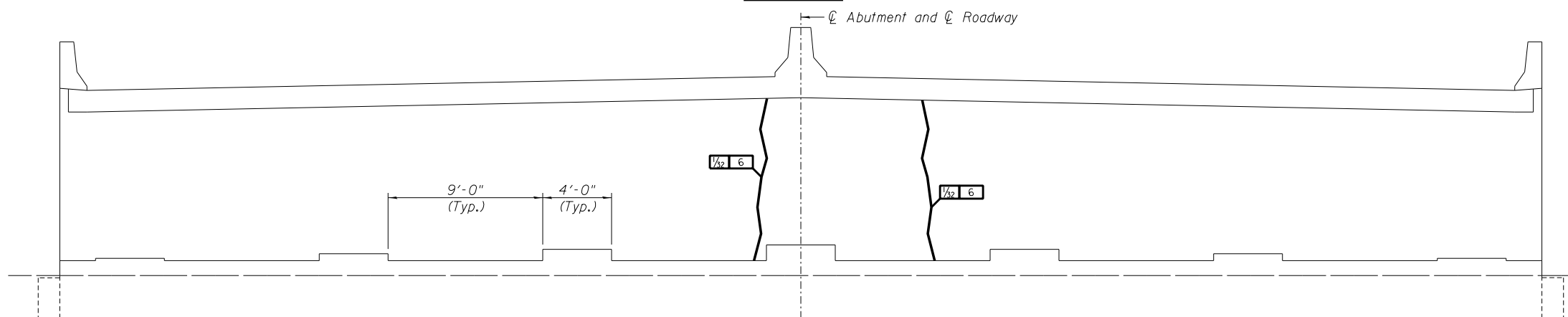
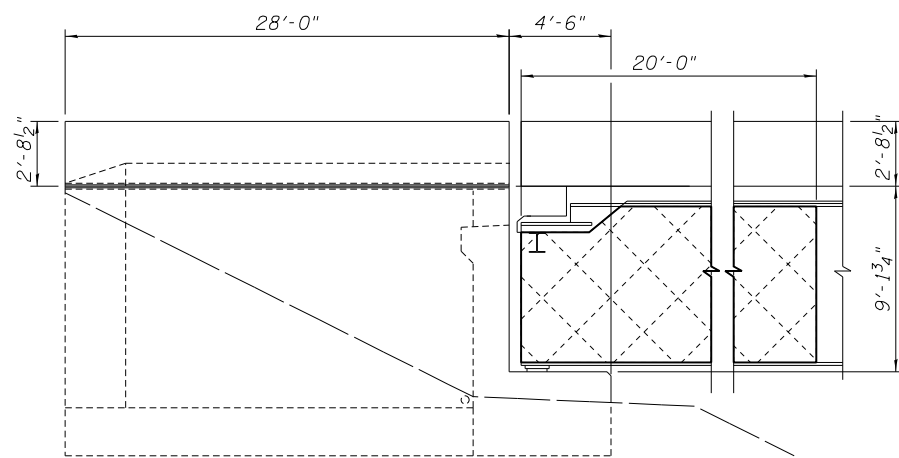


**TOP PLAN**

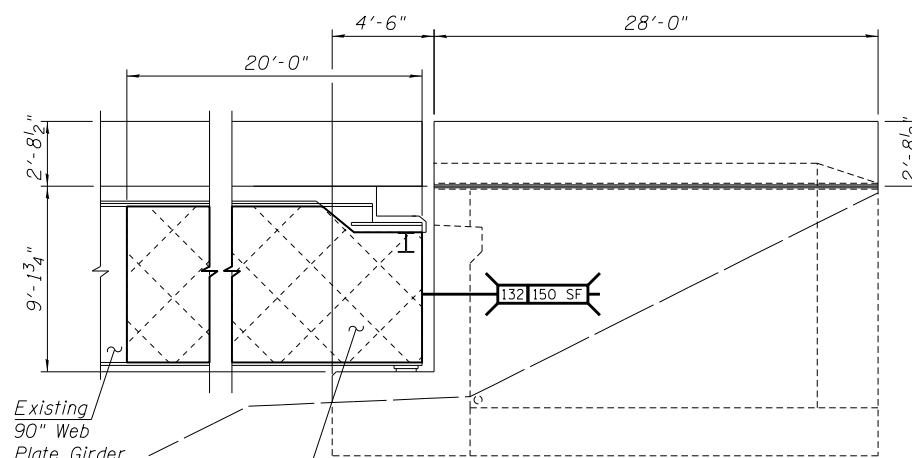


**ELEVATION**

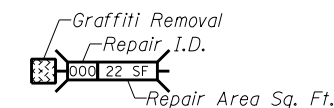
Looking South



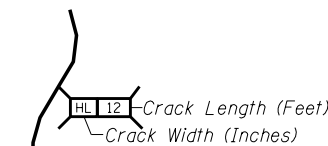
**WINGWALL ELEVATION**  
East Wing



**WINGWALL ELEVATION**  
West Wing



**GRAFFITI REMOVAL**



**CRACKS < 1/16"**  
Hairline Cracks (HL) or Cracks < 1/16" not to be Sealed.

**REPAIRS LIST - SOUTH ABUTMENT**

I.D.	Description	Pay Item	Units	Quantity
132	Beams 1-7, Each Web Face	Graffiti Removal	SQ. YD.	233.3

DESIGNED -	EXAMINED _____	DATE - _____
CHECKED -	ENGINEER OF STRUCTURAL SERVICES	
DRAWN Rod	PASSED _____	
CHECKED MNM	ENGINEER OF BRIDGES AND STRUCTURES	

**STATE OF ILLINOIS  
DEPARTMENT OF TRANSPORTATION**

**REPAIRS TO - SOUTH ABUTMENT  
STRUCTURE NO. 060-0255**

SHEET NO. 16 OF 48 SHEETS

F.A.P. RTE.	SECTION	COUNTY	TOTAL SHEETS	SHEET NO.
304	100B-IDS-1	MADISON	58	26
CONTRACT NO. 76E73				