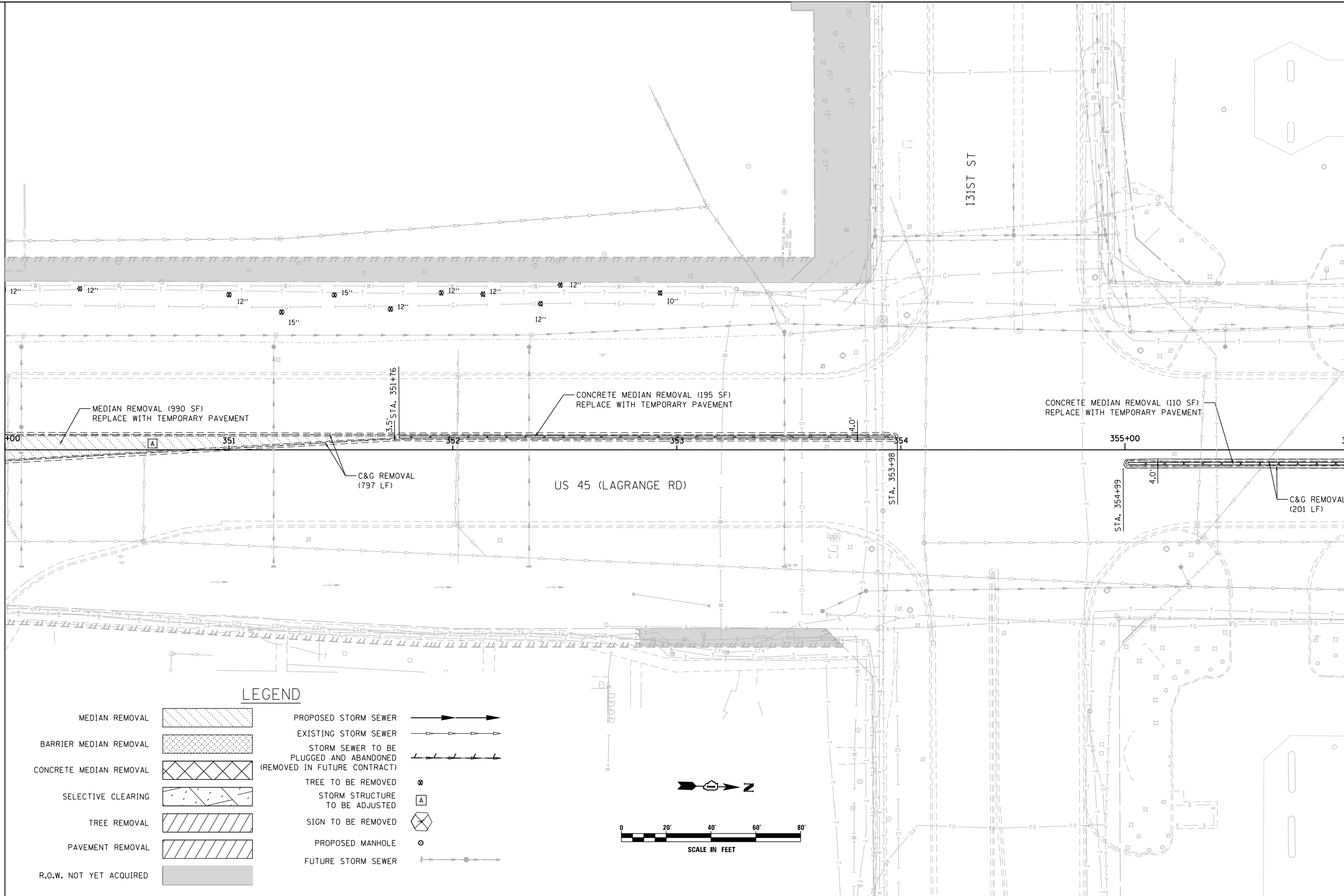


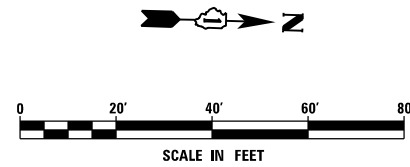
SEE SHEET P-31
 MATCH LINE STA. 350+00.00



MATCH LINE STA. 356+00.00
 SEE SHEET P-33

LEGEND

- | | | | |
|-------------------------|--|--|--|
| MEDIAN REMOVAL | | PROPOSED STORM SEWER | |
| BARRIER MEDIAN REMOVAL | | EXISTING STORM SEWER | |
| CONCRETE MEDIAN REMOVAL | | STORM SEWER TO BE PLUGGED AND ABANDONED (REMOVED IN FUTURE CONTRACT) | |
| SELECTIVE CLEARING | | TREE TO BE REMOVED | |
| TREE REMOVAL | | STORM STRUCTURE TO BE ADJUSTED | |
| PAVEMENT REMOVAL | | SIGN TO BE REMOVED | |
| R.O.W. NOT YET ACQUIRED | | PROPOSED MANHOLE | |
| | | FUTURE STORM SEWER | |



FILE NAME = D:\160W09-SHT-DRAINPR32.dgn	USER NAME = Anthony.Plutz	DESIGNED - EJD	REVISED -
SHT_PLAN	PLOT SCALE = 48.000000' / in.	DRAWN - EJD	REVISED -
	PLOT DATE = 1/7/2013	CHECKED - JWM	REVISED -
		DATE - 01/02/13	REVISED -

**STATE OF ILLINOIS
 DEPARTMENT OF TRANSPORTATION**

REMOVAL, TEMPORARY PAVEMENT, AND DRAINAGE PLAN

SCALE: 1"=20' SHEET 32 OF 37 SHEETS STA. 350+00.00 TO STA. 356+00.00

F.A.P. RTE. 330	SECTION 2012-0881	COUNTY COOK	TOTAL SHEETS 152	SHEET NO. 57
P-32		CONTRACT NO. 60W09		
ILLINOIS FED. AID PROJECT				