

STANDARDS

1	TITLE SHEET
2	INDEX AND STANDARDS SHEET
3	GENERAL NOTES AND DETAILS SHEET
4	SUMMARY OF QUANTITIES SHEET
5	SCHEDULE OF QUANTITIES SHEET
6-7	STREET PLAN SHEETS
8	TRAFFIC CONTROL PLAN
9-10	PAVEMENT MARKING PLAN

000001-08	Standard Symbols, Abbreviations and Patterns
280001-07	Temporary Erosion Control Systems
606001-08	Concrete Curb Type B and Combination Concrete Curb and Gutter
701001-02	Off-Road Operations, 2L, 2W, More Than 15' (4.5 m) Away
701006-05	Off-Road Operations, 2L, 2W, 15' (4.5 m) to 24" (600 mm) from Pavement Edge
701011-04	Off-Road Moving Operations, 2L, 2W, Day Only
701301-04	Lane Closure, 2L, 2W, Short Tim Operations
701501-06	Urban Lane Closure, 2L 2W, Undivided
701801-06	Sidewalk, Corner or Crosswalk Closure
701901-10	Traffic Control Devices
720001-01	Sign Panel Mounting Details
720006-04	Sign Panel Erection Details
720011-01	Metal Posts for Signs, Markers & Delineators
728001-01	Telescoping Steel Sign Support
BLR 17-4	Traffic Control Devices Day Labor Construction
BLR 21-9	Typical Application of Traffic Control Devices for Construction on Rural Local Highways
BLR 22-7	Typical Application of Traffic Control Devices for Construction on Rural Local Highways (Two-Lane Two Way Rural Traffic) (Road Closed to THRU Traffic)

MILANO & GRUNLOH ENGINEERS, LLC
114 W. WASHINGTON AVE. | PO BOX 897
EFFINGHAM, IL 62401
Phone: (217) 347-7262 | (800) 677-2714
Email: mgengineers@mgengineers.com
Web: www.mgengineers.com
Design Firm #184-003108



RANDOLPH STREET
VEHICLE IMPROVEMENTS
VANDALLIA, ILLINOIS

SHEET #
2 OF 10

JOB #
20210 BG3

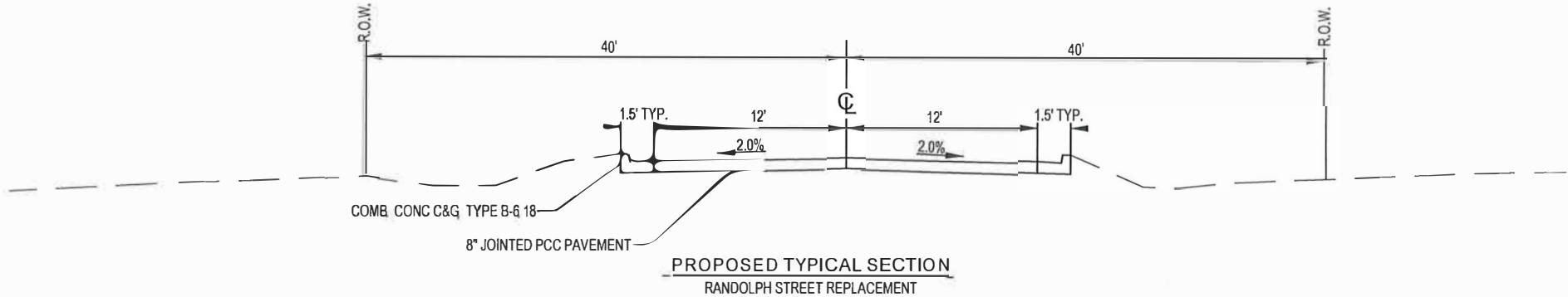
GENERAL NOTES

1. Pavement grades shown are at the top of pavement surfaces, unless otherwise noted in the plans.
2. Erosion control measures shall be in accordance with IDOT Specifications. Placement shall be directed by the Engineer.
3. All elevations refer to U.S.G.S. mean sea level datum, - NAVD 88
4. Any reference to a standard in the plans shall be interpreted to mean the edition as indicated by the sub-number listed on Sheet 2.
5. CURB AND GUTTER, WALKS, SLABS, AND PCC DRIVEWAY PAVEMENT

A. Concrete curb and gutter shall be in accordance with IDOT Std. Spec. Locate contraction joints at 20 ft on center, unless otherwise shown.

B. Dowel bars shall be used when Portland Cement Concrete Driveways are placed adjacent to any existing concrete. The dowel bars shall be 2 feet in length and shall be placed on 2 foot centers. Dowel bars shall not be paid for separately but shall be included in the price of the of the Portland Cement Concrete Driveway of the type and depth specified, tie driveway into pavement.
6. Existing profile of the road will be retained. CL to be Reestablished using existing Curb & Gutter. Proposed Curb & Gutter shall be constructed with a staked offset from existing CL.
7. No Salvage

LEGEND	
●	IRON PIN SET
○	IRON PIN FOUND
⊗	TREE (DECIDUOUS)
⊕	FIRE HYDRANT
⊗	WATER METER
⊗	VALVE (GAS OR WATER)
⊗	GAS METER
○GAS	GAS MARKER
⊗T	TELEPHONE PEDESTAL
⊗	POWER POLE
⊗	GUY ANCHOR
⊗E	ELECTRIC PEDESTAL
⊗EM	ELECTRIC METER
⊗	SIGN
○B	BOLLARD
⊗	WOOD POST
⊗	SANITARY MANHOLE
⊗	SANITARY SEWER
⊗	STORM SEWER
⊗	EXISTING TELE-COMMUNICATIONS LINE
⊗	EXISTING FIBER OPTIC LINE
⊗	PROPOSED ELEVATION
⊗	EXISTING ELEVATION
⊗	(MATCH EXISTING GRADE)
⊗	INLET PROTECTION
⊗	PIPE PROTECTION
⊗	SILT FENCE



REVISIONS

NO.	DATE	BY	DESCRIPTION
1	10/01/2020	MM	ISSUED FOR PERMITS

FIELD BOOK

B28

DRAWN BY

CHECKED BY

FILE LOCATION

SAVE DATE

MILANO & GRUNLOH ENGINEERS, LLC

114 W. WASHINGTON AVE. | PO BOX 897

EFFINGHAM, IL 62401

Phone: (217) 347-7263 | (800) 677-2714

Email: mgeengineers@mgeengineers.com

Web: www.mgeengineers.com

Design Firm #184-003 008

GENERAL NOTES AND DETAILS

RANDOLPH STREET PAVEMENT IMPROVEMENT S

VANDALIA, ILLINOIS

SHEET #

3 OF 10

JOB #

20210 BG3

ITEM No.	ITEM	UNIT	QUANTITY
28000510	INLET FILTERS	EACH	2
35100100	AGGREGATE BASE COURSE, TYPE A	TON	55
42000301	PORTLAND CEMENT CONCRETE PAVEMENT 8" (JOINTED)	SQ YD	6,268
42101300	PROTECTIVE COAT	SQ YD	6,268
44000100	PAVEMENT REMOVAL	SQ YD	6,268
44000500	COMBINATION CURB AND GUTTER REMOVAL	FOOT	1,014
60260100	INLETS TO BE ADJUSTED	EACH	2
60604400	COMBINATION CONCRETE CURB AND GUTTER, TYPE B-6.18	FOOT	1,326
67100100	MOBILIZATION	L SUM	1
70107025	CHANGEABLE MESSAGE SIGN	CAL DA	7
* 78001110	PAINT PAVEMENT MARKING - LINE 4"	FOOT	2,500
* 78001180	PAINT PAVEMENT MARKING - LINE 24"	FOOT	63
X7010216	TRAFFIC CONTROL AND PROTECTION, (SPECIAL)	L SUM	1
Z0018900	DRILL AND GROUT DOWEL BARS	EACH	52

* SPECIALTY ITEM

FIELD BOOK

250

11/08/2024 11:35

DESIGNED BY

ALH

DATE

CHECKED BY

DATE

FILE LOCATION

SAVE DATE

11/08/2024 11:35

MILANO & GRUNLOH ENGINEERS, LLC
114 W. WASHINGTON AVE. | PO BOX 887
EFFINGHAM, IL 62401
Phone: (217) 347-7262 | (800) 677-2714
Email: mgeengineers@mgeengineers.com
Web: www.mgeengineers.com
Design Firm #184-003108

SUMMARY OF QUANTITIES SHEET

RANDOLPH STREET
PAVEMENT IMPROVEMENTS
VANDALIA, ILLINOIS

SHEET #

4 OF 10

JOB #

20210 BGG

PAVEMENT SCHEDULE												
START STA.	END STA.	OFFSET	AGGREGATE BASE COURSE, TYPE A	PORTLAND CEMENT CONCRETE PAVEMENT 8" (JOINTED)	PROTECTIVE COAT	PAVEMENT REMOVAL	COMBINATION CURB AND GUTTER REMOVAL	INLETS TO BE ADJUSTED	COMBINATION CONCRETE CURB AND GUTTER, TYPE B-6.18	PAINT PAVEMENT MARKING - LINE 4"	PAINT PAVEMENT MARKING - LINE 24"	DRILL AND GROUT DOWEL BARS
			35100100	42000301	42101300	44000100	44000500	60260100	60604400	78001110	78001180	Z0018900
			TON	SQYD	SQ YD	SQYD	FOOT	EACH	FOOT	FOOT	FOOT	EACH
92+70.5	92+70.5	-										26
92+70	72+65	-	55	6268	6268	6268				2500		
92+70	91+15	15.00 LT							156			
92+70	91+15	14.00 RT							156			
91+04	90+95	15.00 LT					9		9			
90+92.5	90+83	14.00 RT					9		9			
90+04	89+95	14.00 RT					9		9			
90+03	89+95	15.00 LT					8		8			
89+65.5	89+20.5	15.00 LT					45		45			
89+06	88+91	14.00 RT					15		15			
89+03	88+94	14.00 LT					9		9			
88+04	87+96	14.00 LT					8		8			
88+05	86+94	14.00 RT					111		111			
87+65	86+96	14.00 LT					69		69			
87+49	87+36	25.00 LT									13	
86+31.5	85+95	14.00 LT					37		37			
86+02	85+93	14.00 RT					9		9			
85+55	85+50	14.00 RT					5		5			
85+11	84+93	14.00 RT					18		18			
85+05	84+93	14.00 LT					12		12			
84+28.5	83+95	15.50 LT					48		48			
84+28.5	83+39	14.00 LT					89		89			
84+11.5	83+96.5	15.50 RT					27		27			
84+11.5	83+39	14.00 RT					73		73			
-	84+06.5	15.00 RT						1				
84+03	83+84	25.00 LT									19	
83+39.5	83+73	15.50 LT					48		48			
-	83+64.5	31.00 LT						1				
83+64.5	83+50	15.50 RT					27		27			
83+01	82+93	14.00 RT					8		8			
83+02	82+79	14.00 LT					23		23			
82+10.5	81+94	14.00 RT					16		16			
82+01	81+91	14.00 LT					10		10			
81+72	81+65	14.00 RT					7		7			
80+95	81+00	14.00 RT					5		5			
80+99	80+93	14.00 LT					6		6			
80+50	80+35	25.00 LT									15	
80+02	79+91	14.00 RT					11		11			
79+27.5	79+22.5	14.00 LT					5		5			
79+27.5	79+22	14.00 RT					5		5			
79+00	78+95	14.00 RT					5		5			
78+99	78+94	14.00 LT					5		5			
78+59.5	78+49.5	14.00 LT					10		10			
77+99	77+94	14.00 RT					5		5			
78+00	77+94	14.00 LT					6		6			
77+00.5	76+92.5	14.00 LT					8		8			
77+00	76+94	14.00 RT					5		5			
76+07	75+90	14.00 RT					17		17			
75+99	75+92	14.00 LT					7		7			
75+59	75+54	14.00 RT					5		5			
75+00	74+77	14.00 LT					23		23			
74+99	74+94.5	14.00 RT					5		5			
73+99.5	73+85.5	14.00 RT					14		14			
73+99.5	73+75.5	14.00 LT					24		24			
73+47	73+17	14.00 RT					44		44			
73+07	72+91	25.00 RT									16	
72+99.5	72+94.5	14.00 LT					5		5			
72+96.5	72+65	14.00 RT					45		45			
72+65	72+65	-										26
TOTAL			55	6268	6268	6268	1014	2	1326	2500	63	52

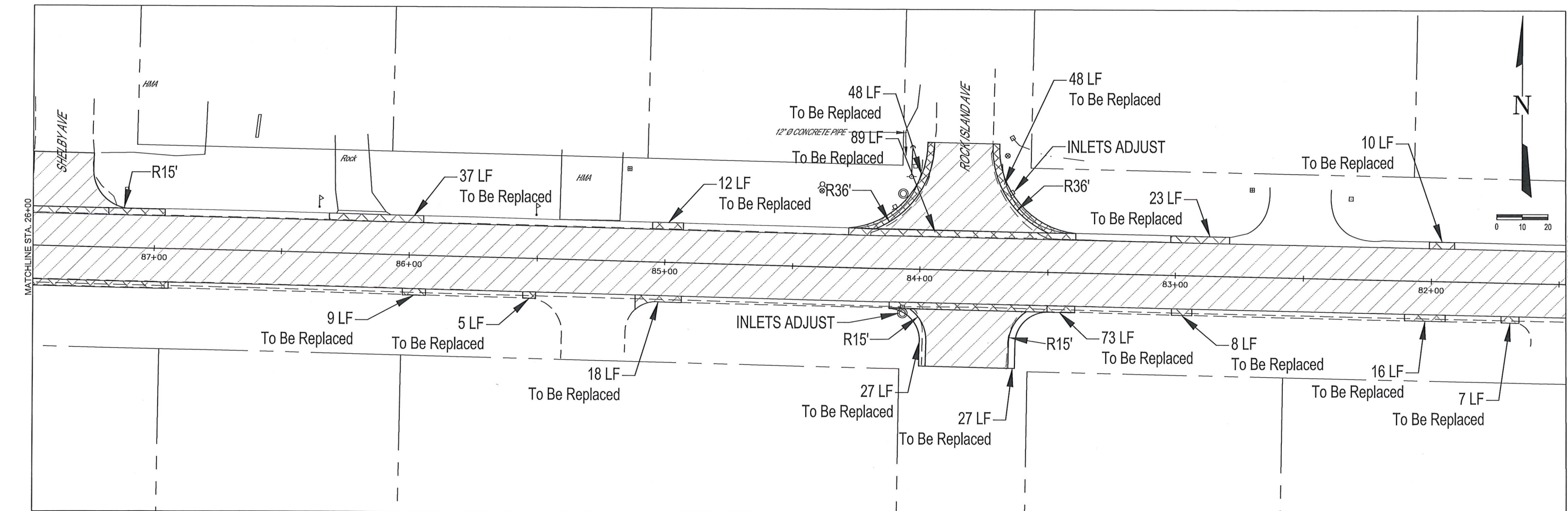
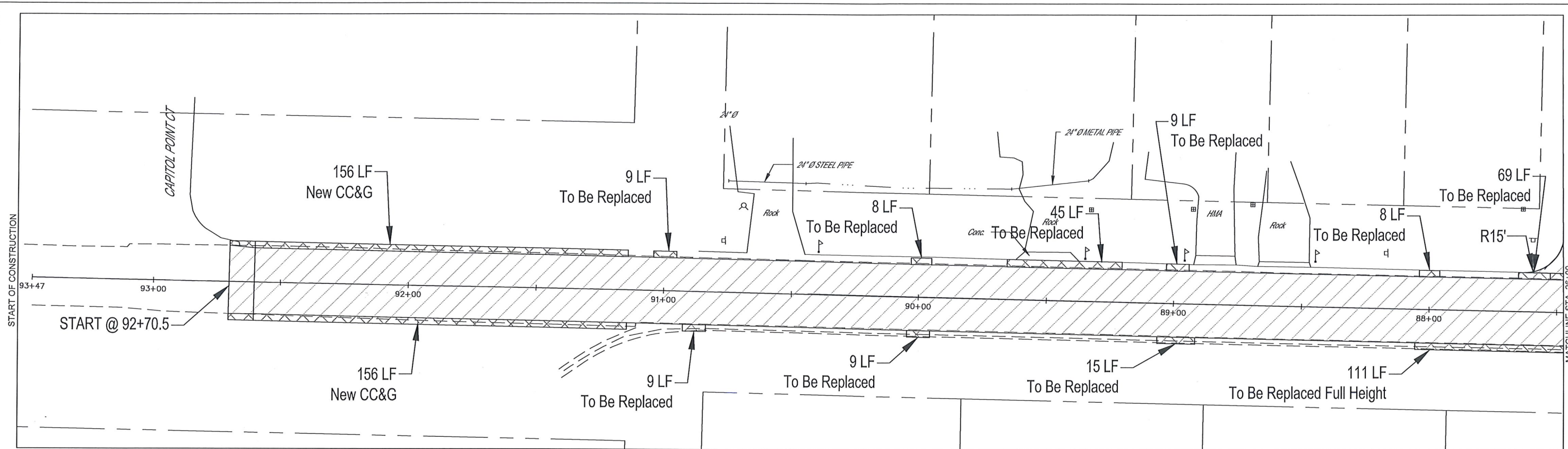
REVISION	ISSUED	DATE	BY
1	XXX	202003	XXX
2			
3			
4			
5			
6			
7			
8			
9			
10			

FIELD BOOK	829
DRAWN BY	IMH
CHECKED BY	MAT
FILE LOCATION	S:\2020\2020\BG3\DWG\TITLE SHEET.DWG
SAVE DATE	11/26/2024 1:16

MILANO & GRUNLOH ENGINEERS, LLC
114 W. WASHINGTON AVE. | PO BOX 897
EFFINGHAM, IL 62401
Phone: (217) 347-7262 | (800) 877-2714
Email: mgeengineers@mgeengineers.com
Web: www.mgeengineers.com
Design Firm #164-003108



SCHEDULE OF QUANTITIES SHEET	SHEET #
RANDOLPH STREET	5 OF 10
PAVEMENT IMPROVEMENTS	JOB #
VANDALIA, ILLINOIS	20210 BG3



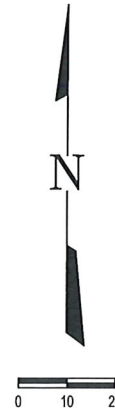
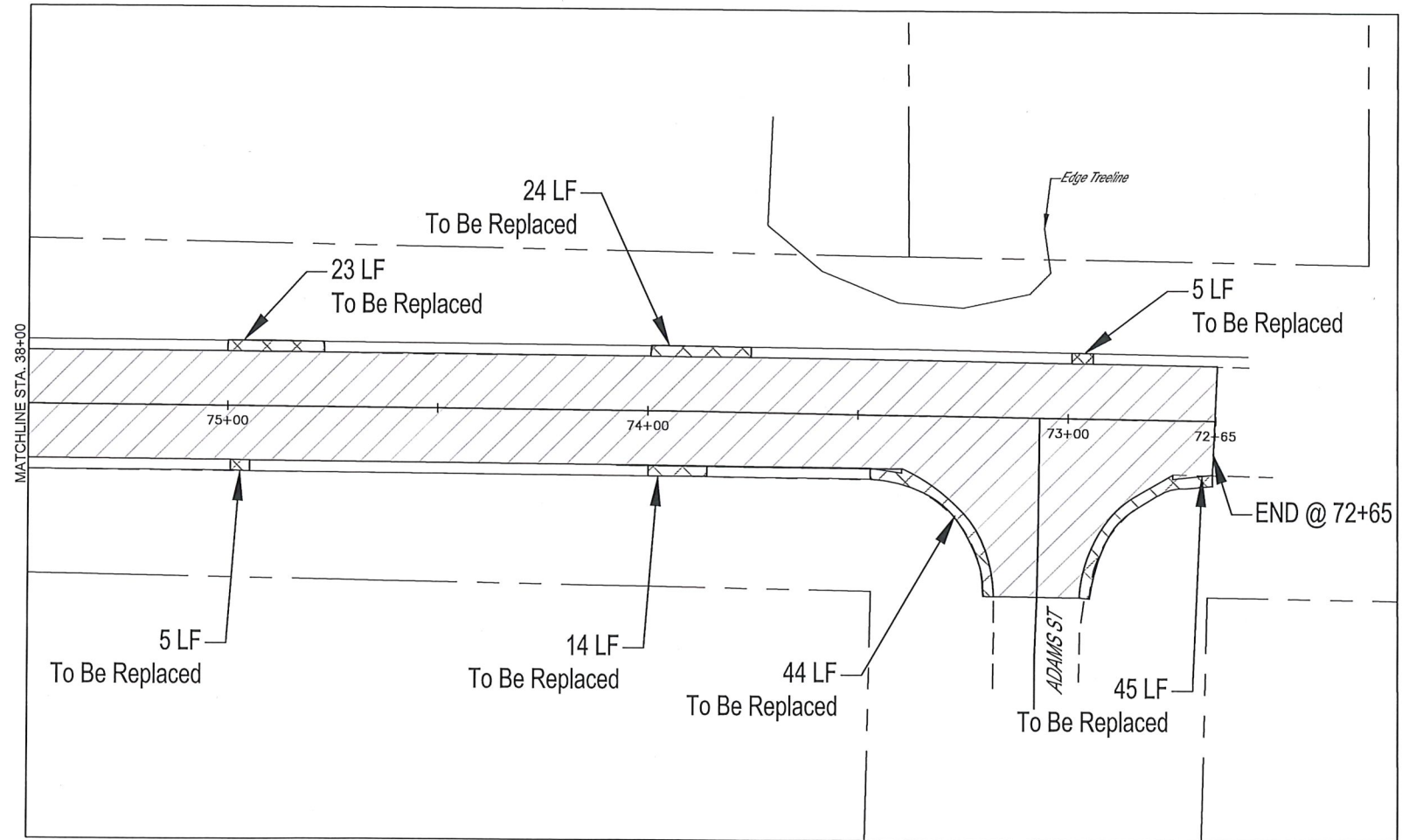
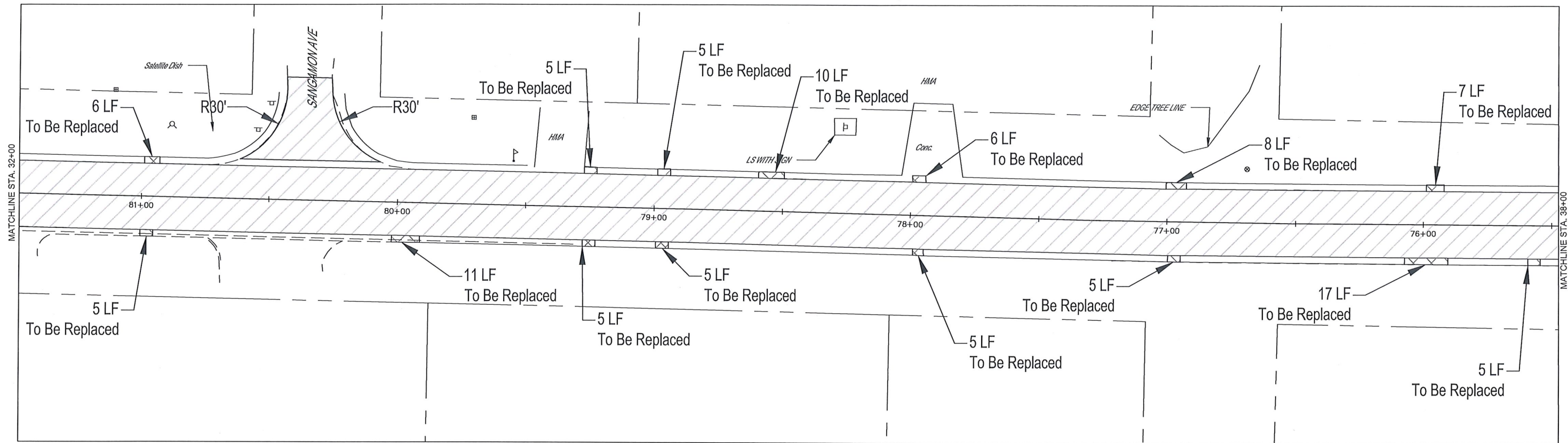
REVISION/ISSUED	
DATE	XXX/XXX/XX
BY	XXX
FIELD BOOK	
829	MJH
DRAWN BY	
CHECKED BY	MAT
FILE LOCATION	
S:\2020\2021\BG3\DWG\STREET.DWG	
SAVE DATE	
11/26/2024 1:35	

MILANO & GRUNLOH ENGINEERS, LLC
114 W. WASHINGTON AVE. | PO BOX 897
EFFINGHAM, IL 62401
Phone: (217) 347-7262 | (800) 677-2714
Email: mgenr@engrml.com
Web: www.mgenr.com
Design Firm #184-003108

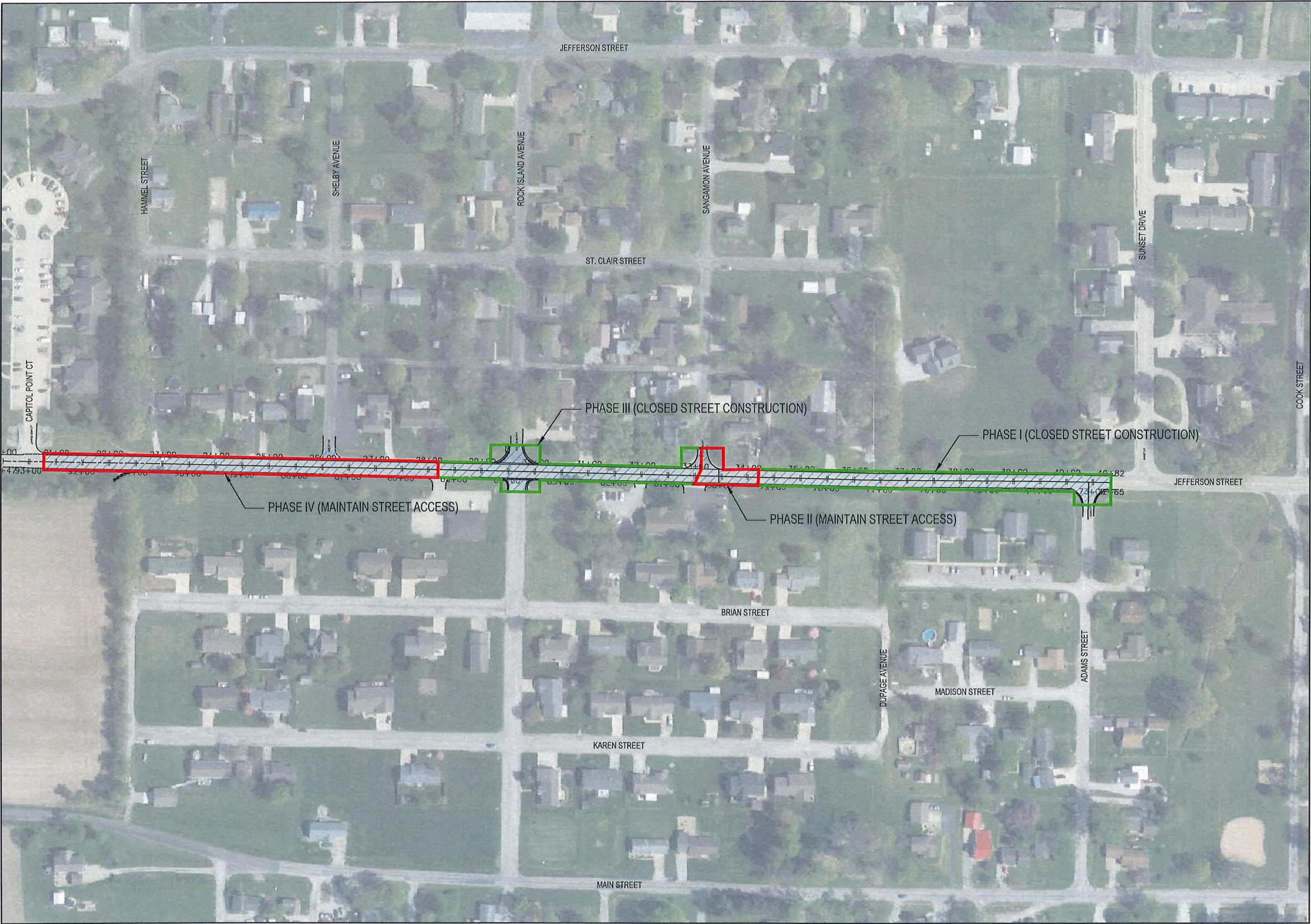
STREET PLAN SHEET
START TO STATION 32+00
RANDOLPH STREET
PAVEMENT IMPROVEMENTS
VANDALIA, ILLINOIS

SHEET #
6 OF 10

JOB #
20210 BG3



STREET PLAN SHEET STATION 32+00 TO END		SHEET # 7 OF 10	
RANDOLPH STREET PAVEMENT IMPROVEMENTS VANDALIA, ILLINOIS		JOB # 20210 BG3	
MILANO & GRUNLOH ENGINEERS, LLC 114 W. WASHINGTON AVE. PO BOX 897 EFFINGHAM, IL 62401 Phone: (217) 347-7262 (800) 677-2714 Email: mgen@engr.com Web: www.milanoengr.com Design Firm # 184-003108			
FIELD BOOK	829	DATE	11/26/2024
DRAWN BY	MMH	REVISION	ISSUED
CHECKED BY	MAT	DATE	11/26/2024
FILE LOCATION	S:\2020\20210BG3\DWG\STREET.DWG		
SAVE DATE	11/26/2024 11:35		



LEGEND

- OPEN TRAFFIC PHASE
- CLOSED TRAFFIC PHASE

SUGGESTED - SEQUENCE OF CONSTRUCTION

The following sequence of construction is stated for the project to assist in traffic control. Local traffic shall be allowed access at all times. This general sequence is in no way meant to limit concurrent operations of methods used to complete the required items of work.

The proposed improvement is *suggested* to be constructed in four separate stages. The following stages have been established for this project. Modifications may be made with prior approval of the Engineer and Owner:

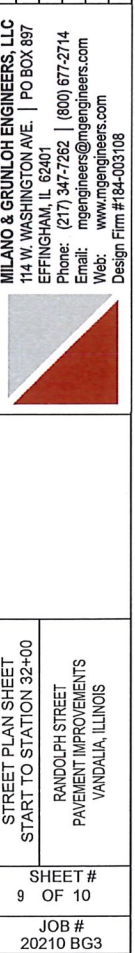
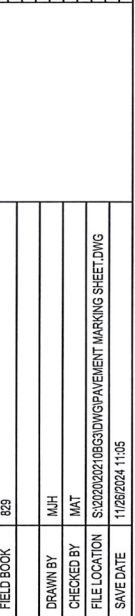
Phase I :
The Contractor shall close the street for construction. A changeable message sign and detour signage shall be placed to maintained for an alternate route to local traffic (Coordinate with City on sign location). Eastward traffic shall be detoured north along Sangamon Ave. Westward traffic shall be detoured north along Sunset Drive. All homes and businesses shall have temporary access during construction. Any additional aggregate base course for access shall be incidental to the project.

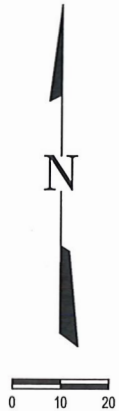
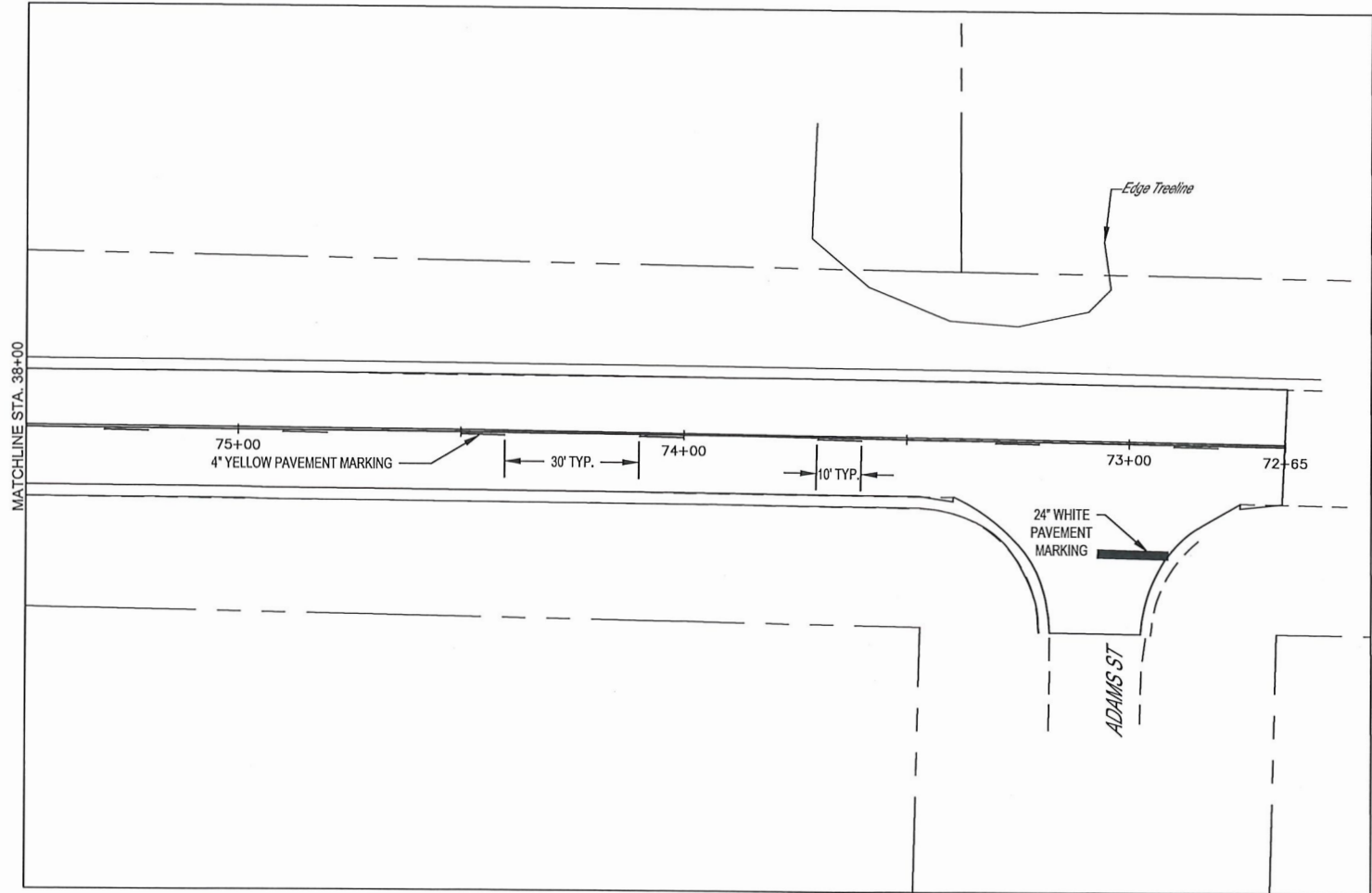
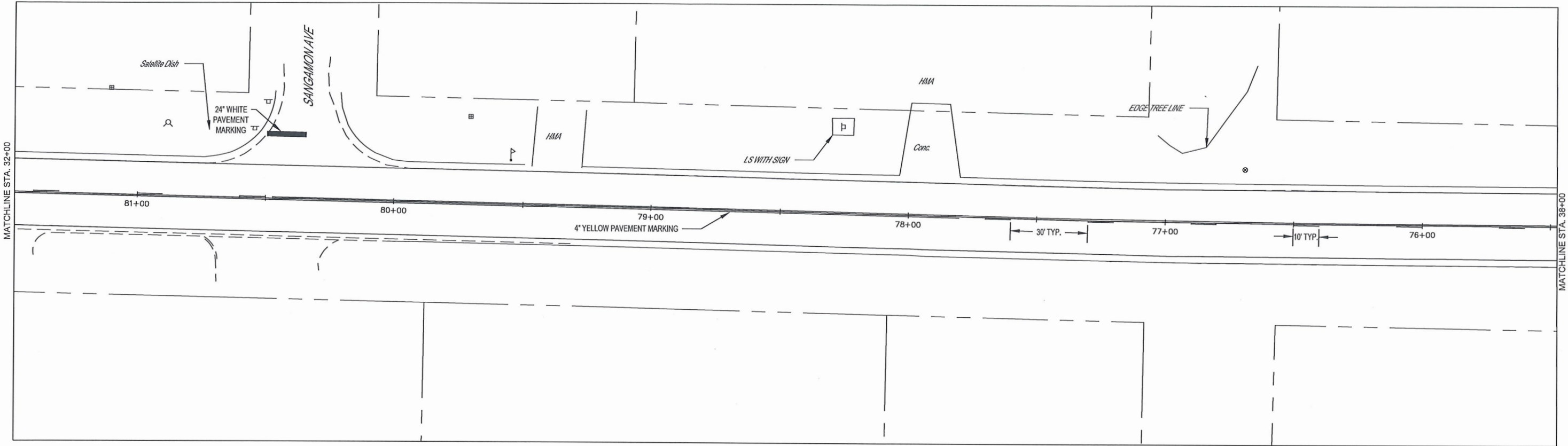
Phase II :
The Contractor shall maintain street access during this phase of construction. All homes and businesses shall have temporary access during construction. Any additional aggregate base course for access shall be incidental to the project.

Phase III :
The Contractor shall close the street for construction. A changeable message sign and detour signage shall be placed to maintained for an alternate route to local traffic (Coordinate with City on sign location). Eastward traffic shall be detoured north along Shelby Ave. Westward traffic shall be detoured north along Sangamon Ave. All homes and businesses shall have temporary access during construction. Any additional aggregate base course for access shall be incidental to the project.

Phase IV :
The Contractor shall maintain street access during this phase of construction. All homes and businesses shall have temporary access during construction. Any additional aggregate base course for access shall be incidental to the project.

FIELD BOOK	829	DATE	XX/XX/XX	REVISION ISSUED	XX
DRAWN BY	M/H	CHECKED BY	MAT	FILE LOCATION	S:\2020\2021\BG3\DWG\TRAFFIC CONTROL PLAN.DWG
MILANO & GRUNLOH ENGINEERS, LLC	114 W. WASHINGTON AVE. PO BOX 887	EFFINGHAM, IL 62401	Phone: (217) 947-7262 (800) 677-2714	Email: mge@engr.com	Web: www.mge.com
TRAFFIC CONTROL PLAN	RANDOLPH STREET	PAVEMENT IMPROVEMENTS	VANDALIA, ILLINOIS	SHEET #	8 OF 10
JOB #	20210 BG3	DESIGN FIRM #	11/26/2024 11:04	SAVE DATE	





STREET PLAN SHEET STATION 32+00 TO END		FIELD BOOK	829	DATE	11/26/2024	REVISION ISSUED	XXX
RANDOLPH STREET PAVEMENT IMPROVEMENTS VANDALIA, ILLINOIS		DRAWN BY	MJH	BY	XXX		
SHEET # 10 OF 10		CHECKED BY	MAT				
JOB # 20210 BG3		FILE LOCATION	S:\2020\2021\BG3\DWG\PAVEMENT MARKING SHEET.DWG				
		SAVE DATE	11/26/2024 11:05				
		MILANO & GRUNLOH ENGINEERS, LLC 114 W. WASHINGTON AVE. PO BOX 897 EFFINGHAM, IL 62401 Phone: (217) 347-7262 (800) 677-2714 Email: mgeengineers@mgeengineers.com Web: www.mgeengineers.com Design Firm # 184-003108					