

I.D.O.T. FEDERAL AID PROGRAM ENGINEER: CARMEN RAMOS, PE, SCHAUMBURG, IL
CONSULTANTS: ROBINSON ENGINEERING, LTD. 708-331-6700

03-07-2024 LETTING ITEM 160

STATE OF ILLINOIS
DEPARTMENT OF TRANSPORTATION

F.A.U. RTE.	SECTION	COUNTY	TOTAL SHEETS	SHEET NO.
2933	24-00179-00-RS	COOK	21	1
ILLINOIS CONTRACT NO. 61L27				

PLANS FOR PROPOSED
FEDERAL AID HIGHWAY

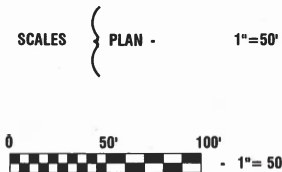
FAU 2933 (STONY ISLAND AVENUE)
THORNTON-LANSING ROAD TO 186TH STREET
ROADWAY RESURFACING
SECTION NO.: 24-00179-00-RS
PROJECT NO.: D74F(960)
VILLAGE OF LANSING
COOK COUNTY
JOB NO.: C-91-063-25

FOR INDEX OF SHEETS, SEE SHEET NO. 2

FOR HIGHWAY STANDARDS, SEE SHEET NO. 2

STONY ISLAND AVENUE

2022 ADT-	3,650
POSTED SPEED LIMIT-	30 MPH
FUNCTIONAL CLASSIFICATION-	MAJOR COLLECTOR

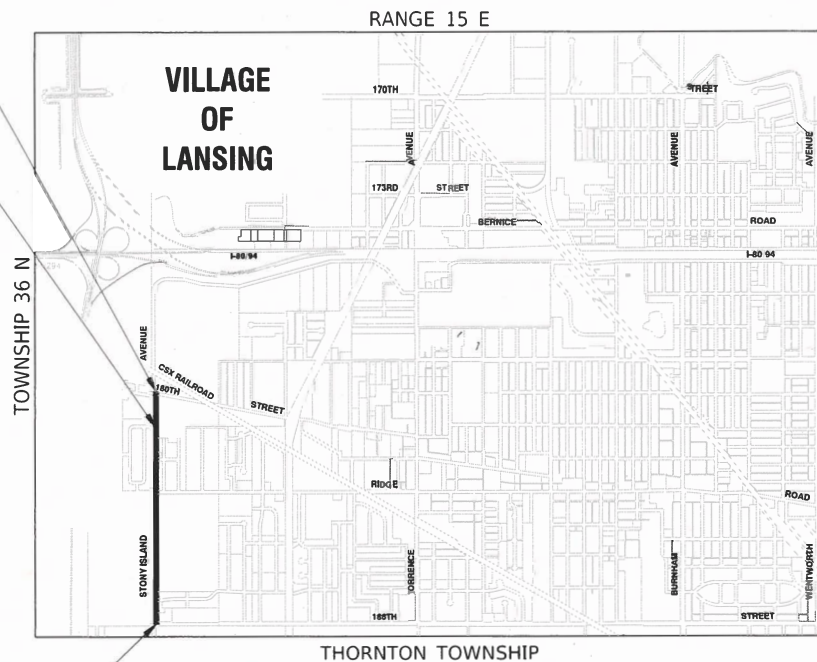


FULL SIZE PLANS HAVE BEEN PREPARED USING STANDARD
ENGINEERING SCALES, REDUCED SIZED PLANS WILL NOT
CONFORM TO STANDARD SCALES, IN MAKING MEASUREMENTS
ON REDUCED PLANS, THE ABOVE SCALES MAY BE USED.

J. U. L. I. E.
JOINT UTILITY LOCATION INFORMATION FOR EXCAVATION
1 - 800 - 892 - 0123
OR 811

END PROJECT
STA 47 + 29.00 STONY ISLAND AVENUE
END RESURFACING
STA 39 + 90.79 STONY ISLAND AVENUE

BEGIN PROJECT
STA 2 + 13.65 STONY ISLAND AVENUE



GROSS LENGTH = 4,515.35 FEET = 0.86 MILES
NET LENGTH = 3,777.14 FEET = 0.72 MILES



STATE OF ILLINOIS DEPARTMENT OF TRANSPORTATION	
APPROVED	11.20.2024 <i>Robert L. Edson</i> VILLAGE OF LANSING, MAYOR
APPROVED	11.25.2024 <i>[Signature]</i> THORNTON TOWNSHIP HIGHWAY COMMISSIONER
PASSED	Jan 2, 2025 <i>[Signature]</i> DISTRICT 1 ENGINEER OF LOCAL ROADS & STREETS
RELEASING FOR BID BASED ON LIMITED REVIEW	1.6.2025 <i>[Signature]</i> REGIONAL ENGINEER



12-17-24

PRINTED BY THE AUTHORITY OF
THE STATE OF ILLINOIS

INDEX OF SHEETS

1	COVER SHEET
2	INDEX OF SHEETS, HIGHWAY STANDARDS AND GENERAL NOTES
3-6	SUMMARY OF QUANTITIES
7	TYPICAL CROSS SECTIONS
8-9	ALIGNMENT AND TIES
10-12	PROPOSED IMPROVEMENT PLAN
13-15	PAVEMENT MARKING AND SIGNING
16-21	IDOT DISTRICT 1 STANDARDS

HIGHWAY STANDARDS

000001-08	STANDARD SYMBOLS, ABBREVIATIONS AND PATTERNS
424001-12	PERPENDICULAR CURB RAMPS FOR SIDEWALKS
442201-03	CLASS C AND D PATCHES
606001-08	CONCRETE CURB TYPE B AND COMBINATION CONCRETE CURB AND GUTTER
701001-02	OFF-RD OPERATIONS, 2L, 2W, MORE THAN 15' (4.5m) AWAY
701006-05	OFF-RD OPERATIONS, 2L, 2W, 15' (4.5m) TO 24" (600m) FROM PAVEMENT EDGE
701011-04	OFF-RD MOVING OPERATIONS, 2L, 2W, DAY ONLY
701301-04	LANE CLOSURE, 2L, 2W, SHORT TIME OPERATIONS
701311-03	LANE CLOSURE, 2L, 2W, MOVING OPERATIONS - DAY ONLY
701501-06	URBAN LANE CLOSURE, 2L, 2W, UNDIVIDED
701801-06	SIDEWALK, CORNER OR CROSSWALK CLOSURE
701901-10	TRAFFIC CONTROL DEVICES
720001-01	SIGN PANEL MOUNTING DETAILS
720006-04	SIGN PANEL ERECTION DETAILS
720011-01	METAL POSTS FOR SIGNS MARKERS AND DELINEATORS
729001-01	APPLICATIONS OF TYPES A & B METAL POSTS (FOR SIGNS & MARKERS)
780001-05	TYPICAL PAVEMENT MARKINGS

DISTRICT ONE DETAILS

BD-22	PAVEMENT PATCHING FOR HMA SURFACED PAVEMENT
BD-32	BUTT JOINTS AND HMA TAPER
TC-10	TRAFFIC CONTROL AND PROTECTION FOR SIDE ROADS, INTERSECTIONS AND DRIVEWAYS
TC-13	DISTRICT ONE TYPICAL PAVEMENT MARKINGS
TC-16	SHORT TERM PAVEMENT MARKING LETTERS AND SYMBOLS
TC-26	DRIVEWAY ENTRANCE SIGNING

GENERAL NOTES

1. ITEMS OF WORK LISTED IN THE SUMMARY OF QUANTITIES NOT SPECIFICALLY CALLED OUT ON THE PLANS SHALL BE PERFORMED AS DIRECTED BY THE ENGINEER.
2. THE ROBINSON ENGINEERING, LTD. FIELD OFFICE (708-331-6700), AND THE PUBLIC WORKS DIRECTOR, AT THE VILLAGE OF LANSING (708-895-7190), SHALL BE NOTIFIED THREE (3) WORKING DAYS BEFORE CONSTRUCTION BEGINS.
3. BEFORE STARTING ANY EXCAVATION THE CONTRACTOR SHALL CALL "J.U.L.I.E." AT (800) 892-0123 OR 811 AND (312) 744-7000 FOR FIELD LOCATIONS OF BURIED ELECTRIC, TELEPHONE AND GAS UTILITIES. (48 HOUR NOTIFICATION REQUIRED)
4. UTILITIES INDICATED ON THE PLANS ARE PROVIDED FOR THE CONTRACTOR'S USE AND ARE BASED UPON INFORMATION AVAILABLE AT THE TIME OF THE ADVERTISEMENT FOR BIDS. THE OWNER AND ENGINEER DO NOT GUARANTEE THE ACCURACY OF UTILITY INFORMATION.
5. IT SHALL BE THE CONTRACTOR'S RESPONSIBILITY TO VERIFY ALL DIMENSIONS AND CONDITIONS EXISTING IN THE FIELD PRIOR TO CONSTRUCTION AND ORDERING OF MATERIALS.
6. THE THICKNESS OF HMA MIXTURE STATED IN THE SPECIFICATIONS IS THE NOMINAL THICKNESS. DEVIATIONS FROM THE NOMINAL THICKNESS WILL BE PERMITTED WHEN SUCH DEVIATIONS OCCUR DUE TO IRREGULARITIES IN THE EXISTING SURFACE OR BASE ON WHICH THE HMA SURFACE IS PLACED.
7. ANY LOOSE MATERIAL DEPOSITED IN THE FLOW LINE OF DITCHES, GUTTERS OR OTHER DRAINAGE STRUCTURES SHALL BE REMOVED BY THE END OF EACH DAY BY THE CONTRACTOR.
8. CLASS D PATCHING QUANTITIES FOR THIS CONTRACT SHALL BE PERFORMED AT THE DIRECTION OF THE ENGINEER AFTER PAVEMENT MILLING.
9. CONTRACTOR SHALL TAKE PRECAUTION BY PRESERVING EXISTING TREES WITHIN THE RIGHT OF WAY. IF ANY DAMAGE OCCURS, TREES SHALL BE REPLACED IN KIND PER ARTICLE 201.07 REPAIR OR REPLACEMENT OF EXISTING PLANT MATERIAL REQUIREMENTS STATED HEREIN.
10. ALL EQUIPMENT SHALL BE REMOVED OFF THE VILLAGE STREETS DURING ALL HOLIDAY WEEKENDS AS COORDINATED WITH THE VILLAGE.
11. NO PAVEMENT PATCHING SHALL BE PERMITTED AFTER FRIDAY AT 3:00 PM OF EACH AND EVERY WEEK AND NO HOLES WILL BE ALLOWED TO REMAIN OPEN OVERNIGHT OR OVER THE WEEKEND.
12. HMA PAVING SHALL BE PERFORMED WITH HOT JOINTS.
13. THE CONTRACTOR SHALL CONTACT KALPANA KANNAN-HOSADURGA, THE DISTRICT ONE TRAFFIC CONTROL SUPERVISOR, AT KALPANA.KANNAN-HOSADURGA@ILLINOIS.GOV A MINIMUM OF 72 HOURS IN ADVANCE OF BEGINNING WORK.
14. BACKFILLING STORM SEWER CONSTRUCTED UNDER THE ROADWAY SPECIFIED UNDER ART. 550.07(B,C) OF THE STANDARD SPECIFICATIONS FOR ROAD AND BRIDGE CONSTRUCTION WILL NOT BE ALLOWED.
15. THE CONTRACTOR SHALL TAKE EXTRA CARE IN GRADING AND EXCAVATING NEAR TREES, SHRUBS, AND PERENNIALS WHICH ARE NOT MARKED FOR REMOVAL SO AS NOT TO CAUSE INJURY TO THE ROOT SYSTEM OR TRUNKS. ANY DAMAGE DONE TO EXISTING ITEMS BY THE CONTRACTOR SHALL BE REPAIRED BY THE CONTRACTOR AT THE CONTRACTOR'S OWN EXPENSE.
16. EXISTING VEGETATED AREAS (TREES, SHRUBS, VEGETATIVE BUFFERS, TURF AREAS, ETC.) WHERE DISTURBANCE IS NOT OCCURRING (INCLUDING AREAS OUTSIDE THE PROJECT LIMITS) SHALL NOT BE DISTURBED TO ENSURE THAT EXISTING VEGETATION IS PRESERVED HEALTHY TO MINIMIZE SOIL EROSION AND TO ELIMINATE SOIL COMPACTION. NO MATERIALS ARE TO BE STORED OR VEHICLES DRIVEN OR PARKED WITHIN THESE UNDISTURBED AREAS AT ANY TIME
17. PHOSPHORUS FERTILIZER HAS BEEN INTENTIONALLY OMITTED FROM THE CONTRACT DUE TO THE PROXIMITY TO THE EXISTING WETLANDS/BODY OF WATER. A PHOSPHORUS-FREE FERTILIZER SHALL BE USED (MIDDLE NUMBER SHOULD EQUAL 0).

				FED 80%	FED 80%
				VILLAGE 20%	VILLAGE 20%
				ROADWAY	SAFETY
CODE NO.	PAY ITEM	UNIT	TOTAL QUANTITY	CONSTRUCTION TYPE CODE	
				0005	0021
20101200	TREE ROOT PRUNING	EACH	3	3	
20200100	EARTH EXCAVATION	CU YD	30	30	
20800150	TRENCH BACKFILL	CU YD	45	45	
21101615	TOPSOIL FURNISH AND PLACE, 4"	SQ YD	2,230	2,230	
21400100	GRADING AND SHAPING DITCHES	FOOT	740	740	
25000210	SEEDING, CLASS 2A	ACRE	0.5	0.5	
25000400	NITROGEN FERTILIZER NUTRIENT	POUND	45	45	
25000600	POTASSIUM FERTILIZER NUTRIENT	POUND	45	45	
25100630	EROSION CONTROL BLANKET	SQ YD	2,230	2,230	
28000250	TEMPORARY EROSION CONTROL SEEDING	POUND	50	50	
35101600	AGGREGATE BASE COURSE, TYPE B 4"	SQ YD	12		12
40201000	AGGREGATE FOR TEMPORARY ACCESS	TON	435	435	
40600290	BITUMINOUS MATERIALS (TACK COAT)	POUND	7,765	7,765	
40600370	LONGITUDINAL JOINT SEALANT	FOOT	3,780	3,780	
40600400	MIXTURE FOR CRACKS, JOINTS, AND FLANGEWAYS	TON	17	17	
40600982	HOT-MIX ASPHALT SURFACE REMOVAL - BUTT JOINT	SQ YD	140	140	

* SPECIALTY ITEM

				FED 80%	FED 80%
				VILLAGE 20%	VILLAGE 20%
				ROADWAY	SAFETY
CODE NO.	PAY ITEM	UNIT	TOTAL QUANTITY	CONSTRUCTION TYPE CODE	
				0005	0021
40603200	POLYMERIZED HOT-MIX ASPHALT BINDER COURSE, IL-4.75, N50	TON	468	468	
40604060	HOT-MIX ASPHALT SURFACE COURSE, IL-9.5, MIX "D", N50	TON	985	985	
42300300	PORTLAND CEMENT CONCRETE DRIVEWAY PAVEMENT, 7 INCH	SQ YD	50	50	
42400200	PORTLAND CEMENT CONCRETE SIDEWALK 5 INCH	SQ FT	110		110
42400800	DETECTABLE WARNINGS	SQ FT	20		20
44000158	HOT-MIX ASPHALT SURFACE REMOVAL, 2 1/4"	SQ YD	11,350	11,350	
44000200	DRIVEWAY PAVEMENT REMOVAL	SQ YD	1,315	1,315	
44000500	COMBINATION CURB AND GUTTER REMOVAL	FOOT	175	175	
44000600	SIDEWALK REMOVAL	SQ FT	110		110
44201745	CLASS D PATCHES, TYPE III, 8 INCH	SQ YD	35	35	
44201747	CLASS D PATCHES, TYPE IV, 8 INCH	SQ YD	250	250	
48101498	AGGREGATE SHOULDERS, TYPE B 4"	SQ YD	250	250	
50105220	PIPE CULVERT REMOVAL	FOOT	335	335	
54213657	PRECAST REINFORCED CONCRETE FLARED END SECTIONS 12"	EACH	2	2	
54213669	PRECAST REINFORCED CONCRETE FLARED END SECTIONS 24"	EACH	10	10	
54213672	PRECAST REINFORCED CONCRETE FLARED END SECTIONS 27"	EACH	2	2	

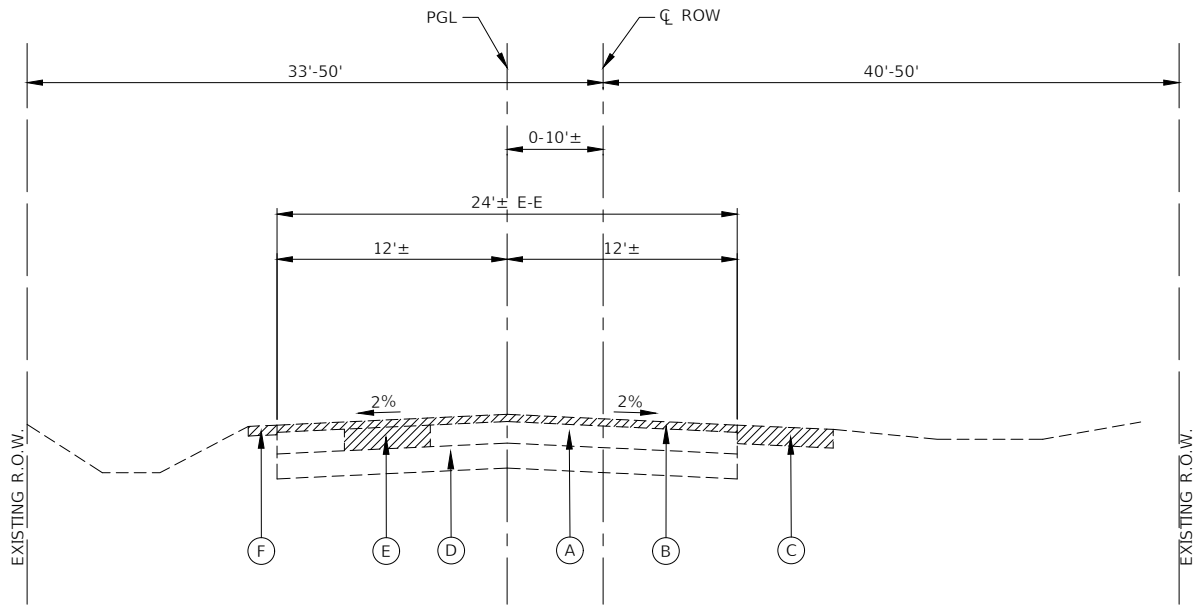
* SPECIALTY ITEM

				FED 80%	FED 80%
				VILLAGE 20%	VILLAGE 20%
				ROADWAY	SAFETY
CODE NO.	PAY ITEM	UNIT	TOTAL QUANTITY	CONSTRUCTION TYPE CODE	
				0005	0021
542A0217	PIPE CULVERTS, CLASS A, TYPE 1 12"	FOOT	22	22	
542A0229	PIPE CULVERTS, CLASS A, TYPE 1 24"	FOOT	231	231	
542A0232	PIPE CULVERTS, CLASS A, TYPE 1 27"	FOOT	82	82	
60608562	COMBINATION CONCRETE CURB AND GUTTER, TYPE M-4.12	FOOT	175	175	
* 66900200	NON-SPECIAL WASTE DISPOSAL	CU YD	95	95	
* 66900530	SOIL DISPOSAL ANALYSIS	EACH	1	1	
* 66901001	REGULATED SUBSTANCES PRE-CONSTRUCTION PLAN	L SUM	1	1	
* 66901003	REGULATED SUBSTANCES FINAL CONSTRUCTION REPORT	LSUM	1	1	
* 66901006	REGULATED SUBSTANCES MONITORING	CAL DA	5	5	
67100100	MOBILIZATION	L SUM	1	1	
70102620	TRAFFIC CONTROL AND PROTECTION, STANDARD 701501	L SUM	1	1	
70102640	TRAFFIC CONTROL AND PROTECTION, STANDARD 701801	L SUM	1	1	
70107025	CHANGEABLE MESSAGE SIGN	CAL DA	70	70	
70300100	SHORT TERM PAVEMENT MARKING	FOOT	380		380
70300150	SHORT TERM PAVEMENT MARKING REMOVAL	SQ FT	130		130
* 72000100	SIGN PANEL - TYPE 1	SQ FT	55		55

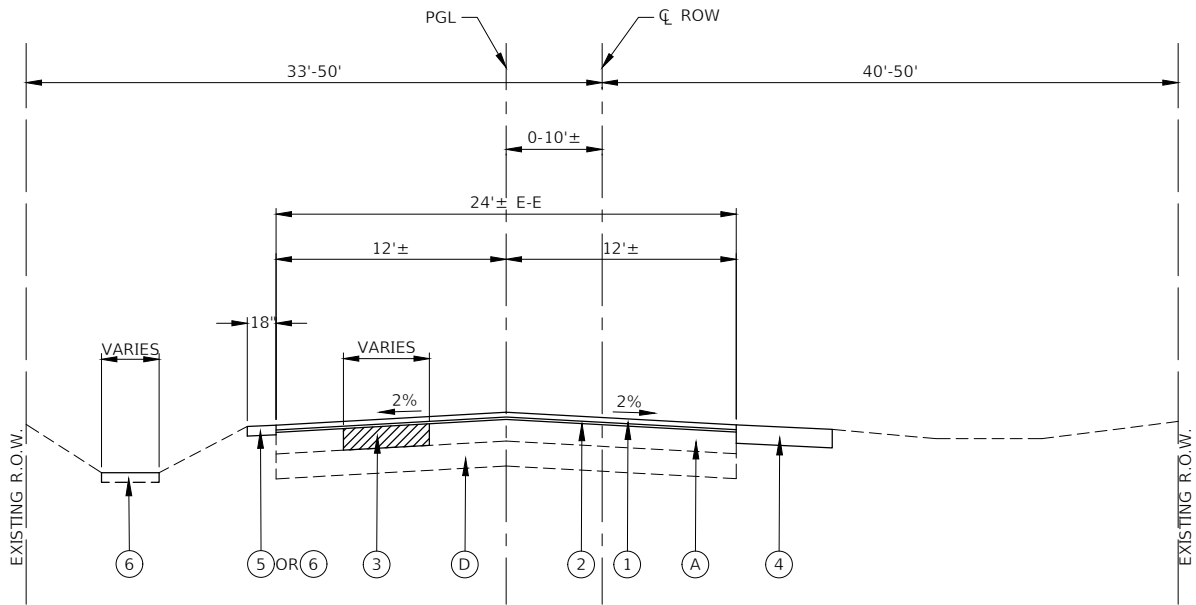
* SPECIALTY ITEM

				FED 80%	FED 80%
				VILLAGE 20%	VILLAGE 20%
				ROADWAY	SAFETY
CODE NO.	PAY ITEM	UNIT	TOTAL QUANTITY	CONSTRUCTION TYPE CODE	
				0005	0021
72400100	REMOVE SIGN PANEL ASSEMBLY - TYPE A	EACH	13		13
* 72800100	TELESCOPING STEEL SIGN SUPPORT	FOOT	120		120
* 78000100	THERMOPLASTIC PAVEMENT MARKING - LETTERS AND SYMBOLS	SQ FT	75		75
* 78000200	THERMOPLASTIC PAVEMENT MARKING - LINE 4"	FOOT	11,515		11,515
* 78000400	THERMOPLASTIC PAVEMENT MARKING - LINE 6"	FOOT	315		315
* 78000600	THERMOPLASTIC PAVEMENT MARKING - LINE 12"	FOOT	75		75
* 78000650	THERMOPLASTIC PAVEMENT MARKING - LINE 24"	FOOT	170		170
78300202	PAVEMENT MARKING REMOVAL - WATER BLASTING	SQ YD	1,550		1550
X2003001	REMOVE AND REINSTALL DECORATIVE STONE	SQ FT	90	90	
* X2011001	HIGH VISIBILITY TEMPORARY FENCING	FOOT	175	175	
X4060282	HOT-MIX ASPHALT DRIVEWAY PAVEMENT, 4"	SQ YD	1,265	1,265	
X7200061	TEMPORARY INFORMATION SIGNING	SQ FT	20		20
Z0017400	DRAINAGE & UTILITY STRUCTURES TO BE ADJUSTED	EACH	3	3	
Z0017700	DRAINAGE & UTILITY STRUCTURES TO BE RECONSTRUCTED	EACH	1	1	

* SPECIALTY ITEM



EXISTING TYPICAL SECTION
STONY ISLAND AVENUE
STA 2+13.65 TO STA 39+90.79



PROPOSED TYPICAL SECTION
STONY ISLAND AVENUE
STA 2+13.65 TO STA 39+90.79

EXISTING LEGEND

- (A) EXISTING BITUMINOUS PAVEMENT, 8" TO 10"
- (B) HOT-MIX ASPHALT SURFACE REMOVAL, 2 1/4"
- (C) DRIVEWAY PAVEMENT REMOVAL
- (D) EXISTING CONCRETE PAVEMENT, 3 1/2" TO 8"±
- (E) PAVEMENT REMOVAL FOR CLASS D PATCHES, 8 INCH
- (F) EXISTING GRASSED/AGGREGATE SHOULDER
- ITEMS TO BE REMOVED (AS DIRECTED BY THE ENGINEER)

PROPOSED LEGEND

- (1) HOT-MIX ASPHALT SURFACE COURSE, IL-9.5 MIX "D", N50, 1 1/2"
- (2) POLYMERIZED HOT-MIX ASPHALT BINDER COURSE, IL-4.75, N50, 3/4"
- (3) CLASS D PATCHES, 8 INCH (AS DIRECTED BY THE ENGINEER)
- (4) HOT-MIX ASPHALT DRIVEWAY PAVEMENT, 4" OR PORTLAND CEMENT CONCRETE DRIVEWAY PAVEMENT, 7 INCH
- (5) AGGREGATE SHOULDERS, TYPE B 4"
- (6) TOPSOIL FURNISH AND PLACE, 4" EROSION CONTROL BLANKET SEEDING, CLASS 2A

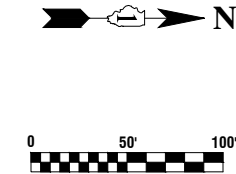
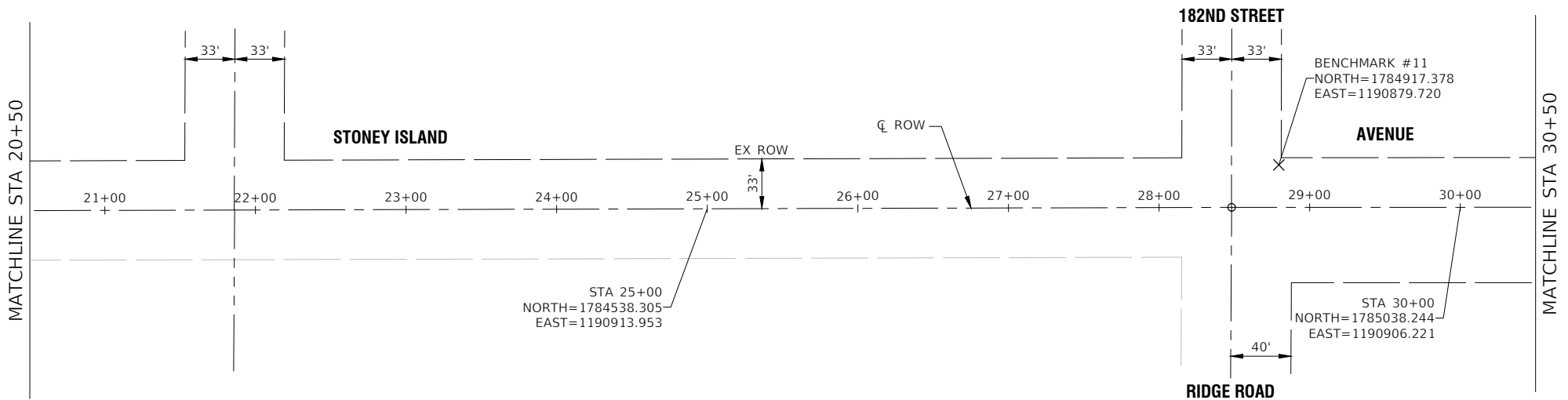
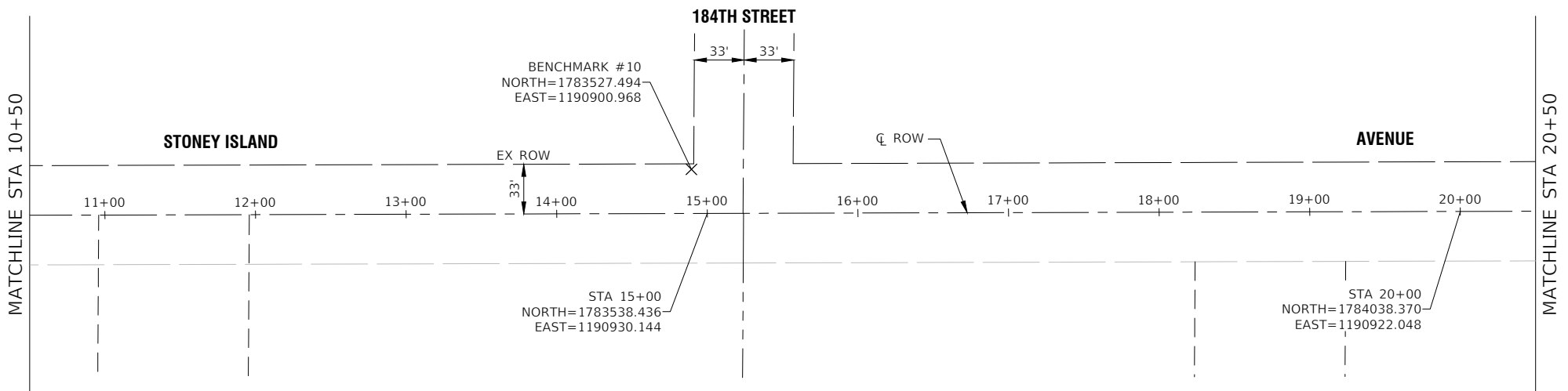
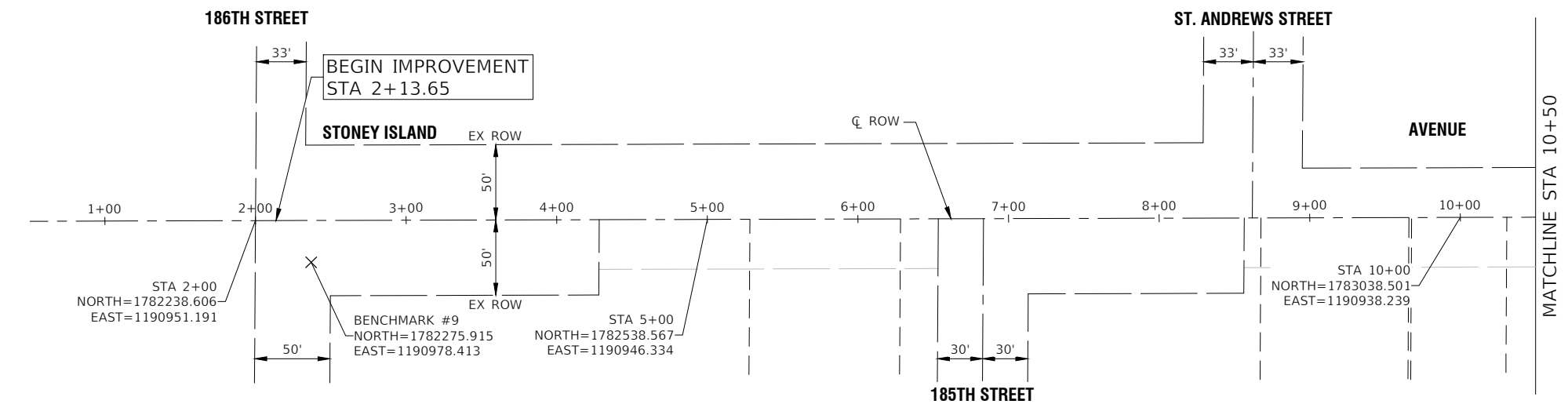
NOTE

- LONGITUDINAL JOINT SEALANT SHALL BE PLACED ON THE POLYMERIZED HOT-MIX ASPHALT BINDER COURSE, IL-4.75, N50.
- ALL PATCHING OPERATIONS SHALL TAKE PLACE AFTER SURFACE MILLING HAS BEEN COMPLETED.
- SEEDING, CLASS 2A AND AGGREGATE SHOULDERS, TYPE B 4" WILL BE PLACED AT THE DIRECTION OF THE ENGINEER.

HOT-MIX ASPHLT MIXTURE REQUIREMENTS		
MIXTURE TYPE	AIR VOIDS @ NDES	QMP
PAVEMENT RESURFACING		
HOT-MIX ASPHALT SURFACE COURSE, MIX "D", N50, IL-9.5, 1-1/2"	4% @ 50 Gyr.	LR 1030-2
POLYMERIZED HOT-MIX ASPHALT BINDER COURSE, IL-4.75, N50, 3/4"	3.5% @ 50 Gyr.	LR 1030-2
HOT-MIX ASPHALT DRIVEWAY PAVEMENT, 4"		
HOT-MIX ASPHALT SURFACE COURSE, MIX "D", N50, IL-9.5, 1-1/2"	4% @ 50 Gyr.	LR 1030-2
HOT-MIX ASPHALT BINDER COURSE, IL-19.0, N50, 2-1/2"	4% @ 50 Gyr.	LR 1030-2
CLASS D PATCHES, 8 INCH		
HOT-MIX ASPHALT BINDER COURSE, IL-19.0, 8"	4% @ 70 Gyr.	LR 1030-2
QMP DESIGNATIONS: QUALITY CONTROL/QUALITY ASSURANCE (QC/QA) PER LOCAL ROADS SPECIFICATION 1030-2		

NOTE:
UNIT WEIGHT USED TO CALCULATE ALL HMA SURFACE MIXTURE QUANTITIES IS 112 LBS/SQ YD/IN.

THE "AC TYPE" FOR POLYMERIZED HMA MIXES SHALL BE "SBS/SBR PG 76-22" AND FOR NON-POLYMERIZED HMA THE "AC TYPE" SHALL BE "PG 64-22" UNLESS MODIFIED BY RECLAIMED MATERIALS SPECIFICATION.



- NOTES**
- COORDINATES ARE BASED ON ILLINOIS STATE PLANE EASTERN ZONE NORTH AMERICAN DATUM 1983
 - SURVEY FEET UNITS WERE USED.
 - ALL ELEVATIONS REFER TO NAVD88 DATUM.

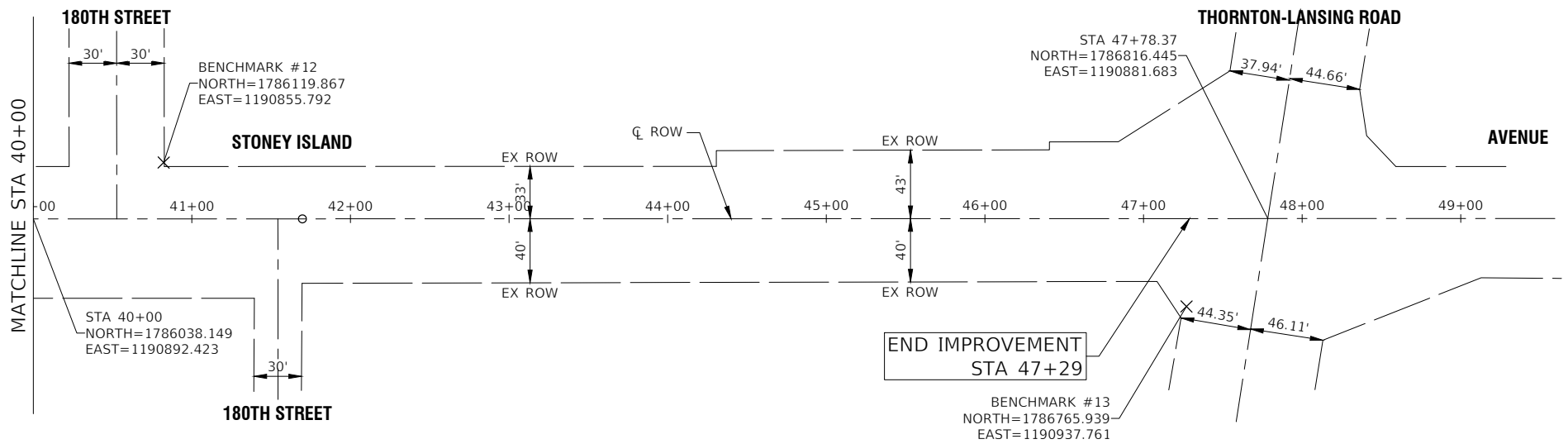
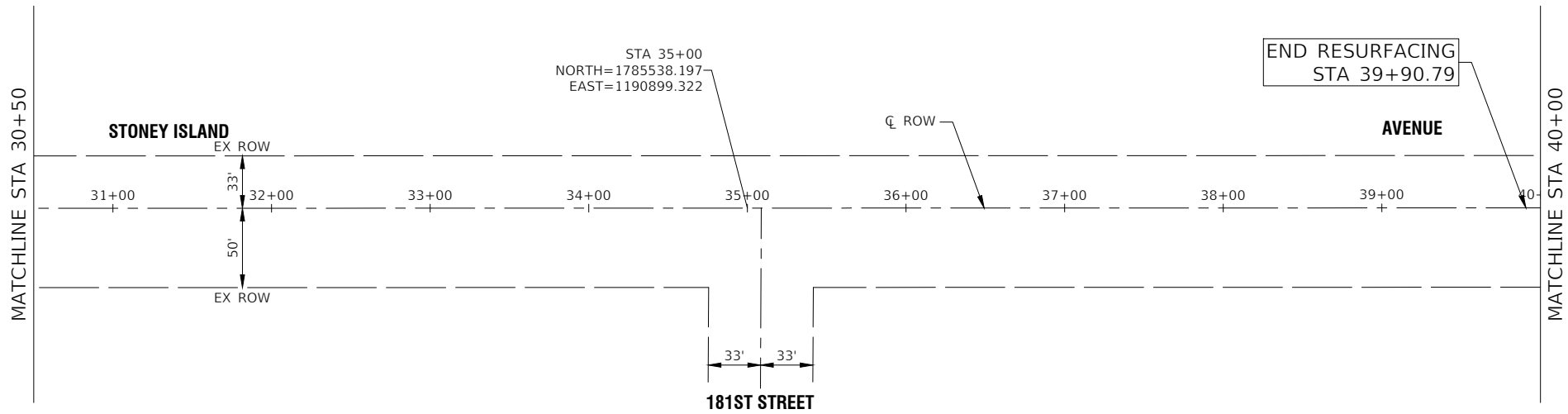
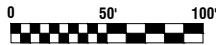
BENCHMARKS

BENCHMARK #9
RR SPIKE IN WEST FACE OF PP W/LIGHT AT THE NORTHEAST COR OF STONY ISLAND AVE & 186TH ST. ELEV=618.80

BENCHMARK #10
SPIKE NAIL IN EAST FACE OF PP AT THE SOUTHWEST COR OF STONY ISLAND AVE & 184TH ST. ELEV=617.95

BENCHMARK #11
SPIKE NAIL IN EAST FACE OF PP W/LIGHT AT THE NORTHWEST COR OF STONY ISLAND AVE & 182ND ST. ELEV=624.31

FILE NAME = 24R0421-TIES-01 - P01	USER NAME =	DESIGNED -- AL	REVISED --	STATE OF ILLINOIS DEPARTMENT OF TRANSPORTATION	STONY ISLAND AVENUE ROADWAY RESURFACING ALIGNMENT AND TIES		F.A.U RTE.	SECTION	COUNTY	TOTAL SHEETS	SHEET NO.
		CHECKED -- SDK	REVISED --				2933	24-00179-00-RS	COOK	21	8
	PLOT SCALE =	DRAWN -- DS	REVISED --				CONTRACT NO. 61L27				
	PLOT DATE = 12-17-24	CHECKED -- AG	REVISED --				FED. ROAD DIST. NO. ---	ILLINOIS	FED. AID PROJECT	D74F(960)	
				SCALE: 1"=50'		SHEET NO. 8	OF 21	SHEETS	STA.	TO STA.	



NOTES

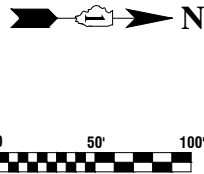
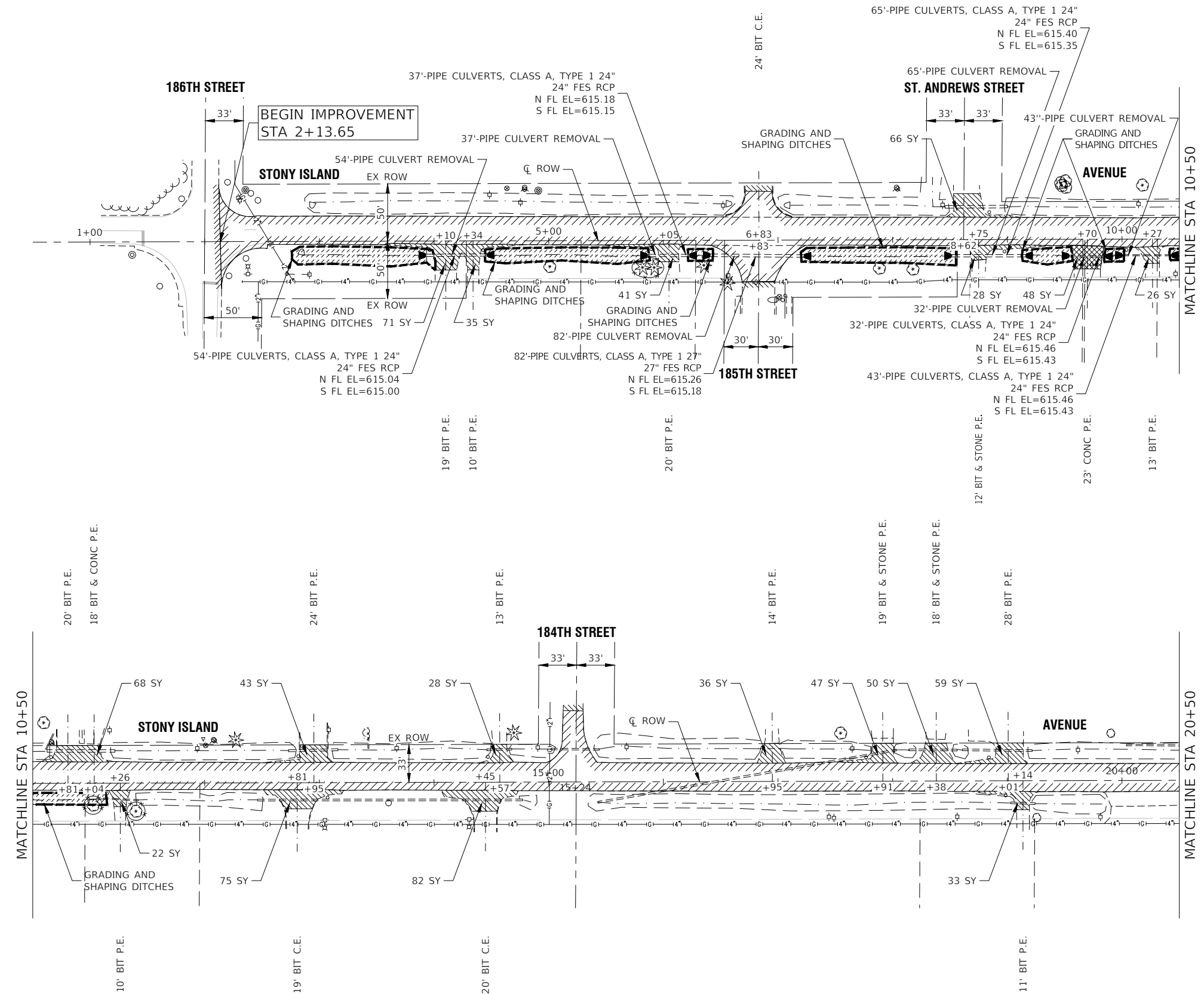
- COORDINATES ARE BASED ON ILLINOIS STATE PLANE EASTERN ZONE NORTH AMERICAN DATUM 1983
- SURVEY FEET UNITS WERE USED.
- ALL ELEVATIONS REFER TO NAVD88 DATUM.

BENCHMARKS

BENCHMARK #12
SQUARE ON NORTHEAST COR OF EAST END OF CONC WALK AT THE NORTHWEST COR OF STONY ISLAND AVE & 180TH ST.
ELEV=626.08

BENCHMARK #13
SQUARE ON TOP OF SOUTH SIDE OF CONC BASE FOR TRAFFIC SIGNAL MAST ARM POLE AT THE SOUTHEAST COR OF STONY ISLAND AVE & THORNTON-LANSING RD.
ELEV=26.23

FILE NAME = 24R0421-TIES-01 - P02	USER NAME =	DESIGNED -- AL	REVISED --	STATE OF ILLINOIS DEPARTMENT OF TRANSPORTATION	STONEY ISLAND AVENUE ROADWAY RESURFACING ALIGNMENT AND TIES		F.A.U RTE.	SECTION	COUNTY	TOTAL SHEETS	SHEET NO.
		CHECKED -- SDK	REVISED --				2933	24-00179-00-RS	COOK	21	9
	PLOT SCALE =	DRAWN -- RG	REVISED --				CONTRACT NO. 61L27				
	PLOT DATE = 12-17-24	CHECKED -- AG	REVISED --				FED. ROAD DIST. NO. ---	ILLINOIS	FED. AID PROJECT	D74F(960)	
SCALE: 1"=50'		SHEET NO. 9 OF 21 SHEETS		STA. TO STA.							



LEGEND

- HOT-MIX ASPHALT SURFACE REMOVAL, 2 1/4" POLYMERIZED HOT-MIX ASPHALT BINDER COURSE, IL-4.75, N50, 3/4" HOT-MIX ASPHALT SURFACE COURSE, IL-9.5, MIX "D", N50, 1 1/2"
- SIDEWALK REMOVAL PORTLAND CEMENT CONCRETE SIDEWALK 5 INCH AGGREGATE BASE COURSE, TYPE B 4"
- CLASS D PATCHES, 8 INCH
- DRIVEWAY PAVEMENT REMOVAL HMA DRIVEWAY PAVEMENT, 4"
- DRIVEWAY PAVEMENT REMOVAL PORTLAND CEMENT CONCRETE DRIVEWAY PAVEMENT, 7"
- TOPSOIL FURNISH & PLACE, 4" EROSION CONTROL BLANKET SEEDING, CLASS 2A
- DETECTABLE WARNINGS - DW
- COMBINATION CURB AND GUTTER REMOVAL COMBINATION CONCRETE CURB AND GUTTER, TYPE M-4.12
- HIGH VISIBILITY TEMPORARY FENCING
- "A" DRAINAGE & UTILITY STRUCTURES TO BE ADJUSTED
- "R" DRAINAGE & UTILITY STRUCTURES TO BE RECONSTRUCTED
- HMA SURFACE REMOVAL - BUTT JOINT
- BEG R&R +XX BEGIN STATION FOR CURB AND GUTTER REMOVAL AND REPLACEMENT
- END R&R +XX END STATION OF CURB AND GUTTER REMOVAL AND REPLACEMENT

NOTE:

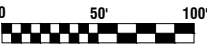
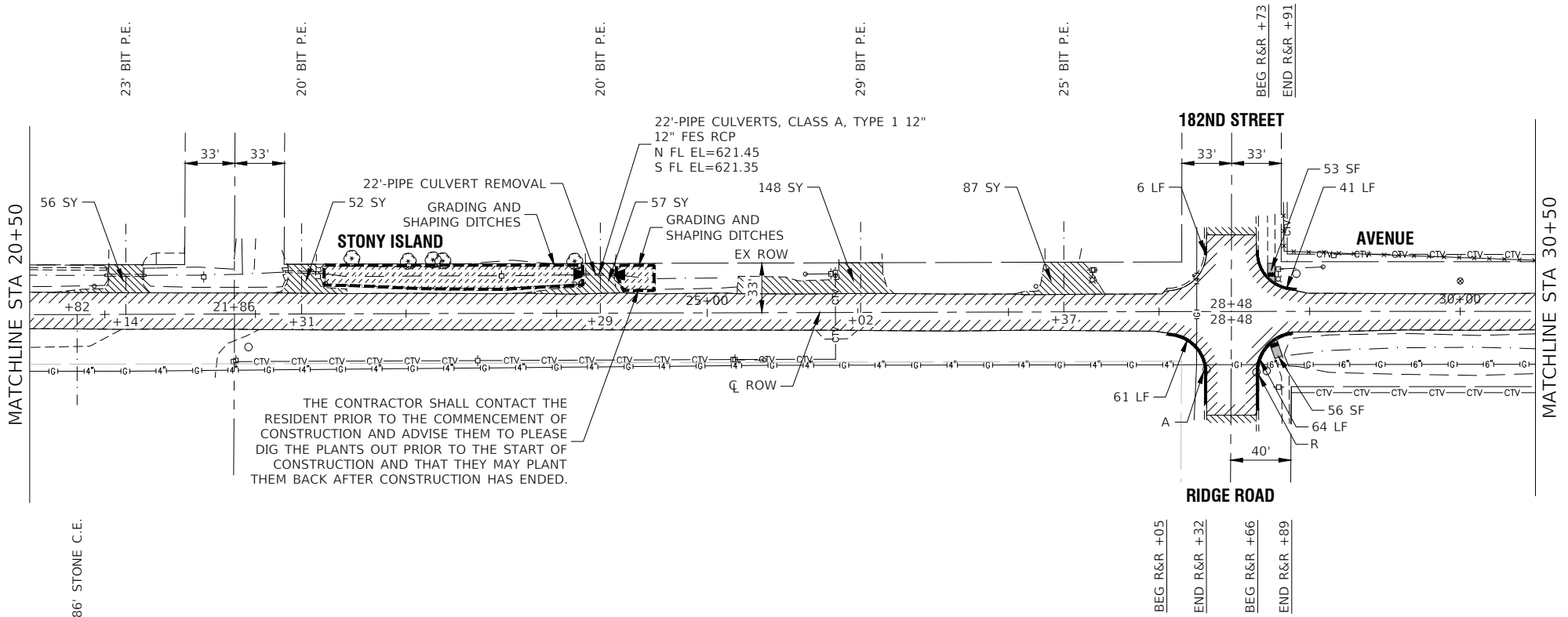
ALL SIDEWALK RAMPS SHALL BE IN ACCORDANCE WITH THE HIGHWAY STANDARDS REFERENCED ON SHEET 2.

DRIVEWAY REMOVAL AND REPLACEMENT SHALL BE COMPLETED AS DIRECTED BY THE ENGINEER.

CLASS D PATCHES, 8 INCH SHALL BE COMPLETED AS DIRECTED BY THE ENGINEER.

FES RCP WILL BE PAID FOR AS PRECAST REINFORCED FLARED END SECTIONS, AT THE SIZE SPECIFIED

FILE NAME = 24R0421-PLAN-01 - P01	USER NAME =	DESIGNED — AL	REVISED —	STATE OF ILLINOIS DEPARTMENT OF TRANSPORTATION	STONY ISLAND AVENUE ROADWAY RESURFACING PROPOSED IMPROVEMENT PLAN		F.A.U RTE.	SECTION	COUNTY	TOTAL SHEETS	SHEET NO.
		CHECKED — SDK	REVISED —				2933	24-00179-00-RS	COOK	21	10
	PLOT SCALE =	DRAWN — DS	REVISED —				CONTRACT NO. 61L27				
	PLOT DATE = 12-17-24	CHECKED — AG	REVISED —				FED. ROAD DIST. NO.	ILLINOIS	FED. AID PROJECT	D74F(960)	
SCALE: 1"=50'		SHEET NO. 10 OF 21 SHEETS		STA. TO STA.							



LEGEND

- HOT-MIX ASPHALT SURFACE REMOVAL, 2 1/4" POLYMERIZED HOT-MIX ASPHALT BINDER COURSE, IL-4.75, N50, 3/4" HOT-MIX ASPHALT SURFACE COURSE, IL-9.5, MIX "D", N50, 1 1/2"
- SIDEWALK REMOVAL PORTLAND CEMENT CONCRETE SIDEWALK 5 INCH AGGREGATE BASE COURSE, TYPE B 4"
- CLASS D PATCHES, 8 INCH
- DRIVEWAY PAVEMENT REMOVAL HMA DRIVEWAY PAVEMENT, 4"
- DRIVEWAY PAVEMENT REMOVAL PORTLAND CEMENT CONCRETE DRIVEWAY PAVEMENT, 7"
- TOPSOIL FURNISH & PLACE, 4" EROSION CONTROL BLANKET SEEDING, CLASS 2A
- DETECTABLE WARNINGS - DW
- COMBINATION CURB AND GUTTER REMOVAL COMBINATION CONCRETE CURB AND GUTTER, TYPE M-4.12
- HIGH VISIBILITY TEMPORARY FENCING
- "A" DRAINAGE & UTILITY STRUCTURES TO BE ADJUSTED
- "R" DRAINAGE & UTILITY STRUCTURES TO BE RECONSTRUCTED
- HMA SURFACE REMOVAL - BUTT JOINT
- BEG R&R +XX BEGIN STATION FOR CURB AND GUTTER REMOVAL AND REPLACEMENT
- END R&R +XX END STATION OF CURB AND GUTTER REMOVAL AND REPLACEMENT

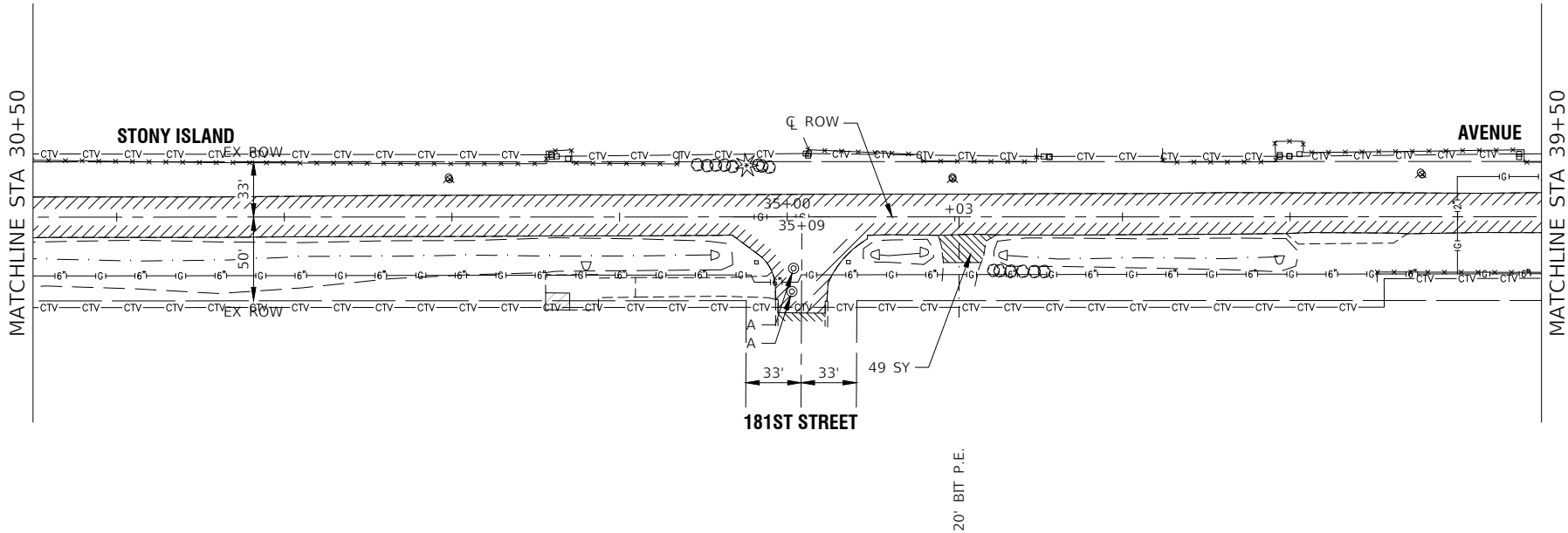
NOTE:

ALL SIDEWALK RAMPS SHALL BE IN ACCORDANCE WITH THE HIGHWAY STANDARDS REFERENCED ON SHEET 2.

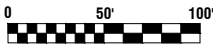
DRIVEWAY REMOVAL AND REPLACEMENT SHALL BE COMPLETED AS DIRECTED BY THE ENGINEER.

CLASS D PATCHES, 8 INCH SHALL BE COMPLETED AS DIRECTED BY THE ENGINEER.


FES RCP WILL BE PAID FOR AS PRECAST REINFORCED FLARED END SECTIONS, AT THE SIZE SPECIFIED



FILE NAME = 24R0421-PLAN-01 - P02	USER NAME =	DESIGNED -- AL	REVISED --	STATE OF ILLINOIS DEPARTMENT OF TRANSPORTATION	STONY ISLAND AVENUE ROADWAY RESURFACING PROPOSED IMPROVEMENT PLAN		F.A.U RTE.	SECTION	COUNTY	TOTAL SHEETS	SHEET NO.
		CHECKED -- SDK	REVISED --				2933	24-00179-00-RS	COOK	21	11
	PLOT SCALE =	DRAWN -- RG	REVISED --				CONTRACT NO. 61L27				
	PLOT DATE = 12-17-24	CHECKED -- AG	REVISED --				FED. ROAD DIST. NO. ---	ILLINOIS	FED. AID PROJECT	D74F(960)	
SCALE: 1"=50'		SHEET NO. 11 OF 21 SHEETS		STA. TO STA.							




LEGEND

- 

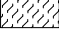
HOT-MIX ASPHALT SURFACE REMOVAL, 2 1/4"


POLYMERIZED HOT-MIX ASPHALT BINDER COURSE, IL-4.75, N50, 3/4"

HOT-MIX ASPHALT SURFACE COURSE, IL-9.5, MIX "D", N50, 1 1/2"
- 


SIDEWALK REMOVAL

PORTLAND CEMENT CONCRETE SIDEWALK 5 INCH

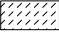
AGGREGATE BASE COURSE, TYPE B 4"
- 

CLASS D PATCHES, 8 INCH
- 

DRIVEWAY PAVEMENT REMOVAL


HMA DRIVEWAY PAVEMENT, 4"
- 


DRIVEWAY PAVEMENT REMOVAL

PORTLAND CEMENT CONCRETE DRIVEWAY PAVEMENT, 7"
- 


TOPSOIL FURNISH & PLACE, 4"

EROSION CONTROL BLANKET

SEEDING, CLASS 2A
- 


DETECTABLE WARNINGS - DW
- 

COMBINATION CURB AND GUTTER REMOVAL

COMBINATION CONCRETE CURB AND GUTTER, TYPE M-4.12
- 

HIGH VISIBILITY TEMPORARY FENCING
- "A"

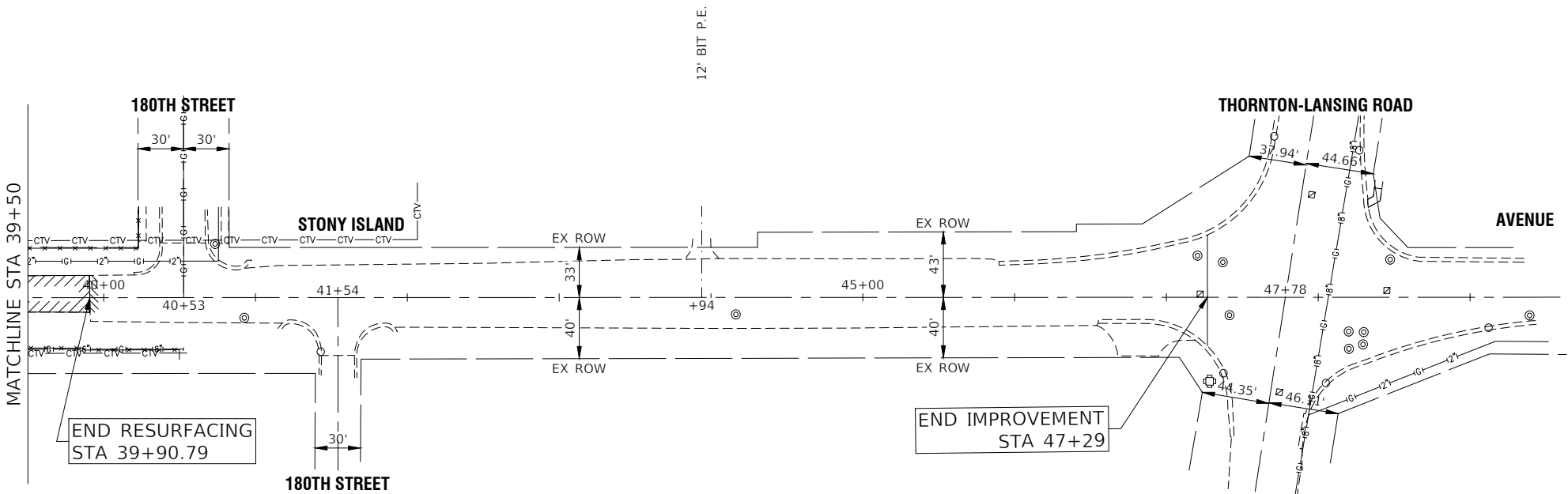
DRAINAGE & UTILITY STRUCTURES TO BE ADJUSTED
- "R"

DRAINAGE & UTILITY STRUCTURES TO BE RECONSTRUCTED
- 

HMA SURFACE REMOVAL - BUTT JOINT
- BEG R&R +XX

BEGIN STATION FOR CURB AND GUTTER REMOVAL AND REPLACEMENT
- END R&R +XX

END STATION OF CURB AND GUTTER REMOVAL AND REPLACEMENT



NOTE:

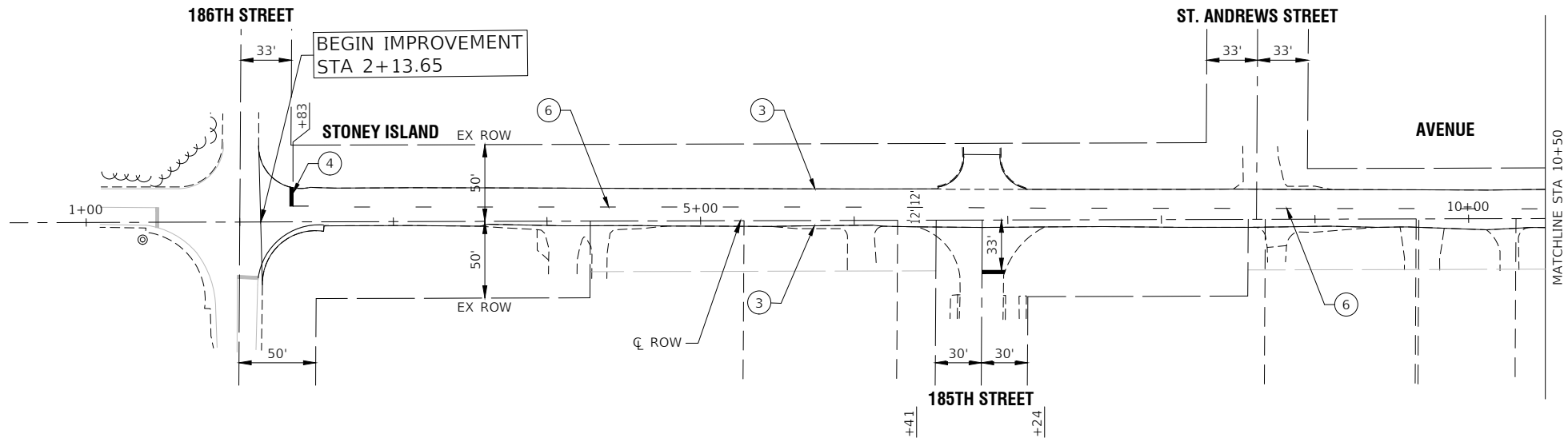
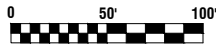
ALL SIDEWALK RAMPS SHALL BE IN ACCORDANCE WITH THE HIGHWAY STANDARDS REFERENCED ON SHEET 2.

DRIVEWAY REMOVAL AND REPLACEMENT SHALL BE COMPLETED AS DIRECTED BY THE ENGINEER.

CLASS D PATCHES, 8 INCH SHALL BE COMPLETED AS DIRECTED BY THE ENGINEER.

FES RCP WILL BE PAID FOR AS PRECAST REINFORCED FLARED END SECTIONS, AT THE SIZE SPECIFIED

FILE NAME = 24R0421-PLAN-01 - P03	USER NAME =	DESIGNED — AL	REVISED —	STATE OF ILLINOIS DEPARTMENT OF TRANSPORTATION	STONY ISLAND AVENUE ROADWAY RESURFACING PROPOSED IMPROVEMENT PLAN				F.A.U RTE.	SECTION	COUNTY	TOTAL SHEETS	SHEET NO.	
		CHECKED — SDK	REVISED —						2933	24-00179-00-RS	COOK	21	12	
	PLOT SCALE =	DRAWN — RG	REVISED —						CONTRACT NO. 61L27					
	PLOT DATE = 12-17-24	CHECKED — AG	REVISED —		SCALE: 1"=50'		SHEET NO. 12 OF 21 SHEETS		STA.	TO STA.		FED. ROAD DIST. NO. ----	ILLINOIS	FED. AID PROJECT

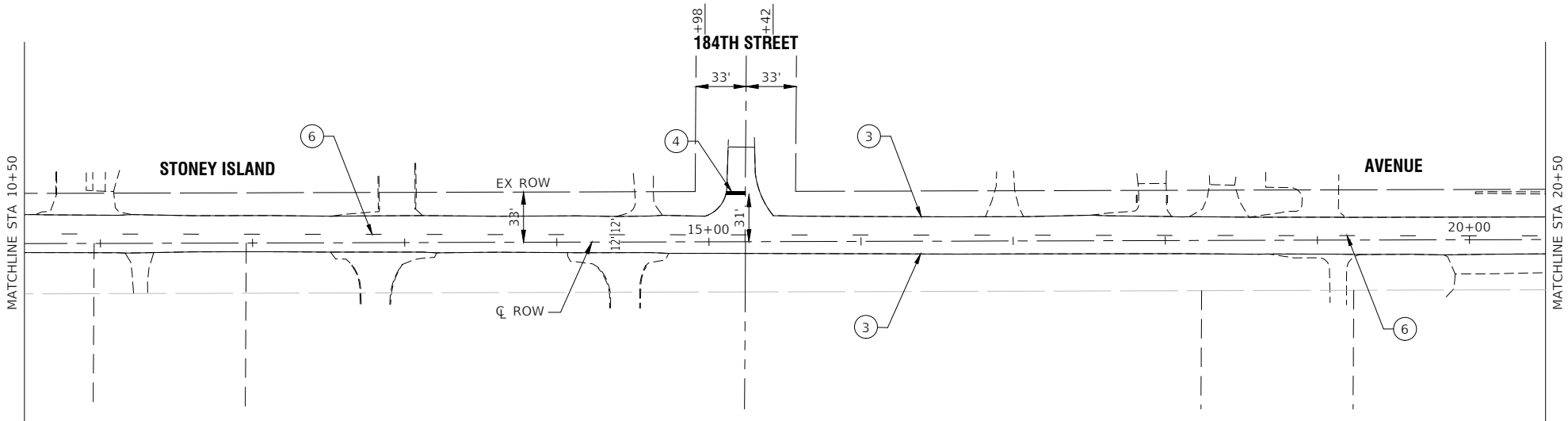


PAVEMENT MARKING LEGEND

- ① THERMOPLASTIC PAVEMENT MARKING - WHITE LETTERS & SYMBOLS
- ② THERMOPLASTIC PAVEMENT MARKING - LINE 4" DOUBLE YELLOW LINE (11" C-C)
- ③ THERMOPLASTIC PAVEMENT MARKING - LINE 4" WHITE LANE LINE
- ④ THERMOPLASTIC PAVEMENT MARKING - LINE 24" WHITE STOP BAR LINE
- ⑤ THERMOPLASTIC PAVEMENT MARKING - LINE 6" WHITE SKIP DASH (2' LINE-6' SPACE)
- ⑥ THERMOPLASTIC PAVEMENT MARKING - LINE 4" YELLOW SKIP DASH (10' LINE-30' SPACE)
- ⑦ THERMOPLASTIC PAVEMENT MARKING - LINE 12" YELLOW DIAGONAL LINE (45° ANGLE, 20' C-C)
- ⑧ THERMOPLASTIC PAVEMENT MARKING - LINE 6" WHITE CROSS-WALK (6' C-C OR AS DIMENSIONED)
- ⑨ THERMOPLASTIC PAVEMENT MARKING - LINE 6" WHITE LANE LINE

NOTES

1. SEE TC-13 DISTRICT ONE TYPICAL PAVEMENT MARKING FOR GUIDANCE.
2. ALL PAVEMENT MARKINGS SHALL BE THERMOPLASTIC UNLESS OTHERWISE SHOWN.



FILE NAME = 24R0421-PVMK-01 - P01

USER NAME =	DESIGNED — AL	REVISED —
	CHECKED — SDK	REVISED —
	DRAWN — DS	REVISED —
	CHECKED — AG	REVISED —
PLOT SCALE =		
PLOT DATE = 12-17-24		

STATE OF ILLINOIS
DEPARTMENT OF TRANSPORTATION

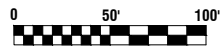
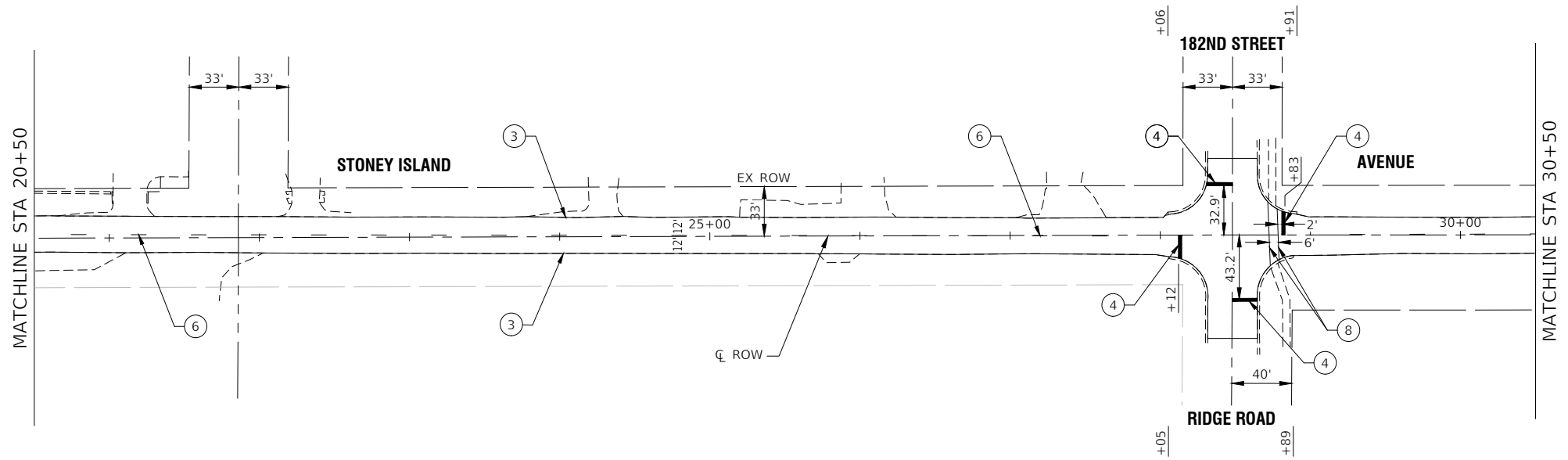
STONY ISLAND AVENUE
ROADWAY RESURFACING
PAVEMENT MARKING AND SIGNING

SCALE: 1"=50'

SHEET NO. 13 OF 21 SHEETS

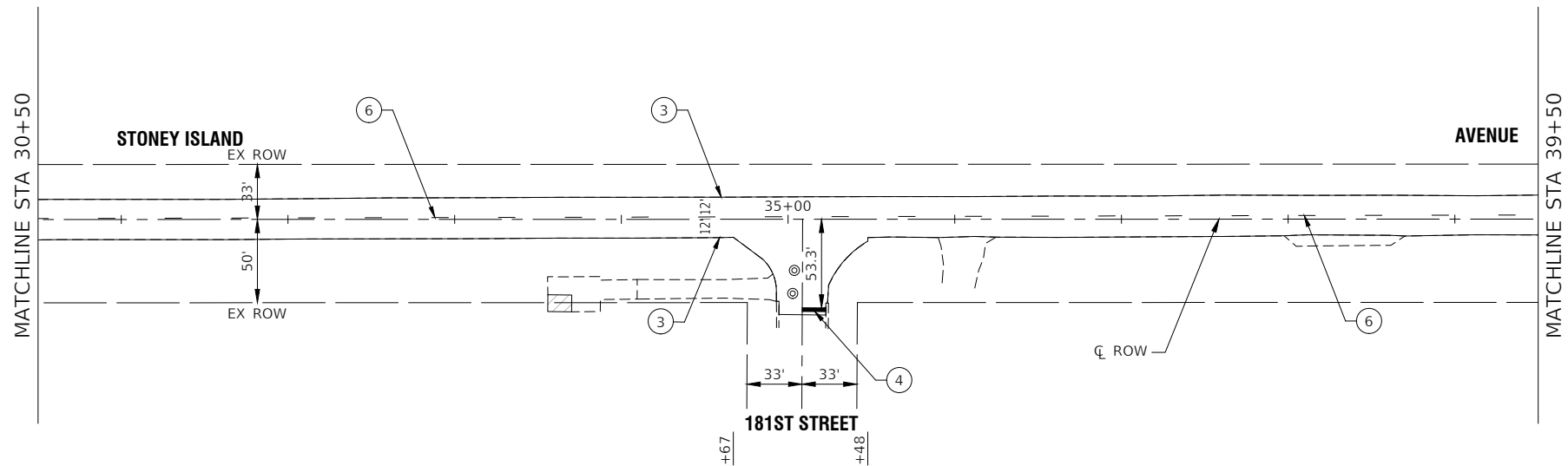
STA. TO STA.

F.A.U. RTE.	SECTION	COUNTY	TOTAL SHEETS	SHEET NO.
2933	24-00179-00-RS	COOK	21	13
CONTRACT NO. 61L27				
FED. ROAD DIST. NO. ---	ILLINOIS	FED. AID PROJECT	D74F(960)	



PAVEMENT MARKING LEGEND

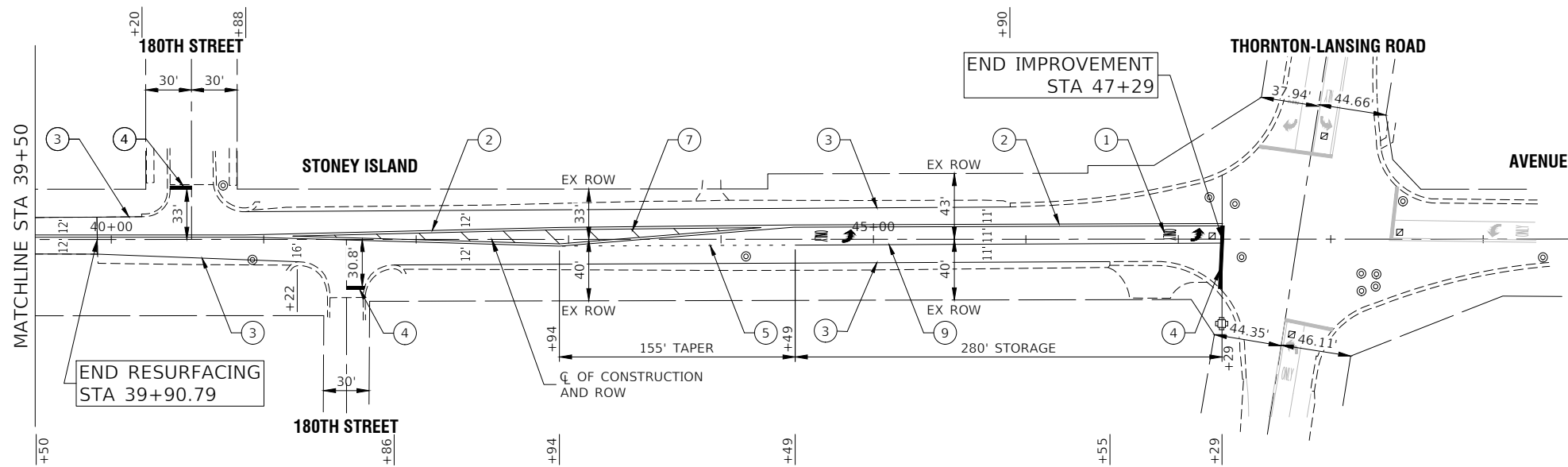
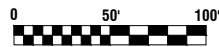
- ① THERMOPLASTIC PAVEMENT MARKING - WHITE LETTERS & SYMBOLS
- ② THERMOPLASTIC PAVEMENT MARKING - LINE 4" DOUBLE YELLOW LINE (11" C-C)
- ③ THERMOPLASTIC PAVEMENT MARKING - LINE 4" WHITE LANE LINE
- ④ THERMOPLASTIC PAVEMENT MARKING - LINE 24" WHITE STOP BAR LINE
- ⑤ THERMOPLASTIC PAVEMENT MARKING - LINE 6" WHITE SKIP DASH (2' LINE-6' SPACE)
- ⑥ THERMOPLASTIC PAVEMENT MARKING - LINE 4" YELLOW SKIP DASH (10' LINE-30' SPACE)
- ⑦ THERMOPLASTIC PAVEMENT MARKING - LINE 12" YELLOW DIAGONAL LINE (45° ANGLE, 20' C-C)
- ⑧ THERMOPLASTIC PAVEMENT MARKING - LINE 6" WHITE CROSS-WALK (6' C-C OR AS DIMENSIONED)
- ⑨ THERMOPLASTIC PAVEMENT MARKING - LINE 6" WHITE LANE LINE



NOTES

- 1. SEE TC-13 DISTRICT ONE TYPICAL PAVEMENT MARKING FOR GUIDANCE.
- 2. ALL PAVEMENT MARKINGS SHALL BE THERMOPLASTIC UNLESS OTHERWISE SHOWN.

FILE NAME = 24R0421-PVMK-01 - P02	USER NAME =	DESIGNED — AL	REVISED —	STATE OF ILLINOIS DEPARTMENT OF TRANSPORTATION	STONY ISLAND AVENUE ROADWAY RESURFACING PAVEMENT MARKING AND SIGNING					F.A.U RTE.	SECTION	COUNTY	TOTAL SHEETS	SHEET NO.
		CHECKED — SDK	REVISED —							2933	24-00179-00-RS	COOK	21	14
	PLOT SCALE =	DRAWN — DS	REVISED —							CONTRACT NO. 61L27				
	PLOT DATE = 12-17-24	CHECKED — AG	REVISED —		FED. ROAD DIST. NO. ---- ILLINOIS FED. AID PROJECT D74F(960)									
	SCALE: 1"=50'				SHEET NO. 14	OF 21	SHEETS	STA.	TO STA.					



PAVEMENT MARKING LEGEND

- ① THERMOPLASTIC PAVEMENT MARKING - WHITE LETTERS & SYMBOLS
- ② THERMOPLASTIC PAVEMENT MARKING - LINE 4" DOUBLE YELLOW LINE (11" C-C)
- ③ THERMOPLASTIC PAVEMENT MARKING - LINE 4" WHITE LANE LINE
- ④ THERMOPLASTIC PAVEMENT MARKING - LINE 24" WHITE STOP BAR LINE
- ⑤ THERMOPLASTIC PAVEMENT MARKING - LINE 6" WHITE SKIP DASH (2' LINE-6' SPACE)
- ⑥ THERMOPLASTIC PAVEMENT MARKING - LINE 4" YELLOW SKIP DASH (10' LINE-30' SPACE)
- ⑦ THERMOPLASTIC PAVEMENT MARKING - LINE 12" YELLOW DIAGONAL LINE (45° ANGLE, 20' C-C)
- ⑧ THERMOPLASTIC PAVEMENT MARKING - LINE 6" WHITE CROSS-WALK (6' C-C OR AS DIMENSIONED)
- ⑨ THERMOPLASTIC PAVEMENT MARKING - LINE 6" WHITE LANE LINE

NOTES

1. SEE TC-13 DISTRICT ONE TYPICAL PAVEMENT MARKING FOR GUIDANCE.
2. ALL PAVEMENT MARKINGS SHALL BE THERMOPLASTIC UNLESS OTHERWISE SHOWN.

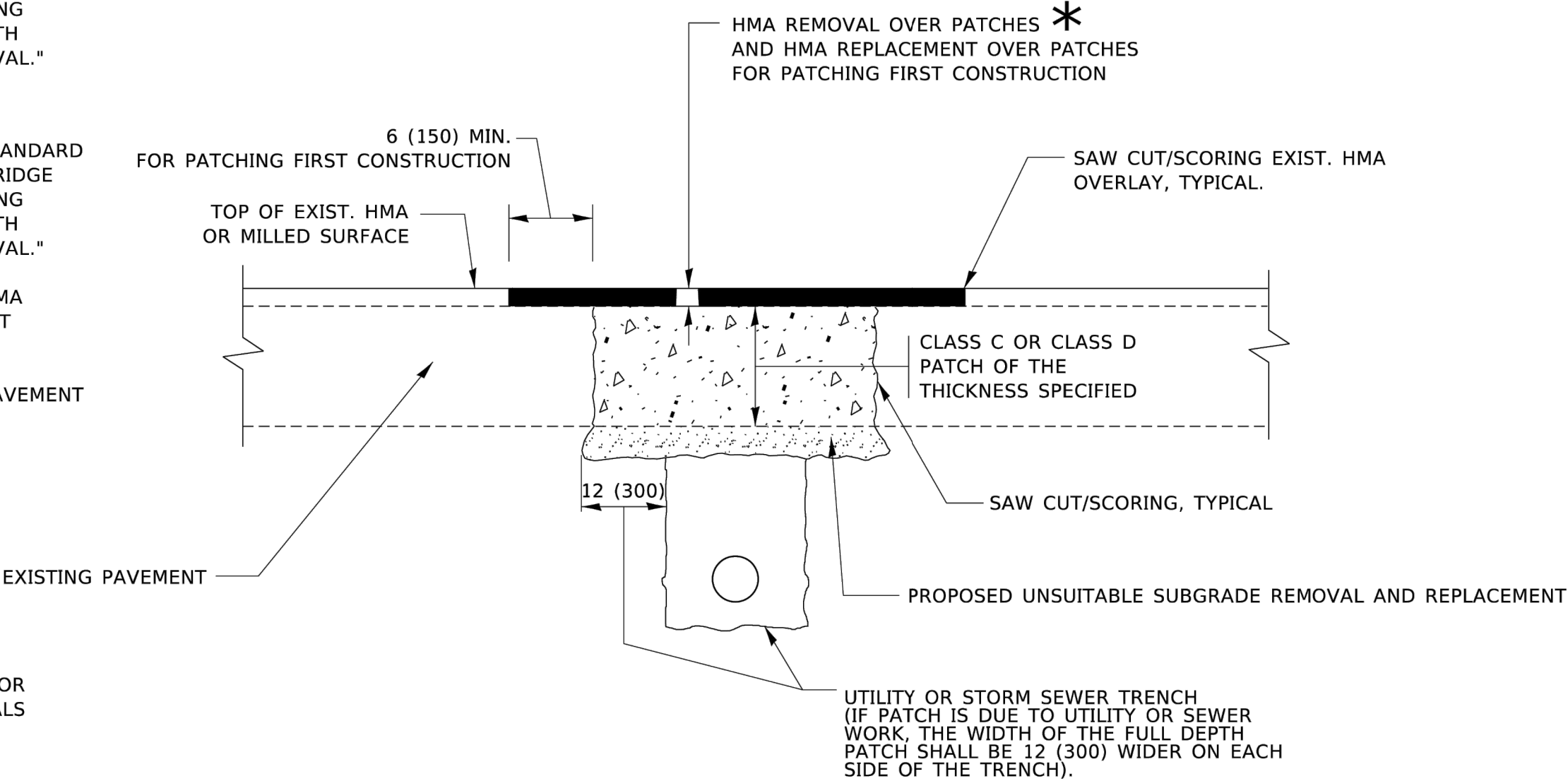
FILE NAME = 24R0421-PVMK-01 - P03	USER NAME =	DESIGNED — AL	REVISED —	STATE OF ILLINOIS DEPARTMENT OF TRANSPORTATION	STONY ISLAND AVENUE ROADWAY RESURFACING PAVEMENT MARKING AND SIGNING				F.A.U RTE.	SECTION	COUNTY	TOTAL SHEETS	SHEET NO.
		CHECKED — SDK	REVISED —						2933	24-00179-00-RS	COOK	21	15
	PLOT SCALE =	DRAWN — DS	REVISED —						CONTRACT NO. 61L27				
	PLOT DATE = 12-17-24	CHECKED — AG	REVISED —		FED. ROAD DIST. NO. ---- ILLINOIS FED. AID PROJECT D74F(960)								
						SCALE: 1"=50'	SHEET NO. 15 OF 21 SHEETS	STA.	TO STA.				

METHOD OF MEASUREMENT

REFER TO SECTION 442 OF THE STANDARD SPECIFICATIONS FOR ROAD AND BRIDGE CONSTRUCTION AND THE RECURRING SPECIAL PROVISION "PATCHING WITH HOT-MIX ASPHALT OVERLAY REMOVAL."

BASIS OF PAYMENT

- 1. REFER TO SECTION 442 OF THE STANDARD SPECIFICATIONS FOR ROAD AND BRIDGE CONSTRUCTION AND THE RECURRING SPECIAL PROVISION "PATCHING WITH HOT-MIX ASPHALT OVERLAY REMOVAL."
- 2. SAW CUT/SCORING OF EXISTING HMA OVERLAY IS INCLUDED IN THE COST OF PAVEMENT PATCHING.
- 3. SAW CUT/SCORING OF EXISTING PAVEMENT IS INCLUDED IN THE COST OF PAVEMENT PATCHING.



* SEE TYPICAL SECTIONS FOR THICKNESS AND MATERIALS

SEQUENCE OF CONSTRUCTION (PATCHING FIRST)

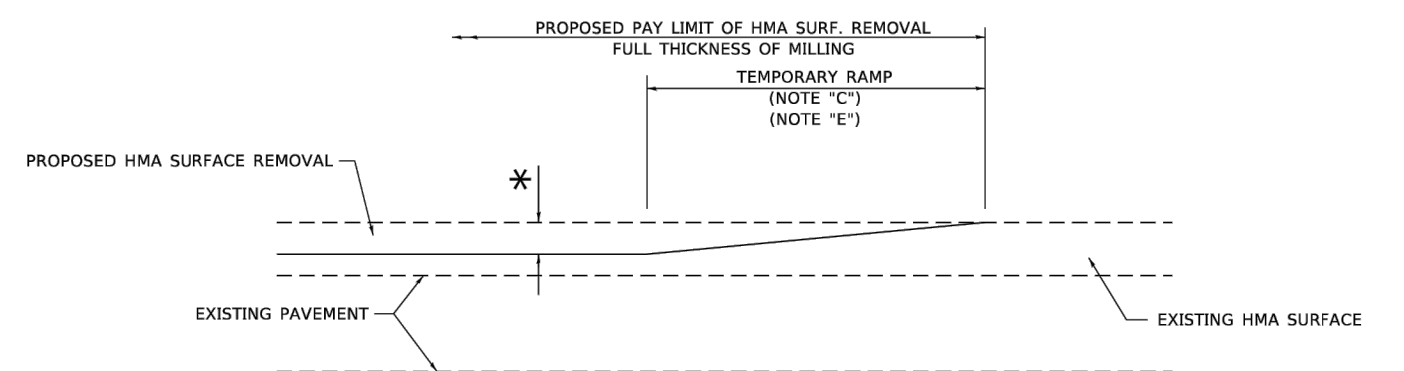
- 1. REMOVE THE EXISTING HMA MATERIAL OVER THE AREA TO BE PATCHED.
- 2. REMOVE AND REPLACE WITH CLASS C OR D PATCH.
- 3. REPLACE HMA MATERIAL OVER THE AREA TO BE PATCHED.

SEQUENCE OF CONSTRUCTION (MILLING FIRST)

- 1. MILL HMA FIRST IF THERE IS AT LEAST 4½ INCHES OR MORE OF HMA MATERIAL ON TOP OF THE EXISTING PAVEMENT OR IF THE PAVEMENT IS FULL DEPTH HMA. A MINIMUM OF 2 INCHES OF HMA MATERIAL SHALL BE IN PLACE AFTER MILLING.
- 2. REMOVE AND REPLACE WITH FULL DEPTH CLASS D PATCHES TO TOP OF MILLED SURFACE.

ALL DIMENSIONS ARE IN INCHES (MILLIMETERS) UNLESS OTHERWISE SHOWN.

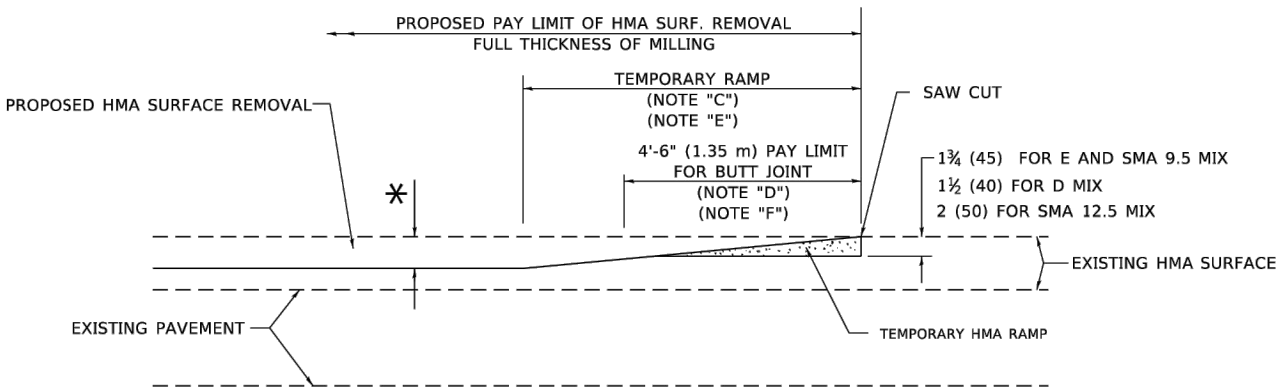
	USER NAME = Lawrence.DeManche	DESIGNED - R. SHAH	REVISED - R. BORO 01-01-07	STATE OF ILLINOIS DEPARTMENT OF TRANSPORTATION	PAVEMENT PATCHING FOR HMA SURFACED PAVEMENT					F.A.U RTE.	SECTION	COUNTY	TOTAL SHEETS	SHEET NO.
		DRAWN -	REVISED - R. BORO 09-04-07							2933	24-00179-00-RS	COOK	21	16
	PLOT SCALE = 100.0000 ' / in.	CHECKED -	REVISED - K. ENG 10-27-08		BD400-04 (BD-22)		CONTRACT NO. 61L27							
	PLOT DATE = 11/18/2022	DATE - 10-25-94	REVISED - K. SMITH 11-18-22		FED. ROAD DIST. NO. ---- ILLINOIS FED. AID PROJECT D74F(960)									
						SCALE: NONE	SHEET 1 OF 1 SHEETS	STA.	TO STA.					



MILLED TEMPORARY RAMP

(FOR BUTT JOINT AND HMA TAPER SEE DETAIL BELOW)

OPTION 1

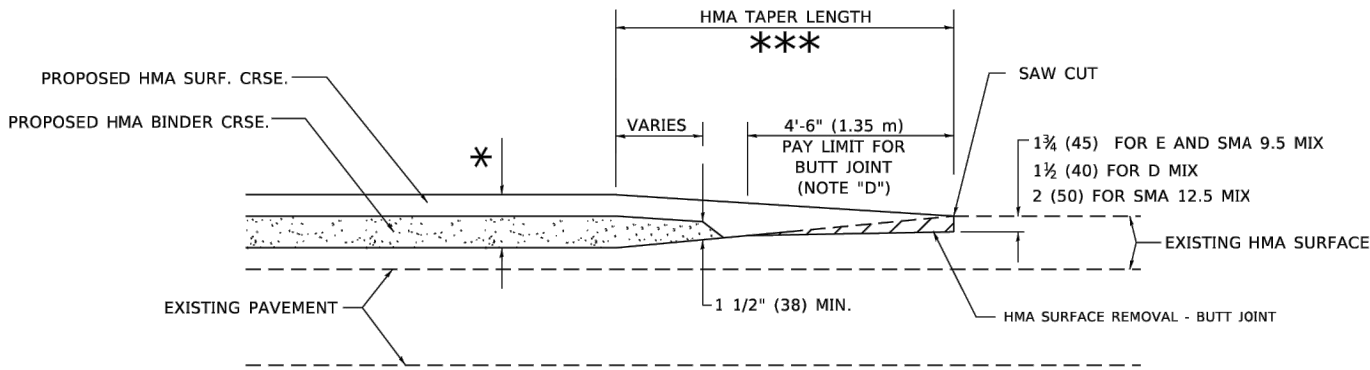


HMA CONSTRUCTED TEMPORARY RAMP

(FOR BUTT JOINT AND HMA TAPER SEE DETAIL BELOW)

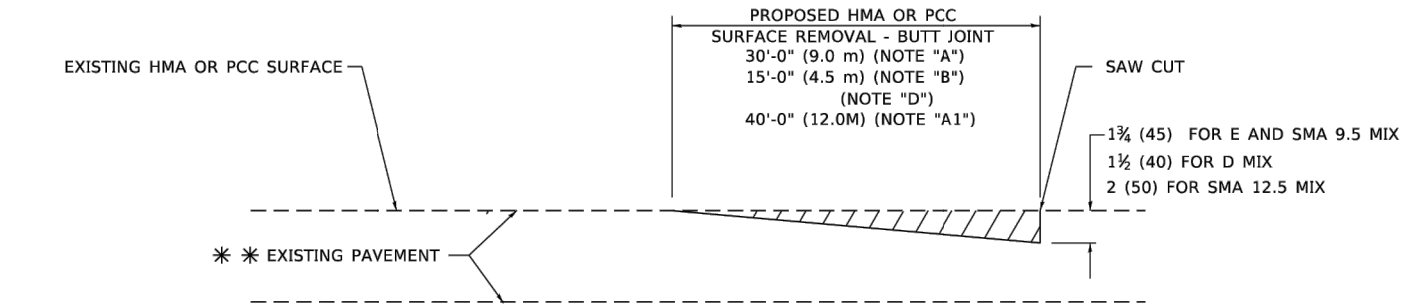
OPTION 2

TYPICAL TEMPORARY RAMP

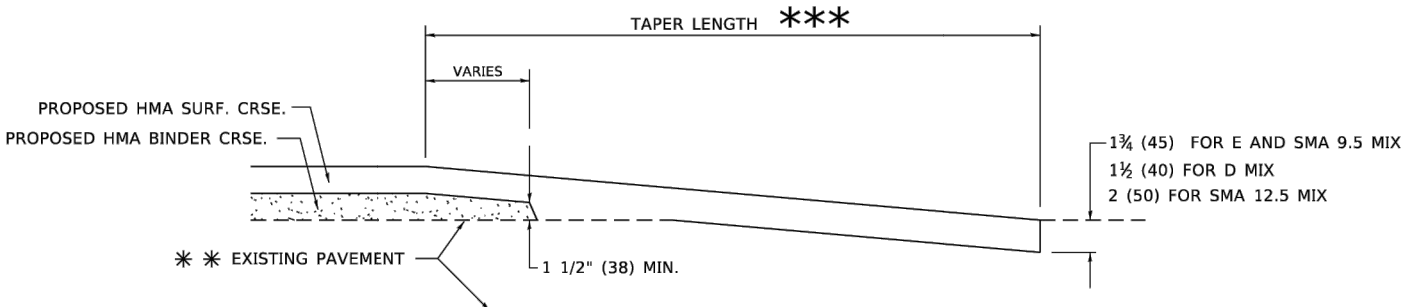


**BUTT JOINT AND
HMA TAPER**

**TYPICAL BUTT JOINT AND HMA TAPER
FOR MILLING AND RESURFACING**



BUTT JOINT DETAIL



HMA TAPER DETAIL

**TYPICAL BUTT JOINT AND HMA TAPER
FOR RESURFACING ONLY**

** PC CONCRETE, HMA OR HMA RESURFACED PAVEMENT.

GENERAL NOTES

- MAINLINE ARTERIAL ROADWAYS AND MAJOR SIDE ROADS.
- INTERSTATES.
- MINOR SIDE ROADS.
- THE TEMP. RAMP SHALL BE CONSTRUCTED IMMEDIATELY UPON REMOVAL OF THE EXISTING HMA SURFACE.
- THE BUTT JOINT SHALL BE CONSTRUCTED IMMEDIATELY PRIOR TO PLACING THE PROPOSED HMA COURSES.
- TAPER THE TEMP. RAMP AT A RATE OF 3' - 4" (1.02m) PER 1 INCH (25 mm) OF MILLING THICKNESS.
* SEE TYPICAL SECTIONS FOR MILLING THICKNESS.
- SEE ARTICLE 406.08 AND 406.14 OF THE STANDARD SPECIFICATIONS FOR "HMA AND/OR PCC SURFACE REMOVAL, BUTT JOINT".
*** 20'-0" (6.1 m) PER 1 (25) RESURFACING (NOTE "A")
10'-0" (3.0 m) PER 1 (25) RESURFACING (NOTE "B")

BASIS OF PAYMENT

- THE BUTT JOINT WILL BE PAID FOR AT THE CONTRACT UNIT PRICE PER SQUARE YARD (SQUARE METER) FOR "HOT-MIX ASPHALT SURFACE REMOVAL - BUTT JOINT" OR FOR "PORTLAND CEMENT CONCRETE SURFACE REMOVAL- BUTT JOINT".
- THE TEMPORARY RAMP AND SAW CUT SHALL BE INCLUDED IN THE UNIT COST FOR HMA OR PCC SURFACE REMOVAL-BUTT JOINT.

ALL DIMENSIONS ARE IN INCHES (MILLIMETERS) UNLESS OTHERWISE SHOWN.

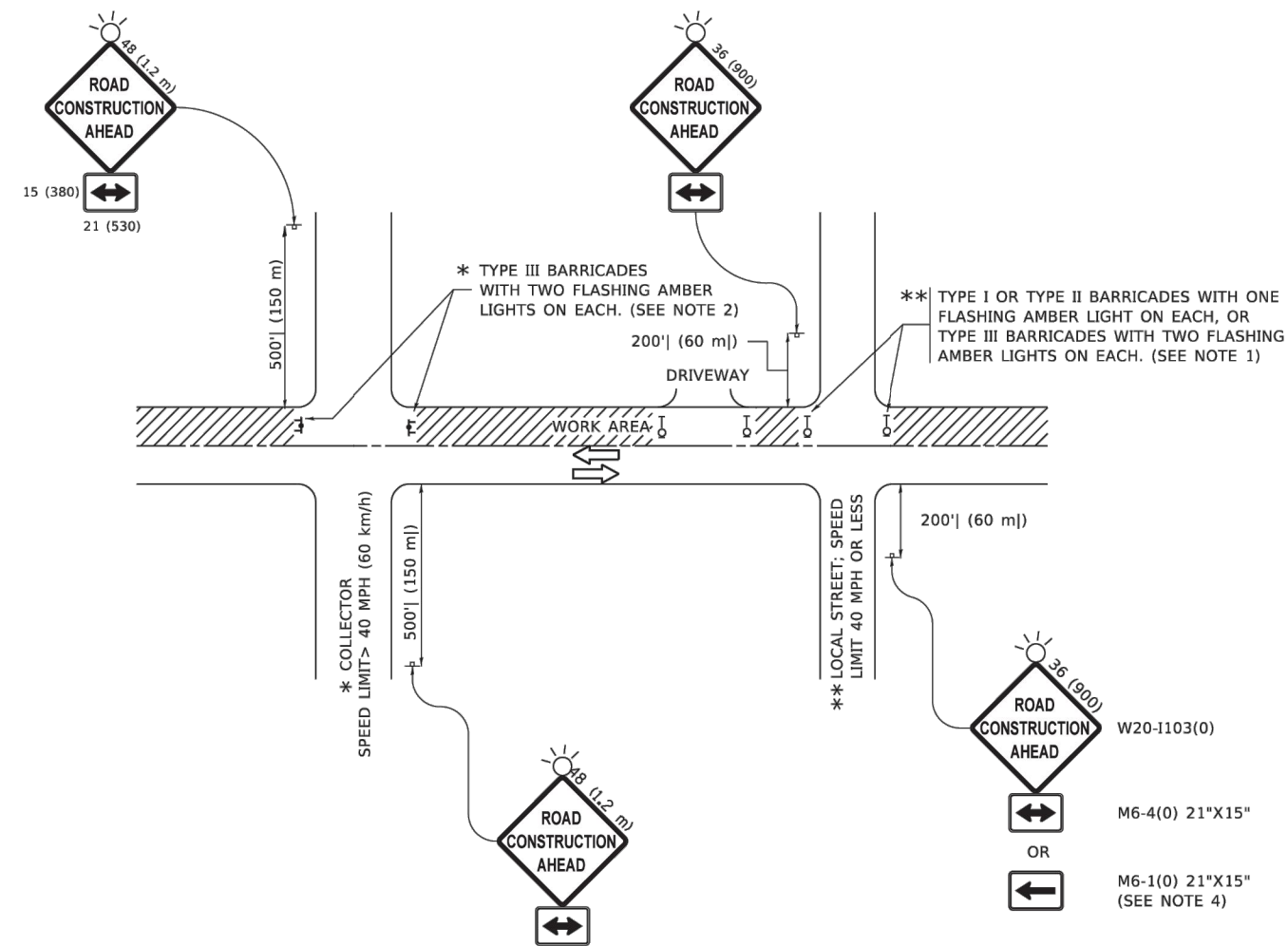
USER NAME = Lawrence.DeManche	DESIGNED - M. DE YONG	REVISED - A. ABBAS 03-21-97
	DRAWN -	REVISED - M. GOMEZ 04-06-01
PLOT SCALE = 100.0000 ' / in.	CHECKED -	REVISED - R. BORO 01-01-07
PLOT DATE = 11/18/2022	DATE - 06-13-90	REVISED - K. SMITH 11-18-22

STATE OF ILLINOIS
DEPARTMENT OF TRANSPORTATION

**BUTT JOINT AND
HMA TAPER DETAILS**

SCALE: NONE SHEET 1 OF 1 SHEETS STA. TO STA.

F.A.U RTE.	SECTION	COUNTY	TOTAL SHEETS	SHEET NO.
2933	24-00179-00-RS	COOK	21	17
BD400-05 BD-32		CONTRACT NO. 61L27		
FED. ROAD DIST. NO.	ILLINOIS	FED. AID PROJECT	D74F(960)	

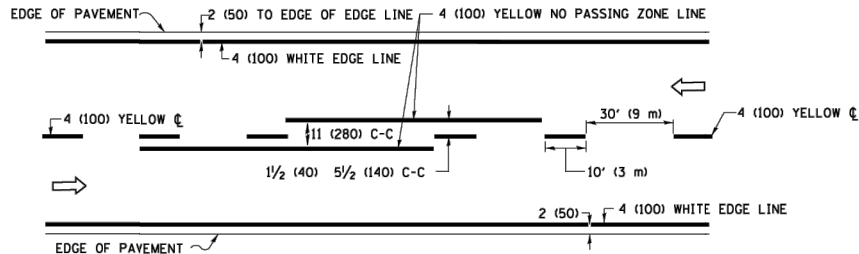


NOTES:

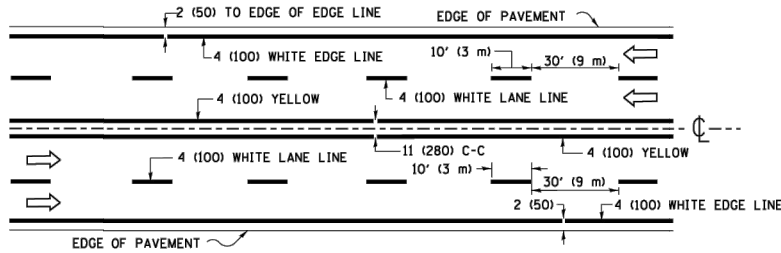
- SIDE ROAD WITH A SPEED LIMIT OF 40 MPH (60 km/h) OR LESS AS SHOWN ON THE DRAWING AND AS DIRECTED BY THE ENGINEER:
 - ONE "ROAD CONSTRUCTION AHEAD" SIGN 36 x 36 (900x900) WITH A FLASHER MOUNTED ON IT APPROXIMATELY 200' (60 m) IN ADVANCE OF THE MAIN ROUTE.
 - THE CLOSED PORTION OF THE MAIN ROUTE SHALL BE PROTECTED BY BLOCKING WITH TYPE I, TYPE II OR TYPE III BARRICADES, 1/3 OF THE CROSS SECTION OF THE CLOSED PORTION.
- SIDE ROAD WITH A SPEED LIMIT GREATER THAN 40 MPH (60 km/h) AS SHOWN ON THE DRAWING AND AS DIRECTED BY THE ENGINEER:
 - ONE "ROAD CONSTRUCTION AHEAD" SIGN 48 x 48 (1.2 m x 1.2 m) WITH A FLASHER MOUNTED ON IT APPROXIMATELY 500' (150 m) IN ADVANCE OF THE MAIN ROUTE.
 - THE CLOSED PORTION OF THE MAIN ROUTE SHALL BE PROTECTED BY BLOCKING WITH TYPE III BARRICADES, 1/2 OF THE CROSS SECTION OF THE CLOSED PORTION.
- CONES MAY BE SUBSTITUTED FOR BARRICADES OR DRUMS AT HALF THE SPACING DURING DAY OPERATIONS. CONES SHALL BE A MINIMUM OF 28 (710) IN HEIGHT.
- SIGNING AND THE WORK ZONE, A SINGLE HEADED ARROW (M6-1) SHALL BE USED IN LIEU OF THE DOUBLE HEADED ARROW (M6-4).
- WHEN WORK IS BEING PERFORMED ON A SIDE ROAD OR DRIVEWAY, FOLLOW THE APPLICABLE STANDARD(S). THE DIRECTIONAL ARROW (M6-1 OR M6-4) SHALL BE COVERED OR REMOVED WHEN NO LONGER CONSISTENT WITH THE TRAFFIC CONTROL SET-UP.
- ADVANCE WARNING SIGNS ARE TO BE OMITTED ON DRIVEWAYS UNLESS OTHERWISE SPECIFIED IN THE PLANS OR BY THE ENGINEER.
- THE TRAFFIC CONTROL AND PROTECTION FOR SIDE ROADS, INTERSECTIONS, AND DRIVEWAYS SHALL BE INCLUDED IN THE COST OF SPECIFIED TRAFFIC CONTROL STANDARDS OR ITEMS.

All dimensions are in inches (millimeters) unless otherwise shown.

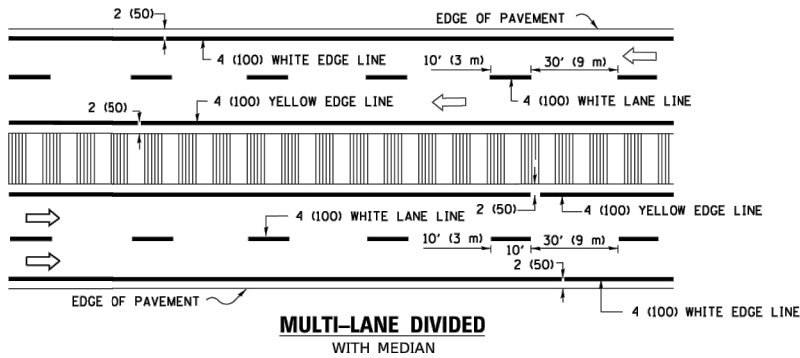
	USER NAME = Lawrence.DeManche	DESIGNED - L.H.A.	REVISED - T. RAMMACHER 01-06-00	STATE OF ILLINOIS DEPARTMENT OF TRANSPORTATION	TRAFFIC CONTROL AND PROTECTION FOR SIDE ROADS, INTERSECTIONS, AND DRIVEWAYS	SCALE: NONE	SHEET 1 OF 1 SHEETS	STA. TO STA.	F.A.U RTE.	SECTION	COUNTY	TOTAL SHEETS	SHEET NO.
		DRAWN -	REVISED - A. SCHUETZE 07-01-13						2933	24-00179-00-RS	COOK	21	18
	PLOT SCALE = 100.0000 ' / in.	CHECKED -	REVISED - A. SCHUETZE 09-15-16						TC-10		CONTRACT NO. 61L27		
	PLOT DATE = 5/3/2024	DATE - 06-89	REVISED - D. SENDERAK 05-03-24						FED. ROAD DIST. NO. ---- ILLINOIS FED. AID PROJECT D74F(960)				



2-LANE ROADWAY

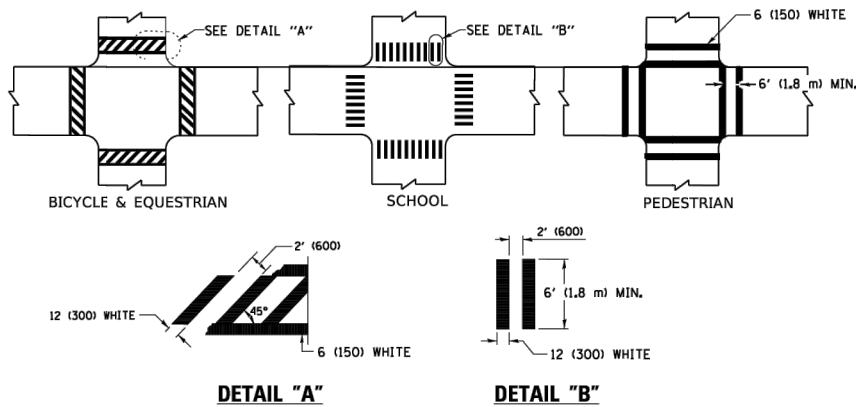


MULTI-LANE UNDIVIDED



MULTI-LANE DIVIDED WITH MEDIAN

TYPICAL LANE AND EDGE LINE MARKING

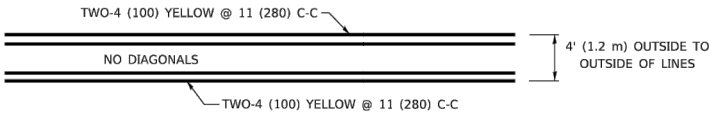


DETAIL "A"

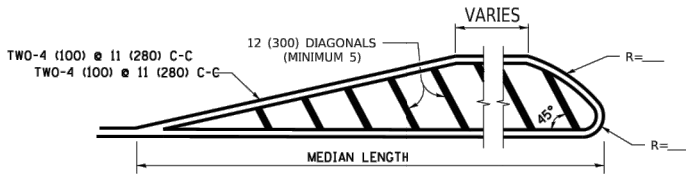
DETAIL "B"

TYPICAL CROSSWALK MARKING

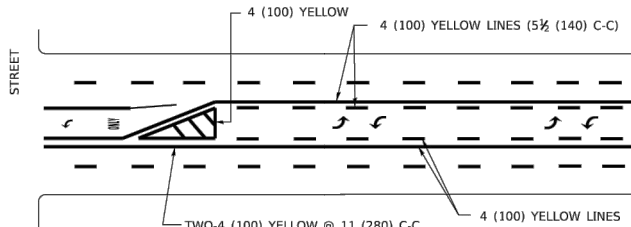
* MARKINGS SHALL BE INSTALLED PARALLEL TO THE CENTERLINE OF THE ROAD WHICH IT CROSSES



4' (1.2 m) WIDE MEDIANS ONLY

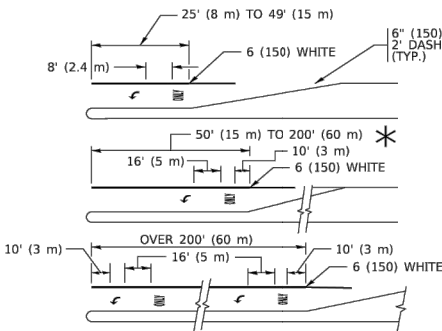


MEDIANS OVER 4' (1.2 m) WIDE



MEDIAN WITH TWO-WAY LEFT TURN LANE

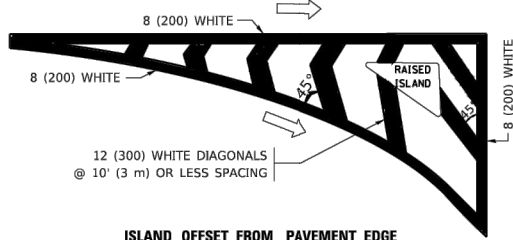
TYPICAL PAINTED MEDIAN MARKING



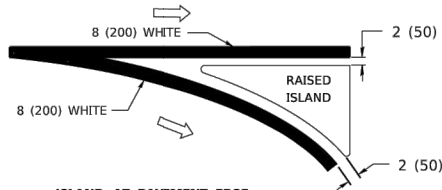
FULL SIZE LETTERS 8' (2.4 m) AND ARROWS SHALL BE USED.
AREA = 15.6 SQ. FT. (1.5 m²) ONLY AREA = 20.8 SQ. FT. (1.9 m²)
TURN LANES IN EXCESS OF 400' (120 m) IN LENGTH MAY HAVE AN ADDITIONAL SET OF ARROW - "ONLY" INSTALLED MIDWAY BETWEEN THE OTHER TWO SETS OF ARROW - "ONLY".

TYPICAL LEFT (OR RIGHT) TURN LANE

TYPICAL TURN LANE MARKING

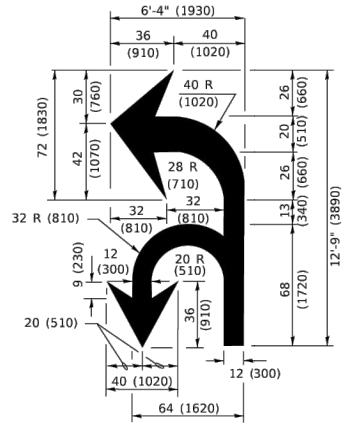


ISLAND OFFSET FROM PAVEMENT EDGE

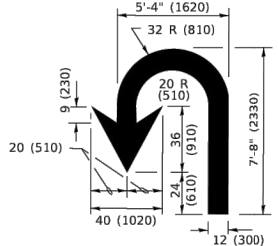


ISLAND AT PAVEMENT EDGE

TYPICAL ISLAND MARKING



COMBINATION LEFT AND U-TURN



U-TURN

LANE REDUCTION TRANSITION

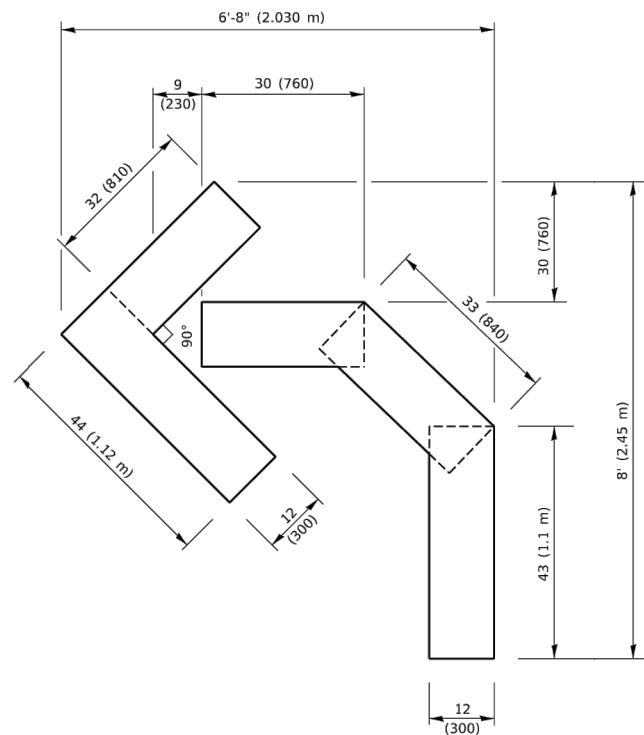
* LANE REDUCTION ARROWS REQUIRED AT SPEEDS OF 45 MPH OR GREATER OR WHEN SPECIFIED IN PLANS.

TYPE OF MARKING	WIDTH OF LINE	PATTERN	COLOR	SPACING / REMARKS
CENTERLINE ON 2 LANE PAVEMENT	4 (100)	SKIP-DASH	YELLOW	10' (3 m) LINE WITH 30' (9 m) SPACE
CENTERLINE ON MULTI-LANE UNDIVIDED PAVEMENT	2 @ 4 (100)	SOLID	YELLOW	11 (280) C-C
NO PASSING ZONE LINES: FOR ONE DIRECTION FOR BOTH DIRECTIONS	4 (100) 2 @ 4 (100)	SOLID SOLID	YELLOW YELLOW	5½ (140) C-C FROM SKIP-DASH CENTERLINE 11 (280) C-C OMIT SKIP-DASH CENTERLINE BETWEEN
LANE LINES	4 (100) 5 (125) ON FREEWAYS	SKIP-DASH SKIP-DASH	WHITE WHITE	10' (3 m) LINE WITH 30' (9 m) SPACE
DOTTED LINES (EXTENSIONS OF CENTER, LANE OR TURN LANE MARKINGS)	SAME AS LINE BEING EXTENDED	SKIP-DASH	SAME AS LINE BEING EXTENDED	2' (600) LINE WITH 6' (1.8 m) SPACE
EDGE LINES	4 (100)	SOLID	YELLOW-LEFT WHITE-RIGHT	OUTLINE MEDIANS IN YELLOW
TURN LANE MARKINGS	6 (150) LINE: FULL SIZE LETTERS & SYMBOLS (8' (2.4m))	SOLID	WHITE	SEE TYPICAL TURN LANE MARKING DETAIL
TWO WAY LEFT TURN MARKING	2 @ 4 (100) EACH DIRECTION 8' (2.4m) LEFT ARROW	SKIP-DASH AND SOLID IN PAIRS	YELLOW WHITE	10' (3 m) LINE WITH 30' (9 m) SPACE FOR SKIP-DASH; 5½ (140) C-C BETWEEN SOLID LINE AND SKIP-DASH LINE SEE TYPICAL TWO-WAY LEFT TURN MARKING DETAIL
CROSSWALK LINES (PEDESTRIAN) A. DIAGONALS (BIKE & EQUESTRIAN) B. LONGITUDINAL BARS (SCHOOL)	2 @ 6 (150) 12 (300) @ 45° 12 (300) @ 90°	SOLID SOLID SOLID	WHITE WHITE WHITE	NOT LESS THAN 6' (1.8 m) APART 2' (600) APART 2' (600) APART SEE TYPICAL CROSSWALK MARKING DETAILS.
STOP LINES	24 (600)	SOLID	WHITE	PLACE 4' (1.2 m) IN ADVANCE OF AND PARALLEL TO CROSSWALK, IF PRESENT. OTHERWISE, PLACE AT DESIRED STOPPING POINT. PARALLEL TO CROSSROAD CENTERLINE, WHERE POSSIBLE
PAINTED MEDIANS	2 @ 4 (100) WITH 12 (300) DIAGONALS @ 45° NO DIAGONALS USED FOR 4' (1.2 m) WIDE MEDIANS	SOLID	YELLOW: TWO WAY TRAFFIC WHITE: ONE WAY TRAFFIC	11 (280) C-C FOR THE DOUBLE LINE SEE TYPICAL PAINTED MEDIAN MARKING.
GORE MARKING AND CHANNELIZING LINES	8 (200) WITH 12 (300) DIAGONALS @ 45°	SOLID	WHITE	DIAGONALS: 15' (4.5 m) C-C (LESS THAN 30MPH (50 km/h)) 20' (6 m) C-C 30MPH (50 km/h) TO 45MPH (70 km/h) 30' (9 m) C-C (OVER 45MPH (70 km/h))
RAILROAD CROSSING	24 (600) TRANSVERSE LINES: "RR" 15 6' (1.8 m) LETTERS; 16 (400) LINE FOR "X"	SOLID	WHITE	SEE STATE STANDARD 780001 AREA OF: "R"=3.6 SQ. FT. (0.33 m ²) EACH "X"=54.0 SQ. FT. (5.0 m ²)
SHOULDER DIAGONALS (REQUIRED FOR SHOULDERS ≥ 8')	12 (300) @ 45°	SOLID	WHITE - RIGHT YELLOW - LEFT	50' (15 m) C-C (LESS THAN 30MPH (50 km/h)) 75' (25 m) C-C (30 MPH (50 km/h) TO 45MPH (70 km/h)) 150' (45 m) C-C (OVER 45MPH (70 km/h))
U TURN ARROW	SEE DETAIL	SOLID	WHITE	16.3 SF
2 ARROW COMBINATION LEFT AND U TURN	SEE DETAIL	SOLID	WHITE	30.4 SF

FOR FURTHER DETAILS ON PAVEMENT MARKING REFER TO STANDARD SPECIFICATIONS FOR ROAD AND BRIDGE CONSTRUCTION AND STATE STANDARD 780001.

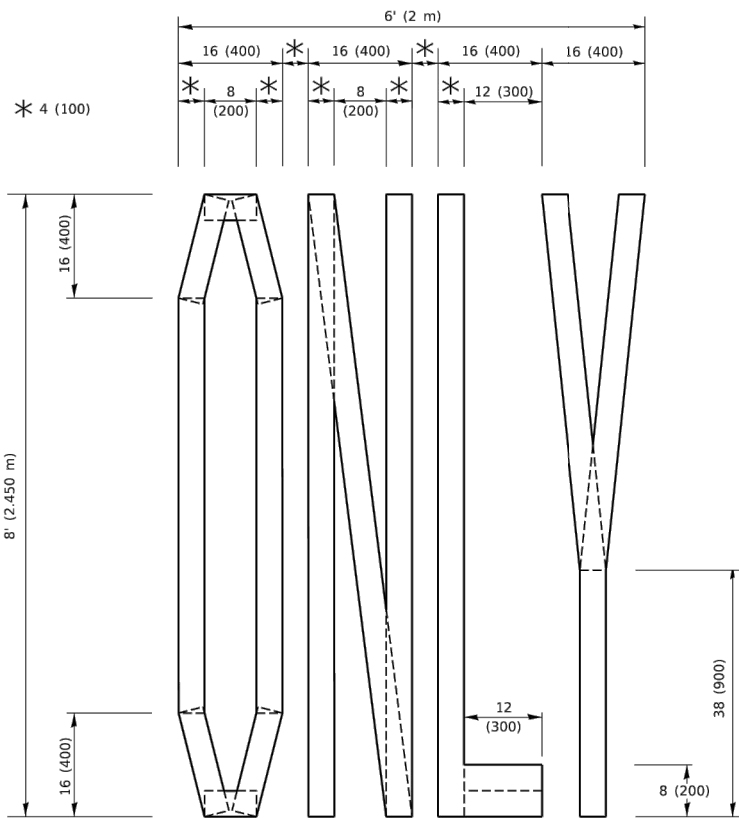
All dimensions are in inches (millimeters) unless otherwise shown.

	USER NAME = footemj	DESIGNED - EVERS	REVISED - C. JUCIUS 09-09-09	STATE OF ILLINOIS DEPARTMENT OF TRANSPORTATION	DISTRICT ONE TYPICAL PAVEMENT MARKINGS				F.A.U RTE.	SECTION		COUNTY	TOTAL SHEETS	SHEET NO.
		DRAWN -	REVISED - C. JUCIUS 07-01-13						2933	24-00179-00-RS		COOK	21	19
	PLOT SCALE = 50.0000 ' / in.	CHECKED -	REVISED - C. JUCIUS 12-21-15						TC-13					CONTRACT NO. 61L27
	PLOT DATE = 3/4/2019	DATE - 03-19-90	REVISED - C. JUCIUS 04-12-16		SCALE: NONE	SHEET 1	OF 2	SHEETS	STA.	TO STA.		FED. ROAD DIST. NO. ----	ILLINOIS	FED. AID PROJECT



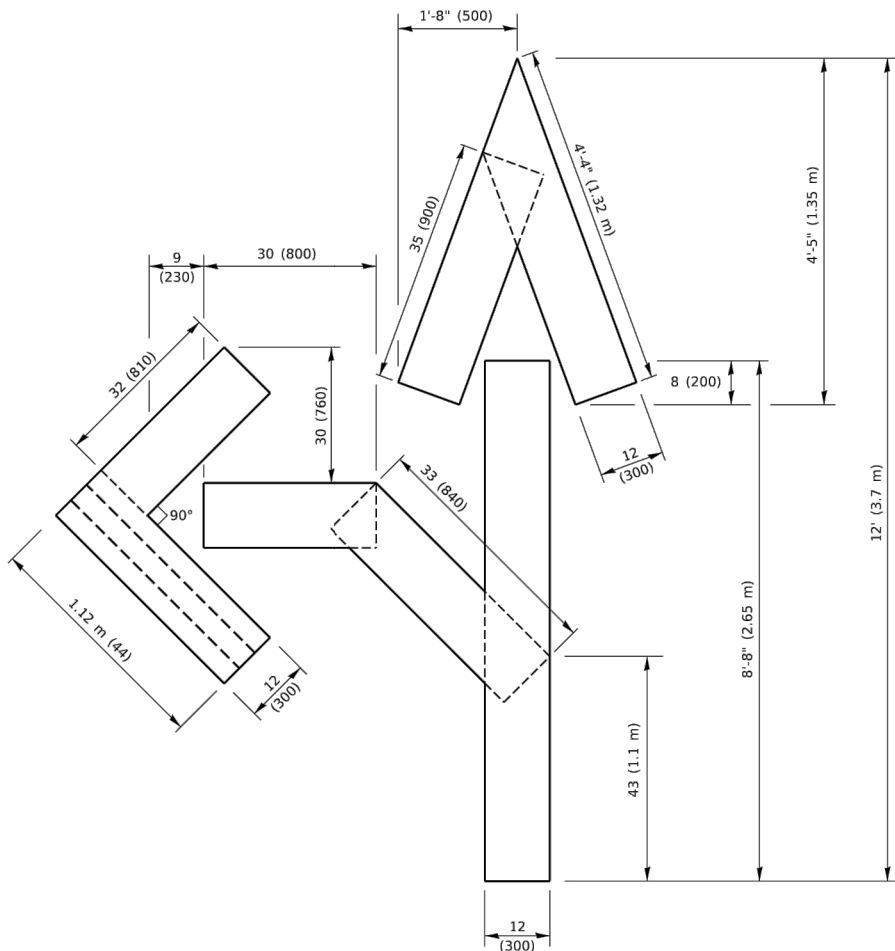
QUANTITY

4 (100) LINE = 45.5 ft. (13.9 m)
15.2 sq. ft. (1.41 sq. m)



QUANTITY

4 (100) LINE = 64.1 ft. (19.5 m)
21.4 sq. ft. (1.99 sq. m)

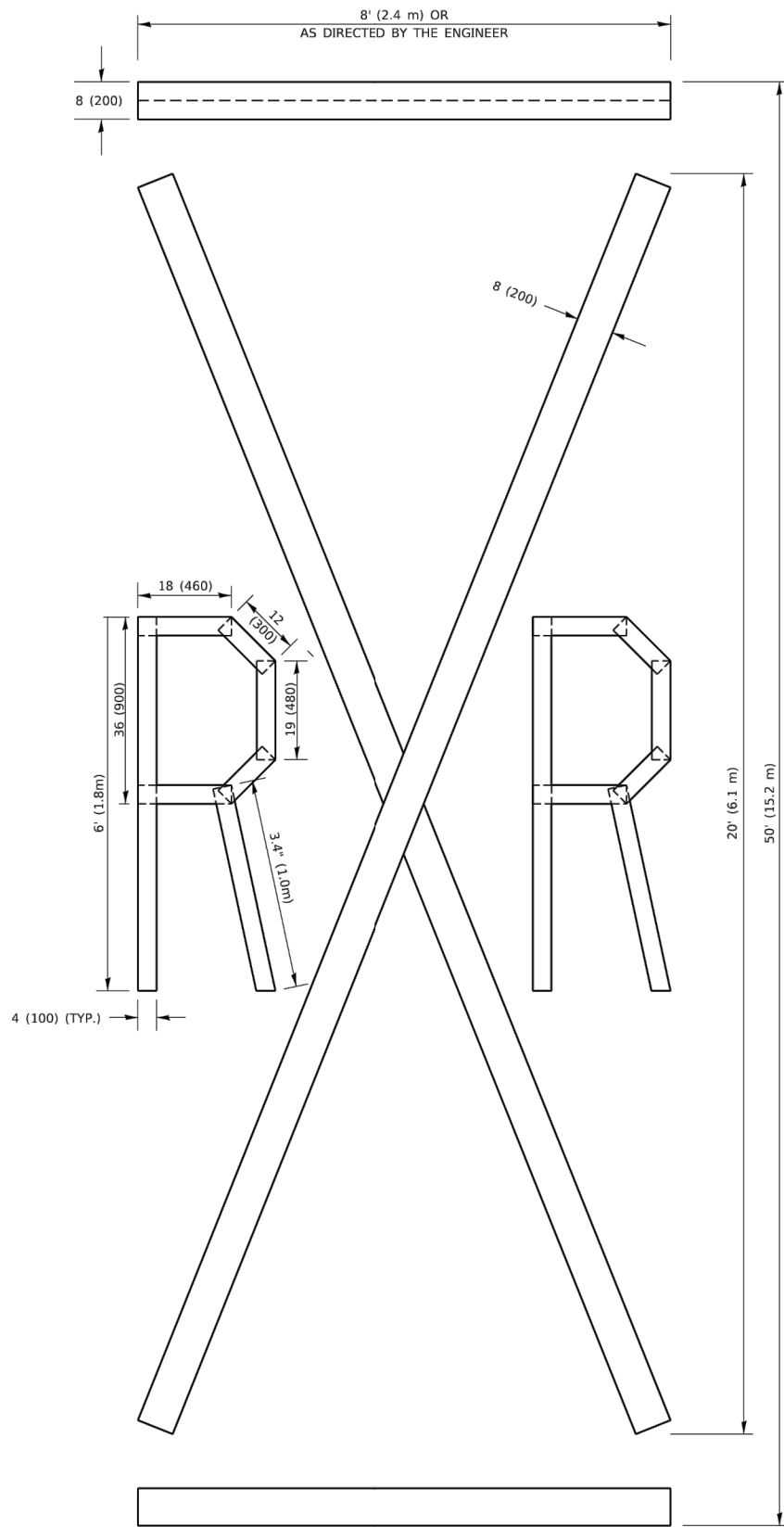


QUANTITY

4 (100) LINE = 82.5 ft. (25.1 m)
27.5 sq. ft. (2.53 sq. m)

NOTE:

ALL QUANTITIES OF PLACEMENT ARE REPRESENTED IN LINEAR FEET OF 4" LINES TO MATCH THE 4" TEMPORARY TAPE PAY ITEM AND REPRESENTS THE TOTAL QUANTITY OF 4" TAPE REQUIRED.

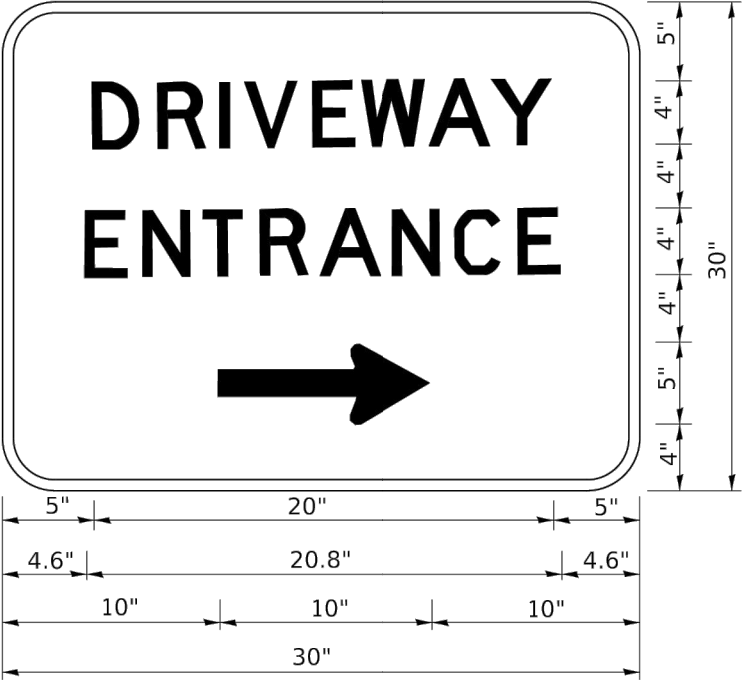


QUANTITY

4 (100) LINE = 225.9 ft. (68.9 m)
75.3 sq. ft. (6.99 sq. m)

All dimensions are in inches (millimeters) unless otherwise shown.

	USER NAME = footemj	DESIGNED -	REVISED - T. RAMMACHER 03-02-98	STATE OF ILLINOIS DEPARTMENT OF TRANSPORTATION	SHORT TERM PAVEMENT MARKING LETTERS AND SYMBOLS				F.A.U RTE.	SECTION	COUNTY	TOTAL SHEETS	SHEET NO.
	DRAWN -	DRAWN -	REVISED - E. GOMEZ 08-28-00						2933	24-00179-00-RS	COOK	21	20
	PLOT SCALE = 50.0068 ' / in.	CHECKED -	REVISED - E. GOMEZ 08-28-00		TC-16				CONTRACT NO. 61L27				
	PLOT DATE = 3/4/2019	DATE - 09-18-94	REVISED - A. SCHUETZE 09-15-16		SCALE: NONE	SHEET 1	OF 1	SHEETS	STA.	TO STA.	FED. ROAD DIST. NO. --- ILLINOIS FED. AID PROJECT D74F(960)		



3.0" RADIUS, 0.5" BORDER, WHITE ON GREEN; REFLECTORIZED
"DRIVEWAY" D; "ENTRANCE" D; STANDARD ARROW CUSTOM 12.0" x 5.0"

- NOTES:
- 1. HALF OF THE SIGNS WILL REQUIRE A LEFT HAND FACING ARROW.
 - 2. TWO SIGNS SHALL BE USED AT EACH COMMERCIAL ENTRANCE
PLACED BACK-TO-BACK: ONE WITH A RIGHT HAND ARROW (SHOWN)
SHALL BE PLACED ON THE NEAR RIGHT SIDE THE DRIVEWAY
AND ONE WITH A LEFT HAND ARROW SHALL BE PLACED ON THE
FAR LEFT SIDE OF THE DRIVEWAY.
 - 3. SIGNS TO BE PAID FOR AS ITEM "TEMPORARY INFORMATION SIGNING".