

21

FOR INDEX OF SHEETS, SEE SHEET NO. 2

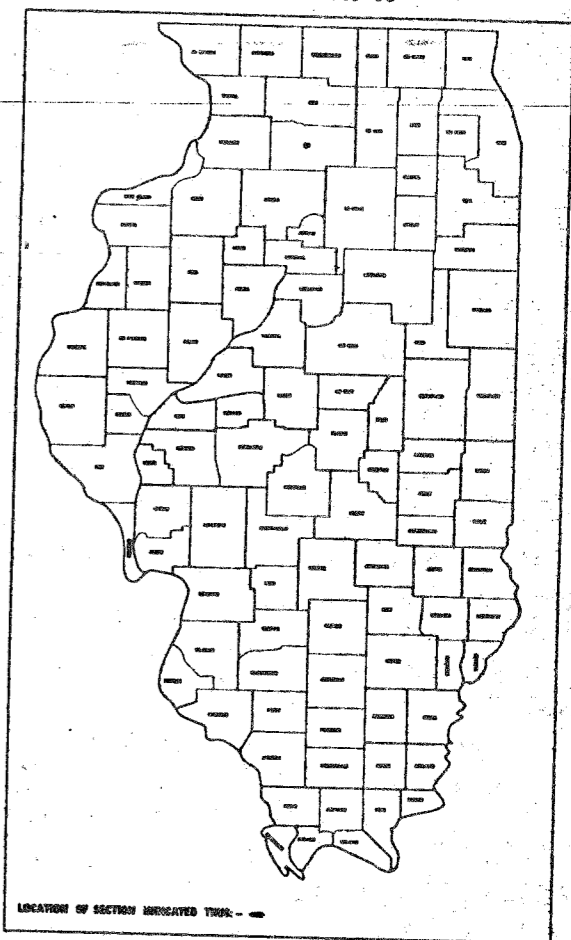
STATE OF ILLINOIS
DEPARTMENT OF TRANSPORTATION
DIVISION OF HIGHWAYS

PLANS FOR PROPOSED
FEDERAL AID HIGHWAY

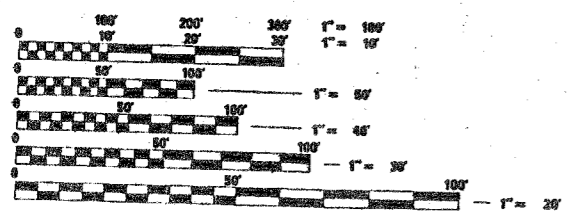
F.A.I. 94 (I-94 BISHOP FORD EXPRESSWAY)
OVER LITTLE CALUMET RIVER
S.N. 016-0159, 016-0158
SECTION: 42B-11-1-3
BRIDGE INSPECTION PLATFORMS
COOK COUNTY
C-91-143-98

F.A.I.	SECTION	COUNTY	TOTAL SHEET
94	42B-11-1-3	COOK	10
			1

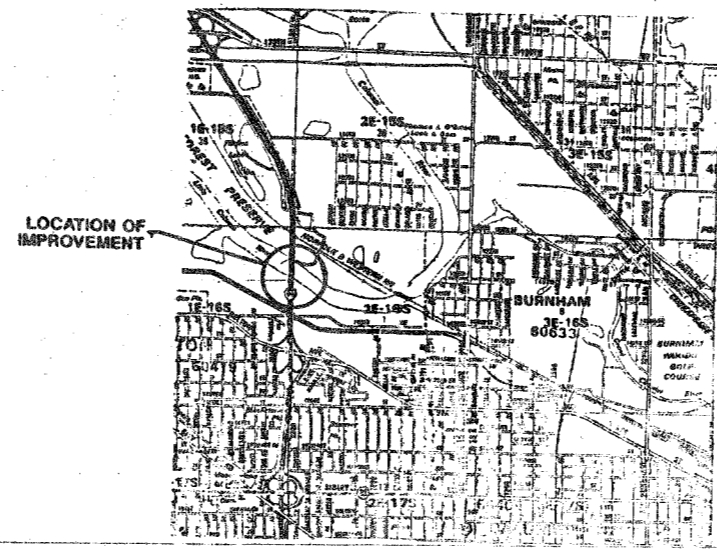
D-91-143-98



THIS IMPROVEMENT IS LOCATED IN
THE CITY OF CALUMET CITY



FULL SIZE PLANS HAVE BEEN PREPARED USING STANDARD
ENGINEERING SCALES. REDUCED SIZED PLANS WILL NOT
CONFORM TO STANDARD SCALES. IN MAKING MEASUREMENTS
ON REDUCED PLANS, THE ABOVE SCALES MAY BE USED.



STATE OF ILLINOIS
DEPARTMENT OF TRANSPORTATION
DIVISION OF HIGHWAYS

SUBMITTED October 21, 1998

EXAMINED John L. Rose

PASSED December 4, 1998

APPROVED December 4, 1998

PRINTED BY AUTHORITY OF THE
STATE OF ILLINOIS

FOR UTILITY INFORMATION
CALL J.U.L.I.E. 1-800-892-0123

DISTRICT ONE - BUREAU OF MAINTENANCE, K. ANTONSON
MAINTENANCE DESIGN ENGINEER, B. EPINO / J. COWLEY (847) 708-4757

CONTRACT NO. 60579

F.S. NO.	SECTION	COUNTY	TOTAL SHEETS	SHEET NO.
84	42B-11-3	COOK	10	2
STA		TO STA		
FED. AID DIST. NO. 7		ILLINOIS	FED. AID PROJECT	

INDEX OF SHEETS

1. COVER SHEET
2. INDEX OF SHEETS
STATE STANDARDS
GENERAL NOTES
3. SUMMARY OF QUANTITIES
4. GENERAL PLAN & ELEVATION
5. MONORAIL BEAM SUPPORT & DETAILS
6. PLATFORM & DETAILS
7. PLATFORM ELEVATIONS
8. DIST ONE FREEWAY STANDARD ONE LANE CLOSURE
9. DIST ONE FREEWAY STANDARD TWO LANE CLOSURE
10. TRAFFIC CONTROL DETAILS FOR FREEWAY SHOULDER CLOSURES PARTIAL RAMP CLOSURES

GENERAL NOTES

1. BEFORE STARTING ANY EXCAVATION, THE CONTRACTOR SHALL CALL "J.U.L.I.E." AT (800)892-0123 FOR FIELD LOCATIONS OF BURIED ELECTRIC, TELEPHONE AND GAS UTILITIES. (48 HOUR NOTIFICATION IS REQUIRED).
2. THE CONTRACTOR SHALL COORDINATE CONSTRUCTION ACTIVITIES WITH UTILITY COMPANIES AND THE CITY OF CHICAGO.
3. THE CONTRACTOR WILL NOT BE ALLOWED TO SET UP A YARD OR FIELD OFFICE ON STATE PROPERTY WITHOUT WRITTEN PERMISSION FROM THE DEPARTMENT.
4. **BARRICADES:** THE CONTRACTOR SHALL PROVIDE AND INSTALL TWO (2) WEIGHTED SAND BAGS ON EACH TYPE I OR TYPE II BARRICADE USED. (ONE (1) WEIGHTED SAND BAG ACROSS EACH BOTTOM RAIL).
5. IT SHALL BE THE CONTRACTOR'S RESPONSIBILITY TO VERIFY ALL DIMENSIONS AND CONDITIONS EXISTING IN THE FIELD PRIOR TO CONSTRUCTION AND ORDERING OF MATERIALS.
6. THE CONTRACTOR SHALL CONTACT THE DISTRICT ONE TRAFFIC CONTROL SUPERVISOR AT (847)705-4155 A MINIMUM OF 72 HOURS IN ADVANCE OF BEGINNING WORK.
7. THE CONTRACTOR SHALL BE REQUIRED TO PROVIDE ACCESS TO ABUTTING PROPERTY AT ALL TIMES DURING THE CONSTRUCTION OF THIS PROJECT.

STATE STANDARDS

702001

REVISIONS	
NAME	DATE

ILLINOIS DEPARTMENT OF TRANSPORTATION

INDEX OF SHEETS

STATE STANDARDS

GENERAL NOTES

SCALE: VERT. _____
 HORIZ. _____

DATE _____

DRAWN BY _____
 DESIGNED BY _____
 CHECKED BY _____

S. E. ENGINEERING GROUP

FILE NO.	SECTION	COUNTY	TOTAL SHEETS	SHEET NO.
94	42B-11-3	COOK	10	2
STA		TO STA		
FED. ROAD DIST. NO. 7		ILLINOIS	FED. AID PROJECT	

INDEX OF SHEETS

1. COVER SHEET
2. INDEX OF SHEETS
STATE STANDARDS
GENERAL NOTES
3. SUMMARY OF QUANTITIES
4. GENERAL PLAN & ELEVATION
5. MONORAIL BEAM SUPPORT & DETAILS
6. PLATFORM & DETAILS
7. PLATFORM ELEVATIONS
8. DIST ONE FREEWAY STANDARD ONE LANE CLOSURE
9. DIST ONE FREEWAY STANDARD TWO LANE CLOSURE
10. TRAFFIC CONTROL DETAILS FOR FREEWAY SHOULDER CLOSURES PARTIAL RAMP CLOSURES

GENERAL NOTES

1. BEFORE STARTING ANY EXCAVATION, THE CONTRACTOR SHALL CALL "J.U.L.I.E." AT (800)892-0123 FOR FIELD LOCATIONS OF BURIED ELECTRIC, TELEPHONE AND GAS UTILITIES. (48 HOUR NOTIFICATION IS REQUIRED).
2. THE CONTRACTOR SHALL COORDINATE CONSTRUCTION ACTIVITIES WITH UTILITY COMPANIES AND THE CITY OF CHICAGO.
3. THE CONTRACTOR WILL NOT BE ALLOWED TO SET UP A YARD OR FIELD OFFICE ON STATE PROPERTY WITHOUT WRITTEN PERMISSION FROM THE DEPARTMENT.
4. BARRICADES: THE CONTRACTOR SHALL PROVIDE AND INSTALL TWO (2) WEIGHTED SAND BAGS ON EACH TYPE I OR TYPE II BARRICADE USED. (ONE (1) WEIGHTED SAND BAG ACROSS EACH BOTTOM RAIL).
5. IT SHALL BE THE CONTRACTOR'S RESPONSIBILITY TO VERIFY ALL DIMENSIONS AND CONDITIONS EXISTING IN THE FIELD PRIOR TO CONSTRUCTION AND ORDERING OF MATERIALS.
6. THE CONTRACTOR SHALL CONTACT THE DISTRICT ONE TRAFFIC CONTROL SUPERVISOR AT (847)705-4155 A MINIMUM OF 72 HOURS IN ADVANCE OF BEGINNING WORK.
7. THE CONTRACTOR SHALL BE REQUIRED TO PROVIDE ACCESS TO ABUTTING PROPERTY AT ALL TIMES DURING THE CONSTRUCTION OF THIS PROJECT.

STATE STANDARDS

702001

REVISIONS	
NAME	DATE

ILLINOIS DEPARTMENT OF TRANSPORTATION

INDEX OF SHEETS STATE STANDARDS GENERAL NOTES

SCALE: VERT.
HORIZ.
DATE

DRAWN BY
DESIGNED BY
CHECKED BY

SUMMARY OF QUANTITIES

URBAN
100% STATE
SETY-2A

IAI	IIIS	CODE NO.	ITIP	ITEM	UNIT	TOTAL QUANTITY	10% - DISB	0% - DISB
X0321800	101			BRIDGE INSPECTION PLATFORM	L. SUM	1	0.5	0.5
X0321801	101			MONORAIL BEAMS	L. SUM	1	0.5	0.5
X7011015	101			TRAFFIC CONTROL AND PROTECTION (EXPRESSWAYS)	L. SUM	1	0.5	0.5
87100100	1			MORPHIZATION	L. SUM	1	0.5	0.5

\$ 114,555.⁰⁰
\$ 217,493.⁰⁰

ILLINOIS DEPARTMENT OF TRANSPORTATION

SUMMARY OF QUANTITIES

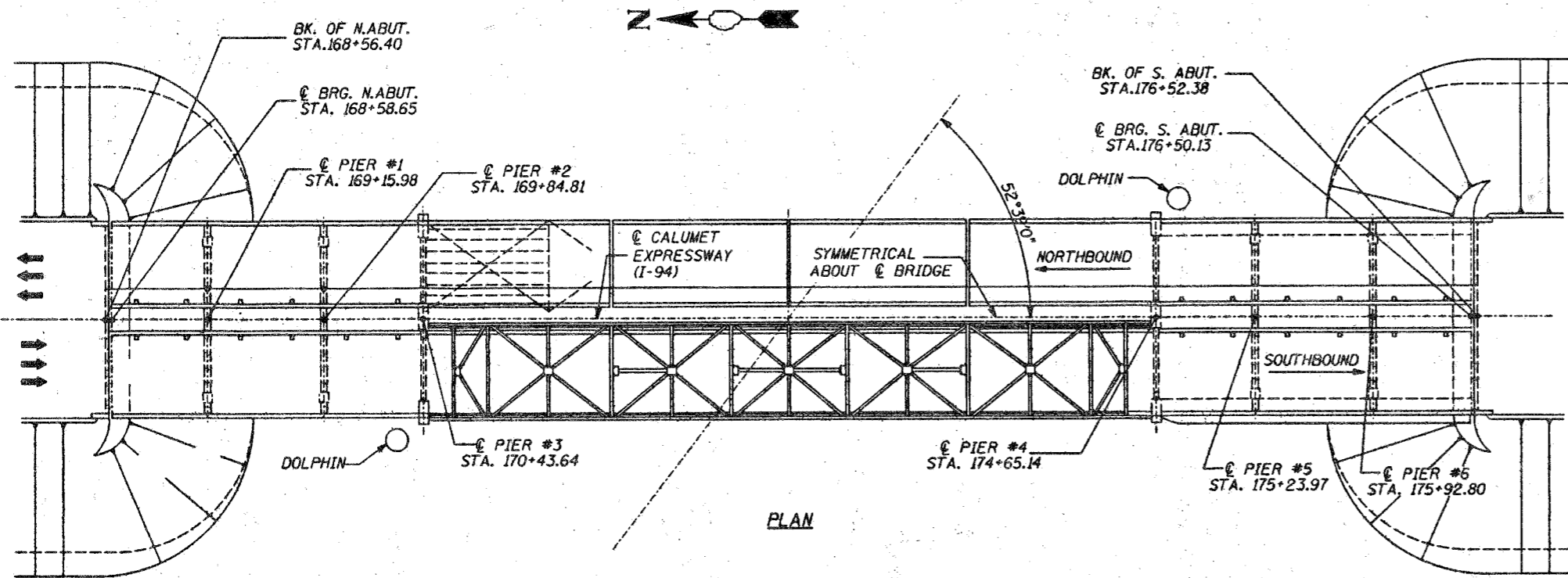
REVISIONS	
NAME	DATE

SCALE: VERT.
HORIZ.
DATE

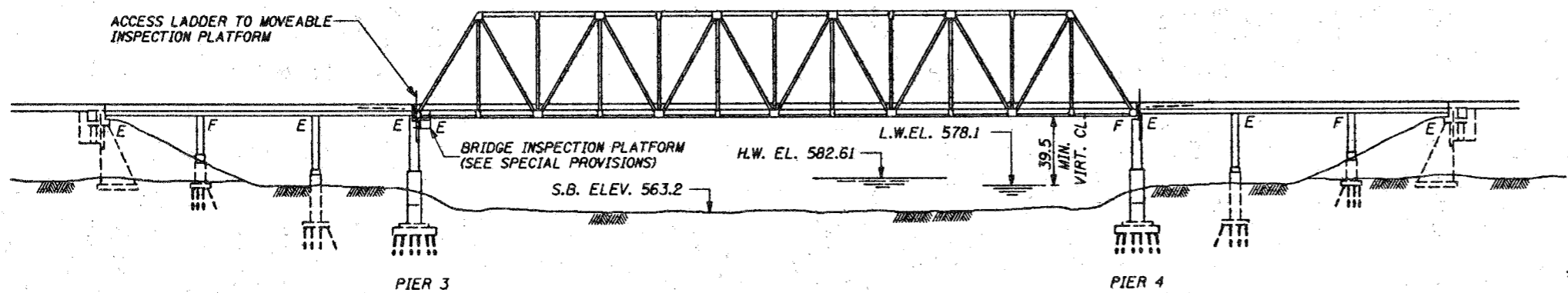
DRAWN BY
DESIGNED BY
CHECKED BY

ALPENDING

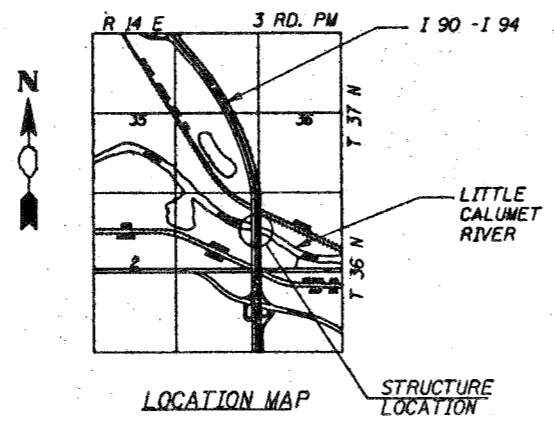
ROUTE NO.	SECTION	COUNTY	TOTAL SHEETS	SHEET NO.
94	42B-11-2-3	COOK	10	4
PROJECT NO.		ELABOR.	PROJECT	



PLAN



ELEVATION



LOCATION MAP

DESIGN SPECIFICATIONS
 AASHTO 1996
DESIGN STRESSES
 SERVICE LOAD DESIGN METHOD.
 $F_s = 20,000$ PSI (STRUCT. STEEL)

GENERAL NOTES:

THE APPLICABLE PORTIONS OF THE ILLINOIS DEPARTMENT OF TRANSPORTATION "STANDARD SPECIFICATION FOR ROAD AND BRIDGE CONSTRUCTION" ADOPTED JANUARY 1, 1997 AND THE "SUPPLEMENTAL SPECIFICATIONS AND RECURRING SPECIAL PROVISION" THERETO SHALL APPLY TO THIS PROJECT.

PLAN DIMENSIONS AND DETAILS RELATIVE TO EXISTING STRUCTURE HAVE BEEN TAKEN FROM EXISTING PLANS AND ARE SUBJECT TO NOMINAL CONSTRUCTION VARIATIONS. IT SHALL BE THE CONTRACTOR'S RESPONSIBILITY TO VERIFY SUCH DIMENSIONS AND DETAILS IN THE FIELD AND MAKE NECESSARY APPROVED ADJUSTMENTS PRIOR TO CONSTRUCTION OR ORDERING OF MATERIALS. SUCH VARIATIONS SHALL NOT BE CAUSE FOR ADDITIONAL COMPENSATION FOR A CHANGE IN THE SCOPE OF THE WORK. HOWEVER, THE CONTRACTOR WILL BE PAID FOR THE QUANTITY ACTUALLY FURNISHED AT THE UNIT PRICE BID FOR THE WORK.

FASTENERS SHALL BE HIGH STRENGTH BOLTS
 BOLTS $\frac{3}{4}$ " ϕ , OPEN HOLES $\frac{5}{16}$ " ϕ , UNLESS OTHERWISE NOTED.

ALL STRUCTURAL STEEL SHALL BE AASHTO M270 GRADE 36

ALL DIMENSIONS RELATING TO EXISTING STRUCTURE TO BE MEASURED AND VERIFIED BY THE CONTRACTOR PRIOR TO THE PREPARATION OF SHOP DRAWING AND ACTUAL CONSTRUCTION.

EXISTING STRUCTURAL STEEL SHALL ONLY BE CLEANED AND PAINTED AS REQUIRED BY THE SPECIAL PROVISION "CLEANING AND PAINTING ADJACENT AREAS OF EXISTING STEEL STRUCTURES".

THE INORGANIC ZINC RICH PRIMER/ACRYLIC/ACRYLIC PAINT SYSTEM SHALL BE USED FOR SHOP AND FIELD PAINTING OF STRUCTURAL STEEL EXCEPT WHERE OTHERWISE NOTED. THE COLOR OF THE ACRYLIC FINISH COAT SHALL BE GRAY, MUNSELL NO. 5B 7/1 SEE SPECIAL PROVISION "CLEANING AND PAINTING NEW METAL STRUCTURES".

TOTAL BILL OF MATERIAL

ITEM	UNIT	QUANTITY
* MONORAIL BEAMS	L.S.	1 **
* BRIDGE INSPECTION PLATFORM	L.S.	1 **

* SEE SPECIAL PROVISIONS
 ** 0.5 PER BRIDGE



STRUCTURE NO'S. 016-0158 & 016-0159

GENERAL PLAN AND ELEVATION

REVISIONS	STATE OF ILLINOIS DEPARTMENT OF TRANSPORTATION DIVISION OF HIGHWAYS	DATE	BY
1		8-17-98	L.L.
2		8-17-98	P.K.
3			
4			
5			
6			
7			
8			
9			
10			

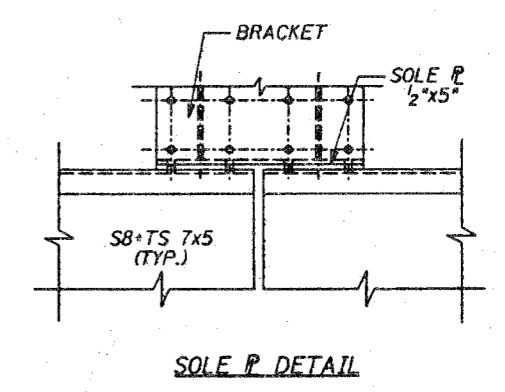
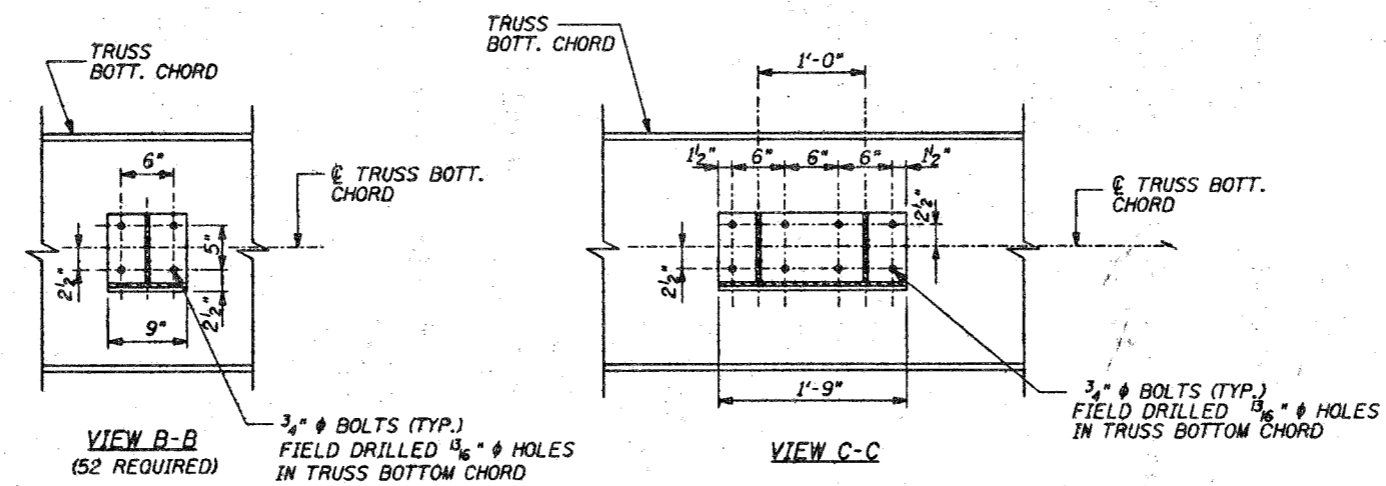
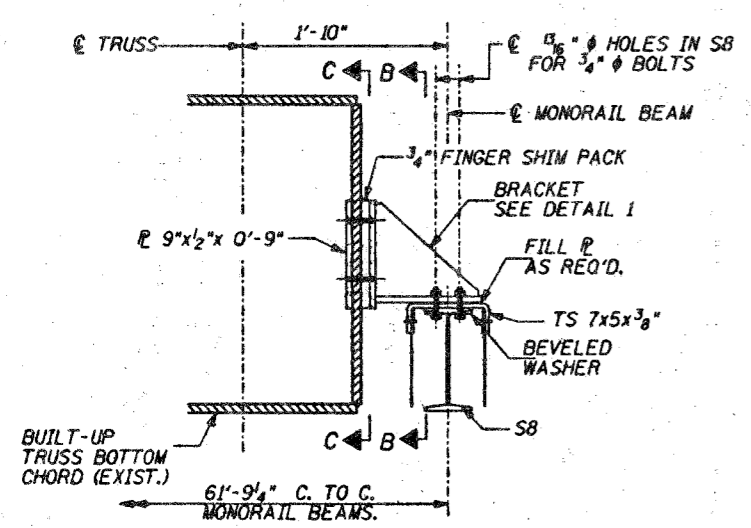
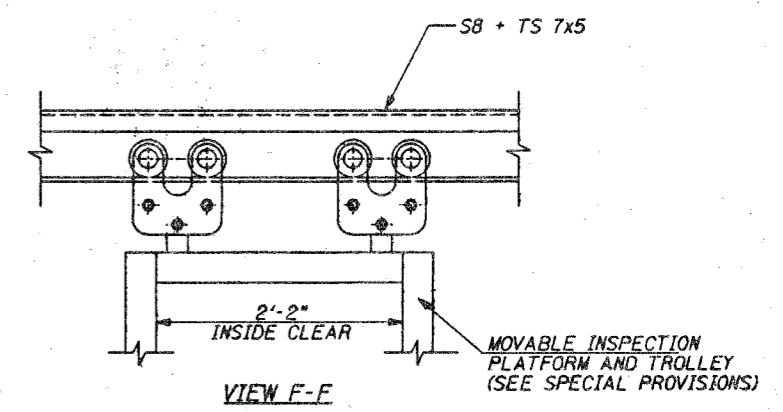
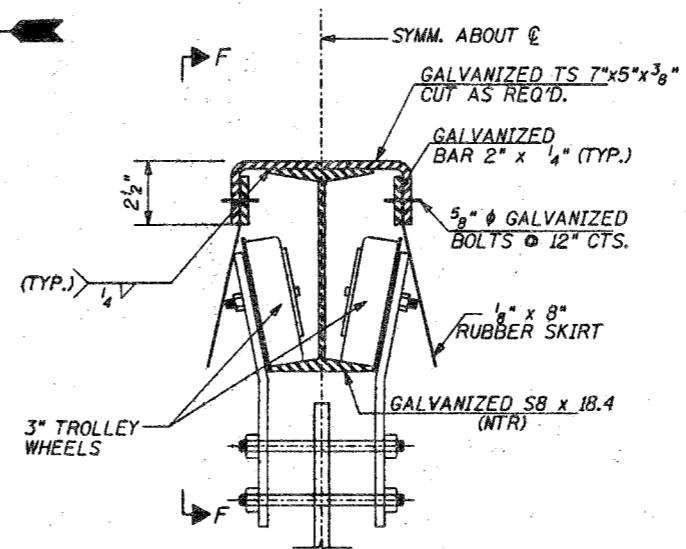
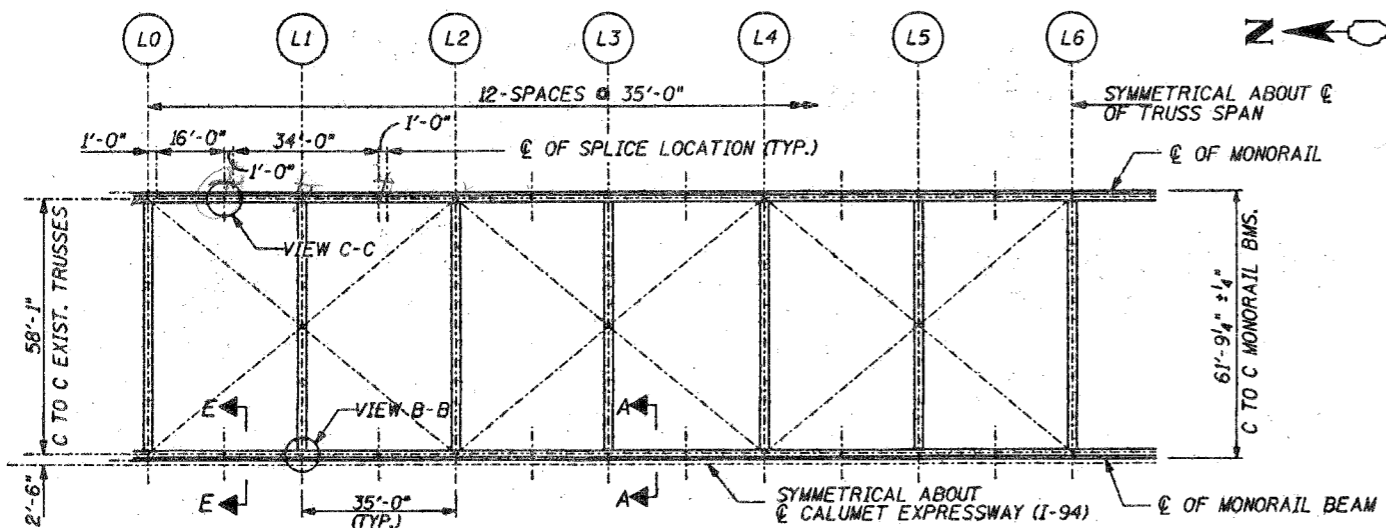
F.A.I. RTE. 94
 OVER LITTLE CALUMET RIVER

PROJECT NO. 4222-5
 SHEET NO. 1 OF 4

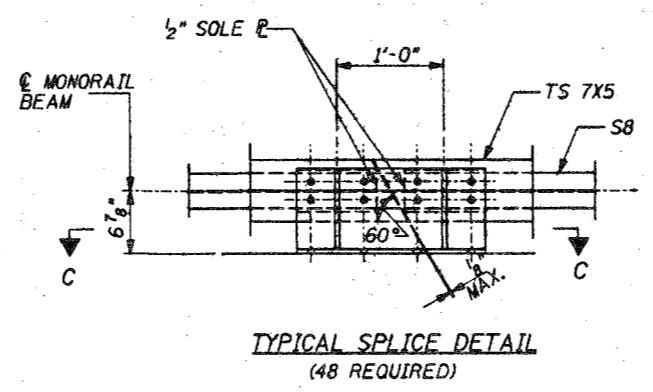
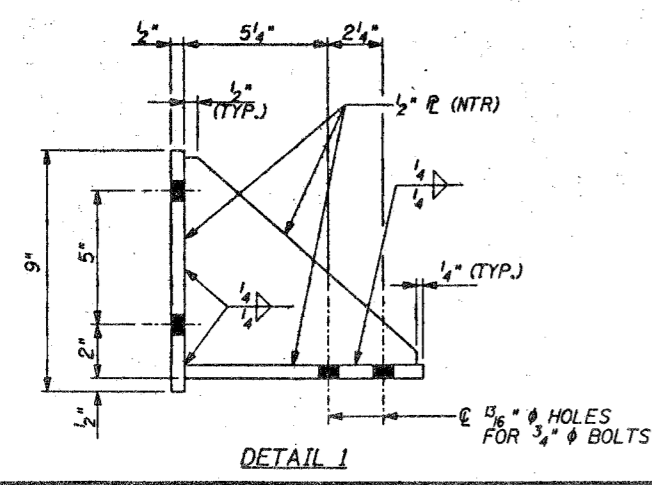
CHASTAIN & ASSOCIATES, LLP
 8000 N. BRYN MAWR AVENUE
 SUITE 204
 CHICAGO, ILLINOIS 60631
 773-714-0050
 FAX 773-714-0050

EXP. 11-30-98

ROUTE NO.	SECTION	COUNTY	TOTAL SHEETS	SHEET NO.
94	428-11-2-3	COOK	10	5
FIELDING DIST. NO.	BLINDS	PROJECT		



- NOTES:
- NO PART OF MONORAIL BEAM ASSEMBLY SHALL PROJECT BELOW THE BOTTOM OF TRUSS BOTTOM CHORD.
 - USE 2 HARDENED WASHERS WITH OVERSIZE HOLES.
 - "NTR" DENOTES PLATES AND SECTION TO WHICH SUPPLEMENTAL REQUIREMENTS FOR NOTCH TOUGHNESS ZONE 2 IS APPLICABLE.



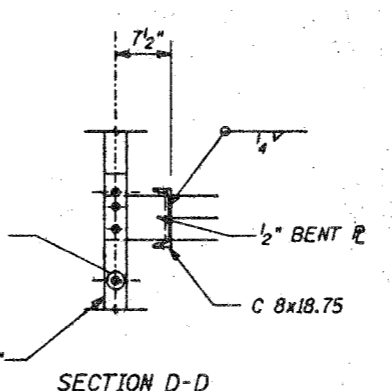
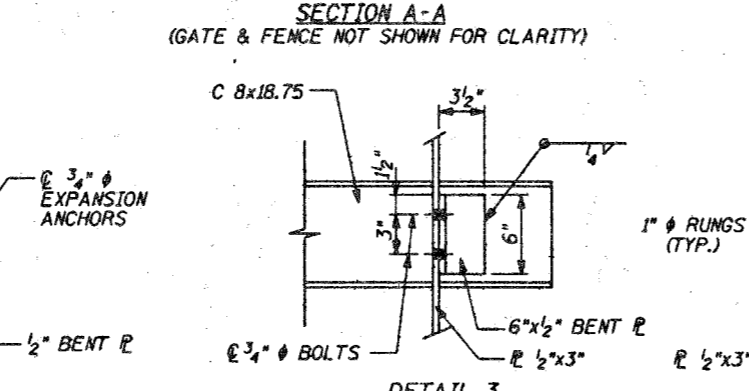
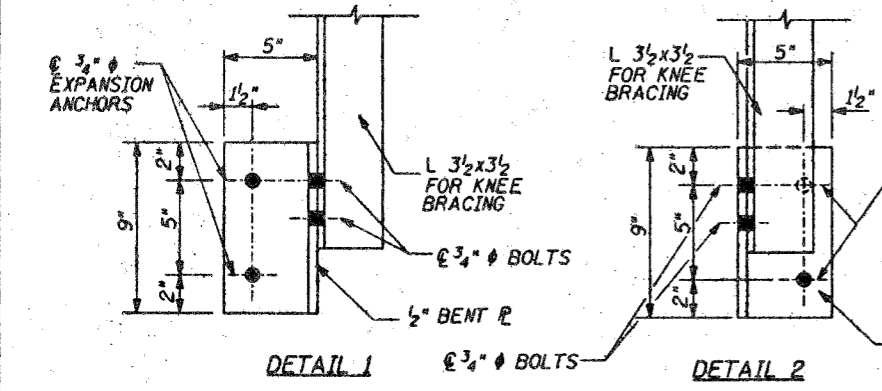
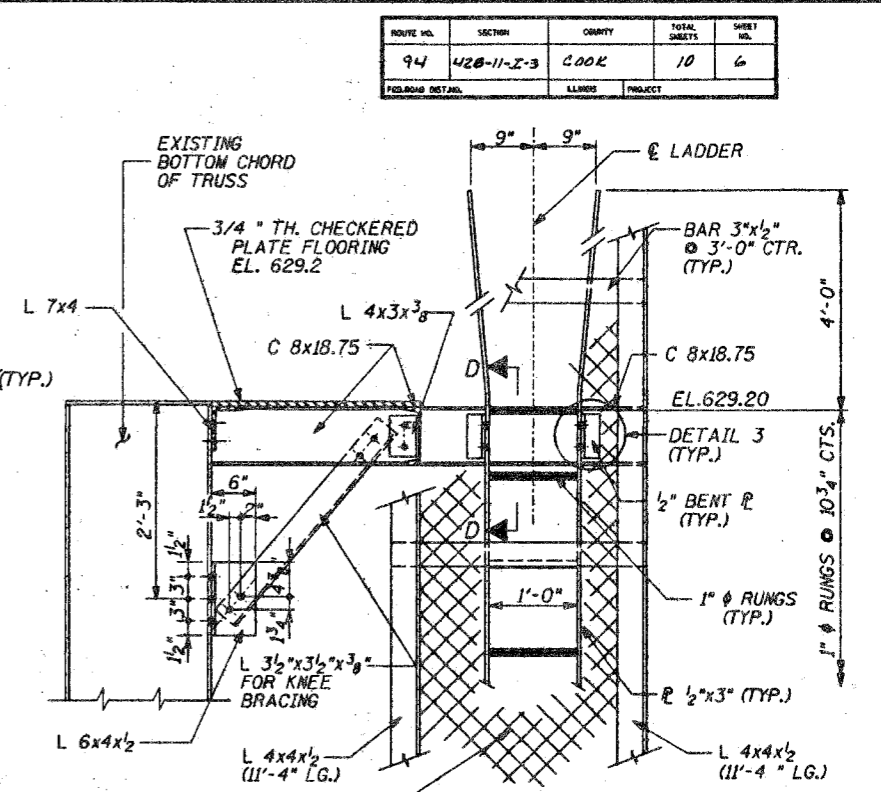
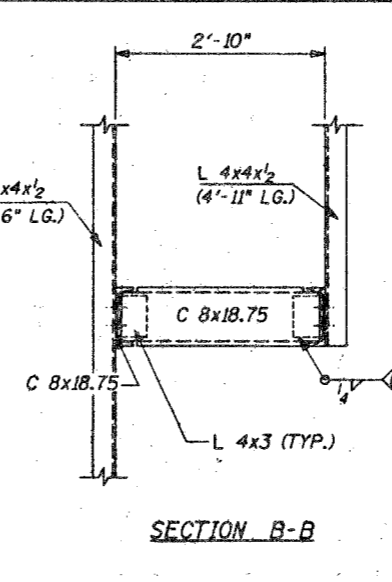
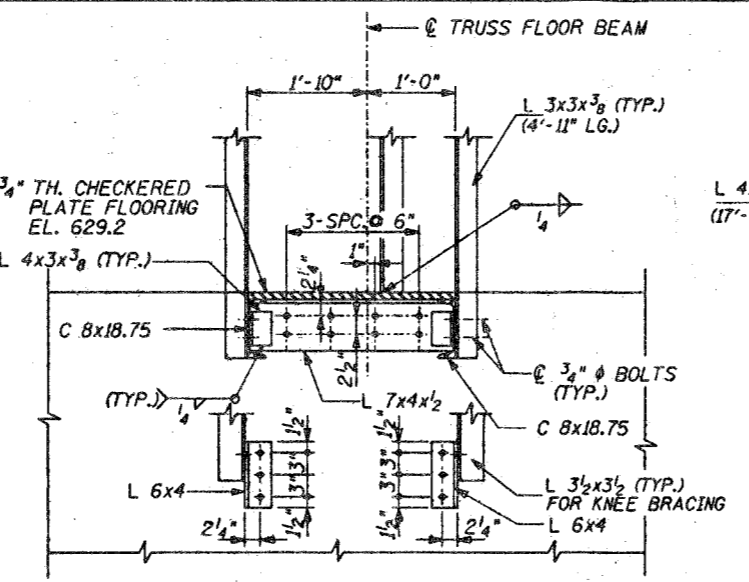
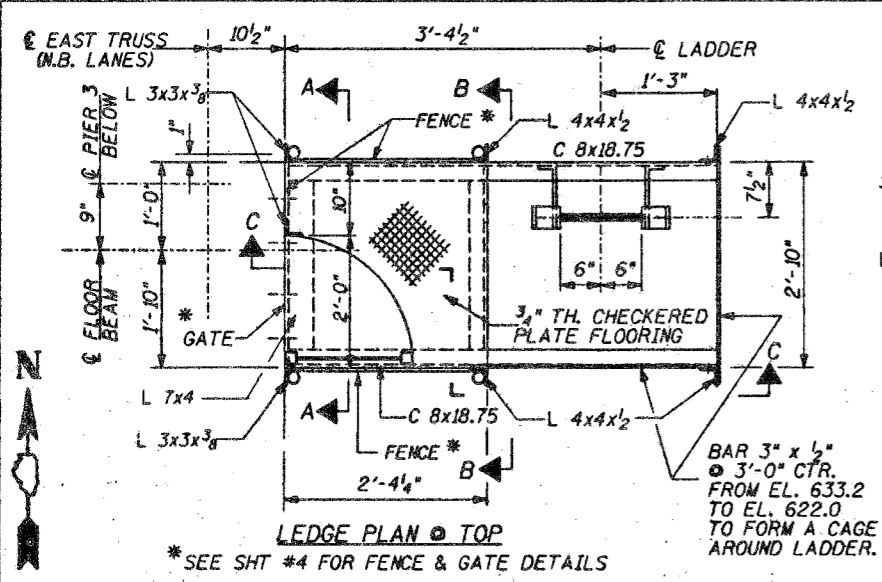
STRUCTURE NO'S. 016-0158 & 016-0159

REVISIONS		STATE OF ILLINOIS DEPARTMENT OF TRANSPORTATION DIVISION OF HIGHWAYS		DATE
1				L.I.L. 8-17-98
2				ORDER BY DATE P.K. 8-17-98
3				BOOK NUMBER
4				
5				
6				
7				
8				
9				
10				

PROJECT NO. 4222-5	
SHEET NO. 2 OF 4	

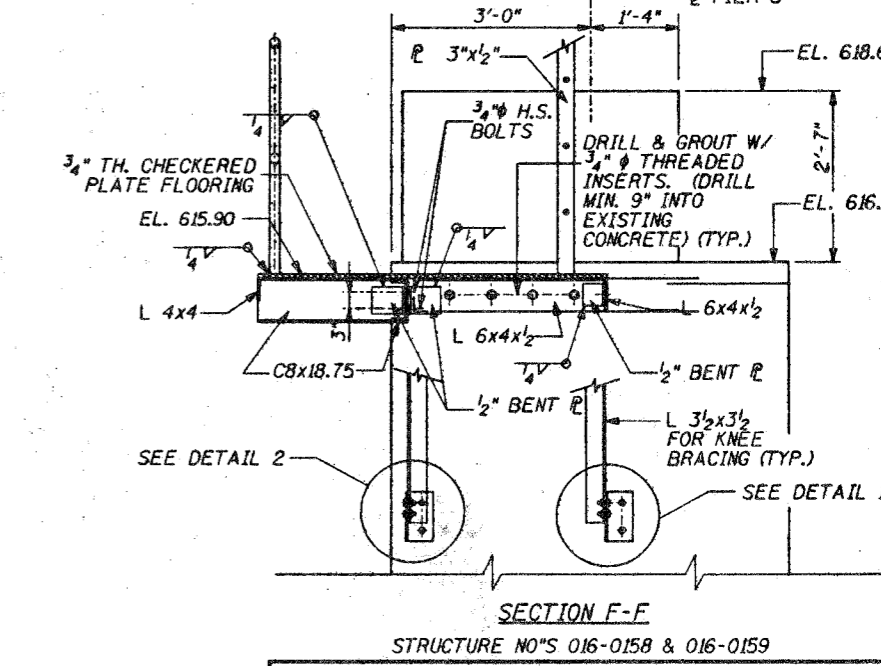
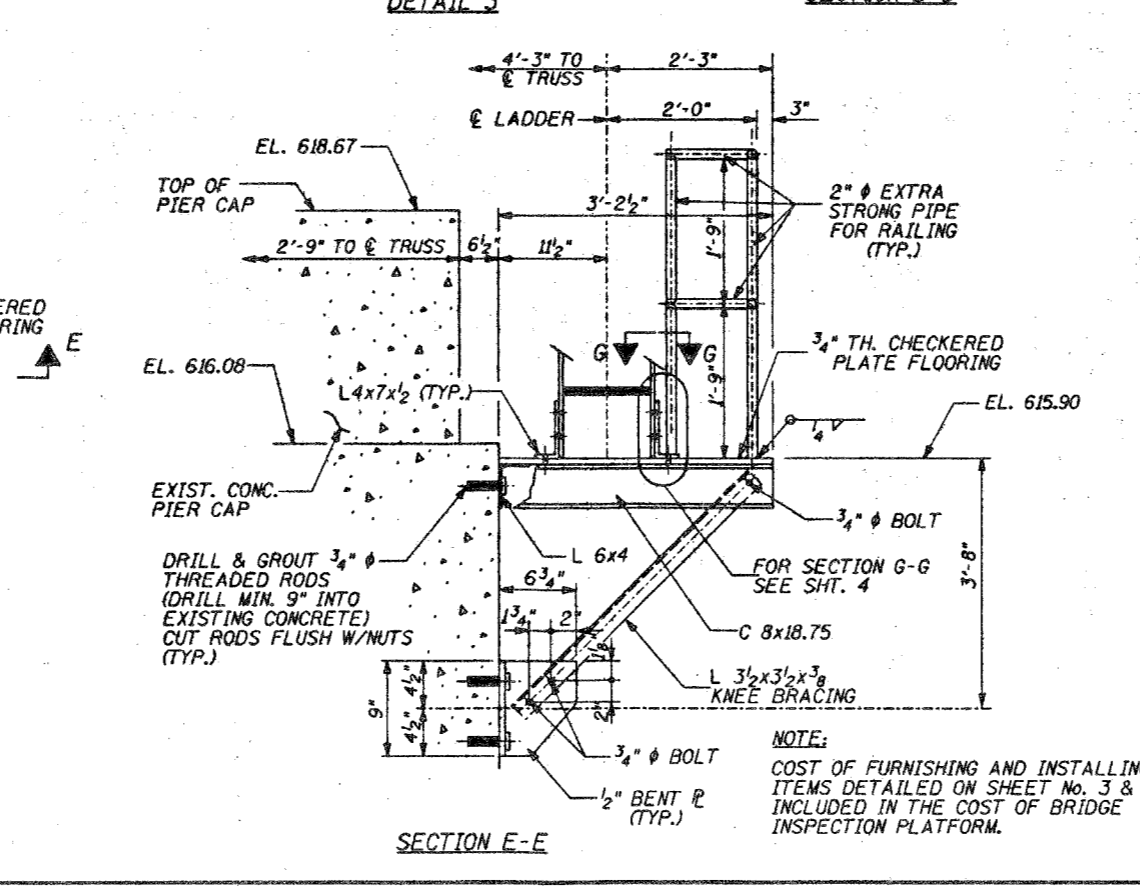
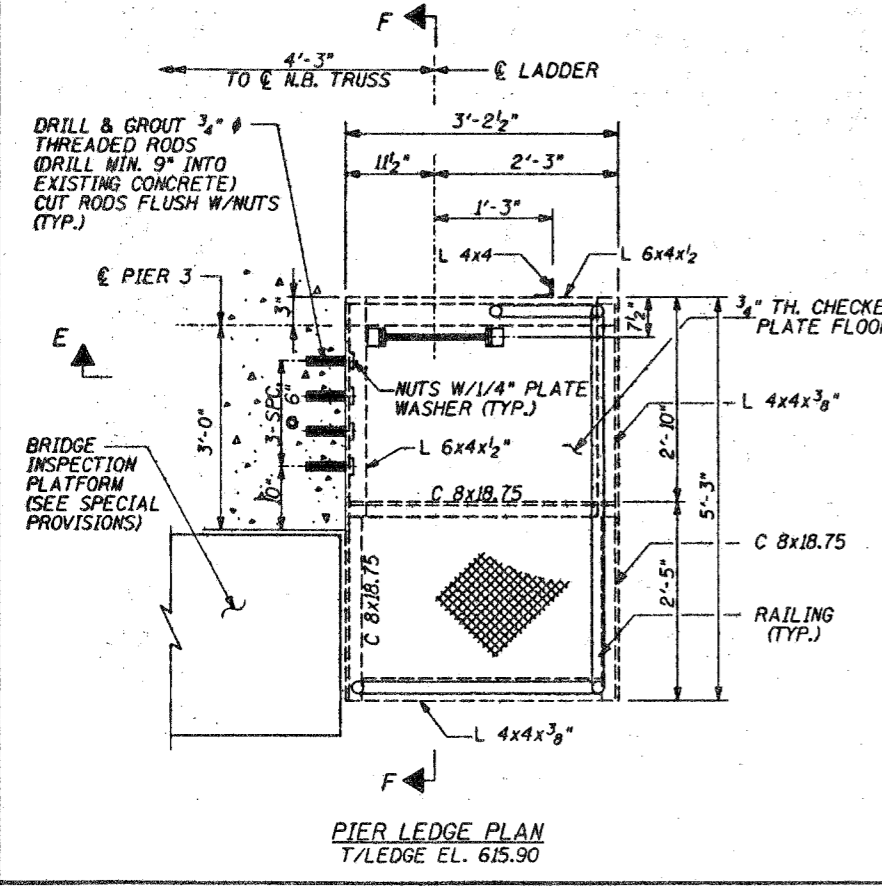
CHASTAIN & ASSOCIATES, LLP CONSULTING ENGINEERS	8000 W. BRYN MAWR AVENUE SUITE 204 CHICAGO, ILLINOIS 60651 773-714-0000 FAX: 773-714-0005
--	---

ROUTE NO.	SECTION	COUNTY	TOTAL SHEETS	SHEET NO.
94	428-11-Z-3	COOK	10	6
PROJECT		ILLINOIS		



9 GAGE WIRE, CHAIN LINK FENCE FABRIC (CAGE), TIE TO L 4x4x2 AND 3"x2" BAR @ ± 3'-0" FROM EL. 633.2 TO EL. 622.0 IN ACCORDANCE WITH ART. 664 OF THE STD. SPECS. COST INCLUDED WITH BRIDGE INSPECTION PLATFORM.

FOR BALANCE OF LADDER DETAIL SEE SHT. NO. 4



NOTE:
COST OF FURNISHING AND INSTALLING ALL ITEMS DETAILED ON SHEET NO. 3 & 4 ARE INCLUDED IN THE COST OF BRIDGE INSPECTION PLATFORM.

REVISIONS	DATE	BY	REASON
1			
2			
3			
4			
5			
6			
7			
8			
9			
10			

STATE OF ILLINOIS
DEPARTMENT OF TRANSPORTATION
DIVISION OF HIGHWAYS

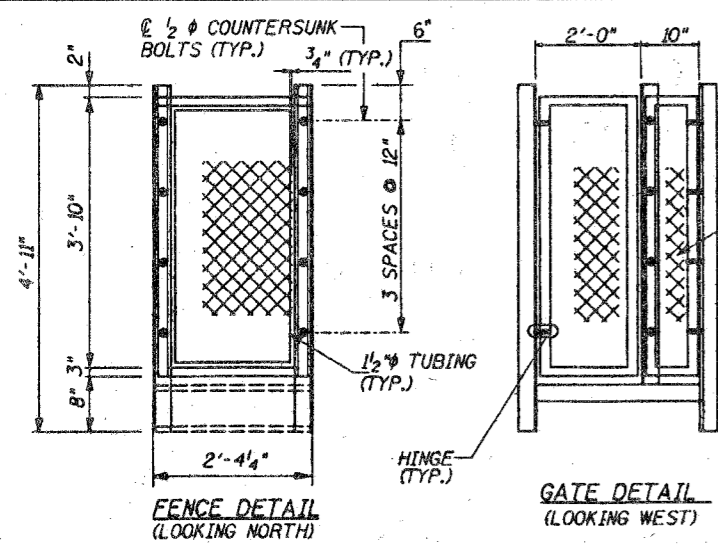
F.A.I. RTE. 94
OVER LITTLE CALUNET RIVER

CHASTAIN & ASSOCIATES, L.L.P.
CONSULTING ENGINEERS

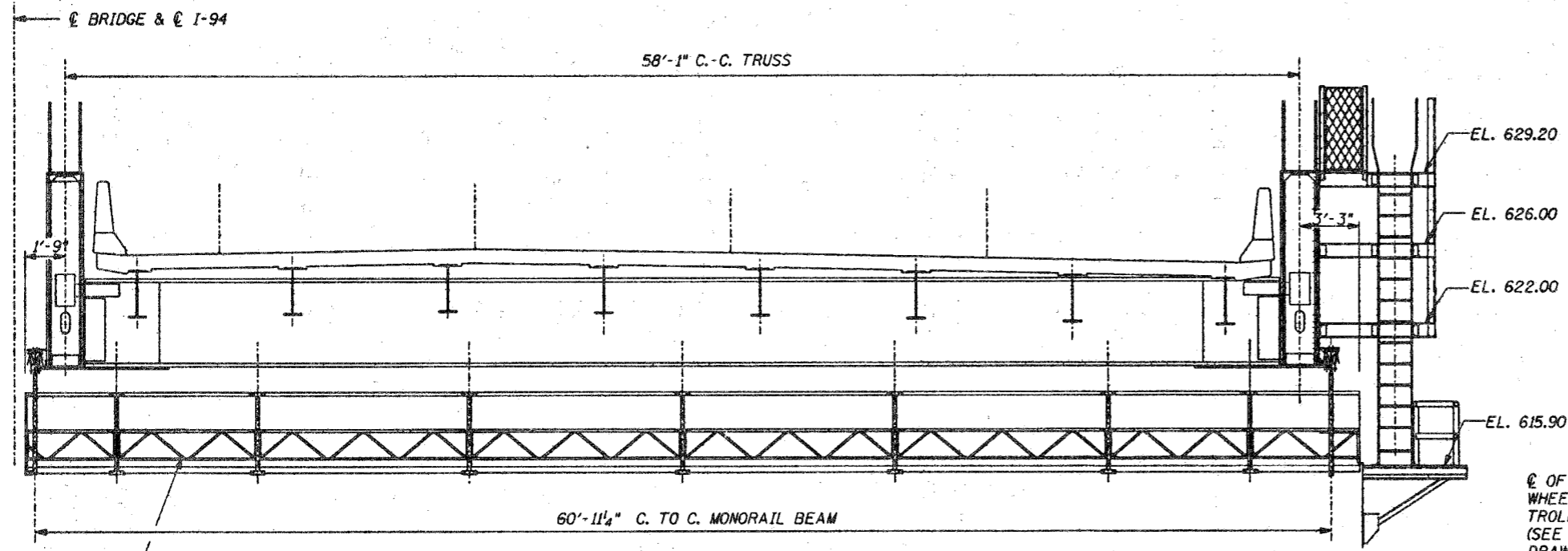
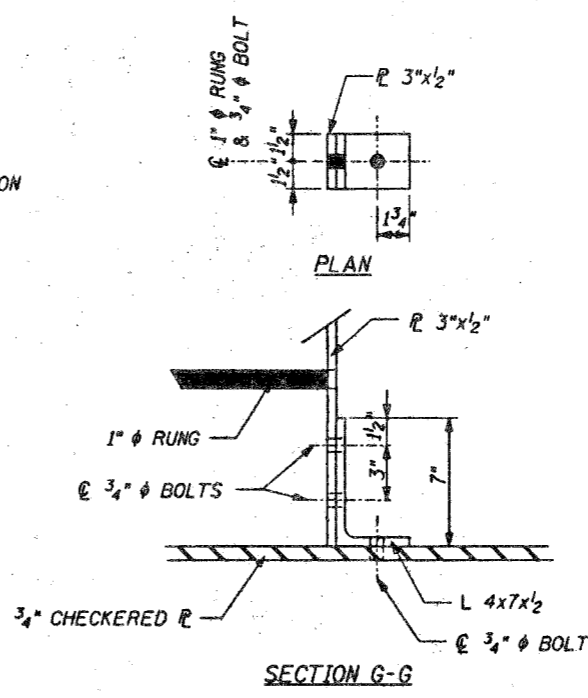
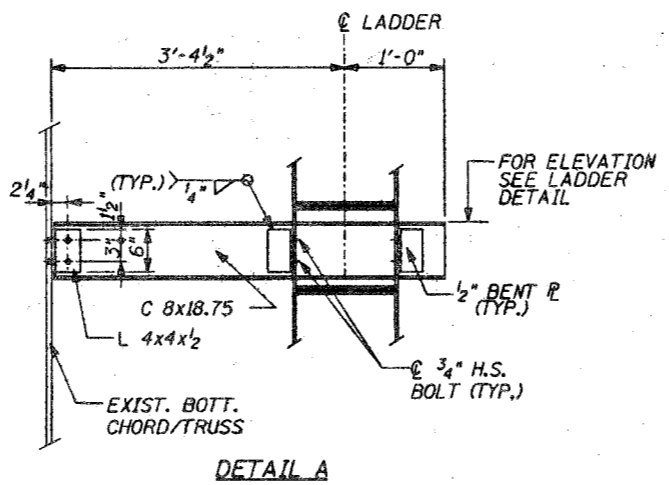
0600 N. 88TH MAVE AVENUE
SUITE 204
CHICAGO, ILLINOIS 60651
773-714-0050
FAX 773-714-0055

DESIGN BY DATE: L.L. 8-17-98
CHECKED BY DATE: P.K. 8-17-98
PROJECT NO.: 4222-5
SHEET NO.: 3 OF 4

ROUTE NO.	SECTION	COUNTY	TOTAL SHEETS	SHEET NO.
94	428-11-2-3	COOK	10	7
FILING DISTRICT		LINE	PROJECT	

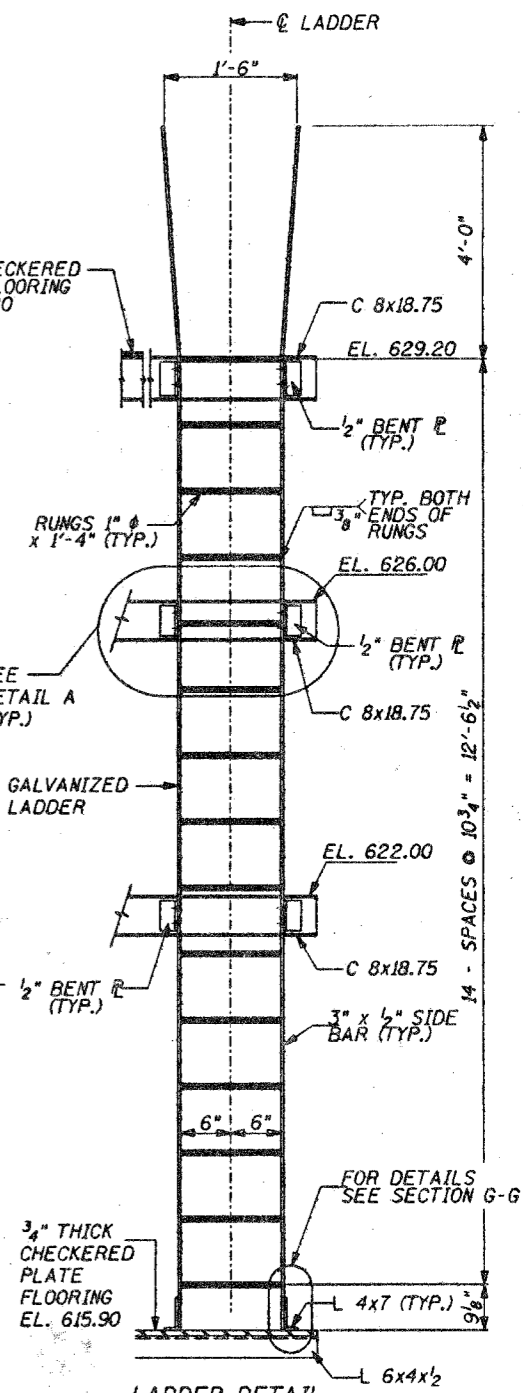
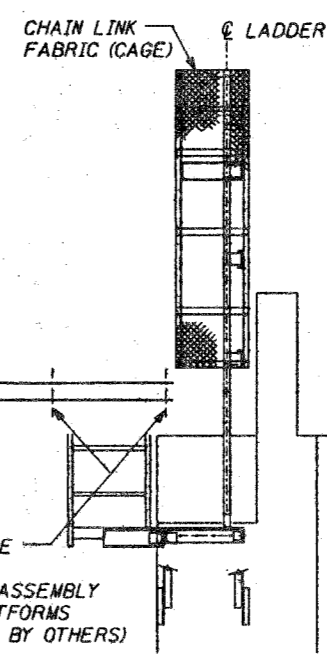


CHAIN LINK FENCE IN ACCORDANCE WITH ARTICLE 664 OF THE STANDARD SPECIFICATION (TYP.)

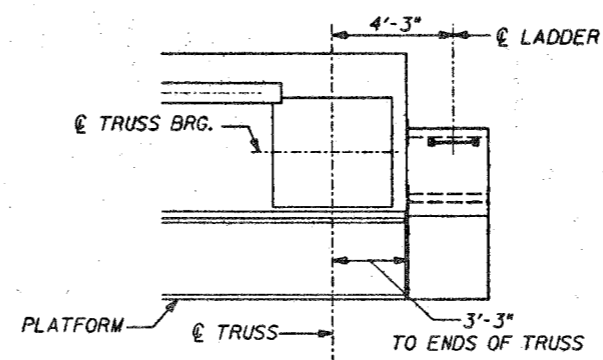


ALUMINUM BRIDGE INSPECTION PLATFORM (SEE SPECIAL PROVISIONS)

GENERAL ELEVATION OF PLATFORM



LADDER DETAIL
 STRUCTURE NO'S. 016-0158 & 016-0159



PARTIAL LEDGE PLAN AT PIER

NOTE:
 COST OF FURNISHING AND INSTALLING ALL ITEMS ON SHEET No. 3 & 4 ARE INCLUDED IN THE COST OF BRIDGE INSPECTION PLATFORM.

REVISIONS		STATE OF ILLINOIS DEPARTMENT OF TRANSPORTATION DIVISION OF HIGHWAYS	DESIGNED BY DATE L.L. 8-17-98 CHECKED BY DATE P.K. 8-17-98 BOOK NUMBER
NO.	DATE		
1		F.A.I. RTE. 94 OVER LITTLE CALUMET RIVER	SHEET NO. 4 OF 4
2			
3		CHASTAIN & ASSOCIATES, LLP 8600 W. BRYN MAWR AVENUE SUITE 204 CHICAGO, ILLINOIS 60631 773-714-0589 FAX 773-714-0585	