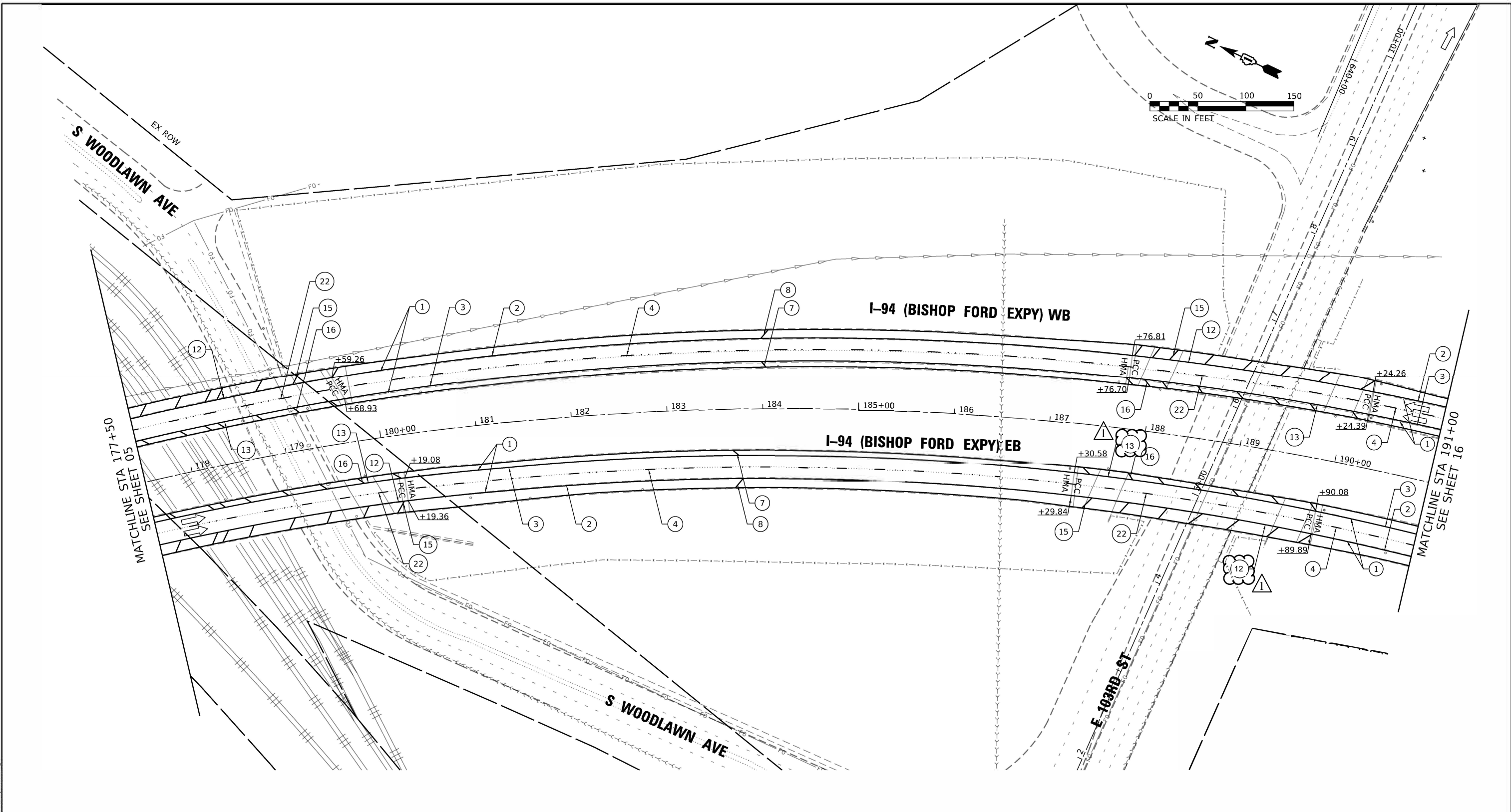


MODEL: Default
FILE NAME: \\hbmepw11cs01\CS\proj\work_dir\242914461_1010162K53-shr-cm1006.dgn



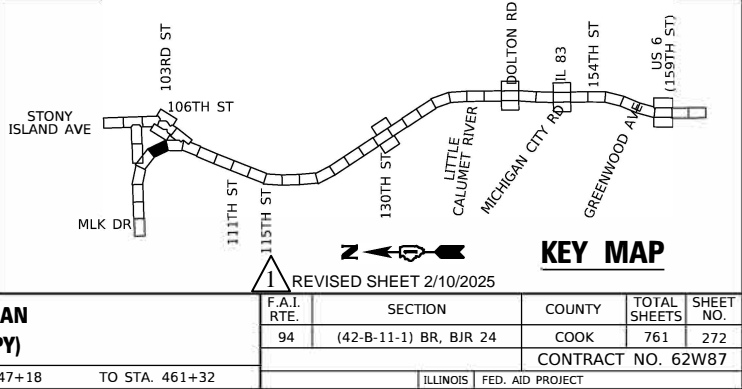
LEGEND

- 1 SHOULDER RUMBLE STRIPS, 16" (64200116)
- 2 THERMOPLASTIC PAVEMENT MARKING - LINE 4", WHITE (78000200)
- 3 THERMOPLASTIC PAVEMENT MARKING - LINE 4", YELLOW (78000200)
- 4 PREFORMED PLASTIC PAVEMENT MARKING, TYPE D - LINE 5", 10' DASH, 30' SKIP, WHITE (78004625)
- 5 PREFORMED PLASTIC PAVEMENT MARKING, TYPE D - LINE 4", 2' DASH, 6' SKIP, WHITE (78004620)

- 6 THERMOPLASTIC PAVEMENT MARKING - LINE 8", WHITE (78000500)
- 7 THERMOPLASTIC PAVEMENT MARKING - LINE 12", YELLOW, 45°, 500' SPACING (78000600)
- 8 THERMOPLASTIC PAVEMENT MARKING - LINE 12", WHITE, 45°, 500' SPACING (78000600)
- 9 THERMOPLASTIC PAVEMENT MARKING - LINE 12", WHITE, CHEVRONS, 30' SPACING (78000600)
- 10 THERMOPLASTIC PAVEMENT MARKING - LETTERS AND SYMBOLS, WHITE (78000100)
- 11 PREFORMED PLASTIC PAVEMENT MARKING, TYPE D - LINE 8", 3' DASH, 9' SKIP, WHITE (78004640)

- 12 MODIFIED URETHANE PAVEMENT MARKING - LINE 4", WHITE (78009004)
- 13 MODIFIED URETHANE PAVEMENT MARKING - LINE 4", YELLOW (78009004)
- 14 MODIFIED URETHANE PAVEMENT MARKING - LINE 8", WHITE (78009008)
- 15 MODIFIED URETHANE PAVEMENT MARKING - LINE 12", WHITE, 45°, 500' SPACING (78009013)
- 16 MODIFIED URETHANE PAVEMENT MARKING - LINE 12", YELLOW, 45°, 500' SPACING (78009012)
- 17 MODIFIED URETHANE PAVEMENT MARKING - LINE 12", WHITE, CHEVRON, 30' SPACING (78009012)

- 18 MODIFIED URETHANE PAVEMENT MARKING - LINE 12", WHITE, 45° (78009012)
- 19 MODIFIED URETHANE PAVEMENT MARKING - LINE 12", YELLOW, 45° (78009012)
- 20 PREFORMED PLASTIC PAVEMENT MARKING, TYPE D - LINE 7" CONTRAST, 2' DASH, 6' SKIP, WHITE (78004635)
- 21 RAISED REFLECTIVE PAVEMENT MARKERS (78100100)
- 22 PREFORMED PLASTIC PAVEMENT MARKING TYPE D - LINE 8" CONTRAST, 10' DASH, 30' SKIP, WHITE (78004640)
- 23 MODIFIED URETHANE PAVEMENT MARKING - LINE 8", YELLOW (78009008)



USER NAME	= hbmepw11cs01\$
PLOT SCALE	= 100.0000' / in.
PLOT DATE	= 12/10/2024

DESIGNED	= FA	REVISED	=
DRAWN	= FA	REVISED	=
CHECKED	= AMI	REVISED	=
DATE	= 12/9/2024	REVISED	=

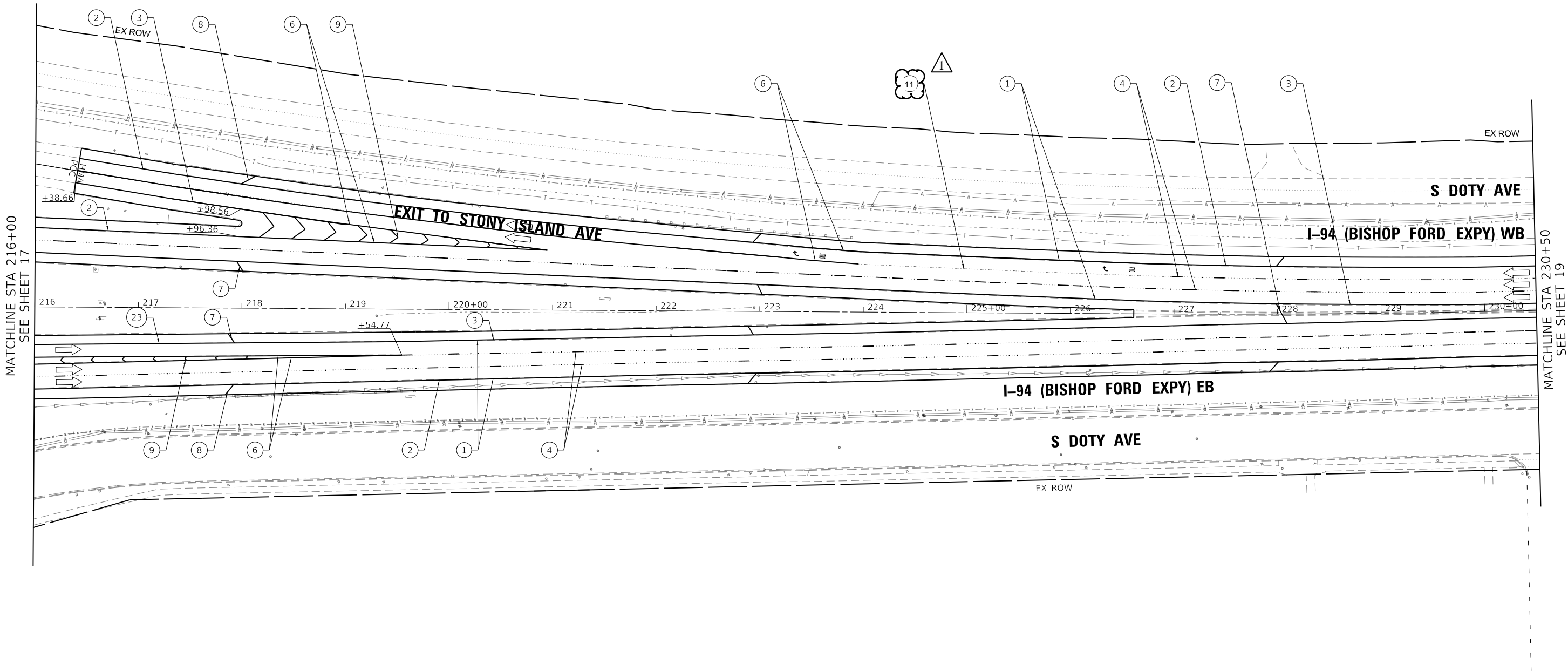
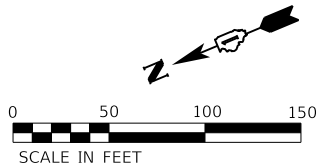
STATE OF ILLINOIS
DEPARTMENT OF TRANSPORTATION

PAVEMENT MARKING PLAN
I-94 (BISHOP FORD EXPY)

SCALE: SHEET 15 OF 56 SHEETS STA. 447+18 TO STA. 461+32

REVISED SHEET 2/10/2025

F.A.I. RTE.	SECTION	COUNTY	TOTAL SHEETS	SHEET NO.
94	(42-B-11-1) BR, BJR 24	COOK	761	272
CONTRACT NO. 62W87				
ILLINOIS FED. AID PROJECT				



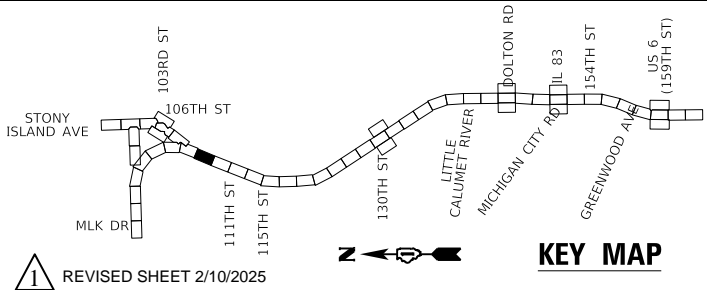
LEGEND

- 1 SHOULDER RUMBLE STRIPS, 16" (64200116)
- 2 THERMOPLASTIC PAVEMENT MARKING - LINE 4", WHITE (78000200)
- 3 THERMOPLASTIC PAVEMENT MARKING - LINE 4", YELLOW (78000200)
- 4 PREFORMED PLASTIC PAVEMENT MARKING, TYPE D - LINE 5", 10' DASH, 30' SKIP, WHITE (78004625)
- 5 PREFORMED PLASTIC PAVEMENT MARKING, TYPE D - LINE 4", 2' DASH, 6' SKIP, WHITE (78004620)

- 6 THERMOPLASTIC PAVEMENT MARKING - LINE 8", WHITE (78000500)
- 7 THERMOPLASTIC PAVEMENT MARKING - LINE 12", YELLOW, 45°, 500' SPACING (78000600)
- 8 THERMOPLASTIC PAVEMENT MARKING - LINE 12", WHITE, 45°, 500' SPACING (78000600)
- 9 THERMOPLASTIC PAVEMENT MARKING - LINE 12", WHITE, CHEVRONS, 30' SPACING (78000600)
- 10 THERMOPLASTIC PAVEMENT MARKING - LETTERS AND SYMBOLS, WHITE (78000100)
- 11 PREFORMED PLASTIC PAVEMENT MARKING, TYPE D - LINE 8", 3' DASH, 9' SKIP, WHITE (78004640)

- 12 MODIFIED URETHANE PAVEMENT MARKING - LINE 4", WHITE (78009004)
- 13 MODIFIED URETHANE PAVEMENT MARKING - LINE 4", YELLOW (78009004)
- 14 MODIFIED URETHANE PAVEMENT MARKING - LINE 8", WHITE (78009008)
- 15 MODIFIED URETHANE PAVEMENT MARKING - LINE 12", WHITE, 45°, 500' SPACING (78009012)
- 16 MODIFIED URETHANE PAVEMENT MARKING - LINE 12", YELLOW, 45°, 500' SPACING (78009012)
- 17 MODIFIED URETHANE PAVEMENT MARKING - LINE 12", WHITE, CHEVRON, 30' SPACING (78009012)

- 18 MODIFIED URETHANE PAVEMENT MARKING - LINE 12", WHITE, 45° (78009012)
- 19 MODIFIED URETHANE PAVEMENT MARKING - LINE 12", YELLOW, 45° (78009012)
- 20 PREFORMED PLASTIC PAVEMENT MARKING, TYPE D - LINE 7" CONTRAST, 2' DASH, 6' SKIP, WHITE (78004635)
- 21 RAISED REFLECTIVE PAVEMENT MARKERS (78100100)
- 22 PREFORMED PLASTIC PAVEMENT MARKING TYPE D - LINE 8" CONTRAST, 10' DASH, 30' SKIP, WHITE (78004640)
- 23 MODIFIED URETHANE PAVEMENT MARKING - LINE 8", YELLOW (78009008)



USER NAME	= hbmepw11cs01s
PLOT SCALE	= 100.0000 ' / in.
PLOT DATE	= 12/10/2024

DESIGNED -	FA	REVISED -
DRAWN -	FA	REVISED -
CHECKED -	AMI	REVISED -
DATE -	12/9/2024	REVISED -

STATE OF ILLINOIS
DEPARTMENT OF TRANSPORTATION

PAVEMENT MARKING PLAN
I-94 (BISHOP FORD EXPY)

SCALE:	SHEET 18	OF 56	SHEETS	STA. 447+21	TO STA. 461+29
--------	----------	-------	--------	-------------	----------------

F.A.I. RTE.	SECTION	COUNTY	TOTAL SHEETS	SHEET NO.
94	(42-B-11-1) BR, BJR 24	COOK	761	275
CONTRACT NO. 62W87				
ILLINOIS FED. AID PROJECT				

MODEL: Default
FILE NAME: \\hbm\new11cs01\CS_pmk_work_dtl\242911461_880102\K53-shl-pmk\035.dgn

LEGEND

- ① SHOULDER RUMBLE STRIPS, 16" (64200116)
- ② THERMOPLASTIC PAVEMENT MARKING - LINE 4", WHITE (78000200)
- ③ THERMOPLASTIC PAVEMENT MARKING - LINE 4", YELLOW (78000200)
- ④ PREFORMED PLASTIC PAVEMENT MARKING, TYPE D - LINE 5", 10' DASH, 30' SKIP, WHITE (78004625)
- ⑤ PREFORMED PLASTIC PAVEMENT MARKING, TYPE D - LINE 4", 2' DASH, 6' SKIP, WHITE (78004620)

- ⑥ THERMOPLASTIC PAVEMENT MARKING - LINE 8", WHITE (78000500)
- ⑦ THERMOPLASTIC PAVEMENT MARKING - LINE 12", YELLOW, 45°, 500' SPACING (78000600)
- ⑧ THERMOPLASTIC PAVEMENT MARKING - LINE 12", WHITE, 45°, 500' SPACING (78000600)
- ⑨ THERMOPLASTIC PAVEMENT MARKING - LINE 12", WHITE, CHEVRONS, 30' SPACING (78000600)
- ⑩ THERMOPLASTIC PAVEMENT MARKING - LETTERS AND SYMBOLS, WHITE (78000100)
- ⑪ PREFORMED PLASTIC PAVEMENT MARKING, TYPE D - LINE 8", 3' DASH, 9' SKIP, WHITE (78004640)

- ⑫ MODIFIED URETHANE PAVEMENT MARKING - LINE 4", WHITE (78009004)
- ⑬ MODIFIED URETHANE PAVEMENT MARKING - LINE 4", YELLOW (78009004)
- ⑭ MODIFIED URETHANE PAVEMENT MARKING - LINE 8", WHITE (78009008)
- ⑮ MODIFIED URETHANE PAVEMENT MARKING - LINE 12", WHITE, 45°, 500' SPACING (78009012)
- ⑯ MODIFIED URETHANE PAVEMENT MARKING - LINE 12", YELLOW, 45°, 500' SPACING (78009012)
- ⑰ MODIFIED URETHANE PAVEMENT MARKING - LINE 12", WHITE, CHEVRON, 30' SPACING (78009012)

- ⑱ MODIFIED URETHANE PAVEMENT MARKING - LINE 12", WHITE, 45° (78009012)
- ⑲ MODIFIED URETHANE PAVEMENT MARKING - LINE 12", YELLOW, 45° (78009012)
- ⑳ PREFORMED PLASTIC PAVEMENT MARKING, TYPE D - LINE 7" CONTRAST, 2' DASH, 6' SKIP, WHITE (78004635)
- ㉑ RAISED REFLECTIVE PAVEMENT MARKERS (78100100)
- ㉒ PREFORMED PLASTIC PAVEMENT MARKING TYPE D - LINE 8" CONTRAST, 10' DASH, 30' SKIP, WHITE (78004640)
- ㉓ MODIFIED URETHANE PAVEMENT MARKING - LINE 8", YELLOW (78009008)



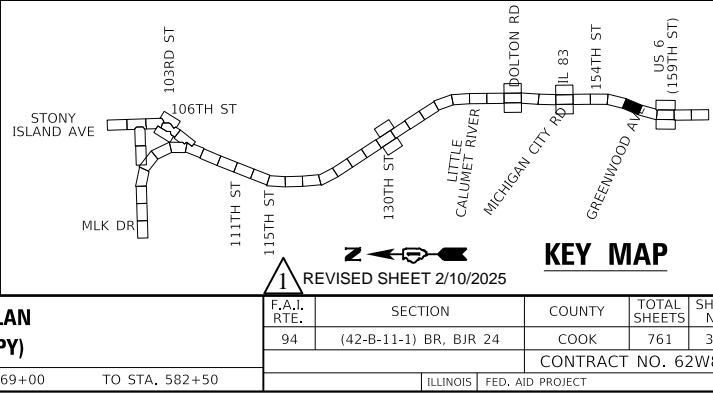
USER NAME	= hbmepw11cs01\$
PLOT SCALE	= 100.0000 ' / in.
PLOT DATE	= 12/10/2024

DESIGNED -	FA	REVISED -
DRAWN -	FA	REVISED -
CHECKED -	AMI	REVISED -
DATE -	12/9/2024	REVISED -

STATE OF ILLINOIS
DEPARTMENT OF TRANSPORTATION

PAVEMENT MARKING PLAN
I-94 (BISHOP FORD EXPY)

SCALE: SHEET 50 OF 56 SHEETS STA. 569+00 TO STA. 582+50



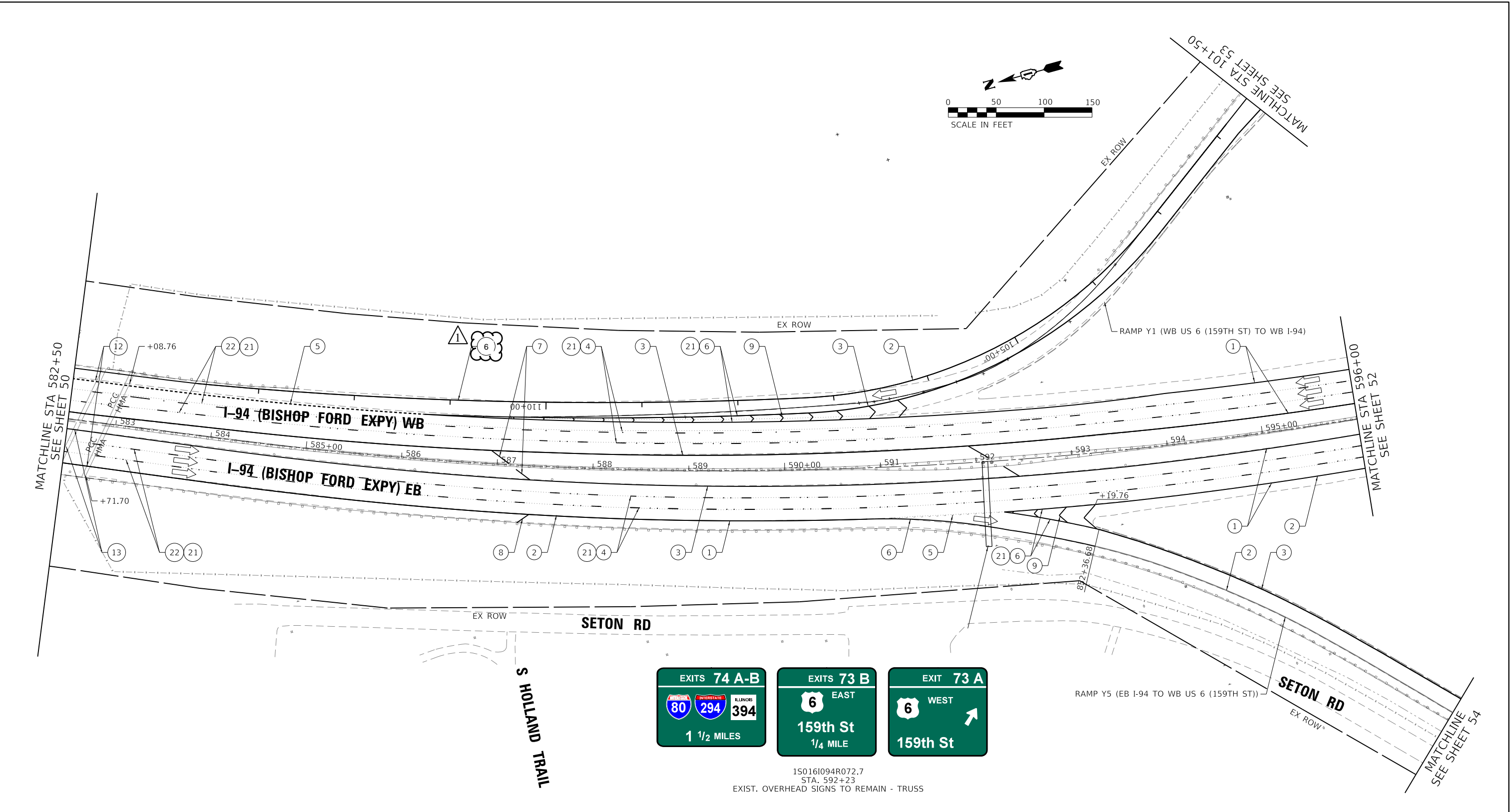
1 REVISED SHEET 2/10/2025

KEY MAP

F.A.I. RTE.	SECTION	COUNTY	TOTAL SHEETS	SHEET NO.
94	(42-B-11-1) BR, BJR 24	COOK	761	307
CONTRACT NO. 62W87				
ILLINOIS FED. AID PROJECT				

REV-SEP

MODEL Default
FILE NAME: \\hbm\new\11cs01\CS_01\work_dtl\242901461_890D16X53-shl-pmk\036.dgn



LEGEND

1

SHOULDER RUMBLE STRIPS, 16" (64200116)

2

THERMOPLASTIC PAVEMENT MARKING - LINE 4", WHITE (78000200)

3

THERMOPLASTIC PAVEMENT MARKING - LINE 4", YELLOW (78000200)

4

PREFORMED PLASTIC PAVEMENT MARKING, TYPE D - LINE 5", 10' DASH, 30' SKIP, WHITE (78004625)

5

PREFORMED PLASTIC PAVEMENT MARKING, TYPE D - LINE 4", 2' DASH, 6' SKIP, WHITE (78004620)

6

THERMOPLASTIC PAVEMENT MARKING - LINE 8", WHITE (78000500)

7

THERMOPLASTIC PAVEMENT MARKING - LINE 12", YELLOW, 45°, 500' SPACING (78000600)

8

THERMOPLASTIC PAVEMENT MARKING - LINE 12", WHITE, 45°, 500' SPACING (78000600)

9

THERMOPLASTIC PAVEMENT MARKING - LINE 12", WHITE, CHEVRONS, 30' SPACING (78000600)

10

THERMOPLASTIC PAVEMENT MARKING - LETTERS AND SYMBOLS, WHITE (78000100)

11

PREFORMED PLASTIC PAVEMENT MARKING, TYPE D - LINE 8", 3' DASH, 9' SKIP, WHITE (78004640)

12

MODIFIED URETHANE PAVEMENT MARKING - LINE 4", WHITE (78009004)

13

MODIFIED URETHANE PAVEMENT MARKING - LINE 4", YELLOW (78009004)

14

MODIFIED URETHANE PAVEMENT MARKING - LINE 8", WHITE (78009008)

15

MODIFIED URETHANE PAVEMENT MARKING - LINE 12", WHITE, 45°, 500' SPACING (78009012)

16

MODIFIED URETHANE PAVEMENT MARKING - LINE 12", YELLOW, 45°, 500' SPACING (78009012)

17

MODIFIED URETHANE PAVEMENT MARKING - LINE 12", WHITE, CHEVRON, 30' SPACING (78009012)

18

MODIFIED URETHANE PAVEMENT MARKING - LINE 12", WHITE, 45° (78009012)

19

MODIFIED URETHANE PAVEMENT MARKING - LINE 12", YELLOW, 45° (78009012)

20

PREFORMED PLASTIC PAVEMENT MARKING, TYPE D - LINE 7" CONTRAST, 2' DASH, 6' SKIP, WHITE (78004635)

21

RAISED REFLECTIVE PAVEMENT MARKERS (78100100)

22

PREFORMED PLASTIC PAVEMENT MARKING TYPE D - LINE 8" CONTRAST, 10' DASH, 30' SKIP, WHITE (78004640)

23

MODIFIED URETHANE PAVEMENT MARKING - LINE 8", YELLOW (78009008)

150161094R072.7
STA. 592+23
EXIST. OVERHEAD SIGNS TO REMAIN - TRUSS

EXITS 74 A-B
80 294 394
1 1/2 MILES

EXITS 73 B
6 EAST
159th St
1/4 MILE

EXIT 73 A
6 WEST
159th St

STONY ISLAND AVE
MLK DR
103RD ST
106TH ST
111TH ST
115TH ST
130TH ST
LITTLE CALUMET RIVER
MICHIGAN CITY RD
DOLTON RD
JIL 83
154TH ST
GREENWOOD AVE
US 6 (159TH ST)

1

REVISED SHEET 2/10/2025

KEY MAP

STATE OF ILLINOIS
DEPARTMENT OF TRANSPORTATION

PAVEMENT MARKING PLAN
I-94 (BISHOP FORD EXPY)

SCALE: SHEET 51 OF 56 SHEETS STA. 582+50 TO STA. 596+00

F.A.I. RTE.	SECTION	COUNTY	TOTAL SHEETS	SHEET NO.
94	(42-B-11-1) BR, BJR 24	COOK	761	308
CONTRACT NO. 62W87				
ILLINOIS FED. AID PROJECT				

HBM
ENGINEERING GROUP, LLC

USER NAME = hbmepw11cs01\$
PLOT SCALE = 100,0000 ' / in.
PLOT DATE = 12/10/2024

DESIGNED - FA
DRAWN - FA
CHECKED - AMI
DATE - 12/9/2024

REVISED -
REVISED -
REVISED -
REVISED -

REV-SEP



MODEL: Default
FILE NAME: \\hbmepw11cs01\CS_pdf_work_dir\2649\1426_10160159-62K53-02-WB-GenNotes.dgn

GENERAL NOTES:

1. Reinforcement bars designated (E) shall be epoxy coated.
2. Plan dimensions and details relative to the existing structure have been taken from existing plans and are subject to nominal construction variations. The Contractor shall field-verify existing dimensions and details affecting new construction and make necessary approved adjustments prior to construction or ordering of materials. Such variations shall not be cause for additional compensation for a change in the scope of the work; however, the Contractor will be paid for the quantity actually furnished at the unit price bid for the work.
3. The Contractor may request copies of existing construction plans that are currently on file with the Illinois Department of Transportation (IDOT). The request shall be in writing with the understanding that any reproduction cost will be at the Contractor's expense and at no additional cost to the Department.
4. All exposed concrete edges shall have a ¾" x 45° chamfer except where shown otherwise.
5. Protective coat shall be applied to the top of reconstructed transverse joint areas, top of new latex concrete overlay, and top and inside faces of parapets.
6. Joint openings shall be adjusted according to Article 520.04 of the Standard Specifications when the deck is poured at an ambient temperature other than 50°F.
7. Prior to pouring the new concrete deck, all heavy or loose rust, loose mill scale, and other loose detrimental foreign material shall be removed from the surfaces in contact with concrete (SSPC-SP3 standards). Tightly adhered paint may remain unless otherwise noted. Removal shall be accomplished by methods that will not damage the steel and the cost will be paid for according to Article 109.04 of the Standard Specifications. As directed by the Engineer, existing construction accessories welded to the top flange of beams and girders shall be removed. The weld areas shall be ground flush and inspected for cracks using magnetic particle testing (MT) or dye penetrant testing (PT) by qualified personnel approved by the Engineer. Any cracks that cannot be removed by grinding ¼ inch deep shall be identified and reported to the Bureau of Bridges and Structures for further disposition. The cost of removing welded accessories, grinding and inspecting weld areas and grinding cracks will be paid for according to Article 109.04 of the Standard Specifications.
8. The Contractor shall take all necessary precautions for the protection of passing vessels from falling objects and/or materials until completion of the work.
9. It shall be the Contractor's responsibility to locate and protect any utilities or facilities on, within or under the bridge deck including, but not limited to, under deck lighting, traffic signals or signs attached to the structure. Any damage to existing utilities/facilities caused by the Contractor in the performance of the work shall be repaired by the Contractor, to the satisfaction of the Engineer, at no cost to the Department.
10. The Contractor shall exercise extreme caution during Concrete Removal to avoid damaging the steel beams, stringers, floor beams, truss elements and diaphragms to remain. Any damage to existing elements to remain caused by the Contractor in the performance of the work shall be repaired by the Contractor, to the satisfaction of the Engineer, at no additional cost to the Department.
11. For SMA overlay on Approach Slabs, see Roadway Plans.
12. Adjacent I-94 EB bridge is not shown throughout the plans for clarity.
13. The Contractor is responsible to protect the existing conduit and junction box embedded in the parapet during removal and construction. Any damage to the existing conduit and junction box shall be repaired by the Contractor, to the satisfaction of the Engineer at no additional cost to the Department.
14. Concrete Sealer shall be applied to the designated areas of the abutments and piers (beneath expansion joints only).
15. Prior to the application of the Concrete Sealer, the Contractor shall clean all existing debris from the abutment and pier seats. The method of debris removal shall not damage the existing concrete and shall be approved by the Engineer. See Special Provision for Debris Removal.
16. The Engineer shall show actual locations and sizes of deck repairs on As-built Plans.
17. The Contractor shall obtain Coast Guard approval for any work that may interfere with navigational operations of the navigable waters. A work plan shall be prepared by the Contractor, reviewed and approved by the Engineer and be submitted by the Engineer to Lee Soule (216-902-6085) of the US Coast Guard at Lee.d.soule@uscg.mil for approval at least 2 weeks in advance prior to starting work.

GENERAL NOTES (CONT.):

18. Existing structural steel that will be in contact with new structural steel shall be cleaned and painted prior to erection as required by the Special Provision "Cleaning and Painting Contact Surface Areas of Existing Steel Structures".

INDEX OF SHEETS

- S01-01 General Plan and Elevation
- S01-02 General Notes, Index of Sheets & TBOM
- S01-03 Stage Construction (Sheet 1 of 2)
- S01-04 Stage Construction (Sheet 2 of 2)
- S01-05 Temporary Concrete Barrier
- S01-06 Deck Repair Plan (Sheet 1 of 4)
- S01-07 Deck Repair Plan (Sheet 2 of 4)
- S01-08 Deck Repair Plan (Sheet 3 of 4)
- S01-09 Deck Repair Plan (Sheet 4 of 4)
- S01-10 Drainage Scupper Adjustment Details
- S01-11 N. Abut. Joint Removal & Replacement (Sht. 1 of 3)
- S01-12 N. Abut. Joint Removal & Replacement (Sht. 2 of 3)
- S01-13 N. Abut. Joint Removal & Replacement (Sht. 3 of 3)
- S01-14 Pier 3 Finger Plate Joint Adjustment (Sht. 1 of 2)
- S01-15 Pier 3 Finger Plate Joint Adjustment (Sht. 2 of 2)
- S01-16 Span 4 Panel Pt. 3 Jt. Rem. & Repl. (Sht. 1 of 2)
- S01-17 Span 4 Panel Pt. 3 Jt. Rem. & Repl. (Sht. 2 of 2)
- S01-18 Span 4 Panel Pt. 6 Jt. Rem. & Repl. (Sht. 1 of 2)
- S01-19 Span 4 Panel Pt. 6 Jt. Rem. & Repl. (Sht. 2 of 2)
- S01-20 Span 4 Panel Pt. 3' Jt. Rem. & Repl. (Sht. 1 of 2)
- S01-21 Span 4 Panel Pt. 3' Jt. Rem. & Repl. (Sht. 2 of 2)
- S01-22 Pier 4 Joint Removal & Replacement (Sht. 1 of 2)
- S01-23 Pier 4 Joint Removal & Replacement (Sht. 2 of 2)
- S01-24 S. Abut. Joint Removal & Replacement (Sht. 1 of 3)
- S01-25 S. Abut. Joint Removal & Replacement (Sht. 2 of 3)
- S01-26 S. Abut. Joint Removal & Replacement (Sht. 3 of 3)
- S01-27 Preformed Joint Strip Seal
- S01-28 Partial Framing Plan and Structural Steel Repairs
- S01-29 Structural Steel Repair Details
- S01-30 North Abutment Repairs
- S01-31 South Abutment Repairs
- S01-32 Pier 1 Repairs
- S01-33 Pier 2 Repairs
- S01-34 Pier 3 Repairs
- S01-35 Pier 4 Repairs
- S01-36 Pier 5 Repairs
- S01-37 Pier 6 Repairs
- S01-38 Bar Splicer Assembly and Mechanical Splicer Detail

PROPOSED SCOPE OF WORK

1. Provide protective shield within limits indicated on the plans.
2. Perform Deck Slab Repairs and adjust/extend existing scuppers and inlets as required.
3. Clean Drainage System and perform Bridge Washing.
4. Perform ¾" Bridge Deck scarification.
5. Reconstruct Expansion Joints at the North and South Abutments, Pier 4, and Span 4 Panel Points 3, 6, and 3'.
6. Adjust finger plate joint and replace trough at Pier 3.
7. Apply a 3" bridge deck latex concrete overlay on bridge deck.
8. Perform ¼" diamond grinding to top of bridge deck and abutment hatch block.
9. Perform bridge deck grooving (longitudinal) on traffic lanes.
10. Apply protective coat to the top of reconstructed transverse joint areas, top of new latex concrete overlay and top and inside faces of parapets.
11. Clean existing stringers, bearings, and support/bearing stiffeners at the locations shown on the Plans.
12. Coordinate with IDOT District 1 Bridge Maintenance to have section loss measurements performed at the newly cleaned stringers and support/bearing stiffeners.
13. Perform painting of stringer ends, bearings and support/bearing stiffeners after section loss measurements have been obtained as directed by the Department.
14. Perform diaphragm removal/replacement and structural steel repairs at the locations indicated on the Plans and as directed by the Engineer.
15. Perform structural repair of concrete to all spalled and delaminated areas of the Abutments, Wingwalls and Piers as noted in the plans.

TOTAL BILL OF MATERIAL

ITEM	UNIT	SUPER	SUB	TOTAL
Concrete Removal	Cu Yd	52.0	-	52.0
Protective Shield	Sq Yd	2,859	-	2,859
Concrete Superstructure	Cu Yd	50.0	-	50.0
Protective Coat	Sq Yd	5,532	-	5,532
Furnishing And Erecting Structural Steel	Pound	9,300	-	9,300
Cleaning And Painting Structural Steel, Location 2	L Sum	1	-	1
Reinforcement Bars, Epoxy Coated	Pound	9,560	-	9,560
Bar Splicers	Each	114	-	114
Preformed Joint Strip Seal	Foot	330	-	330
Fabric Reinforced Elastomeric Trough	Foot	56	-	56
Concrete Sealer	Sq Ft	-	4378	4,378
Bridge Washing No. 2	Each	1	-	1
Bridge Deck Grooving (Longitudinal)	Sq Yd	3,172	-	3,172
Containment And Disposal Of Non-Lead Paint Cleaning Residues No. 2	L Sum	1	-	1
Deck Drain Extensions	Each	28	-	28
Structural Steel Removal	Pound	280	-	280
Structural Steel Repair	Pound	410	-	410
Bridge Deck Latex Concrete Overlay, 3 Inches	Sq Yd	4,471	-	4,471
Cleaning Drainage System	L Sum	0.33	-	0.33
Bridge Deck Scarification 3/4"	Sq Yd	4,471	-	4,471
Structural Repair Of Concrete (Depth Equal To Or Less Than 5 Inches)	Sq Ft	-	140	140
Deck Slab Repair (Full Depth, Type I)	Sq Yd	0.5	-	0.5
Deck Slab Repair (Full Depth, Type II)	Sq Yd	12	-	12
Drainage Scuppers To Be Adjusted	Each	28	-	28
Diamond Grinding (Bridge Section)	Sq Yd	4,262	-	4,262
Temporary Shoring And Cribbing	Each	-	2	2

PAINT NOTES:

1. Existing Structural steel that will be in contact with new structural steel shall be cleaned and painted prior to erection as required by the Special Provision "Cleaning and Painting Contact Surface Areas of Existing Steel Structures," and the Standard Specifications. The color of the final finish coat shall be Gray, Munsell No. 5B 7/1. Cost included with Structural Steel Repair.
2. Cleaning and painting of the existing structural steel shall be as specified in the Special Provision for "Cleaning and Painting Existing Steel Structures" and as shown in the Plans. All beams, bearings and other structural steel within 5 ft (measured along the beam) of the south side of the deck joint shall be cleaned per Near-White Blast Cleaning (SSPC-SP10).
3. The designated areas cleaned per Near-White Blast Cleaning (SSPC-SP10) shall be painted according to the requirements of the Organic Zinc-Rich Primer/Epoxy Intermediate Coat/Urethane Top Coat (0Z/E/U) Paint System. The color of the final finish coat for all interior steel surfaces shall be Gray, Munsell No. 5B 7/1.
4. Containment of cleaning residue is required to control nuisance dust. See Special Provisions.
5. SSPC QP1 Certification is required for this contract.



REVISED ENTIRE SHEET 2/18/2025



USER NAME =	hbmepw11cs01\$	DESIGNED -	LR, AWD	REVISED -	
		DRAWN -	LR, AWD	REVISED -	
PLOT SCALE =	0:2.0000 " = 1 in.	CHECKED -	MI, JJS	REVISED -	
PLOT DATE =	1/24/2025	DATE -	12/9/2024	REVISED -	

STATE OF ILLINOIS
DEPARTMENT OF TRANSPORTATION

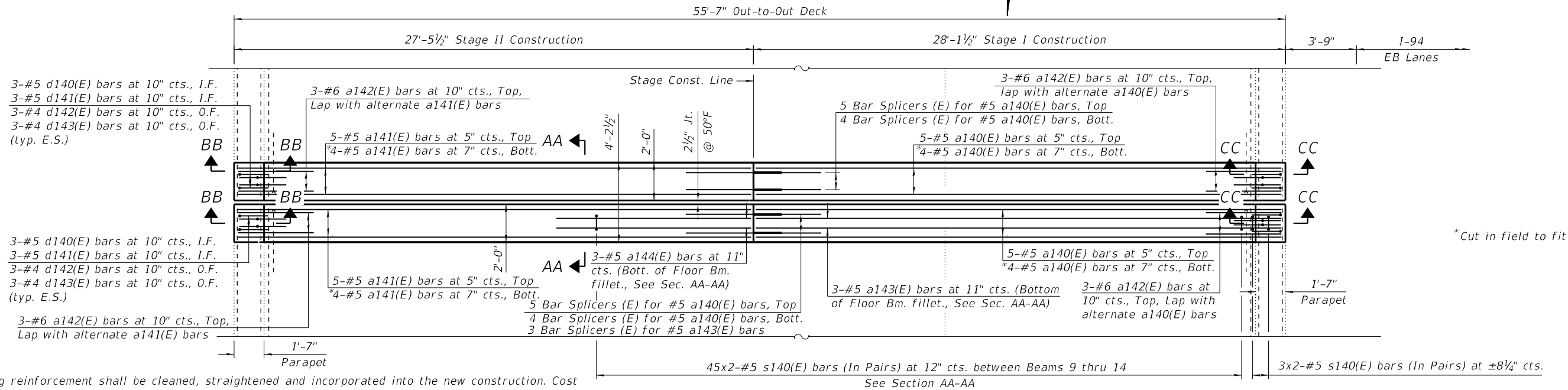
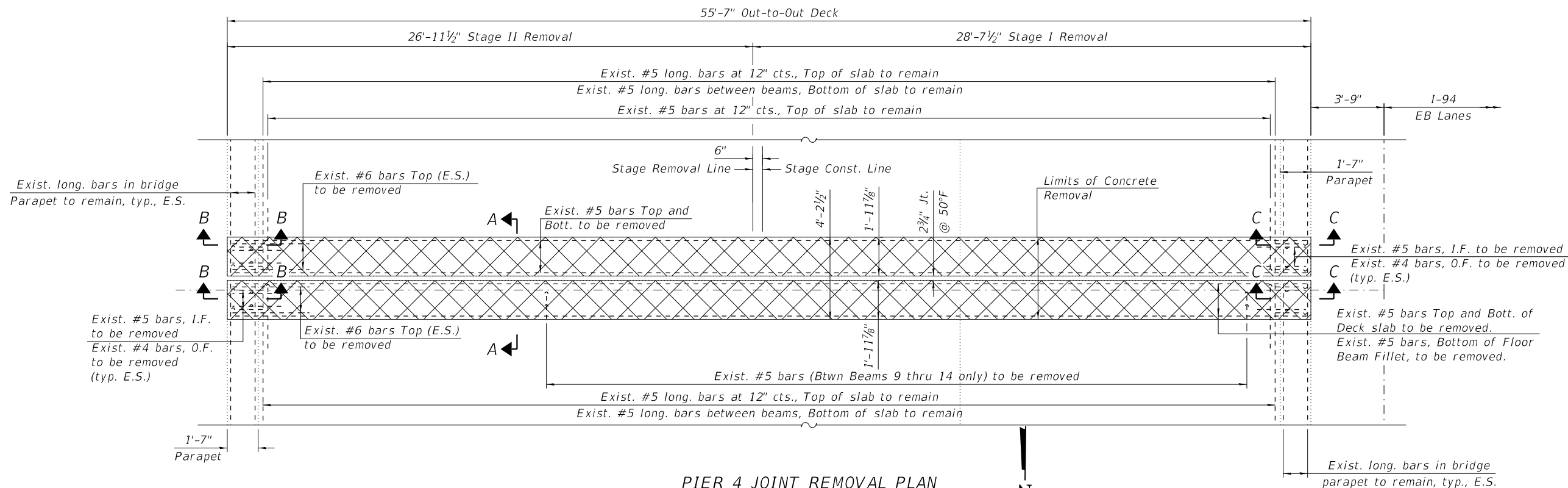
GENERAL NOTES, INDEX OF SHEETS & TBOM
STRUCTURE NO. 016-0159

SHEET S01-02 OF S01-38 SHEETS

F.A.I. RTE.	SECTION	COUNTY	TOTAL SHEETS	SHEET NO.
94	(42-B-11-1) BR, BJR 24	COOK	761	460
			CONTRACT NO. 62W87	
		ILLINOIS	FED. AID PROJECT	

1

MODEL: Default
FILE NAME: pw:\hbmeng-pw.bentley.com\hbmeng-pw-01\Documents\22002207-309\04-SOUTH_CONTRACT\01-DGN\12-SHT\16-Structures\016-0159\0160159-62K53-22-WB-Pier4Joint(Sht. 1 of 2).dgn



NOTES:

- Existing reinforcement shall be cleaned, straightened and incorporated into the new construction. Cost included with Concrete Removal.
- Any reinforcement bars that are damaged during Concrete Removal operations shall be replaced using an approved bar splicer or anchorage system. Cost incidental to "Concrete Removal".
- Dimensions are based on a Rolled Rail Strip Seal Joint. If the Contractor elects to use the Welded Rail Strip Seal Joint, deck dimensions may require adjustments to satisfy the details on Sheet S01-27.
- For Sections A-A, B-B, C-C, AA-AA, BB-BB, and CC-CC, Bar Diagrams and Bill of Material, see Sheet S01-23.
- For preformed joint strip seal details, see Sheet S01-27.
- For bar splicer assembly details, see Sheet S01-38.
- Removal and disposal of existing expansion joint shall be included with Concrete Removal.

LEGEND

	Concrete Removal
E.F.	Each Face
I.F.	Inside Face
O.F.	Outside Face
E.S.	Each Side
E.E.	Each End

HBM
ENGINEERING GROUP, LLC

USER NAME	= adam.daoud	DESIGNED	- LR	REVISED	-
		DRAWN	- LR	REVISED	-
PLOT SCALE	= 6:0.0000 " / in.	CHECKED	- MI, JJS	REVISED	-
PLOT DATE	= 12/6/2024	DATE	- 12/9/2024	REVISED	-

STATE OF ILLINOIS
DEPARTMENT OF TRANSPORTATION

PIER 4 JOINT REMOVAL & REPLACEMENT (SHT. 1 OF 2)
STRUCTURE NO. 016-0159

SHEET S01-22 OF S01-38 SHEETS

F.A.I. RTE.	SECTION	COUNTY	TOTAL SHEETS	SHEET NO.
94	(42-B-11-1) BR, BJR 24	COOK	761	480
CONTRACT NO. 62W87				
ILLINOIS FED. AID PROJECT				