

STATE OF ILLINOIS
DEPARTMENT OF TRANSPORTATION

F.A.P. RTE.	SECTION	COUNTY	TOTAL SHEETS	SHEET NO.
750	(114)B-1	FAYETTE	28	1
		ILLINOIS	CONTRACT NO. 74327	

D-97-042-08

FOR INDEX OF SHEETS, SEE SHEET NO. 2

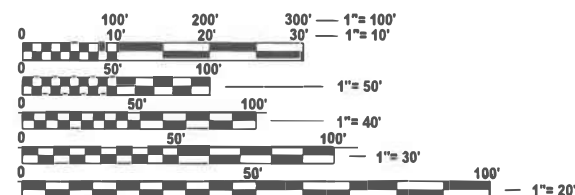
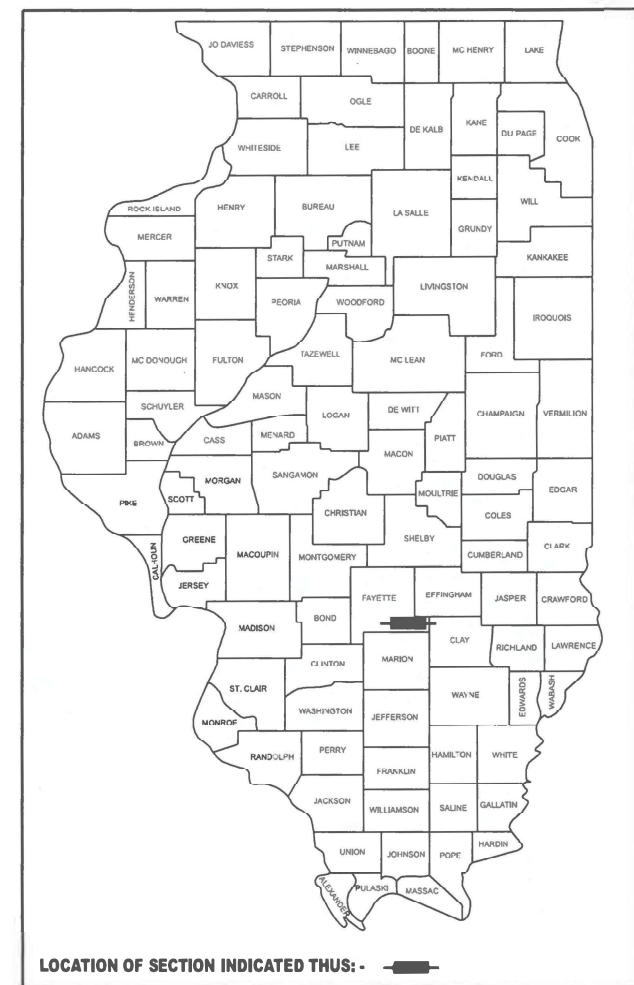
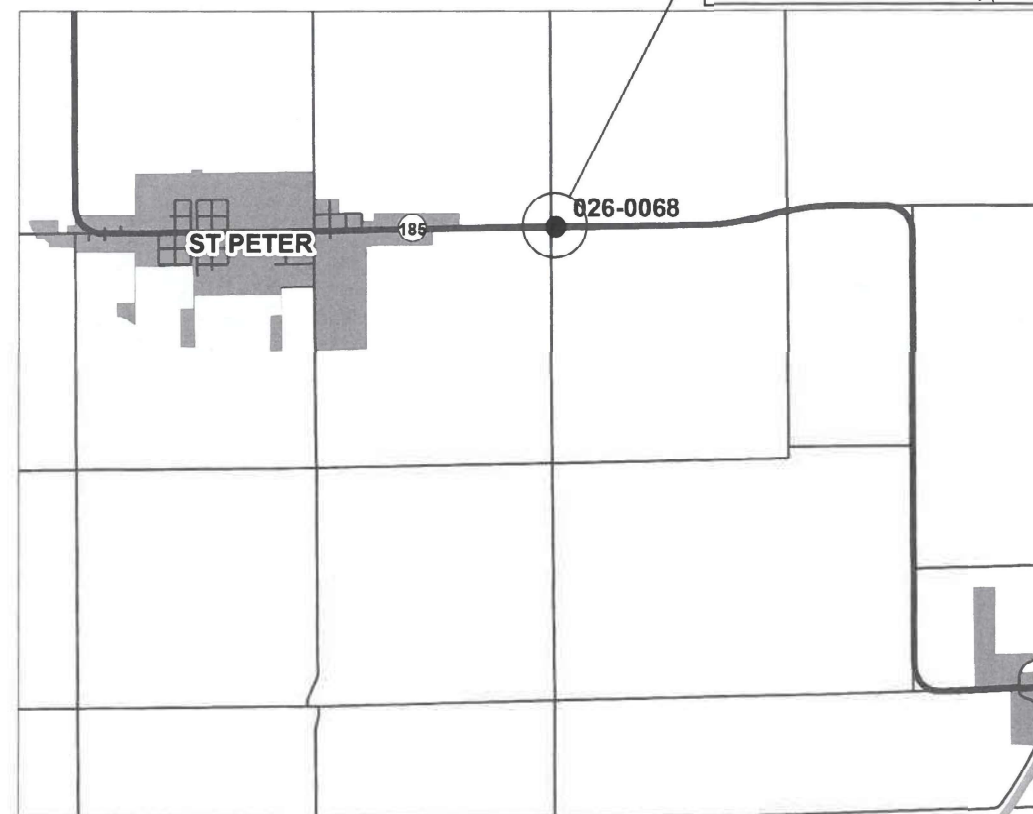
ADT = 1450 (2025)
 ADDT = 225 (2025)

PROPOSED HIGHWAY PLANS

FAP ROUTE 750 (ILL 185)
SECTION (114)B-1
PROJECT HBIP-F9K2(491)
BRIDGE REPLACEMENT
FAYETTE COUNTY

C-97-090-08

PROJECT LOCATION
EXISTING SN 026-0068
PROPOSED SN 026-2023
STATION 780+14.00



FULL SIZE PLANS HAVE BEEN PREPARED USING STANDARD
 ENGINEERING SCALES. REDUCED SIZED PLANS WILL NOT
 CONFORM TO STANDARD SCALES. IN MAKING MEASUREMENTS
 ON REDUCED PLANS, THE ABOVE SCALES MAY BE USED.

J.U.L.I.E.
 JOINT UTILITY LOCATION INFORMATION FOR EXCAVATION
 1-800-892-0123
 OR 811

PROJECT ENGINEER: MATTHEW BOWER
PROJECT MANAGER: TRAVIS WALK

CONTRACT NO. 74327

GROSS LENGTH = 29.4 FT.
 NET LENGTH = 29.4 FT.

STATE OF ILLINOIS
DEPARTMENT OF TRANSPORTATION

SUBMITTED 12/11 2024
Jeffrey P. Myrka REGIONAL ENGINEER

January 31, 2025
Scott A. Etkin ENGINEER OF DESIGN AND ENVIRONMENT

January 31, 2025
Chadley 5 DIRECTOR OF HIGHWAYS PROJECT IMPLEMENTATION

**PRINTED BY THE AUTHORITY
 OF THE STATE OF ILLINOIS**

GENERAL NOTES

SHORT TERM PAVEMENT MARKINGS SHALL BE TAPE.

INDEX OF SHEETS

SHEET NO.	ITEM
1	COVER SHEET
2	INDEX OF SHEETS, LIST OF STANDARDS, AND GENERAL NOTES
3-4	SUMMARY OF QUANTITIES
5-6	TYPICAL SECTIONS
7	SCHEDULE OF QUANTITIES
8-12	PLAN SHEETS
13-24	STRUCTURE PLANS
25	GUARDRAIL DETAILS
26-28	CROSS SECTION SHEETS

THE FOLLOWING STANDARDS ARE A PART OF THESE PLANS AND ARE INCLUDED AFTER SHEET NO. 28:

STANDARD NO.	DESCRIPTION
000001-08	STANDARD SYMBOLS, ABBREVIATIONS AND PATTERNS
001001-02	AREAS OF REINFORCEMENT BARS
001006	DECIMAL OF AN INCH AND OF A FOOT
420001-10	PAVEMENT JOINTS
420101-07	24' JOINTED PCC PAVEMENT
483001-06	PCC SHOULDER
515001-04	NAME PLATE FOR BRIDGES
630001-13	STEEL PLATE BEAM GUARDRAIL
630101-11	STRONG POST GUARDRAIL ATTACHED TO CULVERT
630301-09	SHOULDER WIDENING FOR TYPE I (SPECIAL) GUARDRAIL TERMINALS
631011-10	TRAFFIC BARRIER TERMINAL, TYPE 2
701001-02	OFF-ROAD OPERATIONS, 2L, 2W, MORE THAN 15' AWAY
701006-05	OFF-ROAD OPERATIONS, 2L, 2W, 15' TO 24" FROM PAVEMENT EDGE
701011-04	OFF-ROAD MOVING OPERATIONS, 2L, 2W, DAY ONLY
701201-05	LANE CLOSURE, 2L, 2W, DAY ONLY, FOR SPEEDS ≥ 45 MPH
701301-04	LANE CLOSURE, 2L, 2W, SHORT TIME OPERATIONS
701311-03	LANE CLOSURE, 2L, 2W, MOVING OPERATIONS - DAY ONLY
701321-19	LANE CLOSURE, 2L, 2W, BRIDGE REPAIR WITH BARRIER
701326-04	LANE CLOSURE, 2L, 2W, PAVEMENT WIDENING ≥ 45 MPH
701901-10	TRAFFIC CONTROL DEVICES
704001-08	TEMPORARY CONTROL DEVICES
725001-01	OBJECT AND TERMINAL MARKERS
780001-05	TYPICAL PAVEMENT MARKINGS
782006-01	GUARDRAIL AND BARRIER WALL REFLECTOR MOUNTING TYPICAL
B.L.R. 21-9	APPLICATION OF TRAFFIC CONTROL DEVICES FOR CONSTRUCTION ON RURAL LOCAL HIGHWAYS

REV - MS

MODEL: Untitled [Sheet]
FILE NAME: c:\p\work\pvt\trwalkm\40985650\0774327-shl-genrnote.dgn

	USER NAME = Travis.Walk	DESIGNED - T. WALK	REVISED -	STATE OF ILLINOIS DEPARTMENT OF TRANSPORTATION	INDEX OF SHEETS, GENERAL NOTES, & LIST OF STANDARDS		F.A.P. RTE.	SECTION	COUNTY	TOTAL SHEETS	SHEET NO.
		DRAWN - T. WALK	REVISED -				750	(114)B-1	FAYETTE	28	2
		CHECKED -	REVISED -				CONTRACT NO. 74327				
	PLOT DATE = 11/19/2024	DATE -	REVISED -		SCALE:	SHEET 1 OF 1 SHEETS	STA.	TO STA.	ILLINOIS FED. AID PROJECT		

MODEL: SQQ [Sheet]
FILE NAME: c:\pw\work\pwwalkm\4098850\D74327-sh1-sqq.dgn

				80% FED 20% STATE
				CONSTR. CODE
CODE NO.	ITEM	UNIT	TOTAL QUANTITY	NONE
				0010
				RURAL
20200500	EARTH EXCAVATION (WIDENING)	CU YD	188	188
20300100	CHANNEL EXCAVATION	CU YD	377	377
20700110	POROUS GRANULAR EMBANKMENT	TON	668	668
28100109	STONE RIPRAP, CLASS A5	SQ YD	160	160
28200200	FILTER FABRIC	SQ YD	160	160
35300500	PORTLAND CEMENT CONCRETE BASE COURSE 10"	SQ YD	676	676
42000501	PORTLAND CEMENT CONCRETE PAVEMENT 10" (JOINTED)	SQ YD	294	294
44000100	PAVEMENT REMOVAL	SQ YD	294	294
44004250	PAVED SHOULDER REMOVAL	SQ YD	485	485
48102100	AGGREGATE WEDGE SHOULDER, TYPE B	TON	59	59
48300500	PORTLAND CEMENT CONCRETE SHOULDERS 10"	SQ YD	172	172
50100100	REMOVAL OF EXISTING STRUCTURES	EACH	1	1
50200450	REMOVAL AND DISPOSAL OF UNSUITABLE MATERIAL FOR STRUCTURES	CU YD	149	149
50800105	REINFORCEMENT BARS	POUND	43250	43250

* SPECIALTY ITEM

				80% FED 20% STATE
				CONSTR. CODE
CODE NO.	ITEM	UNIT	TOTAL QUANTITY	NONE
				0010
				RURAL
50800515	BAR SPLICERS	EACH	145	145
51500100	NAME PLATES	EACH	1	1
52200020	TEMPORARY SOIL RETENTION SYSTEM	SQ FT	274	274
54003000	CONCRETE BOX CULVERTS	CU YD	178.9	178.9
59100100	GEOCOMPOSITE WALL DRAIN	SQ YD	192	192
* 63000001	STEEL PLATE BEAM GUARDRAIL, TYPE A, 6 FOOT POSTS	FOOT	162.5	162.5
* 63000007	STEEL PLATE BEAM GUARDRAIL, TYPE B, 6 FOOT POSTS	FOOT	50	50
* 63000030	STRONG POST GUARDRAIL ATTACHED TO CULVERT	FOOT	69	69
* 63100045	TRAFFIC BARRIER TERMINAL, TYPE 2	EACH	2	2
* 63100167	TRAFFIC BARRIER TERMINAL, TYPE 1 (SPECIAL) TANGENT	EACH	2	2
63200310	GUARDRAIL REMOVAL	FOOT	352	352
67000400	ENGINEER'S FIELD OFFICE, TYPE A	CAL MO	9	9
67100100	MOBILIZATION	L SUM	1	1
70100405	TRAFFIC CONTROL AND PROTECTION, STANDARD 701321	EACH	1	1

REV - MS

	USER NAME = Travis.Walk	DESIGNED - T. WALK	REVISED -	STATE OF ILLINOIS DEPARTMENT OF TRANSPORTATION	SUMMARY OF QUANTITIES					F.A.P RTE.	SECTION	COUNTY	TOTAL SHEETS	SHEET NO.
		DRAWN - T. WALK	REVISED -							750	(114)B-1	FAYETTE	28	3
		CHECKED -	REVISED -		CONTRACT NO. 74327									
	PLOT DATE = 12/10/2024	DATE -	REVISED -		SCALE:	SHEET 1	OF 2	SHEETS	STA.	TO STA.				
											ILLINOIS FED. AID PROJECT			

80% FED
20% STATE

CODE NO.	ITEM	UNIT	TOTAL QUANTITY	CONSTR. CODE
				NONE
				0010
				RURAL
70100450	TRAFFIC CONTROL AND PROTECTION, STANDARD 701201	L SUM	1	1
70100500	TRAFFIC CONTROL AND PROTECTION, STANDARD 701326	L SUM	1	1
70103815	TRAFFIC CONTROL SURVEILLANCE	CAL DA	3	3
70106500	TEMPORARY BRIDGE TRAFFIC SIGNALS	EACH	1	1
70107005	PAVEMENT MARKING BLACKOUT TAPE, 5"	FOOT	884	884
70107025	CHANGEABLE MESSAGE SIGN	CAL DA	28	28
70300100	SHORT TERM PAVEMENT MARKING	FOOT	112	112
70300150	SHORT TERM PAVEMENT MARKING REMOVAL	SQ FT	361	361
70300221	TEMPORARY PAVEMENT MARKING - LINE 4"- PAINT	FOOT	1796	1796
70400100	TEMPORARY CONCRETE BARRIER	FOOT	368	368
70400125	PINNING TEMPORARY CONCRETE BARRIER	EACH	33	33
70400200	RELOCATE TEMPORARY CONCRETE BARRIER	FOOT	342	342
70600250	IMPACT ATTENUATORS, TEMPORARY (NON- REDIRECTIVE), TEST LEVEL 3	EACH	2	2
70600350	IMPACT ATTENUATORS, RELOCATE (NON- REDIRECTIVE), TEST LEVEL 3	EACH	2	2

* SPECIALTY ITEM

80% FED
20% STATE

CODE NO.	ITEM	UNIT	TOTAL QUANTITY	CONSTR. CODE
				NONE
				0010
				RURAL
* 72501000	TERMINAL MARKER - DIRECT APPLIED	EACH	4	4
* 78001110	PAINT PAVEMENT MARKING - LINE 4"	FOOT	1796	1796
* 78200005	GUARDRAIL REFLECTORS, TYPE A	EACH	8	8
X2501000	SEEDING, CLASS 2 (SPECIAL)	ACRE	0.25	0.25
X5810103	MEMBRANE WATERPROOFING SYSTEM FOR BURIED STRUCTURES	SQ YD	192	192
* X6330725	STEEL PLATE BEAM GUARDRAIL (SHORT RADIUS)	FOOT	50	50
X7011800	TRAFFIC CONTROL AND PROTECTION, STANDARD BLR 21	L SUM	1	1
* Z0054517	ROCK FILL - FOUNDATION	TON	268	268
Z0073351	TEMPORARY SLAB SUPPORT SYSTEM	L SUM	1	1

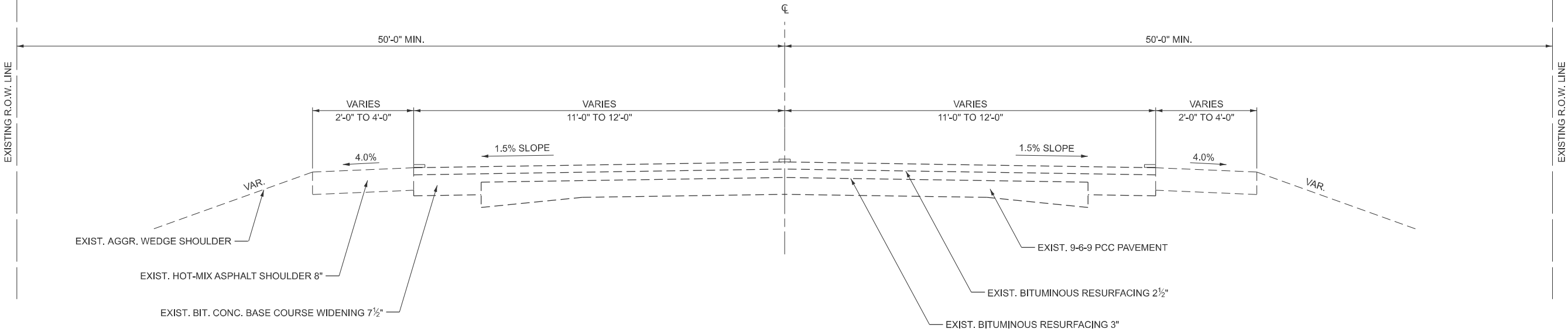
REV - MS

MODEL: SQCL-1 [Sheet]
FILE NAME: c:\pw_work\pw\td\walk\m\0986850\0714327-shl-sqo.dgn

	USER NAME = Travis.Walk	DESIGNED - T. WALK	REVISED -	STATE OF ILLINOIS DEPARTMENT OF TRANSPORTATION	SUMMARY OF QUANTITIES			F.A.P RTE.	SECTION	COUNTY	TOTAL SHEETS	SHEET NO.
		DRAWN - T. WALK	REVISED -					750	(114)B-1	FAYETTE	28	4
		CHECKED -	REVISED -					CONTRACT NO. 74327				
	PLOT DATE = 12/10/2024	DATE -	REVISED -		SCALE:	SHEET 2	OF 2 SHEETS	STA.	TO STA.	ILLINOIS FED. AID PROJECT		

ILL 185 EXISTING TYPICAL CROSS SECTION

STA. 778+00 TO STA. 782+20



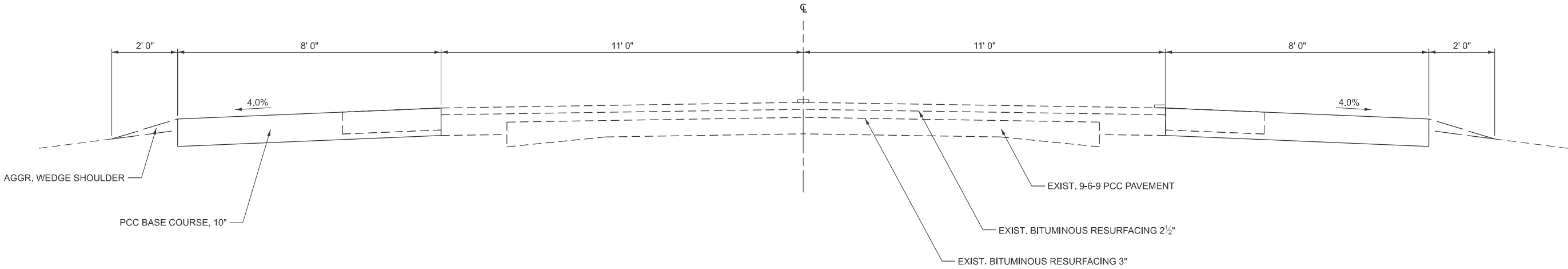
NOTE: NOT DRAWN TO SCALE

MODEL: Existing Typical Section [Sheet]
FILE NAME: c:\p\work\pwalk\mtd098650\0774327-sht-typical.s.dgn

	USER NAME = Travis.Walk	DESIGNED - T. WALK	REVISED -	STATE OF ILLINOIS DEPARTMENT OF TRANSPORTATION	EXISTING TYPICAL SECTION			F.A.P RTE.	SECTION	COUNTY	TOTAL SHEETS	SHEET NO.
		DRAWN - T. WALK	REVISED -					750	(114)B-1	FAYETTE	28	5
		CHECKED -	REVISED -					CONTRACT NO. 74327				
	PLOT DATE = 12/10/2024	DATE -	REVISED -		SCALE:	SHEET 1	OF 2 SHEETS	STA.	TO STA.	ILLINOIS FED. AID PROJECT		

ILL 185 PROPOSED TYPICAL CROSS SECTION

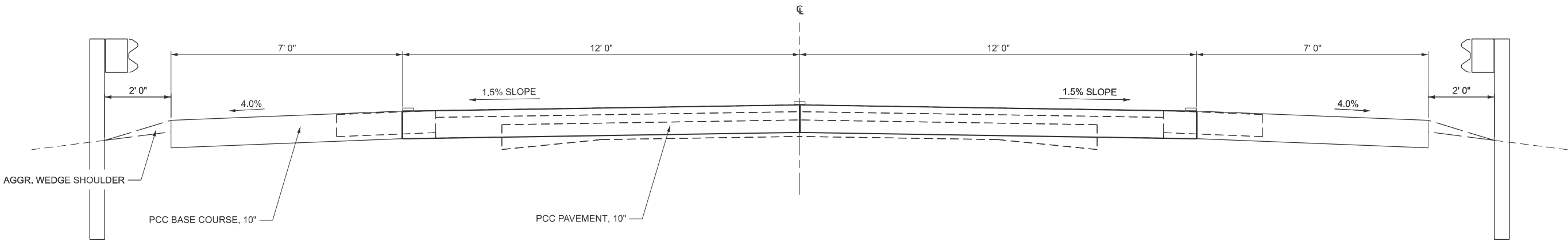
LT. STA. 778+00 TO STA. 779+49
LT. STA. 780+59 TO STA. 782+20
RT. STA. 777+85 TO STA. 779+49
RT. STA. 780+59 TO STA. 782+35



NOTE: NOT DRAWN TO SCALE

ILL 185 PROPOSED TYPICAL CROSS SECTION

STA. 779+49 TO STA. 780+59



NOTE: NOT DRAWN TO SCALE

MODEL: Proposed Typical Sections [Sheet]
FILE NAME: c:\p\work\walk\m0098650\074327-sh1-typicals.dgn

USER NAME = Travis.Walk	DESIGNED - T. WALK	REVISED -
	DRAWN - T. WALK	REVISED -
	CHECKED -	REVISED -
PLOT DATE = 12/10/2024	DATE -	REVISED -

STATE OF ILLINOIS
DEPARTMENT OF TRANSPORTATION

PROPOSED TYPICAL SECTIONS			
SCALE:	SHEET 2	OF 2	SHEETS
STA.	TO STA.		

F.A.P. RTE.	SECTION	COUNTY	TOTAL SHEETS	SHEET NO.
750	(114)B-1	FAYETTE	28	6
CONTRACT NO. 74327				
ILLINOIS FED. AID PROJECT				

SUGGESTED SEQUENCE OF OPERATIONS:

CONSTRUCT WIDENING FOR STAGE 1
INSTALL TRAFFIC CONTROL STANDARD 701321
CONSTRUCT NORTH PORTION OF BOX CULVERT
CONSTRUCT PAVEMENT AND SHOULDER FOR WESTBOUND
CONSTRUCT WIDENING FOR STAGE 2
INSTALL GUARDRAIL ON NORTH SIDE OF ROAD
RELOCATE BARRIER FOR STAGE 2 AND MOVE TRAFFIC TO NEW PAVEMENT
CONSTRUCT SOUTH PORTION OF BOX CULVERT
CONSTRUCT PAVEMENT AND SHOULDER FOR EASTBOUND
INSTALL GUARDRAIL ON SOUTH SIDE OF ROAD
REMOVE BARRIER AND RESTORE TWO-WAY TRAFFIC
CONSTRUCT RIP RAP AND PAVEMENT MARKING

EARTHWORK SCHEDULE				
		EXCAVATION TO BE USED IN EMBANKMENT		EARTHWORK BALANCE
LOCATION	EARTH EXCATION	ADJUSTED FOR SHRINKANGE	EMBANKMENT	WASTE(+) SHORTAGE (-)
	CU YD	CU YD	CU YD	CU YD
EARTH EXCAVATION WIDENING	188	141		141
REM. & DISP. UNSUITABLE MATL.	149	112		112
CHANNEL EXCAVATION	377	283		283
TOTALS	714	536	0	536

				PAVEMENT MARKING BLACKOUT TAPE, 5"
LINE TYPE/ LOCATION	STATION	TO	STATION	70107005 (FOOT)
STAGE 1				
SD CL	775+93		778+71	69.5
RT EL	777+85		782+25	440.0
SD CL	781+34		783+91	64.3
STAGE 2				
LT EL	778+00		779+49	149.0
LT EL	780+59		782+20	161.0
			TOTAL	884.0

SD = SKIP DASH
EL = EDGE LINE

					SHORT TERM PAVEMENT MARKING REMOVAL
LINE TYPE/ LOCATION	STATION	TO	STATION	LENGTH (FOOT)	70300150 (SQ FT)
STAGE 1					
SD CL	775+93		778+71	69.5	29.0
RT EL	777+85		779+49	164.0	68.3
RT EL	780+59		782+25	166.0	69.2
SD CL	781+34		783+91	64.3	26.8
STAGE 2					
LT EL	778+00		779+49	149.0	62.1
LT EL	780+59		782+20	161.0	67.1
			TOTAL		323.0

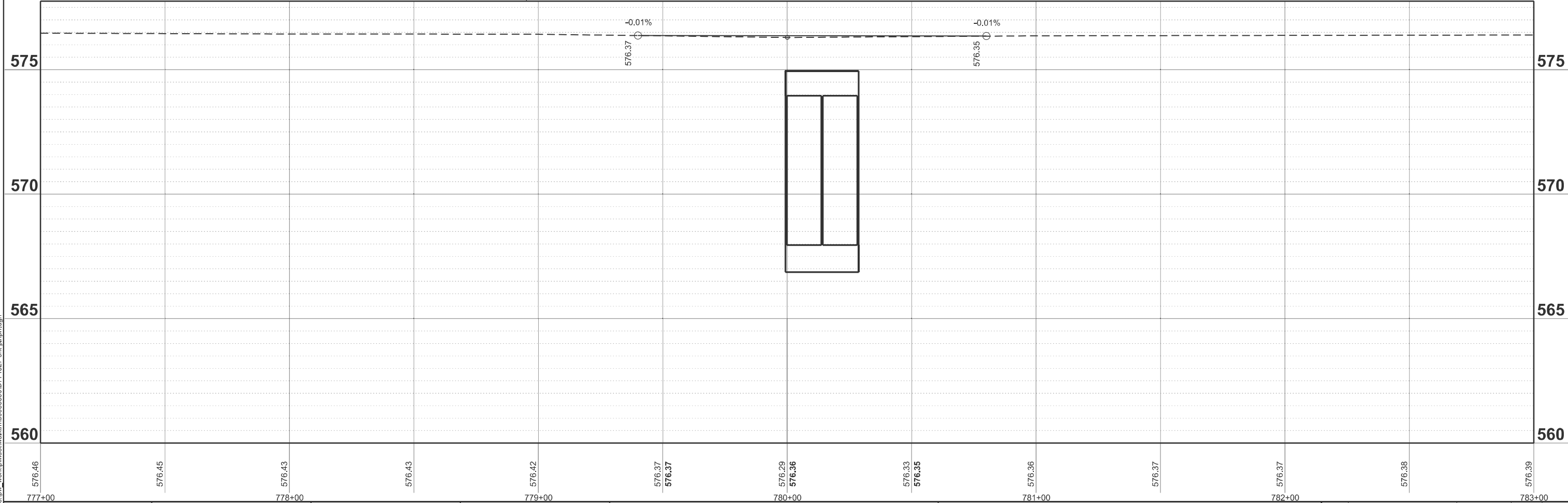
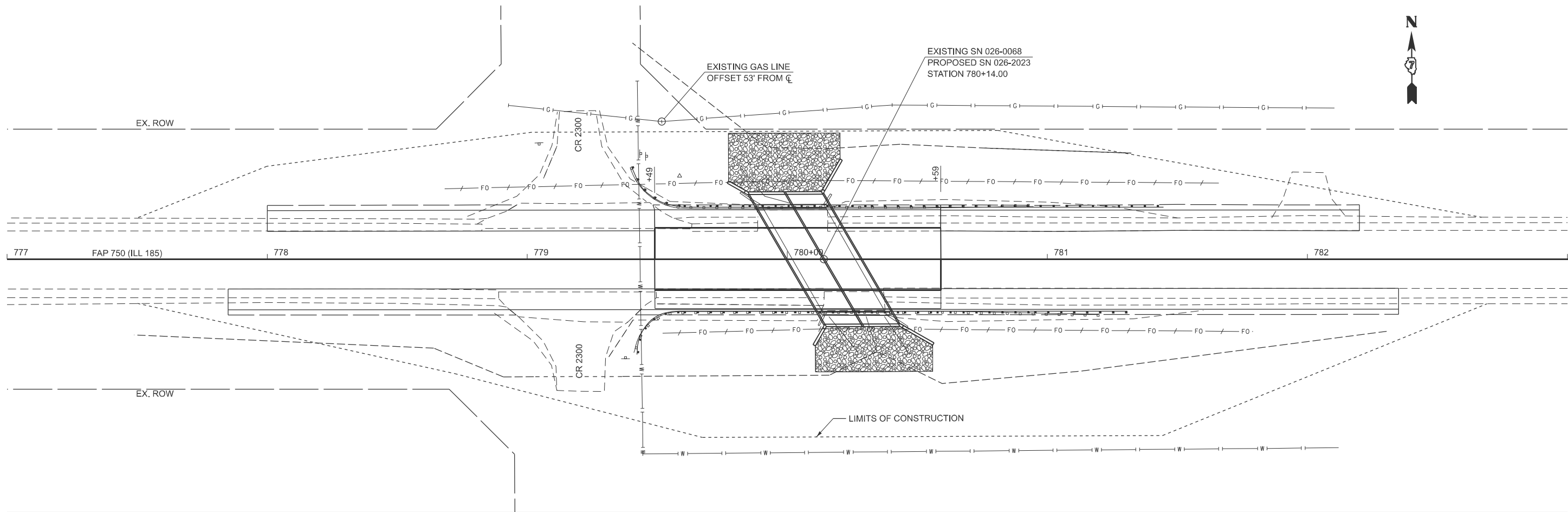
LINE/SD/NPZ	LT/RT/CL	LOCATION				LENGTH	STRIPE WIDTH	NUMBER OF STRIPES	SHORT TERM PAVEMENT MARKING		SHORT TERM PAVEMENT MARKING REMOVAL		TEMPORARY PAVEMENT MARKING - LINE 4" - PAINT		PAINT PAVEMENT MARKING - LINE 4"	
									WHITE	YELLOW			WHITE	YELLOW	WHITE	YELLOW
									70300100		70300150		70300221		78001110	
			STATION	TO	STATION				(FOOT)	(INCH)	(FOOT)	(SQ FT)	(FOOT)	(FOOT)		
LINE	LT & RT	EL	775+93		783+91	798.00	4.00	2.00	32.0		11.0		1,596.0		1,596.0	
SD	CL	CL	775+93		783+91	798.00	4.00	0.25		80.0		27.0		200.0		200.0
TOTAL									112.0		38.0		1,796.0		1,796.0	

SEEDING, CLASS 2 (SPECIAL)	
STA. 779+49 TO 780+59	0.25 ACRE

MODEL: Untitled [Sheet]
FILE NAME: c:\pjk_work\pwalk\mk\0986850\D714327-sjt-schedule.dgn

	USER NAME = Travis.Walk	DESIGNED - T. WALK	REVISED -	STATE OF ILLINOIS DEPARTMENT OF TRANSPORTATION	SCHEDULES				F.A.P RTE.	SECTION	COUNTY	TOTAL SHEETS	SHEET NO.
		DRAWN - T. WALK	REVISED -						750	(114)B-1	FAYETTE	28	7
		CHECKED -	REVISED -						CONTRACT NO. 74327				
	PLOT DATE = 12/10/2024	DATE -	REVISED -		SCALE:	SHEET 1	OF 1	SHEETS	STA.	TO STA.	ILLINOIS FED. AID PROJECT		

MODEL: EXCL - Plan 1 (Sheet)
FILE NAME: c:\pwy\work\td\walkm\0986850\0714327-sht-e-plnprf.dgn



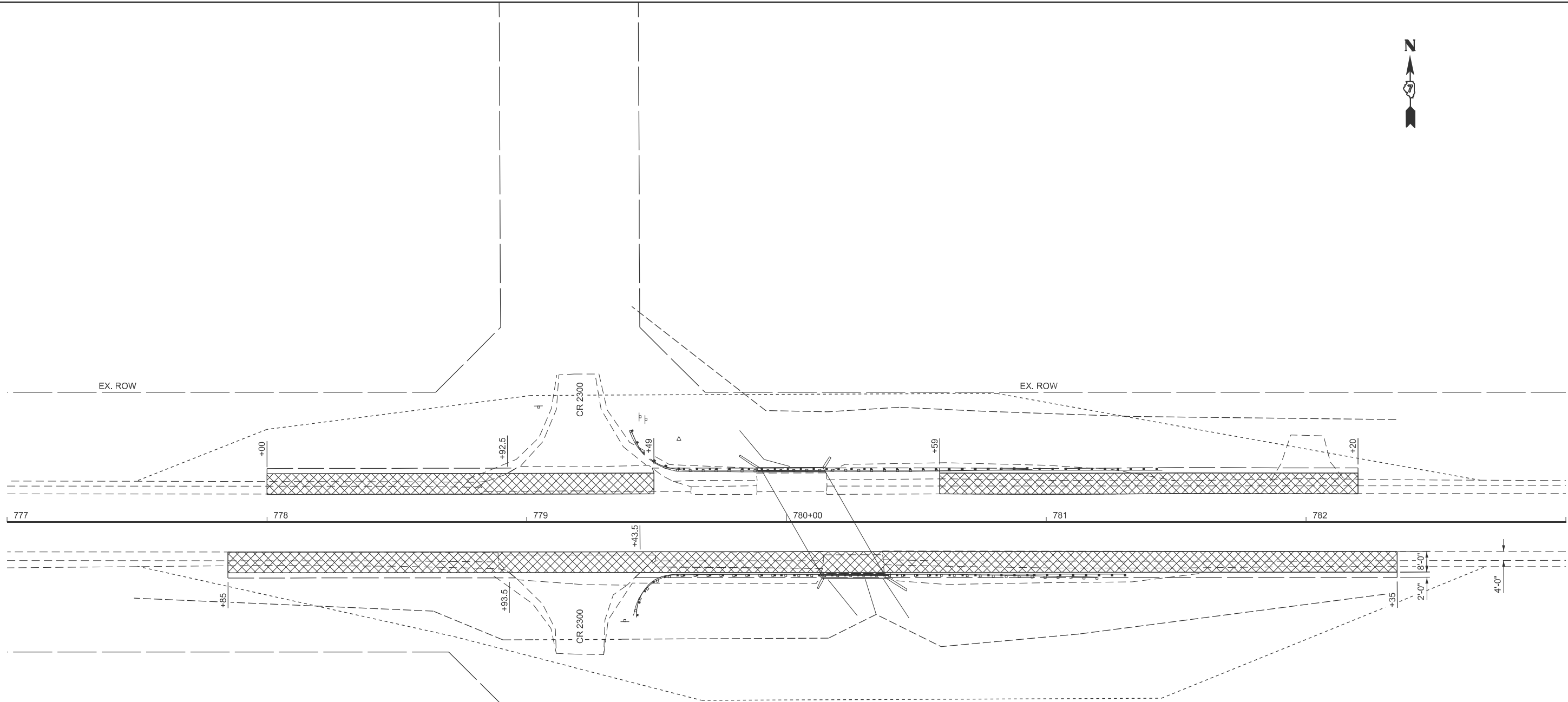
PLOT DATE = 11/13/2024	USER NAME = Travis.Walk	DESIGNED - T. WALK	REVISED -
		DRAWN - T. WALK	REVISED -
		CHECKED -	REVISED -
	DATE -		REVISED -

STATE OF ILLINOIS
DEPARTMENT OF TRANSPORTATION

PLAN & PROFILE
SN 026-2023

SCALE: 1"=20' SHEET 1 OF 1 SHEETS STA. 777+00.00 TO STA. 783+00.00

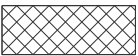
F.A.P. RTE.	SECTION	COUNTY	TOTAL SHEETS	SHEET NO.
750	(114)B-1	FAYETTE	28	8
CONTRACT NO. 74327				
ILLINOIS FED. AID PROJECT				



STAGE 1 PAVED SHOULDER REMOVAL					
STATIONING		SIDE	WIDTH (FOOT)	LENGTH (FOOT)	AREA (SQ YD)
777+85	782+35	RT	4	450.0	200.0
778+00	782+20	LT	4	420.0	186.7
TOTAL					387

PORTLAND CEMENT CONCRETE BASE COURSE 10"					
STATIONING		SIDE	WIDTH (FOOT)	LENGTH (FOOT)	AREA (SQ YD)
777+85	782+35	RT	8	450.0	400.0
778+00	779+49	LT	8	149.0	132.4
780+59	782+20	LT	8	161.0	143.1
TOTAL					676

STAGE 1 AGGREGATE WEDGE SHOULDER, TYPE B						
			WIDTH	LENGTH	DEPTH	WEIGHT
STATIONING		SIDE	(FOOT)	(FOOT)	(FOOT)	(TON)
777+85	778+94	RT	2	109.0	0.5	8.3
779+43	782+35	RT	2	292.0	0.5	22.2
778+00	778+93	LT	2	93.0	0.5	7.1
780+59	782+20	LT	2	161.0	0.5	12.2
					TOTAL	50



P.C.C. BASE COURSE 10"

MODEL: EXCL - Widening Details (Sheet)
FILE NAME: c:\p\work\pwalk\walkm\0986850\0774327-sht-details-widening.dgn

USER NAME	= Travis.Walk	DESIGNED	- T. WALK	REVISED	-
		DRAWN	- T. WALK	REVISED	-
		CHECKED	-	REVISED	-
PLOT DATE	= 12/5/2024	DATE	-	REVISED	-





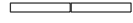



STATE OF ILLINOIS
DEPARTMENT OF TRANSPORTATION

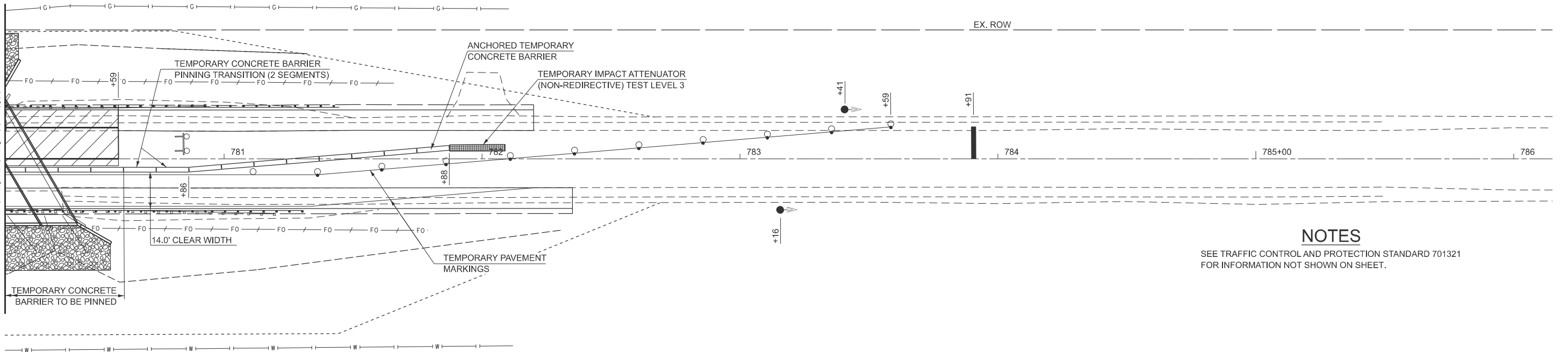
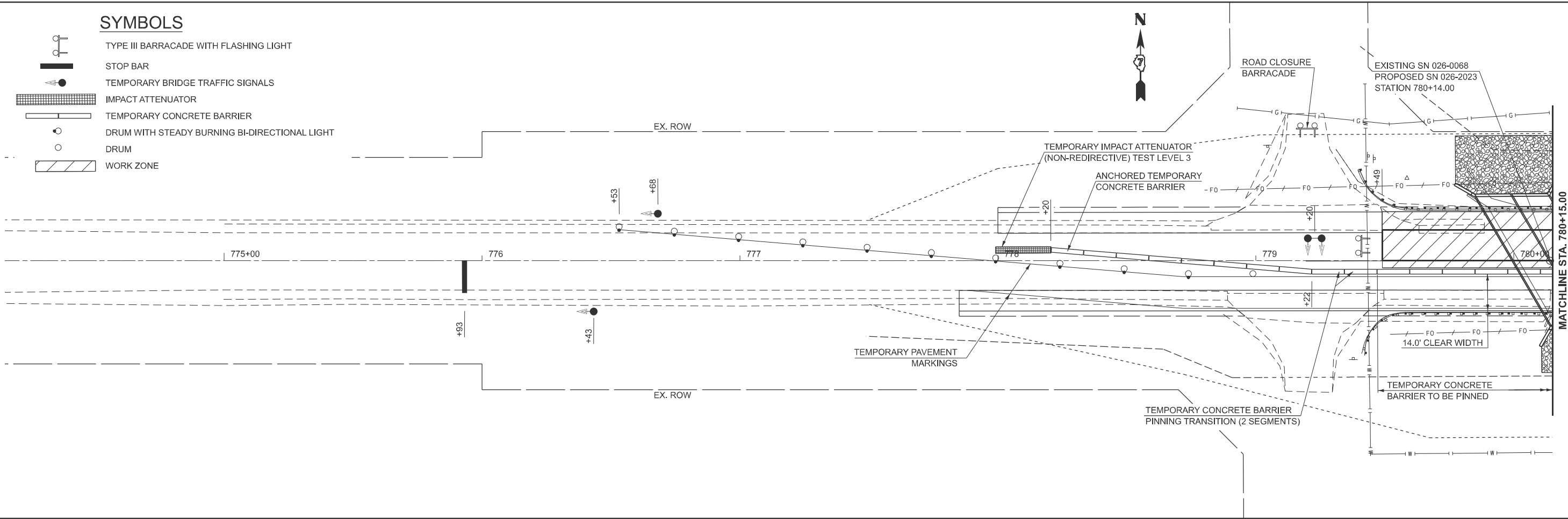
WIDENING DETAILS

SCALE: 1"=20' SHEET 1 OF 1 SHEETS STA. 777+00.00 TO STA. 783+00.00

F.A.P RTE.	SECTION	COUNTY	TOTAL SHEETS	SHEET NO.
750	(114)B-1	FAYETTE	28	9
CONTRACT NO. 74327				
ILLINOIS FED. AID PROJECT				

SYMBOLS

- 
- TYPE III BARRICADE WITH FLASHING LIGHT
- 
- STOP BAR
- 
- TEMPORARY BRIDGE TRAFFIC SIGNALS
- 
- IMPACT ATTENUATOR
- 
- TEMPORARY CONCRETE BARRIER
- 
- DRUM WITH STEADY BURNING BI-DIRECTIONAL LIGHT
- 
- DRUM
- 
- WORK ZONE



NOTES

SEE TRAFFIC CONTROL AND PROTECTION STANDARD 701321 FOR INFORMATION NOT SHOWN ON SHEET.

MODEL: Excl - Stage 1 Traffic Control [Sheet]
FILE NAME: c:\pw\work\tdot\walk\m03985650\0774327-sht-stding 1.dgn

USER NAME = Travis.Walk	DESIGNED - T. WALK	REVISED -
	DRAWN - T. WALK	REVISED -
	CHECKED -	REVISED -
	DATE -	REVISED -
PLOT DATE = 12/5/2024		

STATE OF ILLINOIS
DEPARTMENT OF TRANSPORTATION

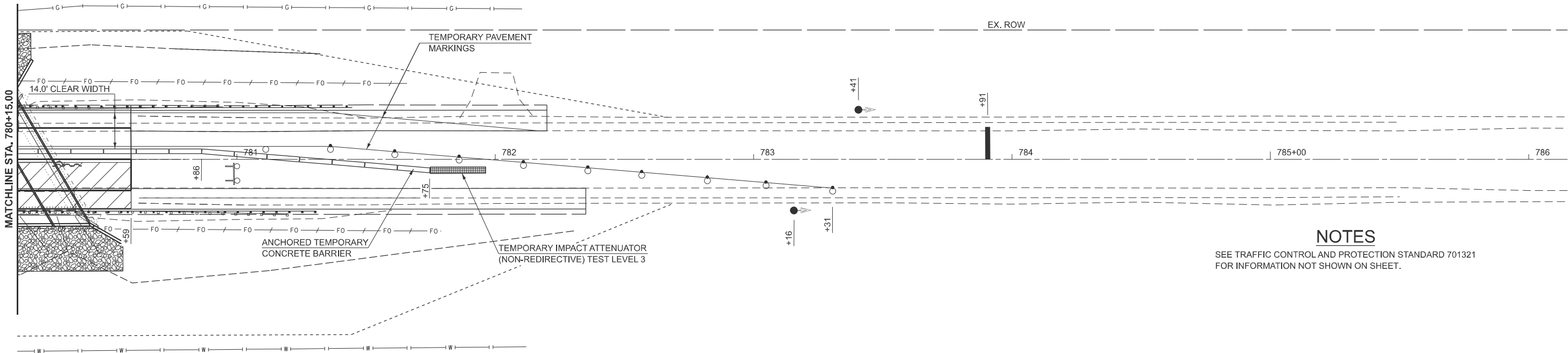
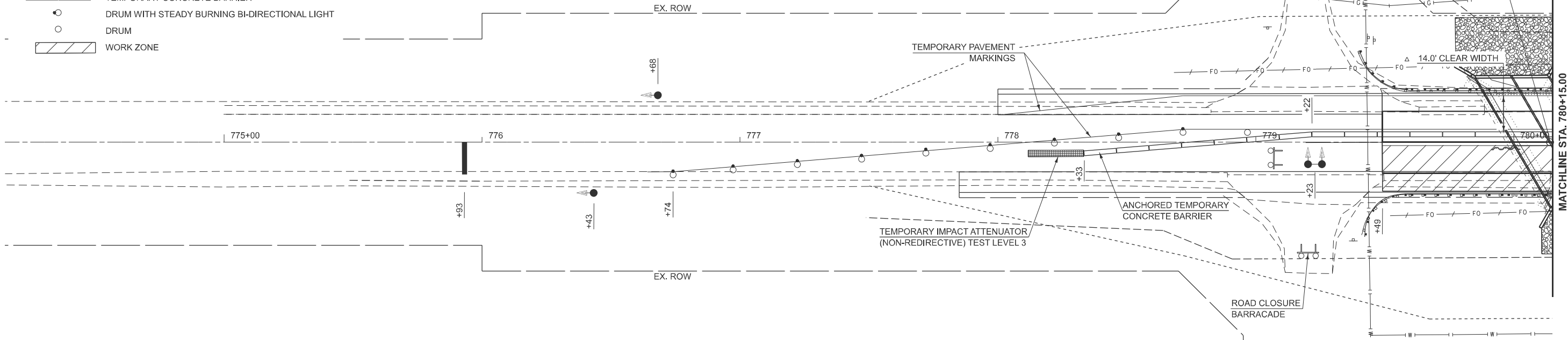
STAGE 1 TRAFFIC CONTROL

SCALE: 1"=20' SHEET 1 OF 2 SHEETS STA. 774+15.00 TO STA. 786+15.00

F.A.P RTE.	SECTION	COUNTY	TOTAL SHEETS	SHEET NO.
750	(114)B-1	FAYETTE	28	10
CONTRACT NO. 74327				
ILLINOIS FED. AID PROJECT				

SYMBOLS

- TYPE III BARRICADE WITH FLASHING LIGHT
- STOP BAR
- TEMPORARY BRIDGE TRAFFIC SIGNALS
- IMPACT ATTENUATOR
- TEMPORARY CONCRETE BARRIER
- DRUM WITH STEADY BURNING BI-DIRECTIONAL LIGHT
- DRUM
- WORK ZONE



NOTES

SEE TRAFFIC CONTROL AND PROTECTION STANDARD 701321 FOR INFORMATION NOT SHOWN ON SHEET.

MODEL: ExCL - Stage II Traffic Control [Sheet]
FILE NAME: c:\p\work\pwalk\m0098550\0714327-sht-staging 2.dgn

PLOT DATE = 12/12/2024	USER NAME = Travis.Walk	DESIGNED - T. WALK	REVISED -
		DRAWN - T. WALK	REVISED -
		CHECKED -	REVISED -
		DATE -	REVISED -

STATE OF ILLINOIS
DEPARTMENT OF TRANSPORTATION

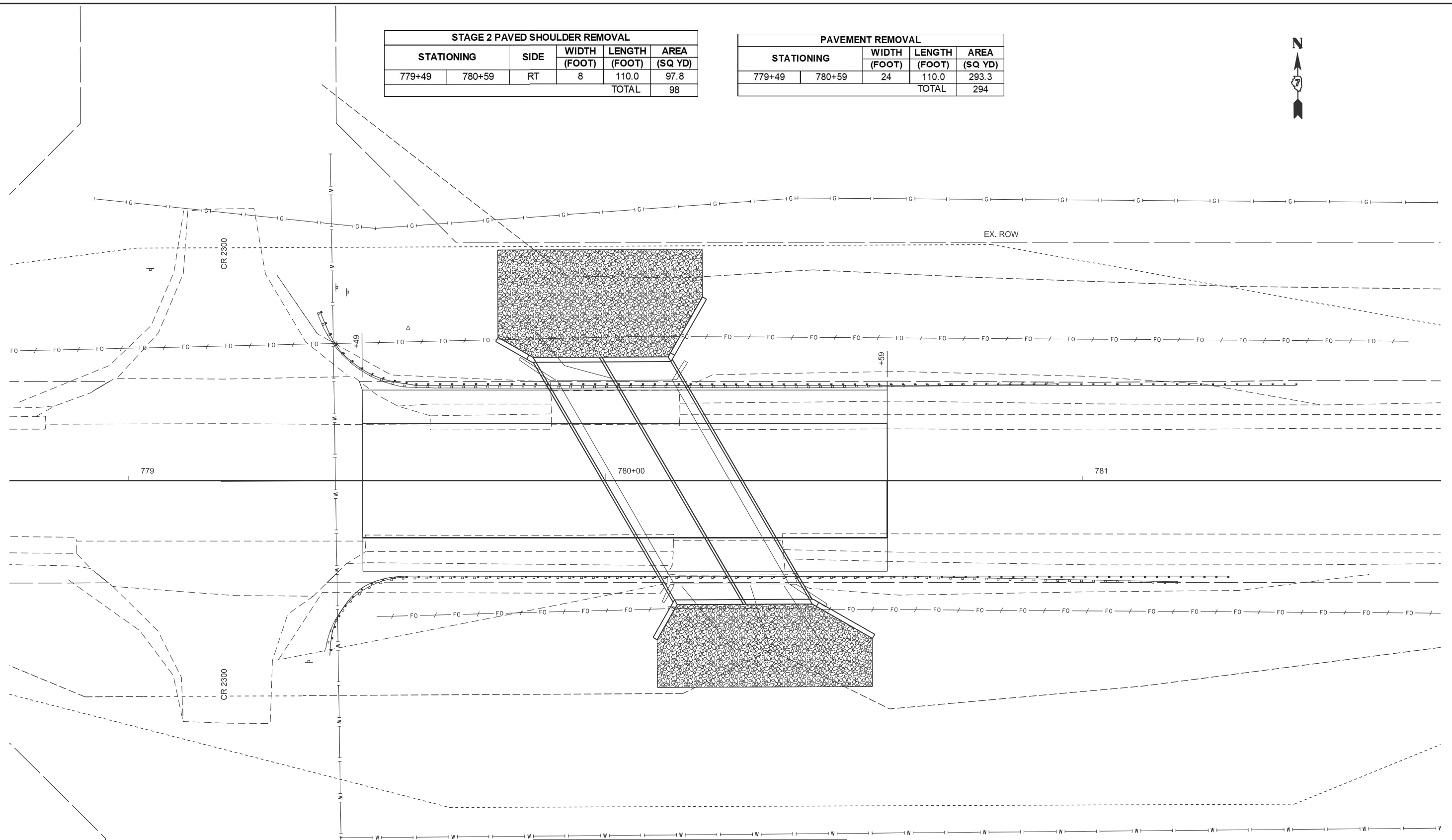
STAGE 2 TRAFFIC CONTROL

SCALE: 1"=20' SHEET 2 OF 2 SHEETS STA. 774+15.00 TO STA. 786+15.00

F.A.P RTE.	SECTION	COUNTY	TOTAL SHEETS	SHEET NO.
750	(114)B-1	FAYETTE	28	11
CONTRACT NO. 74327				
ILLINOIS FED. AID PROJECT				

STAGE 2 PAVED SHOULDER REMOVAL					
STATIONING		SIDE	WIDTH	LENGTH	AREA
			(FOOT)	(FOOT)	(SQ YD)
779+49	780+59	RT	8	110.0	97.8
				TOTAL	98

PAVEMENT REMOVAL				
STATIONING		WIDTH	LENGTH	AREA
		(FOOT)	(FOOT)	(SQ YD)
779+49	780+59	24	110.0	293.3
			TOTAL	294



PORTLAND CEMENT CONCRETE PAVEMENT 10" (JOINTED)				
STATIONING		WIDTH	LENGTH	AREA
		(FOOT)	(FOOT)	(SQ YD)
779+49	780+59	24	110.0	293.3
			TOTAL	294

PORTLAND CEMENT CONCRETE SHOULDERS 10"					
STATIONING		SIDE	WIDTH	LENGTH	AREA
			(FOOT)	(FOOT)	(SQ YD)
779+49	780+59	RT	7	110.0	85.6
779+49	780+59	LT	7	110.0	85.6
				TOTAL	172

STAGE 2 AGGREGATE WEDGE SHOULDER, TYPE B						
STATIONING		SIDE	WIDTH	LENGTH	DEPTH	WEIGHT
			(FOOT)	(FOOT)	(FOOT)	(TON)
779+49	780+59	RT	2	110.0	0.5	8.4
					TOTAL	9

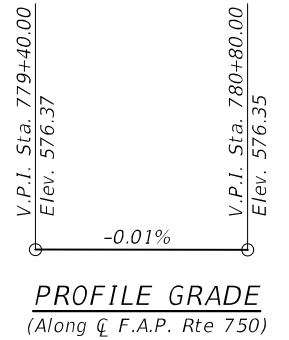
USER NAME = Travis.Walk	DESIGNED - T. WALK	REVISED -
	DRAWN - T. WALK	REVISED -
	CHECKED -	REVISED -
PL0T DATE = 11/13/2024	DATE -	REVISED -

STATE OF ILLINOIS
DEPARTMENT OF TRANSPORTATION

PROPOSED PAVEMENT AND SHOULDER				
SCALE: 1"=10'	SHEET 1	OF 1	SHEETS	STA. 778+75.00 TO STA. 781+75.00

F.A.P RTE.	SECTION	COUNTY	TOTAL SHEETS	SHEET NO.
750	(114)B-1	FAYETTE	28	12
CONTRACT NO. 74327				
ILLINOIS		FED. AID PROJECT		

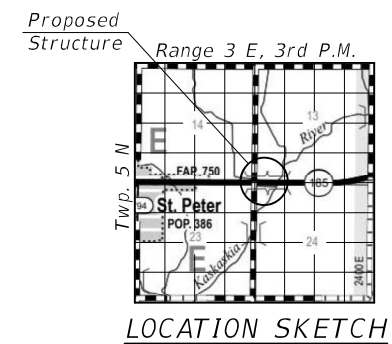
No Salvage.



2020 AASHTO LRFD Bridge Design Specifications, 9th Edition

FIELD UNITS

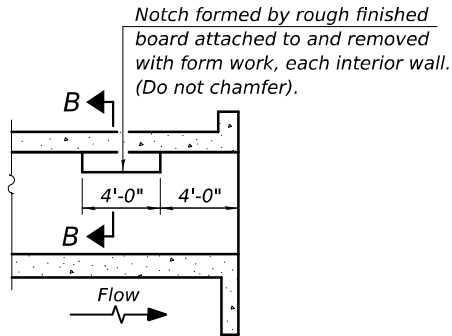
$f'_c = 3,500 \text{ psi}$
 $f_y = 60,000 \text{ psi (Reinforcement)}$



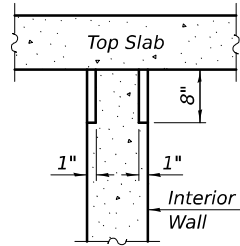
GENERAL PLAN & ELEVATION
IL. RTE. 185 OVER
LONE GROVE BRANCH TRIBUTARY
F.A.P. RTE. 750 - SECTION (114)B-1
FAYETTE COUNTY
STATION 780+14.00
STRUCTURE NO. 026-2023

DESIGNED - RYAN P. NEGANGARD	EXAMINED		DATE - 2/3/2025	<div style="text-align: center;"> STATE OF ILLINOIS DEPARTMENT OF TRANSPORTATION </div>	<div style="text-align: center;"> SHEET 1 OF 12 SHEETS </div>	F.A.P. RTE.	SECTION	COUNTY	TOTAL SHEETS	SHEET NO.
CHECKED - DAVID H. RICHTER		ENGINEER OF BRIDGE DESIGN	REVISED -			750	(114)B-1	FAYETTE	28	13
DRAWN - ANDRO R. SAMANIERO / D.A.P.	PASSED		REVISED -			<div style="text-align: right;"> CONTRACT NO. 74327 </div>				
CHECKED - R.P.N. / D.H.R.		ENGINEER OF BRIDGES AND STRUCTURES	REVISED -							

MODEL: 0262023-74327-002.dgn
FILE NAME: pw://ldo-pw.bentley.com/PWDOT/Drawings/IDOT Offices/Bureau of Bridges and Structures/OBM Projects/0262023/CADDData/Bridge/0262023-74327-Design.dgn



LONGITUDINAL
SECTION

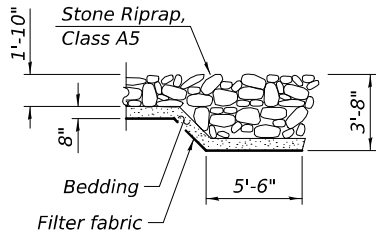


SECTION B-B

PHOEBE NESTING

SITE DETAILS

(Downstream End Only)



SECTION A-A

GENERAL NOTES

Excavation behind existing abutment walls shall be performed to balance front and back soil pressure before removing the existing superstructure. The Contractor shall sawcut the upper portion of the existing abutment at the stage removal line before Stage I removal to ensure the remaining portion will not be prematurely damaged.

Layout of the slope protection system may be varied to suit ground conditions in the field as directed by the Engineer.

Precast alternate is not allowed.

STA. 780+14.00
BUILT BY
STATE OF ILLINOIS
F.A.P. RTE. 750 SEC. (114)B-1
LOADING HL-93
STR. NO. 026-2023

NAME PLATE

See Std. 515001

TOTAL BILL OF MATERIAL

ITEM	UNIT	TOTAL
Stone Riprap, Class A5	Sq. Yd.	160
Filter Fabric	Sq. Yd.	160
Removal of Existing Structures	Each	1
Removal and Disposal of Unsuitable Material for Structures	Cu. Yd.	149
Reinforcement Bars	Pound	43,250
Bar Splicers	Each	145
Name Plates	Each	1
Temporary Soil Retention System	Sq. Ft.	274
Concrete Box Culverts	Cu. Yd.	178.9
Geocomposite Wall Drain	Sq. Yd.	192
Strong Post Guardrail Attached to Culvert	Foot	69
Membrane Waterproofing System for Buried Structures	Sq. Yd.	192
Rock Fill - Foundation	Ton	268
Temporary Slab Support System	L. Sum	1

INDEX OF SHEETS

- General Plan & Elevation
- General Data
- Stage Construction Details
- Temporary Soil Retention System
- Temporary Concrete Barrier
- Culvert Details - Top & Bottom Slab
- 7-10. Culvert Details
11. Bar Splicer Details
12. Soil Boring Logs

WATERWAY INFORMATION

Drainage Area = 1.2 mi. ²		Existing Overtopping Elev. 576.3 @ Sta. 781+00.00							
		Proposed Overtopping Elev. 576.3 @ Sta. 781+00.00							
Flood	Freq. Yr.	Q C.F.S.	Opening Ft ²		Nat. H.W.E.	Head - Ft.		Headwater El.	
			Exist.	Prop.		Exist.	Prop.	Exist.	Prop.
Ten-Year	10	438	89	104	573.1	0.1	0.0	573.2	573.1
Design	50	710	106	124	573.9	0.5	0.3	574.4	574.2
Base	100	832	112	124	574.2	1.1	0.5	575.3	574.7
Max. Calc.	500	1,130	120	124	574.6	1.5	1.5	576.1	576.1

10 Year velocity through existing bridge = 4.9 ft/s

10 Year velocity through proposed bridge = 4.6 ft/s

DESIGNED - RYAN P. NEGANGARD	EXAMINED
CHECKED - DAVID H. RICHTER	PASSED
DRAWN - DENNIS A. POP	
CHECKED - R.P.N. / D.H.R.	

ENGINEER OF BRIDGE DESIGN
ENGINEER OF BRIDGES AND STRUCTURES

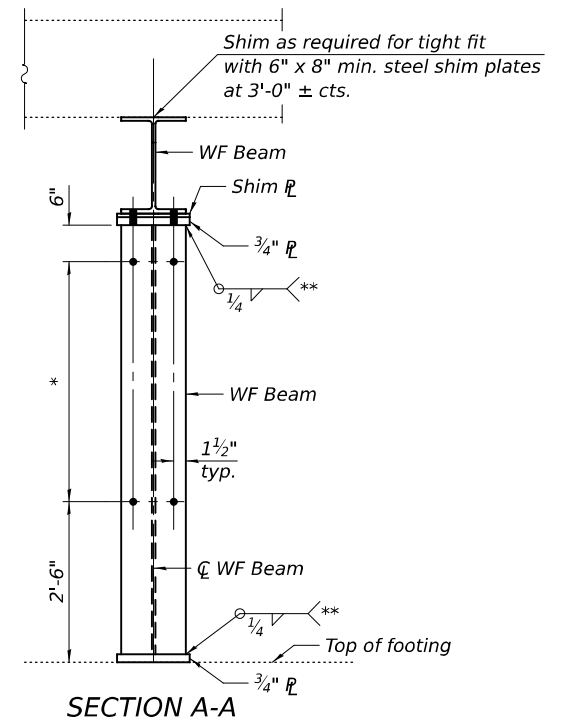
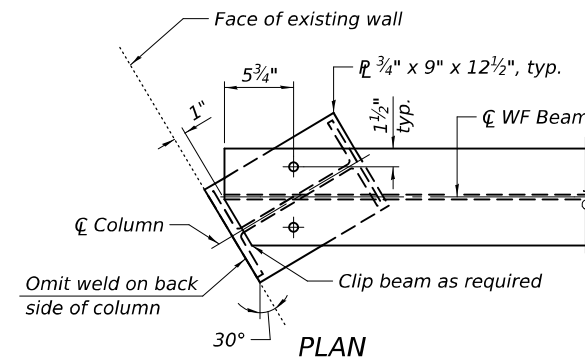
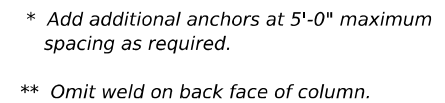
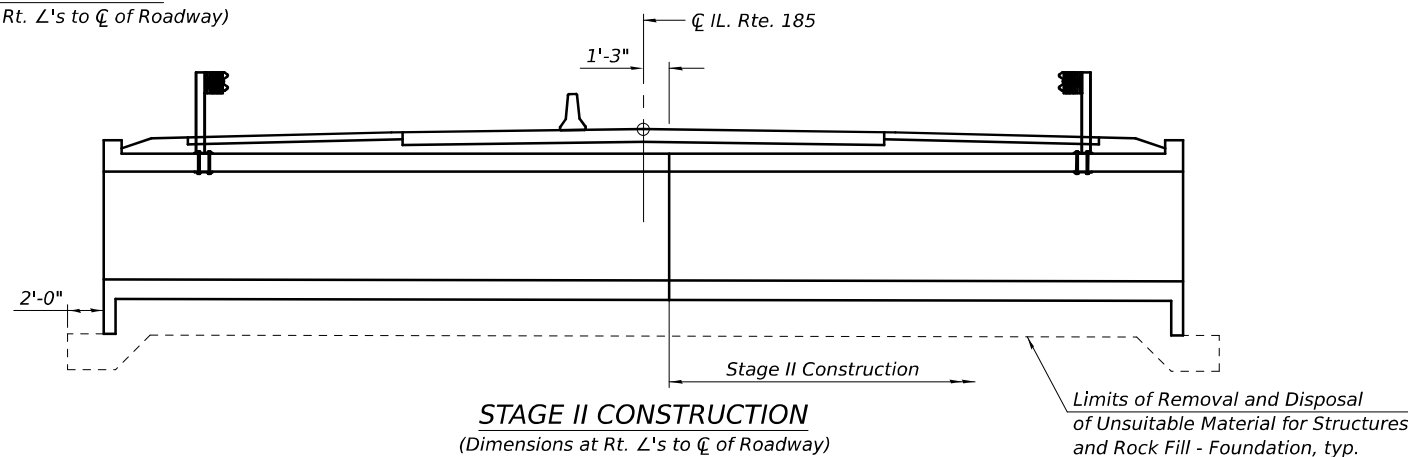
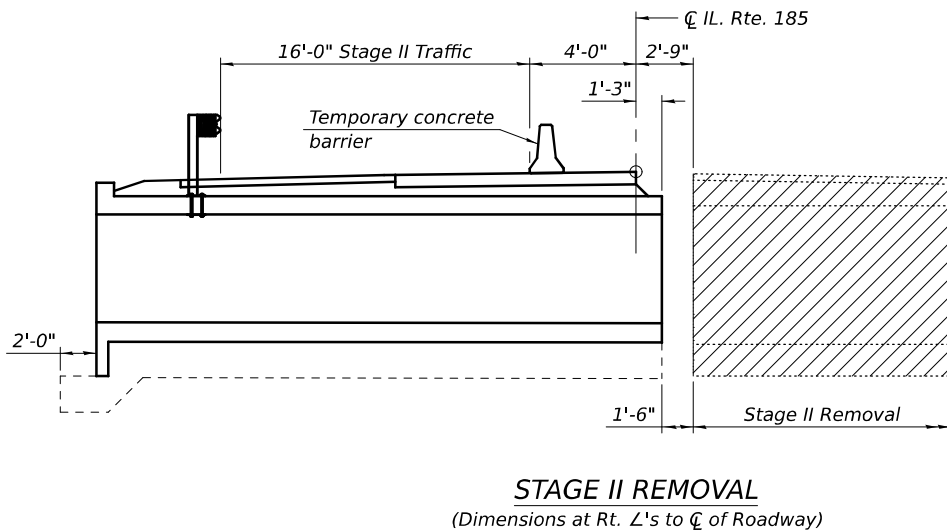
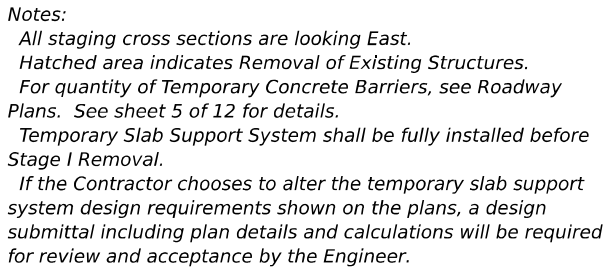
DATE - FEBRUARY 3, 2025	REVISED -
	REVISED -

STATE OF ILLINOIS
DEPARTMENT OF TRANSPORTATION



GENERAL DATA
STRUCTURE NO. 026-2023

SHEET 2 OF 12 SHEETS

F.A.P. RTE.	SECTION	COUNTY	TOTAL SHEETS	SHEET NO.
750	(114)B-1	FAYETTE	28	14
CONTRACT NO. 74327				
ILLINOIS FED. AID PROJECT				



DESIGNED	-	RYAN P. NEGANGARD
CHECKED	-	DAVID H. RICHTER
DRAWN	-	DENNIS A. POP
CHECKED	-	R.P.N. / D.H.R.

EXAMINED	
PASSED	
	ENGINEER OF BRIDGES AND STRUCTURES

DATE - FEBRUARY 3, 2025

REVISED -
REVISED -

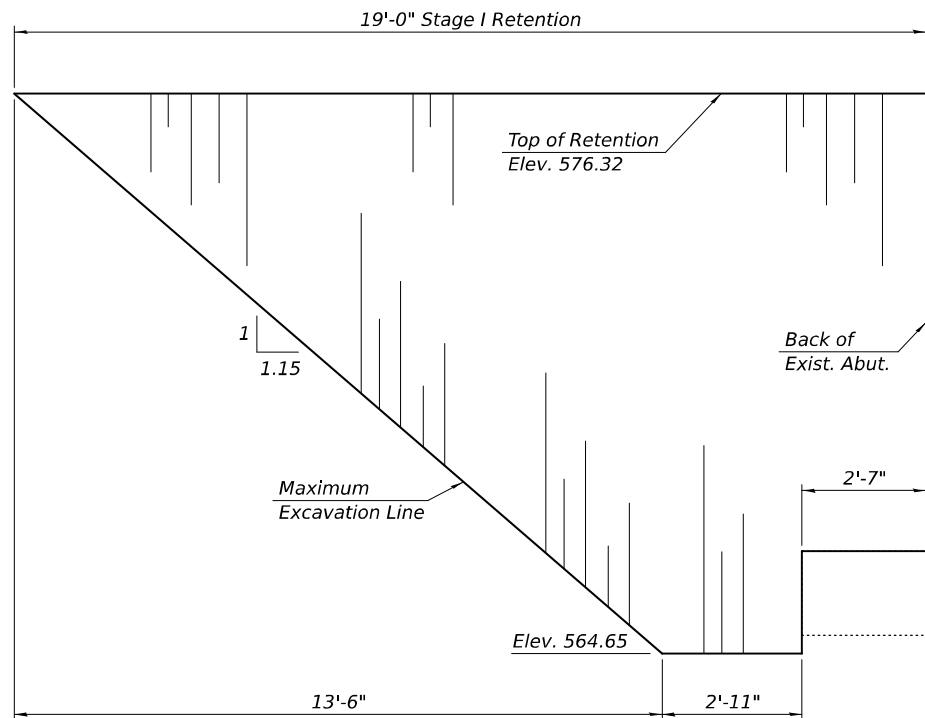
STATE OF ILLINOIS
DEPARTMENT OF TRANSPORTATION

STAGE CONSTRUCTION DETAILS
STRUCTURE NO. 026-2023

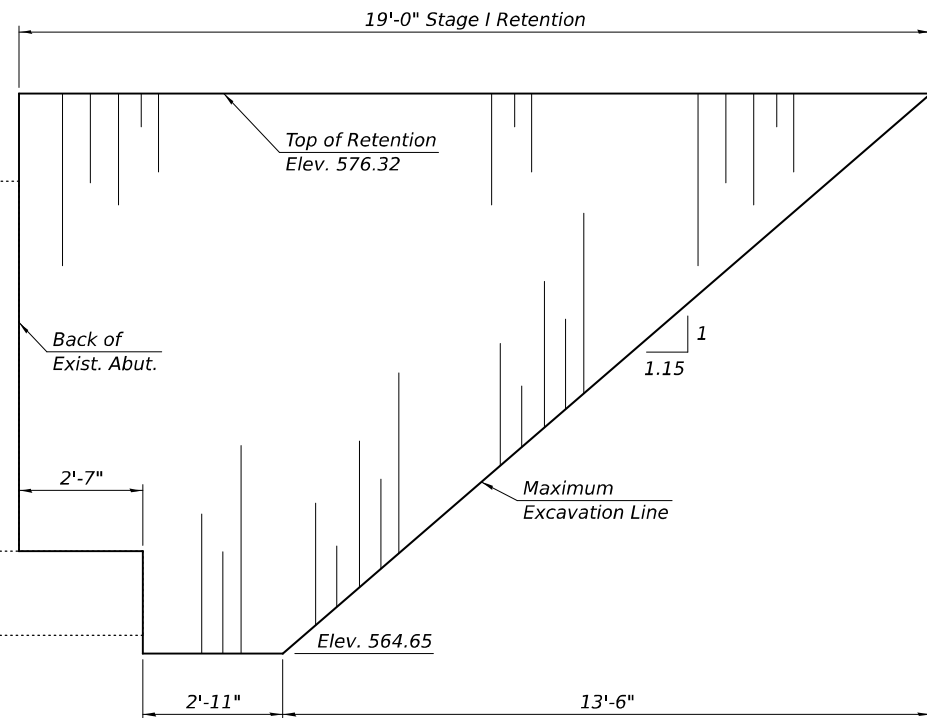
SHEET 3 OF 12 SHEETS

F.A.P. RTE.	SECTION	COUNTY	TOTAL SHEETS	SHEET NO.
750	(114)B-1	FAYETTE	28	15
		CONTRACT NO. 74327		
ILLINOIS		FED. AID PROJECT		

ILLINOIS	FED. AID PROJECT
----------	------------------



WEST - LOOKING NORTH



EAST - LOOKING NORTH

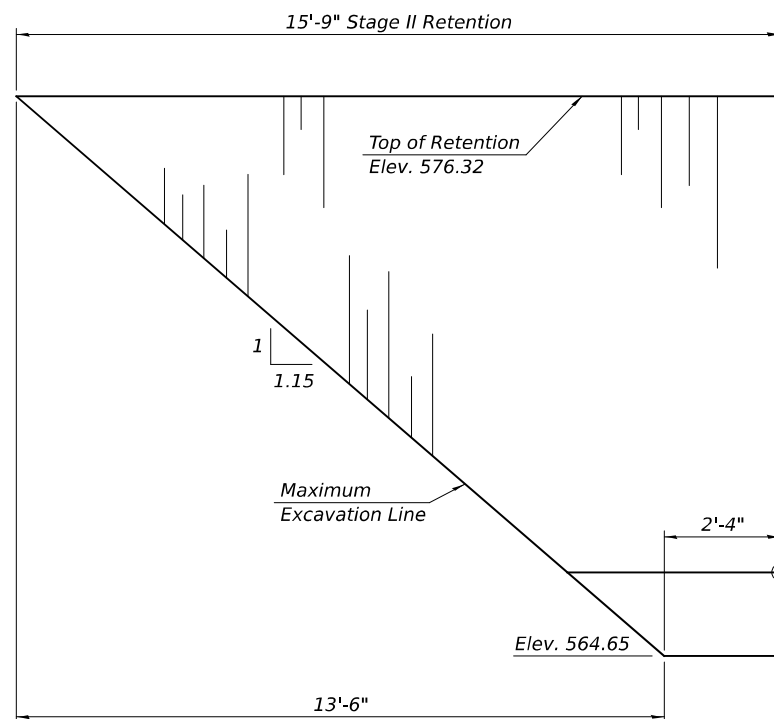
STAGE I TEMPORARY SOIL RETENTION SYSTEM

Notes:

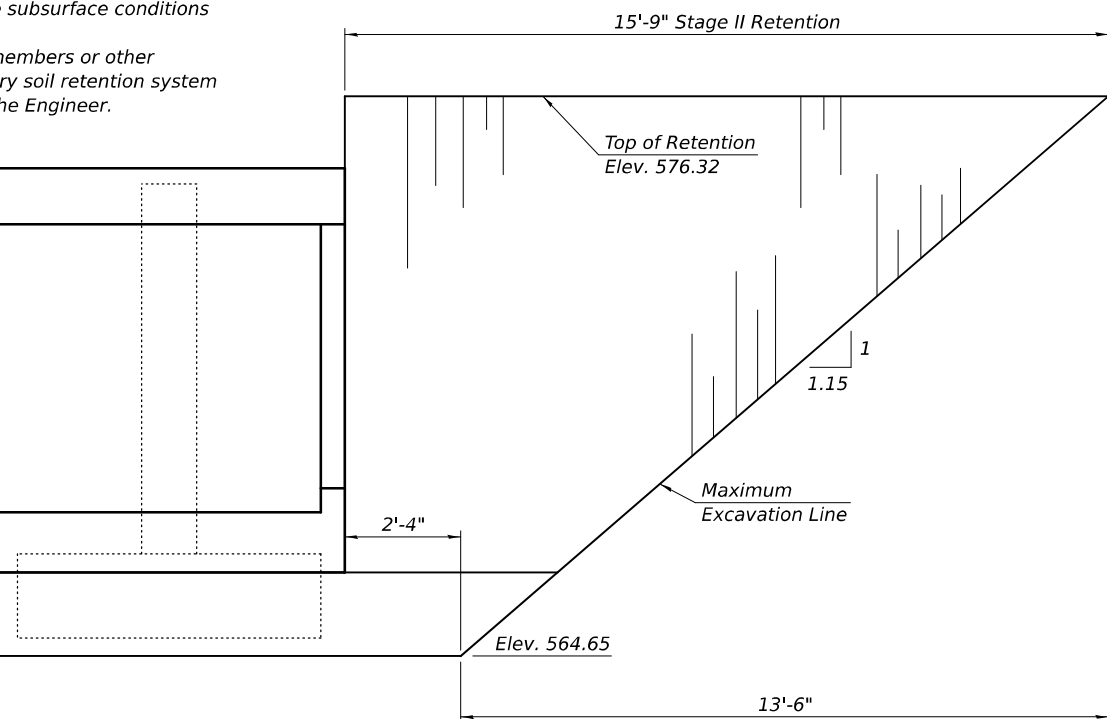
The existing abutment and wingwalls shall be completely removed. Piles shall be removed to two feet below the bottom of the culvert. Cost included in the Removal of Existing Structures.

The limits and quantities of removal and rock fill shown are based on the boring data and may be modified by the District Geotechnical and Field Engineers for variable subsurface conditions encountered in the field.

A cantilevered sheet piling design does not appear feasible and additional members or other retention systems may be necessary. The Contractor shall submit a temporary soil retention system design including plan details and calculations for review and acceptance by the Engineer.



WEST - LOOKING NORTH



EAST - LOOKING NORTH

STAGE II TEMPORARY SOIL RETENTION SYSTEM

**STATE OF ILLINOIS
DEPARTMENT OF TRANSPORTATION**

**TEMPORARY SOIL RETENTION SYSTEM
STRUCTURE NO. 026-2023**

SHEET 4 OF 12 SHEETS

F.A.P. RTE.	SECTION	COUNTY	TOTAL SHEETS	SHEET NO.
750	(114)B-1	FAYETTE	28	16
CONTRACT NO. 74327				
ILLINOIS FED. AID PROJECT				

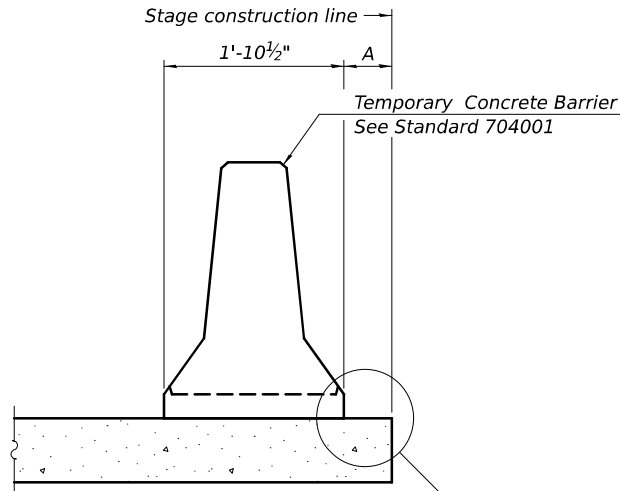
MODEL: 0262023-74327-004.dgn
FILE NAME: pw://ddp-pw/bentley.com/PWIDOT/Drawings/IDOT Offices/Bureau of Bridges and Structures/OBM Projects/0262023/CADDData/6Rdgs/0262023-74327-Design.dgn
2/3/2025 9:12:32 AM

DESIGNED -	RYAN P. NEGANGARD
CHECKED -	DAVID H. RICHTER
DRAWN -	DENNIS A. POP
CHECKED -	R.P.N. / D.H.R.

EXAMINED	<i>Mark Shuffler</i> ENGINEER OF BRIDGE DESIGN
PASSED	<i>Jayne T. Haff</i> ENGINEER OF BRIDGES AND STRUCTURES

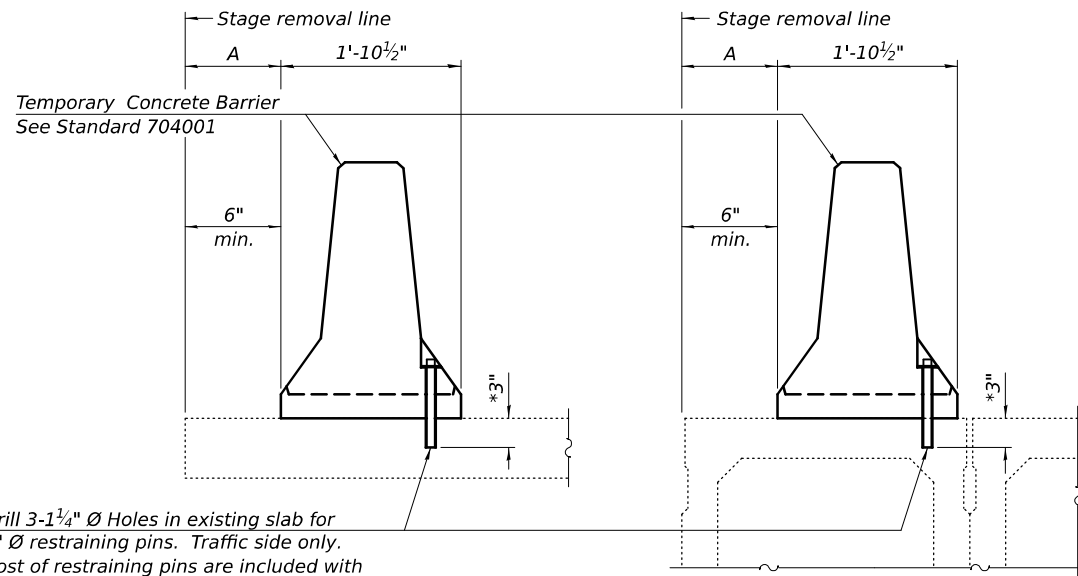
DATE -	FEBRUARY 3, 2025
REVISED -	
REVISED -	

MODEL: 0262023-74327-005.dgn
FILE NAME: p:\w\lido-pw\benley.com\PMIDOT\Documents\IDOT Offices\Bureau of Bridges and Structures\OBM Projects\0262023\CADData\Bldge\0262023-74327-Design.dgn



When "A" is 3'-1" or less, the temporary concrete barrier shall be restrained to the new slab according to Detail I, II or III. No restraint is required when "A" is greater than 3'-1".

NEW SLAB OR NEW DECK BEAM

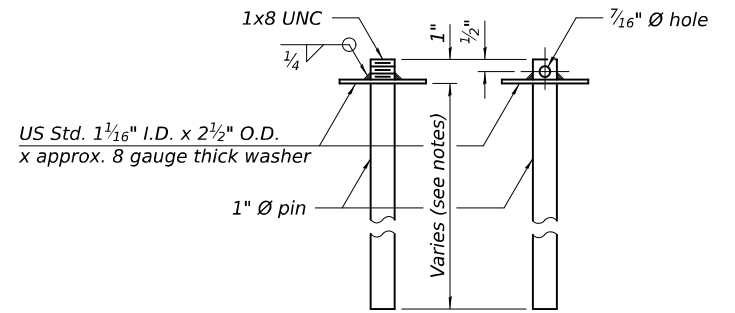


Drill 3-1/4" Ø Holes in existing slab for 1" Ø restraining pins. Traffic side only. Cost of restraining pins is included with Temporary Concrete Barrier. No restraint is required when "A" is greater than 3'-1".

EXISTING SLAB

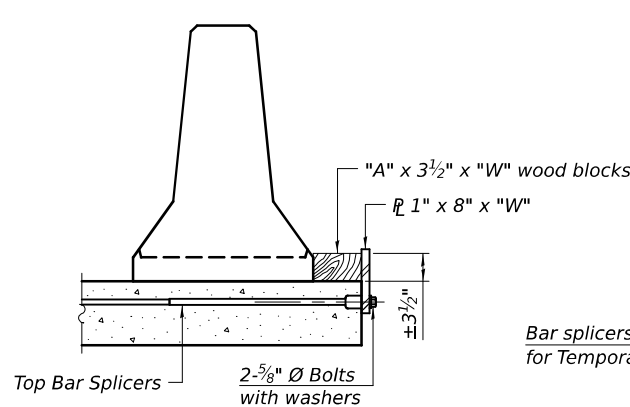
* When hot-mix asphalt wearing surface is present, embedment shall be 3" plus the wearing surface depth.

EXISTING DECK BEAM

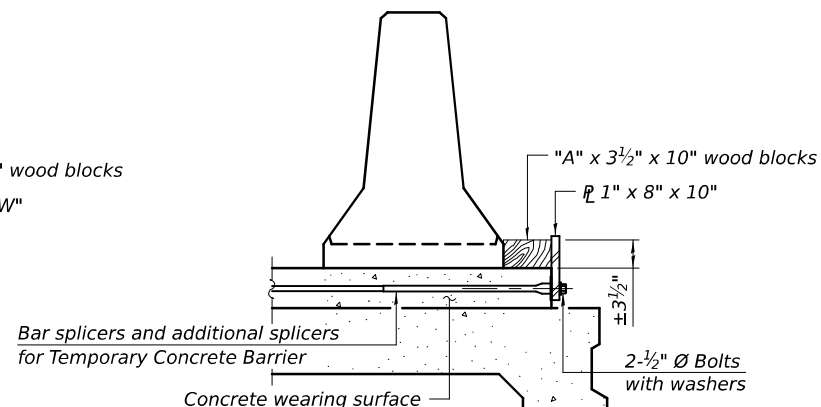


RESTRAINING PIN

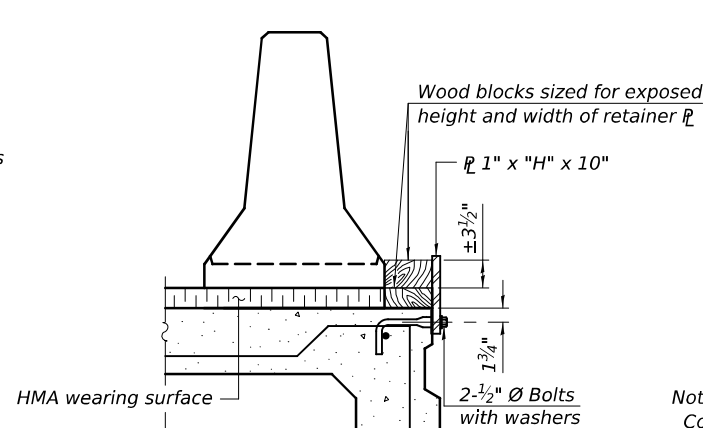
SECTIONS THRU SLAB OR DECK BEAM



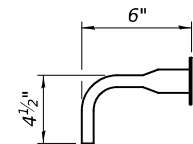
DETAIL I



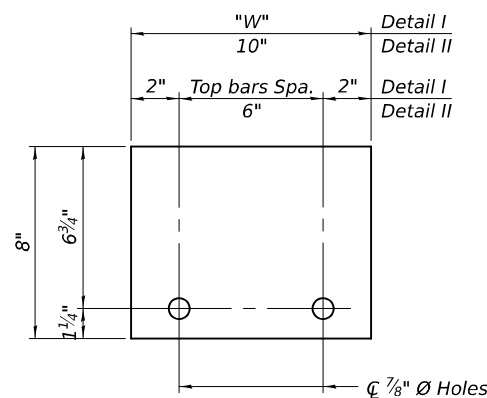
DETAIL II



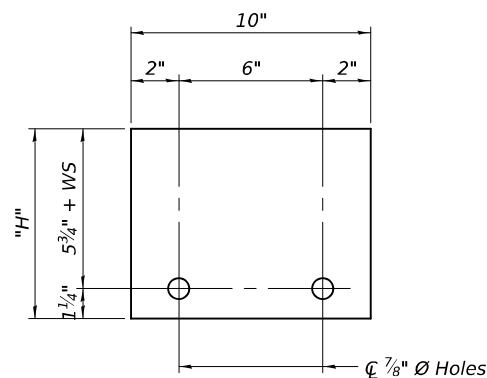
DETAIL III



BAR SPLICER FOR #4 BAR - DETAIL III



STEEL RETAINER 1" x 8" x "W"
(Detail I and II)



STEEL RETAINER 1" x "H" x 10"
(Detail III)

RAILING CRITERIA

NCHRP 350 Test Level	3
Railing Weight (plf)	440

R-27

5-15-2023

DESIGNED	-	RYAN P. NEGANGARD
CHECKED	-	DAVID H. RICHTER
DRAWN	-	DENNIS A. POP
CHECKED	-	R.P.N. / D.H.R.

EXAMINED	-	Mark Shuffler ENGINEER OF BRIDGE DESIGN
PASSED	-	Jayne F. Shuffler ENGINEER OF BRIDGES AND STRUCTURES

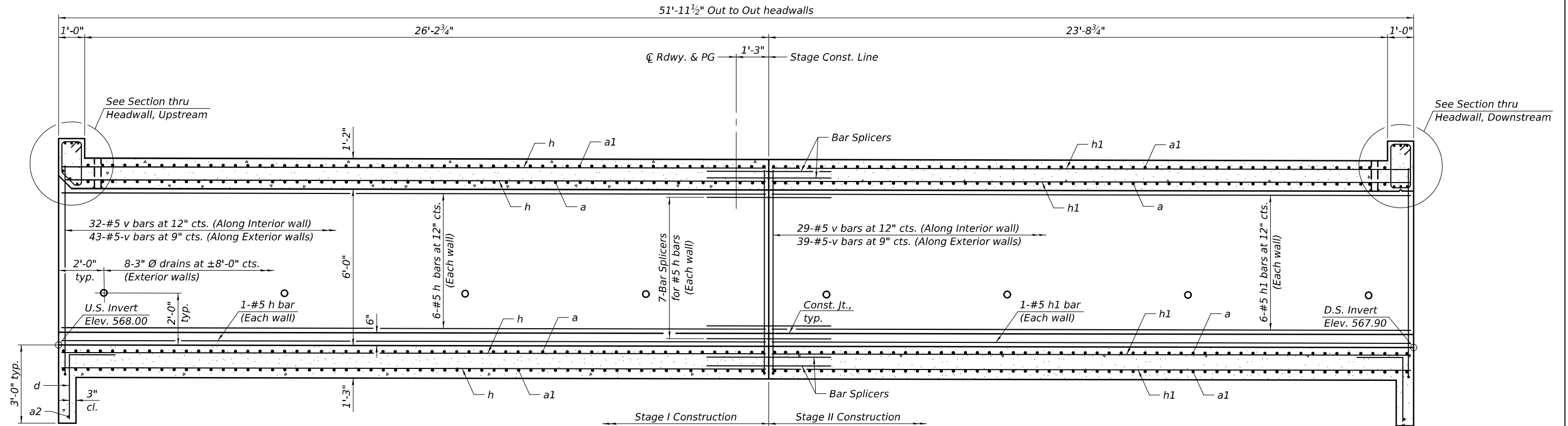
DATE	-	FEBRUARY 3, 2025
REVISED	-	
REVISED	-	

STATE OF ILLINOIS
DEPARTMENT OF TRANSPORTATION

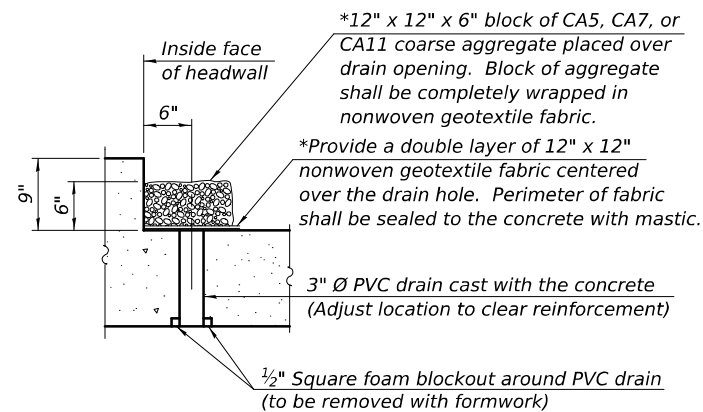
TEMPORARY CONCRETE BARRIER
STRUCTURE NO. 026-2023

SHEET 5 OF 12 SHEETS

F.A.P. RTE.	SECTION	COUNTY	TOTAL SHEETS	SHEET NO.
750	(114)B-1	FAYETTE	28	17
CONTRACT NO. 74327				
ILLINOIS FED. AID PROJECT				



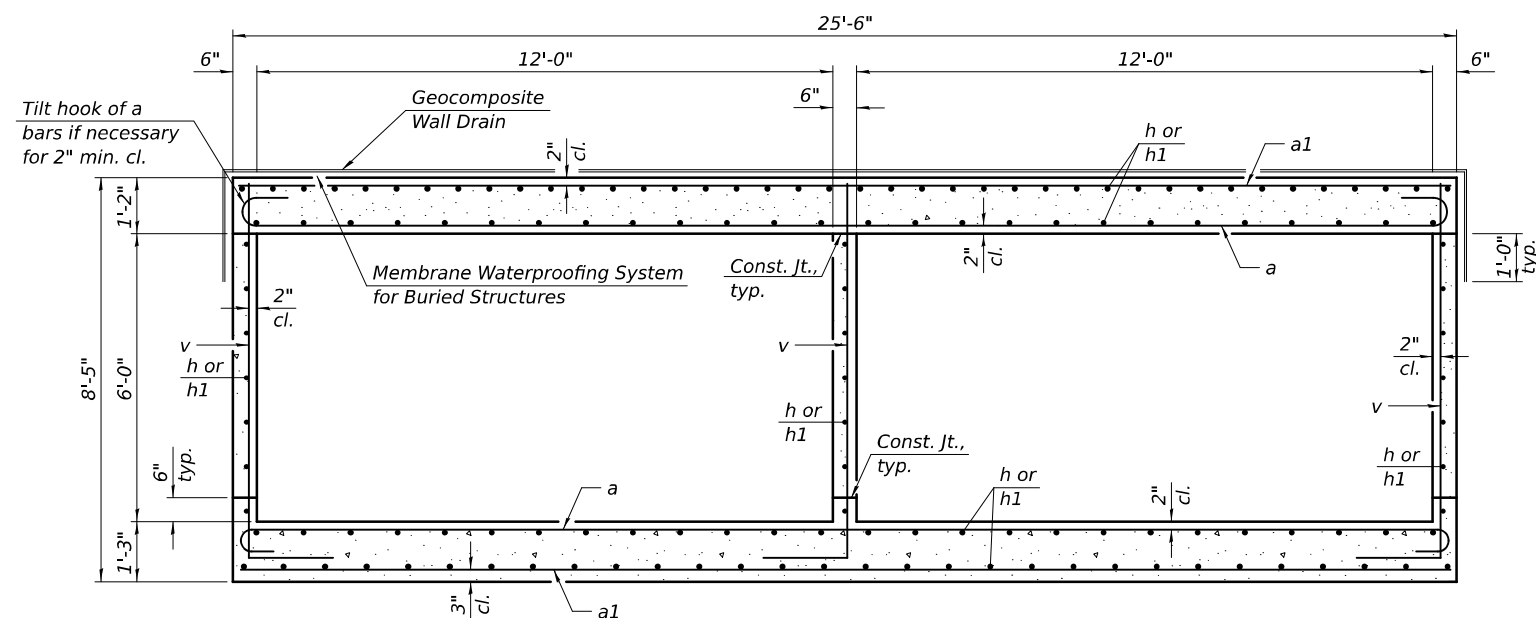
LONGITUDINAL SECTION
(Looking East - Dimensions at Rt. L's to C of Roadway)



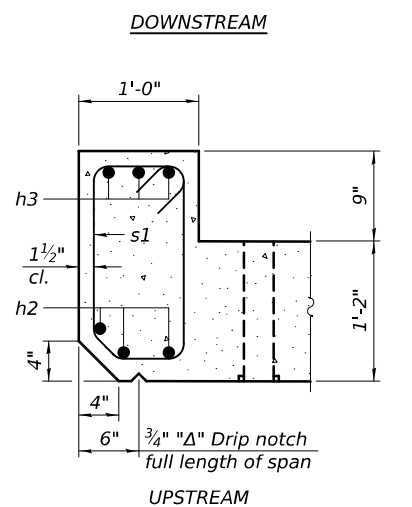
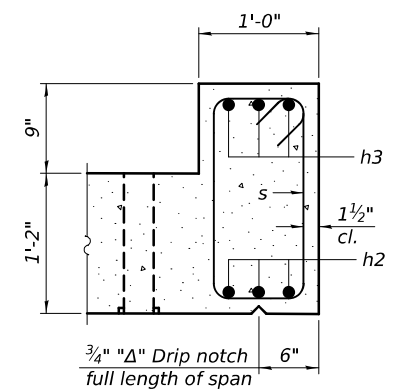
DRAIN DETAIL

(All costs associated with furnishing and constructing the above drain detail will not be measured for payment but shall be included in the contract unit price for the associated work.)

* Nonwoven geotextile fabric shall conform to the requirements of Article 1080.01 of the Standard Specifications. The minimum weight of the fabric shall be 6 ounces per square yard.



SECTION THRU BARREL



SECTION THRU BARREL

MODEL: 0262023-74327-007.dgn
FILE NAME: pw:\fdopw\benley.com\PWIDOT\Documents\IDOT Offices\Bureau of Bridges and Structures\OBM Projects\0262023\CADData\Bldge\0262023-74327-Design.dgn

DESIGNED -	RYAN P. NEGANGARD
CHECKED -	DAVID H. RICHTER
DRAWN -	DENNIS A. POP
CHECKED -	R.P.N. / D.H.R.

EXAMINED	<i>Mark Shuff</i> ENGINEER OF BRIDGE DESIGN
PASSED	<i>Jayne T. Hoff</i> ENGINEER OF BRIDGES AND STRUCTURES

DATE -	FEBRUARY 3, 2025
REVISED -	
REVISED -	

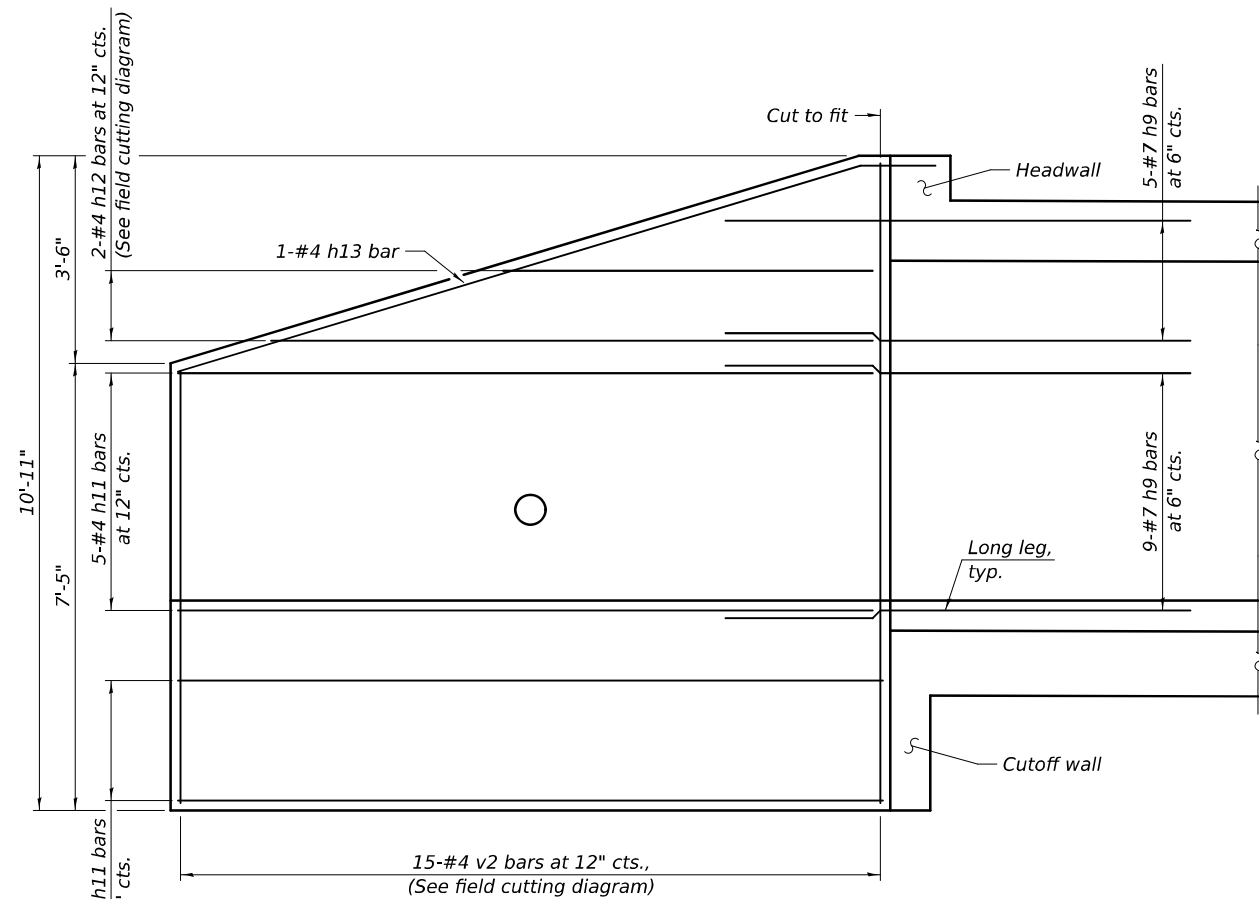
STATE OF ILLINOIS
DEPARTMENT OF TRANSPORTATION

CULVERT DETAILS
STRUCTURE NO. 026-2023

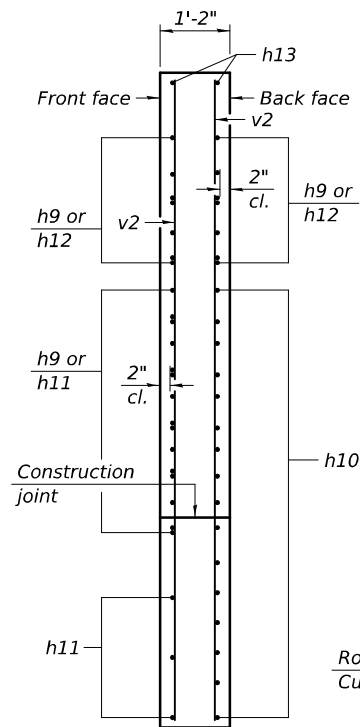
SHEET 7 OF 12 SHEETS

F.A.P. RTE.	SECTION	COUNTY	TOTAL SHEETS	SHEET NO.
750	(114)B-1	FAYETTE	28	19
CONTRACT NO. 74327				
ILLINOIS FED. AID PROJECT				

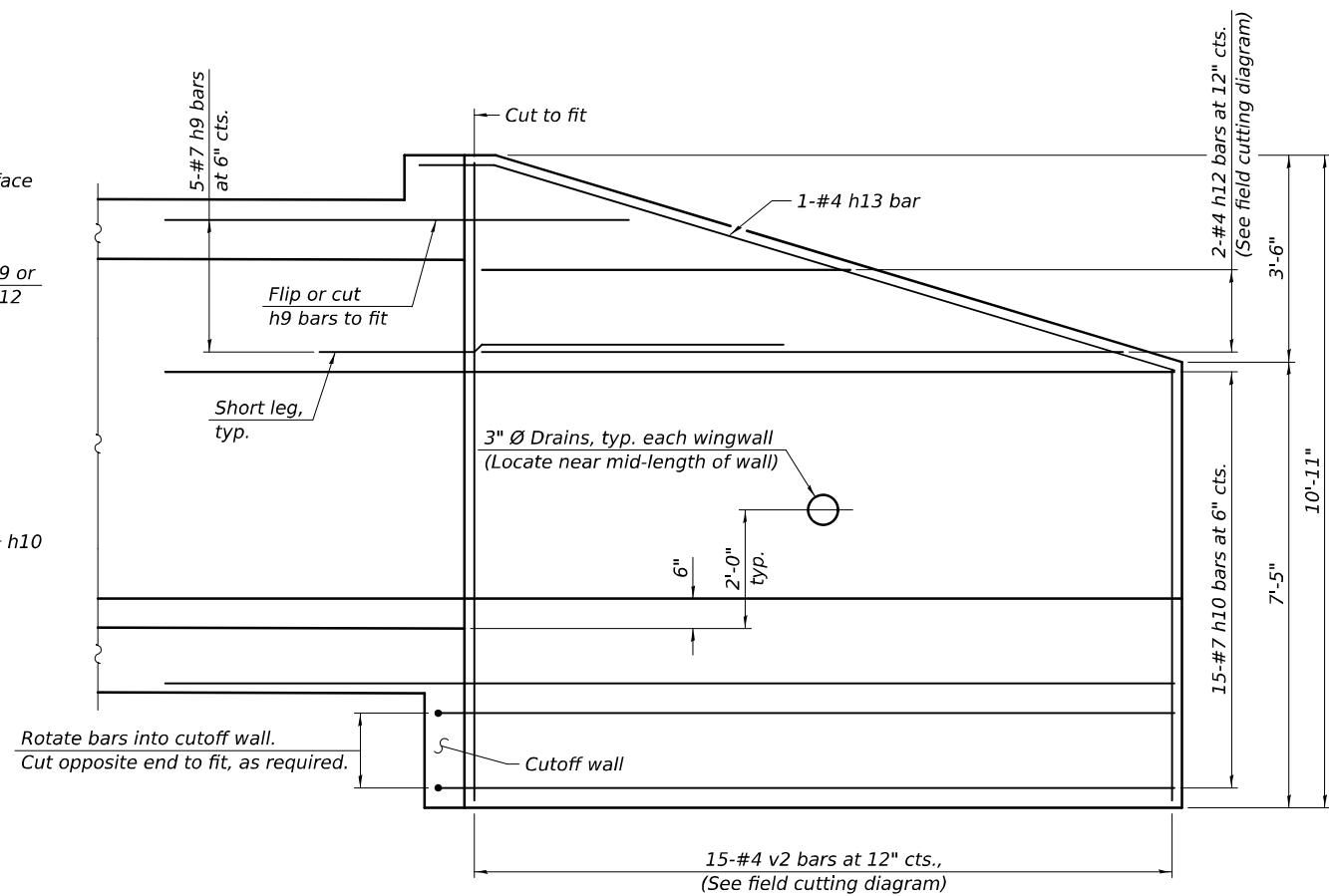
MODEL: 0262023-74327-009.dgn
FILE NAME: p:\p\ldo-pw\benley.com\PWIDOT\Documents\IDOT Offices\Bureau of Bridges and Structures\OBM Projects\0262023\CADData\Bldg\0262023-74327-Design.dgn
2/3/2025 9:19:15 AM



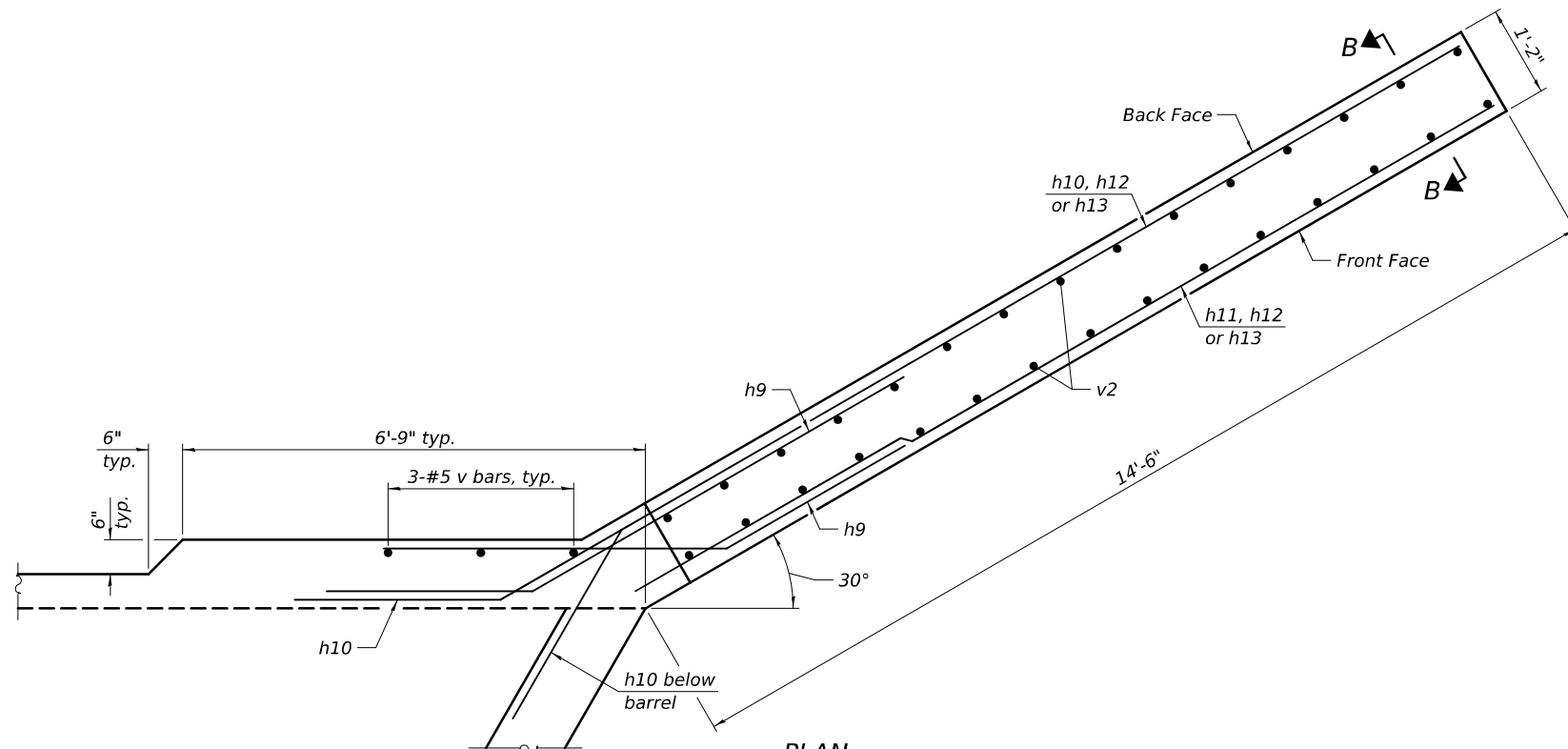
ELEVATION
(Showing reinforcement in the front face)



SECTION B-B





ELEVATION
(Showing reinforcement in the back face)



PLAN
(Southeast wingwall shown, Northwest wingwall similar by 180° rotation)

DESIGNED	-	RYAN P. NEGANGARD
CHECKED	-	DAVID H. RICHTER
DRAWN	-	DENNIS A. POP
CHECKED	-	R.P.N. / D.H.R.

EXAMINED	
PASSED	

DATE	-	FEBRUARY 3, 2025
REVISED	-	
REVISED	-	

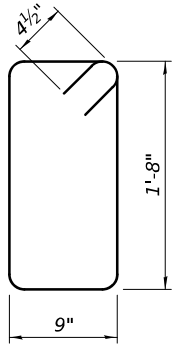
STATE OF ILLINOIS
DEPARTMENT OF TRANSPORTATION

CULVERT DETAILS
STRUCTURE NO. 026-2023

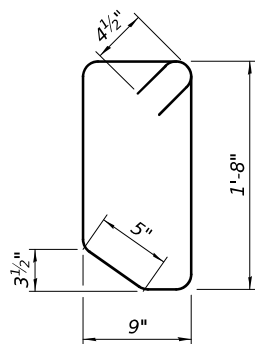
SHEET 9 OF 12 SHEETS

F.A.P. RTE.	SECTION	COUNTY	TOTAL SHEETS	SHEET NO.
750	(114)B-1	FAYETTE	28	21
CONTRACT NO. 74327				
ILLINOIS FED. AID PROJECT				

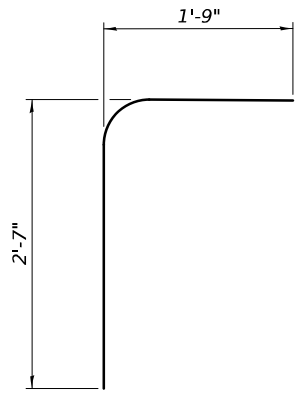
MODEL: 0262023-74327-010.dgn
FILE NAME: pw://ldo-pw/bentley.com/PWIDOT/Drawings/IDOT Offices/Bridges and Structures/OBM Projects/0262023/CADData/Bridge/0262023-74327-Design.dgn



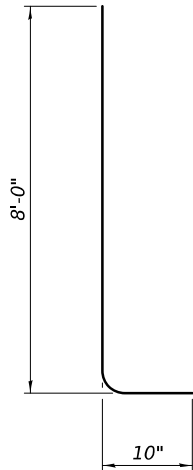
BAR s



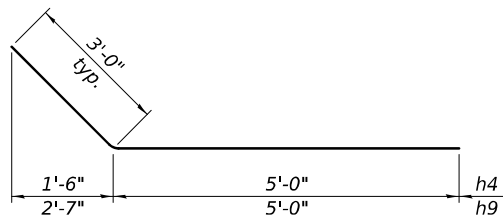
BAR s1



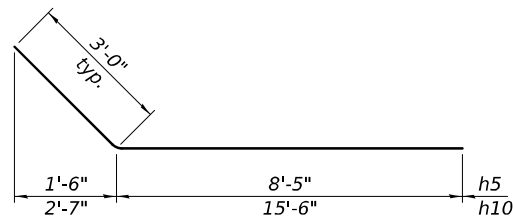
BAR d



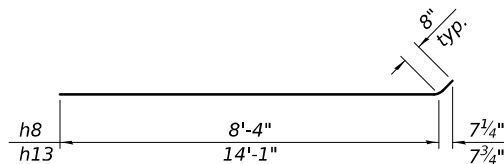
BAR v



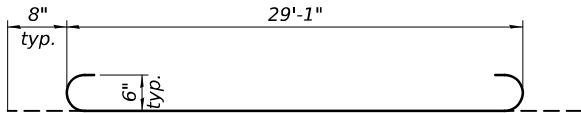
BARS h4 & h9



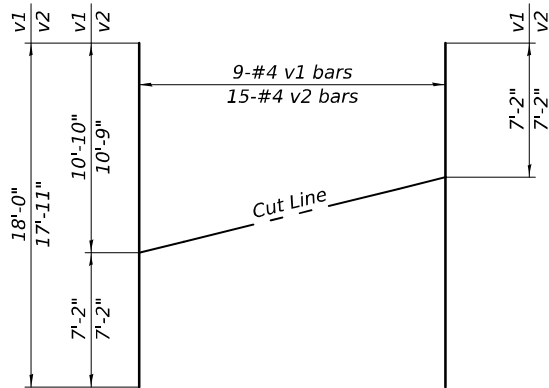
BARS h5 & h10



BARS h8 & h13

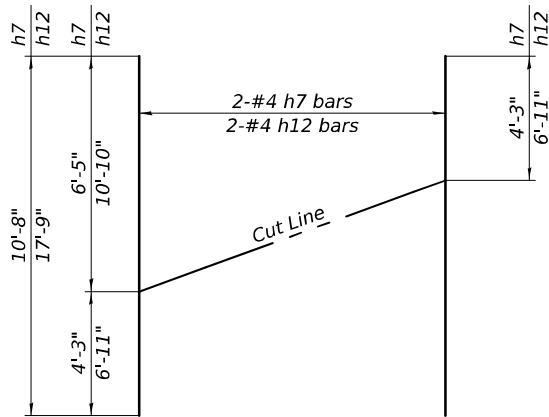


BAR a



FIELD CUTTING DIAGRAM

Order v1 and v2 bars full length. Cut as shown and use remainder of bars in opposite wingwall.



FIELD CUTTING DIAGRAM

Order h7 and h12 bars full length. Cut as shown and use remainder of bars in opposite wingwall.

BILL OF MATERIAL

Bar	No.	Size	Length	Shape
a	224	#6	30'-5"	
a1	224	#8	29'-1"	
a2	2	#4	29'-1"	
d	50	#4	4'-4"	
h	145	#5	31'-1"	
h1	145	#5	28'-3"	
h2	6	#6	29'-1"	
h3	6	#7	29'-1"	
h4	44	#5	8'-0"	
h5	36	#5	11'-5"	
h6	16	#4	8'-4"	
h7	4	#4	10'-8"	
h8	4	#4	9'-0"	
h9	38	#7	8'-0"	
h10	30	#7	18'-6"	
h11	16	#4	14'-4"	
h12	4	#4	17'-9"	
h13	4	#4	14'-9"	
s	29	#4	5'-7"	
s1	29	#4	5'-5"	
v	231	#5	8'-10"	
v1	18	#4	18'-0"	
v2	30	#4	17'-11"	
Concrete Box Culverts				Cu. Yd. 178.9
Reinforcement Bars				Pound 43,250

DESIGNED	-	RYAN P. NEGANGARD
CHECKED	-	DAVID H. RICHTER
DRAWN	-	DENNIS A. POP
CHECKED	-	R.P.N. / D.H.R.

EXAMINED		DATE	-	FEBRUARY 3, 2025
PASSED		REVISED	-	
		REVISED	-	

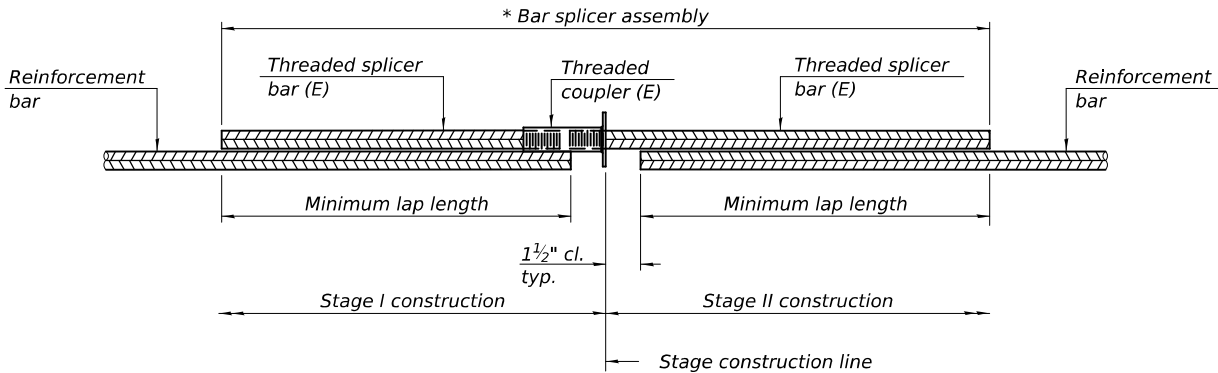
STATE OF ILLINOIS
DEPARTMENT OF TRANSPORTATION

CULVERT DETAILS
STRUCTURE NO. 026-2023

SHEET 10 OF 12 SHEETS

F.A.P. RTE.	SECTION	COUNTY	TOTAL SHEETS	SHEET NO.
750	(114)B-1	FAYETTE	28	22
CONTRACT NO. 74327				
ILLINOIS FED. AID PROJECT				

MODEL: 0262023-74327-011.dgn
FILE NAME: p:\w\lido-pw\benley.com\PWIDOT\Documents\IDOT Offices\Bureau of Bridges and Structures\OBM Projects\0262023\CADData\Bridge\0262023-74327-Design.dgn



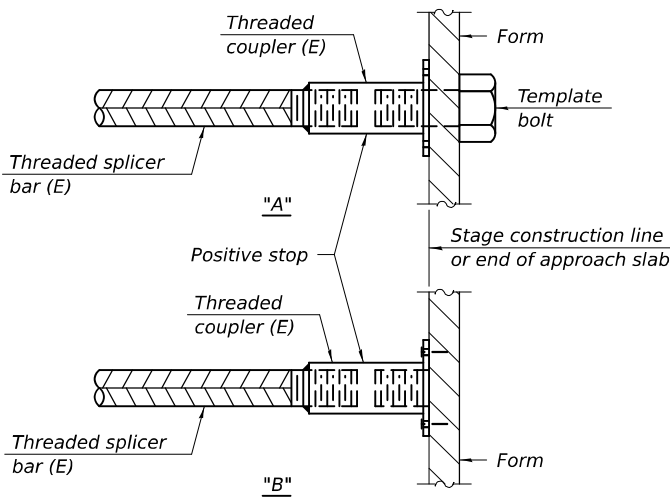
STANDARD BAR SPLICER ASSEMBLY PLAN

Only bar splicer assemblies as presented on the approved QPL list may be used.

Threaded splicer bar length = min. lap length + 1½" + thread length

* Epoxy not required on Bar Splicer Assembly components used in conjunction with black bars.

Location	Bar size	No. assemblies required	Minimum lap length
Top slab	#5	67	2'-2"
Walls	#5	21	2'-9"
Bottom slab	#5	57	2'-9"

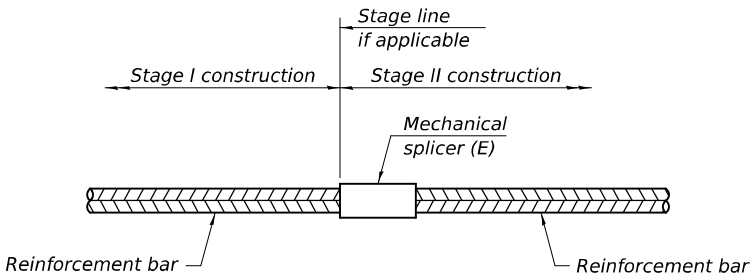


INSTALLATION AND SETTING METHODS

"A" : Set bar splicer assembly by means of a template bolt.

"B" : Set bar splicer assembly by nailing to wood forms or cementing to steel forms.

(E) : Indicates epoxy coating.



STANDARD MECHANICAL SPLICER



Location	Bar size	No. assemblies required

Notes:
Splicer bars shall be deformed with threaded ends and have a minimum 60 ksi yield strength.
All reinforcement shall be lapped and tied to the splicer bars.
Bar splicer assemblies shall be epoxy coated according to the requirements for reinforcement bars. See Section 508 of the Standard Specifications.
See approved list of bar splicer assemblies and mechanical splicers for alternatives.

BSD-1

5-15-2023

DESIGNED -	RYAN P. NEGANGARD
CHECKED -	DAVID H. RICHTER
DRAWN -	DENNIS A. POP
CHECKED -	R.P.N. / D.H.R.

EXAMINED	 ENGINEER OF BRIDGE DESIGN
PASSED	 ENGINEER OF BRIDGES AND STRUCTURES

DATE -	FEBRUARY 3, 2025
REVISED -	
REVISED -	


STATE OF ILLINOIS
DEPARTMENT OF TRANSPORTATION

BAR SPLICER ASSEMBLY AND MECHANICAL DETAILS
STRUCTURE NO. 026-2023

SHEET 11 OF 12 SHEETS

F.A.P. RTE.	SECTION	COUNTY	TOTAL SHEETS	SHEET NO.
750	(114)B-1	FAYETTE	28	23
CONTRACT NO. 74327				
		ILLINOIS	FED. AID PROJECT	

MODEL: 0262023-74327-012.dgn
FILE NAME: p:\w\lido-pw\benley.com\PWIDOT\Documents\IDOT Offices\Bureau of Bridges and Structures\OBM Projects\0262023\CADData\Bridge\0262023-74327-Design.dgn



Illinois Department of Transportation

Division of Highways
District - Materials

SOIL BORING LOG

Page 1 of 1

Date 9/22/22

ROUTE FAP 750 (IL-185)

DESCRIPTION IL-185 Over Lone Grove Branch Tributary

LOGGED BY E. Sandschafer

SECTION (114B1)B-1

LOCATION Southwest 1/4 of Southwest 1/4, SEC. 24, TWP. 5N, RNG. 3E, 3rd PM,
Latitude N 38.868000, Longitude W 88.825410

COUNTY Fayette

DRILLING METHOD Hollow stem auger & split spoon

HAMMER

Auto ETR = 91.8% @ 57.4 bpm

STRUCT. NO. 026-0068 (Existing)
Station 780+14

BORING NO. 1 East Abutment
Station 780+65
Offset 13.0 ft LT
Ground Surface Elev. 576.09 ft

D E P T H	B L O W S	U C S	M O I S T	Surface Water Elev. 569.83 ft	D E P T H	B L O W S	U C S	M O I S T
H	S	Qu	T		H	S	Qu	T
				Stream Bed Elev. 568.43 ft				
				Groundwater Elev.:				
				First Encounter Dry ft				
				Upon Completion Dry ft				
				After 0 Hrs. Backfilled ft				

Asphalt 575.39

Grey, SILTY CLAY

Very soft, moist

Stiff

Medium

Very stiff, moist, brown, SANDY CLAY

Very stiff, moist, grey, CLAY LOAM Till

Very dense, moist, grey, SANDY LOAM Till

556.09-20

Very dense, wet, grey, SANDY CLAY Till

Benchmark: BM 119 - Chiseled Square on South End of West Wingwall of SN 026-0068, Sta. 779+02, 49.8 feet RT. Elevation = 575.718 feet End of Boring

27 37


NT NT

7

SOIL BORING 026-2023 (OLD 0068) 2022.GPJ IL DOT.GDT 3/8/24

The Unconfined Compressive Strength (UCS) Failure Mode is indicated by (B-Bulge, S-Shear, P-Penetrometer, E-Estimated)
The SPT (N value) is the sum of the last two blow values in each sampling zone (AASHTO T206), WH-Weight of Hammer, NR-No Recovery, NT-Not Tested.

BBS form 137 (Rev. 8-99)



Illinois Department of Transportation

Division of Highways
District - Materials

SOIL BORING LOG

Page 1 of 1

Date 9/22/22

ROUTE FAP 750 (IL-185)

DESCRIPTION IL-185 Over Lone Grove Branch Tributary

LOGGED BY E. Sandschafer

SECTION (114B1)B-1

LOCATION Southwest 1/4 of Southwest 1/4, SEC. 24, TWP. 5N, RNG. 3E, 3rd PM,
Latitude N 38.867996, Longitude W 88.825645

COUNTY Fayette

DRILLING METHOD Hollow stem auger & split spoon

HAMMER

Auto ETR = 91.8% @ 57.4 bpm

STRUCT. NO. 026-0068 (Existing)
Station 780+14

BORING NO. 2 West Abutment
Station 779+84
Offset 13.0 ft LT
Ground Surface Elev. 576.13 ft

D E P T H	B L O W S	U C S	M O I S T	Surface Water Elev. 569.83 ft	D E P T H	B L O W S	U C S	M O I S T
H	S	Qu	T		H	S	Qu	T
				Stream Bed Elev. 568.43 ft				
				Groundwater Elev.:				
				First Encounter 561.6 ft				
				Upon Completion 561.1 ft				
				After 0 Hrs. Backfilled ft				

Asphalt 575.43

Grey, SILTY CLAY

Medium, moist

Soft, wet, grey, SILTY LOAM

Medium, moist, grey, SILTY CLAY LOAM

Medium, moist, grey, CLAY LOAM

Very stiff, moist, brown, CLAY LOAM Till

Medium, moist, brown, fine-grained, SAND 19.5% passing #200 sieve

Very stiff, moist, grey, SANDY CLAY Till

Hard, wet, grey, CLAY LOAM Till

556.13-20

Hard, moist, grey, CLAY LOAM Till

Benchmark: BM 119 - Chiseled Square on South End of West Wingwall of SN 026-0068, Sta. 779+02, 49.8 feet RT. Elevation = 575.718 feet End of Boring

13 15

7.9 BS



9

SOIL BORING 026-2023 (OLD 0068) 2022.GPJ IL DOT.GDT 3/8/24

The Unconfined Compressive Strength (UCS) Failure Mode is indicated by (B-Bulge, S-Shear, P-Penetrometer, E-Estimated)
The SPT (N value) is the sum of the last two blow values in each sampling zone (AASHTO T206), WH-Weight of Hammer, NR-No Recovery, NT-Not Tested.

BBS form 137 (Rev. 8-99)

DESIGNED	-	RYAN P. NEGANGARD
CHECKED	-	DAVID H. RICHTER
DRAWN	-	DENNIS A. POP
CHECKED	-	R.P.N. / D.H.R.

EXAMINED		DATE	-	FEBRUARY 3, 2025
PASSED		REVISED	-	
	ENGINEER OF BRIDGES AND STRUCTURES	REVISED	-	

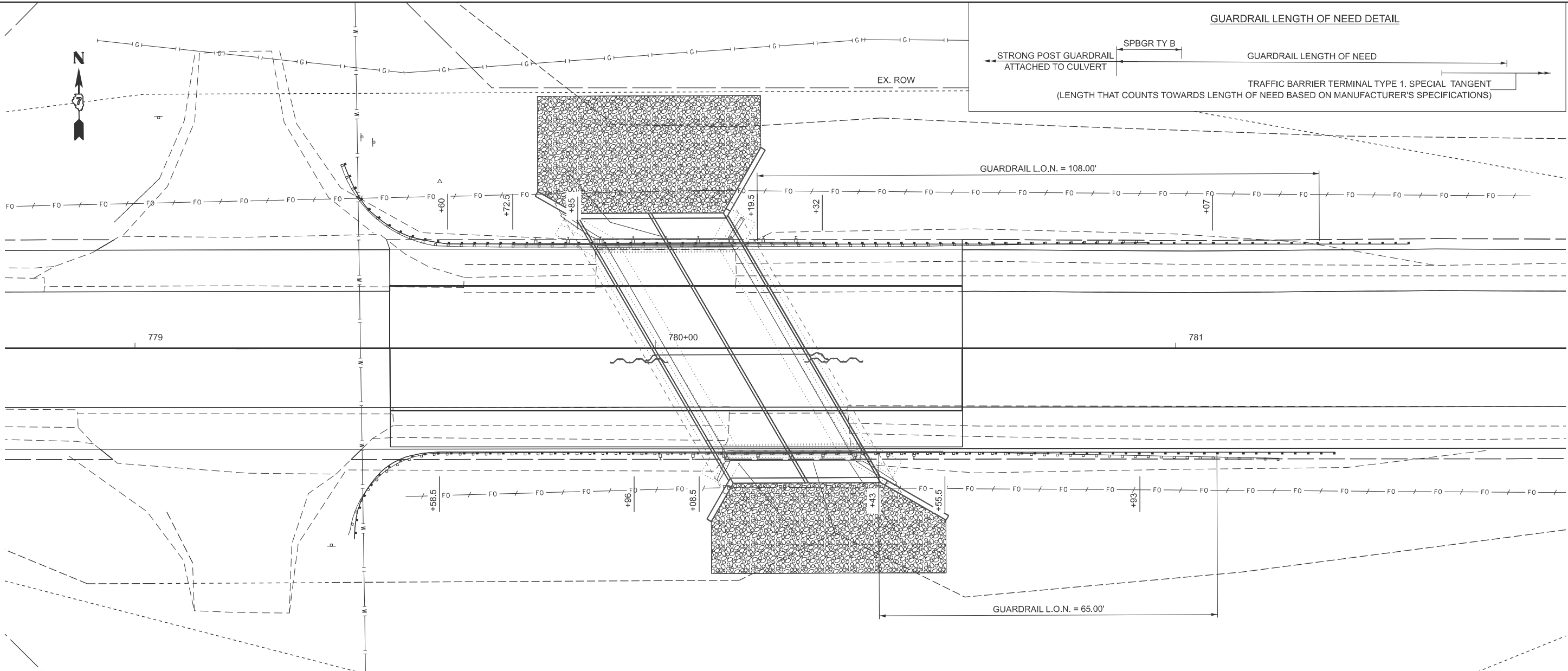
STATE OF ILLINOIS
DEPARTMENT OF TRANSPORTATION

SOIL BORING LOGS
STRUCTURE NO. 026-2023

SHEET 12 OF 12 SHEETS

F.A.P. RTE.	SECTION	COUNTY	TOTAL SHEETS	SHEET NO.
750	(114)B-1	FAYETTE	28	24
				CONTRACT NO. 74327
		ILLINOIS	FED. AID PROJECT	

MODEL: EXCL-1 - Guardrail Details 10 scale [Sheet]
FILE NAME: c:\pw_work\walkm\09866501D714327-sht-details-guardrail.dgn



STATIONS		SIDE	63200310	63000001	X6330725	63000007	63000030	63100167	63100045	78200005	72501000
			GUARDRAIL	STEEL PLATE BEAM	STEEL PLATE BEAM	STEEL PLATE BEAM	STRONG POST	TRAFFIC BARRIER	TRAFFIC BARRIER	GUARDRAIL	TERMINAL
			REMOVAL	GUARDRAIL TYPE A,	GUARDRAIL	GUARDRAIL TYPE B,	GUARDRAIL ATTACHED	TERMINAL, TYPE 1	TERMINAL, TYPE 2	REFLECTORS	MARKER - DIRECT
			FOOT	6 FOOT POSTS	(SHORT RADIUS)	6 FOOT POSTS	TO CULVERT	(SPECIAL) TANGENT	EACH	TYPE A	APPLIED
			163.50	FOOT	FOOT	FOOT	FOOT	EACH	EACH	EACH	EACH
779+31.0	780+94.5	RT									
		RT							1.0		1.0
		RT			25.0						
779+60.0	779+72.5	RT		12.5							
779+72.5	779+85.0	RT				12.5					
779+85.0	780+19.5	RT					34.5				
780+19.5	780+32.0	RT				12.5					
780+32.0	781+07.0	RT		75.0							
781+07.0	781+44.5	RT						1.0			1.0
779+31.0	781+19.5	LT	188.5								
		LT							1.0		1.0
		LT			25.0						
779+58.5	779+96.0	LT		37.5							
779+96.0	780+08.5	LT				12.5					
780+08.5	780+43.0	LT					34.5				
780+43.0	780+55.5	LT				12.5					
780+55.5	780+93.0	LT		37.5							
780+93.0	781+30.5	LT						1.0			1.0
TOTALS:			352.0	162.5	50.0	50.0	69.0	2.0	2.0	8.0	4.0

USER NAME = Travis.Walk	DESIGNED - T. WALK	REVISED -
	DRAWN - T. WALK	REVISED -
	CHECKED -	REVISED -
PLOT DATE = 11/13/2024	DATE -	REVISED -

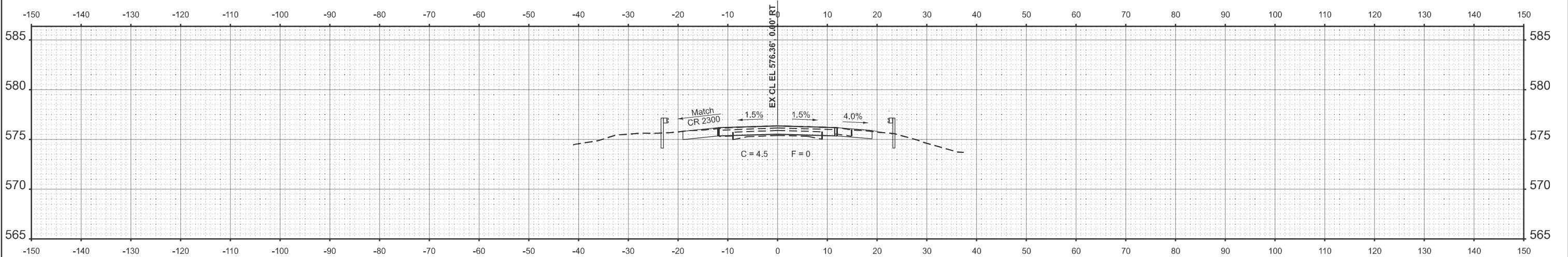
STATE OF ILLINOIS
DEPARTMENT OF TRANSPORTATION

GUARDRAIL DETAILS

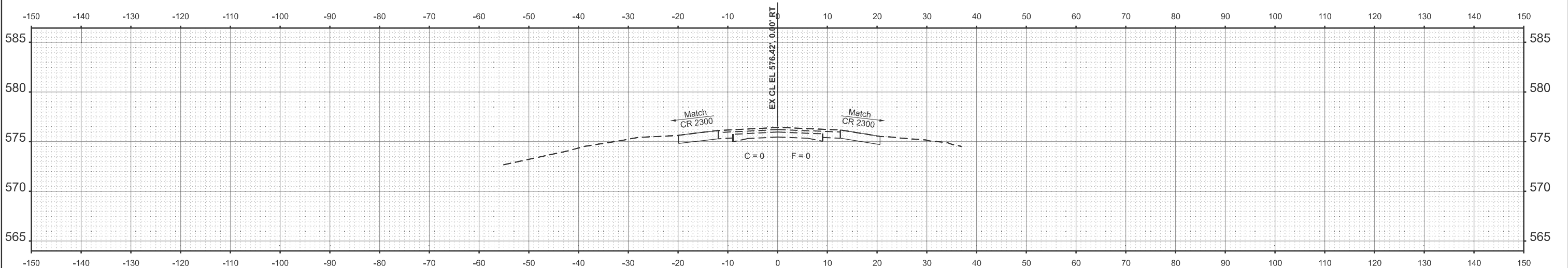
SCALE: 1"=10' SHEET 1 OF 1 SHEETS STA. 778+75.00 TO STA. 781+75.00

F.A.P RTE.	SECTION	COUNTY	TOTAL SHEETS	SHEET NO.
750	(114)B-1	FAYETTE	28	25
CONTRACT NO. 74327				
ILLINOIS FED. AID PROJECT				

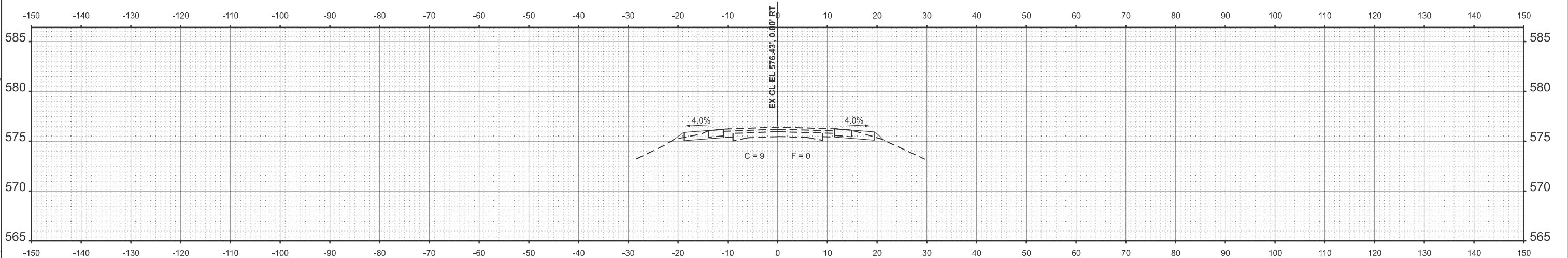
MODEL: ExCL - 778+50.00 [Sheet]
FILE NAME: c:\p\work\pilot\walkm\0986850\0714327-sh-cross sections.dgn



STA 779+50.00



STA 779+00.00



STA 778+50.00

	USER NAME = Travis.Walk	DESIGNED - T. WALK	REVISED -
		DRAWN - T. WALK	REVISED -
		CHECKED -	REVISED -
	PLOT DATE = 11/19/2024	DATE -	REVISED -

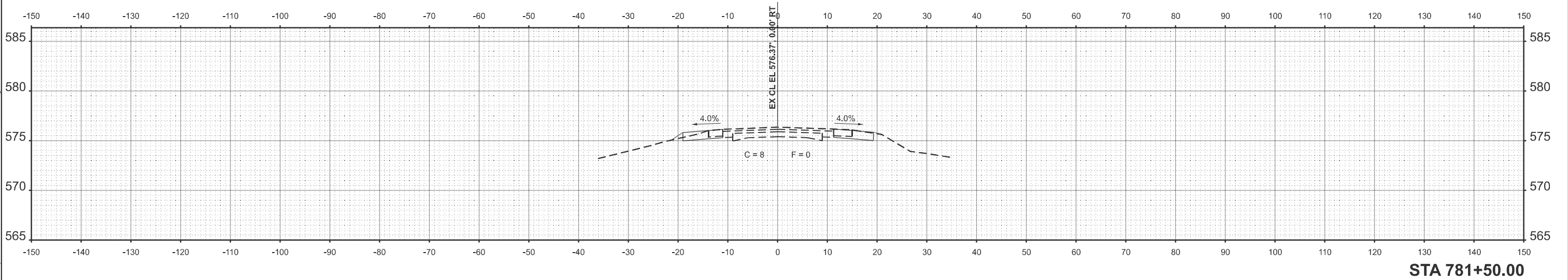
STATE OF ILLINOIS
DEPARTMENT OF TRANSPORTATION

CROSS SECTIONS

SCALE: 1"=10' SHEET 1 OF 3 SHEETS STA. TO STA.

F.A.P RTE.	SECTION	COUNTY	TOTAL SHEETS	SHEET NO.
750	(114)B-1	FAYETTE	28	26
CONTRACT NO. 74327				
ILLINOIS FED. AID PROJECT				

MODEL: EXCL - 781+50.00 [Sheet]
FILE NAME: c:\p\p_work\td\walkm\0986860\0714327-eh-cross sections.dgn



	USER NAME = Travis.Walk	DESIGNED - T. WALK	REVISED -	STATE OF ILLINOIS DEPARTMENT OF TRANSPORTATION	CROSS SECTIONS				F.A.P RTE.	SECTION	COUNTY	TOTAL SHEETS	SHEET NO.
		DRAWN - T. WALK	REVISED -						750	(114)B-1	FAYETTE	28	28
		CHECKED -	REVISED -						CONTRACT NO. 74327				
	PLOT DATE = 11/19/2024	DATE -	REVISED -		SCALE: 1"=10'	SHEET 3	OF 3	SHEETS	STA.	TO STA.	ILLINOIS FED. AID PROJECT		