

STORM SEWER SCHEDULE						
80% FEDERAL - 20% STATE						
STATION TO STATION		OFFSET	20800150	550A0050	55100500	Z0056608
			TRENCH BACKFILL	STORM SEWERS, CLASS A, TYPE 1 12"	STORMSEWER REMOVAL 12"	STORM SEWER (WATER MAIN REQUIREMENTS) 12 INCH
			CUYD	FOOT	FOOT	FOOT
12+00.6	12+19.0	RT	0.5	19		
12+19.0	12+86.0	RT	3.2	67		
15+91.0	16+05.3	RT	9.9		15	15
16+06.3	16+32.8	RT	2.5			28
19+94.7	20+06.0	LT	1.2	13		
26+54.0	26+45.0	RT	4.9			25
26+45.0	26+67.0	RT	3.4			22
26+54.0	26+62.5	LT	9.2			24
26+62.5	26+70.0	LT	0.9			7
28+26.0	28+40.4	RT	0.6	13		
28+31.0	100+05.0	LT	3.8	34		
STA. EQ. 28+60.52 (BK) = 100+00.00 (AH)						
TOTAL			40.1	146	15	121



STRUCTURE ADJUSTMENT SCHEDULE						
80% FEDERAL - 20% STATE						
LOCATION	STATION	OFFSET	60300105	60300305	60500050	60500060
			FRAMES AND GRATES TO BE ADJUSTED	FRAMES AND LIDS TO BE ADJUSTED	REMOVING CATCH BASINS	REMOVING INLETS
			EACH	EACH	EACH	EACH
5TH STREET	11+60	32.2' RT	1			
5TH STREET	11+88.08	0.3' RT		1		
5TH STREET	12+00.60	29.8' RT			1	
5TH STREET	12+13.23	40.8' LT		1		
5TH STREET	15+57.35	30.3' LT	1			
5TH STREET	15+66.08	0.7' RT		1		
5TH STREET	16+00	46.0' RT				1
5TH STREET	16+12	29.9' LT	1			
5TH STREET	19+48.49	30.8' LT	1			
5TH STREET	19+71.55	0.7' LT		1		
5TH STREET	19+92.53	39.3' RT	1			
5TH STREET	19+95.37	31.1' LT	1			
5TH STREET	20+07.24	1.4' LT		1		
5TH STREET	22+41.20	25.5' LT		1		
5TH STREET	22+43.12	0.7' LT		1		
5TH STREET	23+35.25	31.2' LT	1			
5TH STREET	23+80.47	31.8' LT	1			
5TH STREET	24+44.54	0.7' LT		1		
STA EQ - STA 28+60.52 (BK) = STA 100+00 (AH)						
5TH STREET	100+10.66	44.8' RT	1			
5TH STREET	100+14.70	31.2' LT		1		
5TH STREET	100+18.20	40.4' LT	1			
5TH STREET	100+32.84	0.7' LT		1		
5TH STREET	100+49.12	2.6' LT		1		
5TH STREET	100+79.03	42.5' LT	1			
SUB-TOTAL			11	11	1	1
80% FEDERAL - 20% CITY						
5TH STREET	15+30.77	37.9' RT	1			
5TH STREET	15+87.45	25.1' LT		1		
5TH STREET	19+87.73	33.4' LT		1		
SUB-TOTAL			1	2	0	0
TOTAL			12	13	1	1

MANHOLE AND INLET SCHEDULE							
80% FEDERAL - 20% STATE							
STRUCTURE NUMBER	STATION	OFFSET	28000510	60218500	60235700	60240220	X6026058
			INLET FILTERS	MANHOLES, TYPE A, 4'-DIAMETER, TYPE 3 FRAME AND GRATE	INLETS, TYPE A, TYPE 3 FRAME AND GRATE	INLETS, TYPE B, TYPE 3 FRAME AND GRATE	SANITARY MANHOLES WITH SPECIAL FRAME AND CLOSED LID
			EACH	EACH	EACH	EACH	EACH
1	12+00.60	29.8' RT		1			
2	12+19	22.5' RT	1			1	
3	12+86	32.5' RT	1		1		
4	15+91	34.0' RT					1
5	16+05.3	33.3' RT	1			1	
6	16+32.8	22.5' RT	1		1		
8	20+06	23.7' RT	1		1		
9	26+45	22.5' RT	1	1			
10	26+54	0.75' LT					1
11	26+62.5	22.5' LT	1			1	
12	26+67	22.5' RT	1		1		
13	26+70	22.5' LT	1		1		
14	28+26	24.5' RT	1		1		
16	28+31	24.5' LT	1		1		
STA. EQ. 28+60.52 (BK) = 100+00.00 (AH)							
17	100+05	24.5' LT	1	1			
TOTAL			12	3	7	3	2

⚠️ REVISED 2-20-2025

MODEL: D:\p\h\...
 FILE: NAME: P:\C\...
 PLOT DATE = 12/17/2024

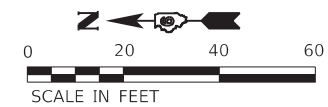
The Upchurch Group
 architects engineers surveyors
 Professional Design Firm Corporation
 123 North 15th Street
 Madison, IL 61738
 Phone: 317.235.3177
 License No. 154-003401
 e-mail: upchurchgroup@upchurchgroup.com

USER NAME = Sta57	DESIGNED - TLW	REVISED -
TUG PROJECT NO. 3120066-02	DRAWN -	REVISED -
PLOT SCALE = 40.0000' / in.	CHECKED - SJF	REVISED -
PLOT DATE = 12/17/2024	DATE -	REVISED -

STATE OF ILLINOIS
DEPARTMENT OF TRANSPORTATION

SCHEDULE OF QUANTITIES			
SCALE:	SHEET 9	OF 12 SHEETS	STA. TO STA.

F.A.P. RTE.	SECTION	COUNTY	TOTAL SHEETS	SHEET NO.
666	(108Z)R,SW,TS	SANGAMON	115	28
CONTRACT NO. 72759			ILLINOIS FED. AID PROJECT	



LEGEND

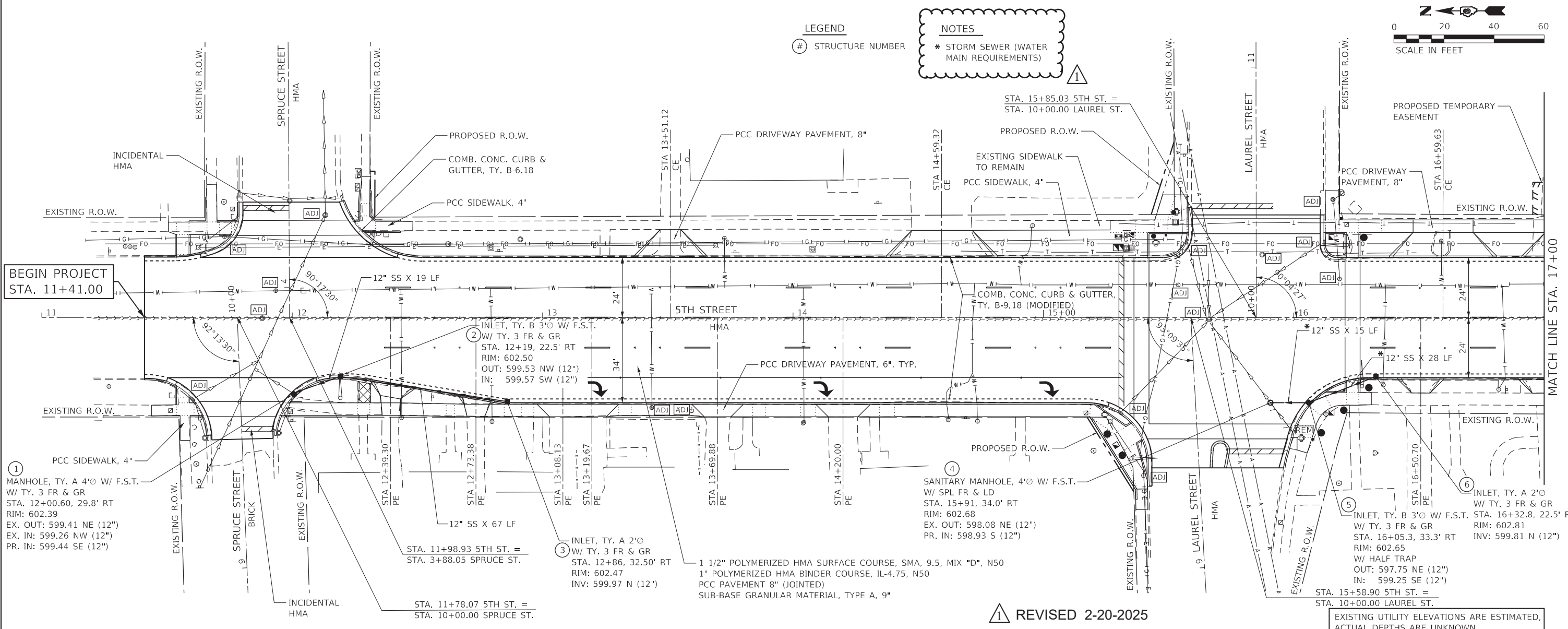
⊙ STRUCTURE NUMBER

NOTES

* STORM SEWER (WATER MAIN REQUIREMENTS)

DATE	
BY	
PLAN	
NO.	
NO.	
NO.	
NO.	
NO.	

DATE	
BY	
PROFILE	
NO.	
NO.	
NO.	
NO.	
NO.	



BEGIN PROJECT
STA. 11+41.00

MATCH LINE STA. 17+00

① MANHOLE, TY. A 4' Ø W/ F.S.T.
W/ TY. 3 FR & GR
STA. 12+00.60, 29.8' RT
RIM: 602.39
EX. OUT: 599.41 NE (12")
EX. IN: 599.26 NW (12")
PR. IN: 599.44 SE (12")

② INLET, TY. B 3' Ø W/ F.S.T.
W/ TY. 3 FR & GR
STA. 12+19.22.5' RT
RIM: 602.50
OUT: 599.53 NW (12")
IN: 599.57 SW (12")

③ INLET, TY. A 2' Ø
W/ TY. 3 FR & GR
STA. 12+86.32.50' RT
RIM: 602.47
INV: 599.97 N (12")

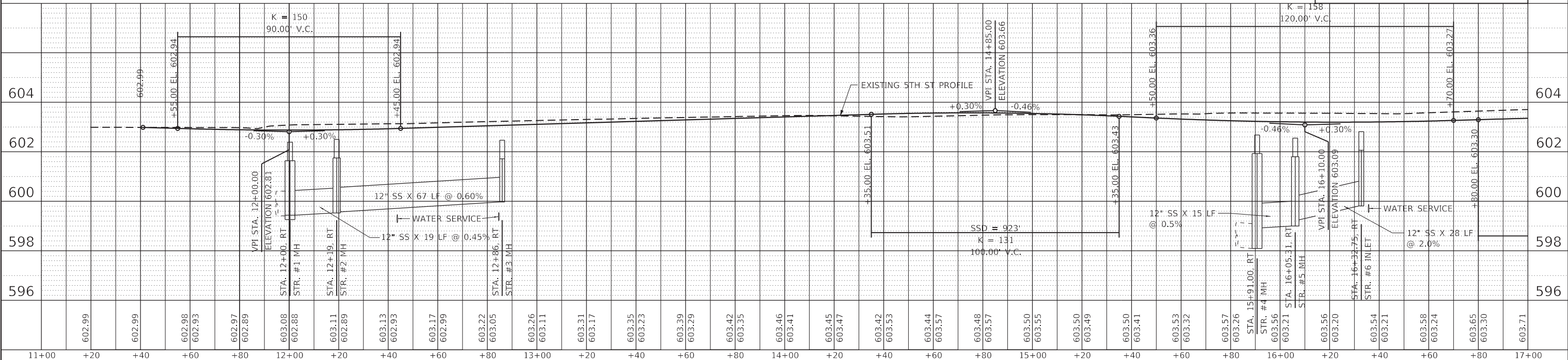
④ SANITARY MANHOLE, 4' Ø W/ F.S.T.
W/ SPL FR & LD
STA. 15+91.34.0' RT
RIM: 602.68
EX. OUT: 598.08 NE (12")
PR. IN: 598.93 S (12")

⑥ INLET, TY. A 2' Ø
W/ TY. 3 FR & GR
STA. 16+32.8, 22.5' RT
RIM: 602.81
INV: 599.81 N (12")

1 1/2" POLYMERIZED HMA SURFACE COURSE, SMA, 9.5, MIX "D", N50
1" POLYMERIZED HMA BINDER COURSE, IL-4.75, N50
PCC PAVEMENT 8" (JOINTED)
SUB-BASE GRANULAR MATERIAL, TYPE A, 9"

⚠ REVISED 2-20-2025

EXISTING UTILITY ELEVATIONS ARE ESTIMATED,
ACTUAL DEPTHS ARE UNKNOWN.



The Upchurch Group
architects engineers surveyors
123 North 15th Street
Morton, IL 61938
Phone: 312.353.1777
License No. 184-083401
e-mail: upchurchgroup@upchurchgroup.com

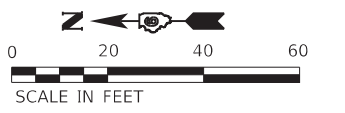
USER NAME	= Sta42	DESIGNED	- EAC	REVISED	2/19/2025
TUG PROJECT NO.	3120066-02	DRAWN	-	REVISED	-
PLOT SCALE	= 40.0000" / in.	CHECKED	- SJF	REVISED	-
PLOT DATE	= 2/19/2025	DATE	-	REVISED	-

**STATE OF ILLINOIS
DEPARTMENT OF TRANSPORTATION**

PLAN AND PROFILE

SCALE: 40.0000" / in. SHEET 1 OF 4 SHEETS STA. 11+00 TO STA. 17+00

F.A.P. R.T.E.	SECTION	COUNTY	TOTAL SHEETS	SHEET NO.
666	(1082)R,SW,TS	SANGAMON	115	35
CONTRACT NO. 72759				
ILLINOIS FED. AID PROJECT				

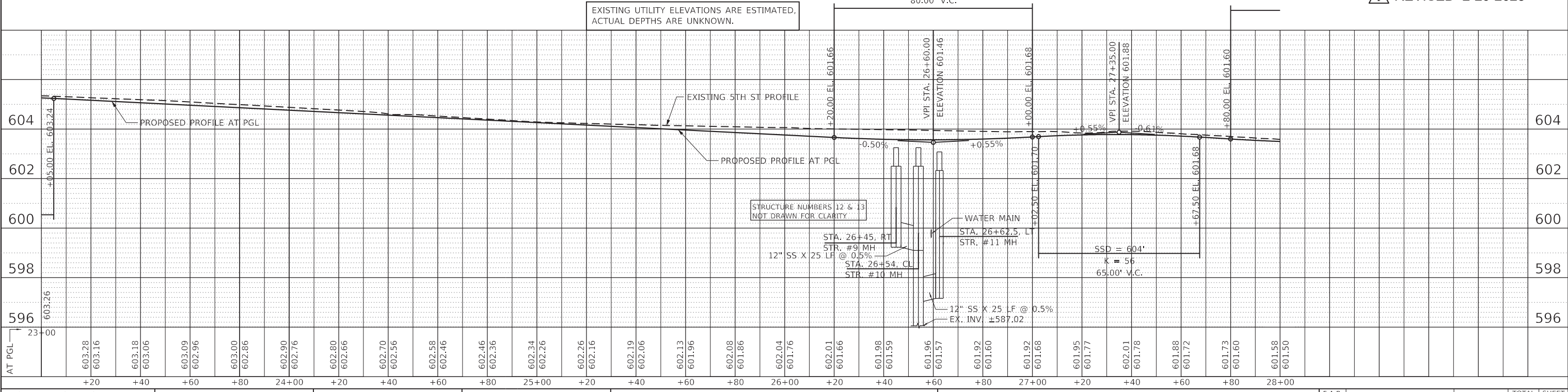
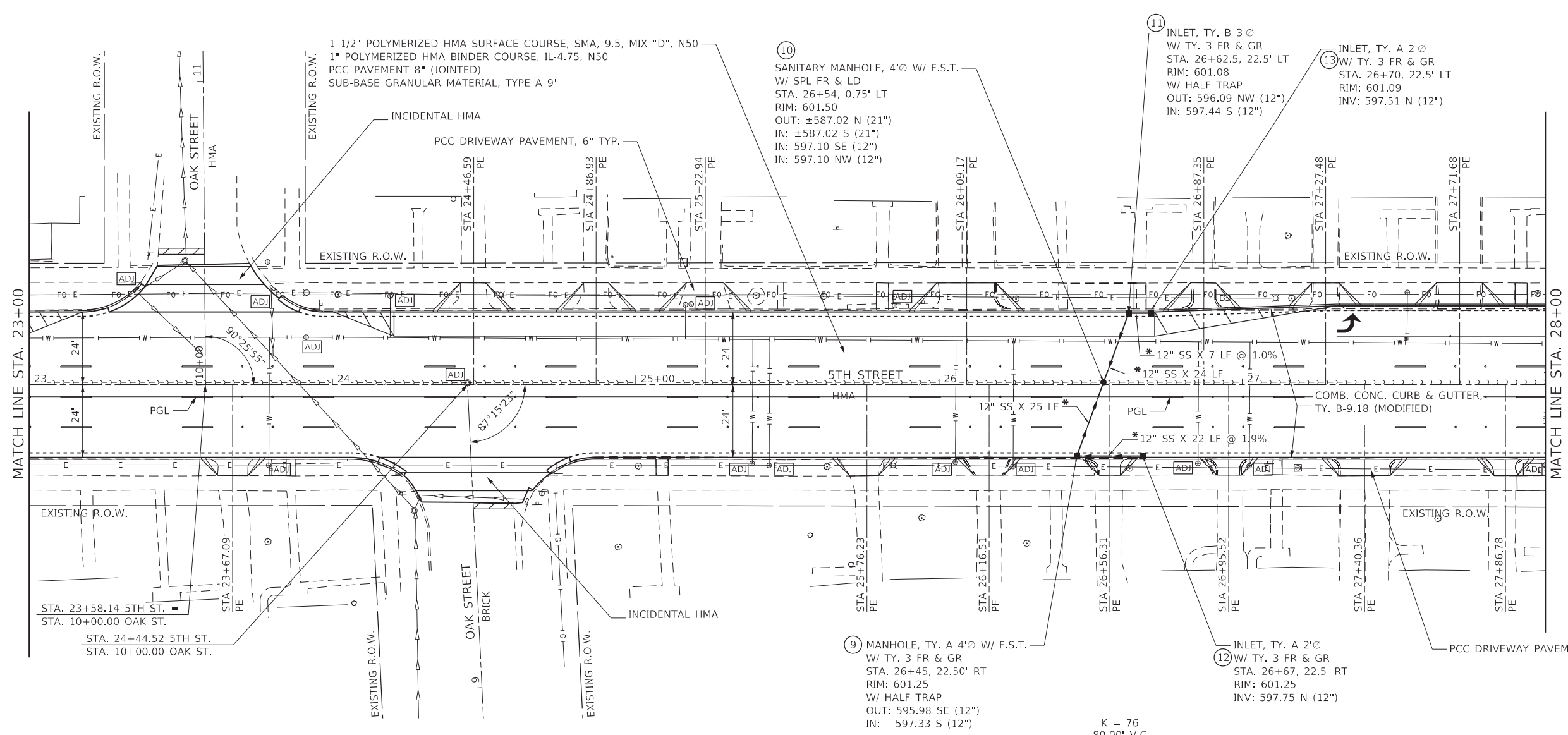


LEGEND
 # STRUCTURE NUMBER

NOTES
 * STORM SEWER (WATER MAIN REQUIREMENTS)

PLAN	DATE
SURVEYED	
PLOTTED	
ALIGNED	
CHECKED	
NO. _____	
FILE NAME: P:\CADD\DOT-DIST\1617B 156-011 var ph -HW0 #2 5th St 312006-00\Cad Sheets\1617759-1617B.dgn	

PROFILE	DATE
SURVEYED	
PLOTTED	
GRADES CHECKED	
NO. _____	
FILE NAME: P:\CADD\DOT-DIST\1617B 156-011 var ph -HW0 #2 5th St 312006-00\Cad Sheets\1617759-1617B.dgn	



REVISION 2-20-2025

EXISTING UTILITY ELEVATIONS ARE ESTIMATED,
ACTUAL DEPTHS ARE UNKNOWN.

STRUCTURE NUMBERS 12 & 13
NOT DRAWN FOR CLARITY

The Upchurch Group
 architects engineers surveyors
 123 North 15th Street
 Maitland, IL 61938
 Phone: 312.353.1777
 License No. 184-08340
 e-mail: upchurchgroup@upchurchgroup.com

USER NAME = Sta42	DESIGNED - EAC	REVISED 2/19/2025
TUG PROJECT NO. 3120066-02	DRAWN -	REVISED -
PLOT SCALE = 40,0000' / in.	CHECKED - SJF	REVISED -
PLOT DATE = 2/19/2025	DATE -	REVISED -

STATE OF ILLINOIS
DEPARTMENT OF TRANSPORTATION

PLAN AND PROFILE

SCALE: 40,0000' / in SHEET 3 OF 4 SHEETS STA. 23+00 TO STA. 28+00

F.A.P. RTE.	SECTION	COUNTY	TOTAL SHEETS	SHEET NO.
666	(108Z)R,SW,TS	SANGAMON	115	37
CONTRACT NO. 72759				
ILLINOIS FED. AID PROJECT				