

STATE OF ILLINOIS  
DEPARTMENT OF TRANSPORTATION

F.A.P. RTE.	SECTION	COUNTY	TOTAL SHEETS	SHEET NO.
336	2024-1002-N	MCHENRY	21	1
		ILLINOIS	CONTRACT NO. 62X36	

FOR INDEX OF SHEETS, SEE SHEET NO. 2

THE PROJECT IS LOCATED IN:

THE VILLAGE OF RINGWOOD  
THE VILLAGE OF RICHMOND  
RICHMOND TOWNSHIP  
MCHENRY TOWNSHIP

TRAFFIC DATA:

IL 31 (RICHMOND ROAD)  
ADT (2023): 6,800-10,600  
SPEED LIMIT: 50 MPH - 55 MPH  
OTHER PRINCIPAL ARTERIAL

PROPOSED  
HIGHWAY PLANS

F.A.P. ROUTE 336: IL 31 (RICHMOND ROAD)  
PIONEER ROAD TO U.S. 12  
SECTION: 2024-1002-N  
PROJECT: HSIP-71LV(949)  
MILLED RUMBLE STRIP  
MCHENRY COUNTY

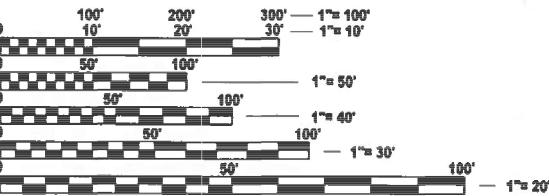
C-91-023-25

D-91-021-25



PROJECT ENDS  
STA 289+04.38

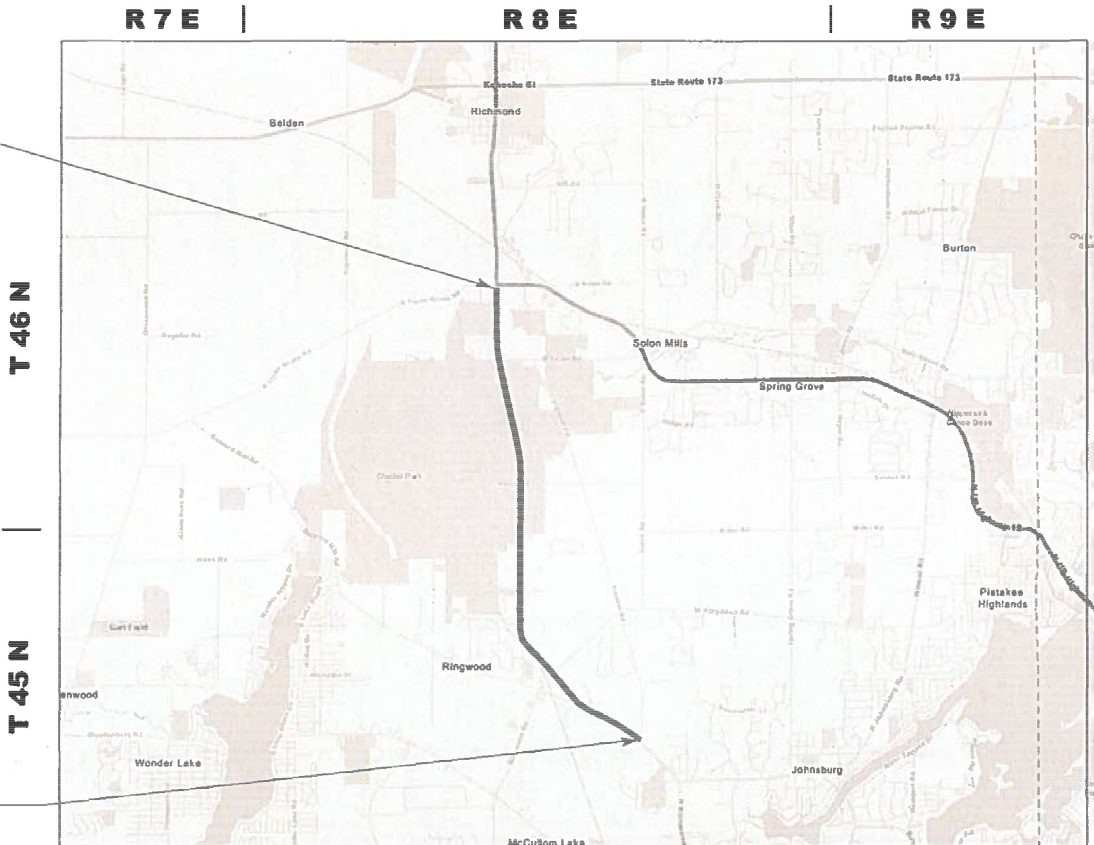
OMISSION  
STA 206+01.60 TO STA 207+69.51



FULL SIZE PLANS HAVE BEEN PREPARED USING STANDARD  
ENGINEERING SCALES. REDUCED SIZED PLANS WILL NOT  
CONFORM TO STANDARD SCALES. IN MAKING MEASUREMENTS  
ON REDUCED PLANS, THE ABOVE SCALES MAY BE USED.

J.U.L.I.E.  
JOINT UTILITY LOCATION INFORMATION FOR EXCAVATION  
1-800-892-0123  
OR 811

PROJECT BEGINS  
STA 14+24.81



RICHMOND AND MCHENRY TOWNSHIPS

GROSS LENGTH = 27,479.57 FT. = 5.204 MILE  
NET LENGTH = 27,311.66 FT. = 5.173 MILE

PROJECT ENGINEER: DAN WILGREEN, P.E. (847) 705-4240  
PROJECT MANAGER: J. ALAIN MIDY, P.E. (847) 221-3056

CONTRACT NO. 62X36

LOCATION MAP  
(NOT TO SCALE)

STATE OF ILLINOIS  
DEPARTMENT OF TRANSPORTATION

SUBMITTED Dec 17 20 24  
Jan 31 20 25 IR  
REGIONAL ENGINEER  
January 31 20 25  
ENGINEER OF DESIGN AND ENVIRONMENT  
January 31 20 25  
DIRECTOR OF HIGHWAYS PROJECT IMPLEMENTATION

PRINTED BY THE AUTHORITY  
OF THE STATE OF ILLINOIS

INDEX OF SHEETS

STATE STANDARDS

GENERAL NOTES

SHEET NO.

DESCRIPTION

STANDARD NO.

DESCRIPTION

1	TITLE SHEET
2	INDEX OF SHEETS, STATE STANDARDS, AND GENERAL NOTES
3	SUMMARY OF QUANTITIES
4-5	TYPICAL SECTIONS
6	RUMBLE STRIPS SCHEDULE
7-16	ROADWAY PLAN AND PROFILE
17	RUMBLE STRIPS FOR CENTERLINE, NON-FREEWAY (BD-55)
18	TRAFFIC CONTROL AND PROTECTION FOR SIDE ROADS, INTERSECTIONS, AND DRIVEWAYS (TC-10)
19	TYPICAL APPLICATIONS RAISED REFLECTIVE PAVEMENT MARKERS (SNOW-PLOW RESISTANT) (TC-11)
20	DISTRICT ONE TYPICAL PAVEMENT MARKING (TC-13)
21	ARTERIAL ROAD INFORMATION SIGN (TC-22)

000001-08	STANDARD SYMBOLS, ABBREVIATIONS, AND PATTERNS
642006-01	SHOULDER RUMBLE STRIPS, 8 IN
701006-05	OFF-RD OPERATIONS, 2L, 2W, 15' (4.5M) TO 24" (600MM) FROM PAVEMENT EDGE
701011-04	OFF-RD MOVING OPERATIONS, 2L, 2W, DAY ONLY
701201-05	LANE CLOSURE, 2L, 2W, DAY ONLY FOR SPEEDS GREATER THAN OR EQUAL TO 45 MPH
701301-04	LANE CLOSURE, 2L, 2W, SHORT TIME OPERATIONS
701306-04	LANE CLOSURE, 2L, 2W, SLOW MOVING OPERATIONS DAY ONLY, FOR SPEEDS GREATER THAN OR EQUAL TO 45 MPH
701311-03	LANE CLOSURE, 2L, 2W, MOVING OPERATIONS DAY ONLY
701501-06	URBAN LANE CLOSURE, 2L, 2W, UNDIVIDED
701701-10	URBAN LANE CLOSURE, MULTILANE INTERSECTION
701901-10	TRAFFIC CONTOL DEVICES

1. THE CONTRACTOR SHALL COORDINATE CONSTRUCTION ACTIVITIES WITH UTILITY COMPANIES, VILLAGES OF RINGWOOD AND RICHMOND.
2. THE CONTRACTOR WILL NOT BE ALLOWED TO SET UP A YARD OR FIELD OFFICE ON STATE PROPERTY WITHOUT WRITTEN PERMISSION FROM THE DEPARTMENT.
3. BEFORE BEGINNING ANY WORK, THE CONTRACTOR SHALL RETAIN AND RECORD FOR FUTURE REFERENCE, ALL EXISTING PAVEMENT MARKING LINES (AND RAISED REFLECTIVE PAVEMENT MARKERS) IN ORDER THAT THESE LOCATIONS CAN BE RE-ESTABLISHED FOR STRIPING. EXACT LOCATIONS OF ALL PAVEMENT MARKINGS SHALL BE AS DIRECTED BY THE ENGINEER.
4. THE RESIDENT ENGINEER SHALL CONTACT BRANDY KENNEDY AREA TRAFFIC FIELD ENGINEER, AT BRANDY.KENNEDY@ILLINOIS.GOV, A MINIMUM OF TWO (2) WEEKS PRIOR TO THE PLACEMENT OF PERMANENT PAVEMENT MARKINGS.
5. ANY DAMAGE TO EXISTING PAVEMENT MARKINGS OR RAISED REFLECTIVE PAVEMENT MARKERS OUTSIDE THE REMOVAL LINE SHOWN ON THE PLANS SHALL BE REPLACED AT THE CONTRACTOR'S EXPENSE.
6. ALL PAVEMENT MARKINGS SHALL BE PLACED THROUGHOUT THE IMPROVEMENT ACCORDING TO DISTRICT 1 TYPICAL PAVEMENT MARKING DETAIL.
7. FRAMES AND GRATES ADJUSTMENT OF PRIVATE UTILITIES WITHIN THE PROJECT LIMITS SHALL BE DONE BY THEIR RESPECTIVE OWNERS AND ARE NOT PART OF THIS CONTRACT.
8. THE CONTRACTOR SHALL CONTACT THE DISTRICT TRAFFIC CONTROL SUPERVISOR AT KALPANA.KANNAN-HOSADURGA@ILLINOIS.GOV A MINIMUM OF 72 HOURS IN ADVANCE OF BEGINNING WORK.
9. IT SHALL BE THE CONTRACTOR'S RESPONSIBILITY TO VERIFY ALL DIMENSIONS AND CONDITIONS EXISTING IN THE FIELD PRIOR TO ORDERING MATERIALS AND BEGINNING CONSTRUCTION.
10. THE CONTRACTOR SHALL BE REQUIRED TO PROVIDE ACCESS TO ABUTTING PROPERTY AT ALL TIMES DURING THE CONSTRUCTION OF THIS PROJECT.
11. RAISED REFLECTIVE PAVEMENT MARKERS SHALL BE PLACED THROUGHOUT THE IMPROVEMENT ACCORDING TO THE DISTRICT STANDARDS AS NOTED IN THE DETAIL.
12. DO NOT SCALE PLANS FOR CONSTRUCTION DIMENSIONS.

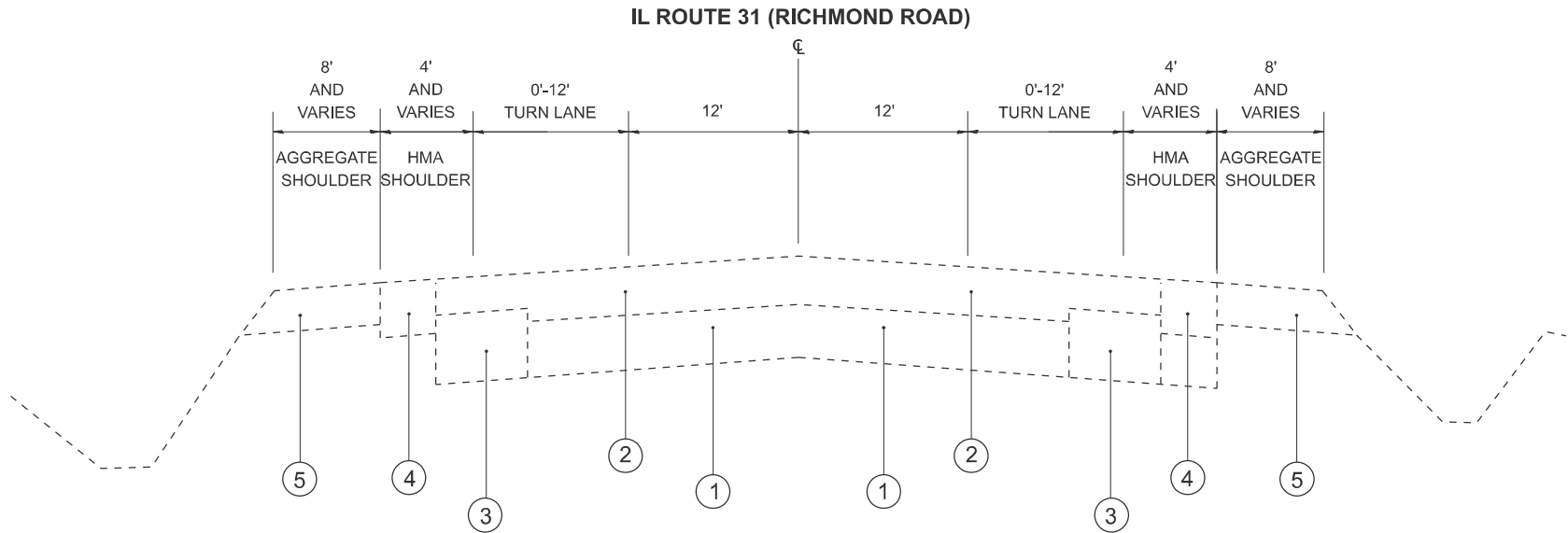
MODEL: GenNotesSh01 [Sheet]  
FILE NAME: c:\pw\work\pwtol\kalorm\40830992\102125-sh1-gennote.dgn

	USER NAME = Rana.Kalo	DESIGNED -	REVISED -	STATE OF ILLINOIS DEPARTMENT OF TRANSPORTATION	INDEX OF SHEETS, STATE STANDARDS, & GENERAL NOTES IL ROUTE 31 (RICHMOND ROAD) - U.S. ROUTE 12 TO PIONEER ROAD		F A P RTE	SECTION	COUNTY	TOTAL SHEETS	SHEET NO.
		DRAWN -	REVISED -				336	2024-1002-N	MCHENRY	21	2
	PLOT SCALE = \$\$CALE\$	CHECKED -	REVISED -				CONTRACT NO. 62X36				
	PLOT DATE = 1/22/2025	DATE -	REVISED -		SCALE:	SHEET	OF 1	SHEETS	STA.	TO STA.	ILLINOIS   FED. AID PROJECT

SUMMARY OF QUANTITIES					CONSTRUCTION TYPE CODE				
CODE NO	ITEM	UNIT	TOTAL QUANTITIES	90% FED 10% STATE 0021					
20100110	TREE REMOVAL (6 TO 15 UNITS DIAMETER)	UNIT	39.8	39.8					
20100210	TREE REMOVAL (OVER 15 UNITS DIAMETER)	UNIT	41.6	41.6					
28000400	PERIMETER EROSION BARRIER	FOOT	11384	11384					
64200108	SHOULDER RUMBLE STRIPS, 8 INCH	FOOT	47626	47626					
67100100	MOBILIZATION	L SUM	1	1					
70100450	TRAFFIC CONTROL AND PROTECTION,	L SUM	1	1					
	STANDARD 701201								
70100460	TRAFFIC CONTROL AND PROTECTION,	L SUM	1	1					
	STANDARD 701306								
70102620	TRAFFIC CONTROL AND PROTECTION,	L SUM	1	1					
	STANDARD 701501								
70102635	TRAFFIC CONTROL AND PROTECTION,	L SUM	1	1					
	STANDARD 701701								
78009004	MODIFIED URETHANE PAVEMENT	FOOT	50366	50366					
	MARKING - LINE 4"								
78009012	MODIFIED URETHANE PAVEMENT MARKING - LINE 12"	FOOT	81	81					
78100100	RAISED REFLECTIVE PAVEMENT MARKER	EACH	751	751					
78300200	RAISED REFLECTIVE PAVEMENT MARKER	EACH	751	751					
	REMOVAL								
X0326898	CENTER LINE - RUMBLE STRIP - 16"	FOOT	21311	21311					

SUMMARY OF QUANTITIES					CONSTRUCTION TYPE CODE				
CODE NO	ITEM	UNIT	TOTAL QUANTITIES	90% FED 10% STATE 0021					
X2100002	PRUNING FOR SAFETY AND EQUIPMENT	UNIT	1	1					
	CLEARANCE								
X6700407	ENGINEER'S FIELD OFFICE, TYPE A (D1)	CAL MO	6	6					
X7800815	HOT SPRAY THERMOPLASTIC PAVEMENT	FOOT	27208	27208					
	MARKING LINE - 4 INCH								
X7800855	HOT SPRAY THERMOPLASTIC PAVEMENT	FOOT	81	81					
	MARKING LINE - 12 INCH								
Z0013798	CONSTRUCTION LAYOUT	L SUM	1	1					
Z0030850	TEMPORARY INFORMATION SIGNING	SQ FT	51.4	51.4					

MODEL: TYPICAL SECTIONS-1 [Sheet]  
FILE NAME: c:\p\work\illinois\kabr\0030992\102125-sh-typical.dgn



### EXISTING TYPICAL SECTION

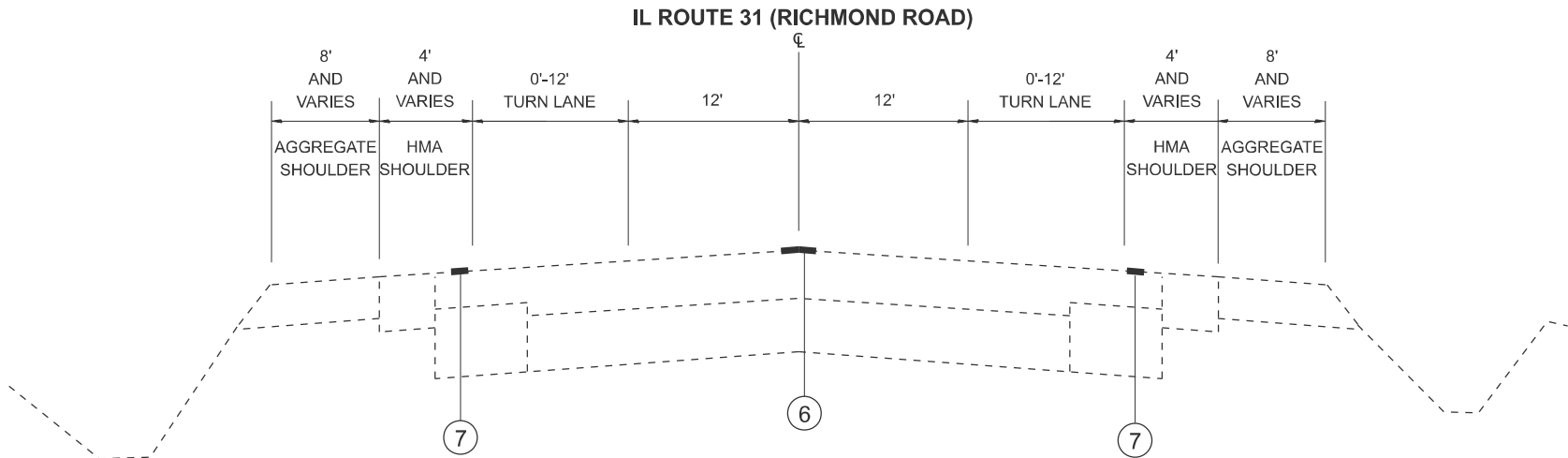
STA. 14+24.81 TO STA. 49+22.70  
STA. 59+75.02 TO STA. 70+14.11  
STA. 82+ 86.14 TO STA. 117+63.40  
STA. 130+77.25 TO STA. 206+01.60  
STA. 207+ 69.51 TO STA. 260+31.80  
STA. 271+ 69.92 TO STA. 280+72.80

### LEGEND:

- ① EXISTING PORTLAND CEMENT CONCRETE PAVEMENT 9-7-9
- ② EXISTING HOT-MIX ASPHALT PAVEMENT - VARIES 2½" TO 12½"
- ③ EXISTING HMA BASE COURSE WIDENING, 9"
- ④ EXISTING HMA SHOULDER, 8"
- ⑤ EXISTING AGGREGATE SHOULDER, TYPE B, 8"
- ⑥ PROPOSED CENTER LINE - RUMBLE STRIPS - 16"
- ⑦ PROPOSED SHOULDER RUMBLE STRIPS, 8"

### NOTES:

- SEE RUMBLE STRIPS DETAILS, IDOT STANDARDS 642006 - SHOULDER RUMBLE STRIPS, 8" AND BD 55 - RUMBLE STRIPS FOR CENTERLINE, NON - FREEWAY FOR DETAILS.
- RUMBLE STRIPS SHALL BE OMITTED WITHIN THE LIMITS OF STRUCTURES, DRIVEWAY ENTRANCES AND SIDEROADS.
- REFER TO RUMBLE STRIPS SCHEDULE FOR THE LOCATION OF THE RUMBLE STRIPS.



### PROPOSED TYPICAL SECTION

STA. 14+24.81 TO STA. 49+22.70  
STA. 59+75.02 TO STA. 70+14.11  
STA. 82+ 86.14 TO STA. 117+63.40  
STA. 130+77.25 TO STA. 206+01.60  
STA. 207+ 69.51 TO STA. 260+31.80  
STA. 271+ 69.92 TO STA. 280+72.80

USER NAME = Rana.Kalo	DESIGNED -	REVISED -
	DRAWN -	REVISED -
	CHECKED -	REVISED -
PLOT DATE = 1/8/2025	DATE -	REVISED -

STATE OF ILLINOIS  
DEPARTMENT OF TRANSPORTATION

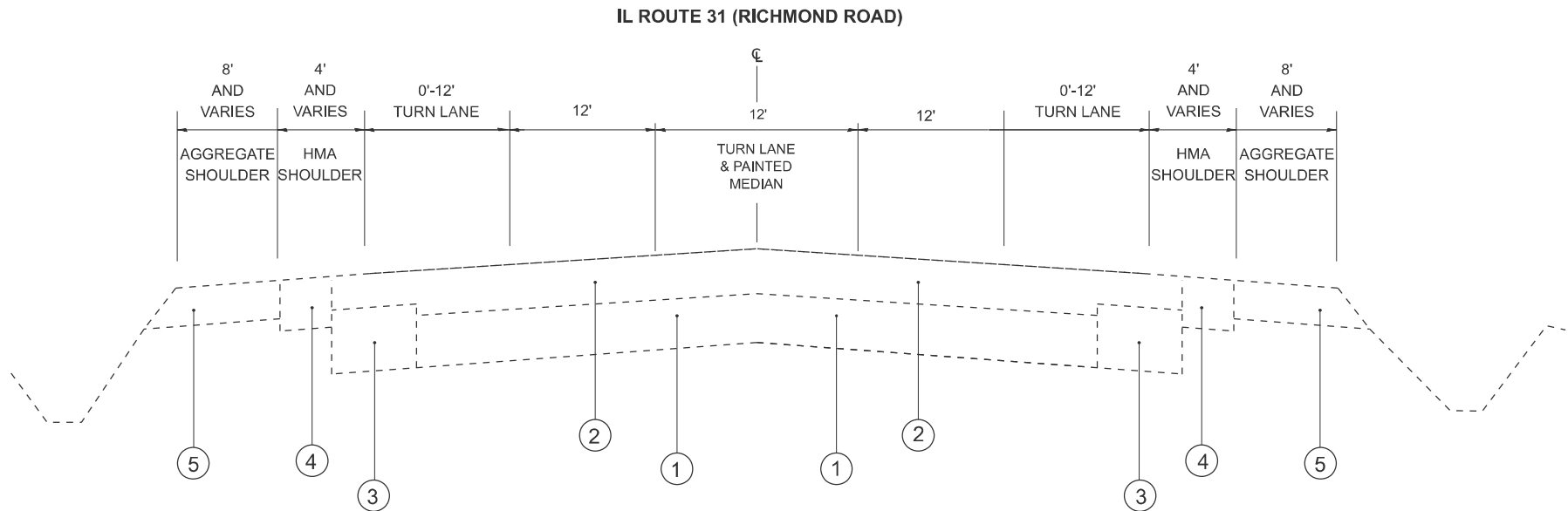
TYPICAL SECTIONS  
IL ROUTE 31 (RICHMOND ROAD) - U.S. ROUTE 12 TO PIONEER ROAD

SCALE: SHEET 1 OF 2 SHEETS STA. TO STA.

F.A.P RTE.	SECTION	COUNTY	TOTAL SHEETS	SHEET NO.
336	2024-1002-N	MCHENRY	21	4
CONTRACT NO. 62X36				
ILLINOIS FED. AID PROJECT				

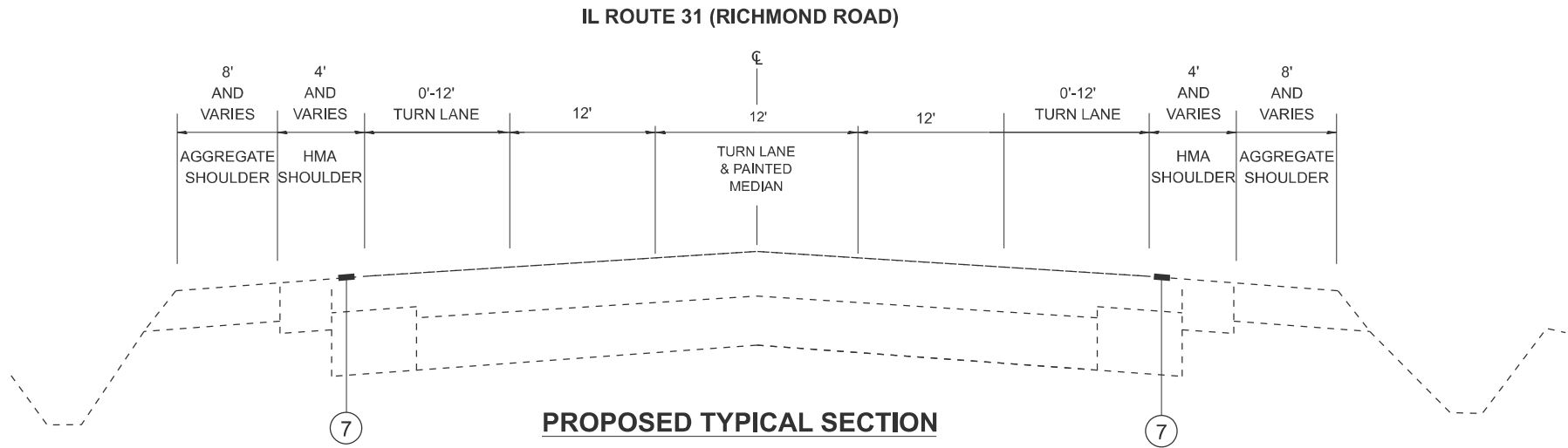


MODEL: TYPICAL SECTIONS-2 [Sheet]  
FILE NAME: c:\p\work\pilot\kabr\0303092\1012125-sh-typical.dgn



**EXISTING TYPICAL SECTION**

STA. 49+22.70 TO STA. 59+75.02  
STA. 70+14.11 TO STA. 82+ 86.14  
STA. 117+63.40 TO STA. 130+77.25  
STA. 260+31.80 TO STA. 271+ 69.92  
STA. 280+72.80 TO STA. 289+04.38



**PROPOSED TYPICAL SECTION**

STA. 49+22.70 TO STA. 59+75.02  
STA. 70+14.11 TO STA. 82+ 86.14  
STA. 117+63.40 TO STA. 130+77.25  
STA. 260+31.80 TO STA. 271+ 69.92  
STA. 280+72.80 TO STA. 289+04.38

**LEGEND:**

- ① EXISTING PORTLAND CEMENT CONCRETE PAVEMENT 9-7-9
- ② EXISTING HOT-MIX ASPHALT PAVEMENT - VARIES 2½" TO 12½"
- ③ EXISTING HMA BASE COURSE WIDENING, 9"
- ④ EXISTING HMA SHOULDER, 8"
- ⑤ EXISTING AGGREGATE SHOULDER, TYPE B, 8"
- ⑥ PROPOSED CENTER LINE - RUMBLE STRIPS - 16"
- ⑦ PROPOSED SHOULDER RUMBLE STRIPS, 8"

**NOTES:**

- SEE RUMBLE STRIPS DETAILS, IDOT STANDARDS 642006 - SHOULDER RUMBLE STRIPS, 8" AND BD 55 - RUMBLE STRIPS FOR CENTERLINE, NON - FREEWAY FOR DETAILS.
- RUMBLE STRIPS SHALL BE OMITTED WITHIN THE LIMITS OF STRUCTURES, DRIVEWAY ENTRANCES AND SIDEROADS.
- REFER TO RUMBLE STRIPS SCHEDULE FOR THE LOCATION OF THE RUMBLE STRIPS.

	USER NAME = Rana.Kalo	DESIGNED -	REVISED -	STATE OF ILLINOIS DEPARTMENT OF TRANSPORTATION	TYPICAL SECTIONS IL ROUTE 31 (RICHMOND ROAD) - U.S. ROUTE 12 TO PIONEER ROAD			F.A.P RTE.	SECTION	COUNTY	TOTAL SHEETS	SHEET NO.
		DRAWN -	REVISED -					336	2024-1002-N	MCHENRY	21	5
		CHECKED -	REVISED -					CONTRACT NO. 62X36				
	PLOT DATE = 1/8/2025	DATE -	REVISED -		SCALE:	SHEET 2	OF 2	SHEETS	STA.	TO STA.	ILLINOIS FED. AID PROJECT	

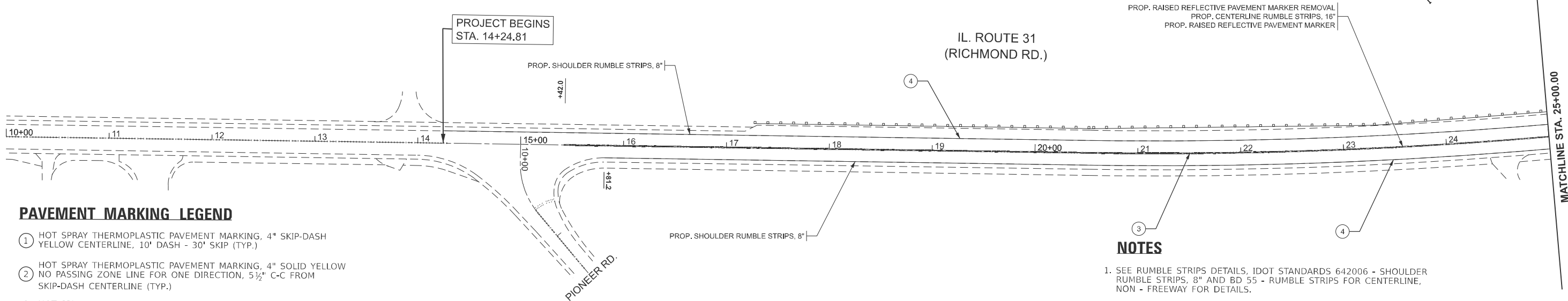
RUMBLE STRIPS FOR CENTERLINE, NON-FREEWAY, 16 INCHES	
FROM STA.	TO STA.
15+42	49+23
59+75	70+14
82+86	99+33
99+90	108+73
109+64	117+63
130+77	182+74
183+39	206+02
207+70	249+93
250+56	260+32
271+70	280+73

SHOULDER RUMBLE STRIPS, 8 INCHES			
RT		LT	
FROM STA.	TO STA.	FROM STA.	TO STA.
15+81	24+42	14+25	35+06
24+79	36+96	35+44	55+31
37+81	45+47	56+94	60+63
45+70	46+20	60+99	61+54
46+54	51+32	61+83	62+52
56+93	61+78	62+79	64+74
62+40	65+38	65+58	68+19
65+69	75+53	68+46	68+94
76+53	79+03	69+18	73+35
79+60	81+34	76+46	78+62
81+96	82+77	79+27	81+34
83+47	90+65	82+12	98+78
90+97	102+47	102+82	108+58
102+88	106+06	109+69	112+17
106+26	111+10	112+74	113+74
114+58	117+42	114+26	123+60
117+97	119+33	124+86	127+71
125+19	134+86	127+90	144+69
135+43	182+63	145+31	145+92
183+55	198+77	146+38	147+22
199+16	205+95	147+75	166+51
207+62	249+66	167+29	170+98
250+82	255+82	171+61	182+60
256+21	256+54	183+55	188+47
256+79	257+38	188+80	190+16
257+73	259+12	190+41	206+09
259+35	259+62	207+77	239+19
259+87	264+99	240+92	248+81
265+29	266+68	249+38	250+71
267+70	283+44	251+59	254+12
		254+77	263+25
		263+56	265+93
		271+58	274+42
		274+73	285+27

NOTES:

1. FINAL LOCATIONS FOR THE RUMBLE STRIPS ARE TO BE DETERMINED IN THE FIELD BY THE RESIDENT ENGINEER.
1. SEE RUMBLE STRIPS DETAILS, IDOT STANDARDS 642006 - SHOULDER RUMBLE STRIPS, 8" AND BD 55 - RUMBLE STRIPS FOR CENTERLINE, NON - FREEWAY FOR DETAILS.
2. RUMBLE STRIPS SHALL BE OMITTED WITHIN THE LIMITS OF STRUCTURES, DRIVEWAY ENTRANCES AND SIDEROADS.

MODEL: Schedule01 [Sheet]  
FILE NAME: c:\p\work\dot\kalor\0930992\102125-shr-schedule.dgn



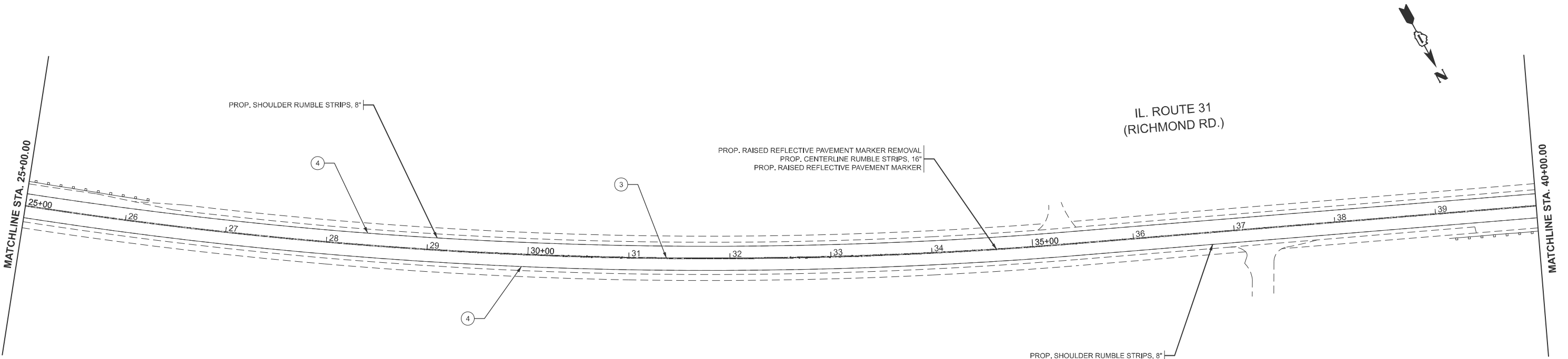
PAVEMENT MARKING LEGEND

- ① HOT SPRAY THERMOPLASTIC PAVEMENT MARKING, 4" SKIP-DASH YELLOW CENTERLINE, 10' DASH - 30' SKIP (TYP.)
- ② HOT SPRAY THERMOPLASTIC PAVEMENT MARKING, 4" SOLID YELLOW NO PASSING ZONE LINE FOR ONE DIRECTION, 5½" C-C FROM SKIP-DASH CENTERLINE (TYP.)
- ③ HOT SPRAY THERMOPLASTIC PAVEMENT MARKING, 4" DOUBLE SOLID YELLOW LINE, 2 @ 11" C-C (TYP.)
- ④ MODIFIED URETHANE PAVEMENT MARKING, 4" SOLID WHITE EDGE LINE (TYP.)
- ⑤ MODIFIED URETHANE PAVEMENT MARKING, 12" SOLID DIAGONAL WHITE LINE (TYP.)

PROP. RAISED REFLECTIVE PAVEMENT MARKER REMOVAL  
PROP. CENTERLINE RUMBLE STRIPS, 16"  
PROP. RAISED REFLECTIVE PAVEMENT MARKER

NOTES

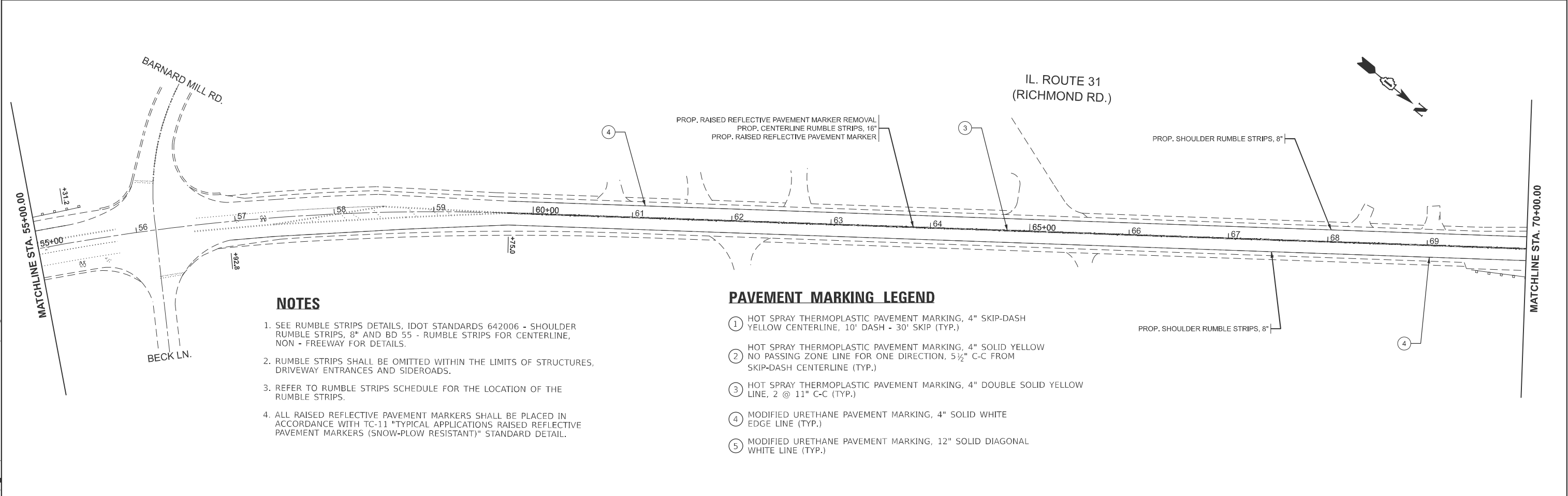
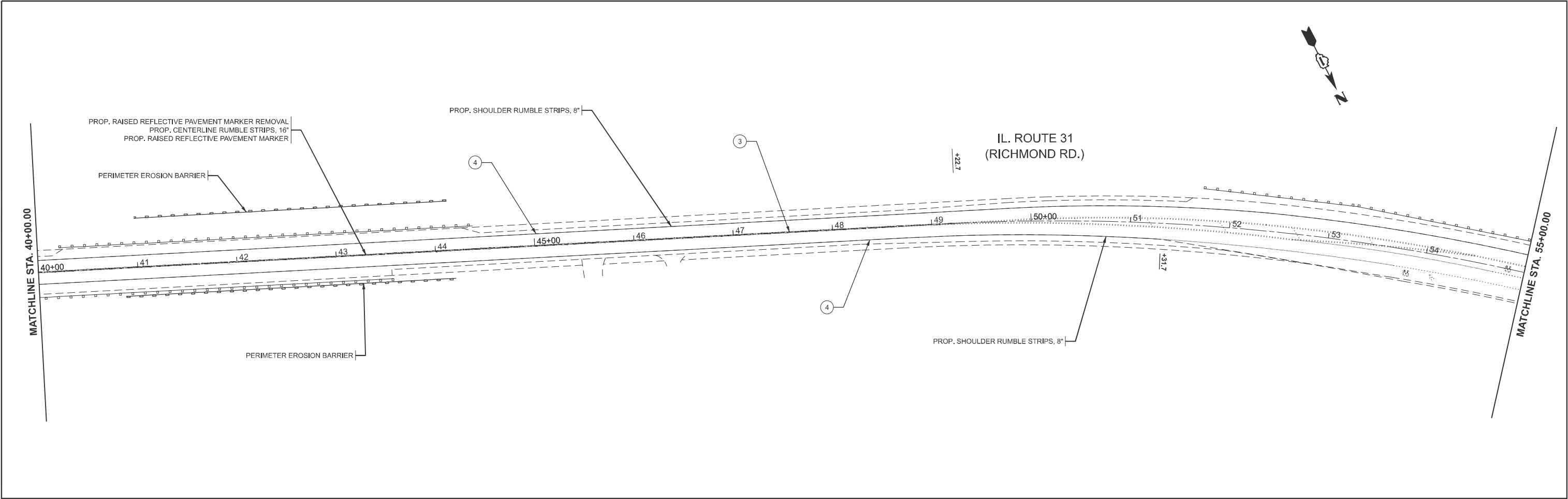
- SEE RUMBLE STRIPS DETAILS, IDOT STANDARDS 642006 - SHOULDER RUMBLE STRIPS, 8" AND BD 55 - RUMBLE STRIPS FOR CENTERLINE, NON - FREEWAY FOR DETAILS.
- RUMBLE STRIPS SHALL BE OMITTED WITHIN THE LIMITS OF STRUCTURES, DRIVEWAY ENTRANCES AND SIDEROADS.
- REFER TO RUMBLE STRIPS SCHEDULE FOR THE LOCATION OF THE RUMBLE STRIPS.
- ALL RAISED REFLECTIVE PAVEMENT MARKERS SHALL BE PLACED IN ACCORDANCE WITH TC-11 "TYPICAL APPLICATIONS RAISED REFLECTIVE PAVEMENT MARKERS (SNOW-PLOW RESISTANT)" STANDARD DETAIL.



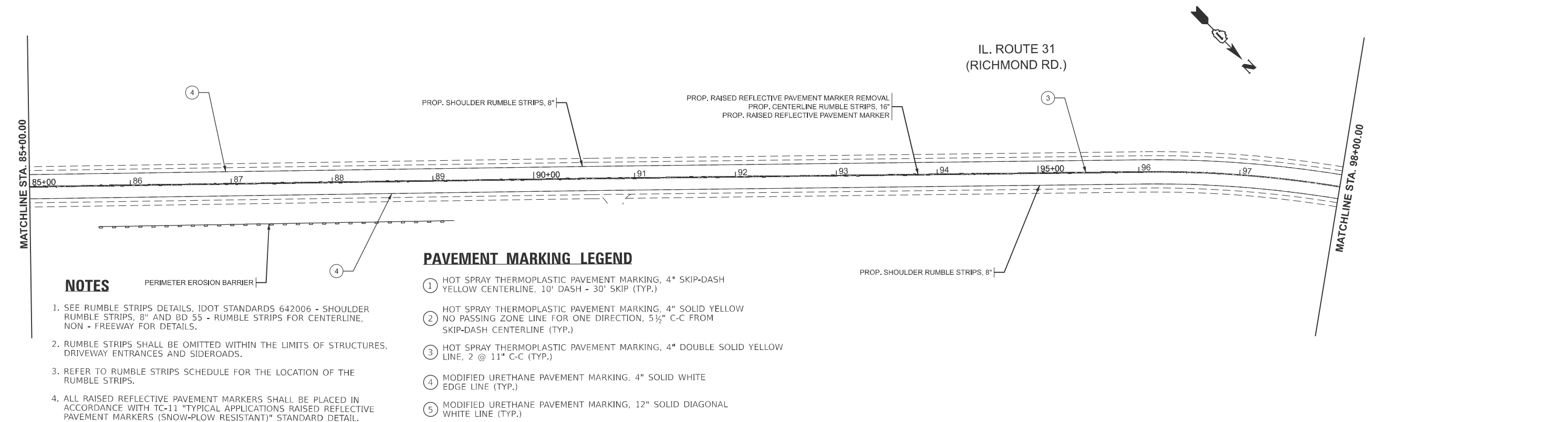
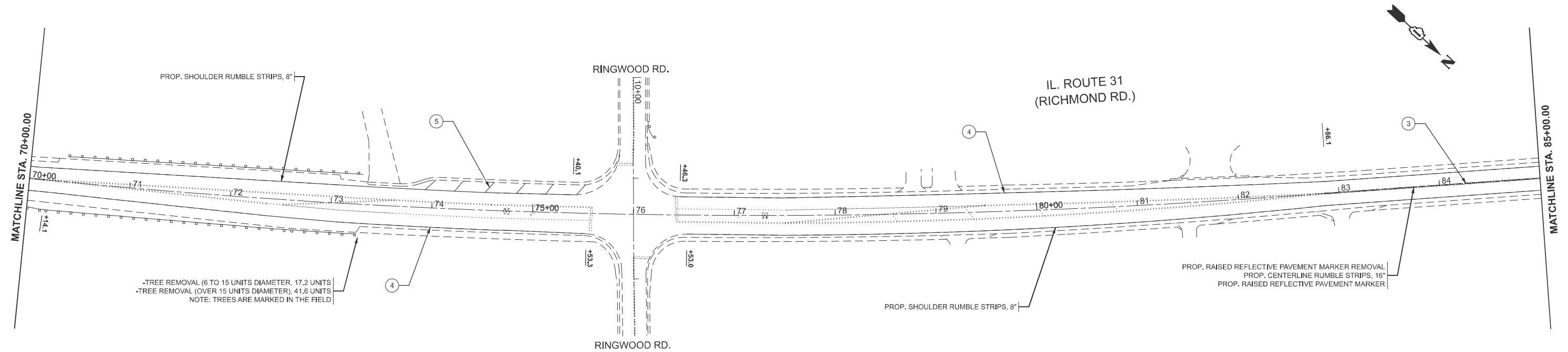
MODEL: IL 31 - RdwyPlan01 [Sheet]  
FILE NAME: c:\p\work\pwtok\kabr\0930992\102125-sh1-plan.dgn

	USER NAME = Rana.Kalo	DESIGNED - BBB	REVISED - RV1	STATE OF ILLINOIS DEPARTMENT OF TRANSPORTATION	ROADWAY AND PAVEMENT MARKING PLAN IL ROUTE 31 (RICHMOND ROAD) - U.S. ROUTE 12 TO PIONEER ROAD			F.A.P RTE.	SECTION	COUNTY	TOTAL SHEETS	SHEET NO.
		DRAWN - CCC	REVISED - RV2					336	2024-1002-N	MCHENRY	21	7
		CHECKED - AAA	REVISED - RV3		CONTRACT NO. 62X36							
	PLOT DATE = 1/9/2025	DATE - XX/XX/XX	REVISED - RV4		SCALE: 1"=50'	SHEET 1	OF 10 SHEETS	STA. 10+00.00	TO STA. 40+00.00	ILLINOIS FED. AID PROJECT		

MODEL: IL 31 - RdwyPlan03 [Sheet]  
FILE NAME: c:\pwworking\dot\kabr\m\0930992\102125-shr-clan.dgn



	USER NAME = Rana.Kalo		DESIGNED - BBB	REVISED - RV1	STATE OF ILLINOIS DEPARTMENT OF TRANSPORTATION	ROADWAY AND PAVEMENT MARKING PLAN			F.A.P RTE.	SECTION	COUNTY	TOTAL SHEETS	SHEET NO.
			DRAWN - CCC	REVISED - RV2		IL ROUTE 31 (RICHMOND ROAD) - U.S. ROUTE 12 TO PIONEER ROAD			336	2024-1002-N	MCHENRY	21	8
			CHECKED - AAA	REVISED - RV3					CONTRACT NO. 62X36				
	PLOT DATE = 1/9/2025		DATE - XX/XX/XX	REVISED - RV4		SCALE: 1"=50'	SHEET 2	OF 10 SHEETS	STA. 40+00.00	TO STA. 70+00.00	ILLINOIS FED. AID PROJECT		



USER NAME = Rana,Kalo	DESIGNED -	REVISED -
	DRAWN -	REVISED -
	CHECKED -	REVISED -
PLOT DATE = 1/9/2025	DATE -	REVISED -

**STATE OF ILLINOIS**  
**DEPARTMENT OF TRANSPORTATION**

## ROADWAY AND PAVEMENT MARKING PLAN

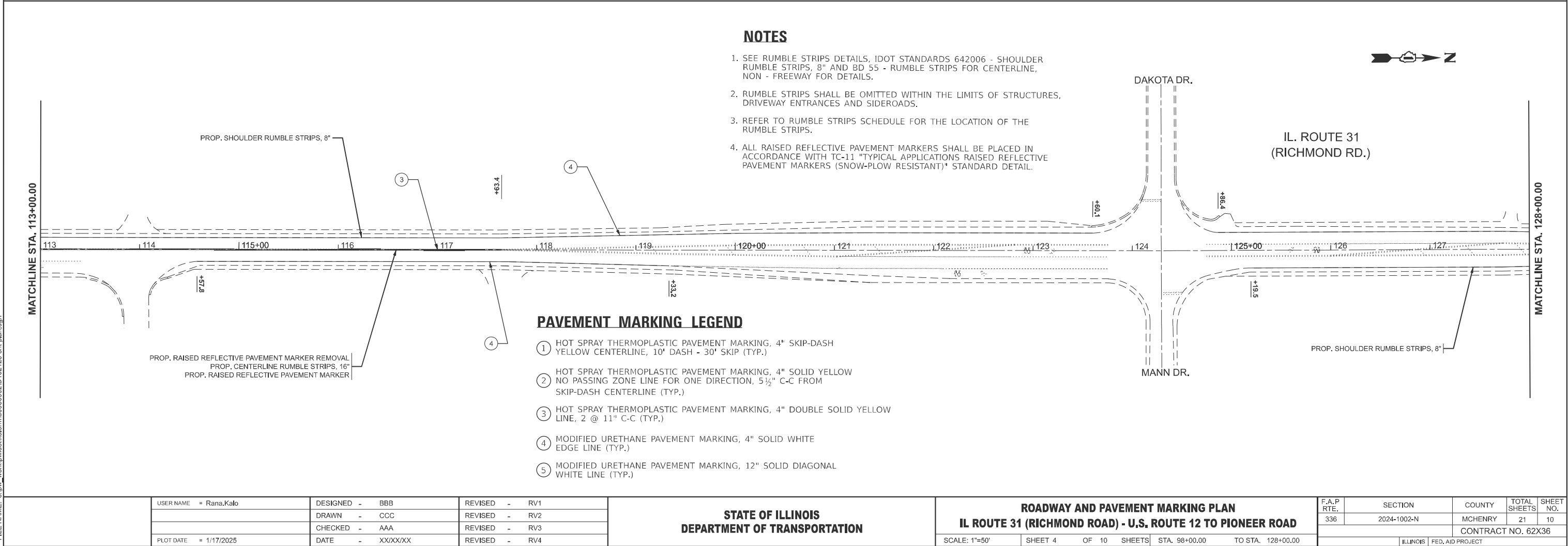
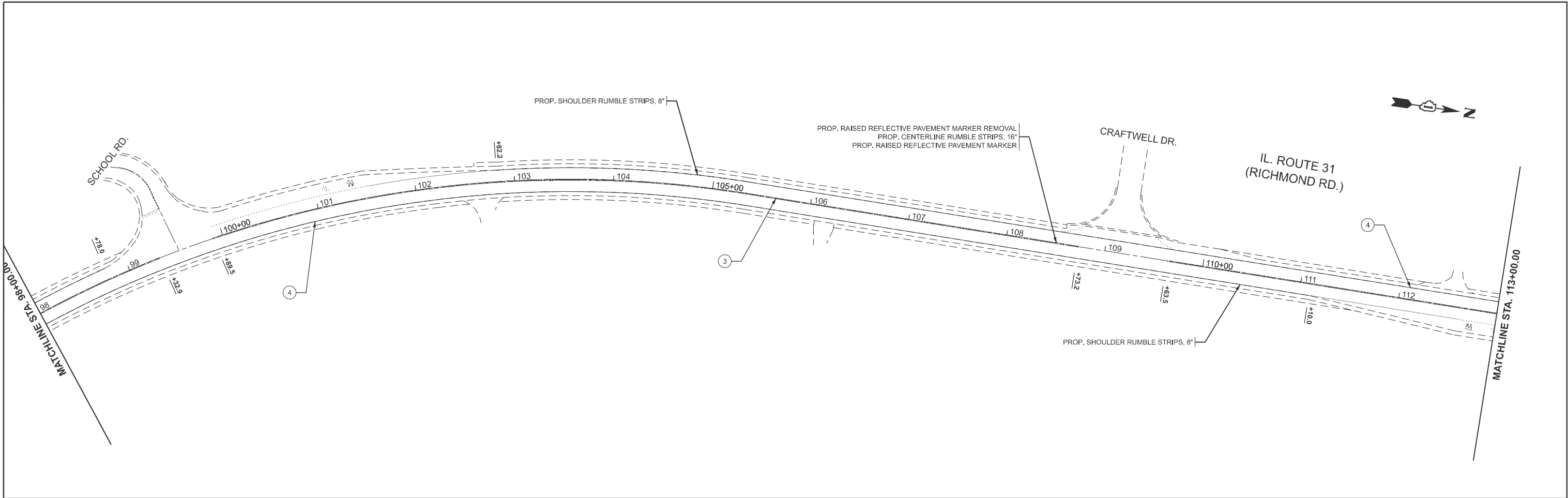
### IL ROUTE 31 (RICHMOND ROAD) - U.S. ROUTE 12 TO PIONEER ROAD

SCALE: 1"=50'	SHEET 3	OF 10	SHEETS	STA. 70+00.00	TO STA. 98+00.00
---------------	---------	-------	--------	---------------	------------------

F.A.P RTE.	SECTION	COUNTY	TOTAL SHEETS	SHEET NO.
336	2024-1002-N	MCHENRY	21	9
		CONTRACT NO. 62X36		
ILLINOIS		FED. AID PROJECT		

MODEL: IL31 - RdwyPlan05 [Sheet]  
FILE NAME: c:\pw work\pwidot\kalorm\d0930992\102125-sht-plan.dgn





MODEL: IL 31 - RdwyPlan07 (Sheet)  
FILE NAME: c:\pwworking\dotcom\0930992\102125-shr-plan.dgn

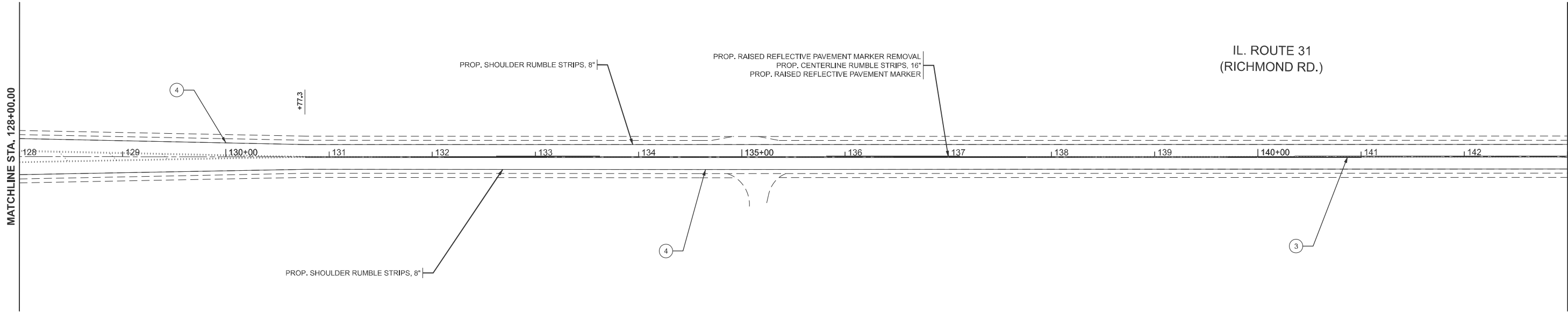
	USER NAME	= Rana.Kalo	DESIGNED -	BBB	REVISED -	RV1
	DRAWN -	CCC	REVISED -	RV2		
	CHECKED -	AAA	REVISED -	RV3		
	PLOT DATE	= 1/17/2025	DATE -	XX/XX/XX	REVISED -	RV4

STATE OF ILLINOIS  
DEPARTMENT OF TRANSPORTATION

ROADWAY AND PAVEMENT MARKING PLAN			
IL ROUTE 31 (RICHMOND ROAD) - U.S. ROUTE 12 TO PIONEER ROAD			
SCALE: 1"=50'	SHEET 4	OF 10 SHEETS	STA. 98+00.00 TO STA. 128+00.00

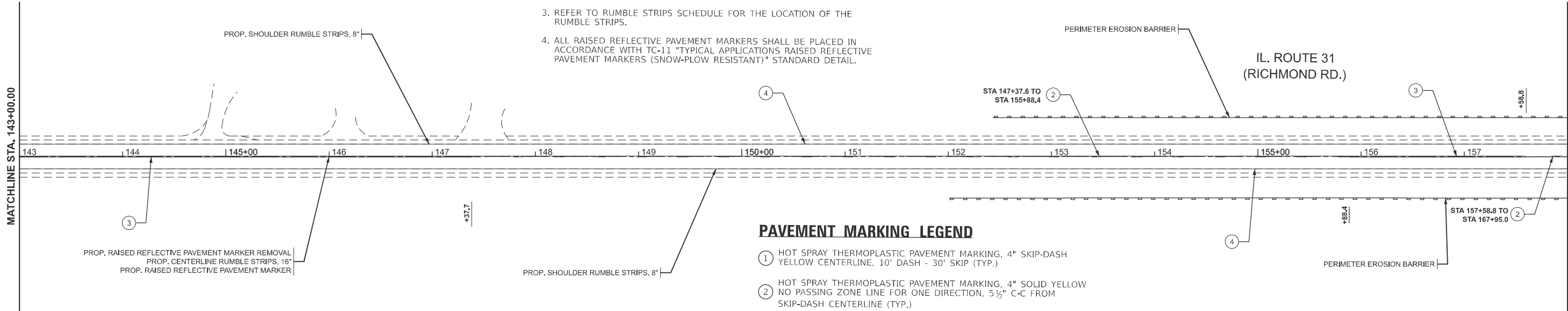
F.A.P. RTE.	SECTION	COUNTY	TOTAL SHEETS	SHEET NO.
336	2024-1002-N	MCHENRY	21	10
CONTRACT NO. 62X36				
ILLINOIS		FED. AID PROJECT		

MODEL: IL 31 - RdwyPlan09 [Sheet]  
FILE NAME: c:\pwworking\dotorkalor\dot0930992\10125-shr-plan.dgn



NOTES

1. SEE RUMBLE STRIPS DETAILS, IDOT STANDARDS 642006 - SHOULDER RUMBLE STRIPS, 8" AND BD 55 - RUMBLE STRIPS FOR CENTERLINE, NON - FREEWAY FOR DETAILS.
2. RUMBLE STRIPS SHALL BE OMITTED WITHIN THE LIMITS OF STRUCTURES, DRIVEWAY ENTRANCES AND SIDEROADS.
3. REFER TO RUMBLE STRIPS SCHEDULE FOR THE LOCATION OF THE RUMBLE STRIPS.
4. ALL RAISED REFLECTIVE PAVEMENT MARKERS SHALL BE PLACED IN ACCORDANCE WITH TC-11 "TYPICAL APPLICATIONS RAISED REFLECTIVE PAVEMENT MARKERS (SNOW-PLOW RESISTANT)" STANDARD DETAIL.

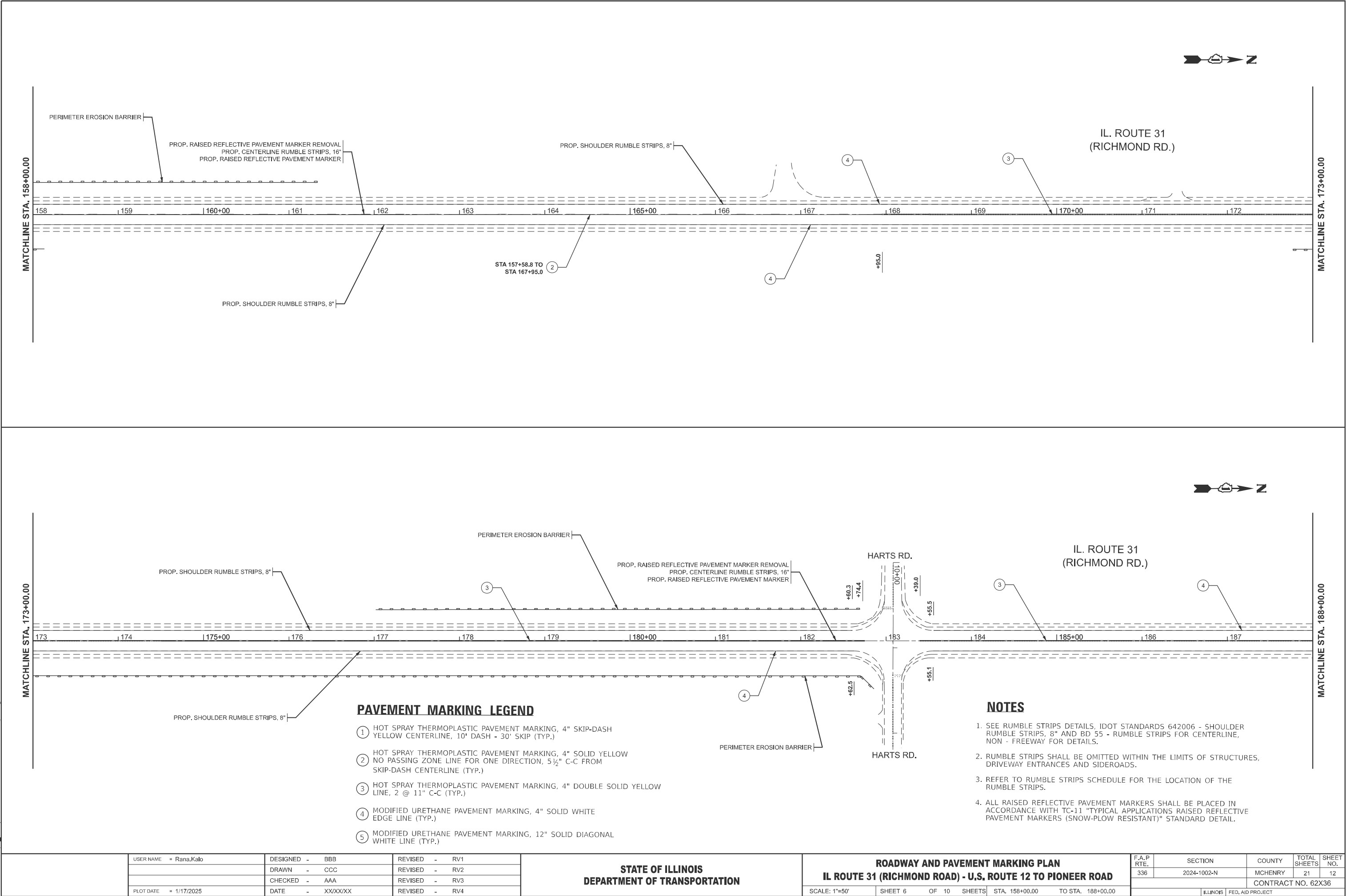


PAVEMENT MARKING LEGEND

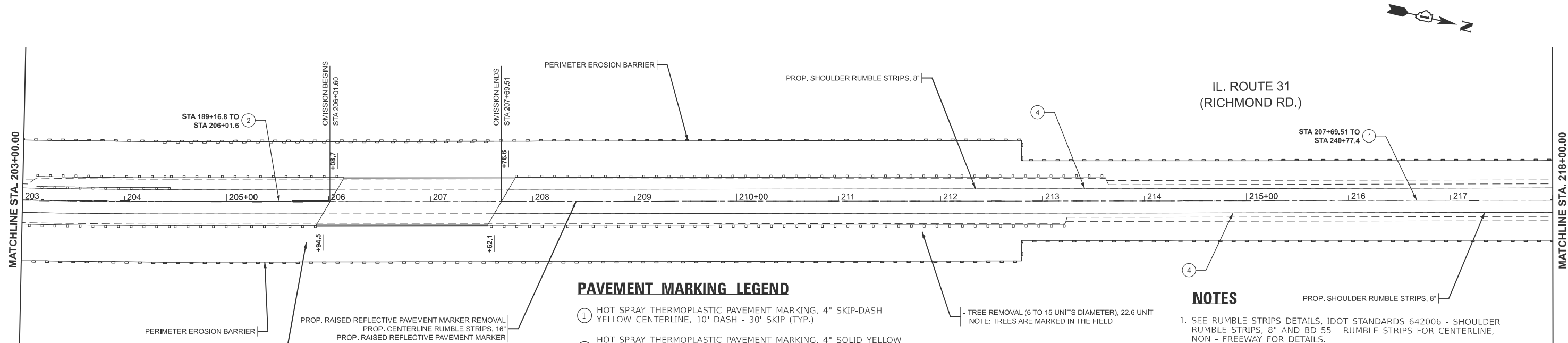
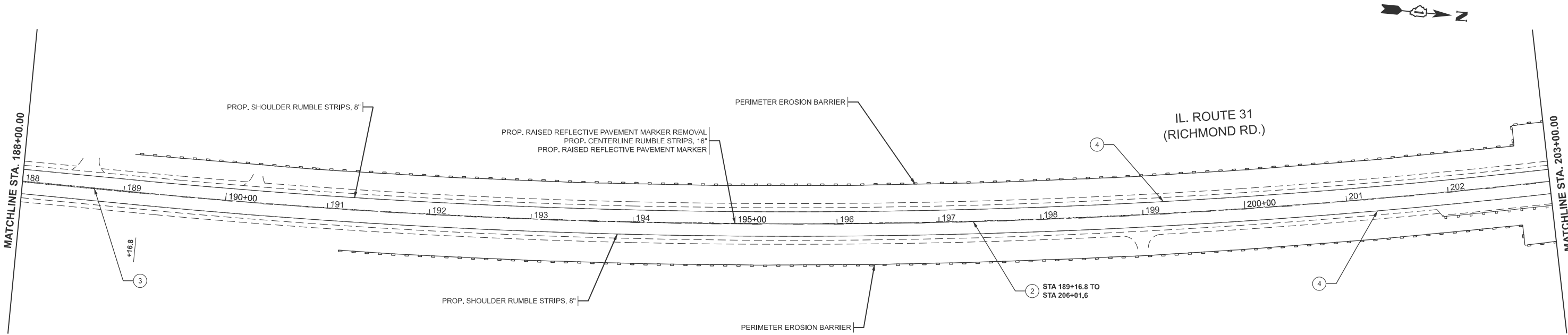
- ① HOT SPRAY THERMOPLASTIC PAVEMENT MARKING, 4" SKIP-DASH YELLOW CENTERLINE, 10' DASH - 30' SKIP (TYP.)
- ② HOT SPRAY THERMOPLASTIC PAVEMENT MARKING, 4" SOLID YELLOW NO PASSING ZONE LINE FOR ONE DIRECTION, 5½" C-C FROM SKIP-DASH CENTERLINE (TYP.)
- ③ HOT SPRAY THERMOPLASTIC PAVEMENT MARKING, 4" DOUBLE SOLID YELLOW LINE, 2 @ 11" C-C (TYP.)
- ④ MODIFIED URETHANE PAVEMENT MARKING, 4" SOLID WHITE EDGE LINE (TYP.)
- ⑤ MODIFIED URETHANE PAVEMENT MARKING, 12" SOLID DIAGONAL WHITE LINE (TYP.)

	USER NAME = Rana.Kalo	DESIGNED - BBB	REVISED - RV1	STATE OF ILLINOIS DEPARTMENT OF TRANSPORTATION	ROADWAY AND PAVEMENT MARKING PLAN IL ROUTE 31 (RICHMOND ROAD) - U.S. ROUTE 12 TO PIONEER ROAD			F.A.P RTE.	SECTION	COUNTY	TOTAL SHEETS	SHEET NO.
		DRAWN - CCC	REVISED - RV2					336	2024-1002-N	MCHENRY	21	11
		CHECKED - AAA	REVISED - RV3		CONTRACT NO. 62X36							
	PLOT DATE = 1/17/2025	DATE - XX/XX/XX	REVISED - RV4		SCALE: 1"=50'	SHEET 5	OF 10 SHEETS	STA. 128+00.00	TO STA. 158+00.00	ILLINOIS FED. AID PROJECT		

MODEL: IL 31 - RdwyPlan11 [Sheet]  
FILE NAME: c:\pwworking\dot\kalo\m\0930992\102125-sh1-plan.dgn



MODEL: IL 31 - RdwyPlan13 (Sheet)  
FILE NAME: c:\pwworking\illinois\0930992\102125-sh1-plan.dgn



#### PAVEMENT MARKING LEGEND

- 1 HOT SPRAY THERMOPLASTIC PAVEMENT MARKING, 4" SKIP-DASH YELLOW CENTERLINE, 10' DASH - 30' SKIP (TYP.)
- 2 HOT SPRAY THERMOPLASTIC PAVEMENT MARKING, 4" SOLID YELLOW NO PASSING ZONE LINE FOR ONE DIRECTION, 5 1/2" C-C FROM SKIP-DASH CENTERLINE (TYP.)
- 3 HOT SPRAY THERMOPLASTIC PAVEMENT MARKING, 4" DOUBLE SOLID YELLOW LINE, 2 @ 11" C-C (TYP.)
- 4 MODIFIED URETHANE PAVEMENT MARKING, 4" SOLID WHITE EDGE LINE (TYP.)
- 5 MODIFIED URETHANE PAVEMENT MARKING, 12" SOLID DIAGONAL WHITE LINE (TYP.)

#### NOTES

1. SEE RUMBLE STRIPS DETAILS, IDOT STANDARDS 642006 - SHOULDER RUMBLE STRIPS, 8" AND BD 55 - RUMBLE STRIPS FOR CENTERLINE, NON - FREEWAY FOR DETAILS.
2. RUMBLE STRIPS SHALL BE OMITTED WITHIN THE LIMITS OF STRUCTURES, DRIVEWAY ENTRANCES AND SIDEROADS.
3. REFER TO RUMBLE STRIPS SCHEDULE FOR THE LOCATION OF THE RUMBLE STRIPS.
4. ALL RAISED REFLECTIVE PAVEMENT MARKERS SHALL BE PLACED IN ACCORDANCE WITH TC-11 "TYPICAL APPLICATIONS RAISED REFLECTIVE PAVEMENT MARKERS (SNOW-PLOW RESISTANT)" STANDARD DETAIL.

	USER NAME	= Rana.Kalo	DESIGNED -	BBB	REVISED -	RV1
	DRAWN	- CCC	REVISED -	RV2		
	CHECKED	- AAA	REVISED -	RV3		
	PLOT DATE	= 1/17/2025	DATE	- XX/XX/XX	REVISED -	RV4

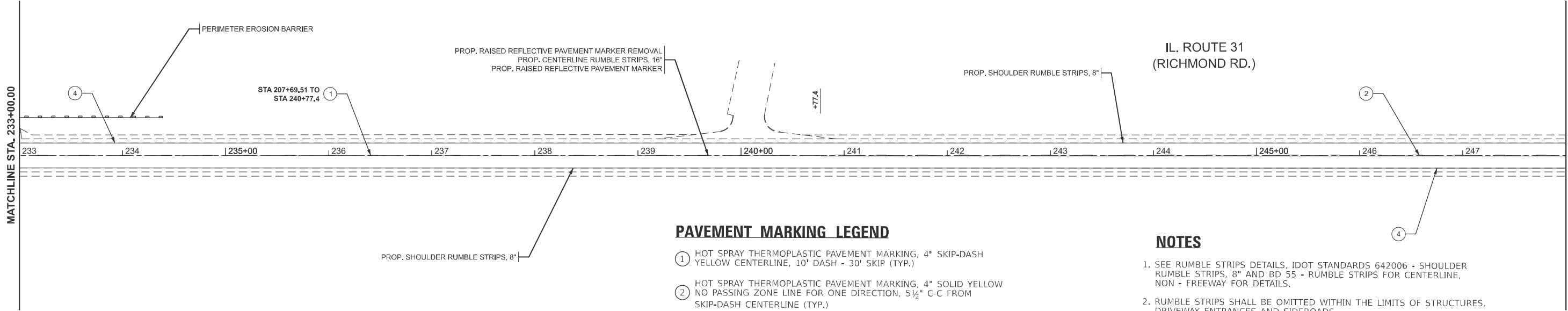
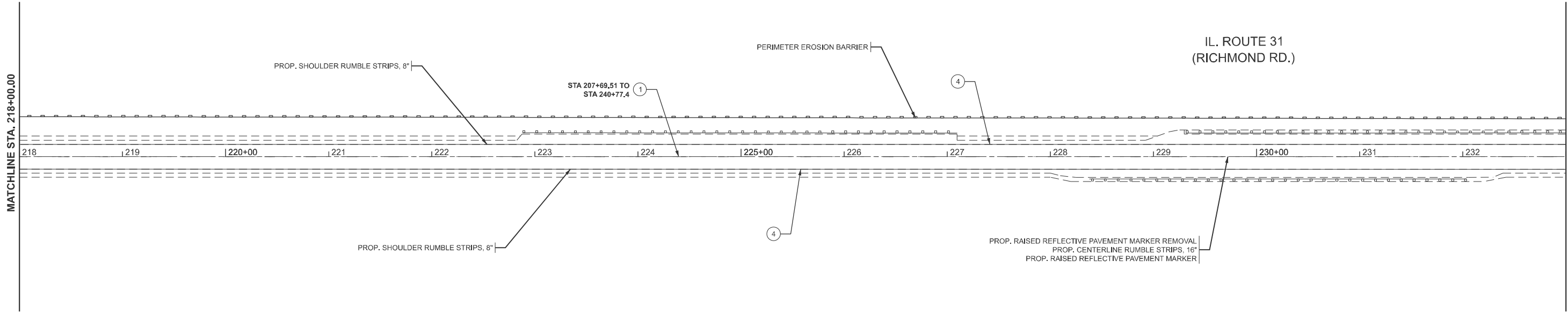
STATE OF ILLINOIS  
DEPARTMENT OF TRANSPORTATION

ROADWAY AND PAVEMENT MARKING PLAN  
IL ROUTE 31 (RICHMOND ROAD) - U.S. ROATE 12 TO PIONEER ROAD

SCALE: 1"=50' SHEET 7 OF 10 SHEETS STA. 188+00.00 TO STA. 218+00.00

F.A.P RTE.	SECTION	COUNTY	TOTAL SHEETS	SHEET NO.
336	2024-1002-N	MCHENRY	21	13
CONTRACT NO. 62X36				
ILLINOIS FED. AID PROJECT				

MODEL: IL 31 - RdwyPlan15 (Sheet)  
FILE NAME: c:\pwworking\dotcom\0930992\102125-sh1-plan.dgn



PAVEMENT MARKING LEGEND

- ① HOT SPRAY THERMOPLASTIC PAVEMENT MARKING, 4" SKIP-DASH YELLOW CENTERLINE, 10' DASH - 30' SKIP (TYP.)
- ② HOT SPRAY THERMOPLASTIC PAVEMENT MARKING, 4" SOLID YELLOW NO PASSING ZONE LINE FOR ONE DIRECTION, 5½" C-C FROM SKIP-DASH CENTERLINE (TYP.)
- ③ HOT SPRAY THERMOPLASTIC PAVEMENT MARKING, 4" DOUBLE SOLID YELLOW LINE, 2 @ 11" C-C (TYP.)
- ④ MODIFIED URETHANE PAVEMENT MARKING, 4" SOLID WHITE EDGE LINE (TYP.)
- ⑤ MODIFIED URETHANE PAVEMENT MARKING, 12" SOLID DIAGONAL WHITE LINE (TYP.)

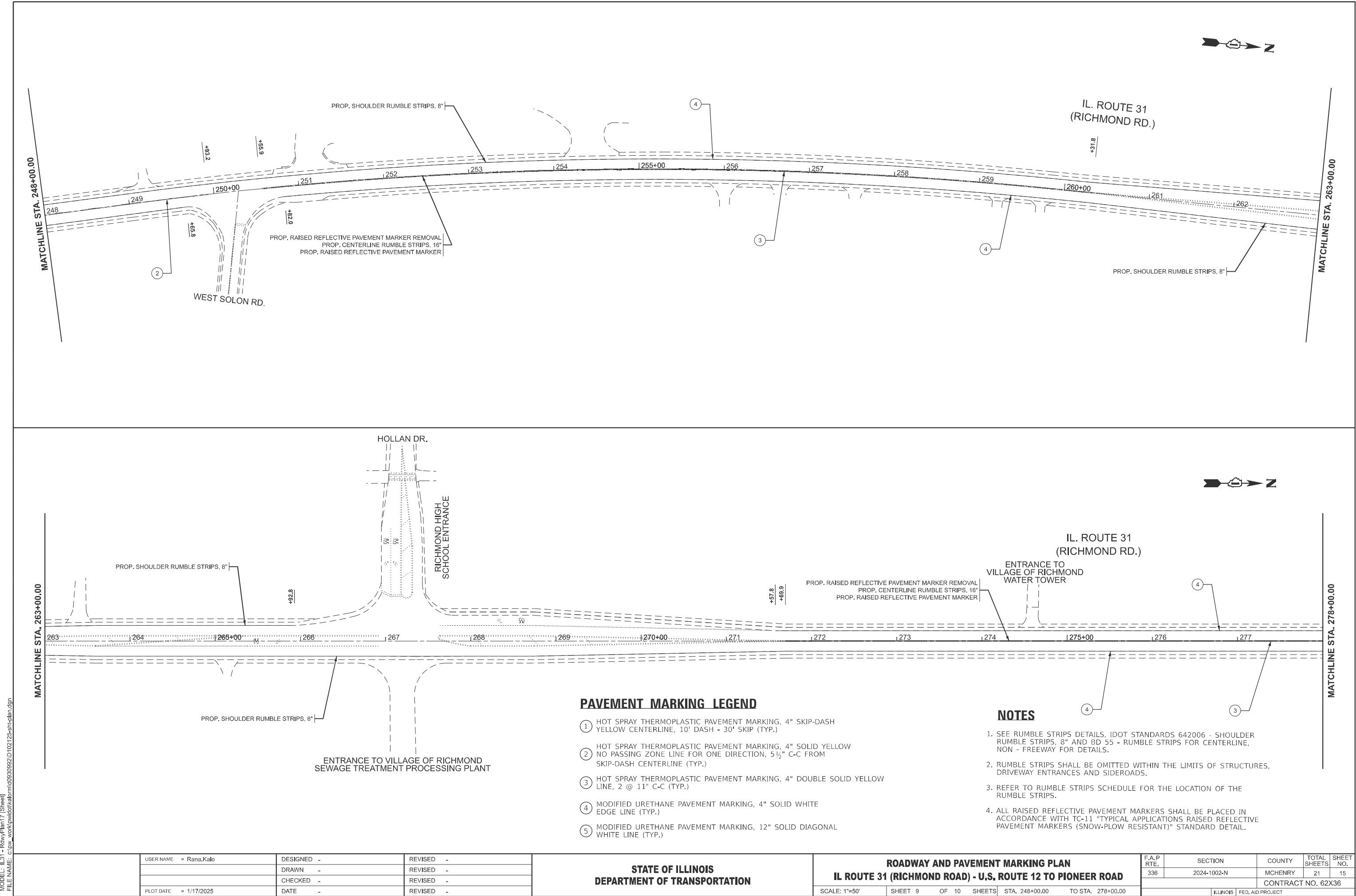
NOTES

- 1. SEE RUMBLE STRIPS DETAILS, IDOT STANDARDS 642006 - SHOULDER RUMBLE STRIPS, 8" AND BD 55 - RUMBLE STRIPS FOR CENTERLINE, NON - FREEWAY FOR DETAILS.
- 2. RUMBLE STRIPS SHALL BE OMITTED WITHIN THE LIMITS OF STRUCTURES, DRIVEWAY ENTRANCES AND SIDEROADS.
- 3. REFER TO RUMBLE STRIPS SCHEDULE FOR THE LOCATION OF THE RUMBLE STRIPS.
- 4. ALL RAISED REFLECTIVE PAVEMENT MARKERS SHALL BE PLACED IN ACCORDANCE WITH TC-11 "TYPICAL APPLICATIONS RAISED REFLECTIVE PAVEMENT MARKERS (SNOW-PLOW RESISTANT)" STANDARD DETAIL.

	USER NAME = Rana.Kalo		DESIGNED - BBB	REVISED - RV1	STATE OF ILLINOIS DEPARTMENT OF TRANSPORTATION	ROADWAY AND PAVEMENT MARKING PLAN			F.A.P RTE.	SECTION	COUNTY	TOTAL SHEETS	SHEET NO.
			DRAWN - CCC	REVISED - RV2		IL ROUTE 31 (RICHMOND ROAD) - U.S. ROUTE 12 TO PIONEER ROAD			336	2024-1002-N	MCHENRY	21	14
			CHECKED - AAA	REVISED - RV3					CONTRACT NO. 62X36				
	PLOT DATE = 1/17/2025		DATE - XX/XX/XX	REVISED - RV4		SCALE: 1"=50'	SHEET 8	OF 10 SHEETS	STA. 218+00.00	TO STA. 248+00.00	ILLINOIS FED. AID PROJECT		

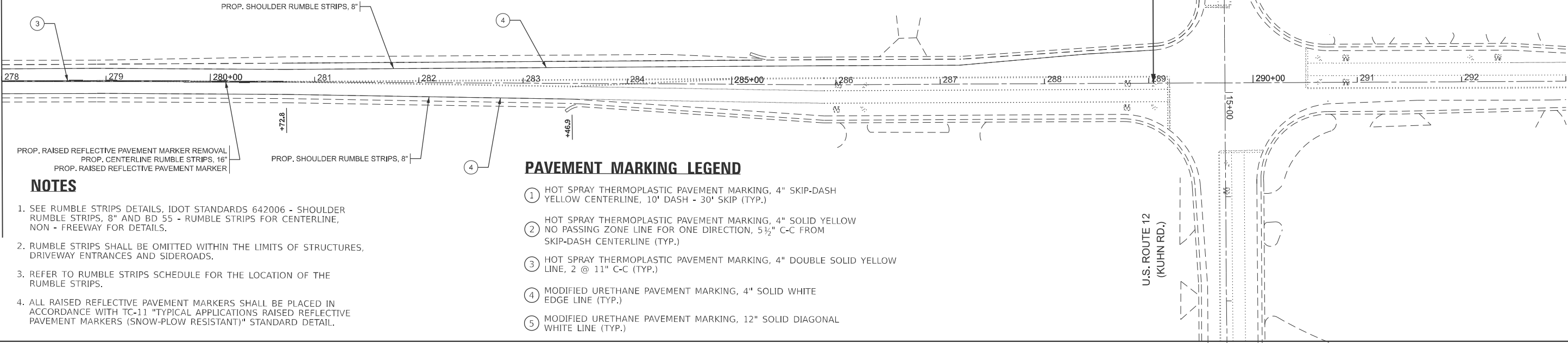


MODEL: IL 31 - RdwyPlan17 (Sheet)  
FILE NAME: c:\pwworking\dot\kabr\m\0930992\102125-sh1-e-plan.dgn



MODEL: IL 31 - RdwyPlan19 [Sheet]  
FILE NAME: c:\p\work\pilot\kalo\m\0930992\102125-sh1-plan.dgn

MATCHLINE STA. 278+00.00



NOTES

- SEE RUMBLE STRIPS DETAILS, IDOT STANDARDS 642006 - SHOULDER RUMBLE STRIPS, 8" AND BD 55 - RUMBLE STRIPS FOR CENTERLINE, NON - FREEWAY FOR DETAILS.
- RUMBLE STRIPS SHALL BE OMITTED WITHIN THE LIMITS OF STRUCTURES, DRIVEWAY ENTRANCES AND SIDEROADS.
- REFER TO RUMBLE STRIPS SCHEDULE FOR THE LOCATION OF THE RUMBLE STRIPS.
- ALL RAISED REFLECTIVE PAVEMENT MARKERS SHALL BE PLACED IN ACCORDANCE WITH TC-11 "TYPICAL APPLICATIONS RAISED REFLECTIVE PAVEMENT MARKERS (SNOW-PLOW RESISTANT)" STANDARD DETAIL.

PAVEMENT MARKING LEGEND

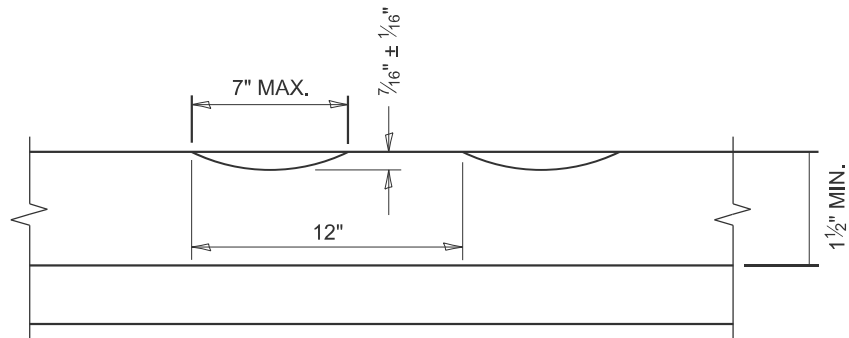
- HOT SPRAY THERMOPLASTIC PAVEMENT MARKING, 4" SKIP-DASH YELLOW CENTERLINE, 10' DASH - 30' SKIP (TYP.)
- HOT SPRAY THERMOPLASTIC PAVEMENT MARKING, 4" SOLID YELLOW NO PASSING ZONE LINE FOR ONE DIRECTION, 5½" C-C FROM SKIP-DASH CENTERLINE (TYP.)
- HOT SPRAY THERMOPLASTIC PAVEMENT MARKING, 4" DOUBLE SOLID YELLOW LINE, 2 @ 11" C-C (TYP.)
- MODIFIED URETHANE PAVEMENT MARKING, 4" SOLID WHITE EDGE LINE (TYP.)
- MODIFIED URETHANE PAVEMENT MARKING, 12" SOLID DIAGONAL WHITE LINE (TYP.)

STATE OF ILLINOIS  
DEPARTMENT OF TRANSPORTATION

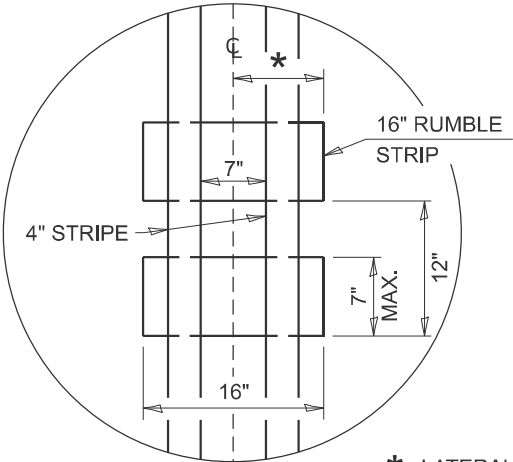
ROADWAY AND PAVEMENT MARKING PLAN  
IL ROUTE 31 (RICHMOND ROAD) - U.S. ROUTE 12 TO PIONEER ROAD

SCALE: 1"=50' SHEET 10 OF 10 SHEETS STA. 278+00.00 TO STA. 293+00.00

F.A.P RTE.	SECTION	COUNTY	TOTAL SHEETS	SHEET NO.
336	2024-1002-N	MCHENRY	21	16
CONTRACT NO. 62X36				
ILLINOIS FED. AID PROJECT				



SECTION A-A



\* LATERAL DEVIATION SHALL NOT EXCEED ONE INCH IN 100 FEET.

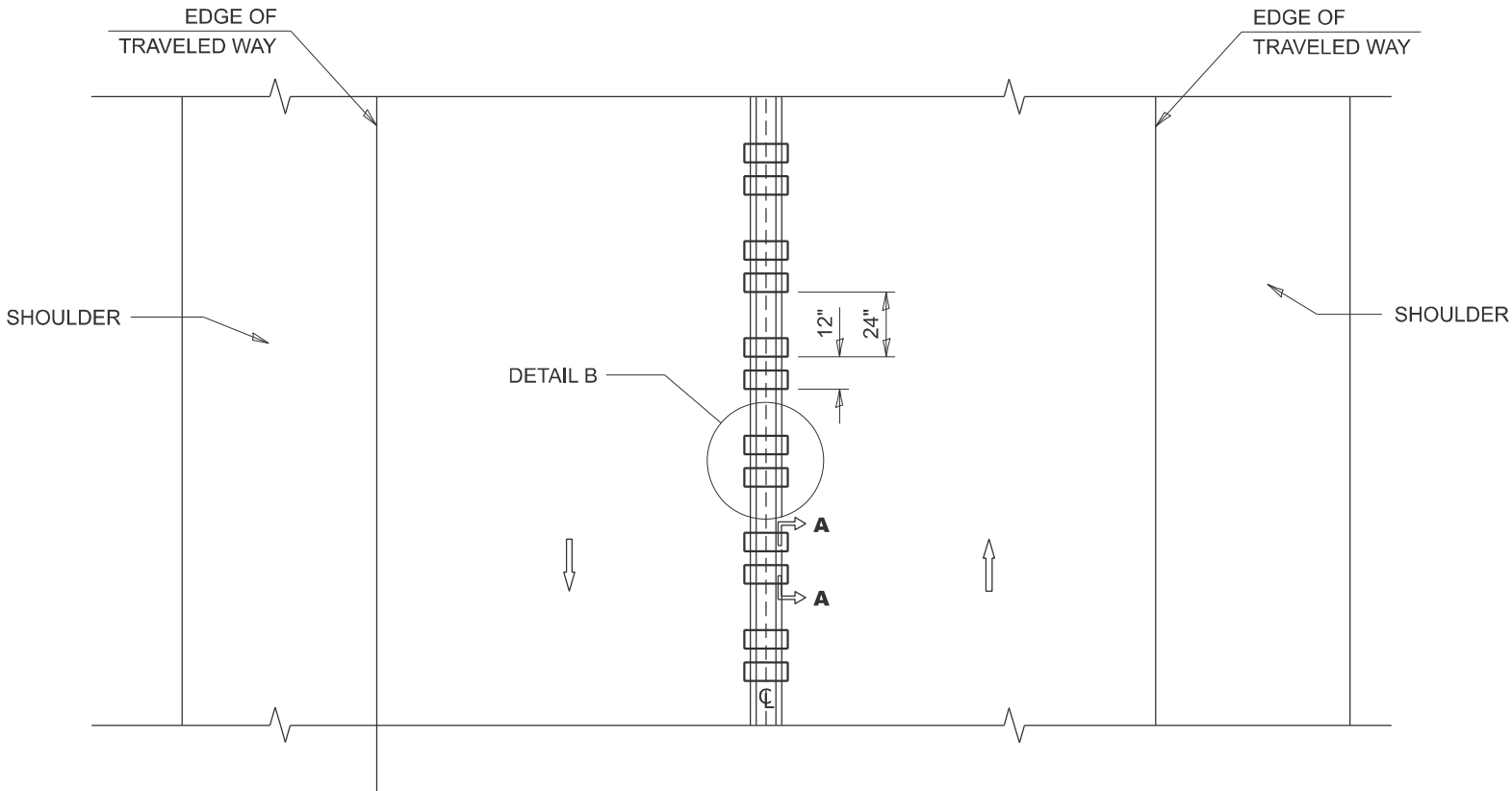
DETAIL B

GENERAL NOTES

- CENTERLINE RUMBLE STRIPS SHALL BE CONSTRUCTED ACCORDING TO SECTION 642 ALONG THE CENTERLINE OF PAVEMENT.
- SEE STANDARD 780001 FOR OTHER STRIPING LAYOUTS.
- RUMBLE STRIPS SHALL NOT BE PLACED ON BRIDGES.
- ALL RUMBLE STRIPS SHALL BE MILLED.
- CENTERLINE RUMBLE STRIPS SHALL BE CONTINUOUS THROUGH CONNECTIONS OF SIDEROADS WITH NO LEFT TURN LANES.
- DISCONTINUE CENTERLINE RUMBLE STRIPS THROUGH THE LIMITS OF ALL LEFT TURN LANES, INCLUDING ANY LANE TAPER SECTIONS.
- AFTER RUMBLE STRIPS ARE INSTALLED, THE PAVEMENT SURFACE SHALL BE SWEEPED CLEAN PRIOR TO THE PLACEMENT OF THE NEW PAVEMENT MARKINGS.
- WHERE USED, ADJUST SPACING OF RAISED REFLECTIVE PAVEMENT MARKERS TO FALL IN WIDER GAP BETWEEN RUMBLE STRIPS.

BASIS OF PAYMENT

- THIS WORK WILL BE PAID FOR AT THE CONTRACT UNIT PRICE PER FOOT FOR CENTERLINE-RUMBLE STRIP OF THE WIDTH SPECIFIED.
- HOT-SPRAY THERMOPLASTIC PAVEMENT MARKING WILL BE USED OVER THE RUMBLE STRIPS, AND WILL BE PAID FOR SEPARATELY.



TWO-WAY ROAD

MODEL: BD-55 (Sheet)  
FILE NAME: c:\p\work\p\work\kalo\m\0930992\102125-shr-dist\stds.dgn

USER NAME = Rana.Kalo	DESIGNED - R. BORO	REVISED - K. SMITH 11-18-22
	DRAWN -	REVISED -
	CHECKED -	REVISED -
PLOT DATE = 11/7/2024	DATE - 08-06-2012	REVISED -

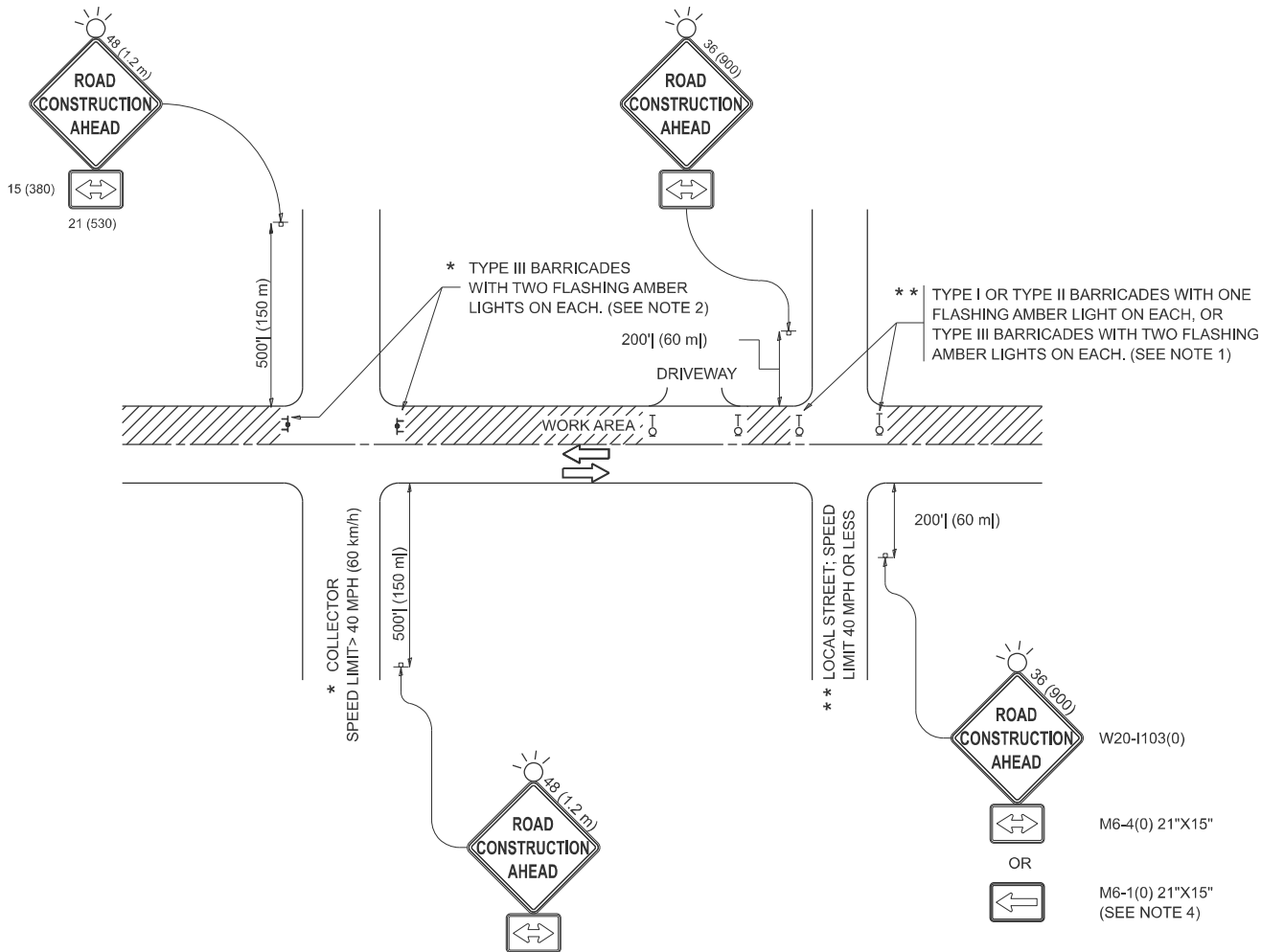
STATE OF ILLINOIS  
DEPARTMENT OF TRANSPORTATION

RUMBLE STRIPS FOR CENTERLINE, NON-FREEWAY

SCALE: NONE SHEET 1 OF 1 SHEETS STA. TO STA.

F.A.P RTE.	SECTION	COUNTY	TOTAL SHEETS	SHEET NO.
336	2024-1002-N	MCHENRY	21	17
BD 55		CONTRACT NO. 62X36		
ILLINOIS		FED. AID PROJECT		

MODEL: TC-10 (Sheet)  
FILE NAME: c:\p\work\wikidok\alor\0930992\102125-sh1-DistStd.sgm

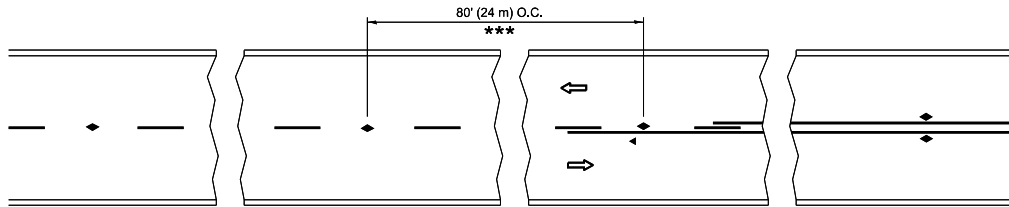


NOTES:

- SIDE ROAD WITH A SPEED LIMIT OF 40 MPH (60 km/h) OR LESS AS SHOWN ON THE DRAWING AND AS DIRECTED BY THE ENGINEER:
  - ONE "ROAD CONSTRUCTION AHEAD" SIGN 36 x 36 (900x900) WITH A FLASHER MOUNTED ON IT APPROXIMATELY 200' (60 m) IN ADVANCE OF THE MAIN ROUTE.
  - THE CLOSED PORTION OF THE MAIN ROUTE SHALL BE PROTECTED BY BLOCKING WITH TYPE I, TYPE II OR TYPE III BARRICADES, 1/3 OF THE CROSS SECTION OF THE CLOSED PORTION.
- SIDE ROAD WITH A SPEED LIMIT GREATER THAN 40 MPH (60 km/h) AS SHOWN ON THE DRAWING AND AS DIRECTED BY THE ENGINEER:
  - ONE "ROAD CONSTRUCTION AHEAD" SIGN 48 x 48 (1.2 m x 1.2 m) WITH A FLASHER MOUNTED ON IT APPROXIMATELY 500' (150 m) IN ADVANCE OF THE MAIN ROUTE.
  - THE CLOSED PORTION OF THE MAIN ROUTE SHALL BE PROTECTED BY BLOCKING WITH TYPE III BARRICADES, 1/2 OF THE CROSS SECTION OF THE CLOSED PORTION.
- CONES MAY BE SUBSTITUTED FOR BARRICADES OR DRUMS AT HALF THE SPACING DURING DAY OPERATIONS. CONES SHALL BE A MINIMUM OF 28 (710) IN HEIGHT.
- WHEN THE SIDE ROAD LIES BETWEEN THE BEGINNING OF THE MAINLINE SIGNING AND THE WORK ZONE, A SINGLE HEADED ARROW (M6-1) SHALL BE USED IN LIEU OF THE DOUBLE HEADED ARROW (M6-4).
- WHEN WORK IS BEING PERFORMED ON A SIDE ROAD OR DRIVEWAY, FOLLOW THE APPLICABLE STANDARD(S). THE DIRECTIONAL ARROW (M6-1 OR M6-4) SHALL BE COVERED OR REMOVED WHEN NO LONGER CONSISTENT WITH THE TRAFFIC CONTROL SET-UP.
- ADVANCE WARNING SIGNS ARE TO BE OMITTED ON DRIVEWAYS UNLESS OTHERWISE SPECIFIED IN THE PLANS OR BY THE ENGINEER.
- THE TRAFFIC CONTROL AND PROTECTION FOR SIDE ROADS, INTERSECTIONS, AND DRIVEWAYS SHALL BE INCLUDED IN THE COST OF SPECIFIED TRAFFIC CONTROL STANDARDS OR ITEMS.

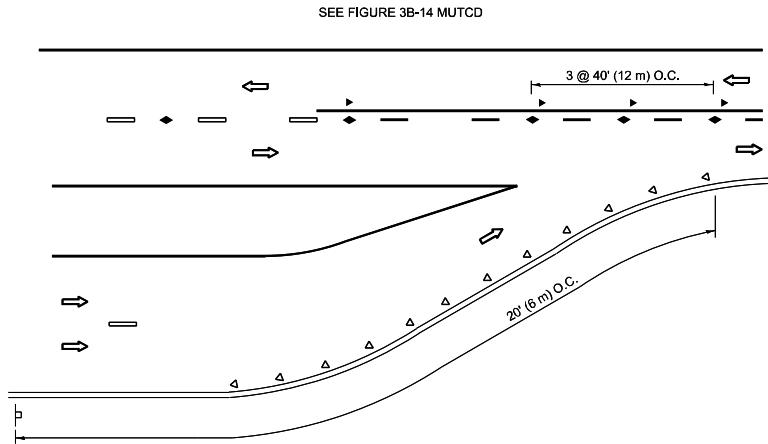
All dimensions are in inches (millimeters)  
unless otherwise shown.

	USER NAME	= Rana.Kalo	DESIGNED	-	L.H.A.	REVISED	-	T. RAMMACHER 01-06-00	STATE OF ILLINOIS DEPARTMENT OF TRANSPORTATION	TRAFFIC CONTROL AND PROTECTION FOR SIDE ROADS, INTERSECTIONS, AND DRIVEWAYS				F.A.P RTE.	SECTION		COUNTY	TOTAL SHEETS	SHEET NO.
			DRAWN	-		REVISED	-	A. SCHUETZE 07-01-13						336	2024-1002-N		MCHENRY	21	18
			CHECKED	-		REVISED	-	A. SCHUETZE 09-15-06						TC-10		CONTRACT NO. 62X36			
	PLOT DATE	= 11/7/2024	DATE	-	06-89	REVISED	-	D. SENDERAK 05-03-24						ILLINOIS		FED. AID PROJECT			
	SCALE:			SHEET 1			OF 1 SHEETS							STA.			TO STA.		

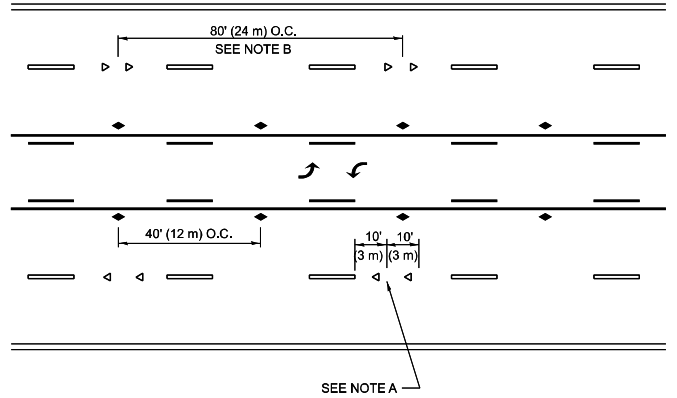


\*\*\* REDUCE TO 40' (12 m) O.C. ON CURVES WITH POSTED OR ADVISORY SPEED 45 M.P.H. (70 km/h) OR LESS.

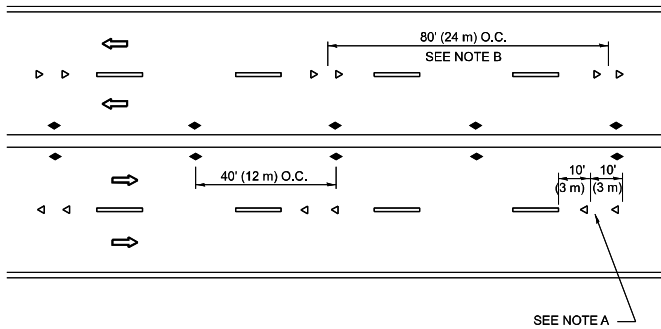
## TWO-LANE/TWO-WAY



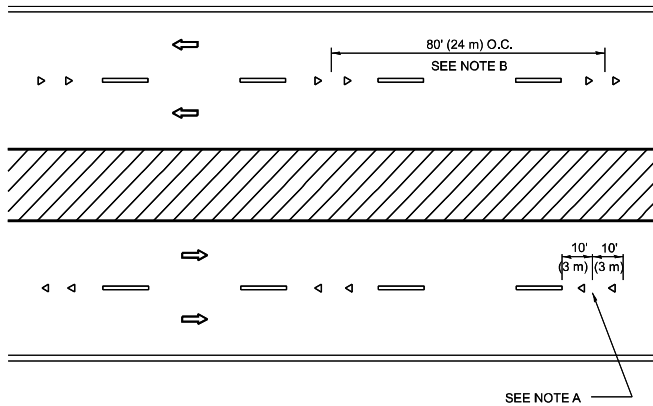
## LANE REDUCTION TRANSITION



## TWO-WAY LEFT TURN



## MULTI-LANE/UNDIVIDED



## MULTI-LANE/DIVIDED

## GENERAL NOTES

- MARKERS USED WITH DASHED LINES SHALL BE CENTERED IN THE GAP BETWEEN SEGMENTS.
- MARKERS USED ADJACENT TO SOLID LINES SHALL BE OFFSET 2 TO 3 (50 TO 75) TOWARD TRAFFIC AS SHOWN.
- MARKERS THROUGH TANGENTS LESS THAN 500' (150 m) IN LENGTH BETWEEN CURVES SHALL BE INSTALLED AT THE LESSER OF THE TWO CURVE SPACINGS.
- MARKERS ARE TO BE USED ADJACENT TO BOTH SOLID WHITE LINES IN DUAL LEFT TURN LANES

## SYMBOLS

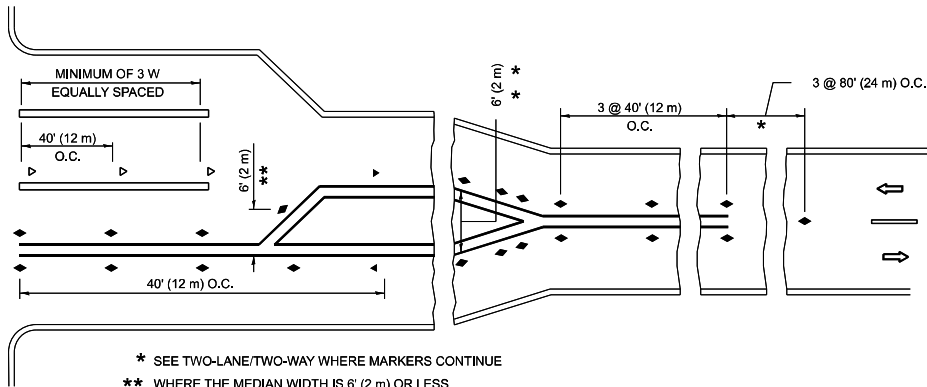
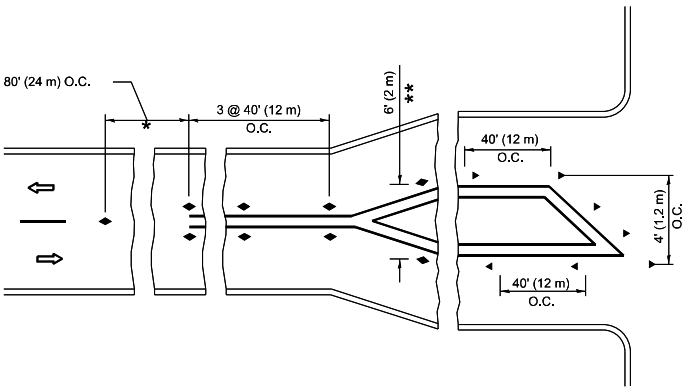
- YELLOW STRIPE
- WHITE STRIPE
- ONE-WAY AMBER MARKER
- ONE-WAY CRYSTAL MARKER (W/O)
- TWO-WAY AMBER MARKER

## LANE MARKER NOTES

- USE DOUBLE LANE LINE MARKERS SPACED AS SHOWN.
- REDUCE TO 40' (12 m) O.C. ON CURVES WHERE ADVISORY SPEEDS ARE 10 M.P.H (20 km/h) LOWER THAN POSTED SPEEDS.

## DESIGN NOTES

- DOUBLE LANE LINE MARKERS SHALL BE USED UNLESS SPECIFIED OTHERWISE.
- EXCEPT AS SHOWN ON THE LANE REDUCTION TRANSITION AND FREEWAY EXIT RAMP DETAIL, MARKERS ARE NOT TO BE SPECIFIED ON RIGHT EDGE LINES.
- THE EXACT MARKER LIMITS, SPACING, AND COLOR SHALL BE INCLUDED IN THE PLANS WHEN STANDARD SPECIFICATIONS ARE NOT BEING USED.
- MARKERS SHOULD NOT BE USED ALONGSIDE CURBS EXCEPT FOR EXTREMELY SHORT SECTIONS OF CURBS WHERE NOT MORE THAN TWO MARKERS WOULD BE INVOLVED.



## TURN LANES

All dimensions are in inches (millimeters) unless otherwise shown.

MODEL: Untitled [Sheet]  
FILE NAME: c:\p\work\pwork\kalor\0930992\102125-shr-dist\stds.dgn

USER NAME	= Rana.Kalo	DESIGNED	-
DRAWN	-	REVISED	- T. RAMMACHER 03-12-99
PLOT SCALE	= 0.16666633" / in.	REVISED	- T. RAMMACHER 01-06-00
PLOT DATE	= 11/7/2024	REVISED	- C. JUCIUS 09-09-09
DATE	-	REVISED	- C. JUCIUS 07-01-13

STATE OF ILLINOIS  
DEPARTMENT OF TRANSPORTATION

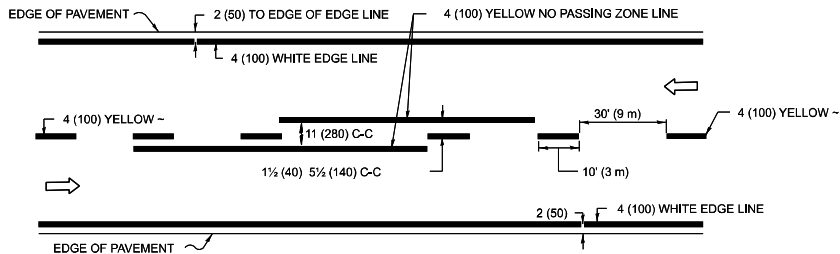
TYPICAL APPLICATIONS  
RAISED REFLECTIVE PAVEMENT MARKERS (SNOW-PLOW RESISTANT)

SCALE: NONE SHEET 1 OF 1 SHEETS STA. TO STA.

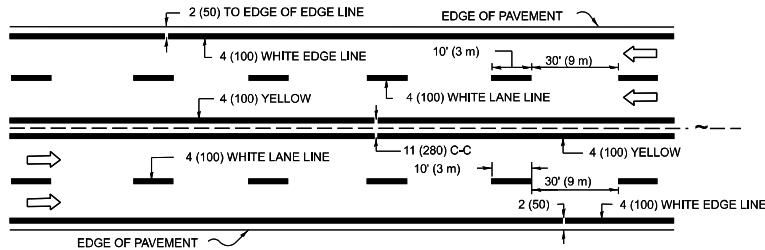
F.A.P. RTE.	SECTION	COUNTY	TOTAL SHEETS	SHEET NO.
336	2024-1002-N	MCHENRY	21	19
TC-11		CONTRACT NO. 62X36		
ILLINOIS		FED. AID PROJECT		



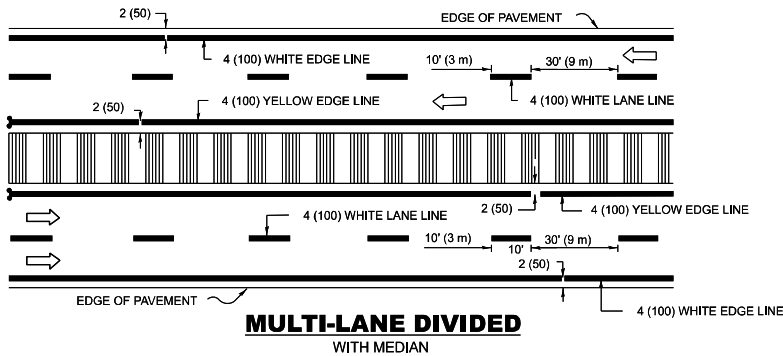
MODEL: Untitled-1 [Sheet]  
FILE NAME: c:\p\work\work\kabr\m\0030992\1012125-sh-TpDistStd.dgn



2-LANE ROADWAY

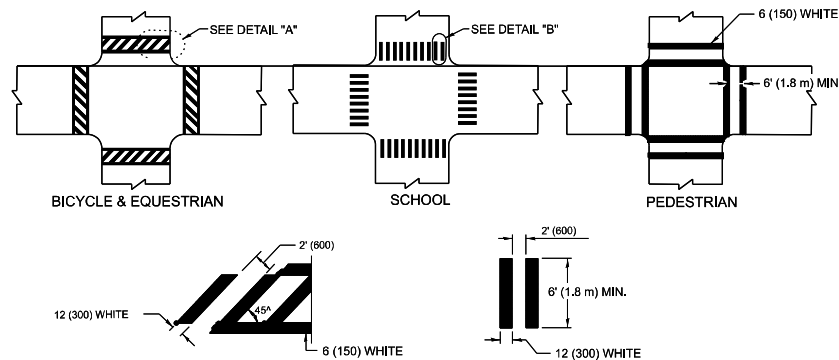


MULTI-LANE UNDIVIDED



MULTI-LANE DIVIDED  
WITH MEDIAN

TYPICAL LANE AND EDGE LINE MARKING

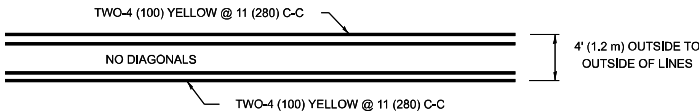


DETAIL "A"

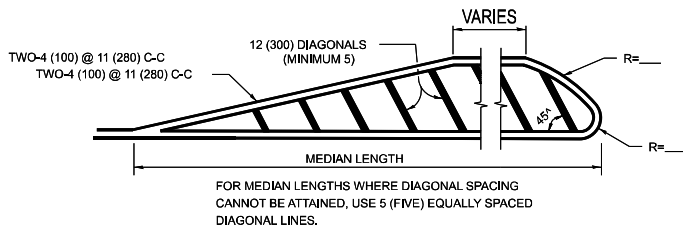
DETAIL "B"

TYPICAL CROSSWALK MARKING

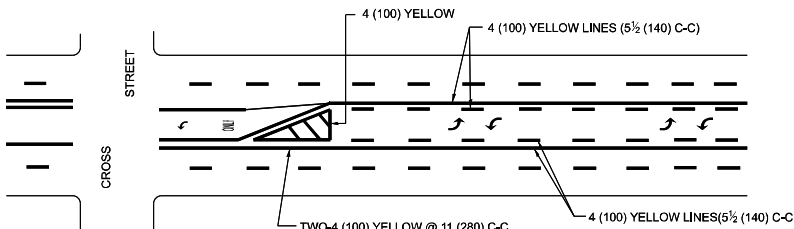
\* MARKINGS SHALL BE INSTALLED PARALLEL TO THE CENTERLINE OF THE ROAD WHICH IT CROSSES



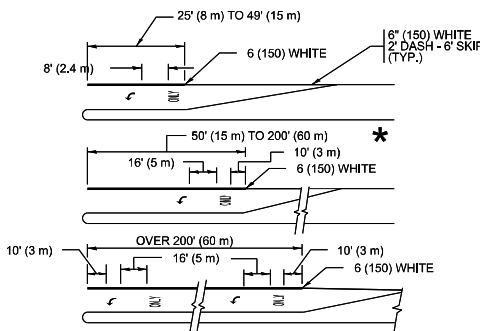
4' (1.2 m) WIDE MEDIANS ONLY



MEDIANS OVER 4' (1.2 m) WIDE



MEDIAN WITH TWO-WAY LEFT TURN LANE  
TYPICAL PAINTED MEDIAN MARKING

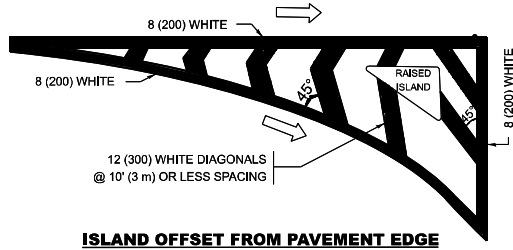


FULL SIZE LETTERS 8' (2.4 m) AND ARROWS SHALL BE USED.  
AREA = 15.6 SQ. FT. (1.5 m<sup>2</sup>) ONLY AREA = 20.8 SQ. FT. (1.9 m<sup>2</sup>)

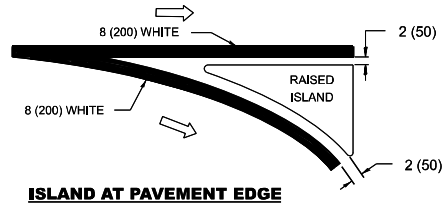
\* TURN LANES IN EXCESS OF 400' (120 m) IN LENGTH MAY HAVE AN ADDITIONAL SET OF ARROW - "ONLY" INSTALLED MIDWAY BETWEEN THE OTHER TWO SETS OF ARROW - "ONLY".

TYPICAL LEFT (OR RIGHT) TURN LANE

TYPICAL TURN LANE MARKING

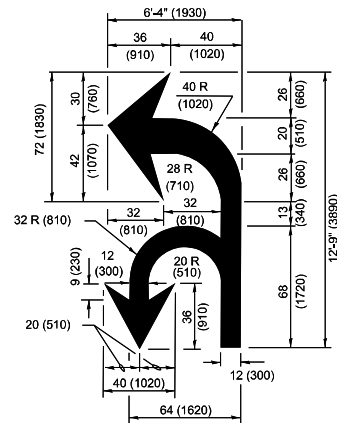


ISLAND OFFSET FROM PAVEMENT EDGE

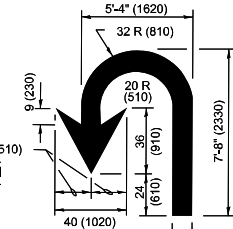


ISLAND AT PAVEMENT EDGE

TYPICAL ISLAND MARKING



COMBINATION  
LEFT AND U-TURN



U-TURN

LANE REDUCTION  
TRANSITION

\* LANE REDUCTION ARROWS REQUIRED AT SPEEDS OF 45 MPH OR GREATER OR WHEN SPECIFIED IN PLANS.

TYPE OF MARKING	WIDTH OF LINE	PATTERN	COLOR	SPACING / REMARKS
CENTERLINE ON 2 LANE PAVEMENT	4 (100)	SKIP-DASH	YELLOW	10' (3 m) LINE WITH 30' (9 m) SPACE
CENTERLINE ON MULTI-LANE UNDIVIDED PAVEMENT	2 @ 4 (100)	SOLID	YELLOW	11 (280) C-C
NO PASSING ZONE LINES: FOR ONE DIRECTION FOR BOTH DIRECTIONS	4 (100) 2 @ 4 (100)	SOLID SOLID	YELLOW YELLOW	5½ (140) C-C FROM SKIP-DASH CENTERLINE 11 (280) C-C OMIT SKIP-DASH CENTERLINE BETWEEN
LANE LINES	4 (100) 5 (125) ON FREEWAYS	SKIP-DASH SKIP-DASH	WHITE WHITE	10' (3 m) LINE WITH 30' (9 m) SPACE
DOTTED LINES (EXTENSIONS OF CENTER, LANE OR TURN LANE MARKINGS)	SAME AS LINE BEING EXTENDED	SKIP-DASH	SAME AS LINE BEING EXTENDED	2' (600) LINE WITH 6' (1.8 m) SPACE
EDGE LINES	4 (100)	SOLID	YELLOW-LEFT WHITE-RIGHT	OUTLINE MEDIANS IN YELLOW
TURN LANE MARKINGS	6 (150) LINE: FULL SIZE LETTERS & SYMBOLS (8' (2.4m))	SOLID	WHITE	SEE TYPICAL TURN LANE MARKING DETAIL
TWO WAY LEFT TURN MARKING	2 @ 4 (100) EACH DIRECTION 8' (2.4m) LEFT ARROW	SKIP-DASH AND SOLID IN PAIRS	YELLOW WHITE	10' (3 m) LINE WITH 30' (9 m) SPACE FOR SKIP-DASH; 5½ (140) C-C BETWEEN SOLID LINE AND SKIP-DASH LINE SEE TYPICAL TWO-WAY LEFT TURN MARKING DETAIL
CROSSWALK LINES (PEDESTRIAN) A. DIAGONALS (BIKE & EQUESTRIAN) B. LONGITUDINAL BARS (SCHOOL)	2 @ 8 (150) 12 (300) @ 45° 12 (300) @ 90°	SOLID SOLID SOLID	WHITE WHITE WHITE	NOT LESS THAN 6' (1.8 m) APART 2' (600) APART 2' (600) APART SEE TYPICAL CROSSWALK MARKING DETAILS.
STOP LINES	24 (600)	SOLID	WHITE	PLACE 4' (1.2 m) IN ADVANCE OF AND PARALLEL TO CROSSWALK, IF PRESENT. OTHERWISE, PLACE AT DESIRED STOPPING POINT, PARALLEL TO CROSSROAD CENTERLINE, WHERE POSSIBLE
PAINTED MEDIANS	2 @ 4 (100) WITH 12 (300) DIAGONALS @ 45° NO DIAGONALS USED FOR 4' (1.2 m) WIDE MEDIANS	SOLID	YELLOW: TWO WAY TRAFFIC WHITE: ONE WAY TRAFFIC	11 (280) C-C FOR THE DOUBLE LINE SEE TYPICAL PAINTED MEDIAN MARKING.
GORE MARKING AND CHANNELIZING LINES	8 (200) WITH 12 (300) DIAGONALS @ 45°	SOLID	WHITE	DIAGONALS: 15' (4.5 m) C-C (LESS THAN 30MPH (50 km/h)) 20' (6 m) C-C 30MPH (50 km/h) TO 45MPH (70 km/h)) 30' (9 m) C-C (OVER 45MPH (70 km/h))
RAILROAD CROSSING	24 (600) TRANSVERSE LINES: "RR" IS 8' (1.8 m) LETTERS: 16 (400) LINE FOR "X"	SOLID	WHITE	SEE STATE STANDARD 780001 AREA OF: "R"=3.6 SQ. FT. (0.33 m <sup>2</sup> ) EACH "X"=54.0 SQ. FT. (5.0 m <sup>2</sup> )
SHOULDER DIAGONALS (REQUIRED FOR SHOULDERS ≥ 8')	12 (300) @ 45°	SOLID	WHITE - RIGHT YELLOW - LEFT	50' (15 m) C-C (LESS THAN 30MPH (50 km/h)) 75' (25 m) C-C (30 MPH (50 km/h) TO 45MPH (70 km/h)) 150' (45 m) C-C (OVER 45MPH (70 km/h))
U TURN ARROW	SEE DETAIL	SOLID	WHITE	16.3 SF
2 ARROW COMBINATION LEFT AND U TURN	SEE DETAIL	SOLID	WHITE	30.4 SF

FOR FURTHER DETAILS ON PAVEMENT MARKING REFER TO  
STANDARD SPECIFICATIONS FOR ROAD AND BRIDGE  
CONSTRUCTION AND STATE STANDARD 780001.

All dimensions are in inches (millimeters)  
unless otherwise shown.

USER NAME = Rana.Kalo	DESIGNED - EVERS	REVISED - C. JUCIUS 09-09-09
DRAWN -	REVISOR - C. JUCIUS 07-01-13	
PLOT SCALE = 0.16666633" / in.	CHECKED -	REVISED - C. JUCIUS 12-21-15
PLOT DATE = 11/7/2024	DATE - 03-19-90	REVISED - C. JUCIUS 04-12-16

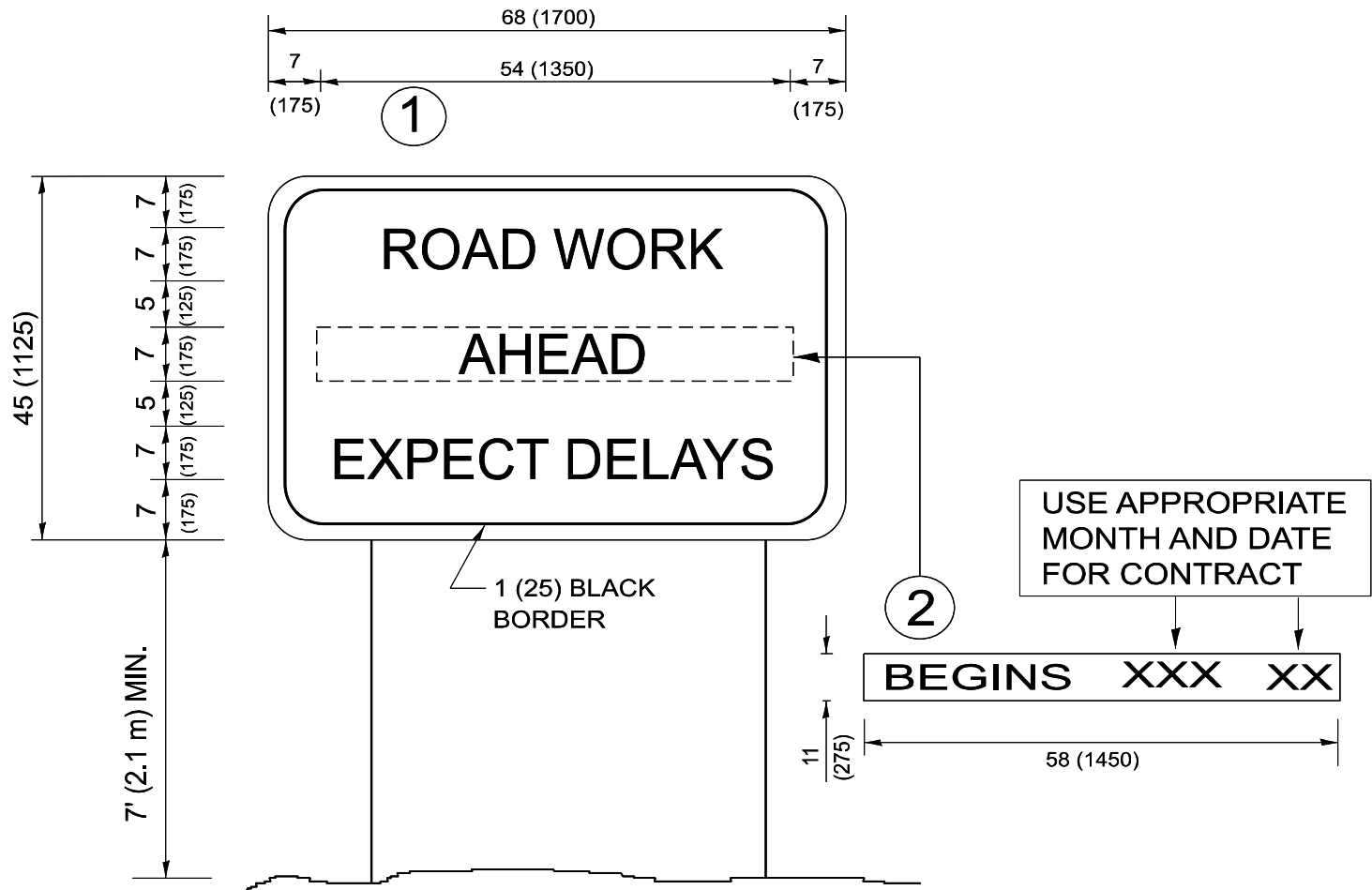
STATE OF ILLINOIS  
DEPARTMENT OF TRANSPORTATION

DISTRICT ONE  
TYPICAL PAVEMENT MARKINGS

SCALE: NONE SHEET 1 OF 1 SHEETS STA. TO STA.

F.A.P. RTE.	SECTION	COUNTY	TOTAL SHEETS	SHEET NO.
336	2024-1002-N	MCHENRY	21	20
TC-13		CONTRACT NO. 62X36		
		ILLINOIS FED. AID PROJECT		

MODEL: Untitled-2 [Sheet]  
FILE NAME: c:\pwwork\work\kalor\0930992\102125-sh+DistSigns.dgn



NOTES:

1. USE BLACK LETTERING ON ORANGE BACKGROUND.
2. ERECT SIGNS IN ADVANCE OF THE LOCATION FOR THE "ROAD CONSTRUCTION AHEAD" SIGN AT LOCATIONS AS DIRECTED BY THE ENGINEER.
3. ERECT SIGN ① WITH INSTALLED PANEL ② ONE WEEK PRIOR TO THE START OF CONSTRUCTION.
4. REMOVE PANEL ② SOON AFTER THE START OF CONSTRUCTION.
5. SEE SPECIAL PROVISION FOR "TEMPORARY INFORMATION SIGNING" FOR ADDITIONAL INFORMATION.
6. ONE SIGN ASSEMBLY EQUALS 25.70 SQ. FT. (2.3 SQ. M.)
7. SHALL BE PAID FOR AS TEMPORARY INFORMATION SIGNING.

ALL DIMENSIONS ARE IN INCHES (MILLIMETERS)  
UNLESS OTHERWISE SHOWN.

	USER NAME   = Rana.Kalo	DESIGNED   -	REVISED   -   R. MIRS 09-15-97	STATE OF ILLINOIS DEPARTMENT OF TRANSPORTATION	ARTERIAL ROAD INFORMATION SIGN				F.A.P. RTE.	SECTION	COUNTY	TOTAL SHEETS	SHEET NO.
		DRAWN    -	REVISED   -   R. MIRS 12-11-97						336	2024-1002-N	MCHENRY	21	21
	PLOT SCALE   = 0.16666633 "/ in.	CHECKED   -	REVISED   - T. RAMMACHER 02-02-99						TC-22				
	PLOT DATE    = 11/7/2024	DATE       -	REVISED   -   C. JUCIUS 01-31-07		SCALE: NONE		SHEET   1	OF   1	SHEETS	STA.	TO STA.		
							ILLINOIS   FED. AID PROJECT						