

MODEL: Default
FILE: 22722-4675-00 IDOT Various Phase 1 (ITS 206-002)\\WO 07 63718\\DC\\CADD Sheets\\62718-rt-gennotes.dgn

INDEX OF SHEETS

SHEET NO.	TITLE
1	COVER SHEET
2	INDEX OF SHEETS, STATE STANDARDS, HMA TABLE, AND GENERAL NOTES
3-4	SUMMARY OF QUANTITIES
5-7	TRAFFIC CONTROL PLANS
8	ROADWAY PLAN
9	PAVEMENT MARKING PLAN
10	DETECTOR LOOP REPLACEMENT PLAN
11-19	STRUCTURAL DRAWINGS - S.N. 016-2415
20-24	TRAFFIC SIGNAL RECORDS - WESTERN AVENUE AND MONEE ROAD
25-29	TRAFFIC SIGNAL RECORDS - WESTERN AVENUE AND SAUK TRAIL
30	BUTT JOINT AND HMA TAPER DETAILS (BD-32)
31	TRAFFIC CONTROL AND PROTECTION FOR SIDE ROADS, INTERSECTIONS, AND DRIVEWAYS (TC-10)
32	TYPICAL APPLICATIONS RAISED REFLECTIVE PAVEMENT MARKERS (SNOW-PLOW RESISTANT) (TC-11)
33	TYPICAL PAVEMENT MARKINGS (TC-13)
34	SHORT TERM PAVEMENT MARKING LETTERS AND SYMBOLS (TC-16)
35	ARTERIAL ROAD INFORMATION SIGN (TC-22) / DRIVEWAY ENTRANCE SIGNING (TC-26)

STATE STANDARDS

STANDARD NO.	DRAWING NAME
000001-08	STANDARD SYMBOLS, ABBREVIATIONS AND PATTERNS
001001-02	AREAS OF REINFORCEMENT BARS
606301-04	PC CONCRETE ISLANDS AND MEDIANS
630001-13	STEEL PLATE BEAM GUARDRAIL
701427-05	LANE CLOSURE, MULTILANE, INTERMITTENT OR MOVING OPER., FOR SPEEDS ≤ 40 MPH
701502-09	URBAN LANE CLOSURE, 2L, 2W, WITH BIDIRECTIONAL LEFT TURN LANE
701601-09	URBAN LANE CLOSURE, MULTILANE, 1W OR 2W WITH NONTRAVERABLE MEDIAN
701606-10	URBAN SINGLE LANE CLOSURE, MULTILANE, 2W WITH MOUNTABLE MEDIAN
701611-01	URBAN HALF ROAD CLOSURE, MULTILANE, 2W WITH MOUNTABLE MEDIAN
701801-06	SIDEWALK, CORNER OR CROSSWALK CLOSURE
701901-10	TRAFFIC CONTROL DEVICES
704001-08	TEMPORARY CONCRETE BARRIER
780001-05	TYPICAL PAVEMENT MARKINGS
782006-01	GUARDRAIL AND BARRIER WALL REFLECTOR MOUNTING DETAILS

HMA TABLE

HOT-MIX ASPHALT MIXTURE REQUIRMENTS		QUALITY MANAGEMENT PROGRAM (QMP)
MIXTURE TYPE	AIR VOIDS @ Noles	
APPROACH SLABS		
HOT-MIX ASPHALT SURFACE COURSE, IL-9.5, MIX "D", N70, VARIES	4% @ 70 Gyr	QC/QA
ASPHALT MEDIAN		
HOT-MIX ASPHALT SURFACE COURSE, IL-9.5, MIX "D", N70, VARIES	4% @ 70 Gyr	QC/QA
QMP DESIGNATION: QUALITY CONTROL/ QUALITY ASSURANCE (QC/QA): QUALITY CONTROL FOR PERFORMANCE (QCP): PAY FOR PERFORMANCE (PFP)		
MIXTURE REQUIREMENT NOTES:		
1.THE UNIT WEIGHT USED TO CALCULATE ALL HMA SURFACE MIXTURE QUANTITIES IS 112 LBS/SQ YD/LN.		
2.THE "AC TYPE" FOR POLYMERIZED HMA MIXES SHALL BE "SBS/SBR PG 76 -22" AND FOR NON-POLYMERIZED HMA THE "AC TYPE" SHALL BE "PG 64 -22" UNLESS MODIFIED BY RECLAIMED MATERIALS SPECIFICATIONS.		

GENERAL NOTES

- THE EXACT LOCATION OF ALL UTILITIES SHALL BE FIELD VERIFIED BY THE CONTRACTOR BEFORE ORDERING ANY MATERIALS AND STARTING ANY WORK. FOR LOCATIONS OF UTILITIES, LOCALLY OWNED EQUIPMENT, LEASED ENFORCEMENT CAMERA SYSTEM FACILITIES AND IDOT UNDERGROUND FACILITIES, CONTACT THE LOCAL COUNTIES, MUNICIPALITIES AND IDOT FOR LOCATES.
- MEADE ELECTRIC COMPANY, THE IDOT DISTRICT ONE ELECTRICAL MAINTENANCE CONTRACTOR, LOCATES IDOT ELECTRICAL EQUIPMENT AND UNDERGROUND CABLES. CALL 773-287-7672 FOR THE INITIAL LOCATE. REQUEST FOR LOCATES OF PREVIOUSLY MARKED FACILITIES MAY BE AT THE CONTRACTOR'S EXPENSE.
- IN ADDITION TO FIELD REVIEW AND AERIAL DATA, PLAN DIMENSIONS AND DETAILS RELATIVE TO THE EXISTING FACILITIES HAVE BEEN TAKEN FROM EXISTING PLANS AND ARE SUBJECT TO CONSTRUCTION VARIATIONS. PLAN DIMENSIONS AND DETAILS RELATIVE TO EXISTING PLANS ARE SUBJECT TO ROUTINE VARIATIONS. IT SHALL BE THE CONTRACTOR'S RESPONSIBILITY TO VERIFY EXISTING DIMENSIONS AND DETAILS AFFECTING NEW CONSTRUCTION AND MAKE NECESSARY APPROVED ADJUSTMENTS PRIOR TO CONSTRUCTION OR ORDERING MATERIALS. SUCH VARIATIONS SHALL NOT BE CAUSE FOR ADDITIONAL COMPENSATION FOR A CHANGE IN THE SCOPE OF WORK. HOWEVER, THE CONTRACTOR WILL BE PAID FOR THE QUANTITY ACTUALLY FURNISHED AT THE BID PRICE FOR THE WORK.
- THE CONTRACTOR WILL NOT BE ALLOWED TO SET UP A YARD OR FIELD OFFICE ON STATE PROPERTY WITHOUT WRITTEN PERMISSION FROM THE DEPARTMENT.
- IT SHALL BE THE CONTRACTOR'S RESPONSIBILITY TO VERIFY ALL DIMENSIONS AND CONDITIONS EXISTING IN THE FIELD PRIOR TO BEGINNING CONSTRUCTION AND ORDERING MATERIALS.
- THE CONTRACTOR SHALL TAKE ALL NECESSARY PRECAUTIONS FOR THE PROTECTION OF EXISTING PLANT MATERIAL FOR WHICH THE CONTRACT DOES NOT PROVIDE REMOVAL. THE PROTECTION OF EXISTING PLANT MATERIAL AND THE REPAIR OR REPLACEMENT OF EXISTING PLANT MATERIAL DAMAGED BY THE CONTRACTOR SHALL BE DONE IN ACCORDANCE WITH THE REQUIREMENTS OF SECTION 201 OF THE STANDARD SPECIFICATIONS.
- THE DEPARTMENT HAS NOT OBTAINED ANY PERMITS FOR OFFSITE BORROW, WASTE, USE (BWU) AREAS. PRIOR TO WORKING IN BWU AREAS, IF THE CONTRACTOR CHOOSES TO USE ACTIVITIES REQUIRING PERMITS IT IS THE CONTRACTOR'S RESPONSIBILITY TO SECURE THE PROPER PERMITS. IN ADDITION TO THE BORROW REVIEW (BDE 2289) AND USE/WASTE REVIEW (BDE 2290) SUBMITTALS, THE CONTRACTOR SHALL SUBMIT AN EROSION AND SEDIMENT CONTROL (ESC) PLAN FOR EVERY BWU SITE TO THE DEPARTMENT FOR ACCEPTANCE. GUIDELINES FOR ACCEPTABLE BWU PRACTICES CAN BE FOUND IN SECTION 11.G.1. THE COST OF ALL MATERIALS AND LABOR NECESSARY TO COMPLY WITH THE ABOVE PROVISIONS TO PREPARE AND IMPLEMENT ESC PLANS WILL NOT BE PAID FOR SEPARATELY, BUT SHALL BE CONSIDERED AS INCLUDED IN THE CONTRACT UNIT PRICES AND NO ADDITIONAL COMPENSATION WILL BE ALLOWED.
- THE CONTRACTOR SHALL CONTACT KALPANA KANNAN-HOSADURGA THE DISTRICT ONE TRAFFIC CONTROL SUPERVISOR AT KALPANA.KANNAN-HOSADURGA@ILLINOIS.GOV A MINIMUM OF 72 HOURS IN ADVANCE OF BEGINNING WORK.
- THE RESIDENT ENGINEER SHALL CONTACT PATRICE HARRIS, AREA TRAFFIC FIELD TECHNICIAN, AT PATRICE.HARRIS@ILLINOIS.GOV A MINIMUM OF TWO (2) WEEKS PRIOR TO THE PLACEMENT OF PERMANENT PAVEMENT MARKINGS.
- THE DEPARTMENT HAS DETERMINED THAT IN STREAM WORK IS NOT REQUIRED FOR THE WORK SPECIFIED IN THIS CONTRACT. THE DEPARTMENT HAS NOT OBTAINED A 404 PERMIT. IF THE CONTRACTOR CHOSES TO USE ACTIVITIES REQUIRING AN USACE 404 PERMIT IT IS THE CONTRACTOR'S RESPONSIBILITY TO SECURE THE PROPER USACE PERMITS.
- THESE PLANS HAVE BEEN PREPARED FROM NOTES RECEIVED FROM I.D.O.T. FIELD MAINTENANCE ENGINEERS.
- THE CONTRACTOR SHALL USE CARE IN REMOVING OR EXCAVATING NEAR ALL EXISTING ITEMS WHICH WILL REMAIN. ANY DAMAGE DONE TO EXISTING ITEMS BY THE CONTRACTOR SHALL BE REPAIRED AT THE CONTRACTOR'S EXPENSE.
- SAW CUTTING PRIOR TO ANY REMOVAL ITEMS NOTED ON THE PLANS OR DIRECTED BY THE ENGINEER SHALL BE CONSIDERED INCLUDED IN THE COST OF THE ITEMS BEING REMOVED.
- FOR WORK OUTSIDE THE LIMITS OF BRIDGE APPROACH PAVEMENT. ALL REFERENCES IN THE HIGHWAY STANDARDS AND STANDARD SPECIFICATIONS FOR REINFORCEMENT, DOWEL BARS AND TIE BARS IN PAVEMENT SHALL BE EPOXY COATED UNLESS NOTED ON THE PLANS.
- DOUBLE LANE MARKERS ARE TO BE USED AS SHOWN ON THE DISTRICT ONE DETAIL "TYPICAL APPLICATIONS-RAISED REFLECTIVE PAVEMENT MARKERS (SNOW-PLOW RESISTANT)" SHOWN IN PLANS.
- THE CENTERLINE IS FOR INFORMATION ONLY.
- BEFORE BEGINNING ANY WORK, THE CONTRACTOR SHALL RETAIN AND RECORD, FOR FUTURE REFERENCE, ALL EXISTING PAVEMENT MARKING LINES (AND RAISED REFLECTIVE PAVEMENT MARKERS) IN ORDER THAT THESE LOCATIONS BE RE-ESTABLISHED FOR STRIPING. EXACT LOCATIONS OF ALL PAVEMENT MARKINGS SHALL BE AS DIRECTED BY THE ENGINEER.
- PHOSPHORUS FERTILIZER HAS BEEN INTENTIONALLY OMITTED FROM THE CONTRACT DUE TO THE PROXIMITY TO THORN CREEK. A PHOSPHORUS-FREE FERTILIZER SHALL BE USED (MIDDLE NUMBER SHOULD EQUAL 0).

MAINTENANCE OF TRAFFIC GENERAL NOTES

1. ALL MAINTENANCE OF TRAFFIC (MOT) LANE CLOSURES CAN BE COMPLETED WITH IDOT HIGHWAY STANDARDS. THE MOT PLANS SHALL SERVE AS A GUIDE FOR SAFE DIVERSION OF TRAFFIC DURING EXECUTION OF THIS CONTRACT. HOWEVER, THE CONTRACTOR MAY IMPROVE OR MODIFY THE MOT PLANS TO MEET CONSTRUCTION NEEDS BUT NOT AT THE EXPENSE OF PUBLIC SAFETY OR CONVENIENCE. ANY CHANGES TO THE MOT PLANS SHALL BE SUBMITTED TO THE ENGINEER FOR APPROVAL.
2. THE CONTRACTOR SHALL CONTACT THE IDOT DISTRICT 1 ARTERIAL TRAFFIC CONTROL SUPERVISOR AT KALPANA.KANNAN-HOSADURGA@ILLINOIS.GOV A MINIMUM OF 72 HOURS IN ADVANCE OF BEGINNING WORK.
3. THE WESTERN AVENUE WORK ZONE SPEED LIMIT SHALL BE 35 MPH.
4. CHANGEABLE MESSAGE SIGNS SHALL BE INSTALLED TWO WEEKS PRIOR TO ALL TRAFFIC STAGE CHANGES ON EACH APPROACH OF THE EFFECTED ROADWAY TO WARN MOTORISTS OF THE UPCOMING EVENT. THE SIGN MESSAGES SHALL BE REVISED TWO WEEKS THEREAFTER WITH MESSAGES WARNING TRAFFIC OF POTENTIAL TRAFFIC DELAYS, QUEUING AND/OR WITH MESSAGES NOTIFYING TRAFFIC TO USE ALTERNATE ROUTES. THE SIGN LOCATIONS AND MESSAGES SHALL BE DETERMINED BY THE ENGINEER.
5. THE CONTRACTOR SHALL NOT OBSTRUCT ANY EXISTING SIGN OR PEDESTRIAN SIDEWALK WITH THE PLACEMENT OF TEMPORARY CONSTRUCTION SIGNING. THE CONTRACTOR MUST MAINTAIN A 4-FOOT MINIMUM CLEAR WIDTH ON ALL SIDEWALKS WHEN INSTALLING TEMPORARY CONSTRUCTION SIGNS ON OR NEAR SIDEWALKS THAT ARE OPEN TO PEDESTRIANS.
6. CONTRACTOR SHALL REMOVE OR COVER ALL W21-1 (WORKERS PRESENT) AND W20-7 (FLAGGER) SIGNS, WITHIN AN HOUR, WHEN WORKERS ARE NOT PRESENT OR IF THE SIGN IS NOT APPLICABLE.



WESTERN AVENUE CONSTRUCTION STAGING

MAINTENANCE OF TRAFFIC - STAGE 1

CONSTRUCTION:

1. COMPLETE BRIDGE DECK AND JOINT REPAIRS AND OVERLAY ON THE INSIDE OF THE BRIDGE IN THE NORTHBOUND AND SOUTHBOUND DIRECTIONS.
2. COMPLETE APPROACH SLAB REPAIRS AND OVERLAY ON THE INSIDE OF THE NORTHBOUND AND SOUTHBOUND DIRECTIONS.

MAINTENANCE OF TRAFFIC:

1. CLOSE THE INSIDE NORTHBOUND AND SOUTHBOUND LANE OF TRAFFIC AND SHIFT TRAFFIC TO THE OUTSIDE NORTHBOUND AND SOUTHBOUND LANE. 1 LANE SHALL BE MAINTAINED EACH DIRECTION.

MAINTENANCE OF TRAFFIC - STAGE 2

CONSTRUCTION:

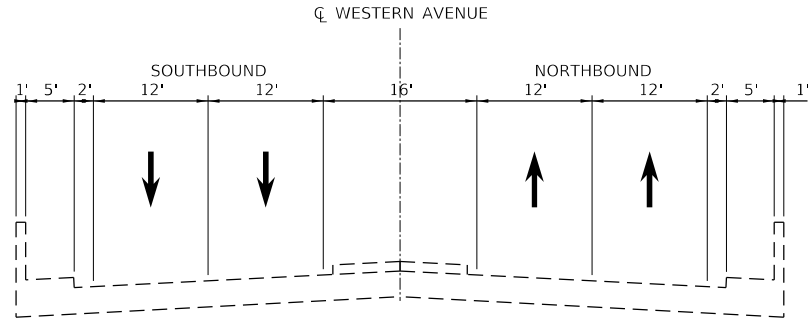
1. COMPLETE BRIDGE DECK AND JOINT REPAIRS AND OVERLAY ON THE OUTSIDE OF THE BRIDGE IN THE NORTHBOUND AND SOUTHBOUND DIRECTIONS.
2. COMPLETE APPROACH SLAB REPAIRS AND OVERLAY ON THE OUTSIDE OF THE NORTHBOUND AND SOUTHBOUND DIRECTIONS.

MAINTENANCE OF TRAFFIC:

1. CLOSE THE OUTSIDE NORTHBOUND AND SOUTHBOUND LANE OF TRAFFIC AND SHIFT TRAFFIC TO THE INSIDE NORTHBOUND AND SOUTHBOUND LANE. 1 LANE SHALL BE MAINTAINED EACH DIRECTION.

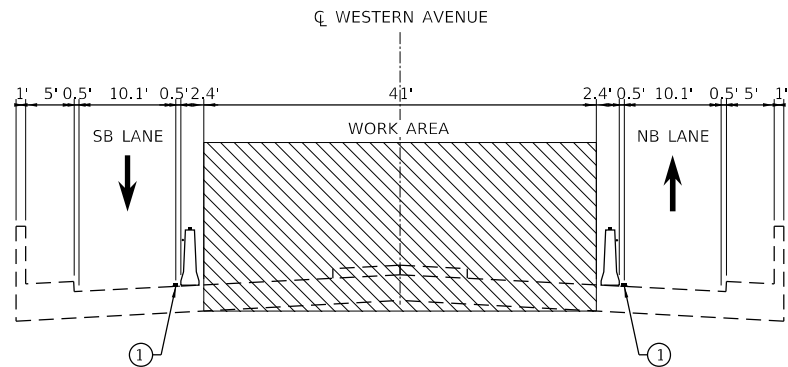
WORK ZONE SPEED LIMIT:

	EXISTING POSTED SPEED	PROPOSED POSTED SPEED
STAGE 1	40 MPH	35 MPH
STAGE 2	40 MPH	35 MPH



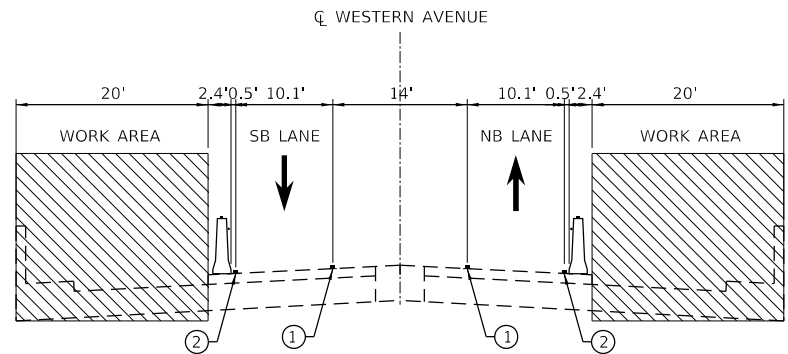
EXISTING TYPICAL CROSS SECTION

ON SN 016-2415



STAGE 1 CONSTRUCTION

ON SN 016-2415



STAGE 2 CONSTRUCTION

ON SN 016-2415

MOT TYPICAL LEGEND:

- 1 TEMPORARY PAVEMENT MARKING TAPE, TYPE IV (YELLOW)
- 2 TEMPORARY PAVEMENT MARKING TAPE, TYPE IV (WHITE)
- WORK AREA
- DIRECTION OF TRAVEL
- TEMPORARY CONCRETE BARRIER WITH TYPE C, BI-DIRECTIONAL CRYSTAL REFLECTORS PER STD 704001 AND 782006.
- TEMPORARY PAVEMENT MARKING

REVISED SHEET 2/20/2025

MODEL Default
FILE NAME: I:\R-22\222-4675-00_IDOT Various Phase 2 (PFB 206-002)\WO 07 62T48\DWG\CADD_Sheets\62T48-etc-mot-01.dgn

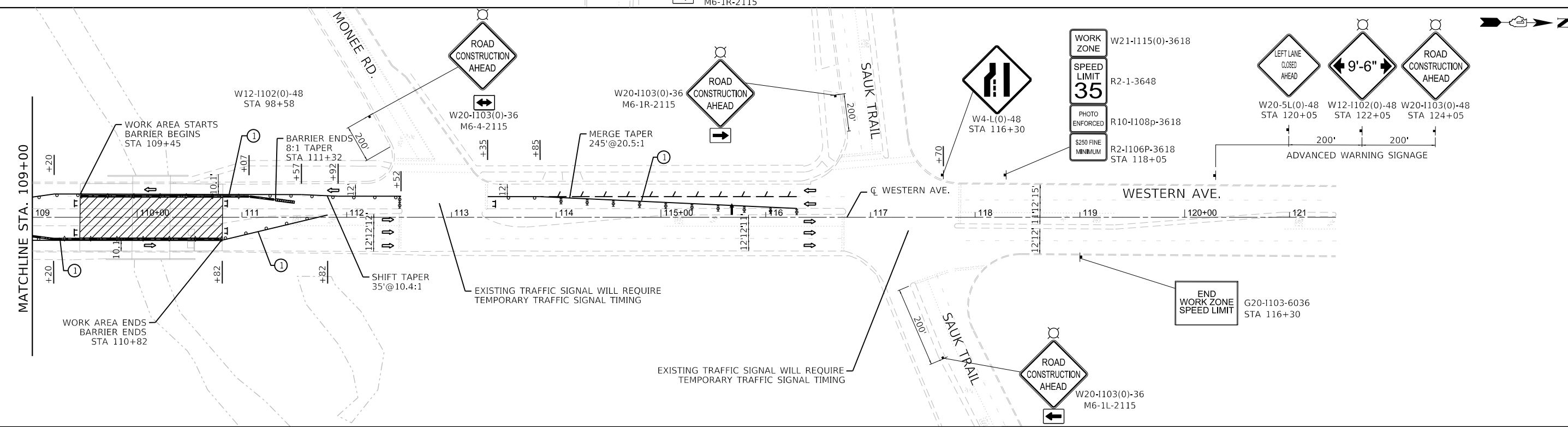
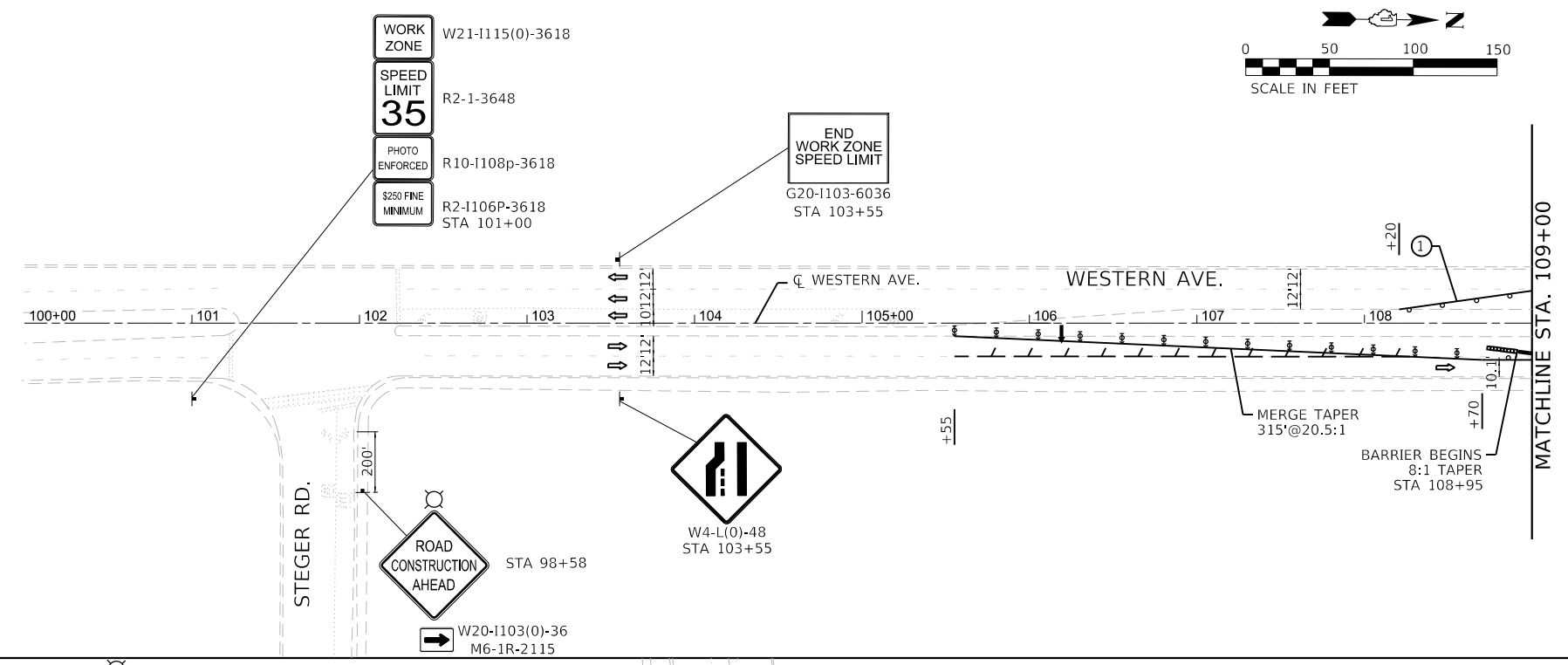
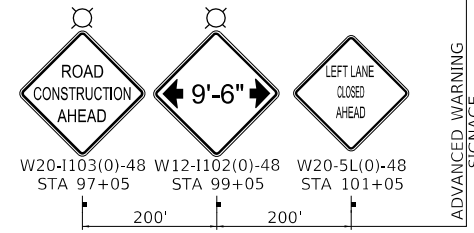
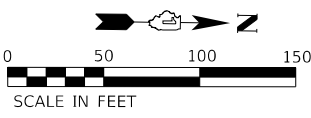
	INFRASTRUCTURE ENGINEERING INCORPORATED 1 South Wacker Suite 2650 Chicago, IL 60606 P 312.425.9569 F 312.425.9568 www.infrastructure-eng.com	USER NAME = ALane	DESIGNED - CW	REVISED -
			DRAWN - CW	REVISED -
		PLOT SCALE = 20.0000 ' / in.	CHECKED - ACL	REVISED -
		PLOT DATE = 1/24/2025	DATE - 12/09/2024	REVISED -

STATE OF ILLINOIS
DEPARTMENT OF TRANSPORTATION

TRAFFIC CONTROL PLANS – GENERAL NOTES
WESTERN AVENUE OVER THORN CREEK

SCALE: 1" = 50' SHEET OF SHEETS STA. TO STA.

F.A.U. RTE.	SECTION	COUNTY	TOTAL SHEETS	SHEET NO.
2845	FAU 2845 22 BJ	COOK	35	5
CONTRACT NO. 62T48				
		ILLINOIS	FED. AID PROJECT	

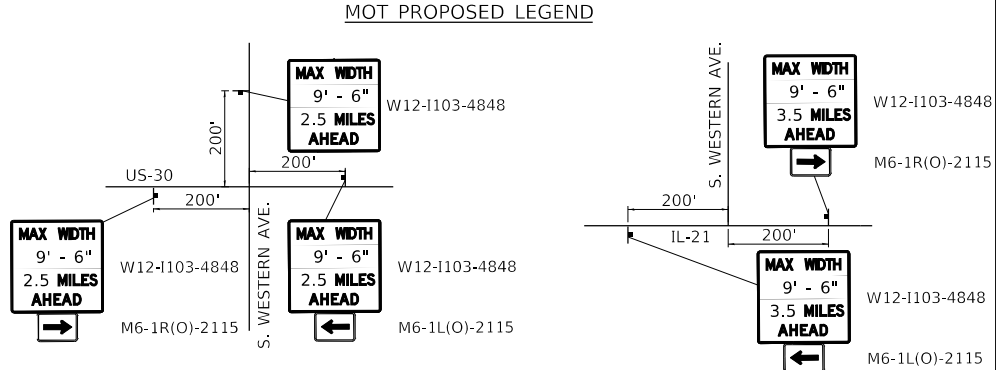


- MOT SYMBOL LEGEND**
- DRUM OR BARRICADE
 - DIRECTION INDICATOR BARRICADE
 - WORK AREA
 - TYPE III BARRICADE WITH FLASHING LIGHTS
 - BARRICADE OR DRUM WITH FLASHING LIGHT
 - DIRECTION OF TRAFFIC
 - SIGN ON PORTABLE OR PERMANENT SUPPORT
 - TEMPORARY CONCRETE BARRIER
 - IMPACT ATTENUATOR
 - CRYSTAL, BIDIRECTIONAL BARRIER WALL REFLECTOR
 - PAVEMENT MARKING REMOVAL
 - ARROW BOARD

- MOT PROPOSED LEGEND**
- ① TEMPORARY PAVEMENT MARKING TAPE, TYPE IV 4" (YELLOW)
 - ② TEMPORARY PAVEMENT MARKING TAPE, TYPE IV 4" (WHITE)

NOTE: REMOVE CONFLICTING PAVEMENT MARKING USING PAVEMENT MARKING REMOVAL - WATERBLASTING

1 REVISED ENTIRE SHEET 2/20/2025



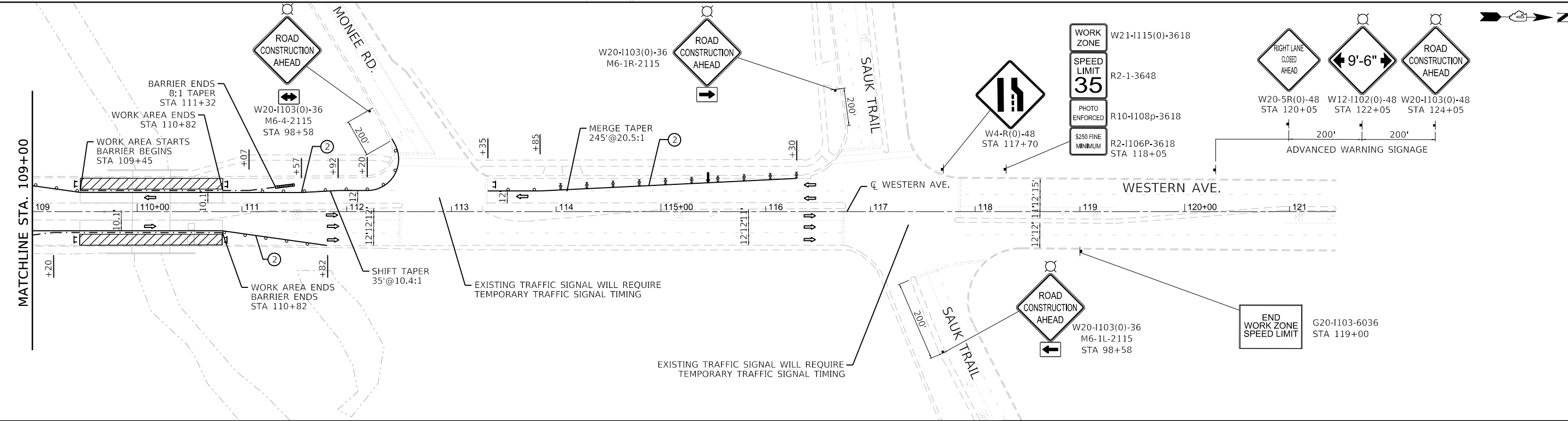
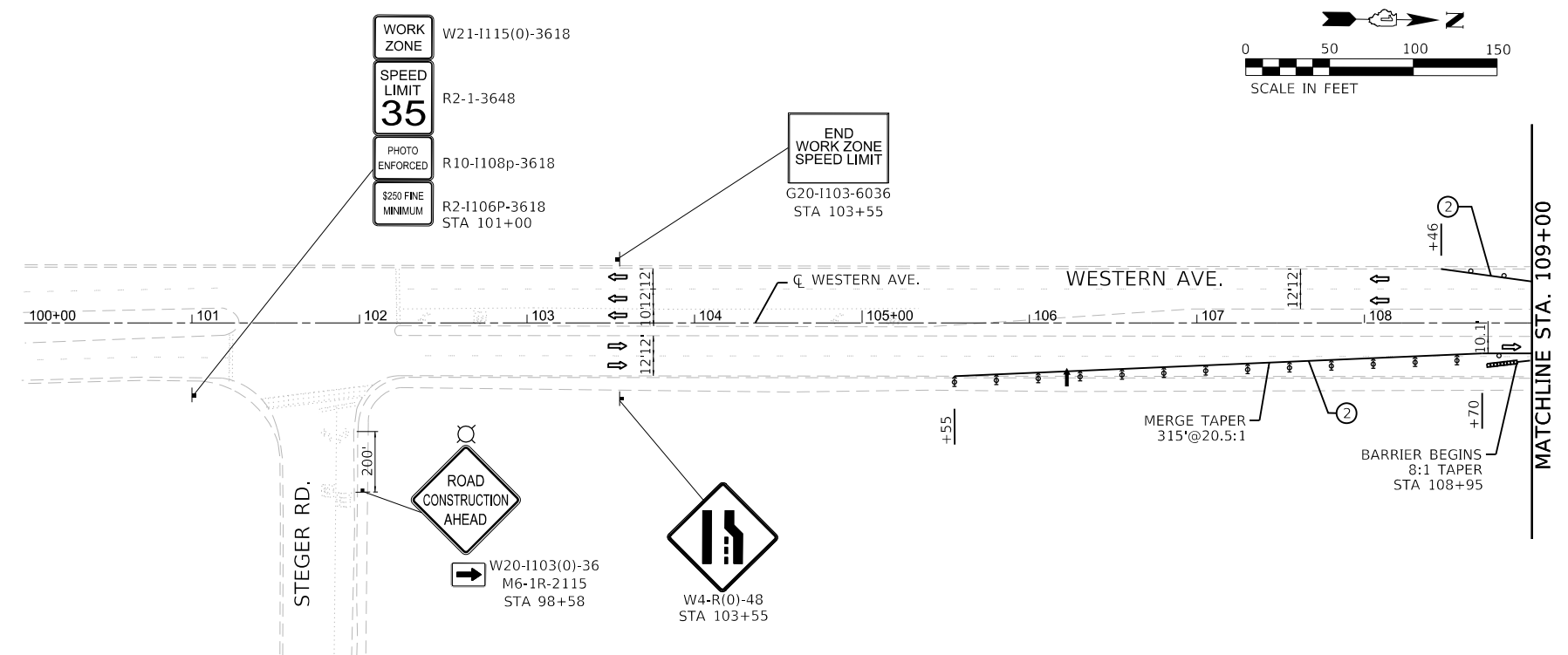
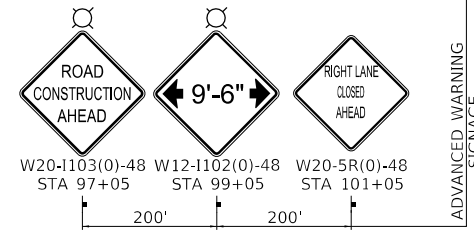
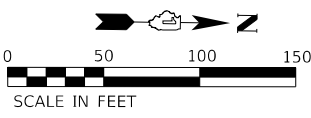
	USER NAME = ALane	DESIGNED - CW	REVISED - AMT 1/31/2025
	PLOT SCALE = 100.0000 ' / in.	DRAWN - CW	REVISED -
	PLOT DATE = 2/18/2025	CHECKED - ACL	REVISED -
		DATE - 12/09/2024	REVISED -

STATE OF ILLINOIS
DEPARTMENT OF TRANSPORTATION

TRAFFIC CONTROL PLANS - STAGE 1
WESTERN AVENUE OVER THORN CREEK

SCALE: 1" = 50' SHEET OF SHEETS STA. TO STA.

F.A.U. RTE.	SECTION	COUNTY	TOTAL SHEETS	SHEET NO.
2845	FAU 2845 22 BJ	COOK	35	6
CONTRACT NO. 62T48				



MOT SYMBOL LEGEND

- DRUM OR BARRICADE
- ⬆ DIRECTION INDICATOR BARRICADE
- ▨ WORK AREA
- ⚡ TYPE III BARRICADE WITH FLASHING LIGHTS
- ⚡ BARRICADE OR DRUM WITH FLASHING LIGHT
- ➡ DIRECTION OF TRAFFIC
- ⚡ SIGN ON PORTABLE OR PERMANENT SUPPORT
- ▬ TEMPORARY CONCRETE BARRIER
- ▬ IMPACT ATTENUATOR
- ◇ CRYSTAL, BIDIRECTIONAL BARRIER WALL REFLECTOR
- ▬ PAVEMENT MARKING REMOVAL
- ➡ ARROW BOARD

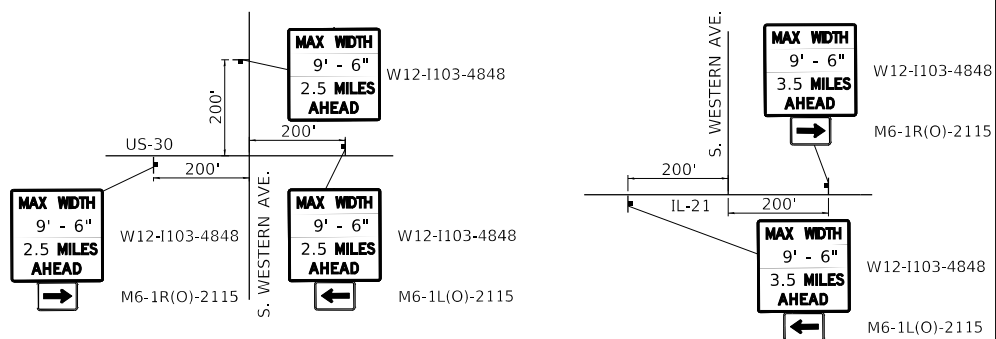
MOT PROPOSED LEGEND

- ① TEMPORARY PAVEMENT MARKING TAPE, TYPE IV 4" (YELLOW)
- ② TEMPORARY PAVEMENT MARKING TAPE, TYPE IV 4" (WHITE)

NOTE: REMOVE CONFLICTING PAVEMENT MARKING USING PAVEMENT MARKING REMOVAL - WATERBLASTING

1 REVISED ENTIRE SHEET 2/20/2025

MOT PROPOSED LEGEND



<div><div></div><div></div><div></div></div> <div>INFRASTRUCTURE ENGINEERING INCORPORATED 1 South Wacker Suite 2650 Chicago, IL 60606 P 312.425.9568 F 312.425.9568 www.infrastructure-eng.com</div>	USER NAME = ALane	DESIGNED - CW	REVISED - <div><div></div>AMT 1/31/2025</div>	<div>STATE OF ILLINOIS</div> <div>DEPARTMENT OF TRANSPORTATION</div>	<div>TRAFFIC CONTROL PLANS – STAGE 2</div> <div>WESTERN AVENUE OVER THORN CREEK</div>				F.A.U. RTE.	SECTION	COUNTY	TOTAL SHEETS	SHEET NO.
	PLOT SCALE = 100.0000' / in.	DRAWN - CW	REVISED -						2845	FAU 2845 22 BJ	COOK	35	7
	PLOT DATE = 2/18/2025	CHECKED - ACL	REVISED -		CONTRACT NO. 62T48								
		DATE - 12/09/2024	REVISED -		ILLINOIS FED. AID PROJECT								
	SCALE: 1" = 50'		SHEET OF SHEETS		STA. TO STA.								