

03-07-2025 LETTING ITEM 007

STATE OF ILLINOIS  
DEPARTMENT OF TRANSPORTATION

**PLANS FOR PROPOSED  
FEDERAL AID HIGHWAY**  
MUN ROUTE 0242 (HIGHPOINT DRIVE)  
WEBER ROAD TO 900' SOUTH OF ALDER CREEK DRIVE  
ROADWAY RESURFACING  
SECTION NO.: 24-00078-00-RS  
PROJECT NO.: V1SZ(169)  
VILLAGE of ROMEOVILLE  
WILL COUNTY  
JOB NO.: C-91-047-25

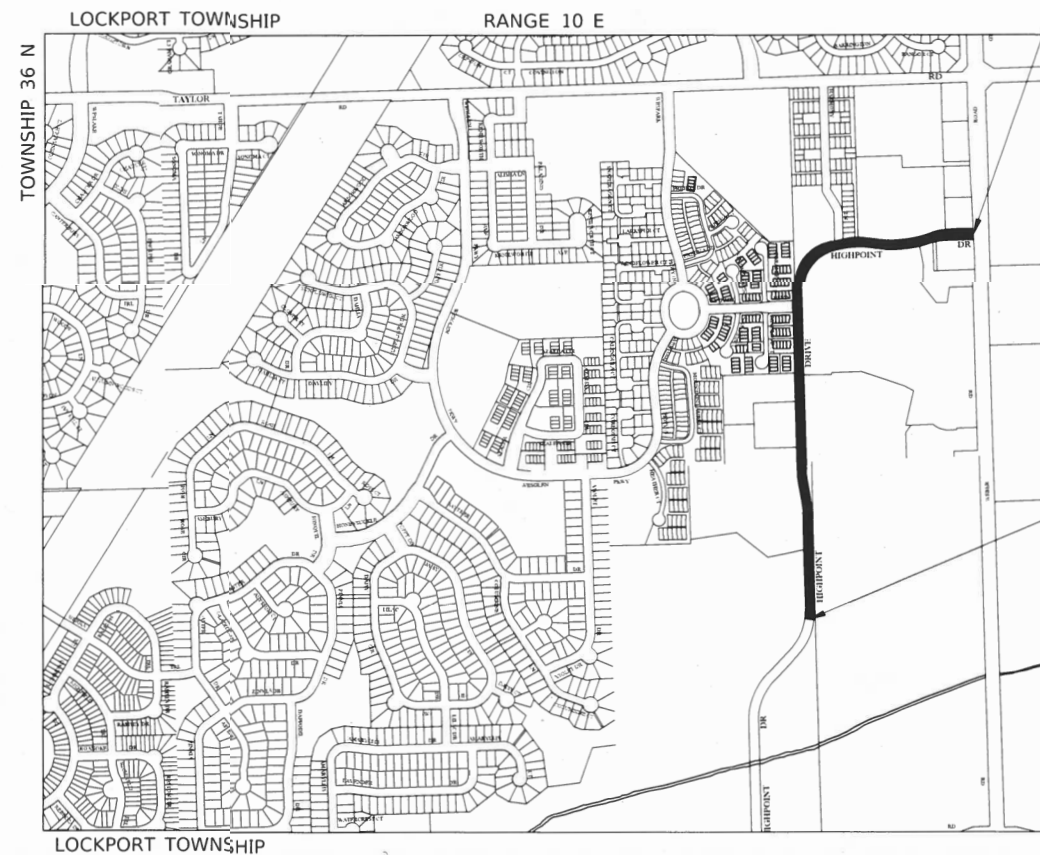
**HIGHPOINT DRIVE**  
**WEBER ROAD TO 900' SOUTH OF ALDER CREEK DRIVE**  
2023 ADT- 2,850  
POSTED SPEED LIMIT- 25 MPH  
FUNCTIONAL CLASSIFICATION- MINOR COLLECTOR

SCALES { PLAN - 1"=50'  
0 50' 100' 1"=50'

FULL SIZE PLANS HAVE BEEN PREPARED USING STANDARD  
ENGINEERING SCALES, REDUCED SIZED PLANS WILL NOT  
CONFORM TO STANDARD SCALES, IN MAKING MEASUREMENTS  
ON REDUCED PLANS, THE ABOVE SCALES MAY BE USED.

J. U. L. I. E.  
JOINT UTILITY LOCATION INFORMATION FOR EXCAVATION  
1 - 800 - 892 - 0123  
OR 811

VILLAGE  
OF  
ROMEOVILLE



LOCATION MAP  
NOT TO SCALE

GROSS AND NET LENGTH= 3715 FEET= 0.70 MILES

END PROJECT  
HIGHPOINT DRIVE  
63+92.22

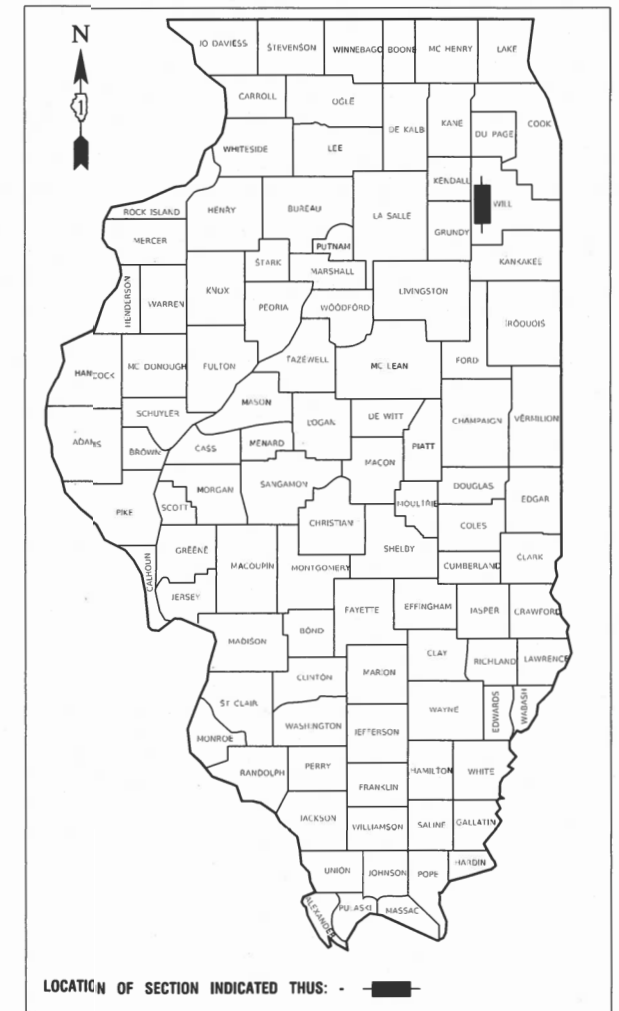
BEGIN PROJECT  
HIGHPOINT DRIVE  
26+77.11



12-18-2024

F.A.U. RTE	SECTION	COUNTY	TOTAL SHEETS	SHEET NO.
0242	24-00078-00-RS	WILL	20	1
STA.		TO STA.		
FED. ROAD DIST. NO. 1		ILLINOIS	FED. AID PROJECT	V1SZ(169)

CONTRACT NO. 61L13



STATE OF ILLINOIS DEPARTMENT OF TRANSPORTATION	
APPROVED	12/18/2024
<i>John Noah</i> VILLAGE OF ROMEOVILLE, MAYOR	
PASSED	Jan 2, 2025
<i>C. H. Noah</i> DISTRICT 1 ENGINEER OF LOCAL ROADS & STREETS	
RELEASING FOR BID BASED ON LIMITED REVIEW	1.16.2025
<i>Joe Rios</i> REGIONAL ENGINEER	

PRINTED BY THE AUTHORITY OF  
THE STATE OF ILLINOIS



				FED 80%	FED 80%
				VILLAGE 20%	VILLAGE 20%
				ROADWAY	SAFETY
CODE NO.	PAY ITEM	UNIT	TOTAL QUANTITY	CONSTRUCTION TYPE CODE	
				0005	0021
20101700	SUPPLEMENTAL WATERING	UNIT	18	18	
21101615	TOPSOIL FURNISH AND PLACE, 4"	SQ YD	385	385	
25000110	SEEDING, CLASS 1A	ACRE	0.25	0.25	
25000400	NITROGEN FERTILIZER NUTRIENT	POUND	10	10	
25000500	PHOSPHORUS FERTILIZER NUTRIENT	POUND	10	10	
25000600	POTASSIUM FERTILIZER NUTRIENT	POUND	10	10	
25100630	EROSION CONTROL BLANKET	SQ YD	385	385	
28000510	INLET FILTERS	EACH	23	23	
35101600	AGGREGATE BASE COURSE, TYPE B 4"	SQ YD	320		320
35800100	PREPARATION OF BASE	SQ YD	275	275	
35800200	AGGREGATE BASE REPAIR	TON	50	50	
40201000	AGGREGATE FOR TEMPORARY ACCESS	TON	10	10	
40600290	BITUMINOUS MATERIALS (TACK COAT)	POUND	8850	8850	
40600370	LONGITUDINAL JOINT SEALANT	FOOT	3700	3700	
40600400	MIXTURE FOR CRACKS, JOINTS, AND FLANGEWAYS	TON	20	20	
40600982	HOT-MIX ASPHALT SURFACE REMOVAL - BUTT JOINT	SQ YD	315	315	

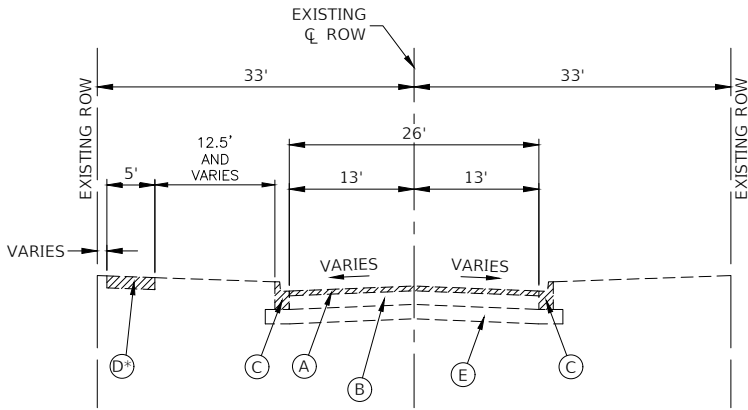
\* SPECIALTY ITEM

				FED 80%	FED 80%
				VILLAGE 20%	VILLAGE 20%
				ROADWAY	SAFETY
CODE NO.	PAY ITEM	UNIT	TOTAL QUANTITY	CONSTRUCTION TYPE CODE	
				0005	0021
40603200	POLYMERIZED HOT-MIX ASPHALT BINDER COURSE, IL-4.75, N50	TON	570	570	
40604060	HOT-MIX ASPHALT SURFACE COURSE, IL-9.5, MIX "D", N50	TON	1135	1135	
42300200	PORTLAND CEMENT CONCRETE DRIVEWAY PAVEMENT, 6 INCH	SQ YD	110	110	
42400200	PORTLAND CEMENT CONCRETE SIDEWALK 5 INCH	SQ FT	2885		2885
42400800	DETECTABLE WARNINGS	SQ FT	230		230
44000157	HOT-MIX ASPHALT SURFACE REMOVAL, 2"	SQ YD	13110	13110	
44000200	DRIVEWAY PAVEMENT REMOVAL	SQ YD	110	110	
44000500	COMBINATION CURB AND GUTTER REMOVAL	FOOT	1250	1250	
44000600	SIDEWALK REMOVAL	SQ FT	2885		2885
44201725	CLASS D PATCHES, TYPE I, 7 INCH	SQ YD	5	5	
44201729	CLASS D PATCHES, TYPE II, 7 INCH	SQ YD	15	15	
44201733	CLASS D PATCHES, TYPE III, 7 INCH	SQ YD	25	25	
44201735	CLASS D PATCHES, TYPE IV, 7 INCH	SQ YD	230	230	
60603800	COMBINATION CONCRETE CURB AND GUTTER, TYPE B-6.12	FOOT	1250	1250	
67100100	MOBILIZATION	L SUM	1	1	
70102620	TRAFFIC CONTROL AND PROTECTION, STANDARD 701501	LSUM	1	1	

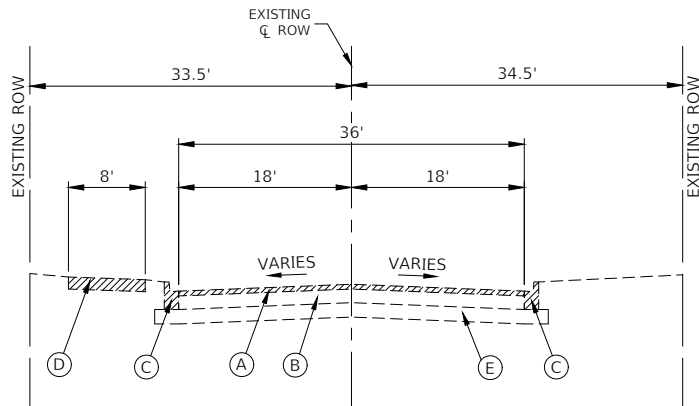
\* SPECIALTY ITEM

				FED 80%	FED 80%
				VILLAGE 20%	VILLAGE 20%
				ROADWAY	SAFETY
CODE NO.	PAY ITEM	UNIT	TOTAL QUANTITY	CONSTRUCTION TYPE CODE	
				0005	0021
70102635	TRAFFIC CONTROL AND PROTECTION, STANDARD 701701	LSUM	1	1	
70102640	TRAFFIC CONTROL AND PROTECTION, STANDARD 701801	L SUM	1	1	
70300100	SHORT TERM PAVEMENT MARKING	FOOT	85		85
70300150	SHORT TERM PAVEMENT MARKING REMOVAL	SQ FT	28		28
* 72000100	SIGN PANEL - TYPE 1	SQ FT	18		18
* 72800100	TELESCOPING STEEL SIGN SUPPORT	FOOT	32		32
* 78000100	THERMOPLASTIC PAVEMENT MARKING - LETTERS AND SYMBOLS	SQ FT	110		110
* 78000200	THERMOPLASTIC PAVEMENT MARKING - LINE 4"	FOOT	5900		5900
* 78000400	THERMOPLASTIC PAVEMENT MARKING - LINE 6"	FOOT	730		730
* 78000600	THERMOPLASTIC PAVEMENT MARKING - LINE 12"	FOOT	120		120
* 78000650	THERMOPLASTIC PAVEMENT MARKING - LINE 24"	FOOT	245		245
* X8860105	DETECTOR LOOP REPLACEMENT	FOOT	250		250
Z0017400	DRAINAGE & UTILITY STRUCTURES TO BE ADJUSTED	EACH	22	22	
Z0017700	DRAINAGE & UTILITY STRUCTURES TO BE RECONSTRUCTED	EACH	1	1	
Z0030850	TEMPORARY INFORMATION SIGNING	SQ FT	25		25

\* SPECIALTY ITEM



**EXISTING TYPICAL SECTION  
HIGHPOINT DRIVE  
STA 30+67.31 TO STA 63+92.22**



**EXISTING TYPICAL SECTION  
HIGHPOINT DRIVE  
STA 26+77.11 TO STA 30+67.31**

**EXISTING LEGEND**

- (A) HOT-MIX ASPHALT SURFACE REMOVAL, 2"
- (B) EXISTING HOT-MIX ASPHALT PAVEMENT (4"-9")
- (C) EXISTING CONCRETE COMBINATION CURB AND GUTTER REMOVAL AT LOCATIONS SHOWN ON THE PLANS OR AS DIRECTED BY THE ENGINEER
- (D) EXISTING SIDEWALK REMOVAL AT LOCATIONS SHOWN ON THE PLANS OR AS DIRECTED BY THE ENGINEER
- (E) EXISTING SUB-BASE (0"-6")
- ITEMS TO BE REMOVED AS DIRECTED BY THE ENGINEER

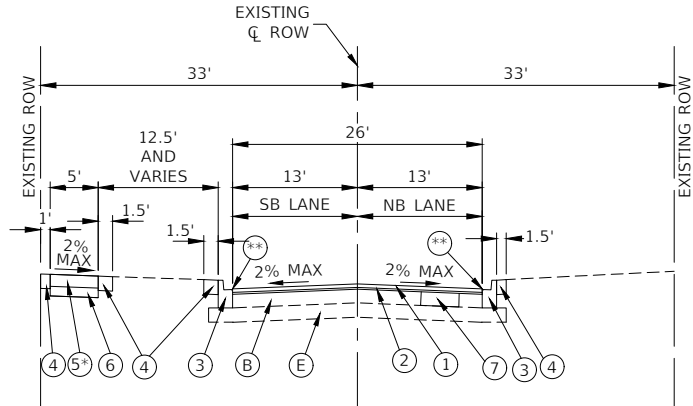
**PROPOSED LEGEND**

- (1) HOT-MIX ASPHALT SURFACE COURSE, IL-9.5, MIX "D", N50, 1 1/2"
- (2) POLYMERIZED HOT-MIX ASPHALT BINDER COURSE, IL-4.75, N50, 3/4"
- (3) PROPOSED COMBINATION CONCRETE CURB AND GUTTER, TYPE B-6.12 AT LOCATIONS SHOWN ON THE PLANS OR AS DIRECTED BY THE ENGINEER.
- (4) TOPSOIL FURNISH AND PLACE 4", SEEDING, CLASS 1A, EROSION CONTROL BLANKET AS INDICATED ON THE PLANS OR AS DIRECTED BY THE ENGINEER
- (5) PORTLAND CEMENT CONCRETE SIDEWALK, 5 INCH
- (6) AGGREGATE BASE COURSE, TYPE B, 4"
- (7) CLASS D PATCHES, 7 INCH, PREPARATION OF BASE, AGGREGATE BASE REPAIR AT LOCATIONS SHOWN ON THE PLANS OR AS DIRECTED BY THE ENGINEER

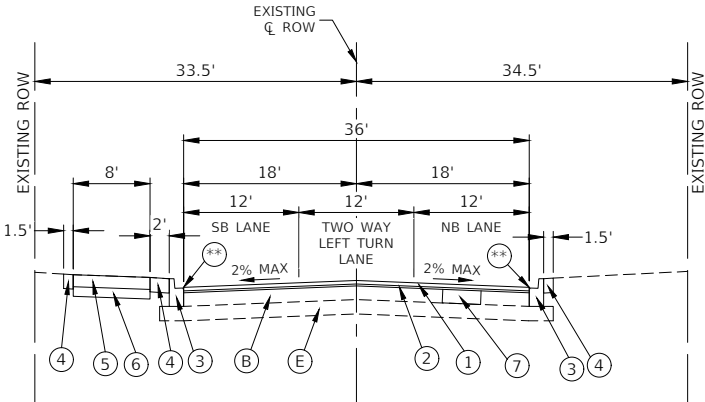
NOTE:  
STA 60+87.00 TO STA 63+92.96 TAPERS TO AN 18' LANDSCAPED MEDIAN WITH 21' OF PAVEMENT ON EACH SIDE OF THE MEDIAN.

\* NO SIDEWALK FROM STA 43+35.98 TO STA 48+82.21

\*\* FINISHED PAVEMENT SURFACE SHALL BE 1/4" ABOVE TOP OF GUTTER



**PROPOSED TYPICAL SECTION  
HIGHPOINT DRIVE  
STA 30+67.31 TO STA 63+92.22**



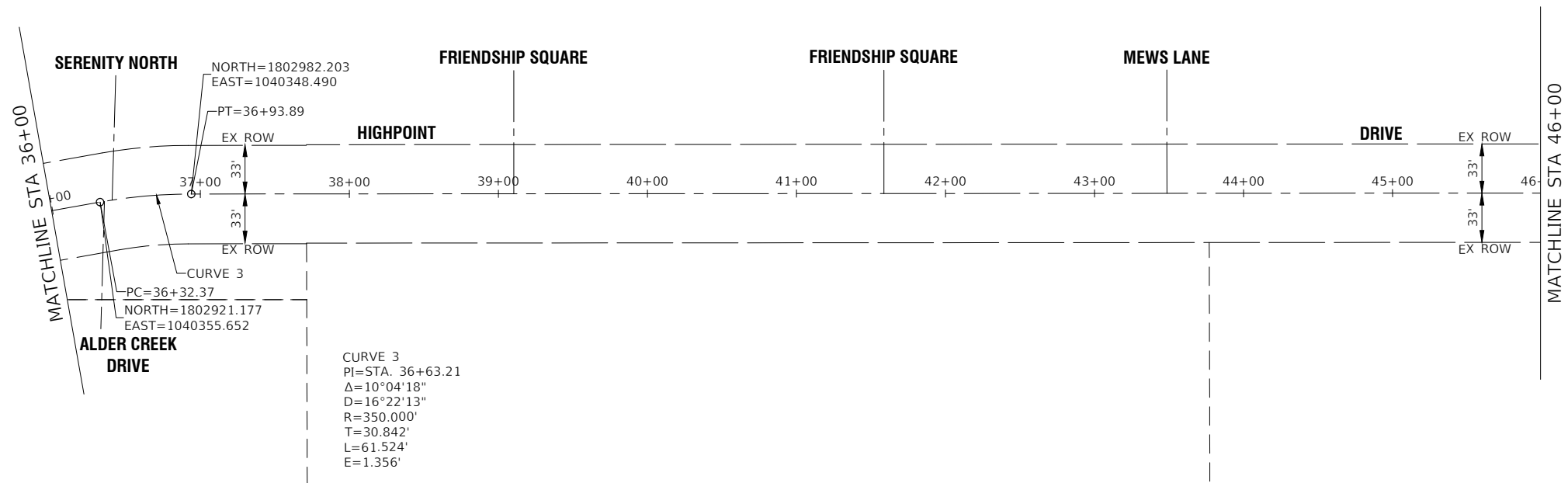
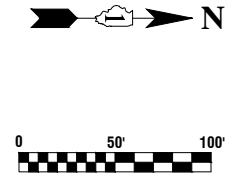
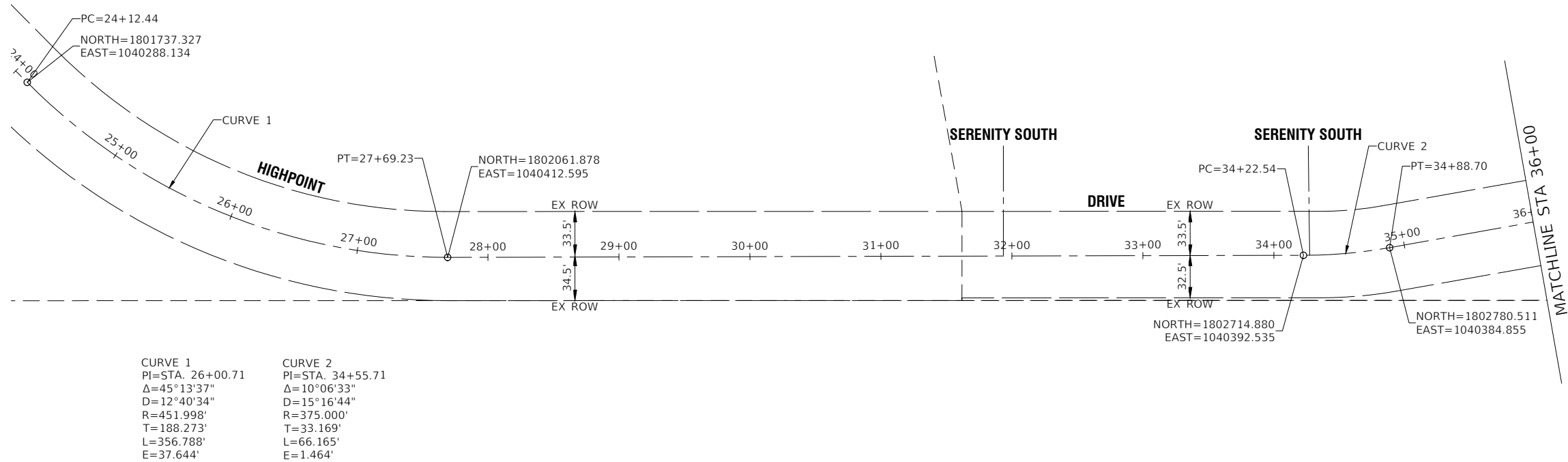
**PROPOSED TYPICAL SECTION  
HIGHPOINT DRIVE  
STA 27+00.00 TO STA 30+68**

**HOT-MIX ASPHALT MIXTURE REQUIREMENTS**

MIXTURE TYPE	AIR VOIDS @ Ndes	QMP
ROADWAY RESURFACING		
HOT-MIX ASPHALT SURFACE COURSE, IL-9.5, MIX "D", N50, 1-1/2"	4% @ 50 Gyr.	LR 1030-2
POLYMERIZED HOT-MIX ASPHALT BINDER COURSE, IL-4.75, N50, 3/4"	3.5% @ 50 Gyr.	LR 1030-2
PATCHING		
CLASS D PATCHES (HMA BINDER IL-19mm)	4% @ 70 Gyr.	LR 1030-2
QMP DESIGNATION: QUALITY CONTROL/QUALITY ASSURANCE (QC/QA) PER LR1030-2		

**NOTES**

- LONGITUDINAL JOINT SEALANT SHALL BE PLACED ON THE POLYMERIZED HOT-MIX ASPHALT BINDER COURSE, IL-4.75, N50.
- ALL PATCHING OPERATIONS SHALL TAKE PLACE AFTER SURFACE MILLING HAS BEEN COMPLETED.
- THE UNIT WEIGHT USED TO CALCULATE ALL HMA SURFACE MIXTURES IS 112 LBS/SQ/IN.
- THE "AC TYPE" FOR POLYMERIZED HMA MIXES SHALL BE "SBS/SBR PG76-22" AND FOR NON-POLYMERIZED HMA THE "AC TYPE" SHALL BE "PG-64-22" UNLESS MODIFIED BY RECLAIMED MATERIALS SPECIFICATIONS.



FILE NAME = 24R0406-TIES-01 - P01

USER NAME	=	DESIGNED	--	WD
		CHECKED	--	----
PLOT SCALE	=	DRAWN	--	DS
PLOT DATE	=	CHECKED	--	AG

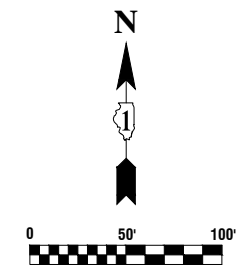
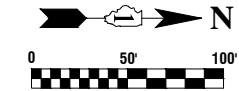
REVISED	--
REVISED	--
REVISED	--
REVISED	--

STATE OF ILLINOIS  
DEPARTMENT OF TRANSPORTATION

HIGHPOINT DRIVE  
ROADWAY RESURFACING  
ALIGNMENT AND TIES

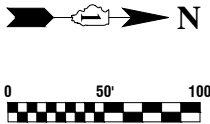
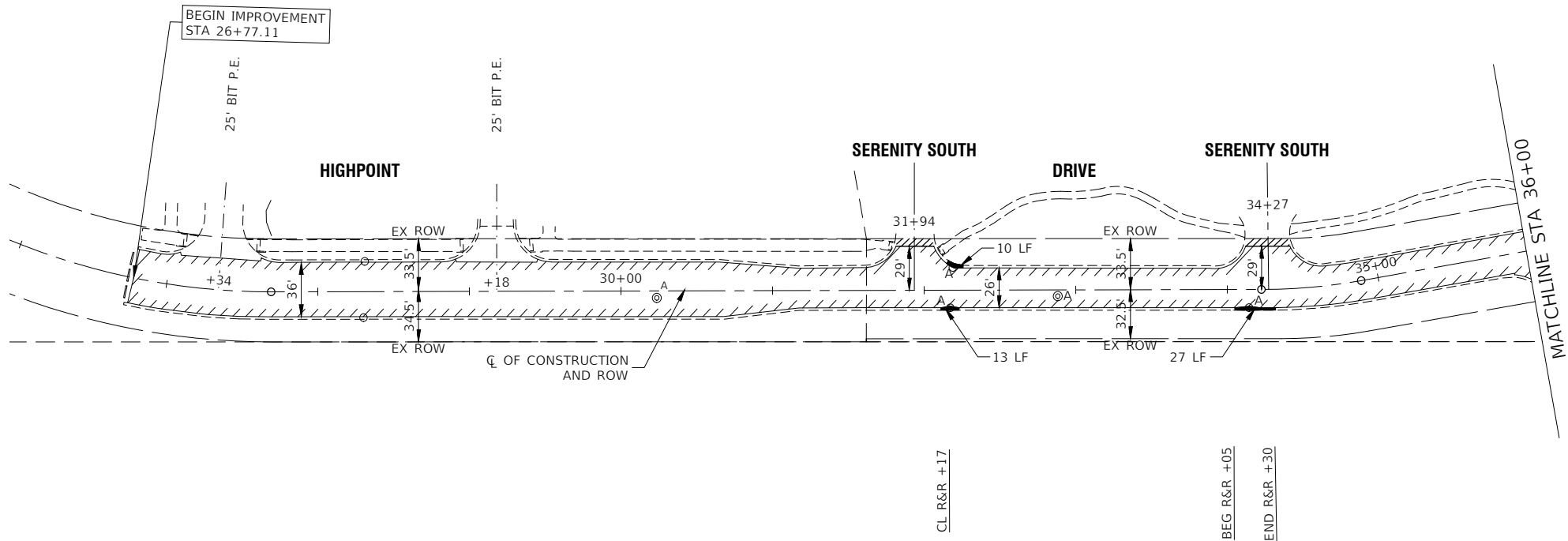
SCALE: 1"=50' SHEET NO. 7 OF 20 SHEETS STA. 26+77.11 TO STA. 46+00

F.A.U. RTE.	SECTION	COUNTY	TOTAL SHEETS	SHEET NO.
0242	24-00078-00-RS	WILL	20	7
CONTRACT NO. 61L13				
FED. ROAD DIST. NO. 1	ILLINOIS	FED. AID PROJECT	V1SZ(169)	



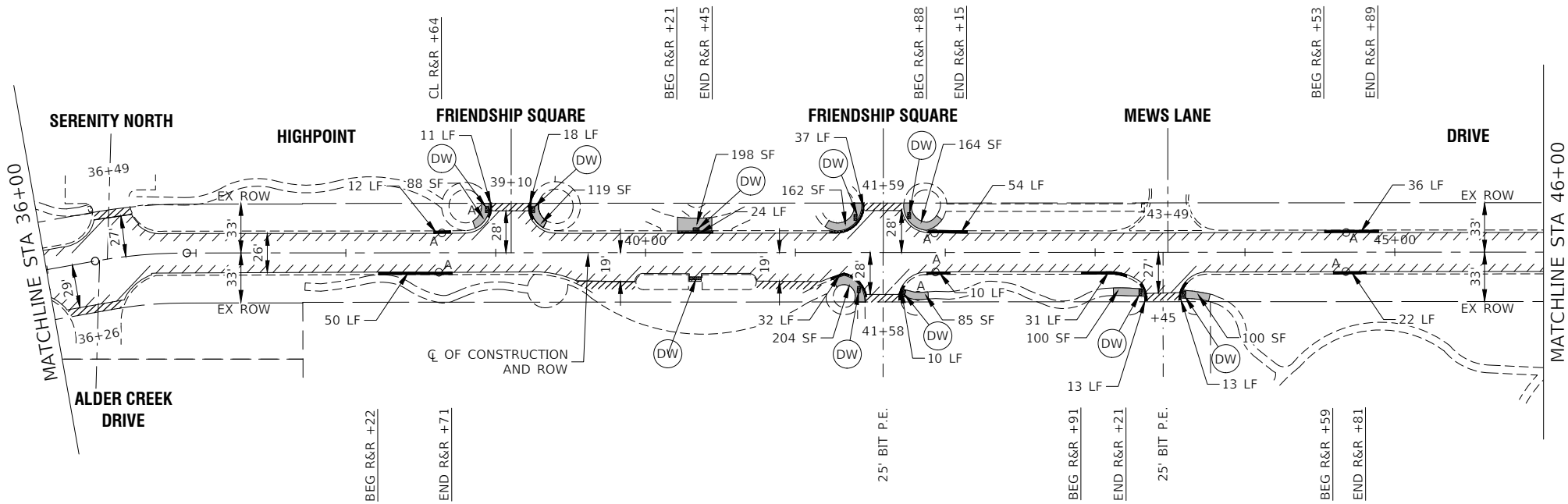
FILE NAME = 24R0406-TIES-01 - P02	USER NAME =	DESIGNED — WD	REVISED —	STATE OF ILLINOIS DEPARTMENT OF TRANSPORTATION	HIGHPOINT DRIVE ROADWAY RESURFACING ALIGNMENT AND TIES				F.A.U RTE.	SECTION	COUNTY	TOTAL SHEETS	SHEET NO.
		CHECKED — ---	REVISED —						0242	24-00078-00-RS	WILL	20	8
	PLOT SCALE =	DRAWN — RG	REVISED —		CONTRACT NO. 61L13								
	PLOT DATE = 12-18-2024	CHECKED — AG	REVISED —										
					SCALE: 1"=50'	SHEET NO. 8	OF 20 SHEETS	STA. 46+00	TO STA. 63+92.22	FED. ROAD DIST. NO. 1	ILLINOIS	FED. AID PROJECT	V1SZ(169)





### LEGEND

- HOT-MIX ASPHALT SURFACE REMOVAL, 2" POLYMERIZED HOT-MIX ASPHALT BINDER COURSE, IL-4.75, N50, 3/4" HOT-MIX ASPHALT SURFACE COURSE, IL-9.5, MIX "D", N50, 1 1/2"
- SIDEWALK REMOVAL  
PCC SIDEWALK 5 INCH (6 INCH THRU DRIVEWAYS)  
AGGREGATE BASE COURSE, TYPE B 4"
- CLASS D PATCHES, 7 INCH  
AGGREGATE BASE REPAIR (AS DIRECTED BY THE ENGINEER)  
PREPARATION OF BASE (AS DIRECTED BY ENGINEER)
- DRIVEWAY PAVEMENT REMOVAL  
PORTLAND CEMENT CONCRETE DRIVEWAY PAVEMENT, 6"
- DETECTABLE WARNINGS
- COMBINATION CURB AND GUTTER REMOVAL  
COMBINATION CONCRETE CURB AND GUTTER, TYPE B-6.12
- "A" DRAINAGE & UTILITY STRUCTURES TO BE ADJUSTED
- "R" DRAINAGE & UTILITY STRUCTURES TO BE RECONSTRUCTED
- EXISTING DETECTOR LOOP
- HMA SURFACE REMOVAL - BUTT JOINT
- BEG R&R +XX BEGIN STATION FOR CURB AND GUTTER REMOVAL AND REPLACEMENT
- END R&R +XX END STATION OF CURB AND GUTTER REMOVAL AND REPLACEMENT
- CL R&R +XX CENTER STATION OF CURB AND GUTTER REMOVAL AND REPLACEMENT (UNDER 20 LINEAL FEET)
- EXISTING ROAD CLOSED SIGN

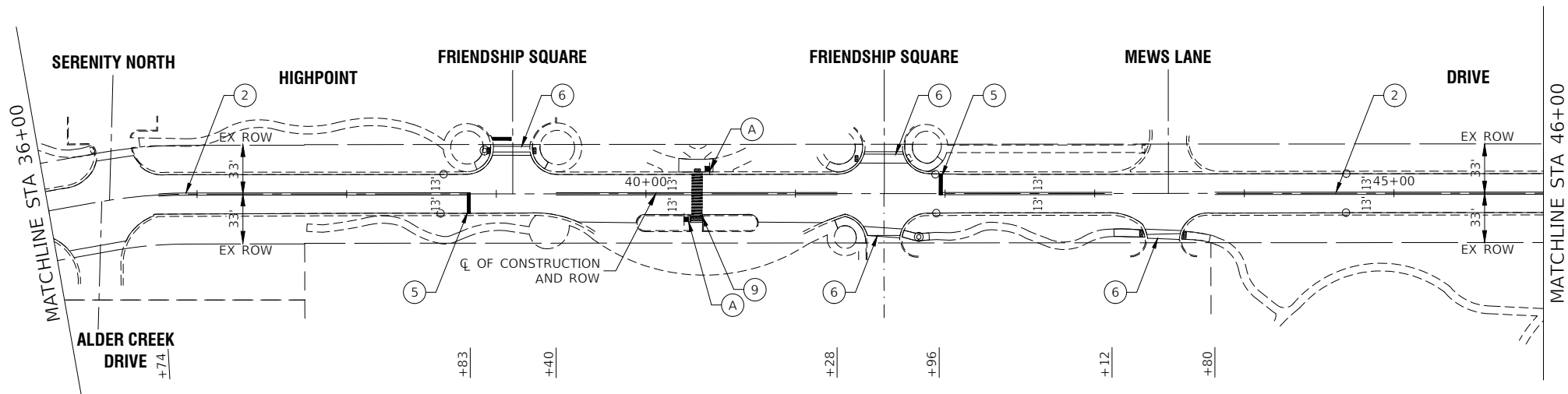
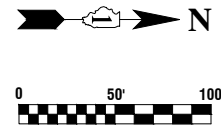
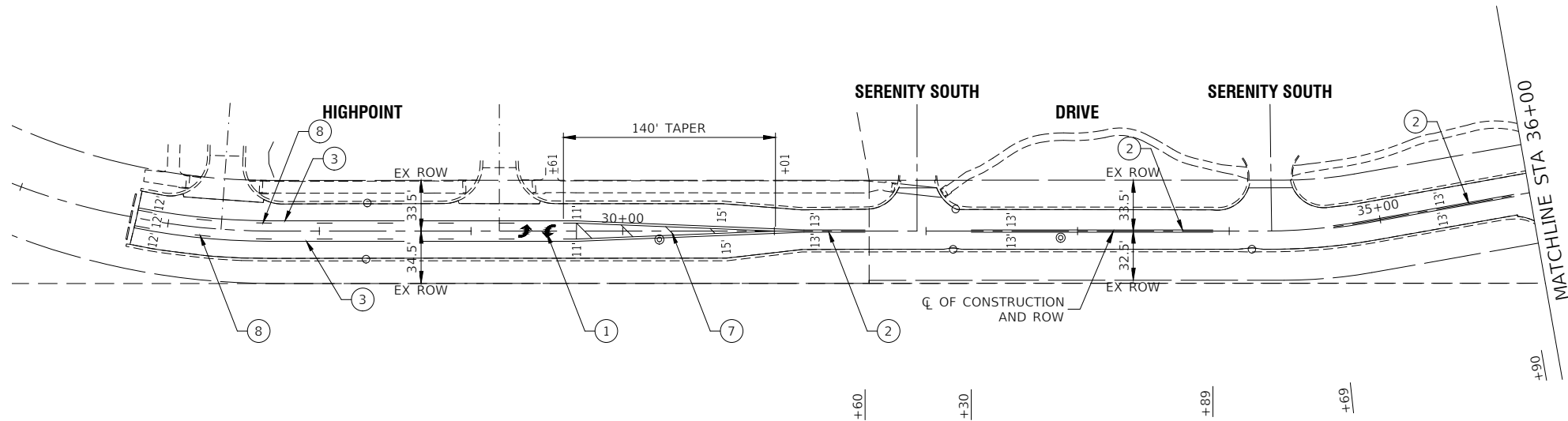


### NOTE:

ALL SIDEWALK RAMPS SHALL BE IN ACCORDANCE WITH THE FOLLOWING HIGHWAY STANDARDS: 424001-12, 424006-06, 424011-05, 424016-06, 424021-07, 424026-04

FILE NAME = 24R0406-PLAN-01 - P01	USER NAME =	DESIGNED — WD	REVISED —	STATE OF ILLINOIS DEPARTMENT OF TRANSPORTATION	HIGHPOINT DRIVE ROADWAY RESURFACING PROPOSED IMPROVEMENT PLAN					F.A.U RTE.	SECTION	COUNTY	TOTAL SHEETS	SHEET NO.
		CHECKED — ----	REVISED —							0242	24-00078-00-RS	WILL	20	9
	PLOT SCALE =	DRAWN — DS	REVISED —		CONTRACT NO. 61L13									
	PLOT DATE = 12-18-2024	CHECKED — AG	REVISED —											
SCALE: 1"=50'				SHEET NO. 9	OF 20	SHEETS	STA. 26+77.11	TO STA. 46+00	FED. ROAD DIST. NO. 1 ILLINOIS FED. AID PROJECT V1SZ(169)					





### PAVEMENT MARKING LEGEND

- ① THERMOPLASTIC PAVEMENT MARKING - WHITE LETTERS & SYMBOLS
- ② THERMOPLASTIC PAVEMENT MARKING - LINE 4" DOUBLE YELLOW LINE (11" C-C)
- ③ THERMOPLASTIC PAVEMENT MARKING - LINE 4" YELLOW
- ④ THERMOPLASTIC PAVEMENT MARKING - LINE 6" WHITE LANE LINE
- ⑤ THERMOPLASTIC PAVEMENT MARKING - LINE 24" WHITE STOP BAR LINE
- ⑥ THERMOPLASTIC PAVEMENT MARKING - LINE 6" WHITE CROSS-WALK (6' C-C)
- ⑦ THERMOPLASTIC PAVEMENT MARKING - LINE 12" YELLOW DIAGONAL LINE (45° ANGLE, 20' C-C)
- ⑧ THERMOPLASTIC PAVEMENT MARKING - LINE 4" YELLOW SKIP DASH (10' LINE-30' SPACE)
- ⑨ THERMOPLASTIC PAVEMENT MARKING - LINE 12" WHITE CROSSWALK (2' C-C)
- DETECTOR LOOP REPLACEMENT

### NOTES

- SEE TC-13 DISTRICT ONE TYPICAL PAVEMENT MARKING FOR GUIDANCE.
- ALL PAVEMENT MARKINGS SHALL BE THERMOPLASTIC UNLESS OTHERWISE SHOWN.
- PROPOSED SIGN POST TYPE SHALL BE TELESCOPING STEEL SIGN SUPPORT.



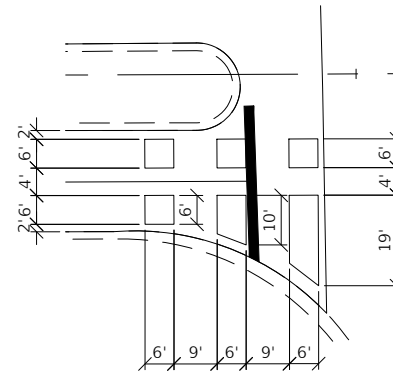
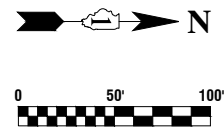
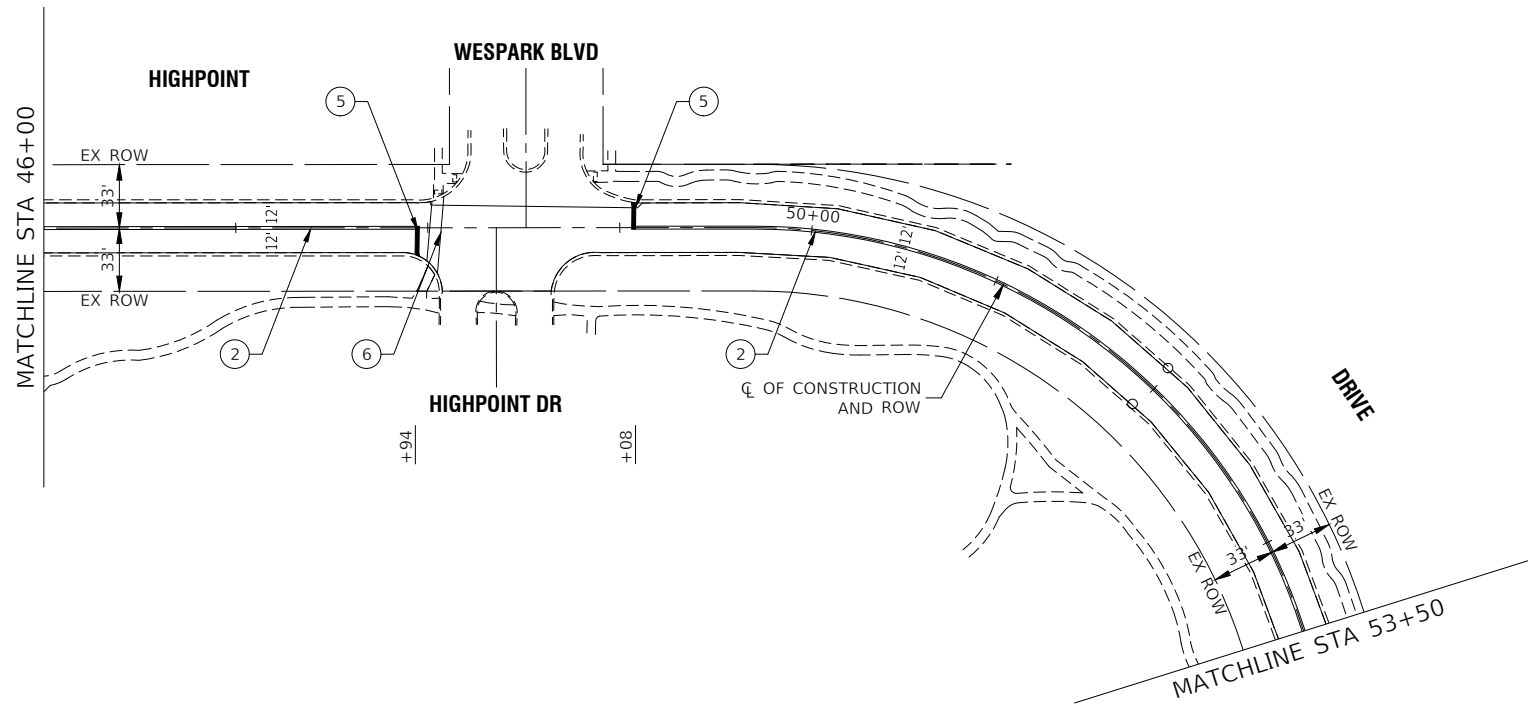
W11-2  
30"X30"



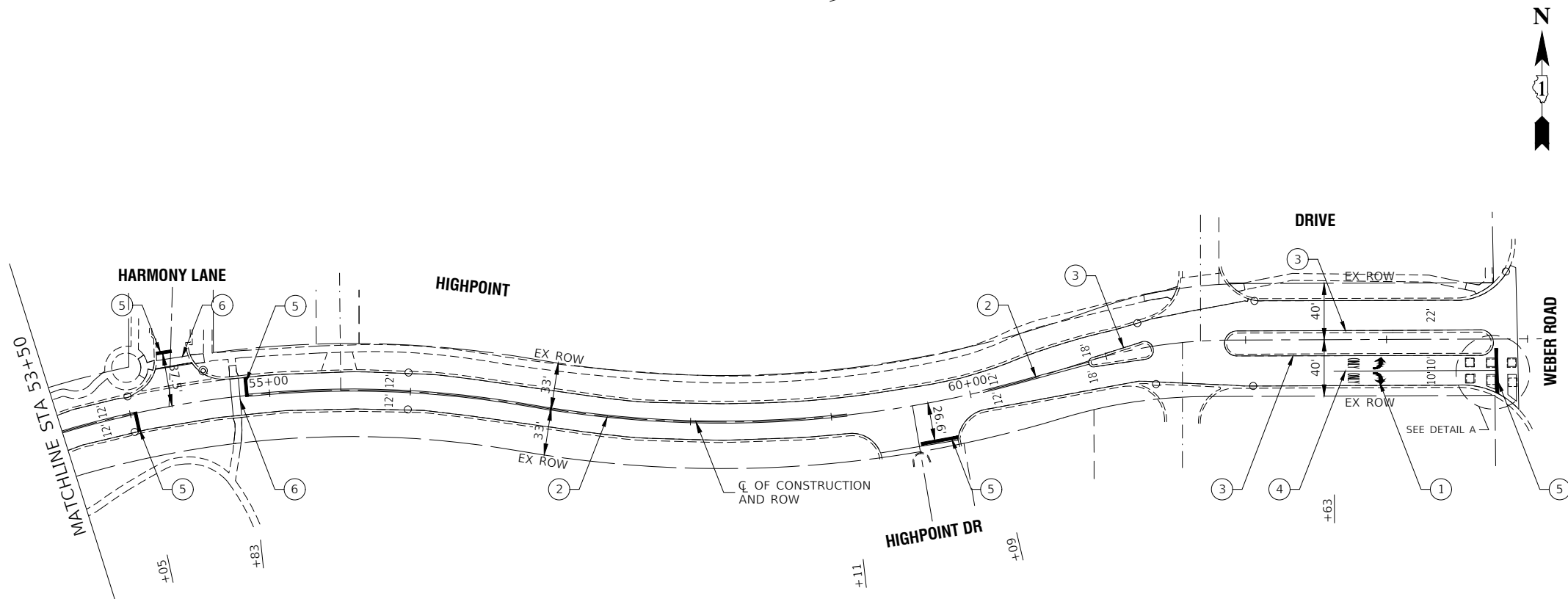
W16-7p  
24"X12"  
15.5' POST

A

FILE NAME = 24R0406-PVMK-01 - P01	USER NAME =	DESIGNED -- WD	REVISED --	STATE OF ILLINOIS DEPARTMENT OF TRANSPORTATION	HIGHPOINT DRIVE ROADWAY RESURFACING PAVEMENT MARKING & SIGNING		F.A.U. RTE.	SECTION	COUNTY	TOTAL SHEETS	SHEET NO.
		CHECKED --	REVISED --				0242	24-00078-00-RS	WILL	20	11
	PLOT SCALE =	DRAWN -- DS	REVISED --				CONTRACT NO. 61L13				
	PLOT DATE = 12-18-2024	CHECKED -- AG	REVISED --				FED. ROAD DIST. NO. 1	ILLINOIS	FED. AID PROJECT	V1SZ(169)	
SCALE: 1"=50'		SHEET NO. 11 OF 20 SHEETS		STA. 26+77.11 TO STA. 46+00							



**DETAIL A**  
DETECTOR LOOP REPLACEMENT DETAIL  
SCALE 1"=20'



W11-2  
30"x30"



W16-7p  
24"x12"  
15.5' POST

A

## PAVEMENT MARKING LEGEND

- 1 THERMOPLASTIC PAVEMENT MARKING - WHITE LETTERS & SYMBOLS
  - 2 THERMOPLASTIC PAVEMENT MARKING - LINE 4" DOUBLE YELLOW LINE (11" C-C)
  - 3 THERMOPLASTIC PAVEMENT MARKING - LINE 4" YELLOW
  - 4 THERMOPLASTIC PAVEMENT MARKING - LINE 6" WHITE LANE LINE
  - 5 THERMOPLASTIC PAVEMENT MARKING - LINE 24" WHITE STOP BAR LINE
  - 6 THERMOPLASTIC PAVEMENT MARKING - LINE 6" WHITE CROSS-WALK (6' C-C)
  - 7 THERMOPLASTIC PAVEMENT MARKING - LINE 12" YELLOW DIAGONAL LINE (45° ANGLE, 20' C-C)
  - 8 THERMOPLASTIC PAVEMENT MARKING - LINE 4" YELLOW SKIP DASH (10' LINE-30' SPACE)
  - 9 THERMOPLASTIC PAVEMENT MARKING - LINE 12" WHITE CROSSWALK (2' C-C)
- DETECTOR LOOP REPLACEMENT

## NOTES

1. SEE TC-13 DISTRICT ONE TYPICAL PAVEMENT MARKING FOR GUIDANCE.
2. ALL PAVEMENT MARKINGS SHALL BE THERMOPLASTIC UNLESS OTHERWISE SHOWN.
3. PROPOSED SIGN POST TYPE SHALL BE TELESCOPING STEEL SIGN SUPPORT.

FILE NAME = 24R0406-PVMK-01 - P02

USER NAME =

DESIGNED -- WD

REVISED --

CHECKED --

---

REVISED --

PLOT SCALE =

DRAWN -- DS

REVISED --

PLOT DATE = 12-18-2024

CHECKED -- AG

REVISED --

STATE OF ILLINOIS  
DEPARTMENT OF TRANSPORTATION

HIGHPOINT DRIVE  
ROADWAY RESURFACING  
PAVEMENT MARKING & SIGNING

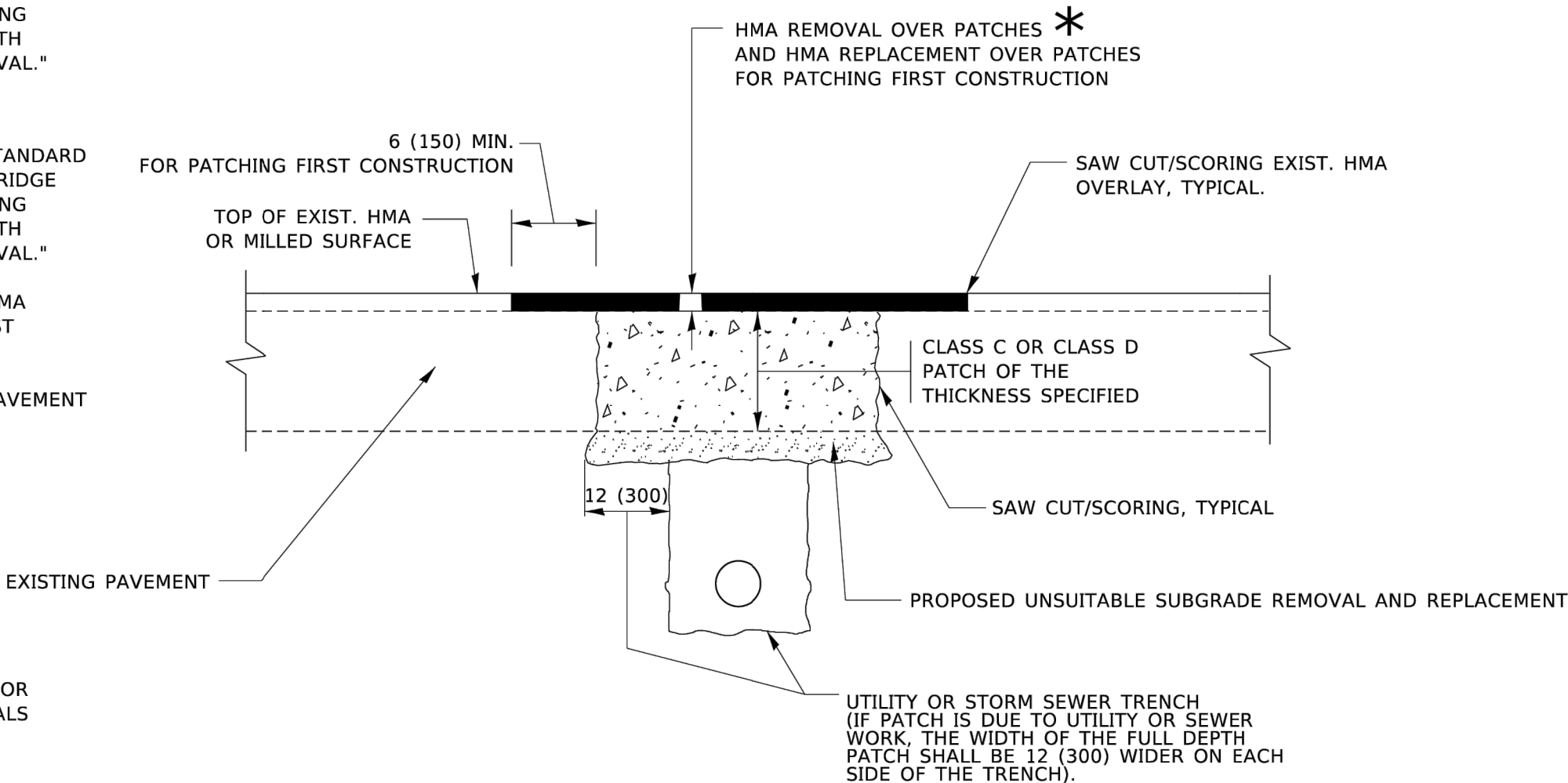
SCALE: 1"=50

METHOD OF MEASUREMENT

REFER TO SECTION 442 OF THE STANDARD SPECIFICATIONS FOR ROAD AND BRIDGE CONSTRUCTION AND THE RECURRING SPECIAL PROVISION "PATCHING WITH HOT-MIX ASPHALT OVERLAY REMOVAL."

BASIS OF PAYMENT

- 1. REFER TO SECTION 442 OF THE STANDARD SPECIFICATIONS FOR ROAD AND BRIDGE CONSTRUCTION AND THE RECURRING SPECIAL PROVISION "PATCHING WITH HOT-MIX ASPHALT OVERLAY REMOVAL."
- 2. SAW CUT/SCORING OF EXISTING HMA OVERLAY IS INCLUDED IN THE COST OF PAVEMENT PATCHING.
- 3. SAW CUT/SCORING OF EXISTING PAVEMENT IS INCLUDED IN THE COST OF PAVEMENT PATCHING.



\* SEE TYPICAL SECTIONS FOR THICKNESS AND MATERIALS

SEQUENCE OF CONSTRUCTION (PATCHING FIRST)

- 1. REMOVE THE EXISTING HMA MATERIAL OVER THE AREA TO BE PATCHED.
- 2. REMOVE AND REPLACE WITH CLASS C OR D PATCH.
- 3. REPLACE HMA MATERIAL OVER THE AREA TO BE PATCHED.

SEQUENCE OF CONSTRUCTION (MILLING FIRST)

- 1. MILL HMA FIRST IF THERE IS AT LEAST 4½ INCHES OR MORE OF HMA MATERIAL ON TOP OF THE EXISTING PAVEMENT OR IF THE PAVEMENT IS FULL DEPTH HMA. A MINIMUM OF 2 INCHES OF HMA MATERIAL SHALL BE IN PLACE AFTER MILLING.
- 2. REMOVE AND REPLACE WITH FULL DEPTH CLASS D PATCHES TO TOP OF MILLED SURFACE.

ALL DIMENSIONS ARE IN INCHES (MILLIMETERS) UNLESS OTHERWISE SHOWN.

	USER NAME = Lawrence.DeManche	DESIGNED - R. SHAH	REVISED - R. BORO 01-01-07	STATE OF ILLINOIS DEPARTMENT OF TRANSPORTATION	PAVEMENT PATCHING FOR HMA SURFACED PAVEMENT				F.A. RTE.	SECTION	COUNTY	TOTAL SHEETS	SHEET NO.	
		DRAWN -	REVISED - R. BORO 09-04-07											
	PLOT SCALE = 100.0000 ' / in.	CHECKED -	REVISED - K. ENG 10-27-08											
	PLOT DATE = 11/18/2022	DATE - 10-25-94	REVISED - K. SMITH 11-18-22											
					SCALE: NONE	SHEET 1	OF 1	SHEETS	STA.	TO STA.	BD400-04 (BD-22)		CONTRACT NO.	
					ILLINOIS FED. AID PROJECT									

FILE NAME = 24R0406-DTSL-01 - BD22	USER NAME =	DESIGNED —	REVISED —	STATE OF ILLINOIS DEPARTMENT OF TRANSPORTATION	CONSTRUCTION DETAILS					F.A.U RTE.	SECTION	COUNTY	TOTAL SHEETS	SHEET NO.
		CHECKED —	REVISED —											
	PLOT SCALE =	DRAWN —	REVISED —							0242	24-00078-00-RS	WILL	20	13
	PLOT DATE =	CHECKED —	REVISED —		CONTRACT NO. 61L13									
						SCALE:	SHEET NO. 13	OF 20	SHEETS	STA.	TO STA.	FED. ROAD DIST. NO. 1	ILLINOIS	FED. AID PROJECT



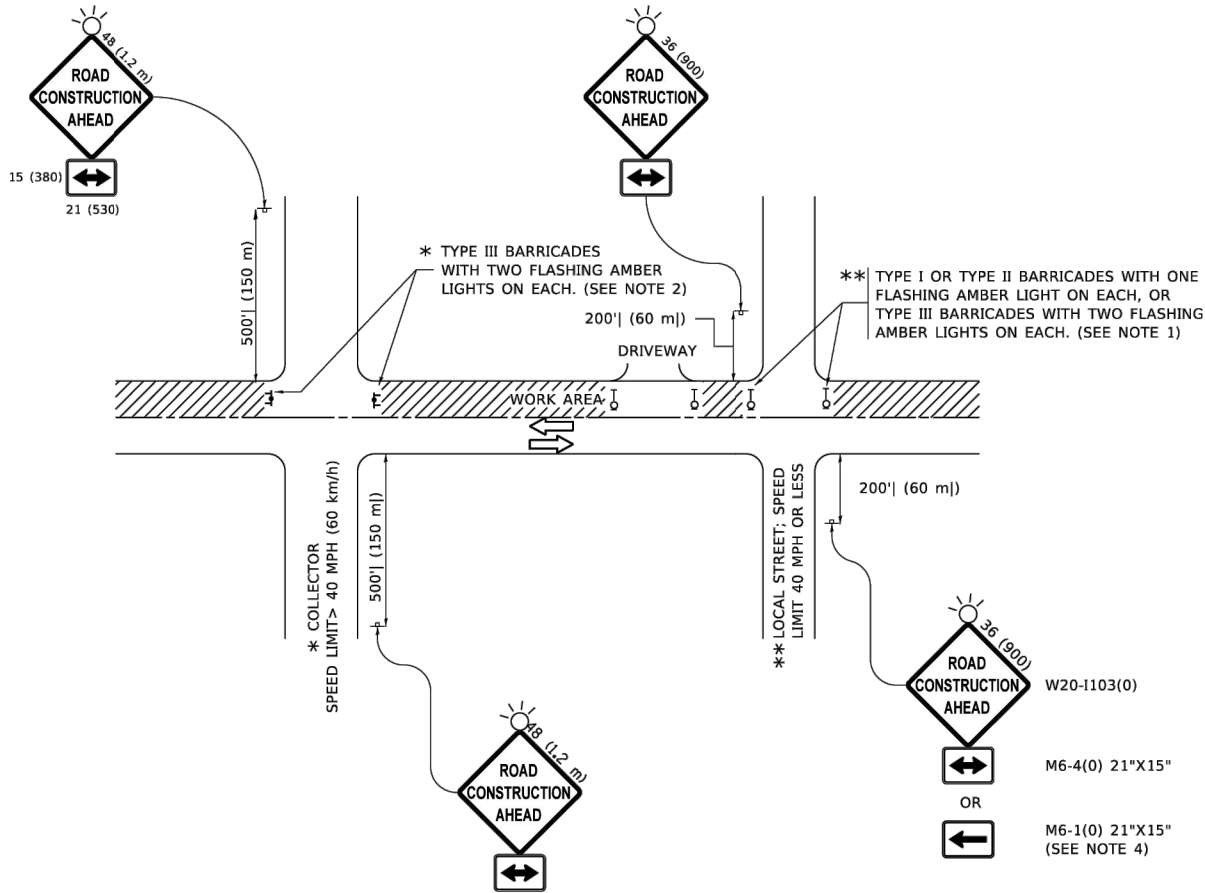
FILE NAME: p:\w\l\dot-aw\_bentley.com\p\w\DOT\Documents\DOT\_Offices\District\_1\Projects\Disis6223\CA\CA\DD\Main\CA\Sheets\TC10.dgn

USER NAME	= Lawrence.DeManche	DESIGNED	- L.H.A.	REVISED	- T. RAMMACHER 01-06-00
		DRAWN	-	REVISED	- A. SCHUETZE 07-01-13
PLOT SCALE	= 100.0000' / in.	CHECKED	-	REVISED	- A. SCHUETZE 09-15-16
PLOT DATE	= 5/3/2024	DATE	- 06-89	REVISED	- D. SENDERAK 05-03-24

STATE OF ILLINOIS  
DEPARTMENT OF TRANSPORTATION

TRAFFIC CONTROL AND PROTECTION FOR  
SIDE ROADS, INTERSECTIONS, AND DRIVEWAYS

F.A. RTE.	SECTION	COUNTY	TOTAL SHEETS	SHEET NO.
TC-10		CONTRACT NO.		
ILLINOIS		FED. AID PROJECT		



NOTES:

- SIDE ROAD WITH A SPEED LIMIT OF 40 MPH (60 km/h) OR LESS AS SHOWN ON THE DRAWING AND AS DIRECTED BY THE ENGINEER:
  - ONE "ROAD CONSTRUCTION AHEAD" SIGN 36 x 36 (900x900) WITH A FLASHER MOUNTED ON IT APPROXIMATELY 200' (60 m) IN ADVANCE OF THE MAIN ROUTE.
  - THE CLOSED PORTION OF THE MAIN ROUTE SHALL BE PROTECTED BY BLOCKING WITH TYPE I, TYPE II OR TYPE III BARRICADES, 1/3 OF THE CROSS SECTION OF THE CLOSED PORTION.
- SIDE ROAD WITH A SPEED LIMIT GREATER THAN 40 MPH (60 km/h) AS SHOWN ON THE DRAWING AND AS DIRECTED BY THE ENGINEER:
  - ONE "ROAD CONSTRUCTION AHEAD" SIGN 48 x 48 (1.2 m x 1.2 m) WITH A FLASHER MOUNTED ON IT APPROXIMATELY 500' (150 m) IN ADVANCE OF THE MAIN ROUTE.
  - THE CLOSED PORTION OF THE MAIN ROUTE SHALL BE PROTECTED BY BLOCKING WITH TYPE III BARRICADES, 1/2 OF THE CROSS SECTION OF THE CLOSED PORTION.
- CONES MAY BE SUBSTITUTED FOR BARRICADES OR DRUMS AT HALF THE SPACING DURING DAY OPERATIONS. CONES SHALL BE A MINIMUM OF 28 (710) IN HEIGHT.
- WHEN THE SIDE ROAD LIES BETWEEN THE BEGINNING OF THE MAINLINE
- SIGNING AND THE WORK ZONE, A SINGLE HEADED ARROW (M6-1) SHALL BE USED IN LIEU OF THE DOUBLE HEADED ARROW (M6-4).
- WHEN WORK IS BEING PERFORMED ON A SIDE ROAD OR DRIVEWAY, FOLLOW THE APPLICABLE STANDARD(S). THE DIRECTIONAL ARROW (M6-1 OR M6-4) SHALL BE COVERED OR REMOVED WHEN NO LONGER CONSISTENT WITH THE TRAFFIC CONTROL SET-UP.
- ADVANCE WARNING SIGNS ARE TO BE OMITTED ON DRIVEWAYS UNLESS OTHERWISE SPECIFIED IN THE PLANS OR BY THE ENGINEER.
- THE TRAFFIC CONTROL AND PROTECTION FOR SIDE ROADS, INTERSECTIONS, AND DRIVEWAYS SHALL BE INCLUDED IN THE COST OF SPECIFIED TRAFFIC CONTROL STANDARDS OR ITEMS.

All dimensions are in inches (millimeters)  
unless otherwise shown.

FILE NAME = 24R0406-DTLS-01 - TC10

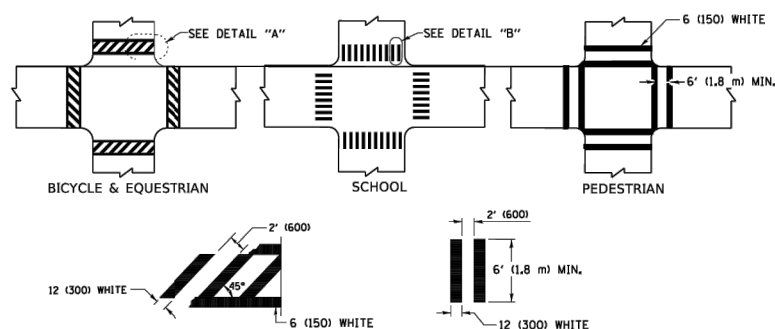
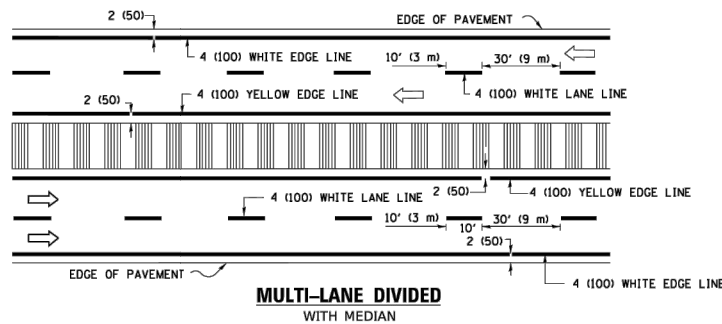
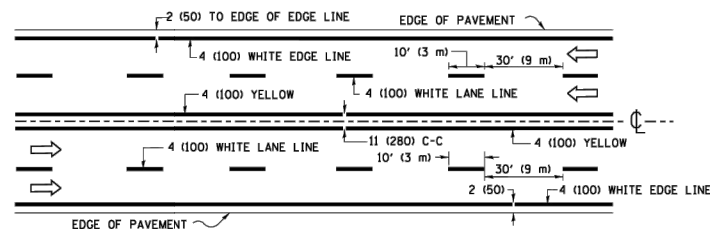
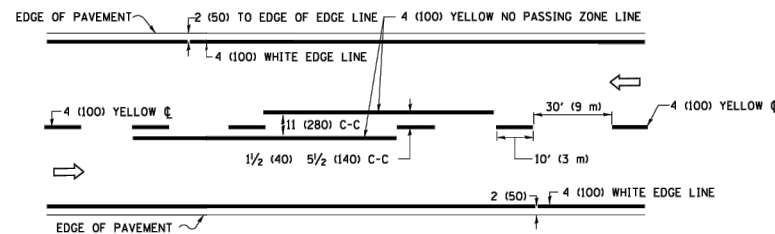
USER NAME	=	DESIGNED	—	REVISED	—
		CHECKED	—	REVISED	—
PLOT SCALE	=	DRAWN	—	REVISED	—
PLOT DATE	=	CHECKED	—	REVISED	—

STATE OF ILLINOIS  
DEPARTMENT OF TRANSPORTATION

CONSTRUCTION DETAILS

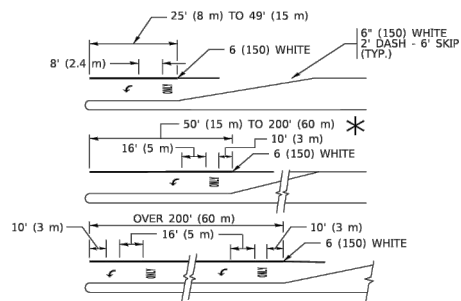
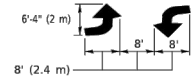
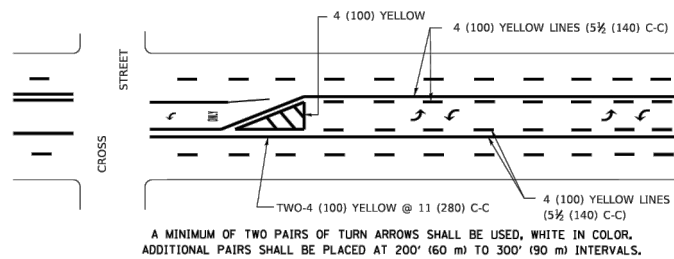
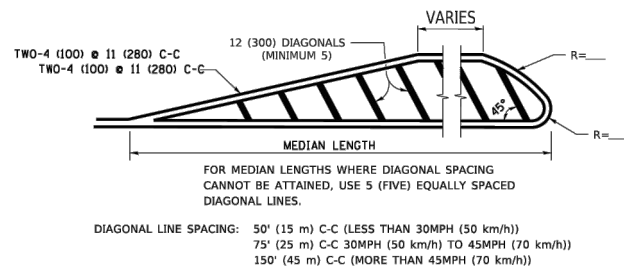
SCALE: SHEET NO. 15 OF 20 SHEETS STA. TO STA.

F.A.U. RTE.	SECTION	COUNTY	TOTAL SHEETS	SHEET NO.
0242	24-00078-00-RS	WILL	20	15
CONTRACT NO. 61L13				
FED. ROAD DIST. NO. 1 ILLINOIS FED. AID PROJECT V1SZ(169)				



\* MARKINGS SHALL BE INSTALLED PARALLEL TO THE CENTERLINE OF THE ROAD WHICH IT CROSSES

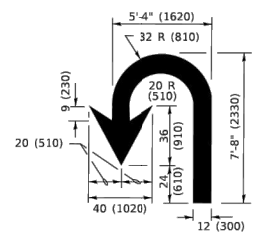
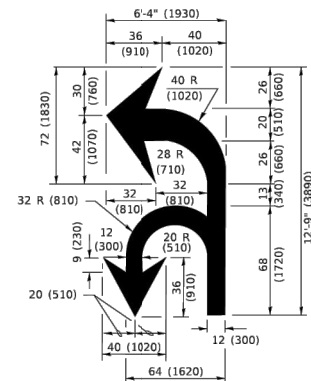
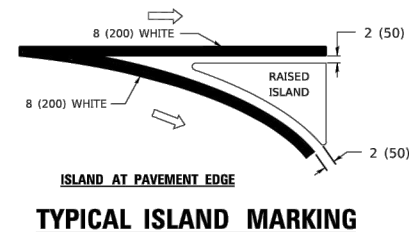
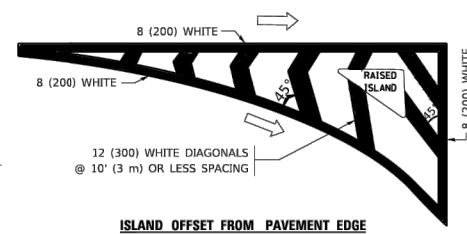
### DETAIL "B"



FULL SIZE LETTERS 8" (2.4 m) AND ARROWS SHALL BE USED.

AREA = 15.6 SQ. FT. (1.5 m<sup>2</sup>) ONLY AREA = 20.8 SQ. FT. (1.9 m<sup>2</sup>)

\* TURN LANES IN EXCESS OF 400' (120 m) IN LENGTH MAY HAVE AN ADDITIONAL SET OF ARROW - "ONLY" INSTALLED MIDWAY BETWEEN THE OTHER TWO SETS OF ARROW - "ONLY".



D(FT)	SPEED LIMIT
345	30
425	35
500	40
580	45
665	50
750	55

TYPE OF MARKING	WIDTH OF LINE	PATTERN	COLOR	SPACING / REMARKS
CENTERLINE ON 2 LANE PAVEMENT	4 (100)	SKIP-DASH	YELLOW	10' (3 m) LINE WITH 30' (9 m) SPACE
CENTERLINE ON MULTI-LANE UNDIVIDED PAVEMENT	2 @ 4 (100)	SOLID	YELLOW	11 (280) C-C
NO PASSING ZONE LINES: FOR ONE DIRECTION FOR BOTH DIRECTIONS	4 (100) 2 @ 4 (100)	SOLID SOLID	YELLOW YELLOW	5½ (140) C-C FROM SKIP-DASH CENTERLINE 11 (280) C-C OMIT SKIP-DASH CENTERLINE BETWEEN
LANE LINES	4 (100) 5 (125) ON FREEWAYS	SKIP-DASH SKIP-DASH	WHITE WHITE	10' (3 m) LINE WITH 30' (9 m) SPACE
DOTTED LINES (EXTENSIONS OF CENTER, LANE OR TURN LANE MARKINGS)	SAME AS LINE BEING EXTENDED	SKIP-DASH	SAME AS LINE BEING EXTENDED	2' (600) LINE WITH 6' (1.8 m) SPACE
EDGE LINES	4 (100)	SOLID	YELLOW-LEFT WHITE-RIGHT	OUTLINE MEDIANS IN YELLOW
TURN LANE MARKINGS	6 (150) LINE; FULL SIZE LETTERS & SYMBOLS (8' (2.4m))	SOLID	WHITE	SEE TYPICAL TURN LANE MARKING DETAIL
TWO WAY LEFT TURN MARKING	2 @ 4 (100) EACH DIRECTION  8' (2.4m) LEFT ARROW	SKIP-DASH AND SOLID IN PAIRS	YELLOW  WHITE	10' (3 m) LINE WITH 30' (9 m) SPACE FOR SKIP-DASH; 5½ (140) C-C BETWEEN SOLID LINE AND SKIP-DASH LINE SEE TYPICAL TWO-WAY LEFT TURN MARKING DETAIL
CROSSWALK LINES (PEDESTRIAN) A. DIAGONALS (BIKE & EQUESTRIAN) B. LONGITUDINAL BARS (SCHOOL)	2 @ 6 (150) 12 (300) @ 45° 12 (300) @ 90°	SOLID SOLID SOLID	WHITE WHITE WHITE	NOT LESS THAN 6' (1.8 m) APART 2' (600) APART 2' (600) APART SEE TYPICAL CROSSWALK MARKING DETAILS.
STOP LINES	24 (600)	SOLID	WHITE	PLACE 4' (1.2 m) IN ADVANCE OF AND PARALLEL TO CROSSWALK, IF PRESENT. OTHERWISE, PLACE AT DESIRED STOPPING POINT, PARALLEL TO CROSSROAD CENTERLINE, WHERE POSSIBLE
PAINTED MEDIANS	2 @ 4 (100) WITH 12 (300) DIAGONALS @ 45° NO DIAGONALS USED FOR 4' (1.2 m) WIDE MEDIANS	SOLID	YELLOW: TWO WAY TRAFFIC WHITE: ONE WAY TRAFFIC	11 (280) C-C FOR THE DOUBLE LINE SEE TYPICAL PAINTED MEDIAN MARKING.
GORE MARKING AND CHANNELIZING LINES	8 (200) WITH 12 (300) DIAGONALS @ 45°	SOLID	WHITE	DIAGONALS: 15' (4.5 m) C-C (LESS THAN 30MPH (50 km/h)) 20' (6 m) C-C 30MPH (50 km/h) TO 45MPH (70 km/h)) 30' (9 m) C-C (OVER 45MPH (70 km/h))
RAILROAD CROSSING	24 (600) TRANSVERSE LINES; "RR" IS 6' (1.8 m) LETTERS; 16 (400) LINE FOR "X"	SOLID	WHITE	SEE STATE STANDARD 780001 AREA OF: "R"=3.6 SQ. FT. (0.33 m <sup>2</sup> EACH "X"=54.0 SQ. FT. (5.0 m <sup>2</sup> )
SHOULDER DIAGONALS (REQUIRED FOR SHOULDERS ≥ 8')	12 (300) @ 45°	SOLID	WHITE - RIGHT YELLOW - LEFT	50' (15 m) C-C (LESS THAN 30MPH (50 km/h)) 75' (23 m) C-C (30 MPH (50 km/h) TO 45MPH (70 km/h)) 150' (45 m) C-C (OVER 45MPH (70 km/h))
U TURN ARROW	SEE DETAIL	SOLID	WHITE	16.3 SF
2 ARROW COMBINATION LEFT AND U TURN	SEE DETAIL	SOLID	WHITE	30.4 SF

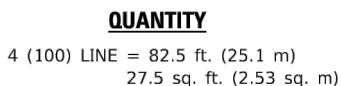
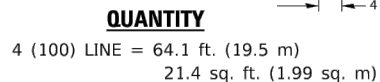
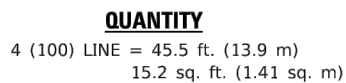
FOR FURTHER DETAILS ON PAVEMENT MARKING REFER TO  
STANDARD SPECIFICATIONS FOR ROAD AND BRIDGE  
CONSTRUCTION AND STATE STANDARD 780001.

All dimensions are in inches (millimeters) unless otherwise shown.

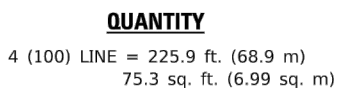
	USER NAME   = footerj	DESIGNED   -   EVERS	REVISED   -   C. JUCIUS 09-09-09	STATE OF ILLINOIS DEPARTMENT OF TRANSPORTATION	DISTRICT ONE TYPICAL PAVEMENT MARKINGS				F.A. RTE.	SECTION	COUNTY	TOTAL SHEETS	SHEET NO.		
		DRAWN    -	REVISED   -   C. JUCIUS 07-01-13												
	PLOT SCALE   = 50.0000 ' / in.	CHECKED   -	REVISED   -   C. JUCIUS 12-21-15												
	PLOT DATE    = 3/4/2019	DATE       -   03-19-90	REVISED   -   C. JUCIUS 04-12-16												
					SCALE: NONE	SHEET   1   OF 2   SHEETS	STA.	TO STA.	TC-13				CONTRACT NO.		
									ILLINOIS					FED. AID PROJECT	

FILE NAME = 24R0406-DTLS-01 - TC13	USER NAME =	DESIGNED —	REVISED —	STATE OF ILLINOIS DEPARTMENT OF TRANSPORTATION	CONSTRUCTION DETAILS					FAU RTE.	SECTION	COUNTY	TOTAL SHEETS	SHEET NO.
		CHECKED —	REVISED —							0242	24-00078-00-RS	WILL	20	16
	PLOT SCALE =	DRAWN —	REVISED —		CONTRACT NO. 61L13									
	PLOT DATE =	CHECKED —	REVISED —		SCALE:	SHEET NO. 16 OF 20 SHEETS	STA.	TO STA.	FED. ROAD DIST. NO. 1	ILLINOIS	FED. AID PROJECT	V1SZ(169)		





ALL QUANTITIES OF PLACEMENT ARE REPRESENTED  
IN LINEAR FEET OF 4" LINES TO MATCH THE  
4" TEMPORARY TAPE PAY ITEM AND REPRESENTS  
THE TOTAL QUANTITY OF 4" TAPE REQUIRED.



All dimensions are in inches (millimeters) unless otherwise shown.

FILE NAME = 24R0406-DTLS-01 - TC16	USER NAME =	DESIGNED —	REVISED —	STATE OF ILLINOIS DEPARTMENT OF TRANSPORTATION	CONSTRUCTION DETAILS	F A U RTE.	SECTION	COUNTY	TOTAL SHEETS	SHEET NO.	
		CHECKED —	REVISED —								
	PLOT SCALE =	DRAWN —	REVISED —								
	PLOT DATE =	CHECKED —	REVISED —								
						SCALE:	SHEET NO. 17 OF 20 SHEETS	STA.	TO STA.	CONTRACT NO. 61L13	
						FED. ROAD DIST. NO. 1	ILLINOIS	FED. AID PROJECT	V1SZ(169)		



NOTES:

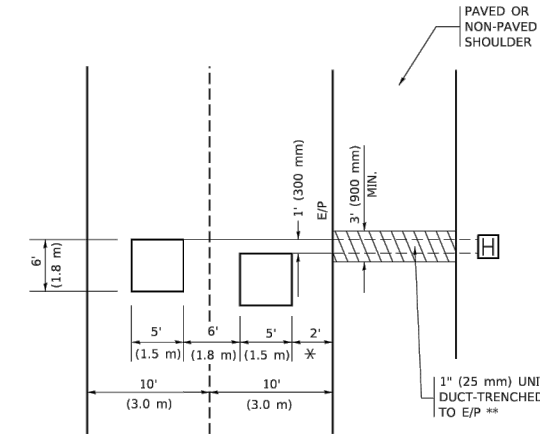
1. HALF OF THE SIGNS WILL REQUIRE A LEFT HAND FACING ARROW.
2. TWO SIGNS SHALL BE USED AT EACH COMMERCIAL ENTRANCE PLACED BACK-TO-BACK: ONE WITH A RIGHT HAND ARROW (SHOWN) SHALL BE PLACED ON THE NEAR RIGHT SIDE THE DRIVEWAY AND ONE WITH A LEFT HAND ARROW SHALL BE PLACED ON THE FAR LEFT SIDE OF THE DRIVEWAY.
3. SIGNS TO BE PAID FOR AS ITEM "TEMPORARY INFORMATION SIGNING".

FILE NAME PROJECT NO.	USER NAME   = lsysa	DESIGNED   -	REVISED   -   C. JUCIUS 02-15-07	STATE OF ILLINOIS DEPARTMENT OF TRANSPORTATION	DRIVEWAY ENTRANCE SIGNING	F.A. RTE.	SECTION	COUNTY	TOTAL SHEETS	SHEET NO.	
		DRAWN    -	REVISED   -								
	PLOT SCALE   = 50.0000 ' / in.	CHECKED   -	REVISED   -			TC-26		CONTRACT NO.			
	PLOT DATE   = 8/6/2021	DATE       -	REVISED   -			SCALE: NONE		SHEET   1	OF   1	SHEETS	STA.                    TO STA.
										ILLINOIS   FED. AID PROJECT	

FILE NAME = 24R0406-DTLS-01 - TC26	USER NAME =	DESIGNED —	REVISED —	STATE OF ILLINOIS DEPARTMENT OF TRANSPORTATION	CONSTRUCTION DETAILS	F.A.U RTE.	SECTION	COUNTY	TOTAL SHEETS	SHEET NO.	
		CHECKED —	REVISED —			0242	24-00078-00-RS	WILL	20	18	
	PLOT SCALE =	DRAWN —	REVISED —			CONTRACT NO. 61L13					
	PLOT DATE =	CHECKED —	REVISED —								
	SCALE:					SHEET NO. 18	OF 20 SHEETS	STA.	TO STA.		
					FED. ROAD DIST. NO.	1	ILLINOIS	FED. AID PROJECT	V1SZ(169)		

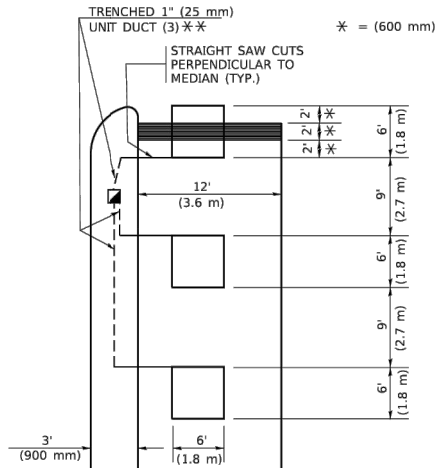


PROVIDE A PAVEMENT REPLACEMENT  
NOTE WHICH SHOULD EQUAL  
3' (900 mm) X WIDTH OF  
PAVED SHOULDER.



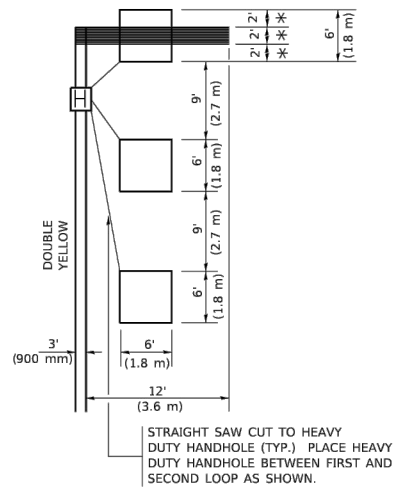
\* \* UNIT DUCT IS TO BE SHOWN ON PLAN SHEETS  
BUT SHALL NOT BE INCLUDED IN THE PAY ITEMS

HANDHOLE LOCATION MAY VARY DEPENDING ON GEOMETRICS AND DESIGN OF TRAFFIC SIGNALS. HEAVY-DUTY HANDHOLES TO BE USED WHEN THE MEDIAN IS MOUNTABLE. REFER TO STANDARD 814001 TO ENSURE THAT HANDHOLE FITS IN MEDIAN.



NOTE: DUAL LEFT TURNS NOT SHOWN REFER TO  
PLAN SHEET FOR DETECTOR LOOP REPLACEMENT

## \* = (600 mm)



NOTE: DUAL LEFT TURNS NOT SHOWN REFER TO  
PLAN SHEET FOR DETECTOR LOOP REPLACEMENT

\* WHEN SYSTEM LOOPS ARE REQUIRED ON AN APPROACH OF AN INTERSECTION, THE LOOPS USED FOR VOLUME DENSITY AND INTERSECTION TIMING SHALL ALSO BE USED AS SYSTEM DETECTORS. EACH ONE OF THESE TYPE OF LOOPS REQUIRES A SEPARATE TWO CONDUCTOR NO. 14 TWISTED SHIELDED CABLE AND A SEPARATE INDUCTIVE LOOP DETECTOR WHEN NEW CONTROLLERS ARE UTILIZED. THE DESIGNER SHALL LABEL THESE TYPES OF LOOPS AS "INTERSECTION AND SAMPLING (SYSTEM) DETECTORS" ON THE SIGNAL LAYOUT, THE INTERCONNECT PLAN AND THE SYSTEM CABLE PLAN. WHEN AN EXISTING CONTROLLER IS UTILIZED FOR THIS TYPE OF DETECTION, THE PAY ITEM "INDUCTIVE LOOP DETECTOR WITH SYSTEM OUTPUT" SHOULD BE USED.

"FAR OUT" DETECTION REFERS TO LOCKING, PRESENCE TYPE DETECTION LOCATED IN THRU LANES, RIGHT TURN LANES, AND RIGHT TURN LANE TAPER AREAS (IF APPLICABLE), USUALLY 250' (75 m) IN ADVANCE OF STOP BARS. "TIGHT" DETECTION REFERS TO NON-LOCKING PRESENCE TYPE DETECTION LOCATED IN ALL LANES AND 10'-15' (3.0 m-4.5 m) BEHIND THE CROSSING STREET'S EDGE OF PAVEMENT EXTENDED.

ALL DETAILS AND NOTES SHOWN ARE FROM THE I.D.O.T. DISTRICT 1  
TRAFFIC SIGNAL DESIGN GUIDELINES DATED JANUARY 1995

THIS DRAWING HAS BEEN PREPARED TO ASSIST THE RESIDENT ENGINEER  
FOR ALL ROADWAY RESURFACING OR S.M.A.R.T. PROJECTS WHERE THE  
DIMENSIONS ARE NOT SHOWN ON THE PLANS AND THE FINAL LOCATIONS  
FOR CROSSWALKS OR STOP BARS ARE NOT DETERMINED.

USER NAME	= footemj
PLOT SCALE	= 50.0000 ' /
PLOT DATE	= 3/4/2019

OFFSET LOOPS BY  
1' (300mm) FOR  
STRAIGHT SAW CUTS

THIS DIMENSION MAY BE  
ADJUSTED FOR DRIVEWAY  
OR OTHER OBSTRUCTIONS.  
WHEN ADJUSTMENT IS  
REQUIRED, DETECTORS WILL  
NORMALLY BE MOVED CLOSER  
TO THE INTERSECTION.

\* = (1.8m)

CROSS STREET

250' (75m)

ARTERIAL

3' (900mm)  
1' (25 mm)  
UNIT DUCT  
(TYP.)  
i3' (900mm)  
12' (3.6m)  
900mm 3' (3.6m)  
900mm 3' (3.6m)  
6' 9' 6' 9'  
(2.7m) (2.7m)

11' (3.3m)  
6' 6' 9' 6'  
6' 6' 9' 6'  
11' (3.3m)  
2' (600mm)  
10' (3.0m) PREFERRED  
15' (4.5m) MAXIMUM  
3' (900mm)

+ - THESE DIMENSIONS  
WILL BE VARIABLE  
[6' (1.8m) MINIMUM,  
25' (7.6 m) MAXIMUM]

- THESE DIMENSIONS  
SHALL BE 5' (1.5m) FOR  
10' (3.0m) LANE WIDTHS

DRIVEWAY

IF "FAR OUT" LOOPS  
ARE LOCATED IN  
TAPER OF A RIGHT  
TURN LANE, DIMENS  
THIS LOOP TO COVER  
TAPER AREA. DO NOT  
COVER THE LEFT TU  
LANE TAPER.

### DETAIL 2

**STATE OF**  
**DEPARTMENT OF**

	USER NAME = footemj	DESIGNED -	REVISED -	STATE OF ILLINOIS DEPARTMENT OF TRANSPORTATION	DISTRICT 1 – DETECTOR LOOP INSTALLATION DETAILS FOR ROADWAY RESURFACING				F.A. RTE.	SECTION	COUNTY	TOTAL SHEETS	SHEET NO.	
		DRAWN -	REVISED -											
	PLOT SCALE = 50.0000 ' / in.	CHECKED - R.K.F.	REVISED -			SCALE: NONE		SHEET 1 OF 1 SHEETS	STA. TO STA.	TS-07 CONTRACT NO. ILLINOIS FED. AID PROJECT				
	PLOT DATE = 3/4/2019	DATE -	REVISED -											

FILE NAME = 24R0406-DTLS-01 - TS07	USER NAME =	DESIGNED —	REVISED —	STATE OF ILLINOIS DEPARTMENT OF TRANSPORTATION	CONSTRUCTION DETAILS								F.A.U RTE.	SECTION	COUNTY	TOTAL SHEETS	SHEET NO.				
		CHECKED —	REVISED —										0242	24-00078-00-RS	WILL	20	20				
	PLOT SCALE =	DRAWN —	REVISED —																		
	PLOT DATE =	CHECKED —	REVISED —																		
					SCALE:								SHEET NO. 20 OF 20 SHEETS		STA.		TO STA.		FED. ROAD DIST. NO. 1 ILLINOIS FED. AID PROJECT V1SZ(169)		
												CONTRACT NO. 61L13									