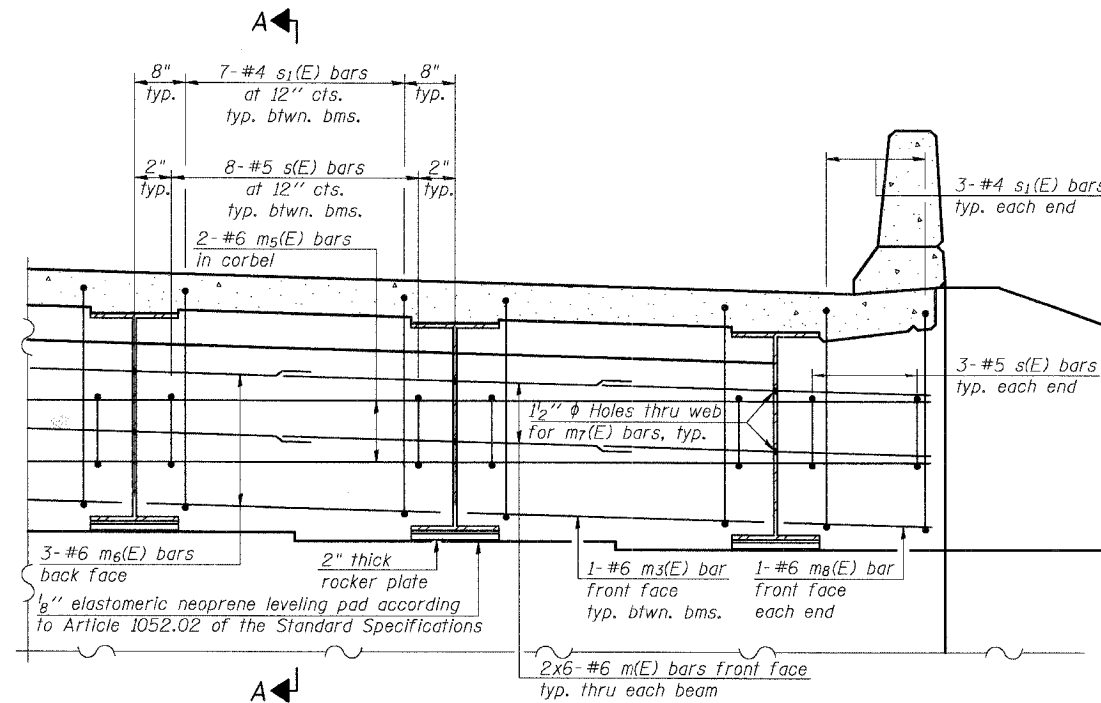


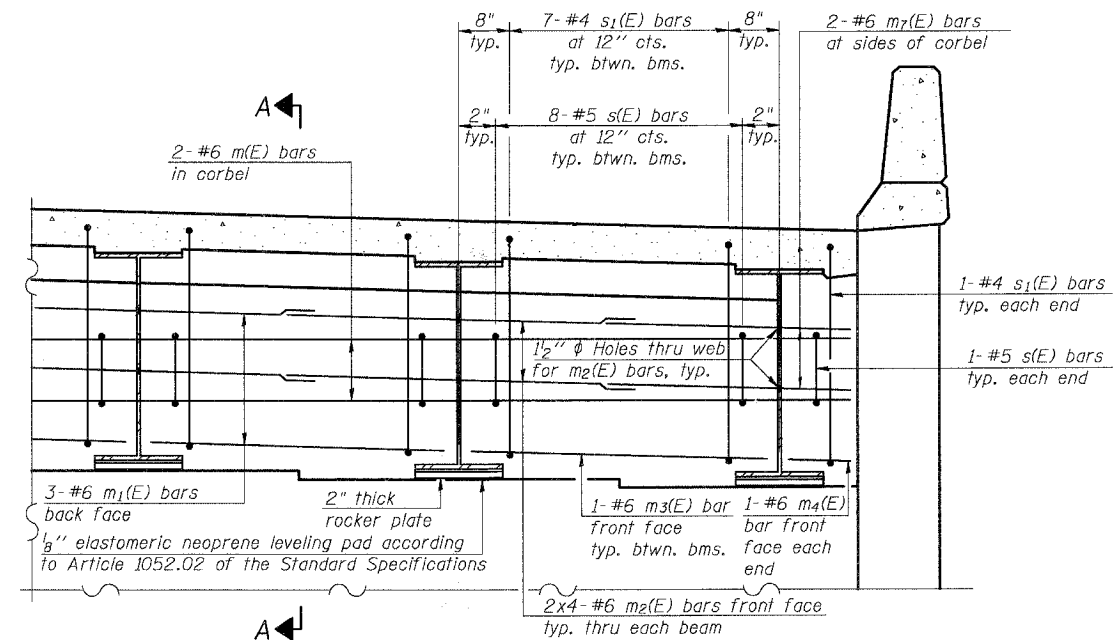
ROUTE NO.	SECTION	COUNTY	TOTAL SHEETS	"SET"
FAU 2830	01-00133-08-BR	WILL	37	19
FED. ROAD DIST. NO.	ILLINOIS	FED. AID PROJECT		

SHEET NO. S-8
S-19 SHEETS

Contract #83989



DIAPHRAGM ELEVATION AT NORTH ABUTMENT

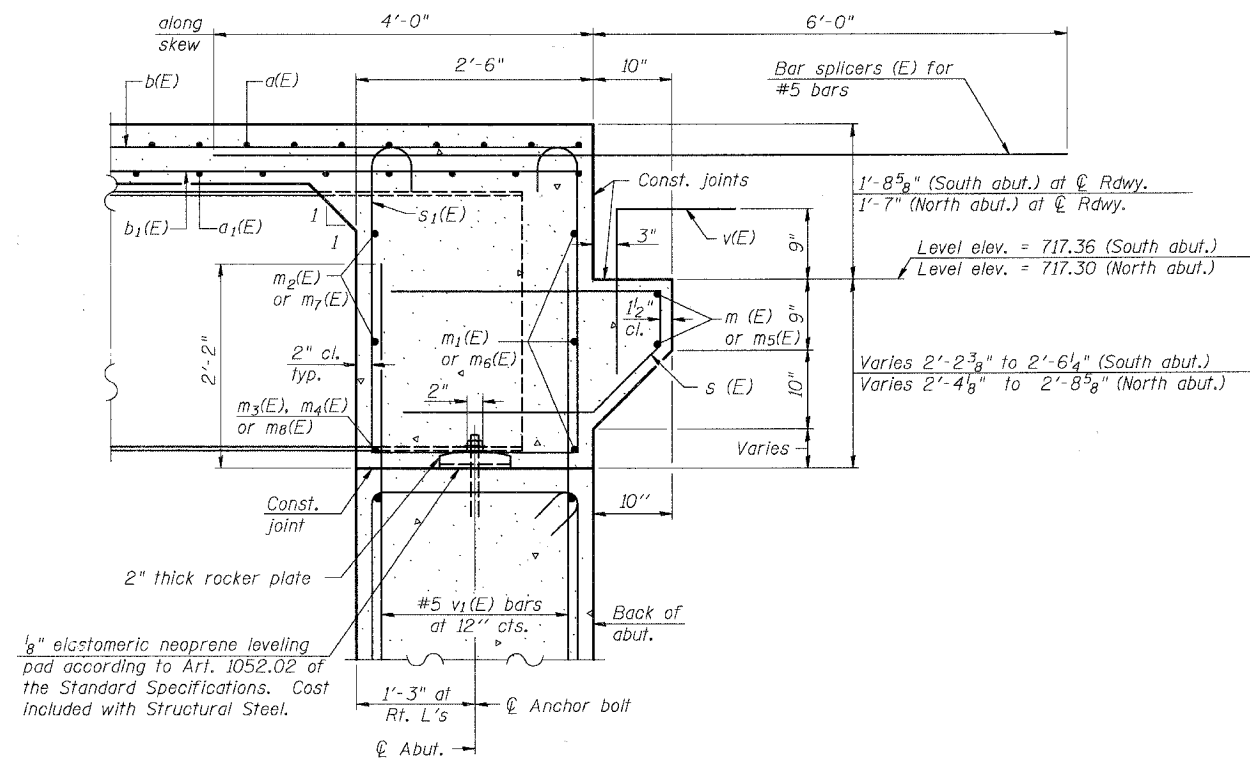


DIAPHRAGM ELEVATION AT SOUTH ABUTMENT

Notes:

Reinforcement bars in diaphragm are billed with superstructure on sheet S-6.
Concrete in diaphragm is included with Concrete Superstructure on sheet S-6.
For details of bars s(E) and s1(E) see sheet S-6.
The s(E) and s1(E) bars shall be placed parallel to the beams.
Spacing for these bars shall be at right angles to the beams.

MIN. BAR LAP
#6 bar = 2'-9"



SECTION A-A

Dimensions at right angles to abutment, except as shown.

DESIGNED	AEU
CHECKED	RGD
DRAWN	WJH
CHECKED	AEU

ILLINOIS PROFESSIONAL DESIGN FIRM # 184-000108
SEC GROUP, INC.
Smith Engineering Consultants • SEC Automation • SEC Planning
4500 Prime Parkway, McHenry, IL 60050
L 815.385.1778 F 815.385.1781
www.secgroupinc.com

ILLINOIS DEPARTMENT OF TRANSPORTATION

DIAPHRAGM DETAILS
OLD MONEE ROAD (COUNTY HIGHWAY 48)
OVER THORN CREEK
WILL COUNTY
SECTION NO. 01-00133-08-BR
STRUCTURE NO. 099-3379

DATE: 11-26-2007