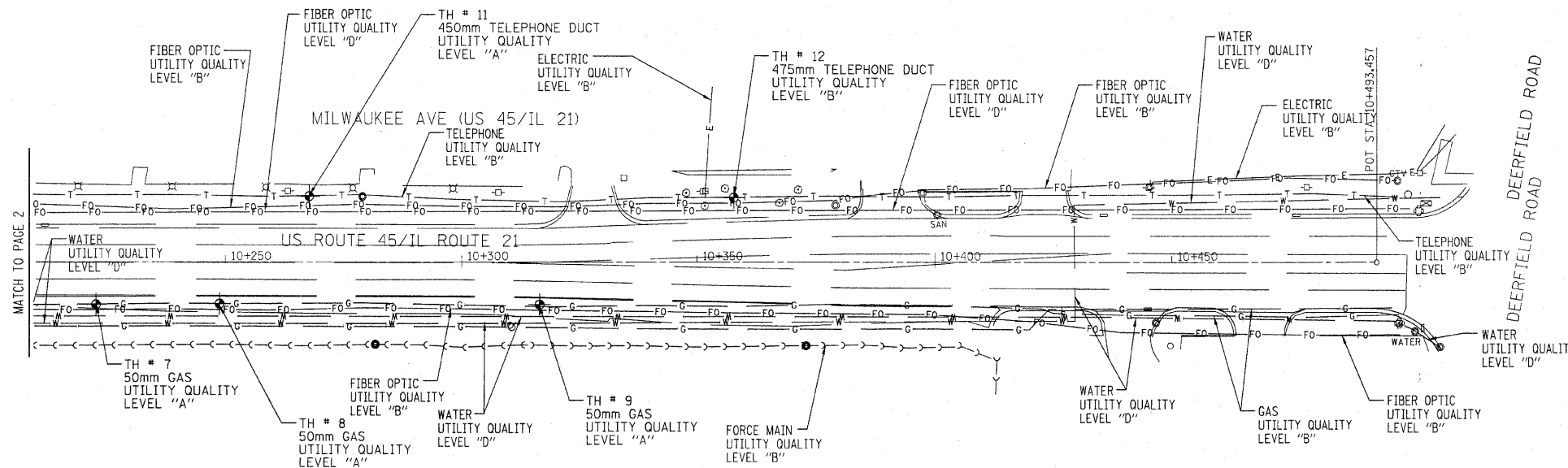
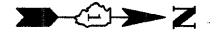


F.A. RTE.	SECTION	COUNTY	TOTAL SHEETS	SHEET NO.
	1Y-B-R-1	Lake	121	42
STA.		TO STA.		
FED. ROAD DIST. NO.		ILLINOIS	FED. AID PROJECT	

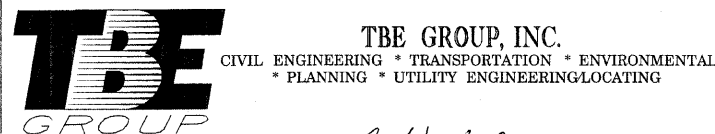


ALL UTILITIES QUALITY LEVEL "B" UNLESS NOTED OTHERWISE.

SCALE 1:500

The AT&T locations depicted have been obtained through the application of geophysical methods to determine the existence and approximate horizontal position of these facilities. However, AT&T will not provide TBE Group, Inc. with utility records nor allow access to their field closures (pedestals/manholes etc.), to help verify the locations of their existing underground facilities. Therefore, TBE is unable to verify the completeness of the AT&T locations depicted in accordance with the CI/ASCE Standard 38-02.

The field representative from Adesta that was on-site would not provide or allow TBE Group, Inc. access to their field enclosures (Pedestals/Manholes etc.) to help verify the location of the underground fiber optic cable within the project limits. Therefore, TBE is unable to verify the location of the fiber optic cable and labeled the utility as Quality Level "D".



**TBE GROUP, INC.**

CIVIL ENGINEERING \* TRANSPORTATION \* ENVIRONMENTAL  
\* PLANNING \* UTILITY ENGINEERING/LOCATING

IL09500177, 277, 282

TBE PAGE NO: 3 of 3

Checked by: *[Signature]*  
Utility Quality Level "A" : Test Hole  
Utility Quality Level "B" : Designating  
Utility Quality Level "D" : Records Research

— W —	— WATER
— CTV —	— CABLE TV
— T —	— TELEPHONE
— S —	— SEWER
— G —	— GAS
— FO —	— FIBER OPTIC
— E —	— ELECTRIC

Utilities shown in color on these plans as depicted in the legend have been investigated by TBE Group, Inc in accordance with SUE Industry Standards. All other information shown has been provided to TBE Group, Inc by others. TBE's SUE field designating was performed during the period 6-07-07 through 6-28-07. Test Holes were performed during the period 12-20-07 through 1-18-08. Changes to utilities after these dates may have been made and therefore may result in variances from this plan. Consideration should be given to updating this plan if deemed advisable prior to final design and construction.

Rev. 2-22-08

205 W. WACKER DRIVE  
SUITE 1020  
CHICAGO, IL 60606  
(312) 704-1970

REVISIONS	
NAME	DATE

ILLINOIS DEPARTMENT OF TRANSPORTATION  
SUE Investigation of Underground Utilities  
US 45/IL RT. 21 over Aptakisic Creek  
Buffalo Grove, IL.  
Lake County  
Contract No. 62032  
Section No. 1Y-B-R-1  
DRAWN BY : KLC  
SCALE : 1 : 600