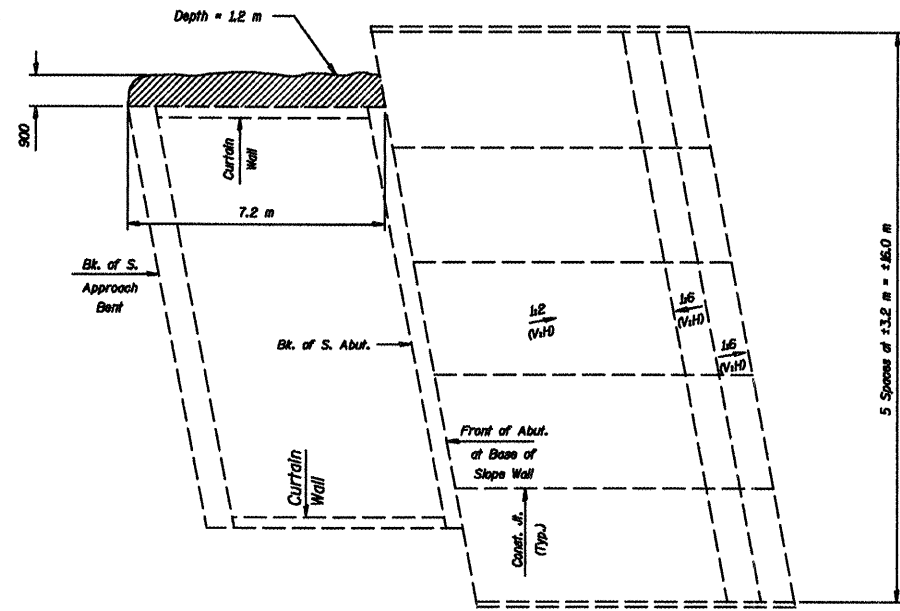
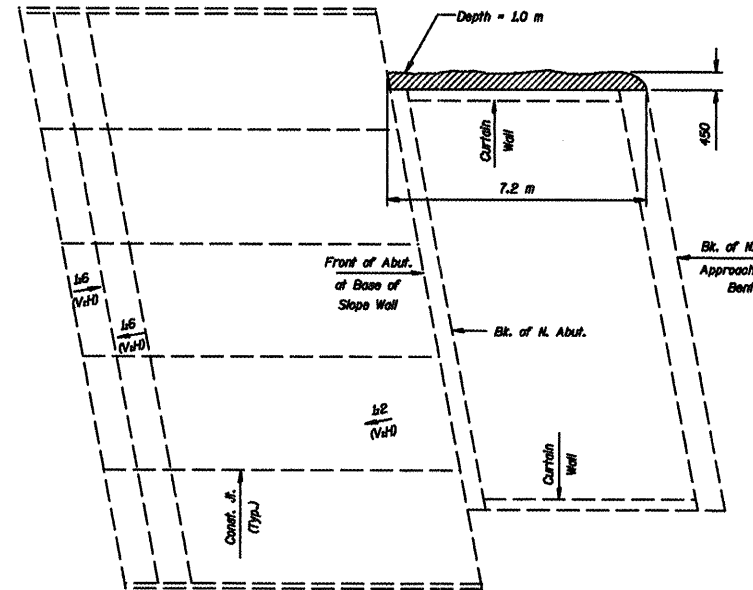


STATE NO.	DISTRICT	COUNTY	SECTION	SHEET NO.
FAI 55	*	McLEAN	70	37
FED. ROAD DIST. NO. 7		BILLBOARD		FED. ROAD PROJECT
* 1157-41HBR-5&VBR-11&57-2HB-1				

SHEET NO. 3  
3 SHEETS



S. ABUT. AND SLOPE WALL PLAN

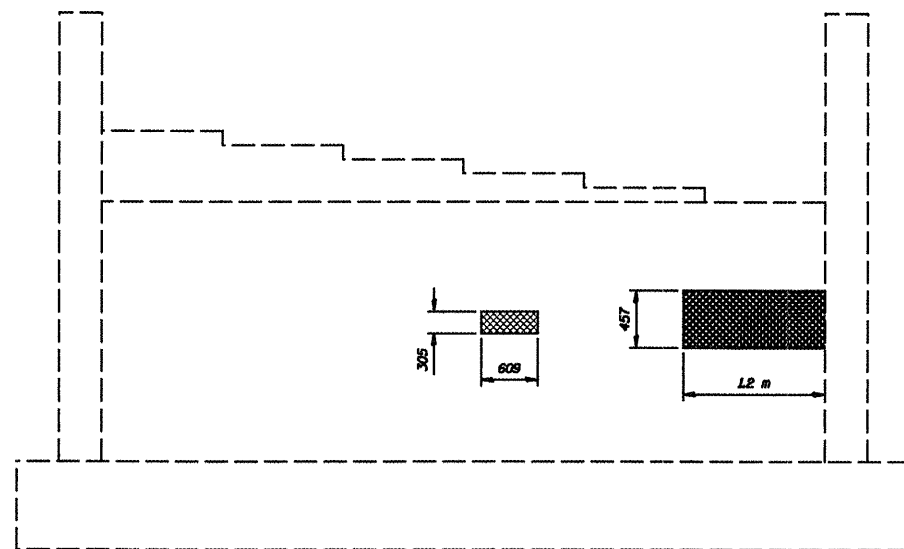


N. ABUT. AND SLOPE WALL PLAN

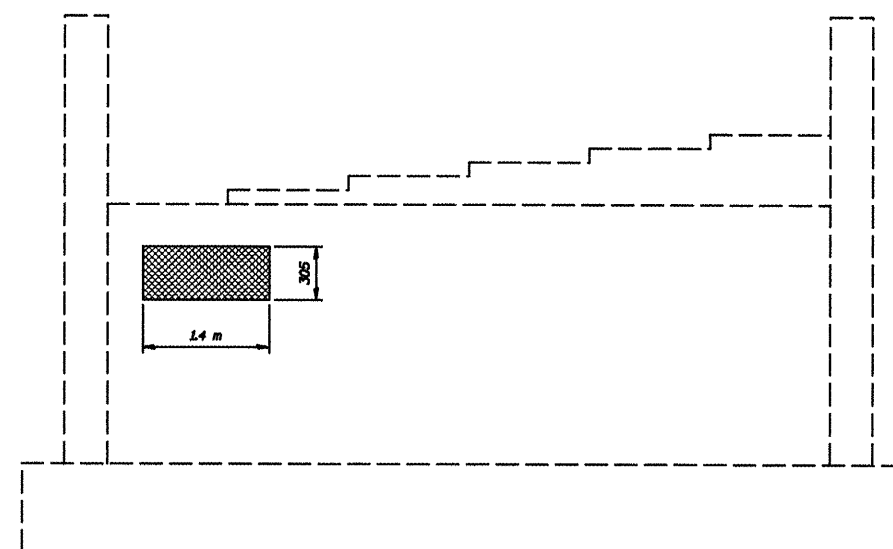
TOTAL BILL OF MATERIAL

ITEM	UNIT	QTY.
Stone Dumped Riprap, Class A-4	m <sup>2</sup>	30
Structural Repair of Concrete (Depth Equal To or Less Than 125 mm)	m <sup>2</sup>	1.2

All dimensions are in millimeters (mm) except as noted.



SOUTH ABUTMENT



NORTH ABUTMENT

DESIGNED	--
CHECKED	--
DRAWN	NQ
CHECKED	JKC

- Structural Repair of Concrete (Depth Equal To or Less Than 125 mm)
- Denote eroded areas requiring backfill. Use Stone Dumped Riprap, Class A-4 as backfill material.

REPAIR PLAN-SN 057-0215  
I-39 OVER F.A.I. ROUTE 55  
McLEAN COUNTY  
SN 057-0214 (RAMP A)  
SN 057-0215 (NB I-39)