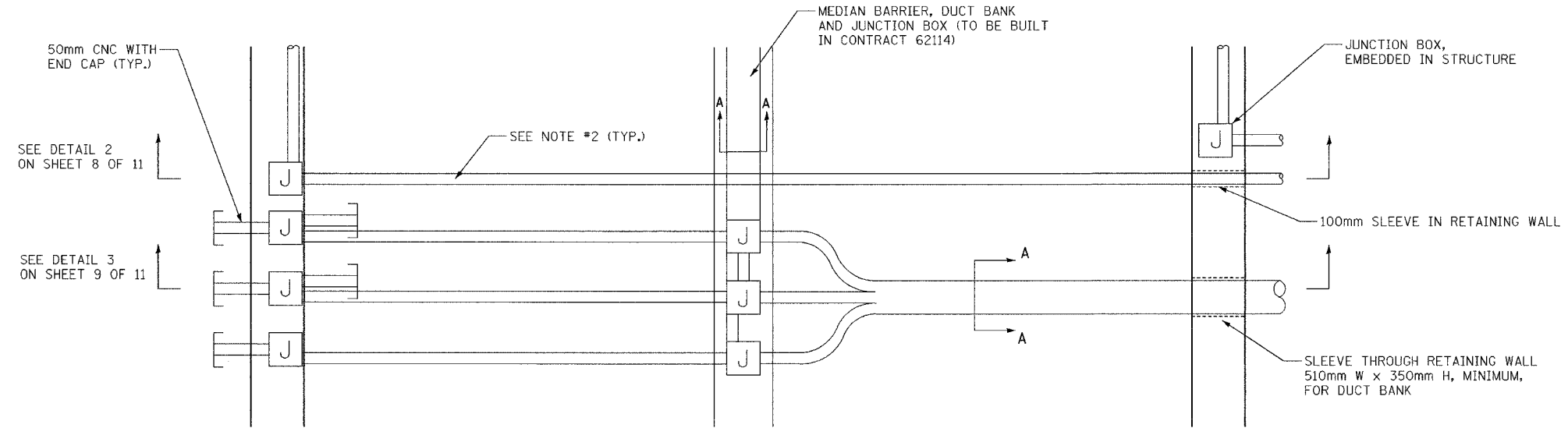
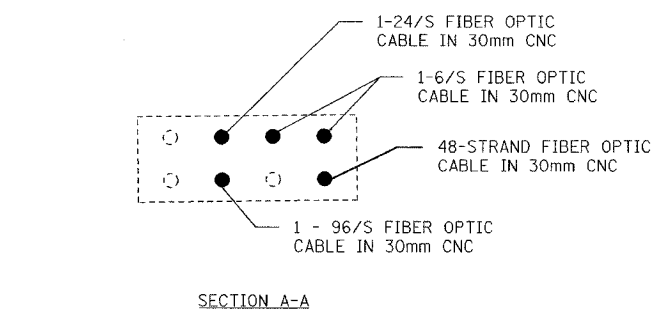


ALL DIMENSIONS IN METERS EXCEPT PAY ITEMS AND UNLESS NOTED OTHERWISE.

| | | | | |
|---------------------|------------|------------------|--------------|-----------|
| F.A.I. RTE. | SECTION | COUNTY | TOTAL SHEETS | SHEET NO. |
| 80/94 | 2626.2-R-1 | COOK | 452 | 140 |
| STA. | TO STA. | | | |
| FED. ROAD DIST. NO. | ILLINOIS | FED. AID PROJECT | | |
| CONTRACT #62113 | | | | |



DETAIL 1
PLAN VIEW
I-80, STATION 7+870
N.T.S.



NOTES:

- FOR TYPICAL ELEVATIONS, SEE SHEETS 8 AND 9.
- ALL DUCT BANKS UNDER PAVEMENT IN REINFORCED CONCRETE. (INSTALLED IN CONTRACT 62664.)
- MEDIAN BARRIER WALL, DUCT BANK IN MEDIAN BARRIER WALL FOUNDATION, AND CONDUIT STUBS EXTENDING FROM MEDIAN BARRIER WALL CONSTRUCTED BY OTHERS. CONDUITS IN DUCT BANKS UNDER PAVEMENT OF IN TRENCH CONSTRUCTED IN CONTRACT 62664. CONDUITS AND JUNCTION BOXES IN BARRIER WALLS CONSTRUCTED IN THIS CONTRACT.

SHEET 7 OF 11

| REVISIONS | | ILLINOIS DEPARTMENT OF TRANSPORTATION I-80/94/US 6 KINGERY-BORMAN EXPRESSWAY BURNHAM ROAD TO US 41 STATE LINE CONDUIT ARRANGEMENT STA. 7+870 |
|--------------|------|--|
| NAME | DATE | |
| | | |
| | | |
| | | |
| | | |
| | | |
| | | |
| | | |
| | | |
| SCALE N.T.S. | | DRAWN BY JRH/MAP |
| DATE 07/04 | | CHECKED BY DEM/CMW |

