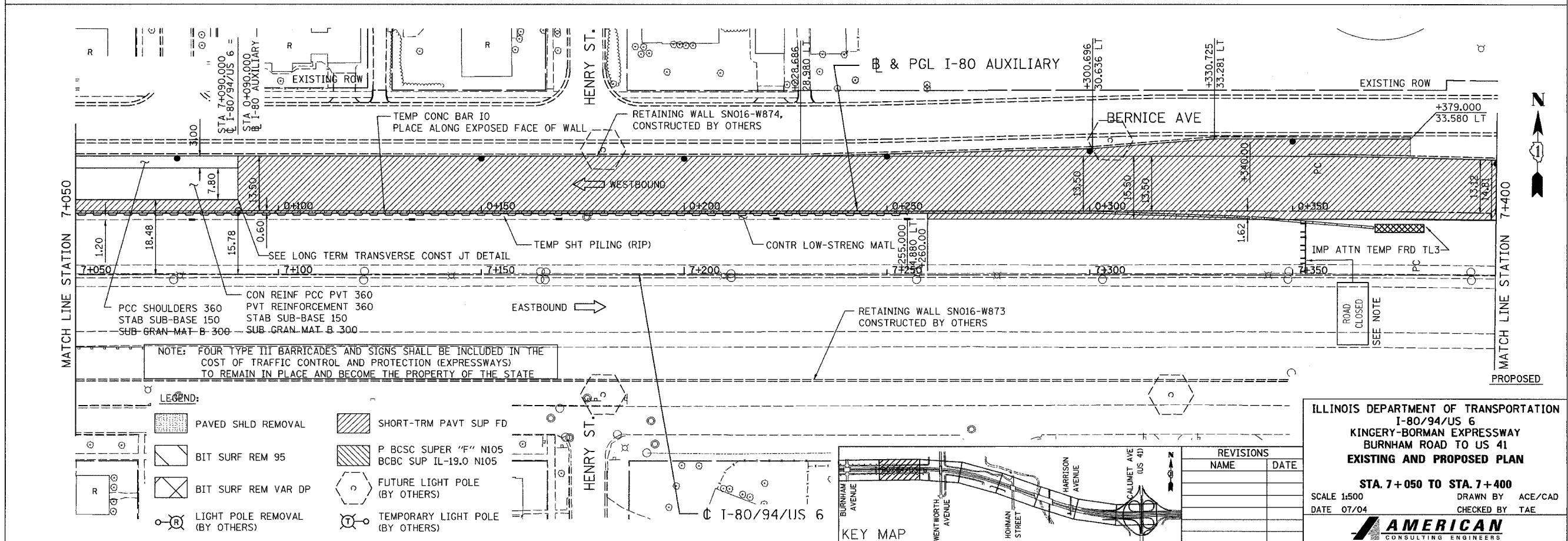
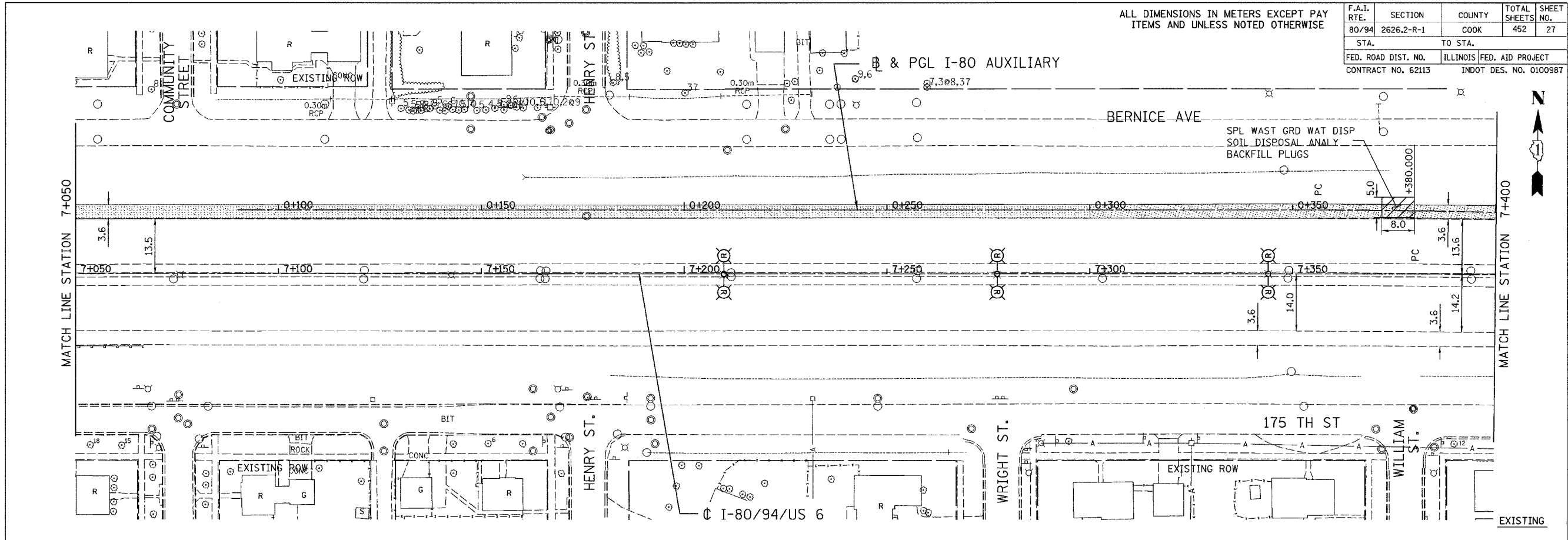


ALL DIMENSIONS IN METERS EXCEPT PAY ITEMS AND UNLESS NOTED OTHERWISE

F.A.I. RTE.	SECTION	COUNTY	TOTAL SHEETS	SHEET NO.
80/94	2626.2-R-1	COOK	452	27
STA.	TO STA.			
FED. ROAD DIST. NO.	ILLINOIS	FED. AID PROJECT		
CONTRACT NO. 62113	INDOT DES. NO. 0100987			



NOTE: FOUR TYPE III BARRICADES AND SIGNS SHALL BE INCLUDED IN THE COST OF TRAFFIC CONTROL AND PROTECTION (EXPRESSWAYS) TO REMAIN IN PLACE AND BECOME THE PROPERTY OF THE STATE

LEGEND:

	PAVED SHLD REMOVAL		SHORT-TRM PAVT SUP FD
	BIT SURF REM 95		P BCSC SUPER "F" N105
	BIT SURF REM VAR DP		FUTURE LIGHT POLE (BY OTHERS)
	LIGHT POLE REMOVAL (BY OTHERS)		TEMPORARY LIGHT POLE (BY OTHERS)
	CON REINF PCC PVT 360		
	PCC SHOULDERS 360		
	STAB SUB-BASE 150		
	SUB-GRAN-MAT B-300		
	PVT REINFORCEMENT 360		
	STAB SUB-BASE 150		
	SUB-GRAN-MAT B-300		

REVISIONS	
NAME	DATE

ILLINOIS DEPARTMENT OF TRANSPORTATION
 I-80/94/US 6
 KINGERY-BORMAN EXPRESSWAY
 BURNHAM ROAD TO US 41
EXISTING AND PROPOSED PLAN

STA. 7+050 TO STA. 7+400
 SCALE 1:500
 DATE 07/04

DRAWN BY ACE/CAD
 CHECKED BY TAE

AMERICAN
 CONSULTING ENGINEERS