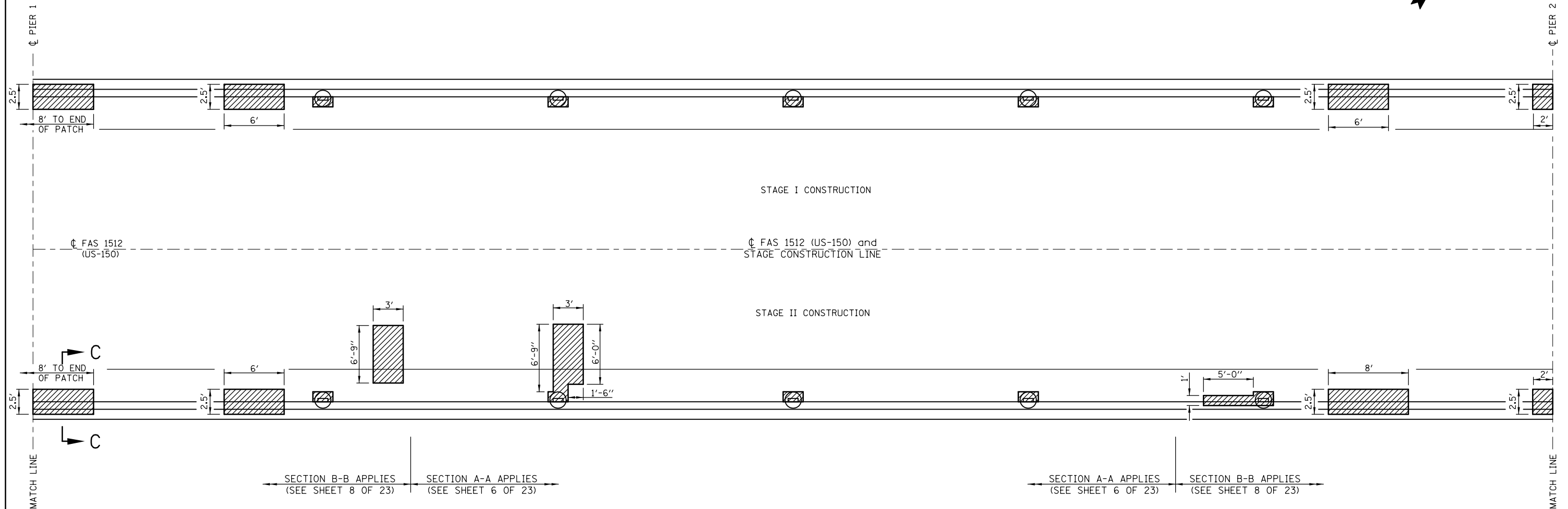
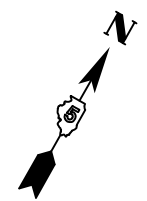


DECK SURVEY PERFORMED ON AUGUST 25, 2011. IF MORE THAN ONE WINTER FREEZE-THAW CYCLE OCCURS BETWEEN THE INITIAL INSPECTION AND THE COMMENCEMENT OF WORK, THE FINAL PLAN QUANTITIES FOR DECK REPAIRS MUST BE BASED ON A NEW INSPECTION OF THE DECK.

DECK SLAB REPAIR PLAN SPAN 2



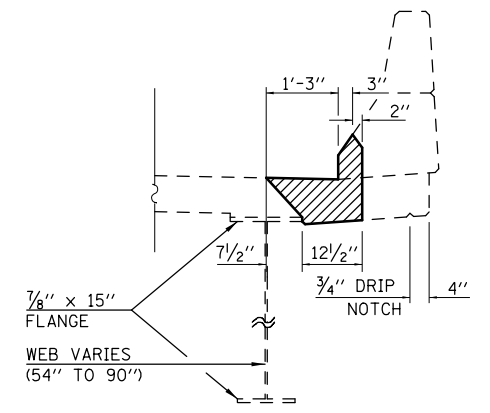
LEGEND

- ELIMINATE FLOOR DRAIN — SEE SHEET 13 OF 23 FOR DETAILS ASSOCIATED WITH PROPOSED FLOOR DRAINS
- PROPOSED FLOOR DRAIN LOCATION
- DECK SLAB REPAIR (FULL DEPTH, TYPE I & TYPE II)

NOTES

PATCH SIZES SHOWN REPRESENT CONDITIONS AT THE TIME THE PLANS WERE COMPLETED. THE ACTUAL SIZES AND LOCATIONS OF PATCHING SHALL BE DETERMINED BY THE ENGINEER. THE ENGINEER SHALL SHOW THE ACTUAL LOCATIONS OF THE DECK REPAIRS ON THIS SHEET.

THE EXISTING DECK DRAINS SHALL BE REMOVED. COST INCLUDED WITH "DECK SLAB REPAIR (FULL DEPTH, TYPE I)".



SECTION C-C

SHOWING REMOVAL LIMITS FOR DECK SLAB REPAIR (FULL-DEPTH, TYPE II) AT LOCATIONS UNDER PARAPET

BILL OF MATERIALS (THIS SHEET)

ITEM	UNIT	TOTAL
DECK SLAB REPAIR (FULL DEPTH, TY I)	SQ YD	3.0
DECK SLAB REPAIR (FULL DEPTH, TY II)	SQ YD	18.0
DECK SLAB REPAIR (PARTIAL)	SQ YD	40.0