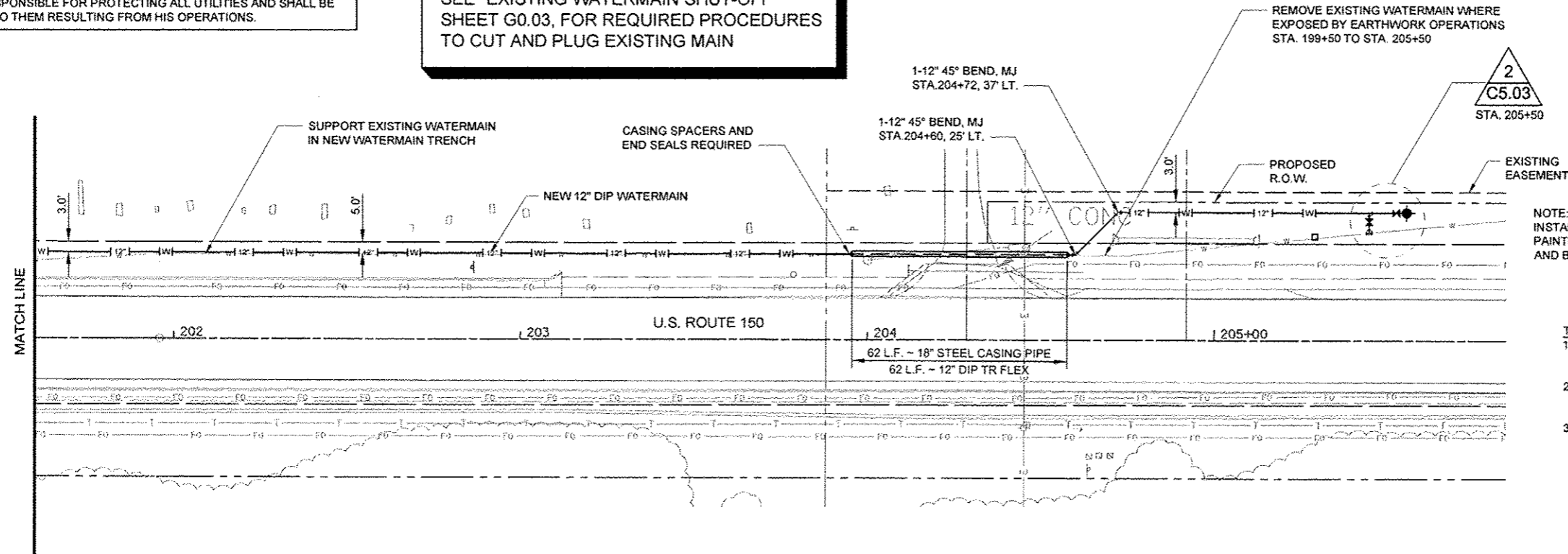


THE LOCATION OF THE UTILITIES SHOWN ARE DETERMINED FROM THE BEST AVAILABLE DATA. THEY ARE FOR INFORMATIONAL PURPOSES ONLY AND ARE NOT INTENDED TO PURPORT THE ACTUAL LOCATIONS OF SUCH UTILITIES. THE CONTRACTOR SHALL VERIFY THE LOCATIONS OF THE UTILITIES IN THE FIELD AT THE TIME OF CONSTRUCTION. THE CONTRACTOR SHALL BE RESPONSIBLE FOR PROTECTING ALL UTILITIES AND SHALL BE LIABLE FOR ANY DAMAGES TO THEM RESULTING FROM HIS OPERATIONS.

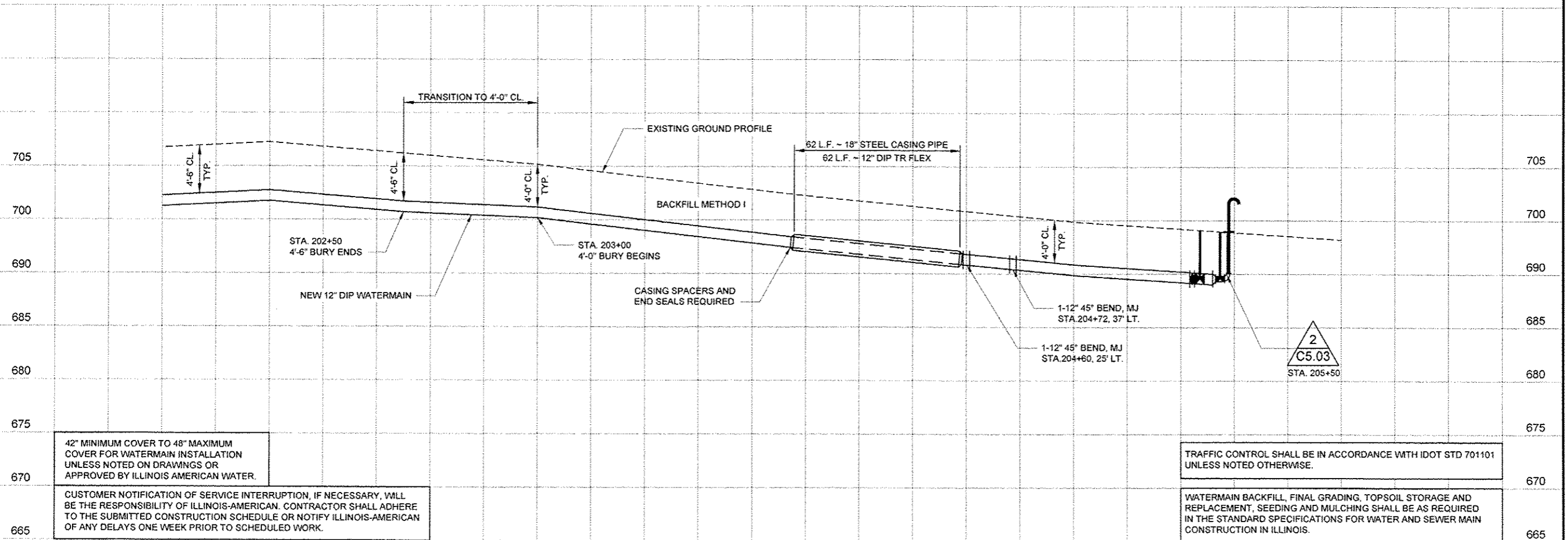
**NOTICE**  
SEE "EXISTING WATERMAIN SHUT-OFF"  
SHEET G0.03, FOR REQUIRED PROCEDURES  
TO CUT AND PLUG EXISTING MAIN

NEW WATERMAIN SHALL BE 12-INCH D.I.P.  
TYTON JOINT, PRESSURE CLASS 350  
WITH 8 MIL POLYETHYLENE PIPE WRAP



NOTE:  
INSTALL TEMPORARY 2x4  
PAINTED BLUE AT VALVE BOXES  
AND BLOW-OFFS.

- TEMPORARY BLOW-OFF
1. INSTALL BLOW-OFF DISCHARGE 3 FEET ABOVE GRADE.
  2. DIRECT BLOW-OFF FLOW TOWARD LOCAL DRAINAGE.
  3. REMOVE BLOW-OFF AT THE REQUEST OF ILAW.



42" MINIMUM COVER TO 48" MAXIMUM COVER FOR WATERMAIN INSTALLATION UNLESS NOTED ON DRAWINGS OR APPROVED BY ILLINOIS AMERICAN WATER.

CUSTOMER NOTIFICATION OF SERVICE INTERRUPTION, IF NECESSARY, WILL BE THE RESPONSIBILITY OF ILLINOIS-AMERICAN. CONTRACTOR SHALL ADHERE TO THE SUBMITTED CONSTRUCTION SCHEDULE OR NOTIFY ILLINOIS-AMERICAN OF ANY DELAYS ONE WEEK PRIOR TO SCHEDULED WORK.

TRAFFIC CONTROL SHALL BE IN ACCORDANCE WITH IDOT STD 701101 UNLESS NOTED OTHERWISE.

WATERMAIN BACKFILL, FINAL GRADING, TOPSOIL STORAGE AND REPLACEMENT, SEEDING AND MULCHING SHALL BE AS REQUIRED IN THE STANDARD SPECIFICATIONS FOR WATER AND SEWER MAIN CONSTRUCTION IN ILLINOIS.

**Foth**  
Foth Infrastructure & Environment, LLC  
1610 Broadview Drive  
Champaign, IL 61820  
Phone: 217-242-0085  
Fax: 217-242-1159  
Email: info@foth.com  
Illinois Professional Design Firm No. 184-004913

REUSE OF DOCUMENTS  
THIS DOCUMENT HAS BEEN REPRODUCED FOR INFORMATIONAL PURPOSES ONLY AND IS NOT FOR GENERAL USE. THEREFORE IT MAY NOT BE USED WITHOUT THE WRITTEN APPROVAL OF FOTH INFRASTRUCTURE AND ENVIRONMENT, LLC. UNAUTHORIZED USE IS THE SOLE RESPONSIBILITY OF THE UNAUTHORIZED USER.

**ROUTE 150 WATERMAIN RELOCATION  
BETWEEN URBANA AND ST. JOSEPH**  
ILLINOIS AMERICAN WATER COMPANY  
IDOT CONTRACT NO. 70663  
CHAMPAIGN COUNTY  
URBANA, ILLINOIS

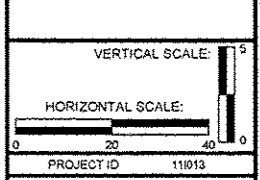
NO.	BY	DATE	DESCRIPTION

RECORD DRAWING OF COMPLETED CONSTRUCTION BY  
RECORD DRAWINGS OF COMPLETED CONSTRUCTION  
CONFORMING TO CONTRACTOR AND/OR OWNERS RECORDS.  
DATE

Date of Preparation: July 17, 2013

	BY	DATE
SURVEYED	FOTH	07-13-2013
DRAWN	WKH	07-17-2013
DESIGNED	MAJ	07-17-2013
CHECKED	MAJ	07-17-2013

SHEET NAME  
STA. 201+60 TO  
STA. 205+50



**C1.12**  
SHEET 15 OF 29