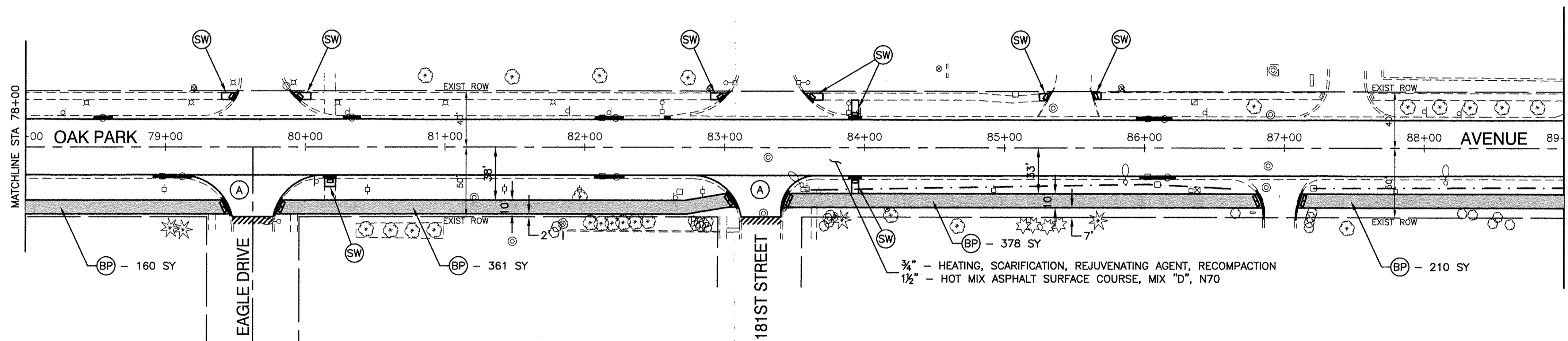


EXISTING CONDITIONS



PROPOSED IMPROVEMENTS

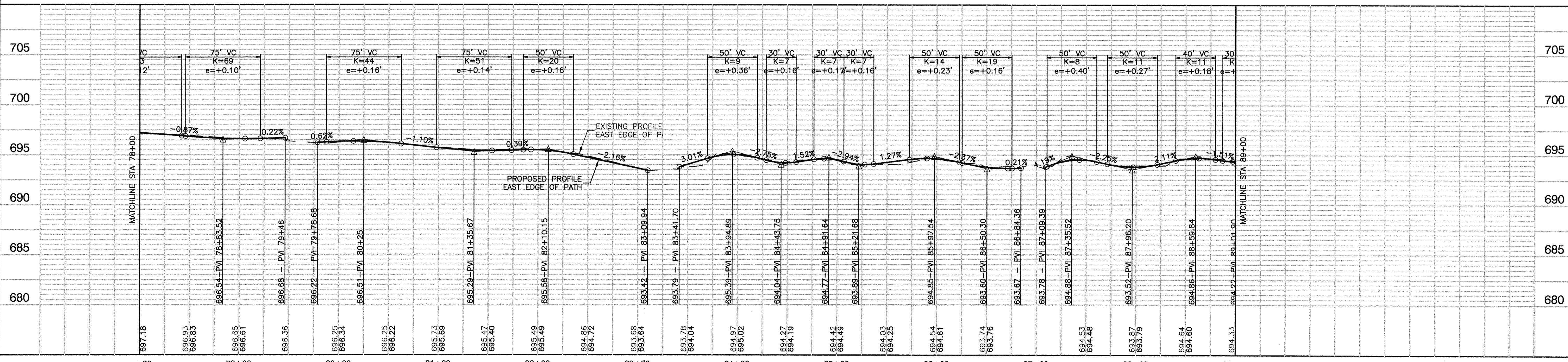
LEGEND

- CONCRETE SIDEWALK REMOVAL
- HOT-MIX ASPHALT SURFACE REMOVAL, SPECIAL
- DRIVEWAY PAVEMENT REMOVAL
- HOT-MIX ASPHALT SURFACE REMOVAL, 2"
- HOT-MIX ASPHALT SURFACE REMOVAL, BUTT JOINT
- CURB REMOVAL
- COMBINATION CONCRETE CURB AND GUTTER REPLACEMENT
- STRUCTURE TO BE ADJUSTED
- STRUCTURE TO BE RECONSTRUCTED
- EXISTING TREE REMOVAL
- HOT-MIX ASPHALT MULTI-USE PATH
-AGGREGATE BASE COURSE, TYPE B, 6"
-HOT-MIX ASPHALT SURFACE COURSE, IL-9.5, MIX "D", N50, 2"
- HOT-MIX ASPHALT SURFACE COURSE, IL-9.5, MIX "D", N70, 1 1/2"
LEVELING BINDER (MACHINE METHOD), N70, 3/4"
- P.C.C. SIDEWALK, 5"
- DETECTABLE WARNINGS



PLAN	SURVEYED	CHECKED
NOTE BOOK	PLOTTED	ALIGNMENT
	GRADES	FILE NAME
	NOTES	

PROFILE	SURVEYED	CHECKED
NOTE BOOK	PLOTTED	GRADES
	NOTES	



FILE NAME = 13308-PLPR-01 - IDOT PLR02

USER NAME =	DESIGNED - JPH	REVISED -
CHECKED - PKB	REVISED -	
PLOT SCALE =	DRAWN - RG	REVISED -
PLOT DATE = 12-02-13	CHECKED - AG	REVISED -

STATE OF ILLINOIS
DEPARTMENT OF TRANSPORTATION

OAK PARK AVENUE ROADWAY IMPROVEMENTS PLAN & PROFILE	
SCALE: H 1"=50' V 1"=5'	SHEET NO. 6 OF 35 SHEETS
STA.	TO STA.

F.A.U. RTE.	SECTION	COUNTY	TOTAL SHEETS	SHEET NO.
2774	13-00115-00-RS	COOK	35	6
CONTRACT NO. 61A01				
FED. ROAD DIST. NO. 1 ILLINOIS FED. AID PROJECT CMM-4003 (249)				