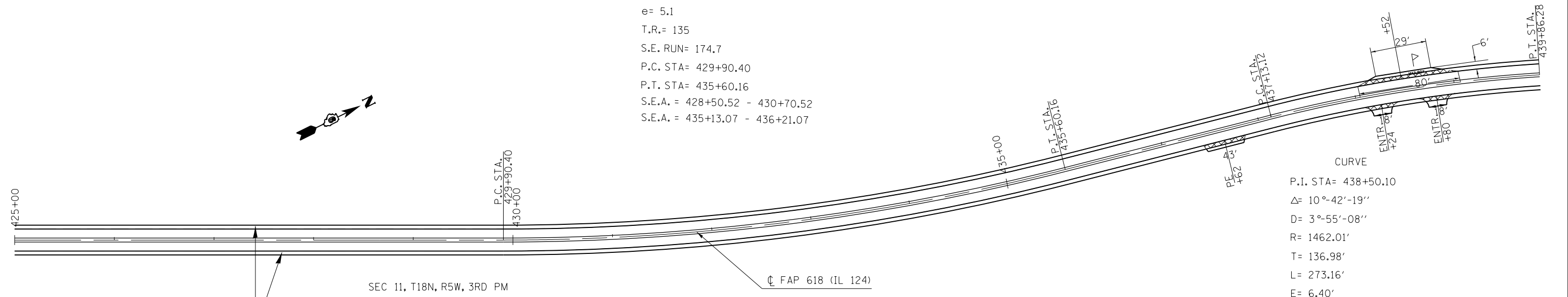
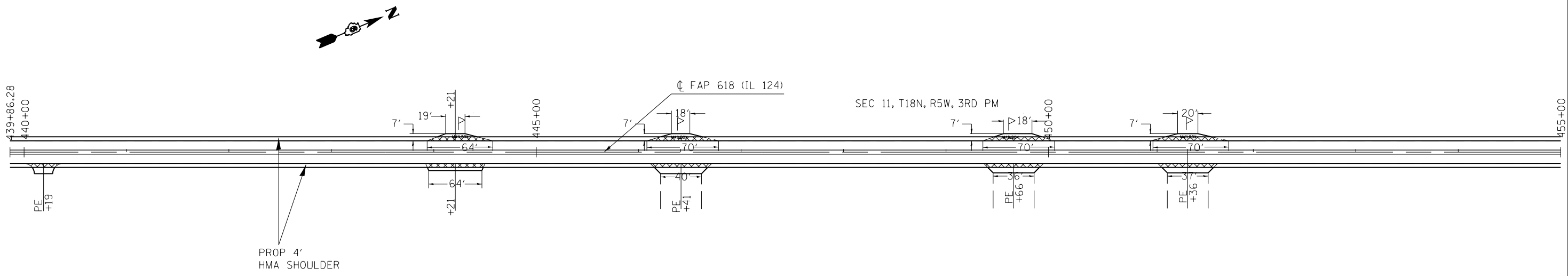


CURVE  
 P.I. STA= 432+76.77  
 $\Delta$ = 14°-18'-04"  
 D= 2°-30'-04"  
 R= 2282.70'  
 T= 286.37'  
 L= 569.76'  
 E= 17.89  
 e= 5.1  
 T.R.= 135  
 S.E. RUN= 174.7  
 P.C. STA= 429+90.40  
 P.T. STA= 435+60.16  
 S.E.A. = 428+50.52 - 430+70.52  
 S.E.A. = 435+13.07 - 436+21.07



CURVE  
 P.I. STA= 438+50.10  
 $\Delta$ = 10°-42'-19"  
 D= 3°-55'-08"  
 R= 1462.01'  
 T= 136.98'  
 L= 273.16'  
 E= 6.40'  
 e= 5.9  
 T.R.= 158  
 S.E. RUN= 198.2  
 P.C. STA= 437+13.12  
 P.T. STA= 439+86.28  
 S.E.A. 436+37.25 - 437+89.25  
 S.E.A. 436+37.25 - 437+89.25



FILE NAME =	USER NAME = laughlinc1	DESIGNED -	REVISED -
et:\pw\work\p1dot\laughlinc1\0217723\0672056-shit-plan.dgn		DRAWN -	REVISED -
	PLOT SCALE = 100.0000' / in.	CHECKED -	REVISED -
	PLOT DATE = Oct-26-2010 07:10:10AM	DATE -	REVISED -

STATE OF ILLINOIS  
 DEPARTMENT OF TRANSPORTATION

PLAN VIEW			
SCALE:	SHEET NO. OF	SHEETS	STA. TO STA.

F.A.S. RTE.	SECTION	COUNTY	TOTAL SHEETS	SHEET NO.
618	(B)RS-4, (O-15)DRS-2	SANGAMON	32	22
CONTRACT NO. 72D56				
ILLINOIS FED. AID PROJECT				