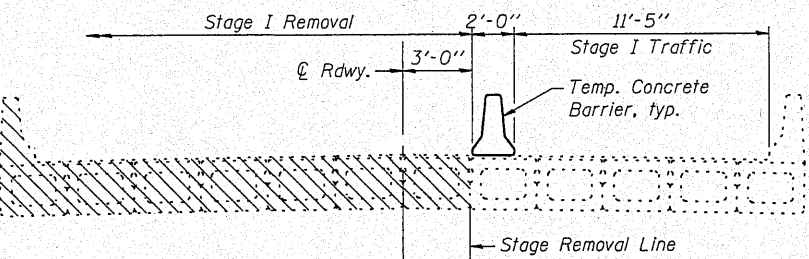
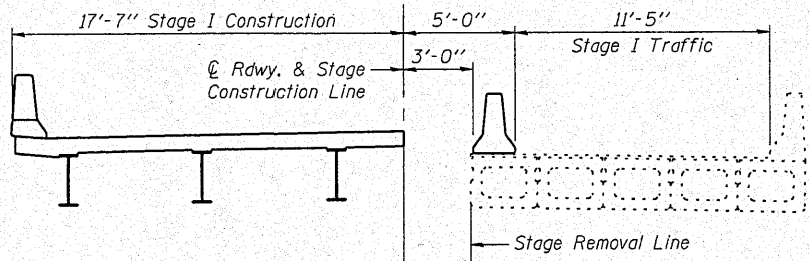


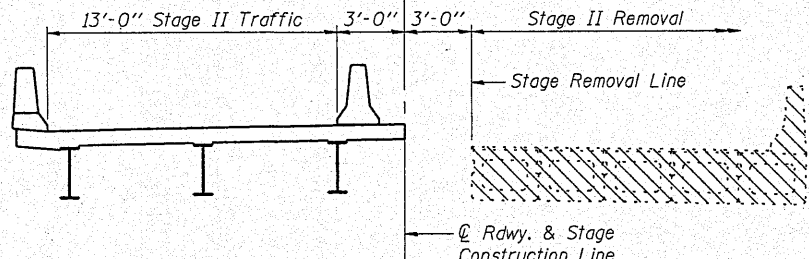
STATE OF ILLINOIS
DEPARTMENT OF TRANSPORTATION



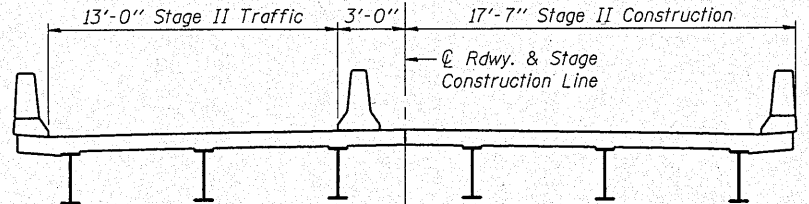
STAGE I REMOVAL
(Looking East)



STAGE I CONSTRUCTION
(Looking East)



STAGE II REMOVAL
(Looking East)



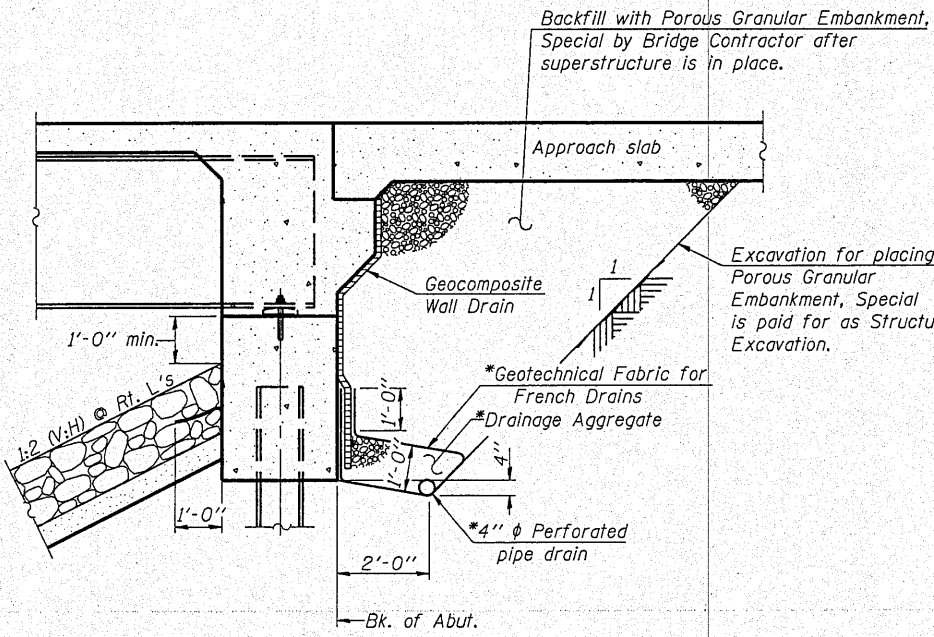
STAGE II CONSTRUCTION
(Looking East)

Staging Notes:
Hatched areas indicate Removal of Existing Structures.
For quantity and location of Temporary Concrete Barrier, see Roadway Plans.
Existing substructure units shall be sawcut 2'-6" from the centerline of roadway. Care must be taken during removal to not damage the existing piles that remain to support Stage I traffic.

BILL OF MATERIAL

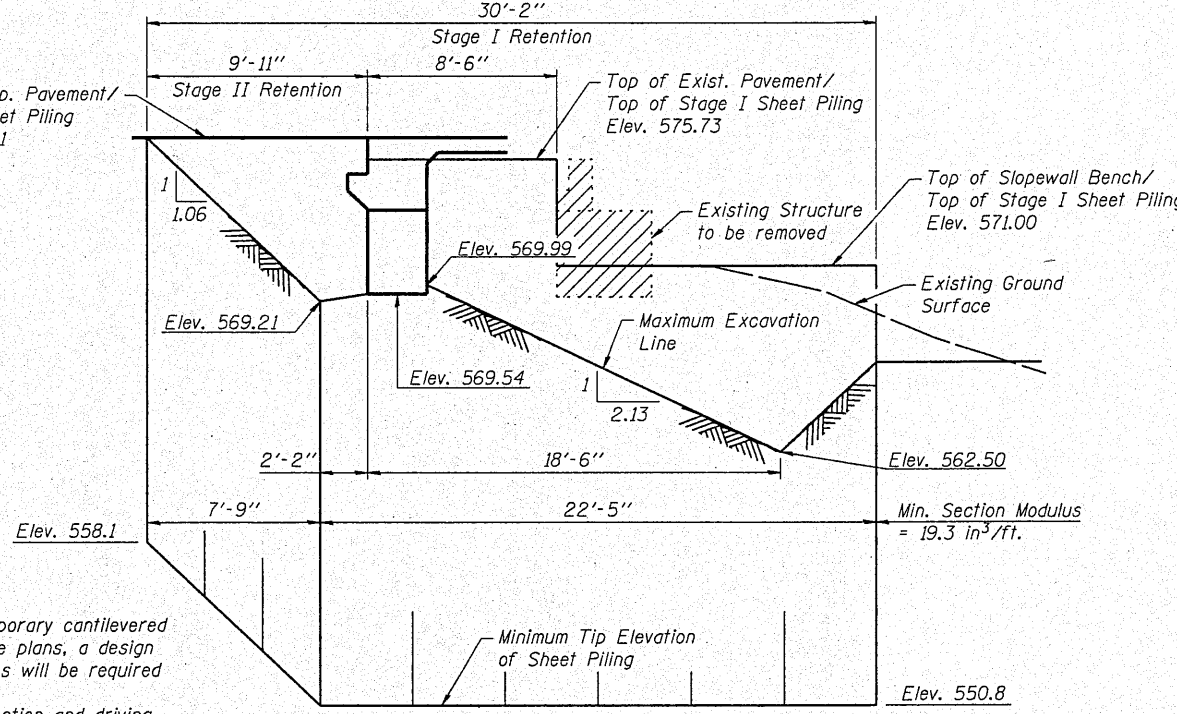
Item	Unit	Total
Temporary Sheet Piling	Sq. Ft.	928

Note:
If the Contractor chooses to alter the temporary cantilevered sheet piling design requirements shown on the plans, a design submittal including plan details and calculations will be required for review and acceptance by the Engineer.
The Contractor shall use an appropriate section and driving equipment to drive the sheet piling through a hard driving layer as indicated by the boring at the West Abutment.

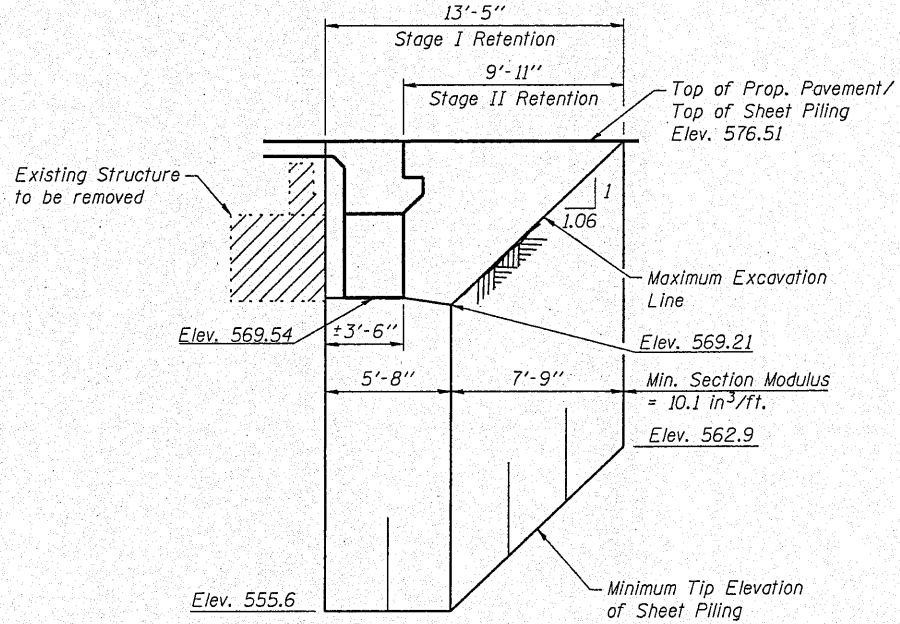


SECTION THRU INTEGRAL ABUTMENT
(Horiz. dim. @ Rt. L's)

*Included in the cost of Pipe Underdrains for Structures.
Note:
All drainage system components shall extend to 2'-0" from the end of each wingwall except an outlet pipe shall extend until intersecting with the side slopes. The pipes shall drain into concrete headwalls. (See Article 601.05 of the Standard Specifications and Highway Standard 601101).



TEMPORARY SHEET PILING
(West Abutment)



TEMPORARY SHEET PILING
(East Abutment)

STAGE CONSTRUCTION DETAILS
STRUCTURE NO. 036-0070

SHEET NO. 2	F.A.P. RTE.	SECTION	COUNTY	TOTAL SHEETS	SHEET NO.
22 SHEETS	657	(116-C)BR-1	HENDERSON	56	19
CONTRACT NO. 68761					
FED. ROAD DIST. NO. _ ILLINOIS FED. AID PROJECT					

DESIGNED - BAS
CHECKED - KEF
DRAWN - SGM
CHECKED - BAS

